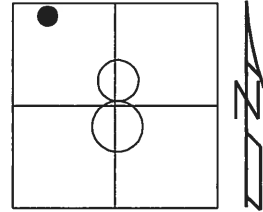


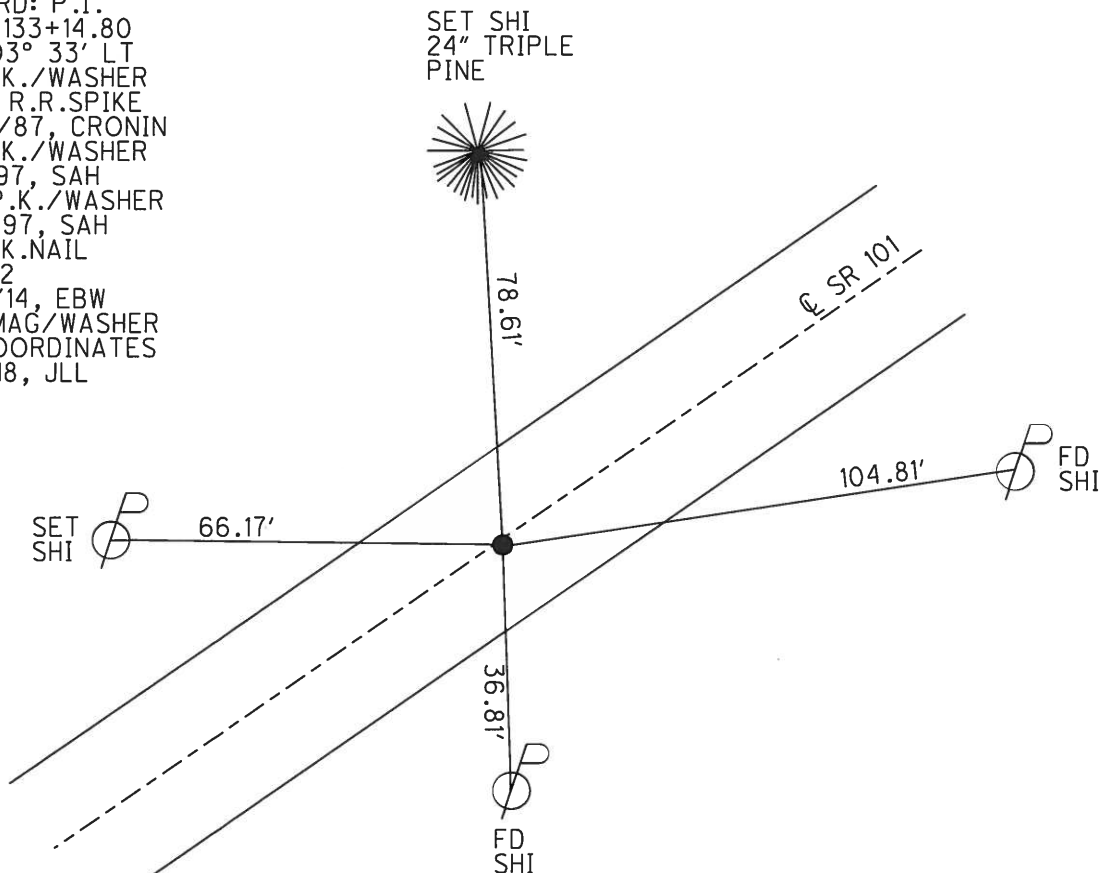
O.D.O.T. DISTRICT 2 SURVEY OFFICE (USE ONLY)

PERSONNEL _____ REFERENCE NO. 12 C SHEET 27 OF 39
 NOTES AUBLE DATE 3/6/18 ROUTE SR 101
 H.C. LEU WEATHER CLOUDY COUNTY SANDUSKY
 R.C. AUBLE TEMP. 35° TOWNSHIP YORK
 SECTION 8
 T 4 N R 17 E

TYPE MONUMENT P.K.NAIL
 ON SURFACE - ~~BELOW~~ ON _____
~~LEFT~~ - CL PAV'T - RIGHT 0.4'
9.5' TO RT EDGE PAVEMENT
 S.L.M. 338+03.8
 Grid: Northing: 605564.922 Easting: 1850024.108



RECORD: P.I.
 STA. 133+14.80
 $\Delta = 03^\circ 33' \text{ LT}$
 FD P.K./WASHER
 OVER R.R.SPIKE
 10/14/87, CRONIN
 FD P.K./WASHER
 8/4/97, SAH
 SET P.K./WASHER
 8/21/97, SAH
 FD P.K.NAIL
 REFC12
 11/10/14, EBW
 SET MAG/WASHER
 BY COORDINATES
 3/6/18, JLL



O.D.O.T. DISTRICT 2 SURVEY OFFICE

PERSONNEL _____

REFERENCE NO. _____

SHEET 14 OF 37

NOTES Huss

H.C. Van Dusen

R.C. Huss

DATE 08-04-97

WEATHER Cldy - Sprink.

TEMP. 178°F

ROUTE 101

COUNTY Sandusky

TOWNSHIP York

SECTION 8

T 4 N R 17 E

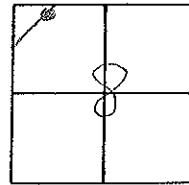
TYPE MONUMENT PK/w

ON SURFACE - ~~BELOW~~ surface

~~LEFT - C/PAVT.~~ RIGHT 0.4' R1

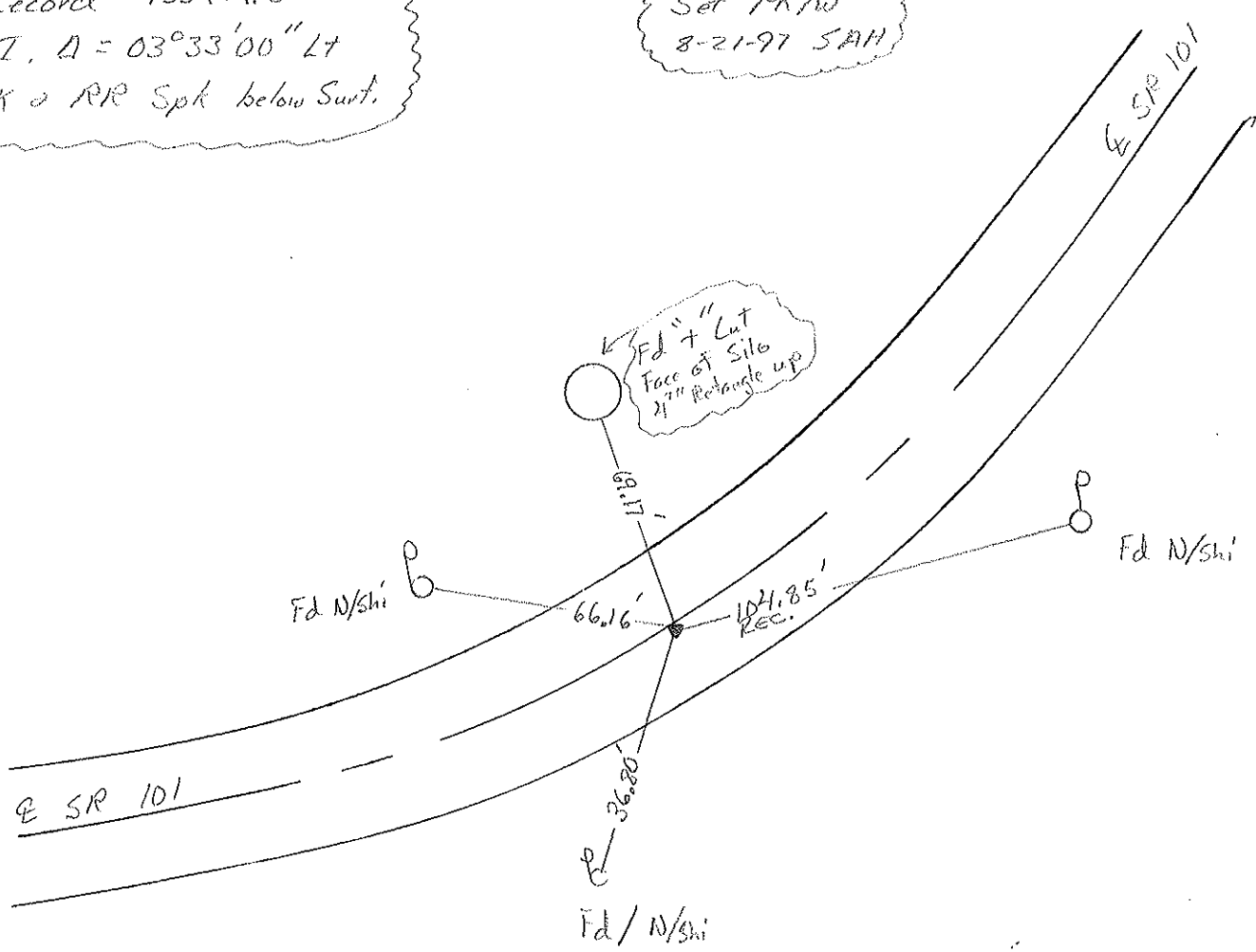
9.5 TO R1. EDGE PAVEMENT

S.L.M. 10+328 SLK



Recorel 133+14.80
 P.I. $\Delta = 03^{\circ}33'00''$ Lt
 PK & RR Spk below Surt.

Set PK/w
 8-21-97 SAM



O.D.O.T. DISTRICT 2 SURVEY OFFICE

PERSONNEL _____

REFERENCE NO. _____

SHEET 8 OF _____

NOTES Cronin

H.C. Ripple

R.C. Geyman

DATE 10/14/87

WEATHER sunny-windy

TEMP. 62°

ROUTE #101

COUNTY Sandusky

TOWNSHIP York

SECTION 8

T 4 N R 17 E

TYPE MONUMENT P.K. e' washer

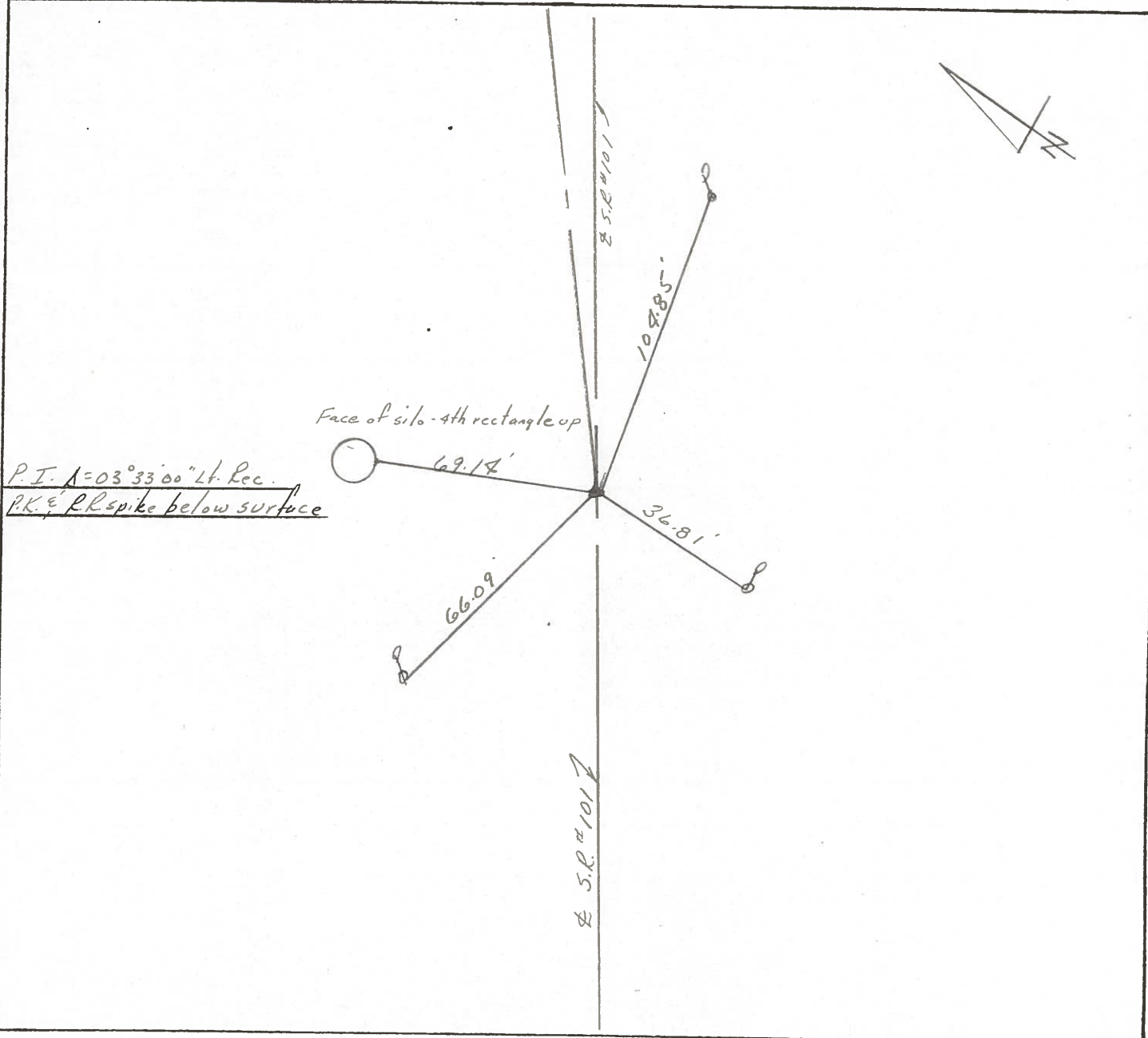
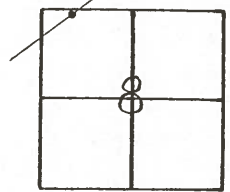
ON SURFACE - BELOW on surface

LEFT - € PAV'T. - RIGHT o.s. rt. & Pavt.

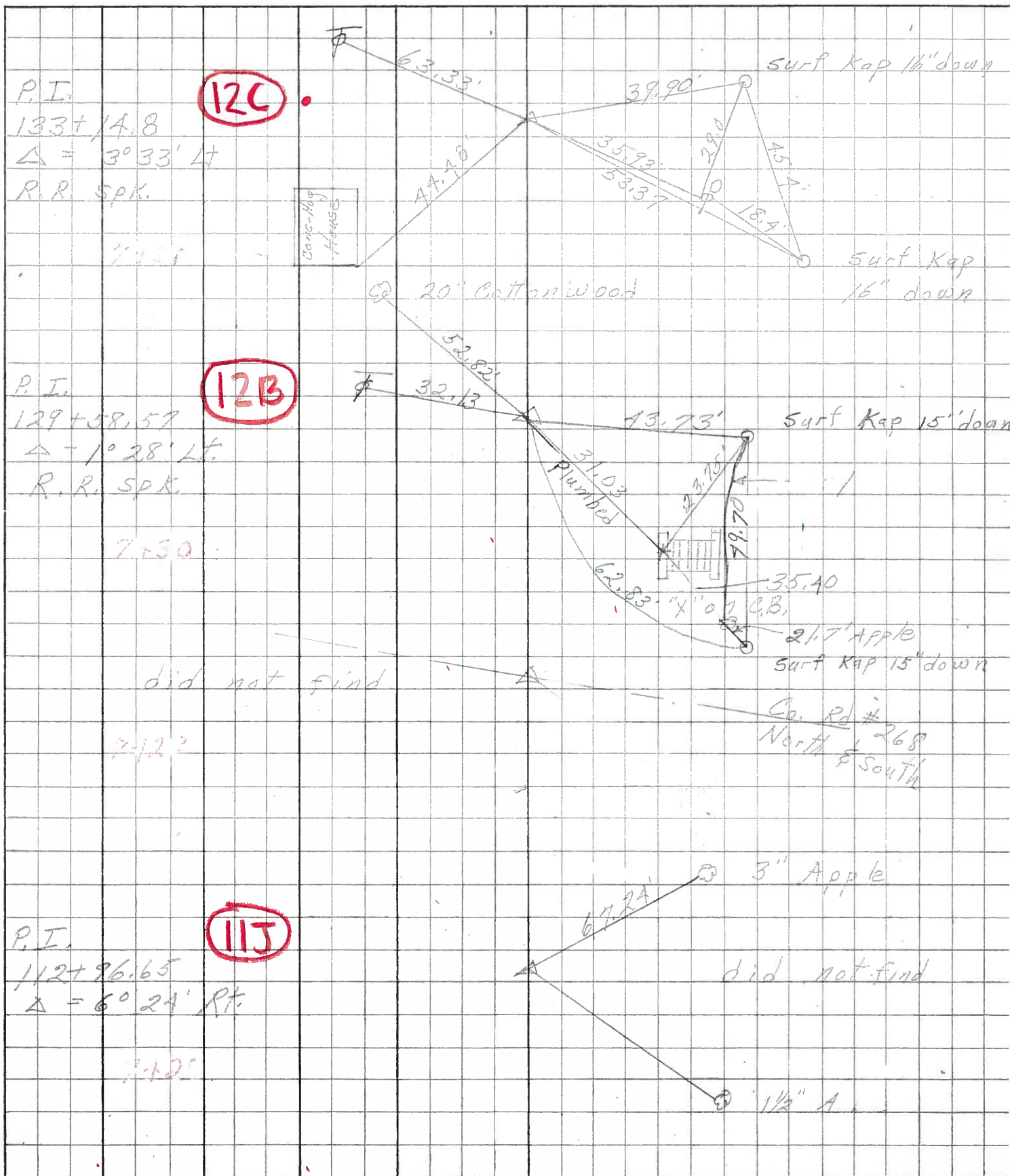
___ TO ___ EDGE PAVEMENT

S.L.M. old Sta. 133+14.80

12C



PERSONNEL	TITLE	PERSONNEL	TITLE	COUNTY	DATE	
Schneider		Potts		Sandusky	4-9-68	
Mosser				S. R.	101	
Barbour				WEATHER	Windy	
Redding				SEC.	N.E. of Clyde	
DESCRIPTION	Ties for Control Points				TEMP.	60°
	LEFT	CENTER LINE	RIGHT	JOB NO.		



PERSONNEL TITLE PERSONNEL TITLE
 Krabill _____
 Kowaleski _____
 Geyman _____
 Bruggeman _____

COUNTY Sandusky DATE Feb. 5, 1964
 S. R. # 101 WEATHER _____
 SEC. _____ TEMP. _____

DESCRIPTION U.S. #20 North to Erie Co. Line JOB NO. _____

