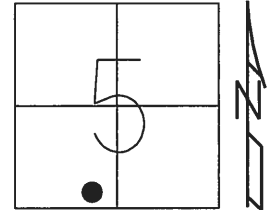


O.D.O.T. DISTRICT 2 SURVEY OFFICE (USE ONLY)

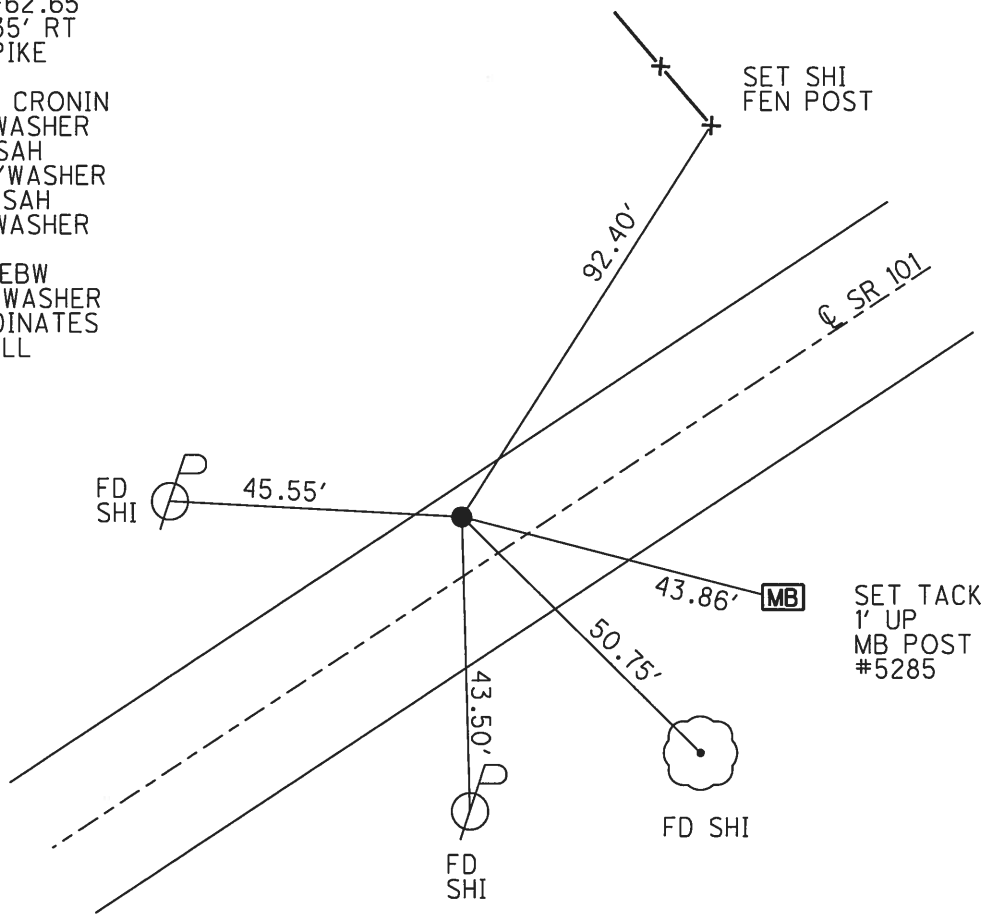
PERSONNEL	REFERENCE NO.	13	SHEET	28	OF	39
NOTES	AUBLE	DATE	3/6/18	ROUTE	SR 101	
H.C.	LEU	WEATHER	CLOUDY	COUNTY	SANDUSKY	
R.C.	AUBLE	TEMP.	36°	TOWNSHIP	YORK	
				SECTION	5	
				T	4	N
				R	17	E

TYPE MONUMENT P.K./WASHER
~~ON SURFACE~~ - BELOW 5"
 LEFT - ℄ PAV'T - ~~RIGHT~~ 7.7'
2.9' TO LT EDGE PAVEMENT
 S.L.M. 348+51.41

Grid: Northing: 606153.968 Easting: 1850890.434



RECORD: P.I.
 STA. 143+62.65
 $\Delta = 05^\circ 35' RT$
 FD R.R.SPIKE
 BELOW
 10/14/87, CRONIN
 FD P.K./WASHER
 8/4/97, SAH
 SET P.K./WASHER
 8/21/97, SAH
 FD P.K./WASHER
 REF13
 11/10/14, EBW
 SET MAG/WASHER
 BY COORDINATES
 3/6/18, JLL



O.D.O.T. DISTRICT 2 SURVEY OFFICE

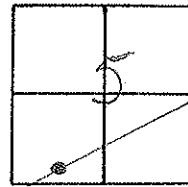
PERSONNEL _____ REFERENCE NO. _____ SHEET 15 OF 37

NOTES Huss
 H.C. VanDusen
 R.C. Moser

DATE 8-4-77
 WEATHER Cldy - Sprinkle
 TEMP. +78°F

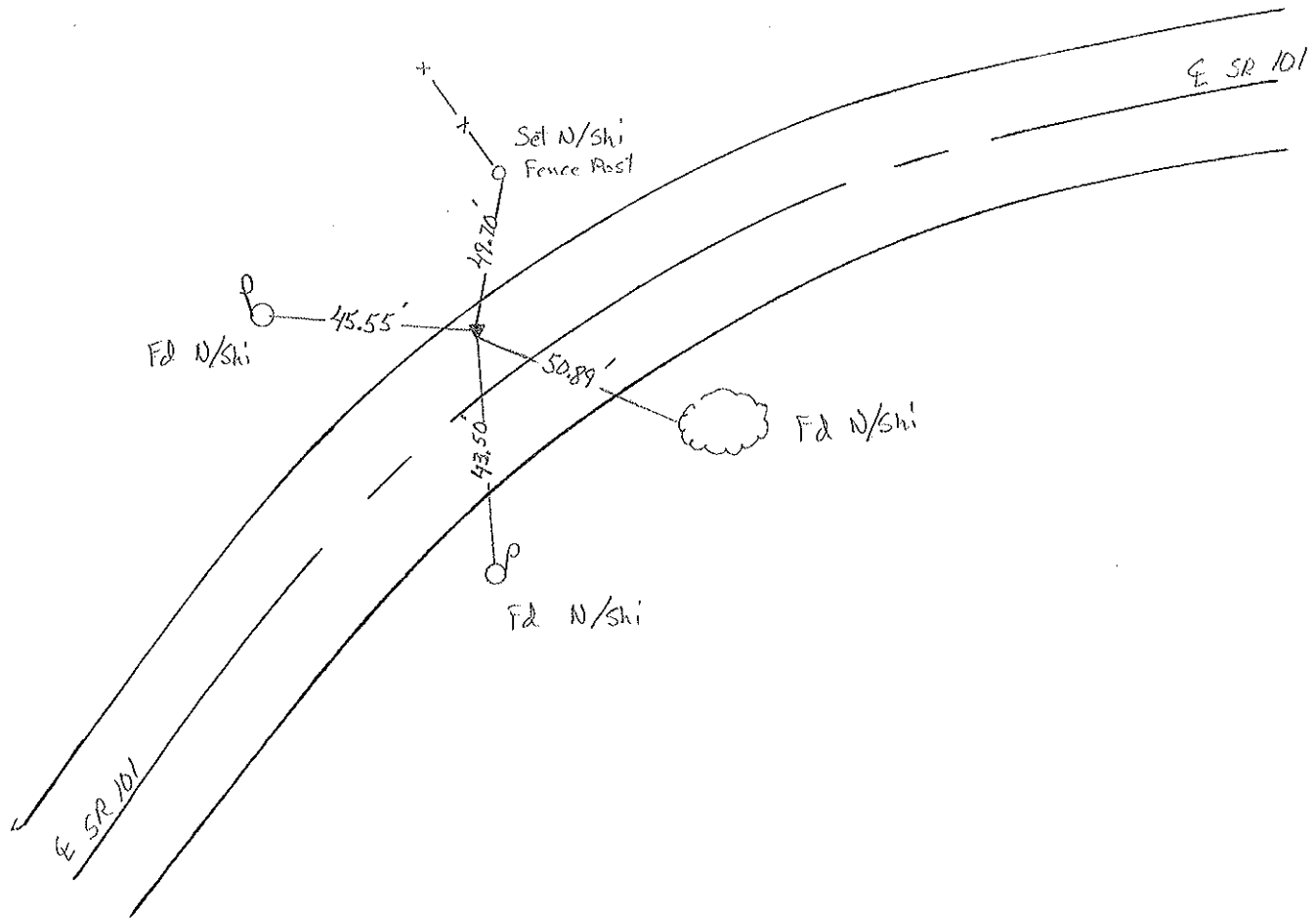
ROUTE 101
 COUNTY Sandusky
 TOWNSHIP York
 SECTION 5
 T. 6 N. R. 17 E.

TYPE MONUMENT PK/W
 ON SURFACE - BELOW Below 0.1
~~LEFT - PAV'T - RIGHT~~ 7.5 Lt.
2.9 TO Lt EDGE PAVEMENT
 S.L.M. 10+649 SLK



Record 143+62.65
 PI A = 05°-35'-00" RT.
 RR Spt. below Surf.

Set PK/W
 8-21-77 SAH



O.D.O.T. DISTRICT 2 SURVEY OFFICE

PERSONNEL _____

REFERENCE NO. _____

SHEET 9 OF _____

NOTES Aronin

H.C. Ripple

R.C. Geyman

DATE 10/14/87

WEATHER sunny

TEMP. 62°

ROUTE # 101

COUNTY Sandusky

TOWNSHIP York

SECTION 5

T 6 R 17 E

TYPE MONUMENT P.K.

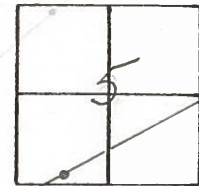
ON SURFACE - BELOW below surface

LEFT - & PAV'T. - RIGHT & Pavt.

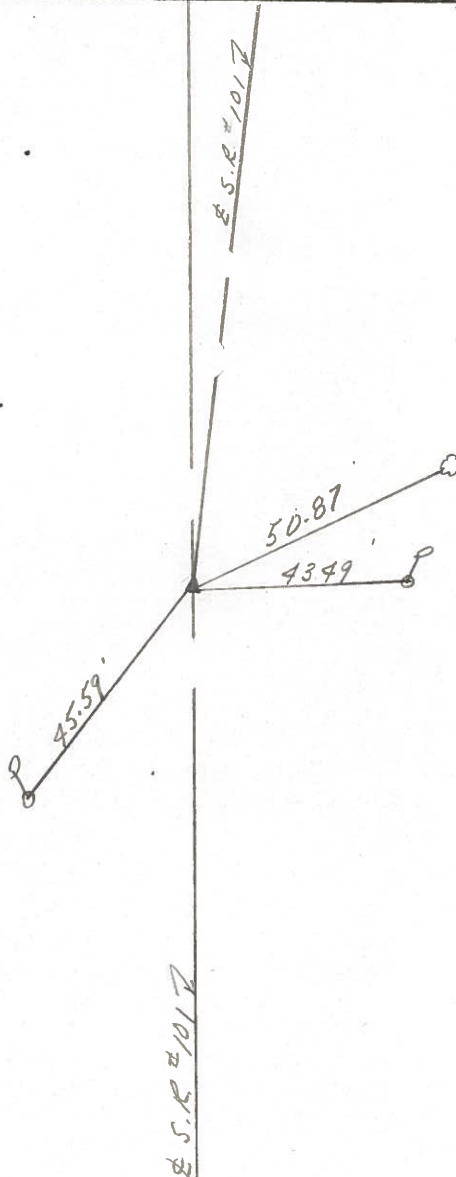
TO _____ EDGE PAVEMENT

S.L.M. old Sta 143 + 62.65

13

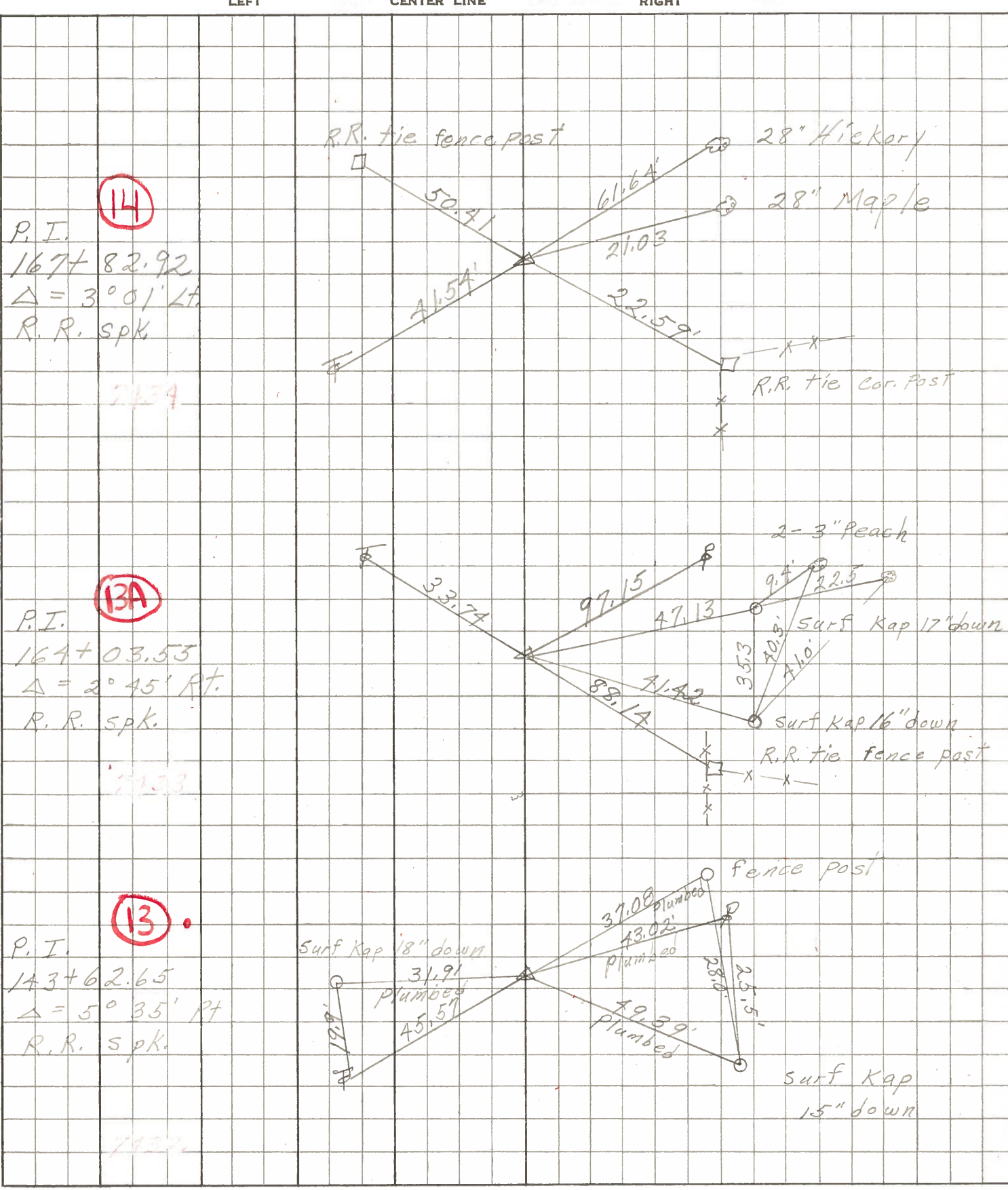


PI - Δ = 05° 35' 00" Lt. Rec.
R.R. spike below surface
Dig when needed



PERSONNEL	TITLE	PERSONNEL	TITLE	COUNTY	DATE	WEATHER	TEMP.
Schneider		Potts		Sandusky	4-10-68	Fair	58°
Mosser				S. R. 101			
Barbour				SEC. N.E. 9 e			
Redding							

DESCRIPTION: Ties for Central nt



PERSONNEL TITLE PERSONNEL TITLE COUNTY SANDUSKY DATE Feb. 5-1964
 KRABILL _____ S. R. # 101 WEATHER _____
 Kowaleski _____ SEC. _____ TEMP. _____
 Geyman _____
 Bruggeman _____

DESCRIPTION U.S. #20 North to Erie Co. Line JOB NO. _____

