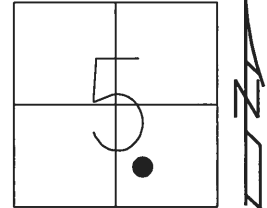


O.D.O.T. DISTRICT 2 SURVEY OFFICE (USE ONLY)

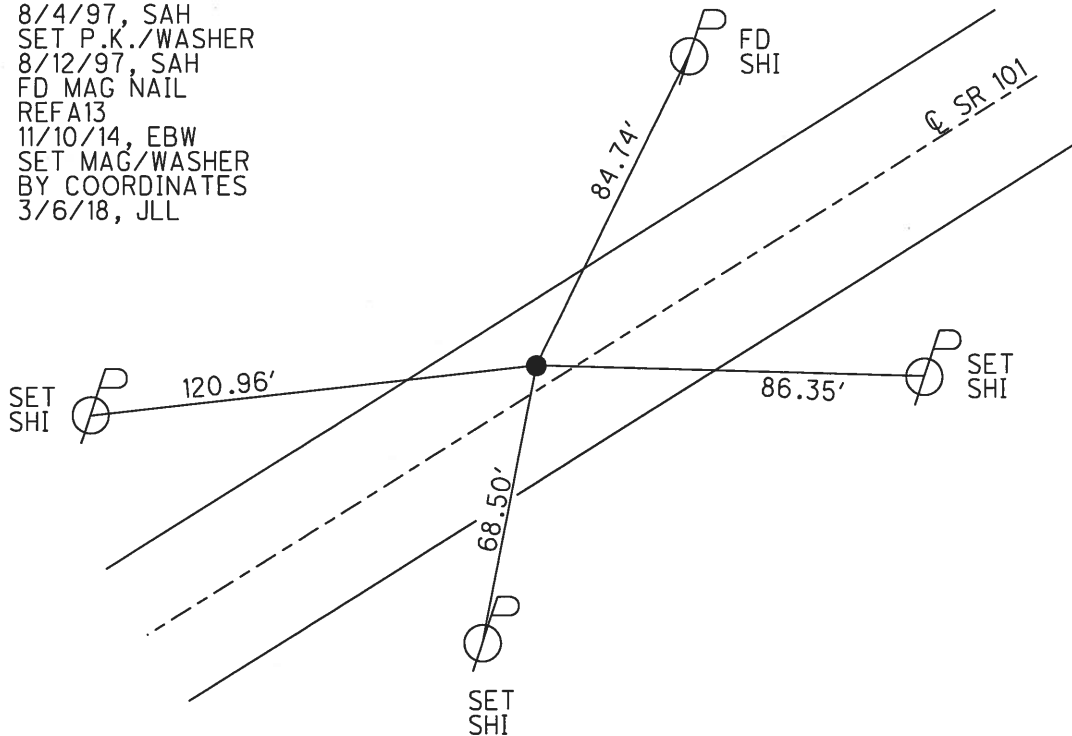
PERSONNEL _____ REFERENCE NO. 13 A SHEET 29 OF 39
 NOTES AUBLE DATE 3/6/18 ROUTE SR 101
 H.C. LEU WEATHER CLOUDY COUNTY SANDUSKY
 R.C. AUBLE TEMP. 36° TOWNSHIP YORK
 _____ SECTION 5
 _____ T 4 N R 17 E

TYPE MONUMENT MAG NAIL
 ON SURFACE - ~~BELOW~~ ON _____
~~LEFT~~ - ☉ PAV'T - RIGHT 2.5'
7.5' TO LT EDGE PAVEMENT
 S.L.M. 368+92.09



Grid: Northing: 607131.382 Easting: 1852681.809

RECORD: P.I.
 STA. 164+03.55
 $\Delta = 02^\circ 45' RT$
 FD R.R.SPIKE
 BELOW
 10/14/87, CRONIN
 FD P.K./WASHER
 8/4/97, SAH
 SET P.K./WASHER
 8/12/97, SAH
 FD MAG NAIL
 REFA13
 11/10/14, EBW
 SET MAG/WASHER
 BY COORDINATES
 3/6/18, JLL



O.D.O.T. DISTRICT 2 SURVEY OFFICE

PERSONNEL _____

REFERENCE NO. _____

SHEET 16 OF 37

NOTES Huss

H.C. VanDusen

R.C. Moser

DATE 08-04-77

WEATHER Cloudy - Sprinkle

TEMP. +78° F

ROUTE 101

COUNTY Sandusky

TOWNSHIP York

SECTION 5

T 4 N R 17 E

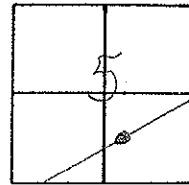
TYPE MONUMENT PK/W

~~ON SURFACE~~ - BELOW below

~~LEFT - & PAVT - RIGHT~~ 2.3' L

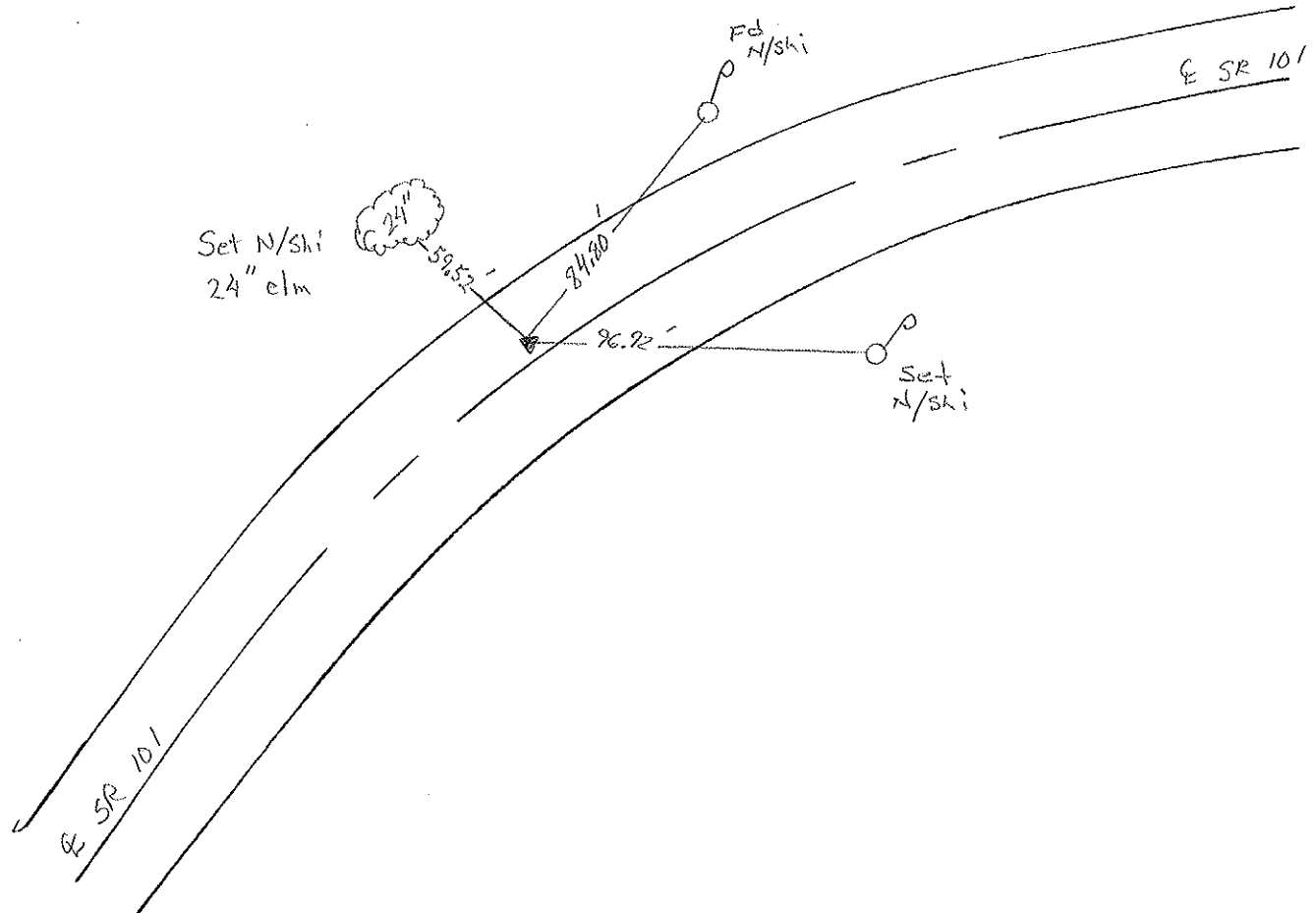
7.5' TO 1/4" EDGE PAVEMENT

S.L.M. 11+273.5 SLK



PI $\Delta = 02^{\circ} 45' 00''$ Rt
 RR Spiker below Surt.
 164+03.55
 RECORD DATA

Set PK/W
 8-12-97 SMH



O.D.O.T. DISTRICT 2 SURVEY OFFICE

PERSONNEL

REFERENCE NO. _____

SHEET 10 OF _____

NOTES Cronin

H.C. Ripple

R.C. Geyman

DATE 10/14/87

WEATHER sunny-windy

TEMP. 62°

ROUTE #101

COUNTY Sandusky

TOWNSHIP York

SECTION 5

T 4 N R 17 E

TYPE MONUMENT PK & washer

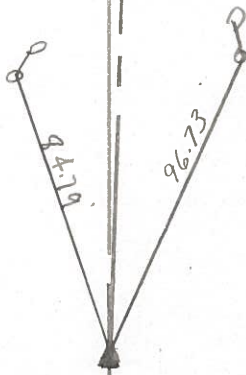
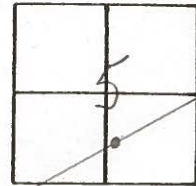
ON SURFACE - BELOW below surface

LEFT - € PAV'T. - RIGHT 2.5' Rt. & Pav't

_____ TO _____ EDGE PAVEMENT

S.L.M. _____ old Sta. 164+0355

13A



P.T. A = 02°45'00" Rt. Rec.
RR spike below surface
Dig when needed

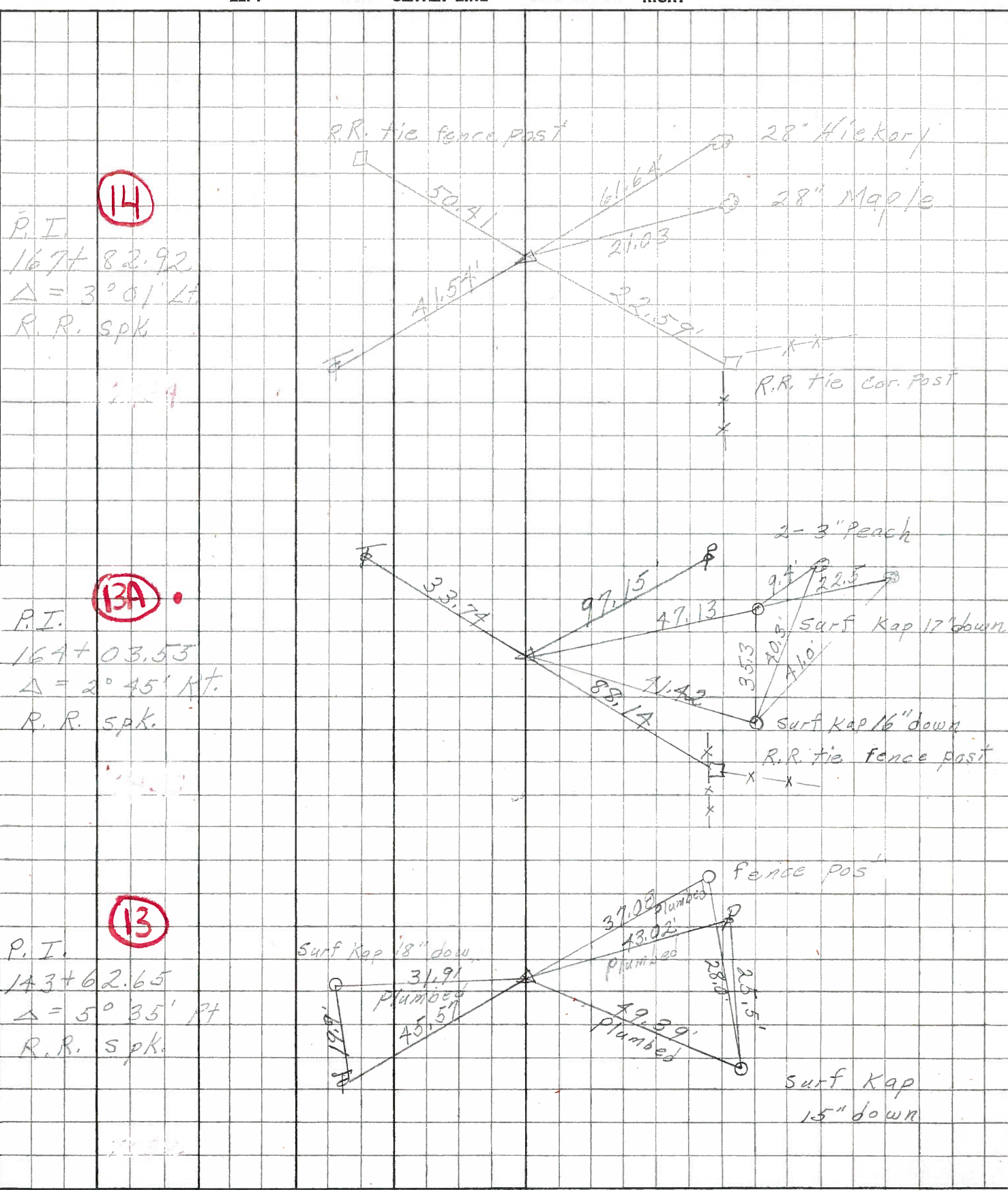
PERSONNEL TITLE PERSONNEL TITLE
 Schneider _____ Potts _____
 Mosser _____
 Barbour _____
 Redding _____

COUNTY Sandusky DATE 4-10-68

S. R. 101 WEATHER Fair

SEC. N.E. of Clyde TEMP. 58°

DESCRIPTION Ties for Control Points JOB NO. _____



14

P.I.
 167+82.92
 $\Delta = 3^{\circ} 01' Lt$
 R.R. spk.

13A

P.I.
 167+03.53
 $\Delta = 2^{\circ} 45' Rt$
 R.R. spk.

13

P.I.
 143+62.65
 $\Delta = 5^{\circ} 35' Rt$
 R.R. spk.

PERSONNEL TITLE PERSONNEL TITLE

KrABILL
Kowaleski
Geyman
Bruggeman

COUNTY Sandusky DATE Feb. 5-1964

S. R. #101 WEATHER

SEC. TEMP.

DESCRIPTION U.S. #20 North to Erie Co. Line JOB NO.

LEFT CENTER LINE RIGHT

