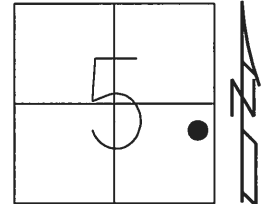


O.D.O.T. DISTRICT 2 SURVEY OFFICE (USE ONLY)

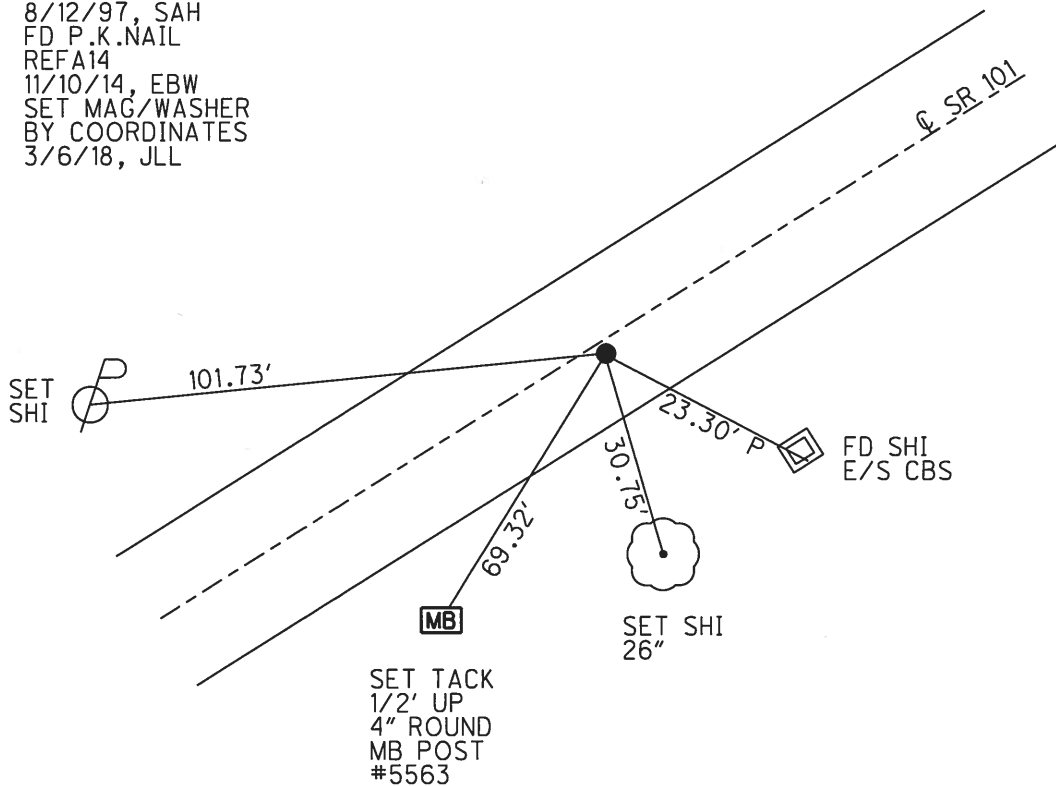
PERSONNEL _____ REFERENCE NO. 14 A SHEET 31 OF 39
 NOTES AUBLE DATE 3/6/18 ROUTE SR 101
 H.C. LEU WEATHER SUNNY COUNTY SANDUSKY
 R.C. AUBLE TEMP. 47° TOWNSHIP YORK
 _____ SECTION 5
 _____ T 4 N R 17 E

TYPE MONUMENT P.K./WASHER
 ON SURFACE - ~~BELOW~~ ON _____
~~LEFT~~ - ℄ PAV'T - RIGHT 1.2'
8.4' TO RT EDGE PAVEMENT
 S.L.M. 380+31.42



Grid: Northing: 607663.905 Easting: 1853688.644

RECORD: P.I.
 STA. 175+42.80
 $\Delta = 01^\circ 49' \text{ LT}$
 FD P.K.NAIL
 BELOW
 10/14/87, CRONIN
 FD P.K./WASHER
 8/4/97, SAH
 SET P.K./WASHER
 8/12/97, SAH
 FD P.K.NAIL
 REFA14
 11/10/14, EBW
 SET MAG/WASHER
 BY COORDINATES
 3/6/18, JLL



O.D.O.T. DISTRICT 2 SURVEY OFFICE

PERSONNEL _____

REFERENCE NO. _____

SHEET 18 OF 37

NOTES Huss

H.C. VanDusen

R.C. Moser

DATE 08-04-97

WEATHER Cldy Sprink.

TEMP. +78°F

ROUTE 101

COUNTY Sandusky

TOWNSHIP York

SECTION 5

T 4 N R 17 E

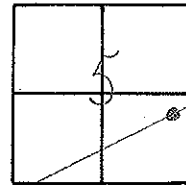
TYPE MONUMENT PK/w

ON SURFACE - ~~BELOW~~ Surface

~~LEFT~~ / ~~C. PAV'T.~~ - RIGHT 1.8' Rt.

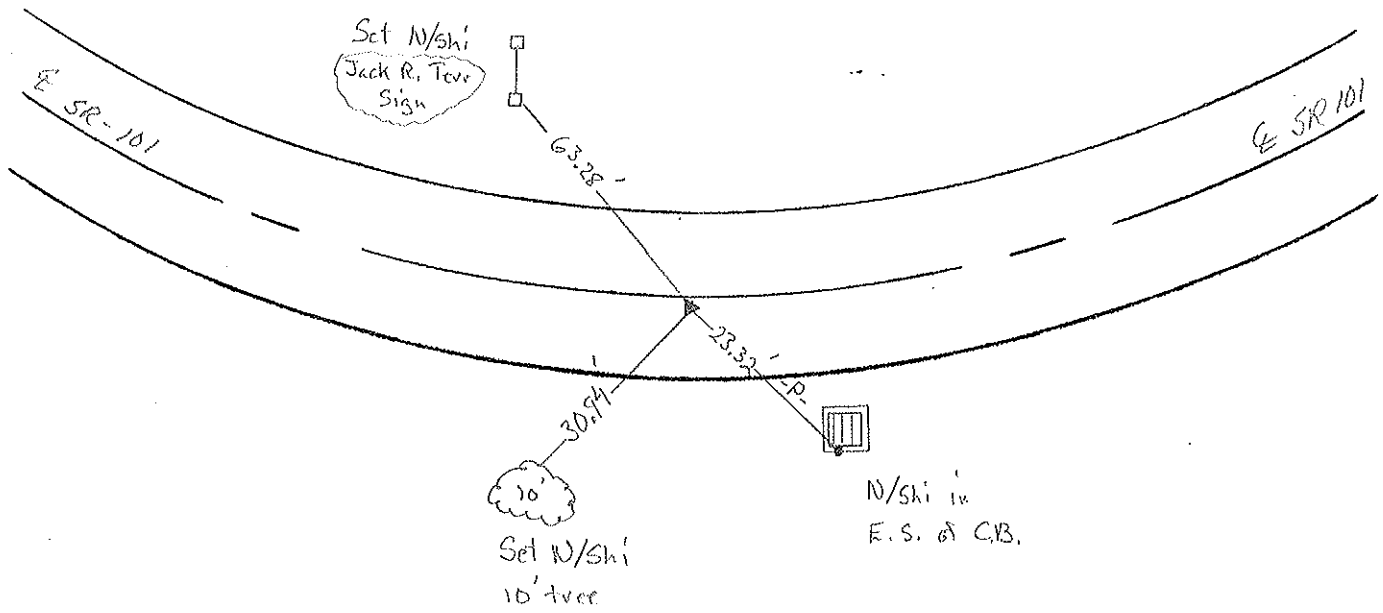
84 TO Rt. EDGE PAVEMENT

S.L.M. 117 622 SCK



Record 175+42.80
 PI Δ = 01°49'00" Lt.
 PK below start.

Set PK/w
 8-12-97 SAH



O.D.O.T. DISTRICT 2 SURVEY OFFICE

PERSONNEL _____

REFERENCE NO. _____

SHEET 12 OF _____

NOTES Cronin

H.C. Lippke

R.C. Geyman

DATE 10/14/87

WEATHER sunny - windy

TEMP. 62°

ROUTE #101

COUNTY Sandusky

TOWNSHIP York

SECTION 5

T 4 N R 17 E

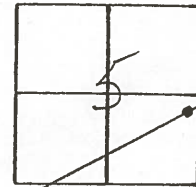
TYPE MONUMENT P.K. & washer

ON SURFACE - BELOW on surface

LEFT - CL PAV'T. - RIGHT 2 Rt. & Pav't.

TO _____ EDGE PAVEMENT

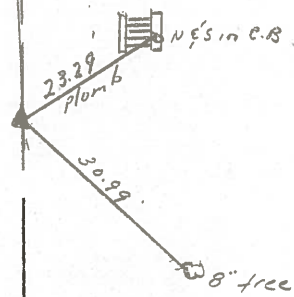
S.L.M. old Sta. 175+42.80



P.I. A = 01°49'00" Lt Rec.
P.K. below surface

Z.S.R. #101

Z.S.R. #101



PERSONNEL TITLE PERSONNEL TITLE

Schneider

Potts

COUNTY Sandusky

DATE 4-10-68

Mosser

S. R. 101

WEATHER Showers

Barbour

SEC. N.E. of

TEMP. 55°

Redding

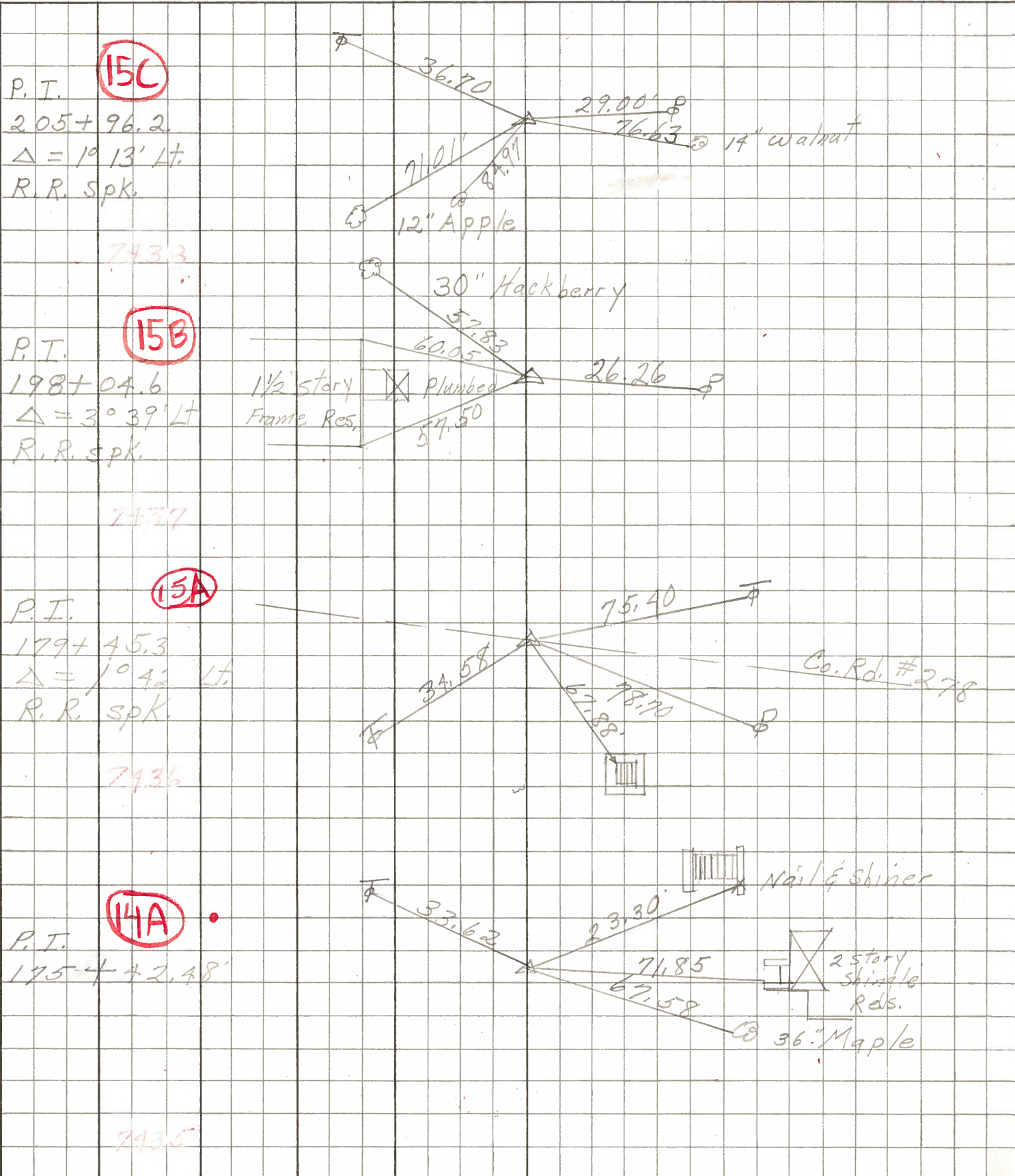
DESCRIPTION Ties for Control Points

JOB NO.

LEFT

CENTER LINE

RIGHT



PERSONNEL TITLE PERSONNEL TITLE

COUNTY Sandusky DATE Feb. 5-1964

KraBill
Kowaleski

S. R. #101 WEATHER

Geyman
Bruggeman

SEC. TEMP.

DESCRIPTION U.S. #20 North to Erie Co. Line

JOB NO.

