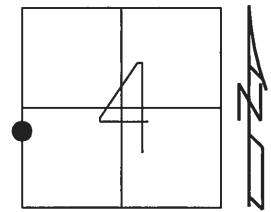


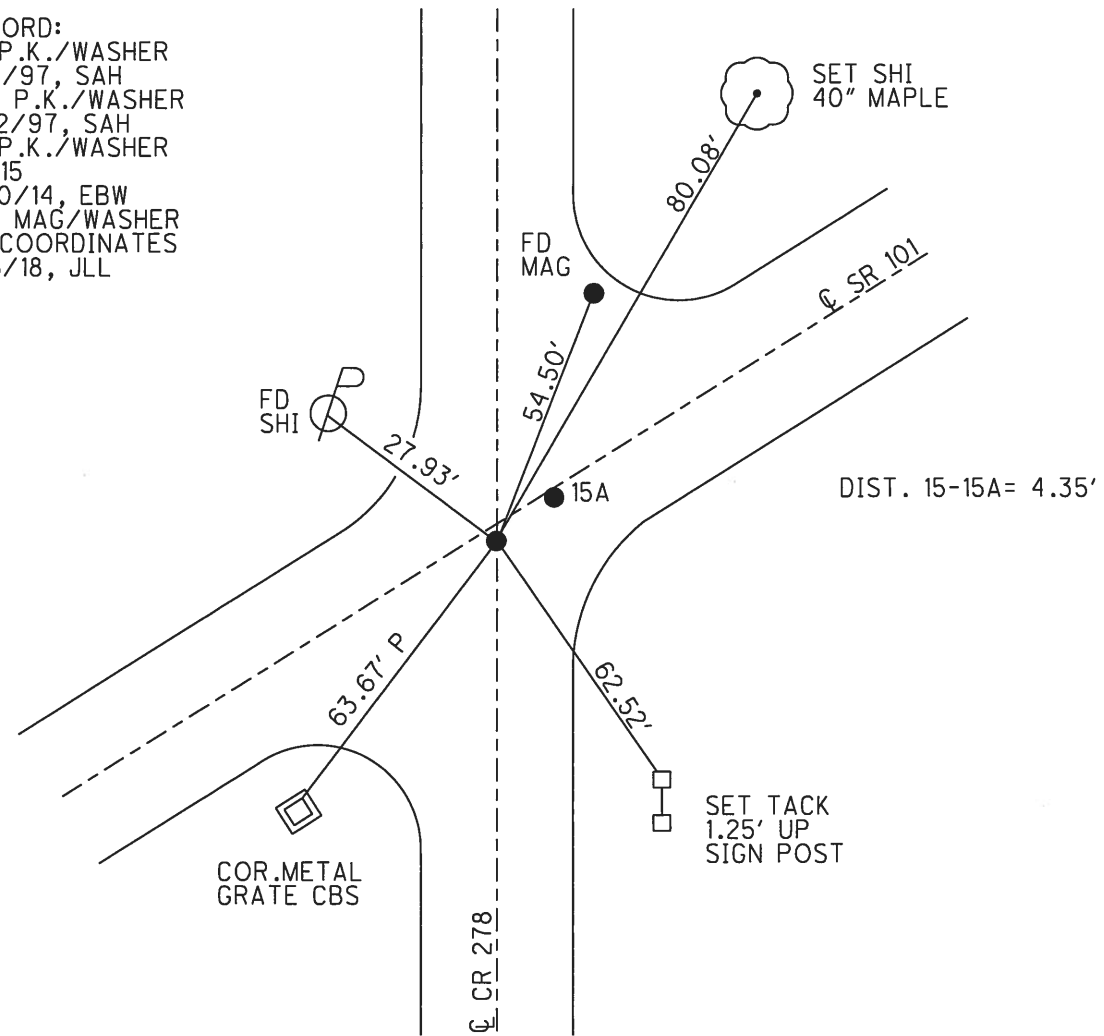
O.D.O.T. DISTRICT 2 SURVEY OFFICE (USE ONLY)

PERSONNEL	REFERENCE NO.	<u>15</u>	SHEET	<u>32</u>	OF	<u>39</u>
NOTES	AUBLE	DATE	<u>3/6/18</u>	ROUTE	<u>SR 101</u>	
H.C.	<u>LEU</u>	WEATHER	<u>SUNNY</u>	COUNTY	<u>SANDUSKY</u>	
R.C.	<u>AUBLE</u>	TEMP.	<u>47°</u>	TOWNSHIP	<u>YORK</u>	
				SECTION	<u>4</u>	
				T	<u>4</u>	R
					<u>17</u>	<u>E</u>

TYPE MONUMENT P.K./WASHER
 ON SURFACE - ~~BELOW~~ ON
~~LEFT~~ - C PAV'T - RIGHT 1.2'
 - TO - EDGE PAVEMENT
 S.L.M. 384+30.10
 Grid: Northing: 607866.972 Easting: 1854031.730



RECORD:
 FD P.K./WASHER
 8/4/97, SAH
 SET P.K./WASHER
 8/12/97, SAH
 FD P.K./WASHER
 REF15
 11/10/14, EBW
 SET MAG/WASHER
 BY COORDINATES
 3/6/18, JLL



O.D.O.T. DISTRICT 2 SURVEY OFFICE

PERSONNEL _____

REFERENCE NO. 15

SHEET 19 OF 37

NOTES Huss

H.C. Van Dusen

R.C. Moser

DATE 08-04-77

WEATHER Cldy-Sprink.

TEMP. +79°F

ROUTE 101

COUNTY Sandusky

TOWNSHIP York

SECTION 4

T 4 N R 17 E

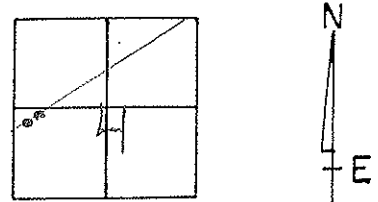
TYPE MONUMENT PK/W

ON SURFACE - ~~BELOW~~ surface

~~LEFT~~ RIGHT rt. & A = .7', B = .7'

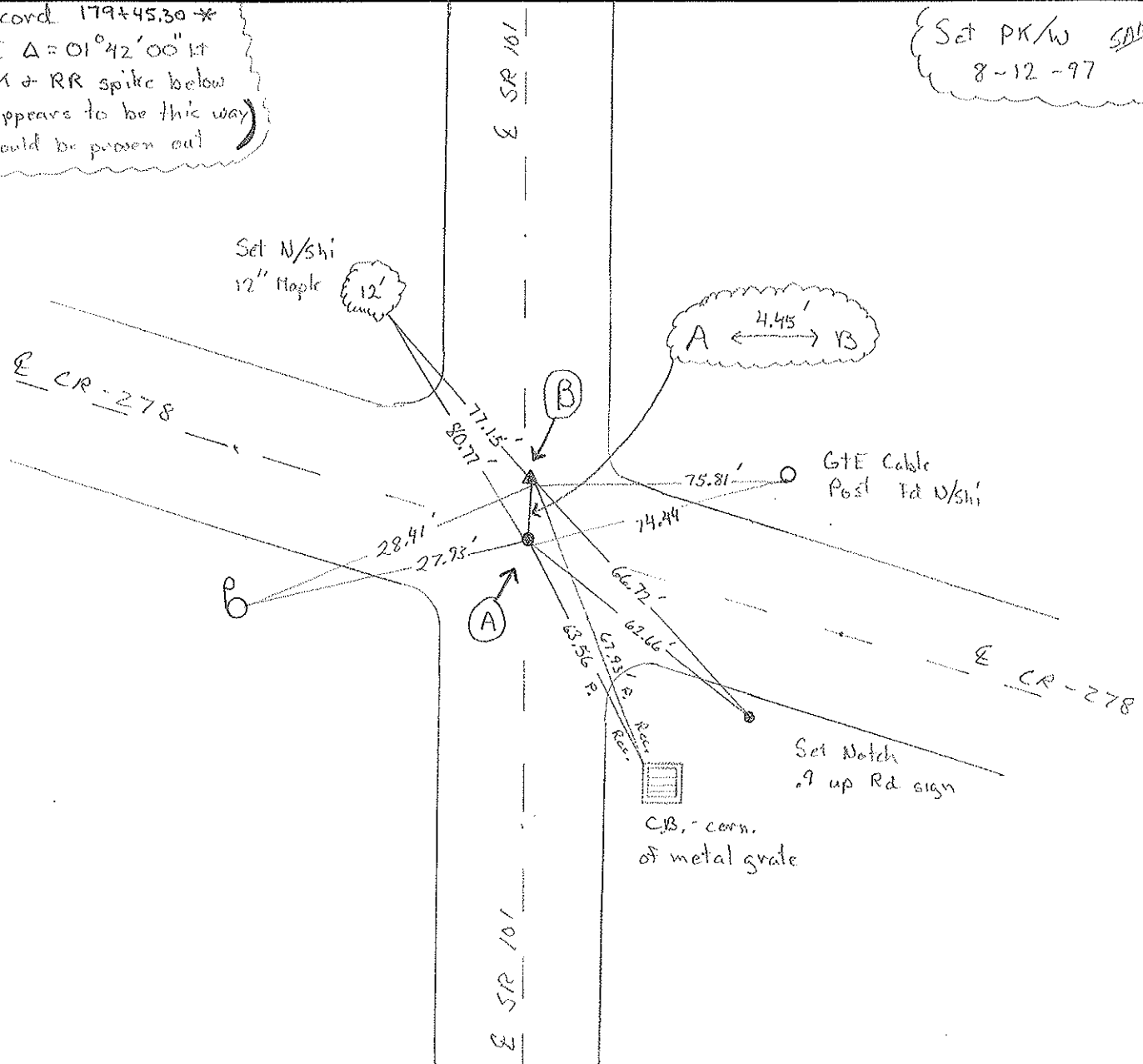
TO EDGE PAVEMENT

S.L.M. A = 11+794 SK B = 11+798.5 SK



Record 179+45.30 *
 PI Δ = 01°42'00" RT
 PK + RR spike below
 * Appears to be this way
 (Should be proven out)

Set PK/W SAH
 8-12-97



O.D.O.T. DISTRICT 2 SURVEY OFFICE

PERSONNEL

REFERENCE NO. 15 SHEET 13 OF

NOTES Cronin

H.C. Ripple

R.C. Geyman

DATE 10/14/87

WEATHER sunny - windy

TEMP. 62°

ROUTE #101

COUNTY Sandusky

TOWNSHIP York

SECTION 4

T 4 N R 17 E

TYPE MONUMENT P.K. & washer

ON SURFACE - BELOW on surface

LEFT - ☉ PAV'T. - RIGHT 1' Rt. & Pavt.

TO EDGE PAVEMENT

S.L.M. old Sta. 179+45.30 *

