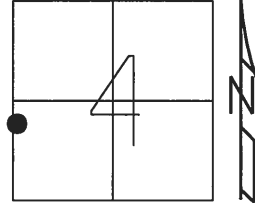


O.D.O.T. DISTRICT 2 SURVEY OFFICE (USE ONLY)

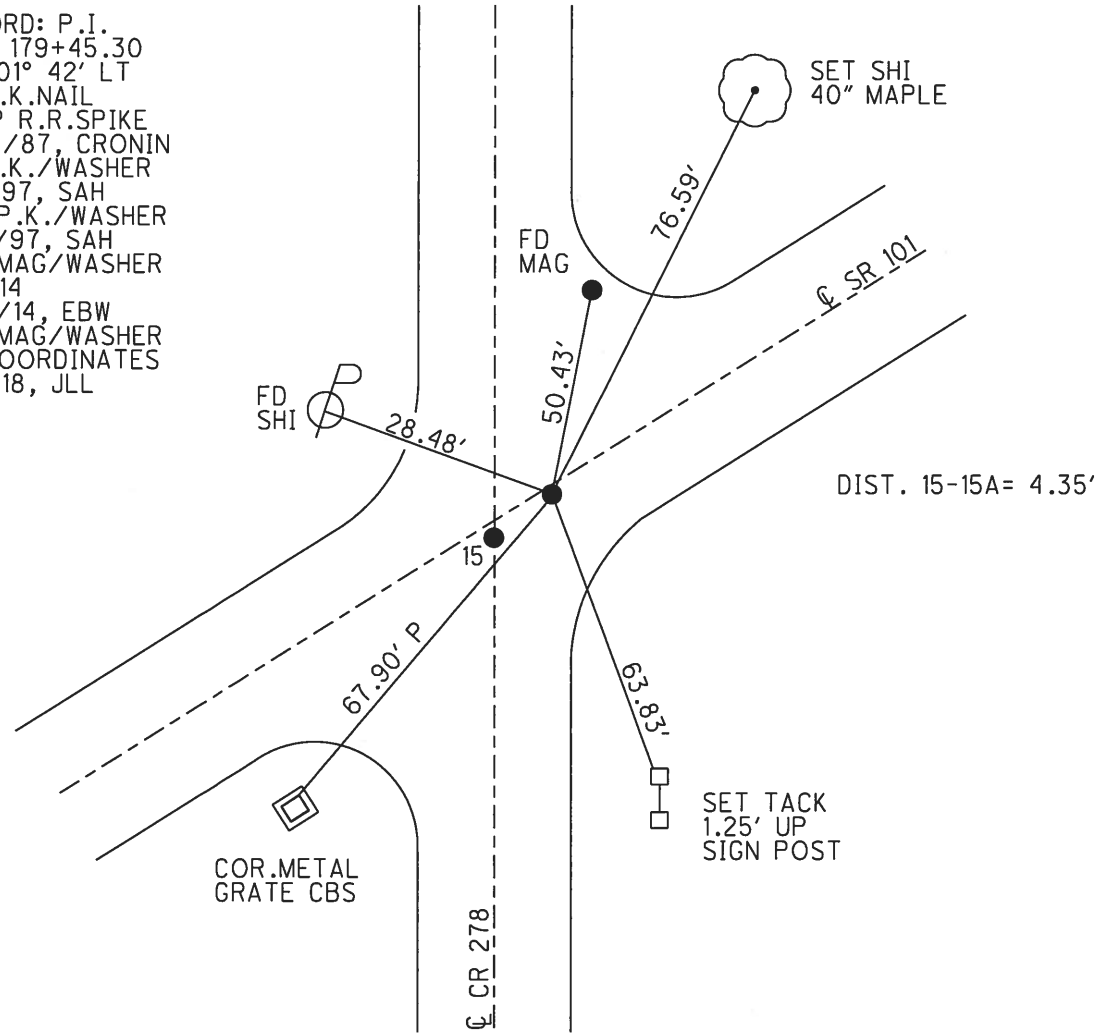
PERSONNEL	REFERENCE NO.	15 A	SHEET	33	OF	39
NOTES	AUBLE	DATE	3/6/18	ROUTE	SR 101	
H.C.	LEU	WEATHER	SUNNY	COUNTY	SANDUSKY	
R.C.	AUBLE	TEMP.	47°	TOWNSHIP	YORK	
				SECTION	4	
				T	4	N
				R	17	E

TYPE MONUMENT MAG/WASHER  
 ON SURFACE - ~~BELOW~~ ON \_\_\_\_\_  
~~LEFT~~ - ℄ PAV'T - RIGHT 0.9'  
 - TO - EDGE PAVEMENT  
 S.L.M. 384+34.44



Grid: Northing: 607869.549 Easting: 1854035.224

RECORD: P.I.  
 STA. 179+45.30  
 $\Delta = 01^\circ 42' \text{ LT}$   
 FD P.K.NAIL  
 ATOP R.R.SPIKE  
 10/14/87, CRONIN  
 FD P.K./WASHER  
 8/4/97, SAH  
 SET P.K./WASHER  
 8/12/97, SAH  
 SET MAG/WASHER  
 REFA14  
 11/10/14, EBW  
 SET MAG/WASHER  
 BY COORDINATES  
 3/6/18, JLL



# O.D.O.T. DISTRICT 2 SURVEY OFFICE

PERSONNEL

REFERENCE NO. 15

SHEET 19 OF 37

NOTES Huss

H.C. Van Dusen

R.C. Moser

DATE 08-04-77

WEATHER Cldy - Sprink.

TEMP. +79°F

ROUTE 101

COUNTY Sandusky

TOWNSHIP York

SECTION 4

T 4 N R 17 E

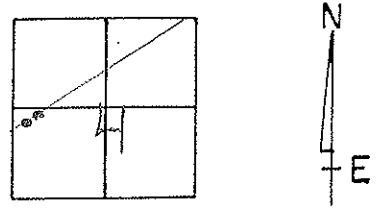
TYPE MONUMENT PK/W

ON SURFACE - ~~BELOW~~ surface

~~LEFT~~ RIGHT rt. & A = .7', B = .7'

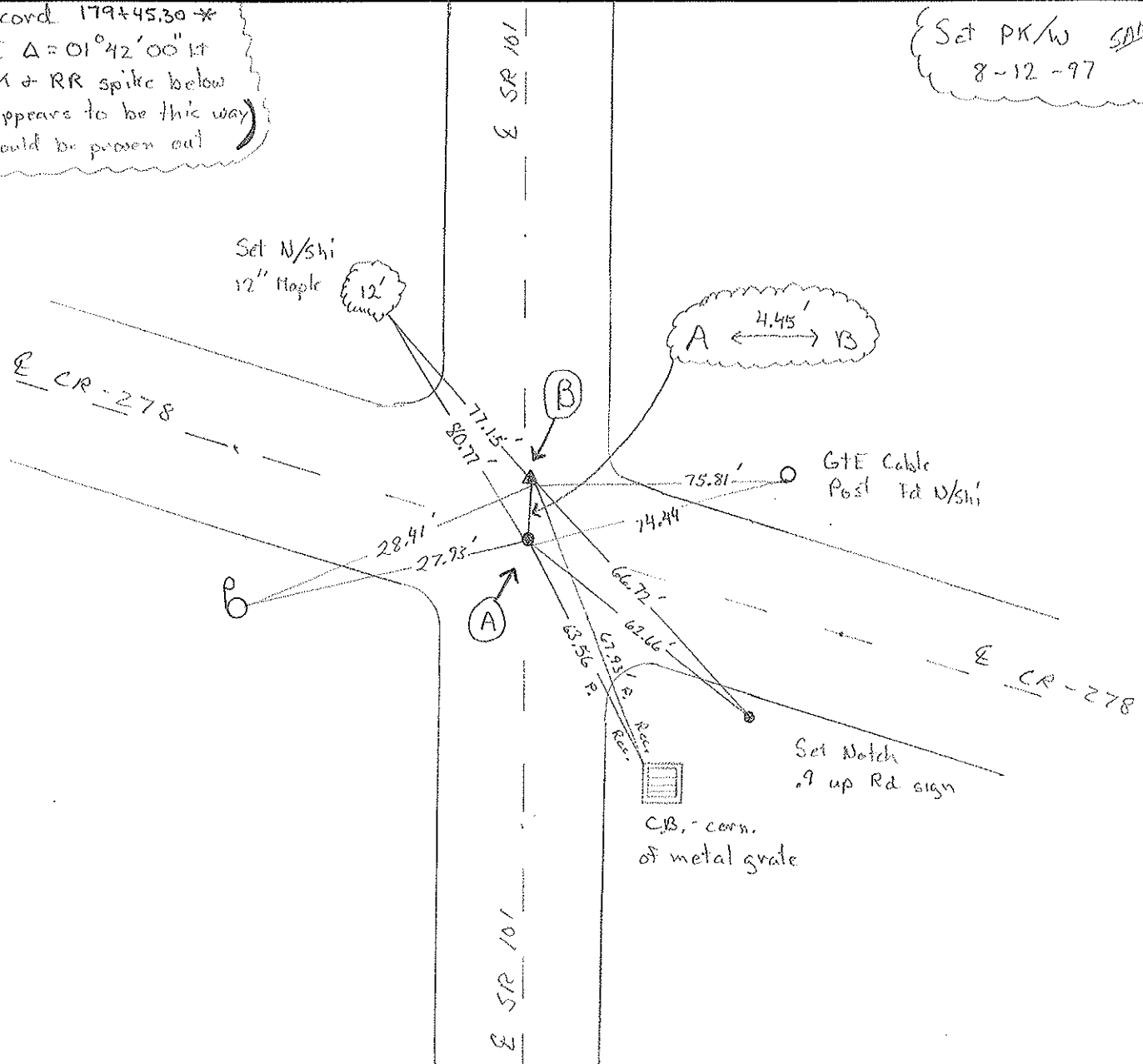
TO EDGE PAVEMENT

S.L.M. A = 11+794 SK B = 11+798.5 SK



Record 179+45.30 \*  
 PI Δ = 01°42'00" RT  
 PK + RR spike below  
 \* Appears to be this way  
 (Should be proven out)

Set PK/W SMH  
 8-12-97



# O.D.O.T. DISTRICT 2 SURVEY OFFICE

PERSONNEL

NOTES Cronin

H.C. Ripple

R.C. Geyman

REFERENCE NO. 15

SHEET 13 OF     

DATE 10/14/87

WEATHER sunny - windy

TEMP. 62°

ROUTE #101

COUNTY Sandusky

TOWNSHIP York

SECTION 4

T 4 N R 17 E

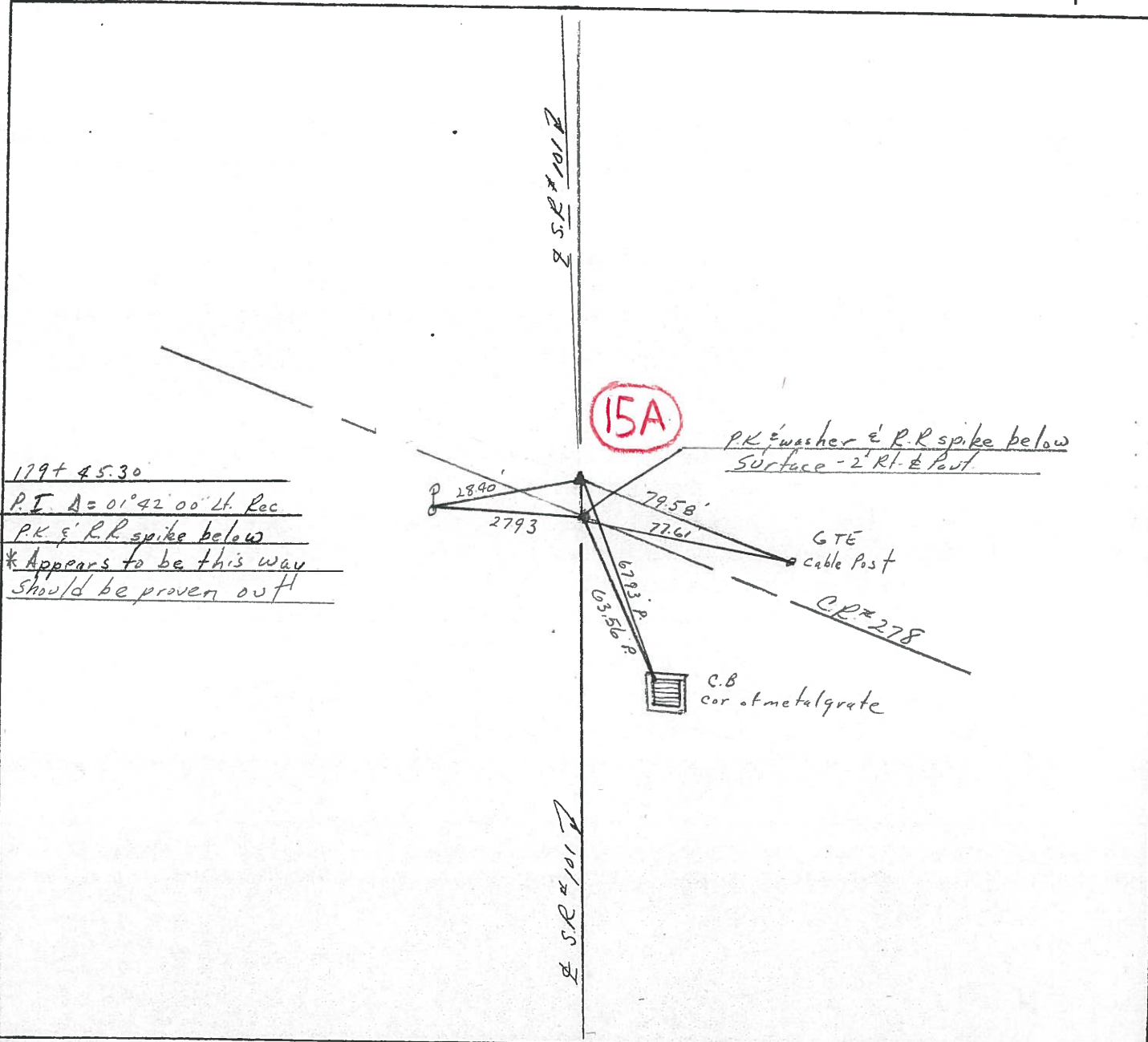
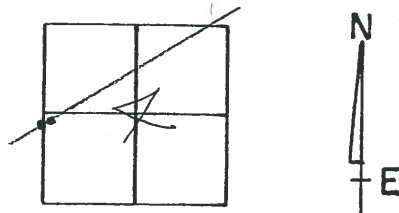
TYPE MONUMENT P.K. & washer

ON SURFACE - BELOW on surface

LEFT - ☉ PAV'T. - RIGHT 1' Rt. & Pavt.

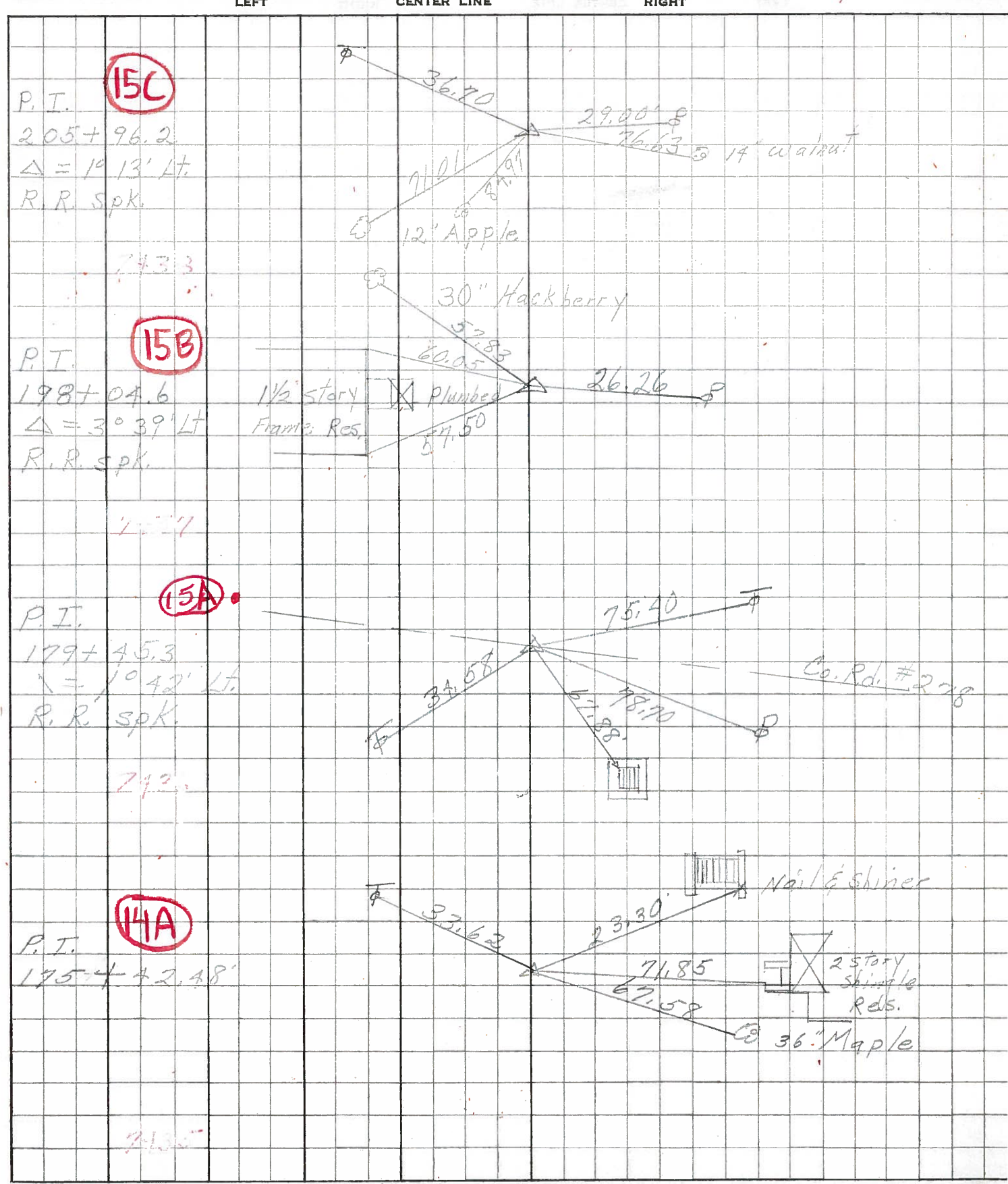
TO      EDGE PAVEMENT

S.L.M. old Sta. 179+45.30 \*



PERSONNEL	TITLE	PERSONNEL	TITLE	COUNTY	DATE	WEATHER	TEMP.
Schneider		Potts		Sandusky	4-10-68	showers	55°
Mosser				S. R. 101			
Barbour				SEC. N.E. of Clyde			
Redding							

DESCRIPTION Ties for Control Points JOB NO. \_\_\_\_\_





PERSONNEL TITLE PERSONNEL TITLE COUNTY Sandusky DATE Feb. 5-1964  
 Krabill \_\_\_\_\_  
 Kowaleski \_\_\_\_\_ S. R. #101 WEATHER \_\_\_\_\_  
 Geyman \_\_\_\_\_  
 Bruggeman \_\_\_\_\_ SEC. \_\_\_\_\_ TEMP. \_\_\_\_\_

DESCRIPTION U.S. #20 North to Erie Co. Line JOB NO. \_\_\_\_\_

