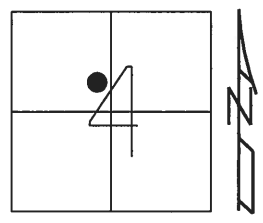


O.D.O.T. DISTRICT 2 SURVEY OFFICE (USE ONLY)

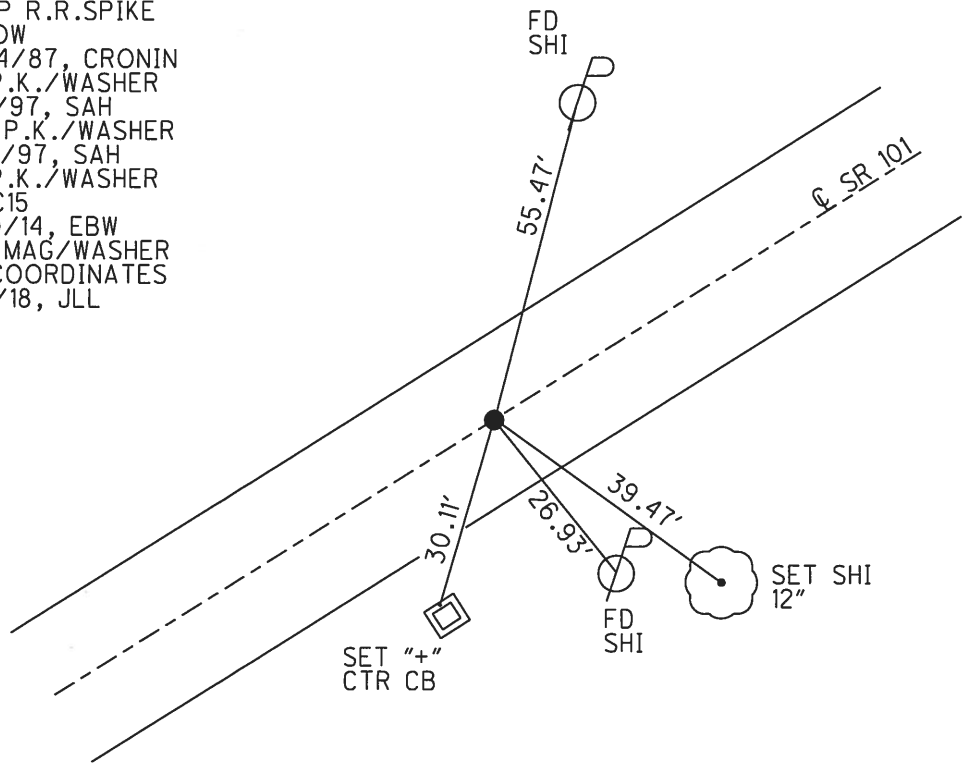
PERSONNEL \_\_\_\_\_ REFERENCE NO. 15 C SHEET 35 OF 39  
 NOTES AUBLE DATE 3/7/18 ROUTE SR 101  
 H.C. LEU WEATHER WINDY COUNTY SANDUSKY  
 R.C. AUBLE TEMP. 36° TOWNSHIP YORK  
 \_\_\_\_\_ SECTION 4  
 \_\_\_\_\_ T 4 N R 17 E

TYPE MONUMENT P.K./WASHER  
 ON SURFACE - ~~BELOW~~ ON  
 LEFT - ☉ PAV'T - RIGHT ON  
6' TO RT EDGE PAVEMENT  
 S.L.M. 410+84.58



Grid: Northing: 609330.523 Easting: 1856244.922

RECORD: P.I.  
 STA. 205+96.2  
 $\Delta = 01^{\circ}13' \text{ LT}$   
 FD P.K./WASHER  
 ATOP R.R.SPIKE  
 BELOW  
 10/14/87, CRONIN  
 FD P.K./WASHER  
 8/4/97, SAH  
 SET P.K./WASHER  
 8/12/97, SAH  
 FD P.K./WASHER  
 REFC15  
 11/10/14, EBW  
 SET MAG/WASHER  
 BY COORDINATES  
 3/7/18, JLL



# O.D.O.T. DISTRICT 2 SURVEY OFFICE

PERSONNEL \_\_\_\_\_

REFERENCE NO. \_\_\_\_\_

SHEET 21 OF 37

NOTES Huss

H.C. Van Dusen

R.C. Moser

DATE 08-04-97

WEATHER Cldy Fair

TEMP. +80°F

ROUTE 101

COUNTY Sandusky

TOWNSHIP York

SECTION 4

T 4 N R 17 E

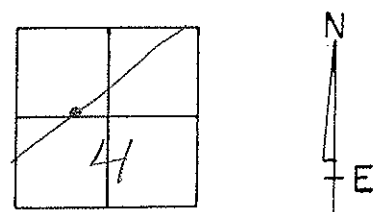
TYPE MONUMENT PK/W

ON SURFACE - ~~BELOW~~ surface

~~LEFT~~ - E PAV T. - ~~RIGHT~~ E Pavt.

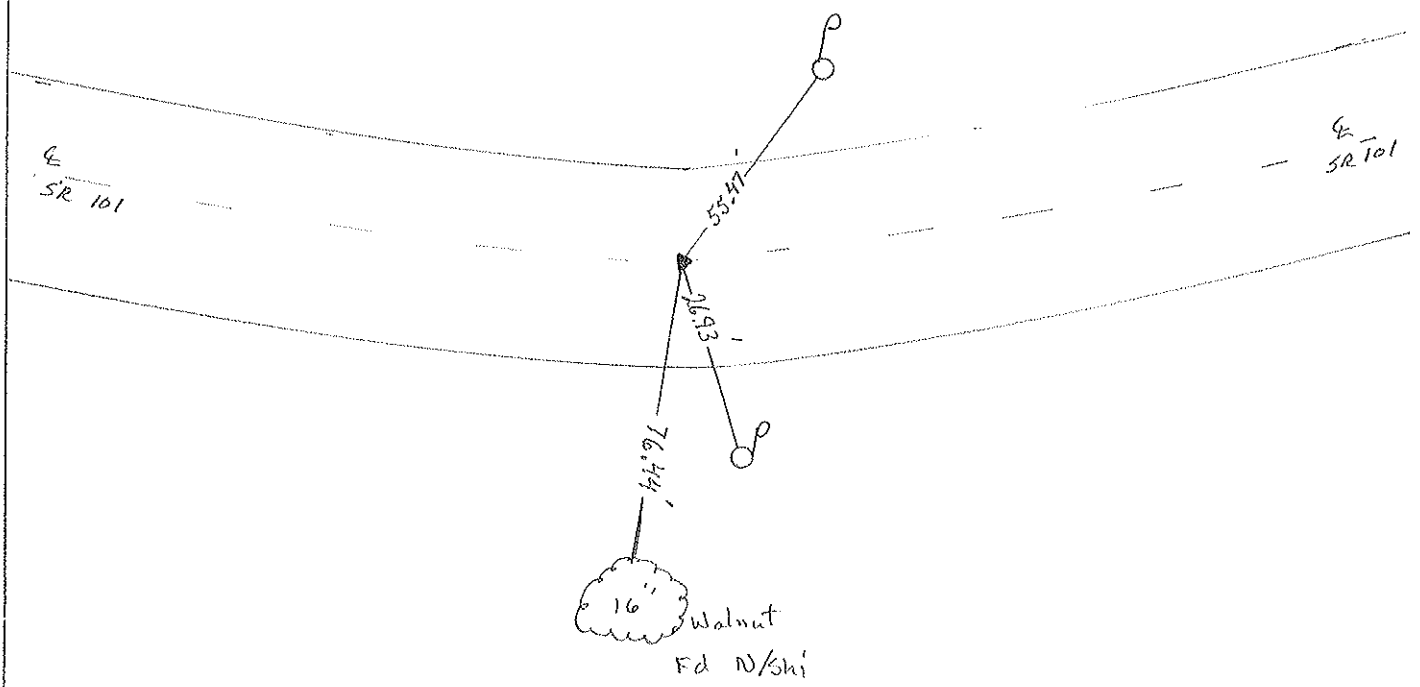
9.6 TO rt. EDGE PAVEMENT

S.L.M. 12 T 556.5 SLK



Record 205+96.00  
 PI D = 01° 13' 00" Lt Rec.  
 PK/W atop RR spike &  
 below surface

Set PK/W  
 8-12-97 SAH



O.D.O.T. DISTRICT 2 SURVEY OFFICE

PERSONNEL \_\_\_\_\_

REFERENCE NO. \_\_\_\_\_

SHEET 15 OF \_\_\_\_\_

NOTES Cronin

H.C. Ripple

R.C. Barbour

DATE 10/28/87

WEATHER sunny

TEMP. 52°

ROUTE 101

COUNTY Sandusky

TOWNSHIP York

SECTION 4

T. & N. R. 17 E

TYPE MONUMENT P.K. & washer

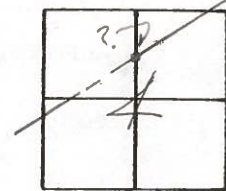
ON SURFACE - BELOW on surface

LEFT - & PAV'T. - RIGHT & Pav't.

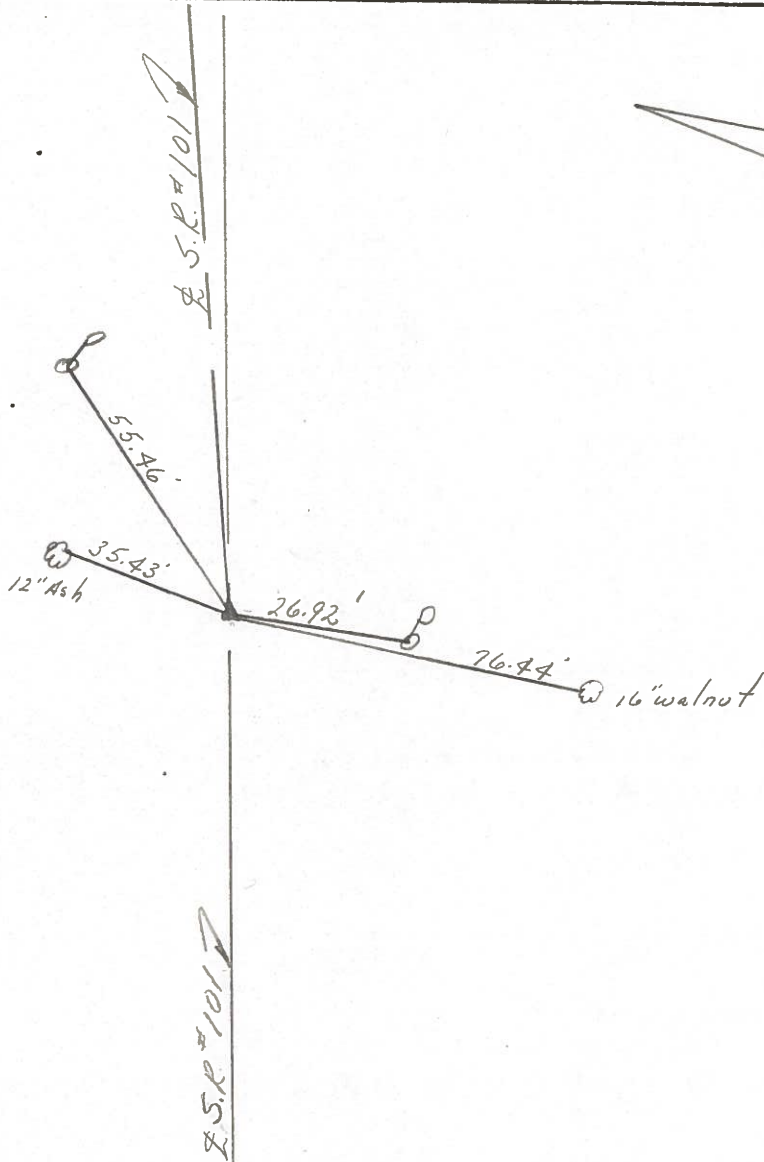
TO \_\_\_\_\_ EDGE PAVEMENT

S.L.M. old 205+96.20

15C



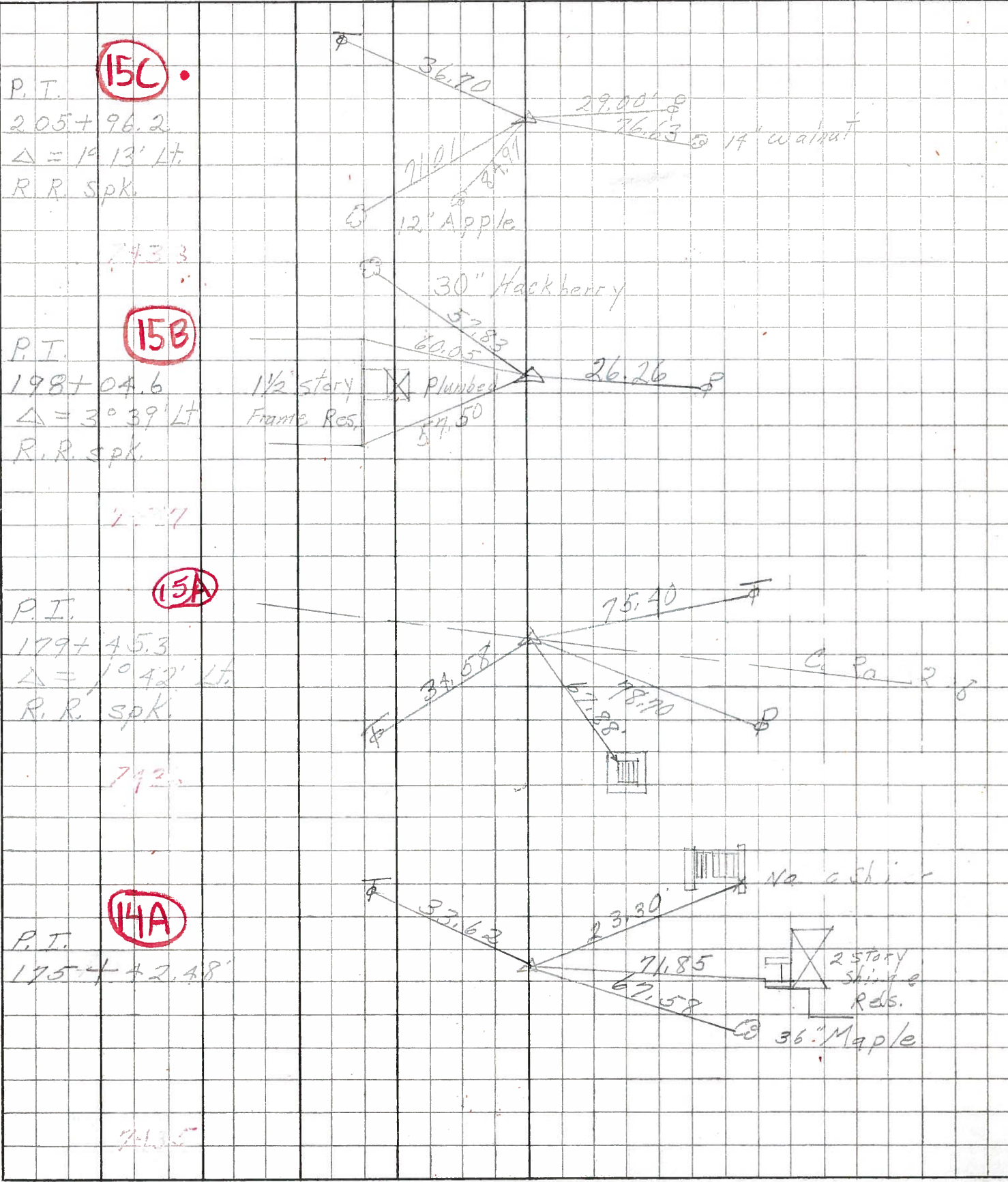
P.I. - Δ = 01° 13' 00" Lt Rec.  
P.K. & washer at top P.R.  
spike & below surface



PERSONNEL	TITLE	PERSONNEL	TITLE	COUNTY	DATE	S. R.	WEATHER	TEMP.
Schneider		Potts		Sandusky	4-10-68	101	Showers	55°
Mosser								
Barbour								
Redding								

DESCRIPTION: Ties for Control Points

LEFT CENTER LINE RIGHT JOB NO.





PERSONNEL TITLE PERSONNEL TITLE COUNTY Sandusky DATE Feb. 5-1964  
 Krabill \_\_\_\_\_ S. R. #101 WEATHER \_\_\_\_\_  
 Kowaleski \_\_\_\_\_ SEC. \_\_\_\_\_ TEMP. \_\_\_\_\_  
 Beyman \_\_\_\_\_  
 Bruggeman \_\_\_\_\_  
 DESCRIPTION From U.S. 20 North to Fries Cr. Line JOB NO. \_\_\_\_\_

