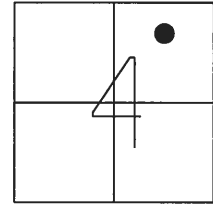


O.D.O.T. DISTRICT 2 SURVEY OFFICE (USE ONLY)

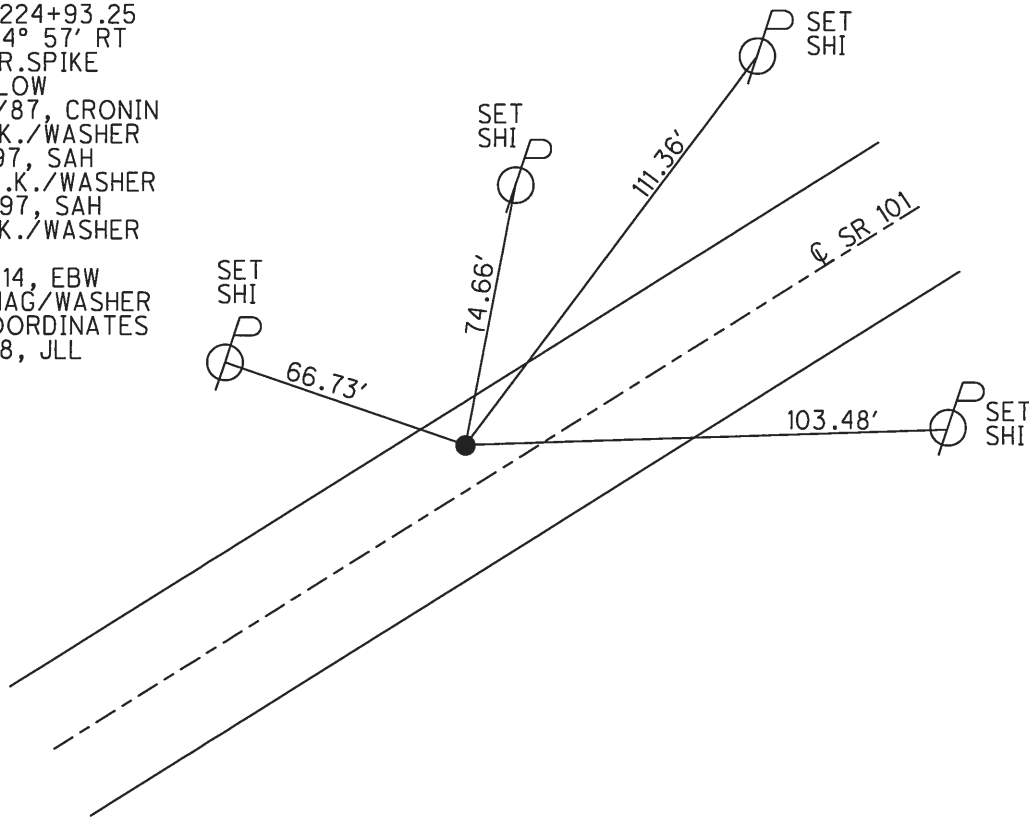
PERSONNEL \_\_\_\_\_ REFERENCE NO. 16 SHEET 36 OF 39  
 NOTES AUBLE DATE 3/7/18 ROUTE SR 101  
 H.C. LEU WEATHER WINDY COUNTY SANDUSKY  
 R.C. AUBLE TEMP. 36° TOWNSHIP YORK  
 \_\_\_\_\_ SECTION 4  
 \_\_\_\_\_ T 4 N R 17 E

TYPE MONUMENT P.K./WASHER  
~~ON SURFACE~~ - BELOW 2"  
 LEFT - ☉ PAV'T - ~~RIGHT~~ 5.6'  
4.1' TO LT EDGE PAVEMENT  
 S.L.M. 429+81.26



Grid: Northing: 610478.092 Easting: 1857755.053

RECORD: P.I.  
 STA. 224+93.25  
 $\Delta = 04^\circ 57' RT$   
 FD R.R.SPIKE  
 4" BELOW  
 10/14/87, CRONIN  
 FD P.K./WASHER  
 8/4/97, SAH  
 SET P.K./WASHER  
 8/12/97, SAH  
 FD P.K./WASHER  
 REF16  
 11/10/14, EBW  
 SET MAG/WASHER  
 BY COORDINATES  
 3/7/18, JLL



# O.D.O.T. DISTRICT 2 SURVEY OFFICE

PERSONNEL \_\_\_\_\_

REFERENCE NO. \_\_\_\_\_

SHEET 22 OF 37

NOTES Huss

H.C. Van Dusen

R.C. Moscow

DATE 8-4-97

WEATHER Cldy. Fair

TEMP. +80°F

ROUTE 101

COUNTY Sandusky

TOWNSHIP York

SECTION 4

T 4 N R 17 E

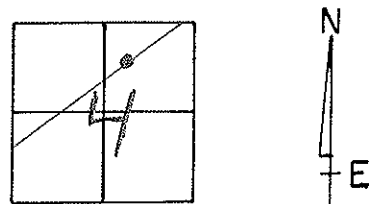
TYPE MONUMENT PK-Washer

ON SURFACE - ~~BELOW~~ surface

LEFT - ~~UP~~ RIGHT 5.4' Lt

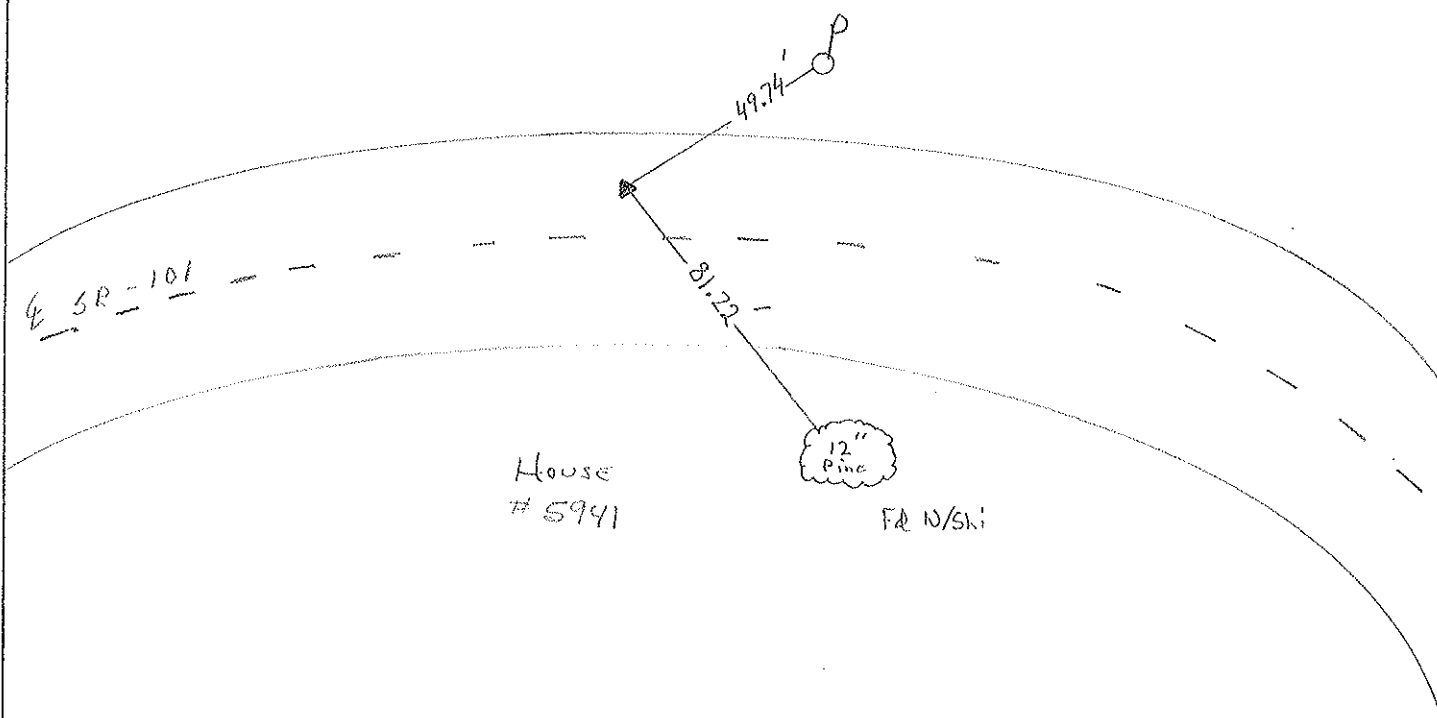
4ol TO Lt. EDGE PAVEMENT

S.L.M. 13+137 SCK



Record:  
 O.D. Sta. 224+93.25  
 P.I. Δ = 04° 57' 00" R.t.  
 R.R. SPIKE ± 4" Below

Set PK/W  
 8-12-97 SAH



O.D.O.T. DISTRICT 2 SURVEY OFFICE

PERSONNEL

REFERENCE NO. \_\_\_\_\_

SHEET 16 OF \_\_\_\_\_

NOTES Cronin

H.C. Ripple

R.C. Barbour

DATE 10/28/87

WEATHER sunny

TEMP. 52°

ROUTE #101

COUNTY Sandusky

TOWNSHIP York

SECTION 4

T 4 N R 17 E

TYPE MONUMENT P.K. & washer

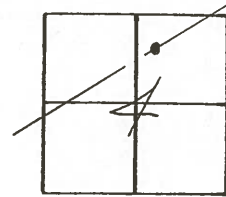
ON SURFACE - BELOW on surface

LEFT - ☉ PAV'T. - RIGHT 5' Lt. & Pav't.

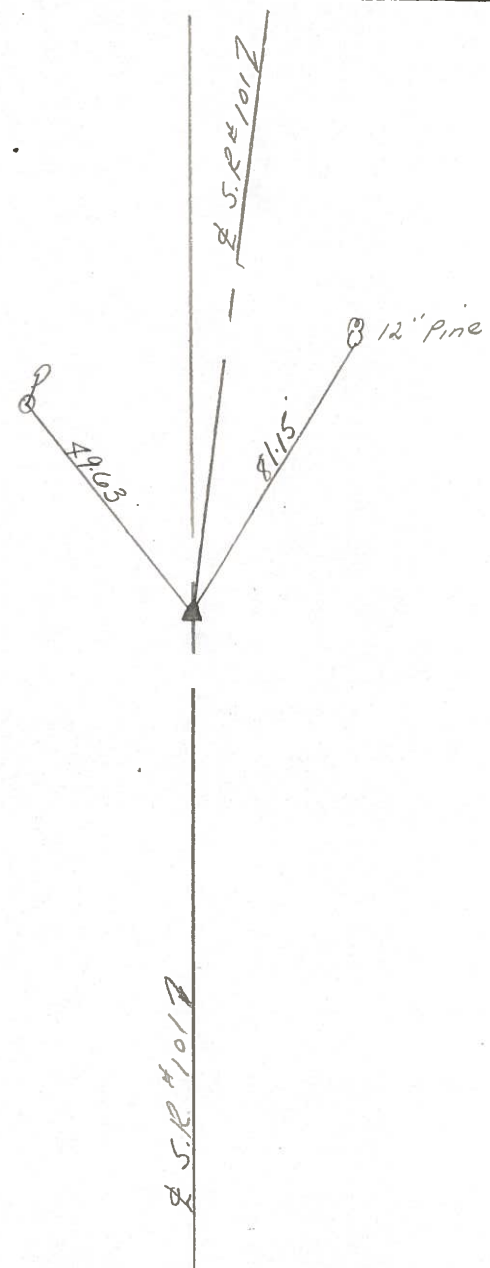
TO \_\_\_\_\_ EDGE PAVEMENT

S.L.M. old Sta. 224+93.25

16



P.I. - A = 04° 57' 00" Rt. Rec.  
R.R. spike 4" ±  
below surface

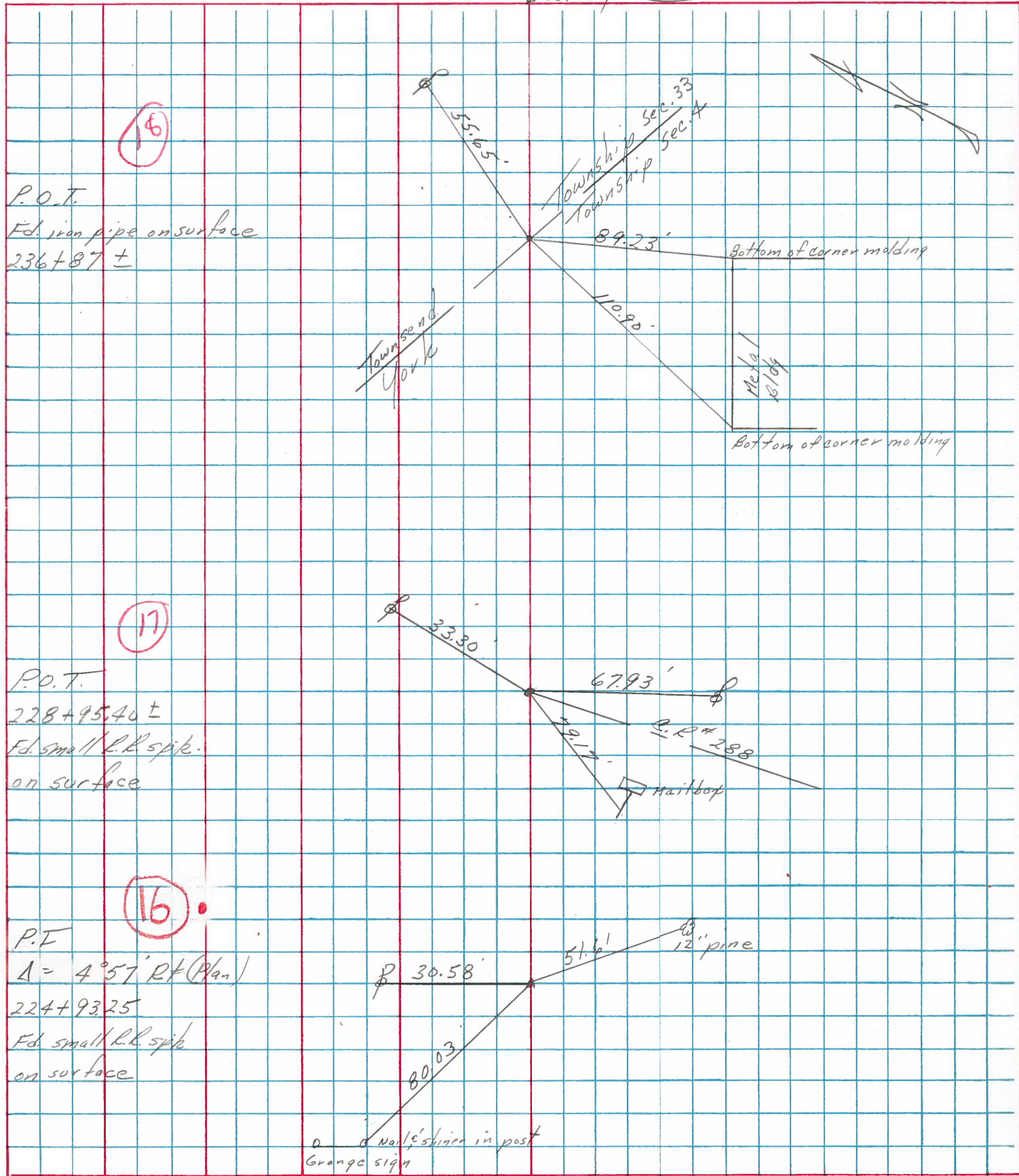


S.R. #1017

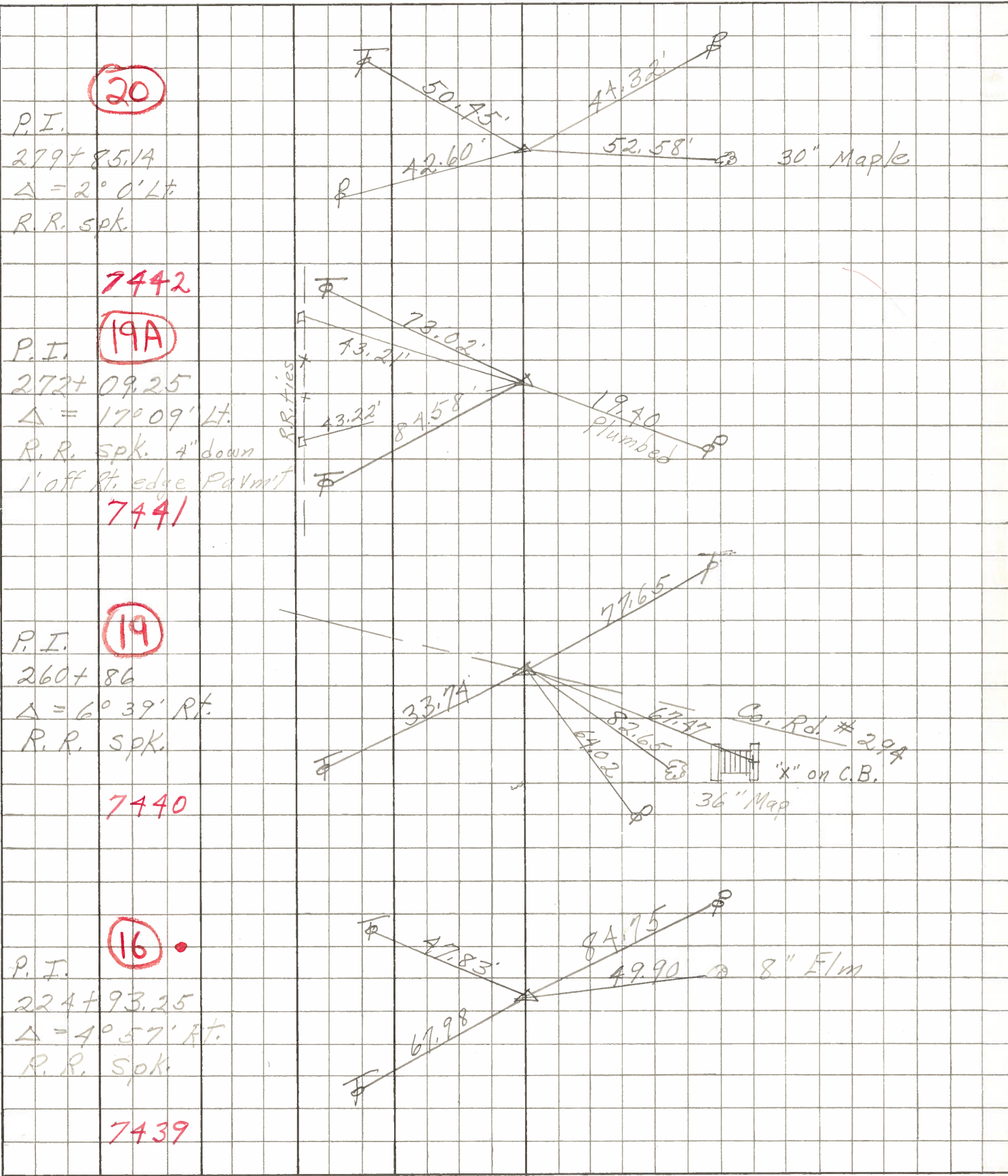
PERSONNEL	TITLE	PERSONNEL	TITLE
Cronin			
Ripple			
Geyman			

COUNTY Sandusky DATE 3/14/77  
 S. R. # 101 WEATHER overcast  
 Clyde N.E. to County line  
 SEC. San. 101-(388-11.90) TEMP. 48°

DESCRIPTION Tics for Control Points LEFT CENTER LINE SURVEY RIGHT JOB NO.



PERSONNEL	TITLE	PERSONNEL	TITLE	COUNTY	<u>Sand</u>	DATE	
<u>Schneider</u>		<u>Potts</u>		S. R.	<u>101</u>	WEATHER	
<u>Mosser</u>	<u>tape</u>			SEC.	<u>N.E. of</u>	TEMP.	
<u>Barbour</u>					<u>Points</u>		
<u>Redding</u>							
DESCRIPTION	<u>Ties for C</u>					JOB NO.	
	LEFT	CENTER LINE	RIGHT				



PERSONNEL TITLE PERSONNEL TITLE

KRABILL  
KOWALESKI  
Geyman  
Bruggeman

COUNTY Sandusky DATE Feb. 5-1964

S. R. # 101 WEATHER

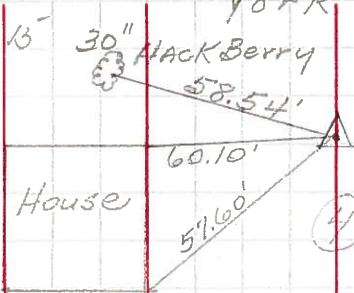
SEC. TEMP.

DESCRIPTION From U.S. 20 North to Fries Co. Line JOB NO.

LEFT CENTER LINE RIGHT

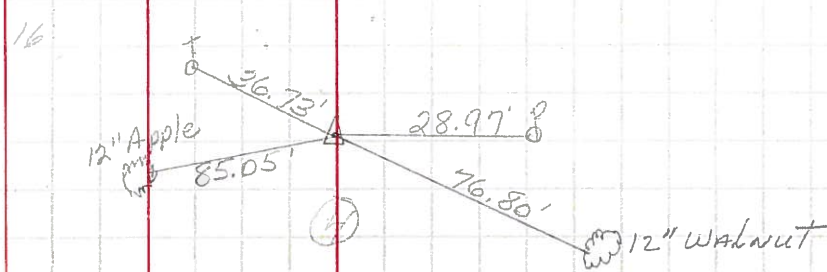
Sta. 198+04.6  
Δ = 30° 39' Lt.  
R.R. Spike 2-5-64

15B



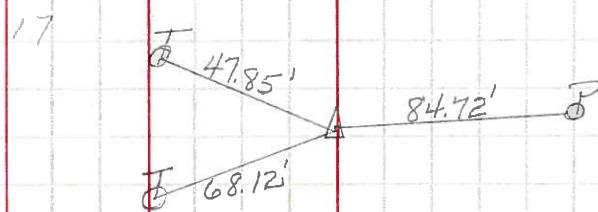
Sta. 205+96.2  
Δ = 10° 13' Lt.  
R.R. Spike 2-5-64

15C



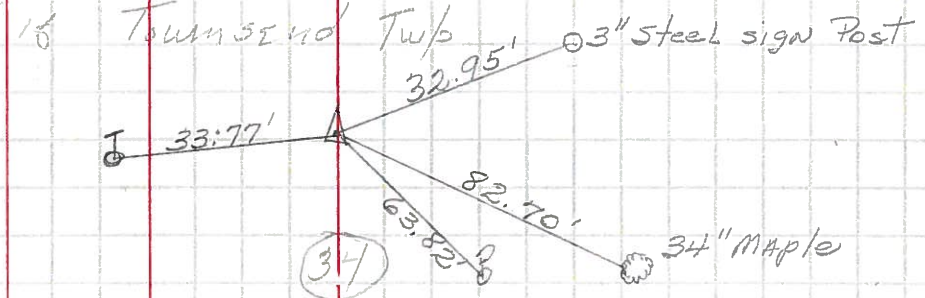
Sta. 224+93.25  
Δ = 40° 57' Rt.  
R.R. Spike 2-5-64

16



Sta. 260+86  
Δ = 60° 39' Rt.  
R.R. Spike 2-5-64

19



Sta. 272+09.25  
Δ = 170° 09' Lt.  
Iron Pin off Pavement  
2-5-64

19A

