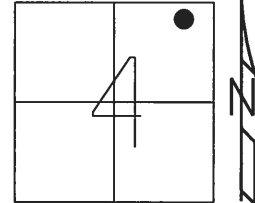


O.D.O.T. DISTRICT 2 SURVEY OFFICE (USE ONLY)

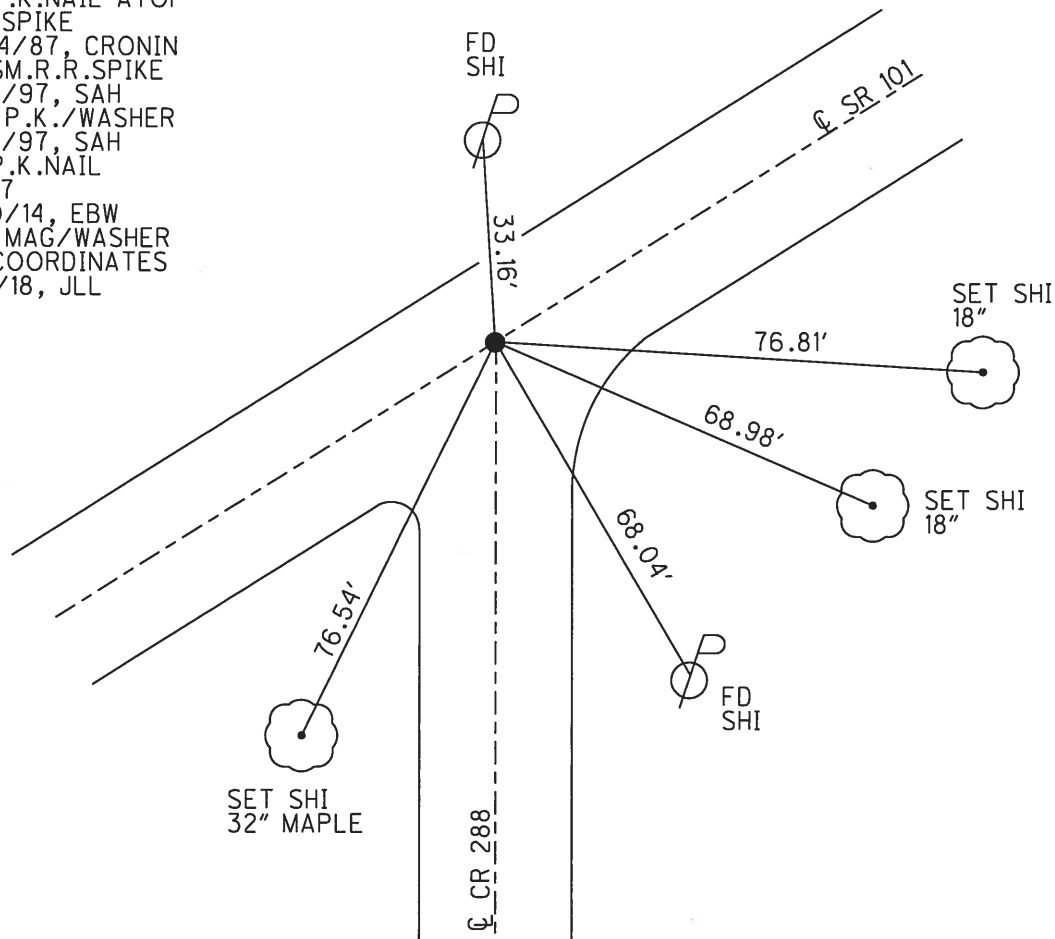
PERSONNEL	REFERENCE NO.	17	SHEET	37	OF	39
NOTES	AUBLE	DATE	3/8/18	ROUTE	SR 101	
H.C.	LEU	WEATHER	WINDY	COUNTY	SANDUSKY	
R.C.	AUBLE	TEMP.	29°	TOWNSHIP	YORK	
				SECTION	4	
				T	4	N
				R	17	E

TYPE MONUMENT P.K.NAIL  
~~ON SURFACE~~ - BELOW 2"  
 LEFT - ℄ PAV'T - ~~RIGHT~~ 0.2'  
9.2' TO LT EDGE PAVEMENT  
 S.L.M. 432+79.25



Grid: Northing: 610637.142 Easting: 1858007.042

RECORD: P.O.T.  
 STA. 228+95.4±  
 FD P.K.NAIL ATOP  
 R.R.SPIKE  
 10/14/87, CRONIN  
 FD SM.R.R.SPIKE  
 7/31/97, SAH  
 SET P.K./WASHER  
 8/12/97, SAH  
 FD P.K.NAIL  
 REF17  
 11/10/14, EBW  
 SET MAG/WASHER  
 BY COORDINATES  
 3/8/18, JLL



# O.D.O.T. DISTRICT 2 SURVEY OFFICE

PERSONNEL \_\_\_\_\_

REFERENCE NO. 17

SHEET 23 OF 37

NOTES Huss

H.C. Dan Dusen

R.C. Cox

DATE 7-31-97

WEATHER Sunny - Fair

TEMP. +84° F

ROUTE SR-101

COUNTY Sandusky

TOWNSHIP York

SECTION 4

T 4 N R 17 E

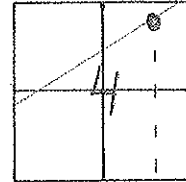
TYPE MONUMENT Small RR-spike

~~ON~~/SURFACE - ~~(BELOW)~~ 4±

~~LEFT~~ - ~~RIGHT~~ 4 Lt

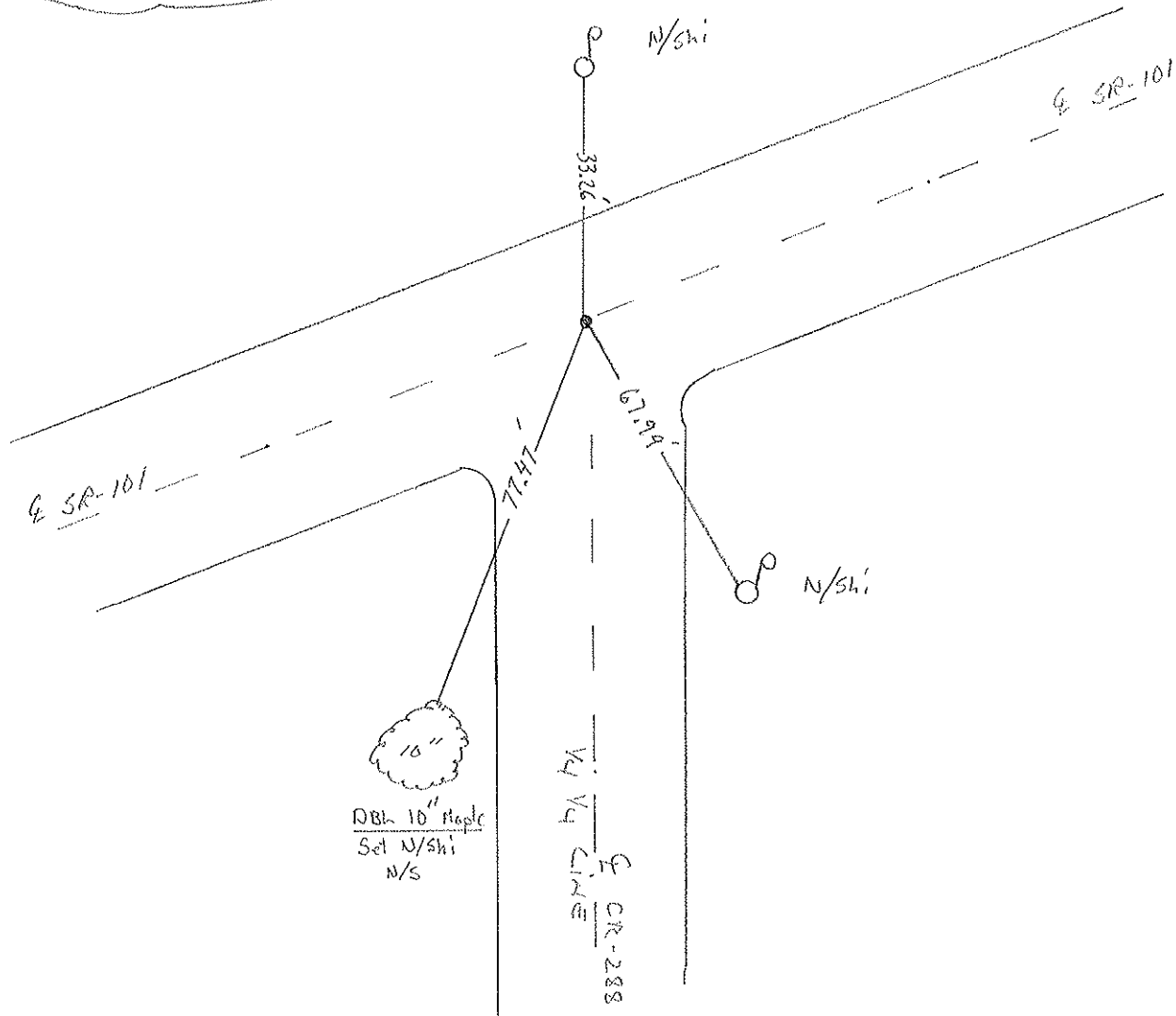
9.2' TO LT EDGE PAVEMENT

S.L.M. 13+228 SK



Record: 228495, 4±  
P.O.T.  
PK # SMALL SPIKE BELOW

Set PK/W  
8-12-97 SAH



# O.D.O.T. DISTRICT 2 SURVEY OFFICE

PERSONNEL \_\_\_\_\_

REFERENCE NO. 17

SHEET 17 OF \_\_\_\_\_

NOTES Cronin

H.C. Ripple

R.C. Barbour

DATE 10/28/87

WEATHER sunny

TEMP. 52°

ROUTE #101

COUNTY Sandusky

TOWNSHIP York

SECTION 4

T & N R 17 E

TYPE MONUMENT P.K. & washer

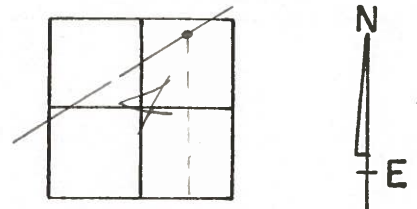
ON SURFACE - BELOW on surface

LEFT- & PAV'T. - RIGHT & Pav't.

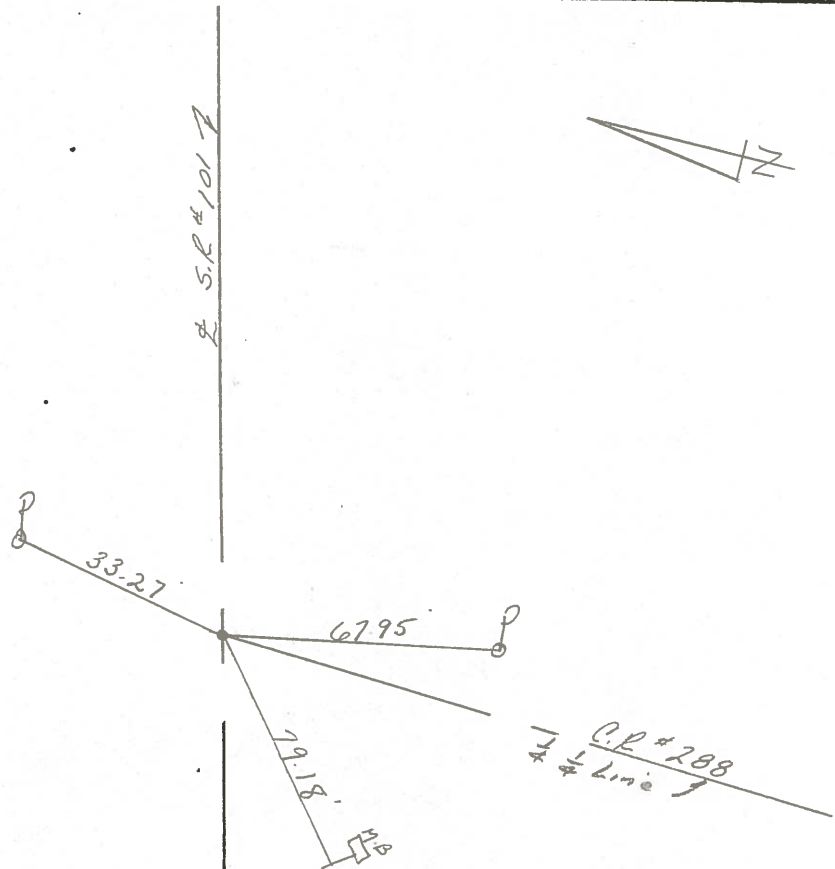
TO \_\_\_\_\_ EDGE PAVEMENT

S.L.M. old Sta. 228+95.4 ±

17



P.O.T.  
PK & small spike below  
surface



PERSONNEL	TITLE	PERSONNEL	TITLE
Cronin			
Ripple			
Geyman			

COUNTY Sandusky DATE 3/14/77  
 S. R. # 101 WEATHER overcast  
 Clyde N.E. to County Line  
 SEC. San. 101-(388-11.90) TEMP. 48°

DESCRIPTION Tics for Control Points LEFT CENTER LINE Survey RIGHT JOB NO.

