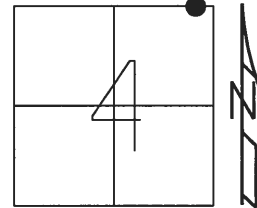


O.D.O.T. DISTRICT 2 SURVEY OFFICE (USE ONLY)

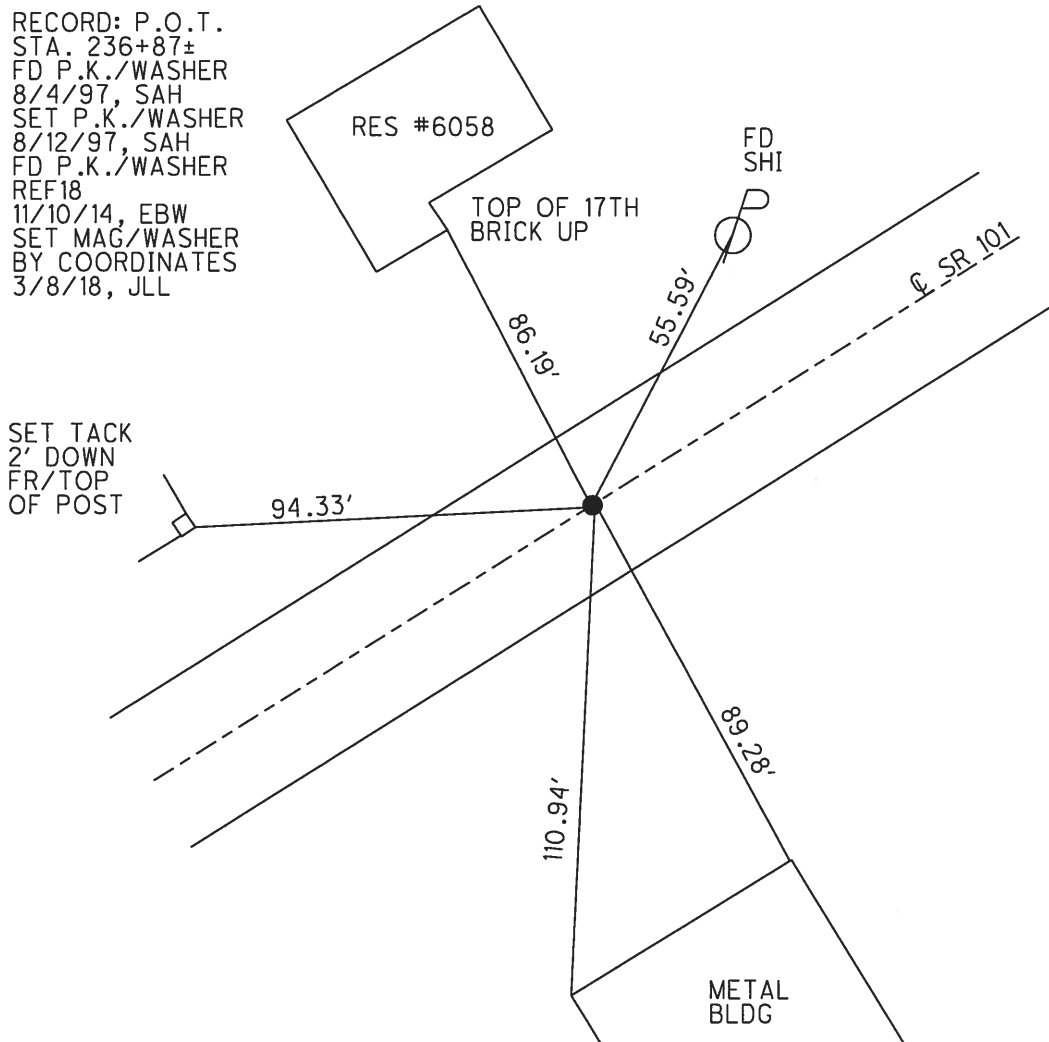
PERSONNEL	REFERENCE NO.	<u>18</u>	SHEET	<u>38</u>	OF	<u>39</u>
NOTES	AUBLE	DATE	<u>3/8/18</u>	ROUTE	<u>SR 101</u>	
H.C.	<u>LEU</u>	WEATHER	<u>WINDY</u>	COUNTY	<u>SANDUSKY</u>	
R.C.	<u>AUBLE</u>	TEMP.	<u>29°</u>	TOWNSHIP	<u>YORK</u>	
				SECTION	<u>4</u>	
				T	<u>4</u>	N
				R	<u>17</u>	E

TYPE MONUMENT P.K./WASHER  
~~ON SURFACE~~ - BELOW 4"  
 LEFT - CL PAV'T - RIGHT ON  
10.4' TO RT EDGE PAVEMENT  
 S.L.M. 441+69.75



Grid: Northing: 61112.605 Easting: 1858759.990

RECORD: P.O.T.  
 STA. 236+87±  
 FD P.K./WASHER  
 8/4/97, SAH  
 SET P.K./WASHER  
 8/12/97, SAH  
 FD P.K./WASHER  
 REF18  
 11/10/14, EBW  
 SET MAG/WASHER  
 BY COORDINATES  
 3/8/18, JLL



# O.D.O.T. DISTRICT 2 SURVEY OFFICE

PERSONNEL

REFERENCE NO. 18

SHEET 24 OF 37

NOTES Huss

H.C. VanDusen

R.C. Moser

DATE 08-04-97

WEATHER Clody Fair

TEMP. +80°F

ROUTE SR-101

COUNTY Sandusky

TOWNSHIP York

SECTION 4

T 4 N R 17 E

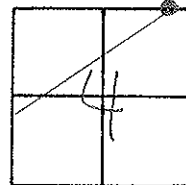
TYPE MONUMENT PK/W

ON SURFACE - ~~(BELOW)~~ 2" below

LEFT - ~~(C PAV'T - RIGHT)~~ on E

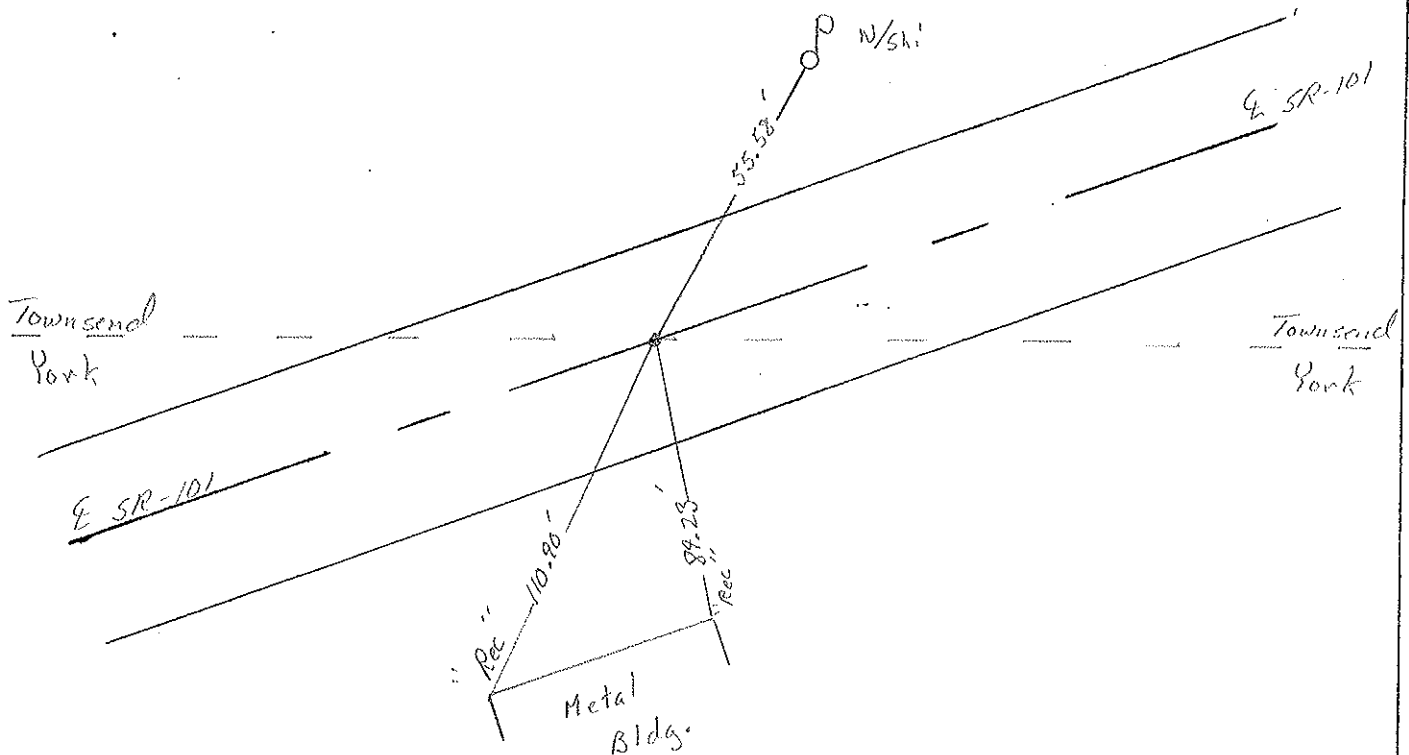
10.7 TO RT EDGE PAVEMENT

S.L.M. 13 + 500 SLK



RECORD:  
236+87+  
P.O.T.

Set PK/W  
7-30-97 SMH



O.D.O.T. DISTRICT 2 SURVEY OFFICE

PERSONNEL \_\_\_\_\_

REFERENCE NO. 18

SHEET 18 OF \_\_\_\_\_

NOTES Cronin

H.C. \_\_\_\_\_

R.C. \_\_\_\_\_

DATE \_\_\_\_\_

WEATHER \_\_\_\_\_

TEMP. \_\_\_\_\_

ROUTE #101

COUNTY Sandusky

TOWNSHIP York

SECTION 4

T 4 N R 17 E

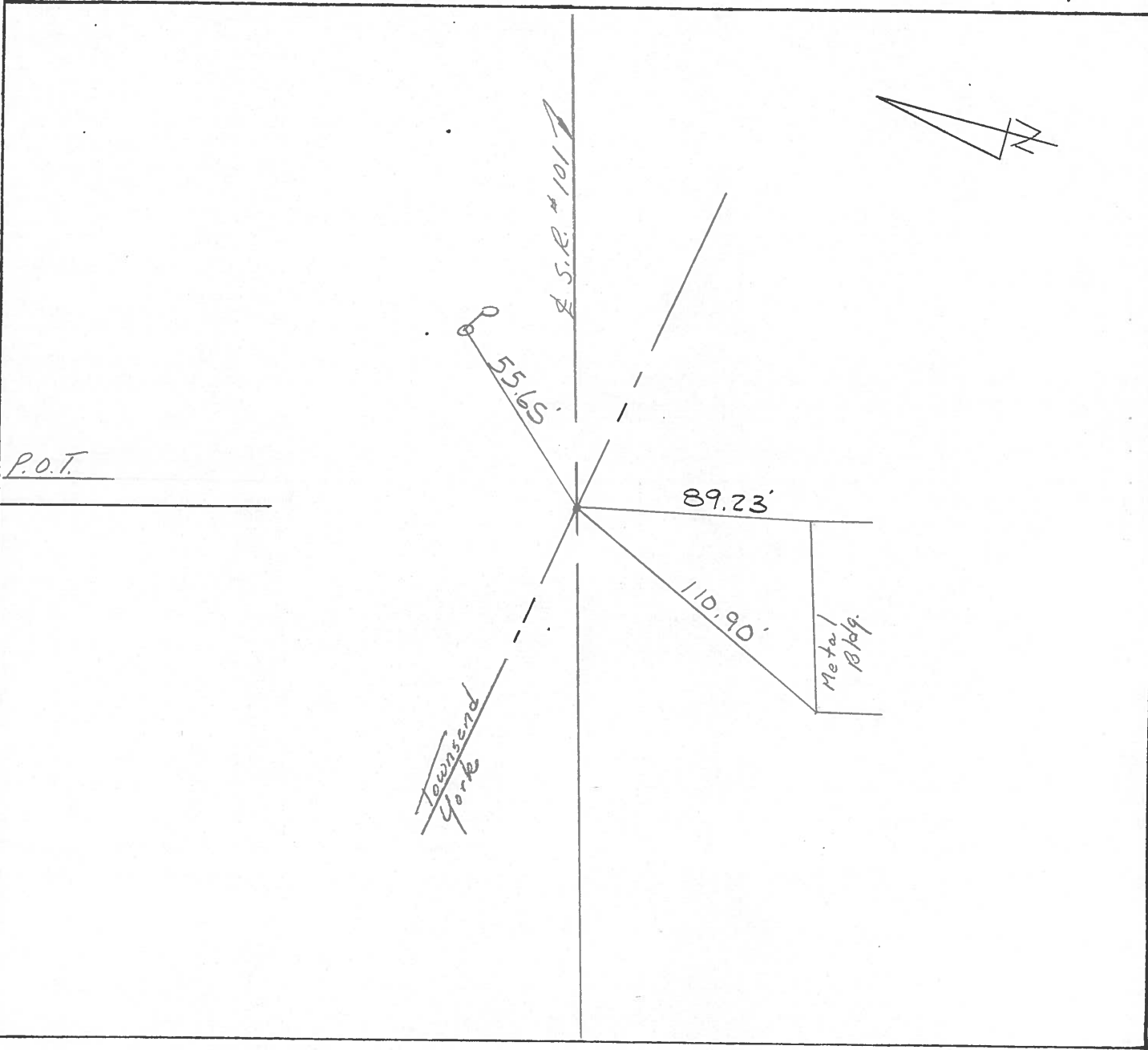
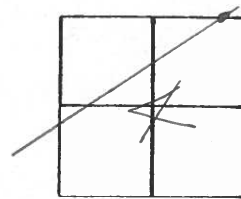
TYPE MONUMENT \_\_\_\_\_

ON SURFACE - BELOW \_\_\_\_\_

LEFT -  $\odot$  PAV'T. - RIGHT \_\_\_\_\_

\_\_\_\_\_ TO \_\_\_\_\_ EDGE PAVEMENT

S.L.M. old Sta. 236+87+



PERSONNEL TITLE PERSONNEL TITLE  
 Cronin \_\_\_\_\_  
 Ripple \_\_\_\_\_  
 Geyman \_\_\_\_\_

COUNTY Sandusky DATE 3/14/77  
 S. R. # 101 WEATHER overcast  
 Clyde N.E. To County Line  
 SEC. San. 101-(388-11.90) TEMP. 48°

DESCRIPTION Ties for Control Points LEFT CENTER LINE Survey RIGHT JOB NO.

