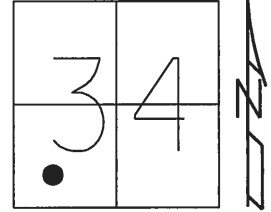


O.D.O.T. DISTRICT 2 SURVEY OFFICE (USE ONLY)

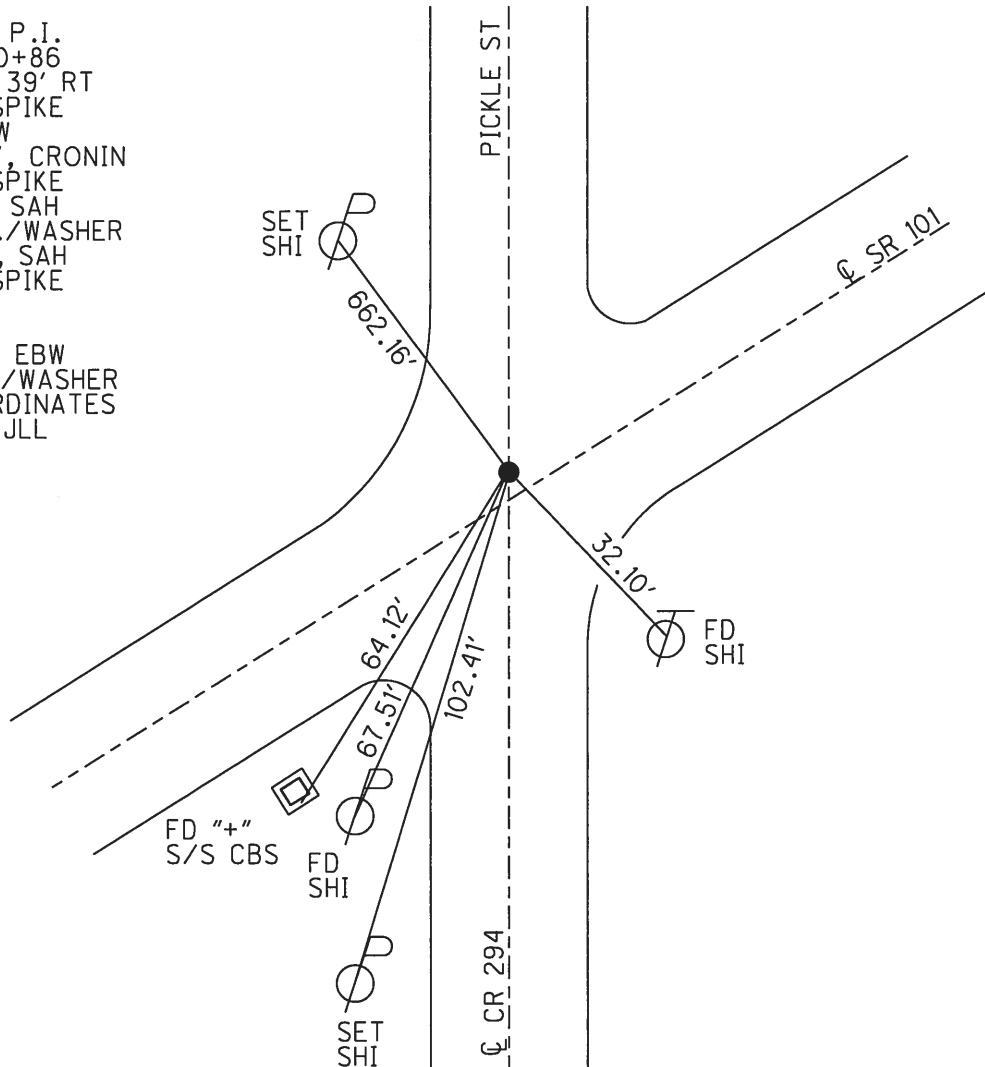
PERSONNEL	REFERENCE NO.	19	SHEET	39	OF	39
NOTES	AUBLE	DATE	3/8/18	ROUTE	SR 101	
H.C.	LEU	WEATHER	WINDY	COUNTY	SANDUSKY	
R.C.	AUBLE	TEMP.	29°	TOWNSHIP	TOWNSEND	
				SECTION	34	
				T	5	N
				R	17	E

TYPE MONUMENT R.R.SPIKE
~~ON SURFACE~~ - BELOW 2"
 LEFT - ℄ PAV'T - ~~RIGHT~~ 3.7'
 - TO - EDGE PAVEMENT
 S.L.M. 465+73.17



Grid: Northing: 612395.624 Easting: 1860792.296

RECORD: P.I.
 STA. 260+86
 $\Delta = 06^\circ 39' \text{ RT}$
 FD R.R.SPIKE
 3" BELOW
 10/14/87, CRONIN
 FD R.R.SPIKE
 8/4/97, SAH
 SET P.K./WASHER
 8/12/97, SAH
 FD R.R.SPIKE
 2" DOWN
 REF19
 11/10/14, EBW
 SET MAG/WASHER
 BY COORDINATES
 3/8/18, JLL



O.D.O.T. DISTRICT 2 SURVEY OFFICE

PERSONNEL

REFERENCE NO. 19

SHEET 25 OF 37

NOTES Huss

H.C. Van Dusen

R.C. Moser

DATE 8-4-97

WEATHER Clody Fair

TEMP. +81°F

ROUTE SR-101

COUNTY Sandusky

TOWNSHIP Townsend

SECTION 34

T 5 N R 17 E

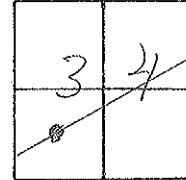
TYPE MONUMENT RR Spike

~~ON SURFACE~~ - (BELOW) 4.00

LEFT - ~~TO~~ RIGHT 3.1 Lt.

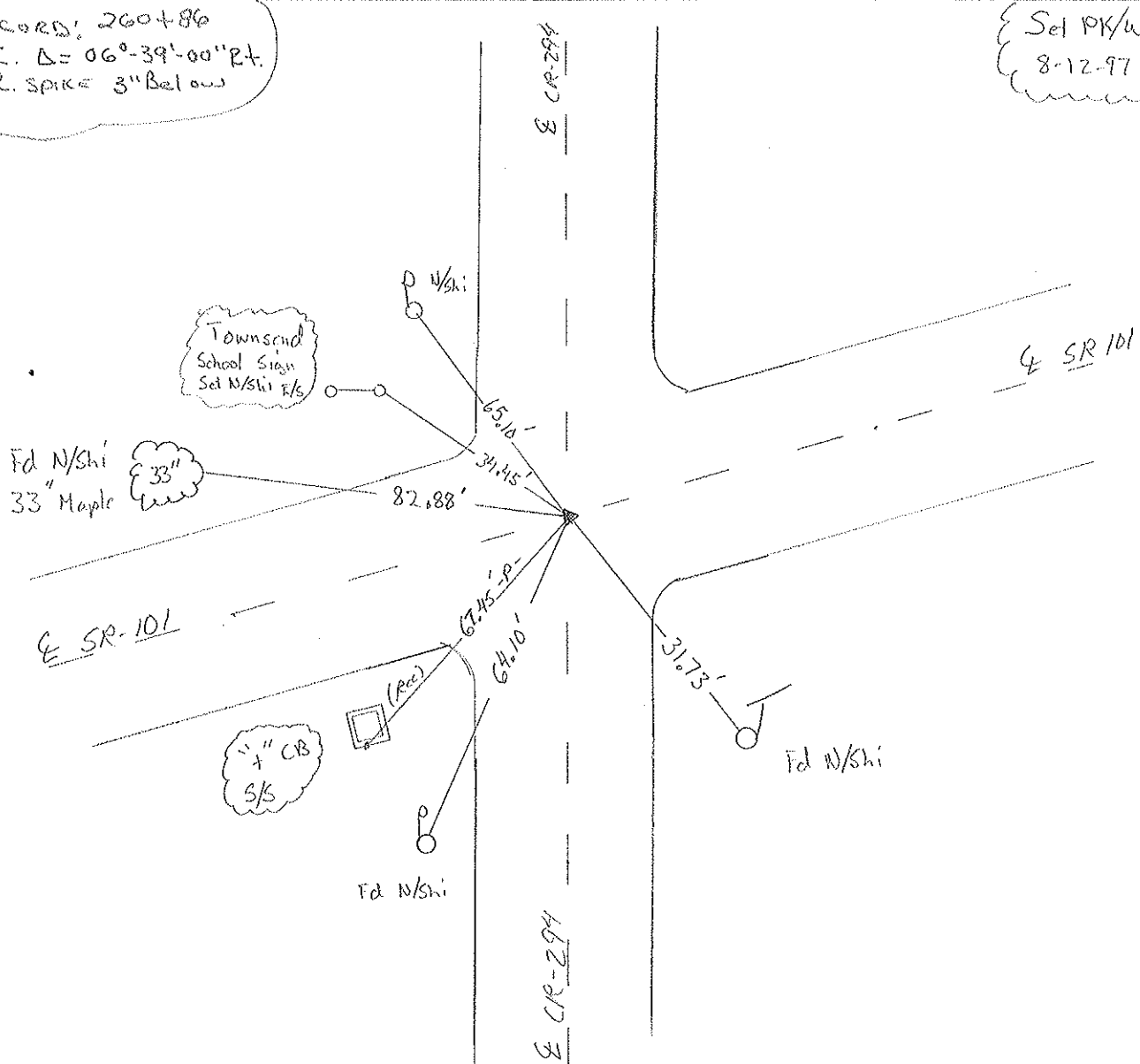
TO EDGE PAVEMENT

S.L.M. 14 + 235.4 SLK



RECORD: 260+86
 P.I. Δ = 06°-39'-00" Rt.
 R.R. SPIKE 3" Below

Set PK/W
 8-12-97 SAH



O.D.O.T. DISTRICT 2 SURVEY OFFICE

PERSONNEL

REFERENCE NO. 19

SHEET 19 OF

NOTES Cronin

H.C. Ripple

R.C. Barbour

DATE 10/28/87

WEATHER sunny

TEMP. 52°

ROUTE #101

COUNTY Sandusky

TOWNSHIP Townsend

SECTION 34

T 5 N R 17 E

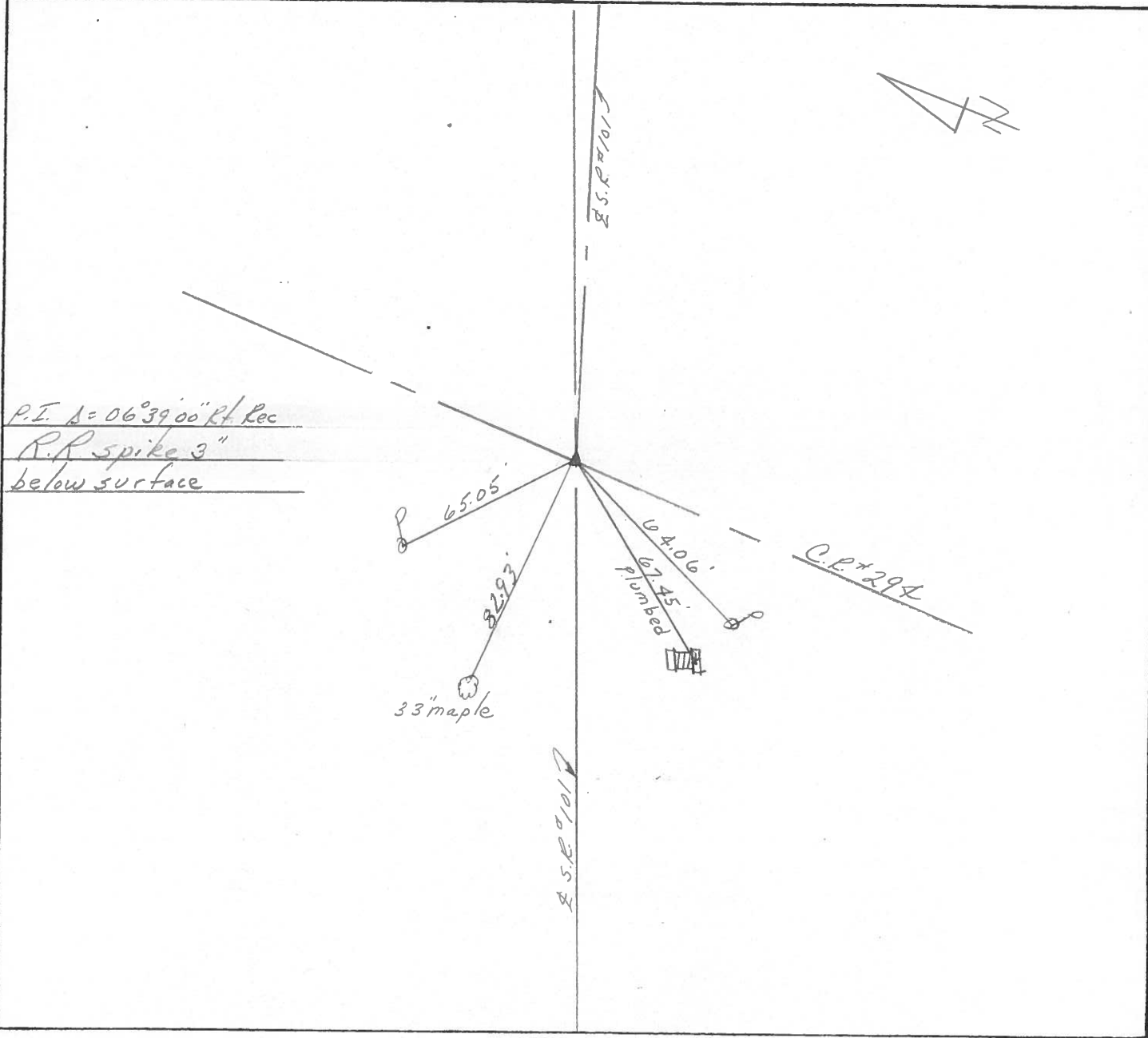
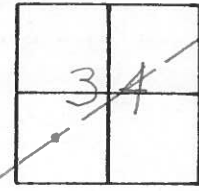
TYPE MONUMENT P.K. & washer

ON SURFACE - BELOW on surface

LEFT- & PAV'T. - RIGHT 4' Lt. & Pav't.

___ TO ___ EDGE PAVEMENT

S.L.M. old Sta 260 + 86

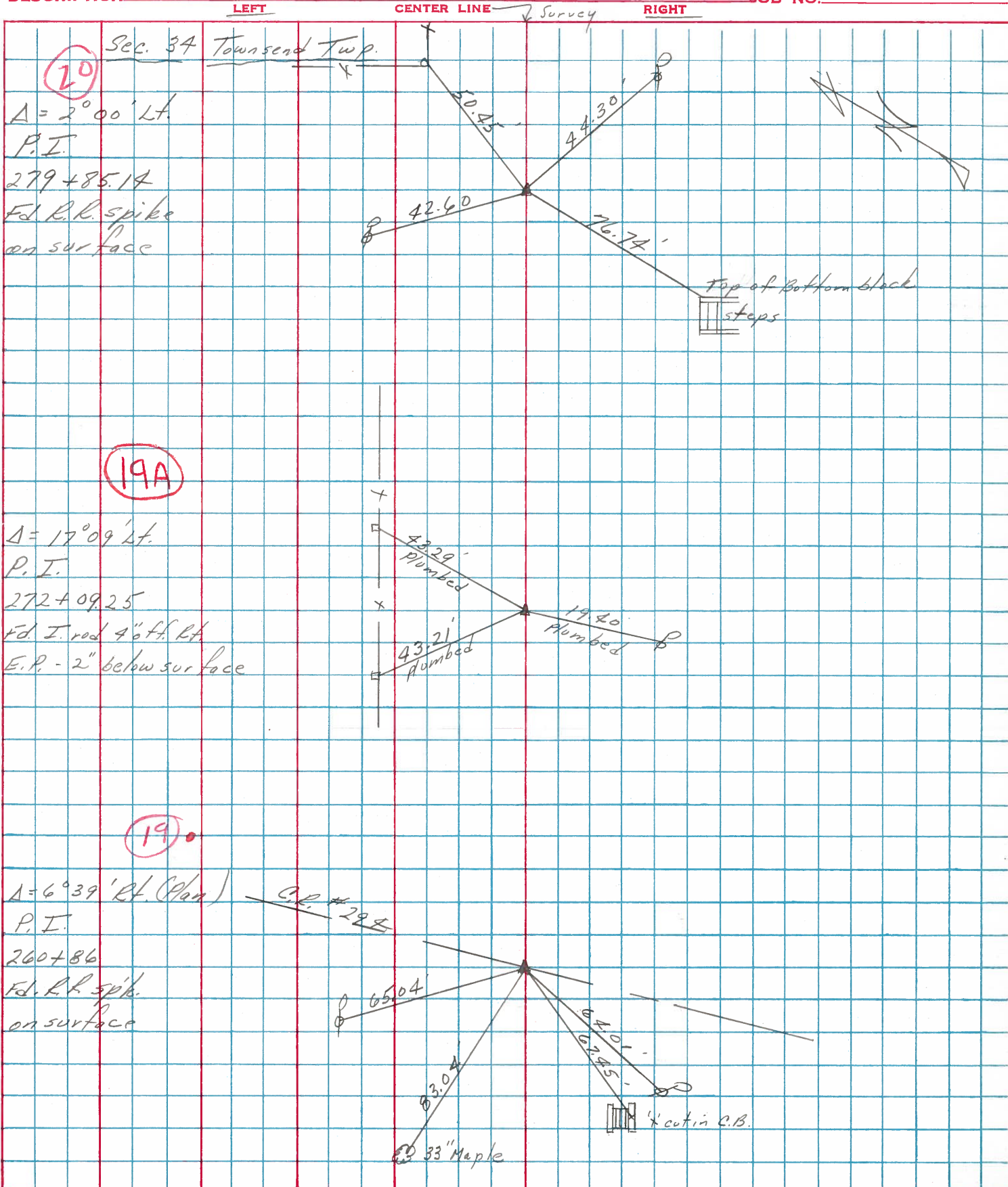


PERSONNEL TITLE PERSONNEL TITLE
 Cronin _____
 Ripple _____
 Geyman _____

COUNTY Sandusky DATE 3/14/77
 S. R. # 101 WEATHER overcast
 Clyde N.E. to County Line
 SEC. 5an. 101-(3.88-11.90) TEMP. 48°

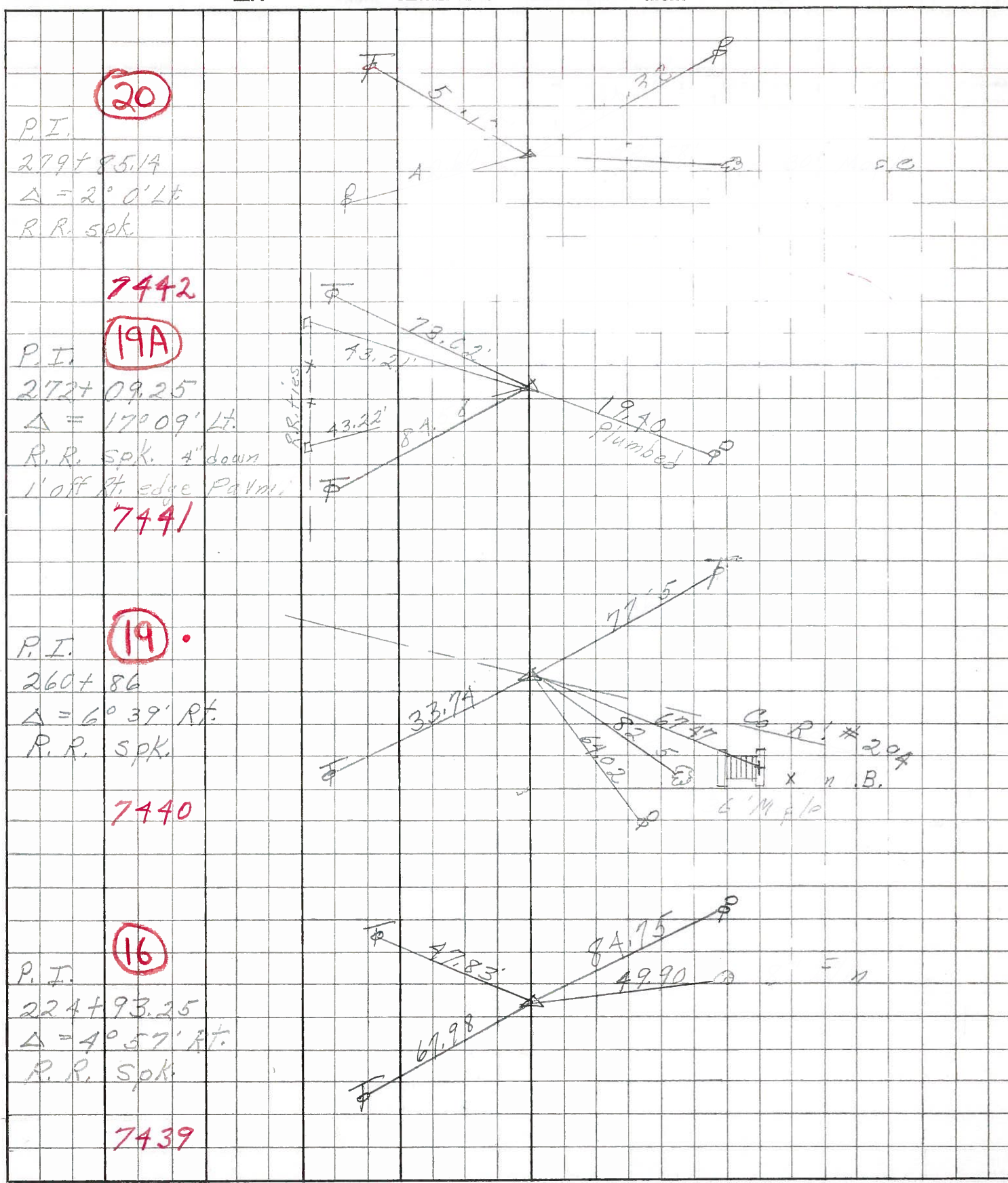
DESCRIPTION Ties For Control Points

JOB NO. _____



PERSONNEL	TITLE	PERSONNEL	TITLE	COUNTY	DATE
Schneider		Potts		Sand	
Mosser	tape			S. R. 101	WEATHER
Barbour				SEC. N.	TEMP.
Redding					

DESCRIPTION Ties for JOB NO. _____



PERSONNEL TITLE PERSONNEL TITLE COUNTY Sandusky DATE Feb. 5-1964
 Krabill _____
 Kowaleski _____ S. R. # 101 WEATHER _____
 Geyman _____
 Bruggeman _____ SEC. _____ TEMP. _____

DESCRIPTION From U.S. 20 North to Fries Co. Line JOB NO. _____

