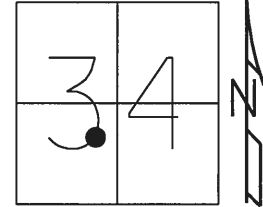


O.D.O.T. DISTRICT 2 SURVEY OFFICE (USE ONLY)

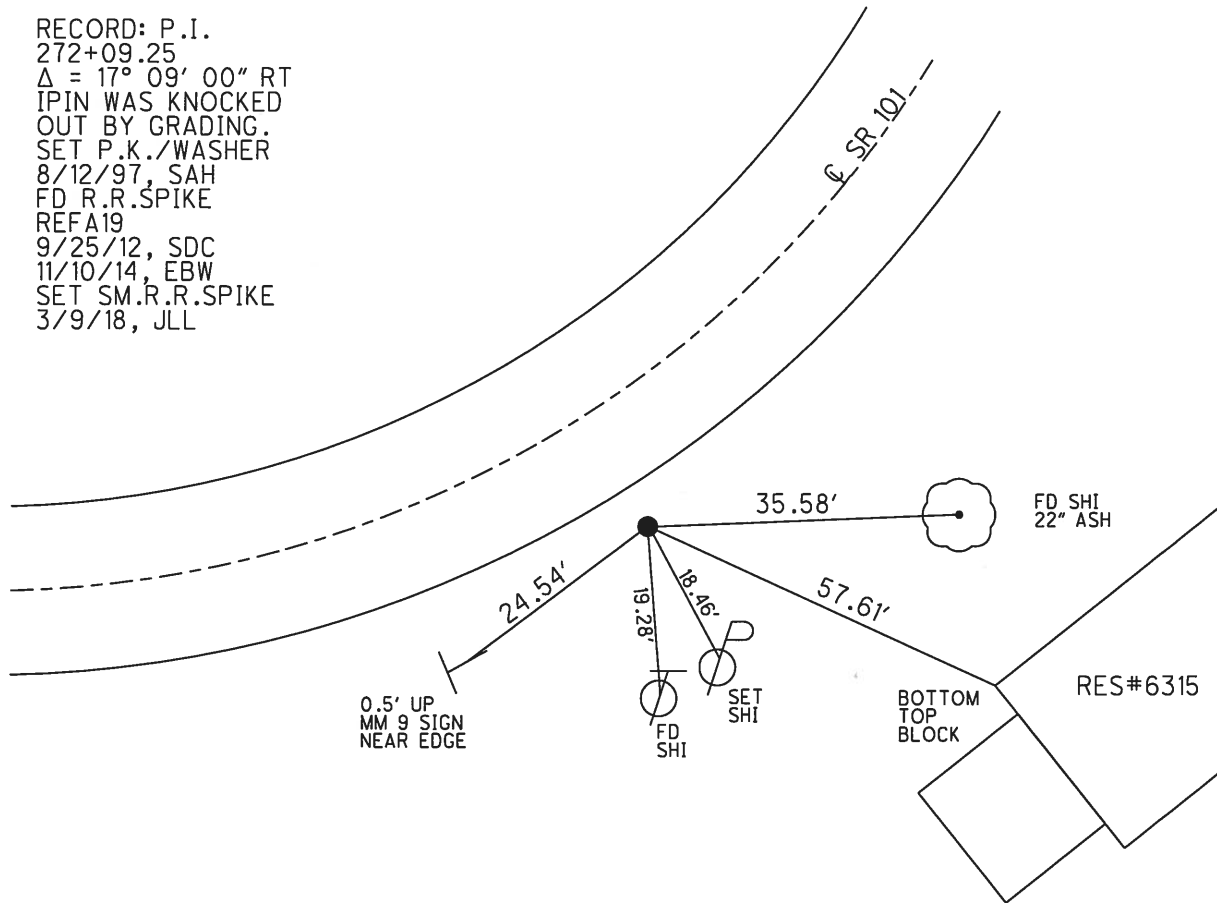
PERSONNEL \_\_\_\_\_ REFERENCE NO. 19 A SHEET 1 OF 13  
 NOTES AUBLE DATE 3/9/18 ROUTE SR 101  
 H.C. LEU WEATHER WIND COUNTY SANDUSKY  
 R.C. AUBLE TEMP. 30° TOWNSHIP TOWNSEND  
 SECTION 34  
 T 5 N R 17 E

TYPE MONUMENT R.R.SPIKE  
~~ON SURFACE~~ - BELOW 2"  
~~LEFT~~ - C PAV'T - RIGHT 15'  
5.8' TO RT EDGE PAVEMENT  
 S.L.M. 476+98.88



GRID: NORTHING: 612882.167 EASTING: 1861807.433

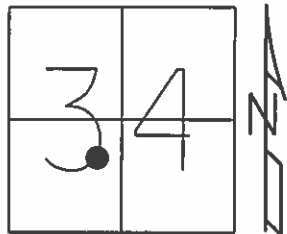
RECORD: P.I.  
 272+09.25  
 $\Delta = 17^\circ 09' 00''$  RT  
 IPIN WAS KNOCKED  
 OUT BY GRADING.  
 SET P.K./WASHER  
 8/12/97, SAH  
 FD R.R.SPIKE  
 REFA19  
 9/25/12, SDC  
 11/10/14, EBW  
 SET SM.R.R.SPIKE  
 3/9/18, JLL



O.D.O.T. DISTRICT 2 SURVEY OFFICE (USE ONLY)

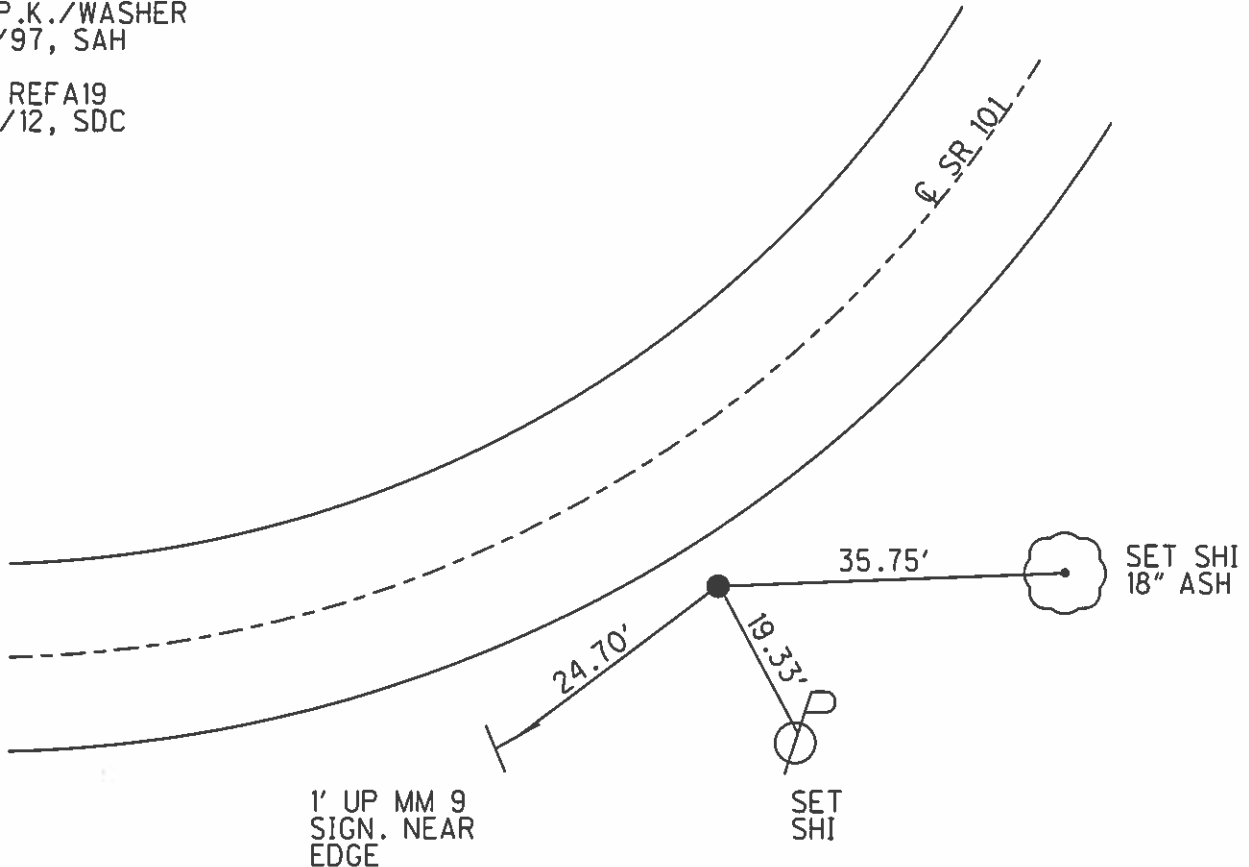
PERSONNEL	REFERENCE NO. <u>19 A</u>	SHEET <u>1</u> OF <u>13</u>
NOTES <u>RHOADES</u>	DATE <u>9/25/12</u>	ROUTE <u>SR 101</u>
H.C. <u>CODER</u>	WEATHER <u>CLDY. FAIR</u>	COUNTY <u>SANDUSKY</u>
R.C. <u>RHOADES</u>	TEMP. <u>66°</u>	TOWNSHIP <u>TOWNSEND</u>
		SECTION <u>34</u>
		T <u>5</u> N R <u>17</u> E

TYPE MONUMENT R.R.SPIKE  
~~ON SURFACE~~ - BELOW 0.1'  
~~LEFT~~ - Q PAV'T - RIGHT 15.1'  
5.8' TO RT EDGE PAVEMENT  
 S.L.M. 477+49



Grid: Northing: 612882.206 Easting: 1861807.421

RECORD: P.I.  
 272+09.25  
 $\Delta = 17^\circ 09' 00''$  RT  
 IPIN WAS KNOCKED  
 OUT BY GRADING.  
 SET P.K./WASHER  
 8/12/97, SAH  
 GPS, REFA19  
 9/25/12, SDC



# O.D.O.T. DISTRICT 2 SURVEY OFFICE

PERSONNEL \_\_\_\_\_

REFERENCE NO. \_\_\_\_\_

SHEET 26 OF 37

NOTES Huss

H.C. Van Dusen

R.C. Moser

DATE 8-4-97

WEATHER Cldy - Fair

TEMP. +80°F

ROUTE SR-101

COUNTY Sandusky

TOWNSHIP Townsend

SECTION 34

T 5 N R 17 E

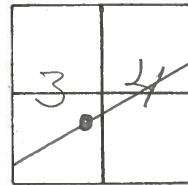
TYPE MONUMENT RR Spike

~~ON SURFACE~~ BELOW 4.00

~~LEFT OF POINT~~ RIGHT 14.8 ft

5.8 ft TO RT EDGE PAVEMENT

S.L.M. 147 580 SLK



19A

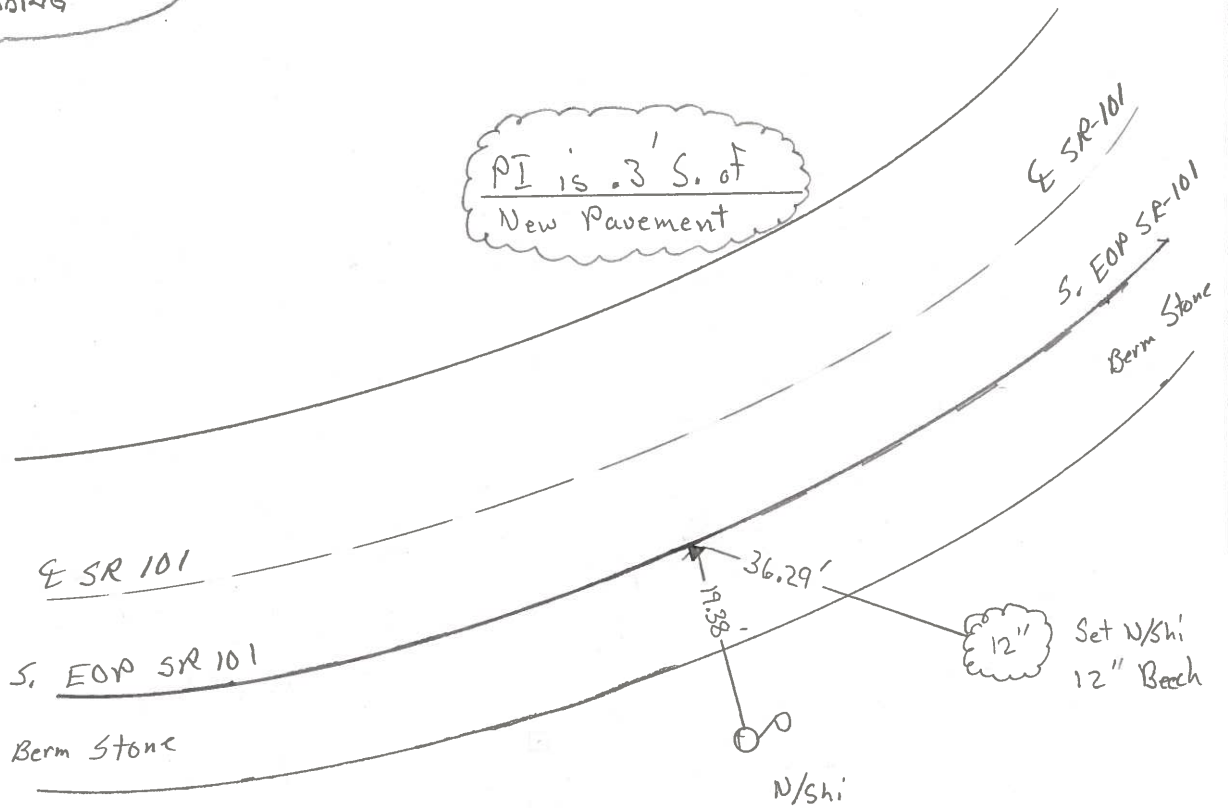
Records: 272+09.25

P.I.  $\Delta = 17^{\circ} 09' 00''$  Rt

I. Rod WAS KNOCKED  
out BY GRADING

Set PKW  
8-12-97 SAH

PI is .3' S. of  
New Pavement



# O.D.O.T. DISTRICT 2 SURVEY OFFICE

PERSONNEL \_\_\_\_\_

REFERENCE NO. \_\_\_\_\_

SHEET 20 OF \_\_\_\_\_

NOTES Cronin

H.C. Ripple

R.C. Garbour

DATE 10/28/87

WEATHER sunny

TEMP. 52°

ROUTE #101

COUNTY Sandusky

TOWNSHIP Townsend

SECTION 34

T 5 N R 17 E

TYPE MONUMENT R.R. spike

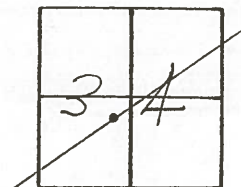
ON SURFACE - BELOW on surface

LEFT- & PAV'T. - RIGHT 15 ft. & Pav't.

TO \_\_\_\_\_ EDGE PAVEMENT

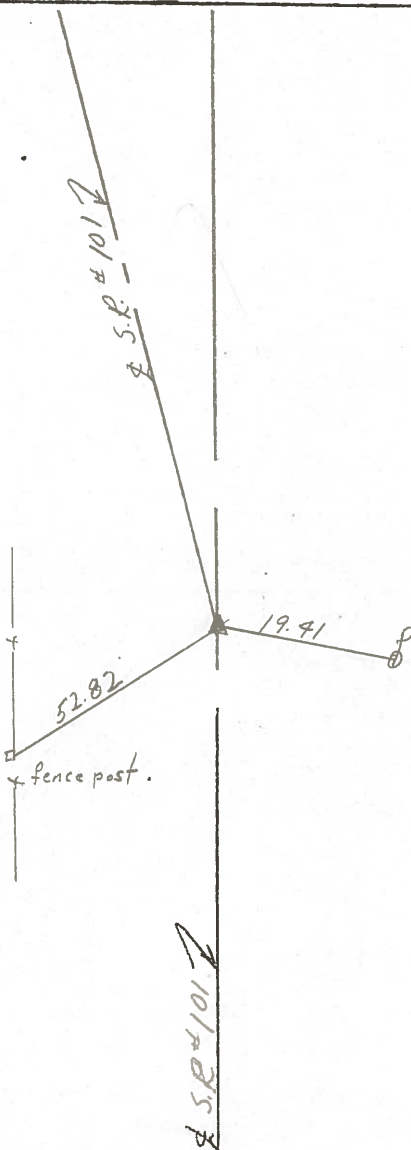
S.L.M. old Sta. 272+09.25

19A



P.I. A = 17°09'00" Lt.

I. Rod knocked out  
by linear grading



PERSONNEL TITLE PERSONNEL TITLE

Cronin  
 Ripple  
 Geymen

COUNTY Sandusky

DATE 3/14/77

S. R. # 101

WEATHER overcast

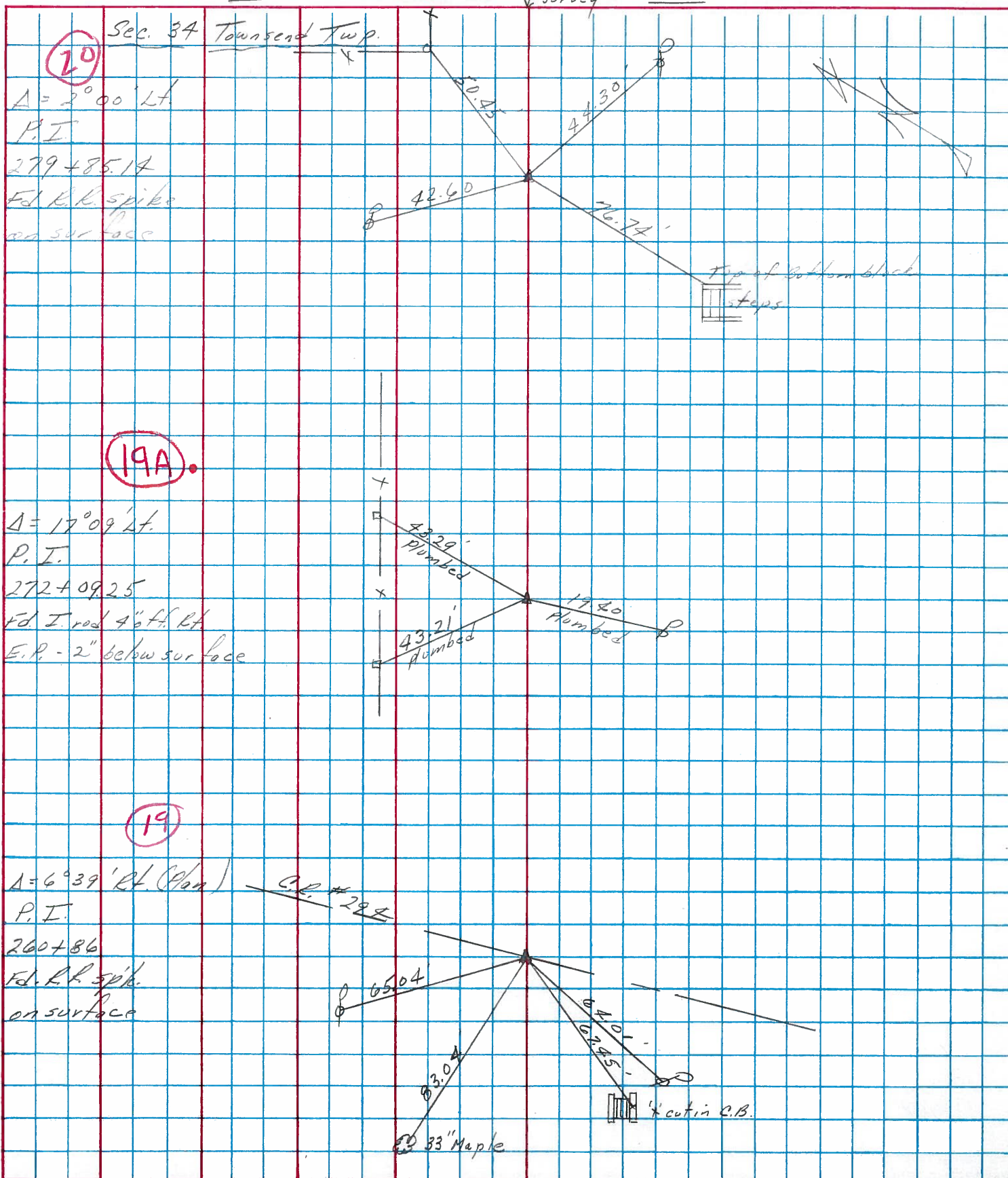
Clyde N.E. to County Line

SEC. San. 101-(3.88-11.90)

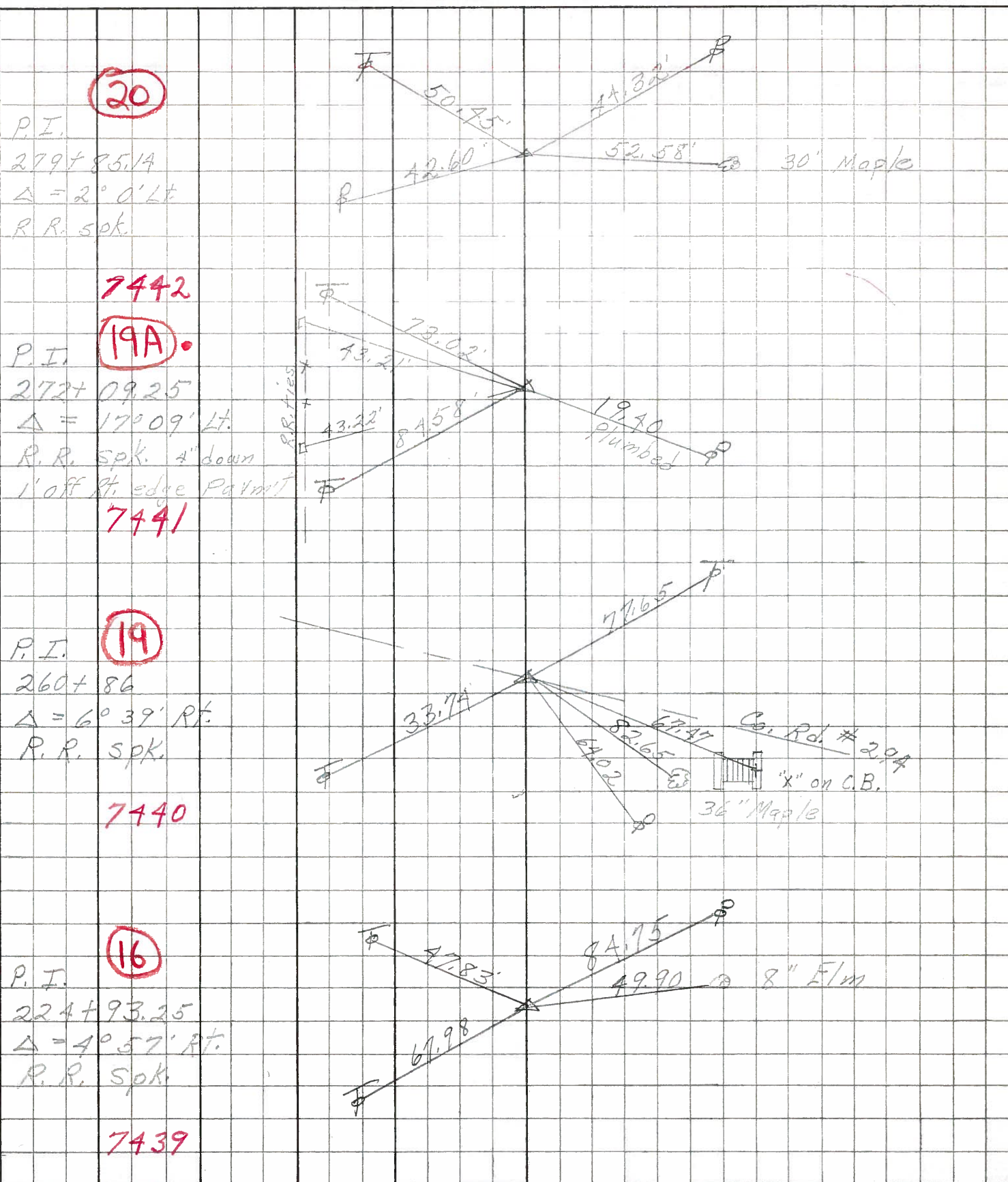
TEMP. 48°

DESCRIPTION Ties for Control Points

JOB NO.



PERSONNEL	TITLE	PERSONNEL	TITLE	COUNTY	DATE
Schneider		Potts		Sandusky	
Mosser	tape			S. R. 101	WEATHER
Barbour				SEC. N.E. of Clyde	TEMP.
Redding					
DESCRIPTION	Ties for Control Points				JOB NO.
	LEFT	CENTER LINE	RIGHT		



20

P.I.  
279+85.14  
 $\Delta = 2^\circ 0' Lt$   
R.R. spk.

7442

19A

P.I.  
272+09.25  
 $\Delta = 17^\circ 09' Lt$   
R.R. spk. 4" down  
1' off Rt. edge Platmt

7441

19

P.I.  
260+86  
 $\Delta = 6^\circ 39' Rt$   
R.R. spk.

7440

16

P.I.  
224+93.25  
 $\Delta = 4^\circ 57' Rt$   
R.R. spk.

7439

PERSONNEL TITLE PERSONNEL TITLE

KrabiLL  
Kowaleski  
Geyman  
Bruggeman

COUNTY Sandusky DATE Feb. 5-1964

S. R. # 101 WEATHER

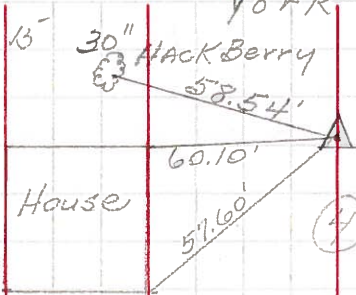
SEC. TEMP.

DESCRIPTION From U.S. 20 North to Fries Cr. Line JOB NO.

LEFT CENTER LINE RIGHT

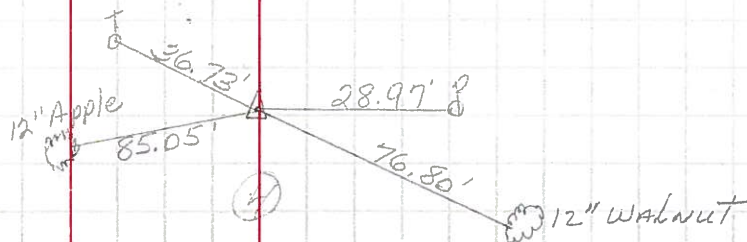
Sta. 198+04.6  
Δ = 3° 39' Lt.  
R.R. Spike 2-5-64

15B



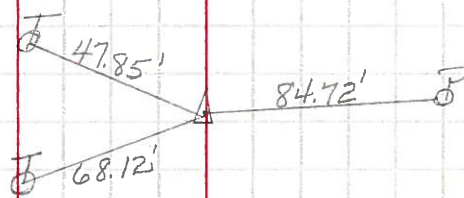
Sta. 205+96.2  
Δ = 1° 13' Lt.  
R.R. Spike 2-5-64

15C



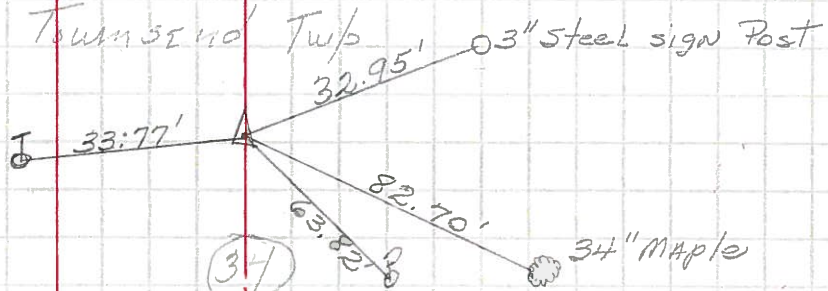
Sta. 224+93.25  
Δ = 4° 57' Rt.  
R.R. Spike 2-5-64

16



Sta. 260+86  
Δ = 6° 39' Rt.  
R.R. Spike 2-5-64

19



Sta. 272+09.25  
Δ = 17° 09' Lt.  
Iron Pin off Pavement  
2-5-64

19A

