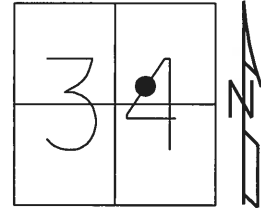


O.D.O.T. DISTRICT 2 SURVEY OFFICE (USE ONLY)

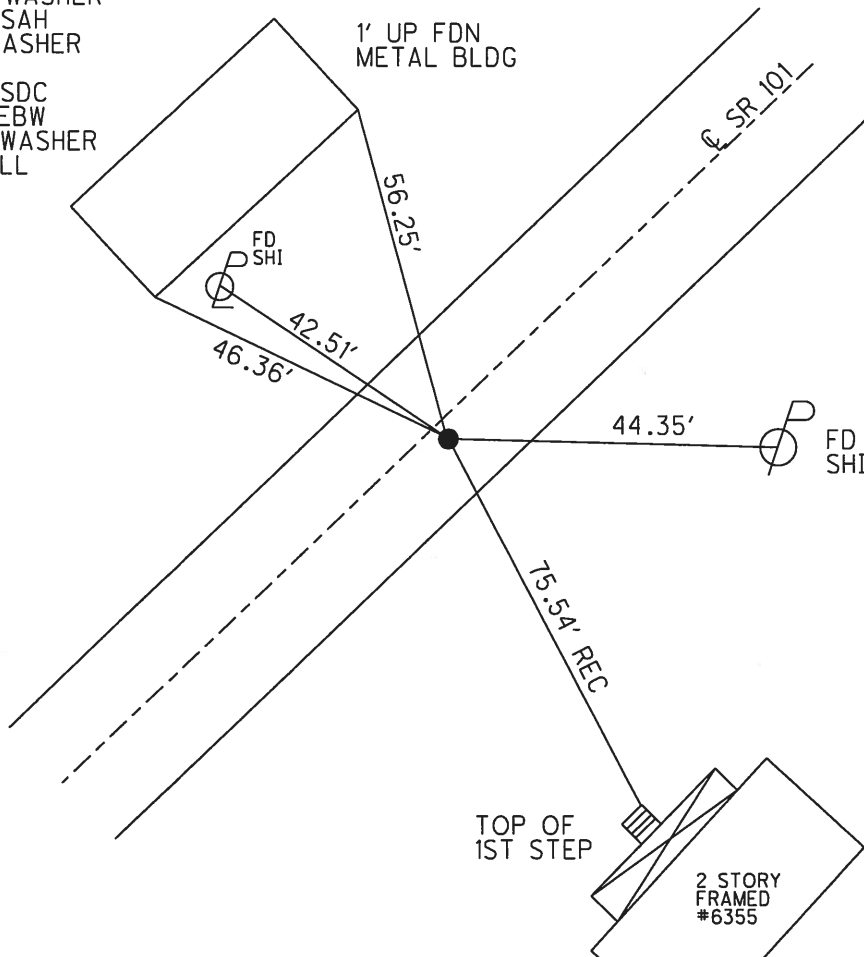
PERSONNEL	REFERENCE NO.	20	SHEET	2	OF	13
NOTES	AUBLE	DATE	3/4/18	ROUTE	SR 101	
H.C.	LEU	WEATHER	SNOW, WIND	COUNTY	SANDUSKY	
R.C.	AUBLE	TEMP.	31°	TOWNSHIP	TOWNSEND	
				SECTION	34	
				T	5	N
				R	17	E

TYPE MONUMENT P.K./WASHER
 ON SURFACE - ~~BELOW~~ ON
~~LEFT~~ - Q PAV'T - RIGHT 2.9'
6.6' TO RT EDGE PAVEMENT
 S.L.M. 484+76.76



GRID: NORTHING: 613408.758 EASTING: 1862377.257

RECORD: P.I.
 279+85.14
 $\Delta = 02^\circ 00' 00''$ LT
 R.R. SPIKE BELOW
 SET P.K./WASHER
 7/31/97, SAH
 FD MAG/WASHER
 REF20
 9/25/12, SDC
 11/10/14, EBW
 SET MAG/WASHER
 3/9/18, JLL



O.D.O.T. DISTRICT 2 SURVEY OFFICE (USE ONLY)

PERSONNEL

REFERENCE NO. 20

SHEET 2 OF 13

NOTES RHOADES

DATE 9/25/12

ROUTE SR 101

H.C. CODER

WEATHER CLDY. FAIR

COUNTY SANDUSKY

R.C. RHOADES

TEMP. 66°

TOWNSHIP TOWNSEND

SECTION 34

T. 5 N R. 17 E

TYPE MONUMENT MAG / WASHER

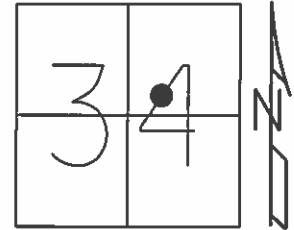
ON SURFACE - ~~BELOW~~ ON

~~LEFT~~ - C PAV'T - RIGHT 3.4'

6.6' TO RT EDGE PAVEMENT

S.L.M. 485+21

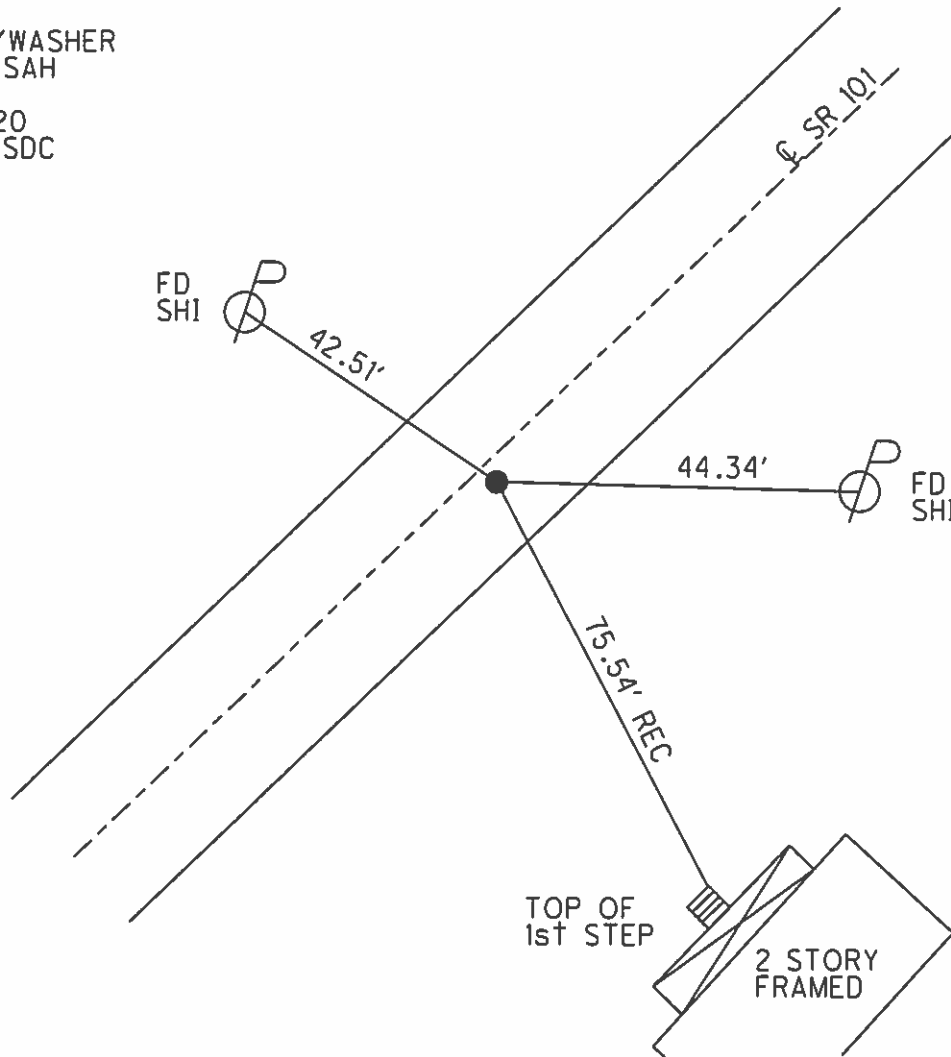
Grid: Northing: 613408.912 Easting: 1862377.199



RECORD: P.I.
279+85.14
 $\Delta = 02^{\circ} 00' 00''$ LT
R.R.SPIKE BELOW

SET P.K./WASHER
7/31/97, SAH

GPS, REF20
9/25/12, SDC



O.D.O.T. DISTRICT 2 SURVEY OFFICE

PERSONNEL _____

REFERENCE NO. 20

SHEET 27 OF 37

NOTES Huss

H.C. VanNunen

R.C. Moser

DATE 8-4-97

WEATHER Clody-Fair

TEMP. +80°F

ROUTE SR-101

COUNTY Sandusky

TOWNSHIP Townsend

SECTION _____

T 5 N R 17 E

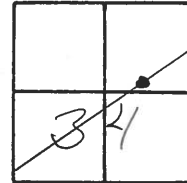
TYPE MONUMENT P.K./WASHER

ON SURFACE - ~~BELOW~~ yes

~~LEFT & PAINT~~ - RIGHT 3.1 Rt

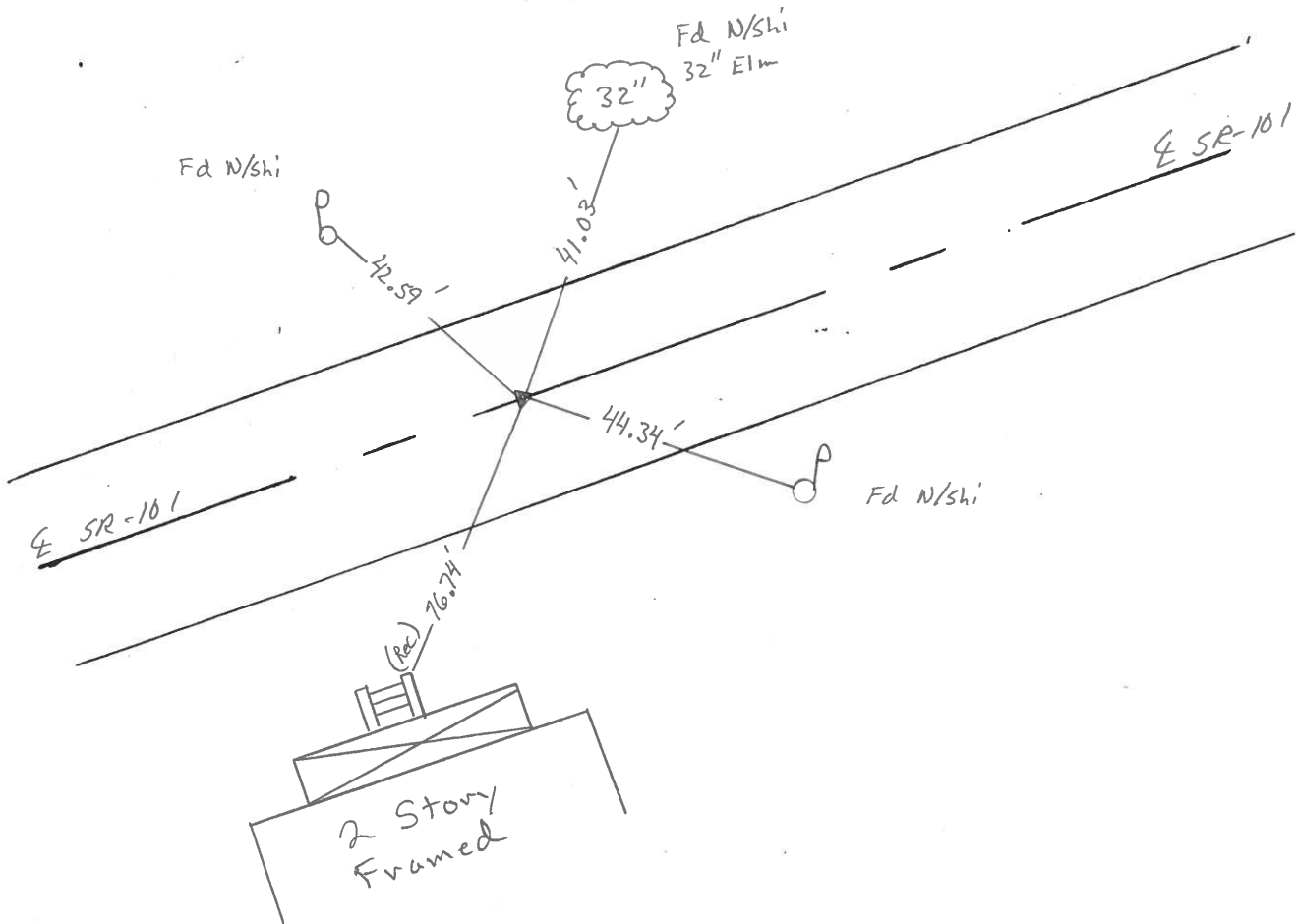
6.6 TO Rt EDGE PAVEMENT

S.L.M. 147816.6 SLK



Records: 279+85.14
 P.I. Δ = 02°-00'-00" Lt.
 R.R. SPIKE Below

Set PK/W
 7-31-97



O.D.O.T. DISTRICT 2 SURVEY OFFICE

PERSONNEL _____

REFERENCE NO. 20 SHEET 21 OF _____

NOTES Cronin

H.C. Ripple

R.C. Barbour

DATE 10/28/87

WEATHER sunny

TEMP. 52°

ROUTE # 101

COUNTY Sandusky

TOWNSHIP Townsend

SECTION _____

T 5 N R 17 E

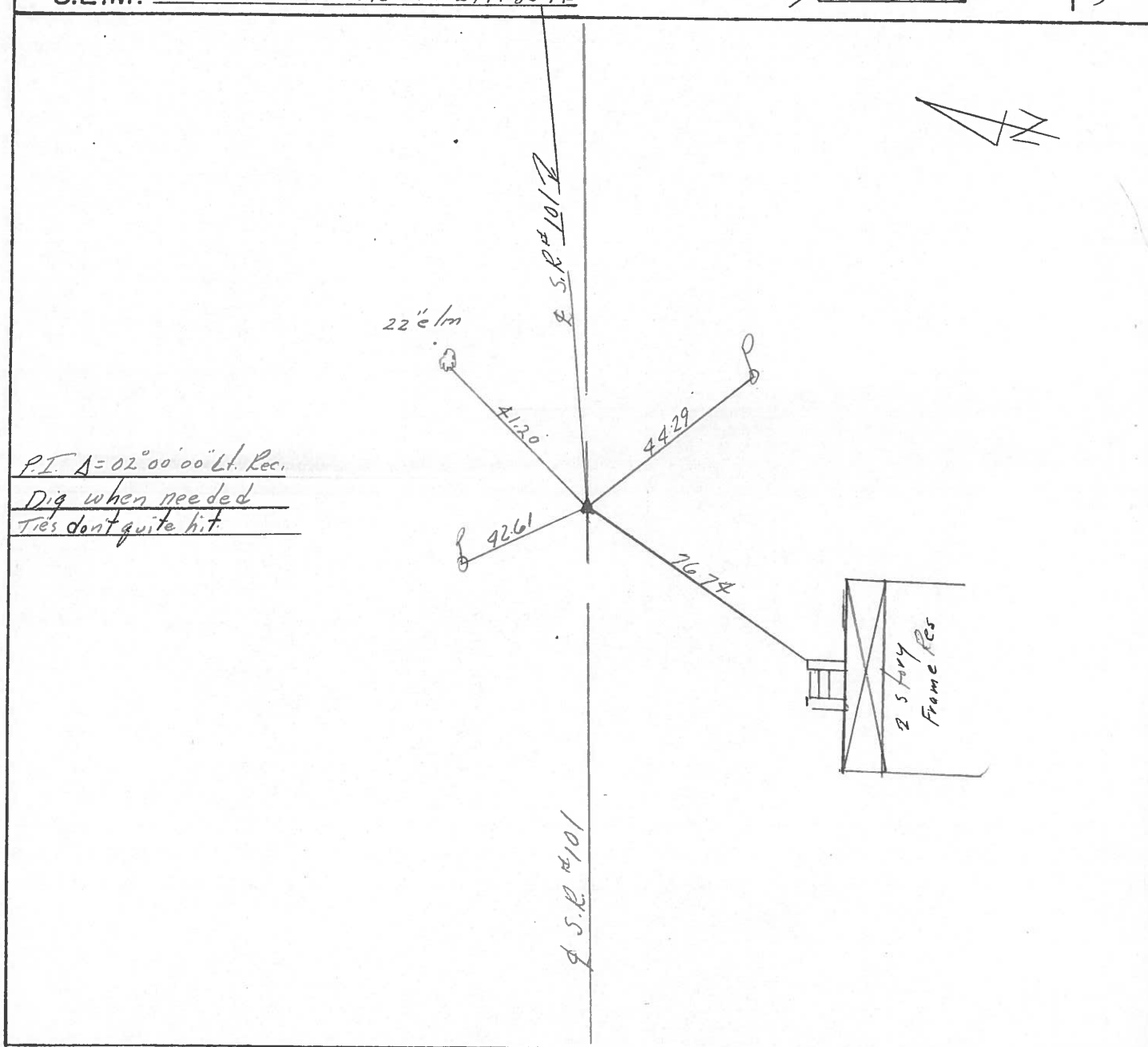
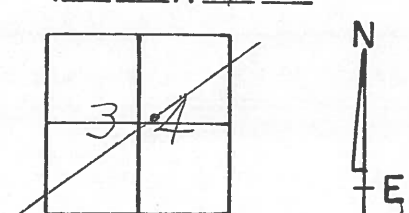
TYPE MONUMENT P.R. washer atop R.R. sph.

ON SURFACE - BELOW below surface

LEFT - & PAV'T. - RIGHT 3' Rt. & Pav't.

_____ TO _____ EDGE PAVEMENT

S.L.M. old Sta. 279+85.14



PERSONNEL TITLE PERSONNEL TITLE

Cronin

Pipple

Geymen

COUNTY Sandusky

DATE 3/14/77

S. R. #101

WEATHER overcast

Allyde N.E. to County Line

SEC. San. 101-(3.88-11.90)

TEMP. 48°

DESCRIPTION Ties for Control Points

JOB NO.

LEFT

CENTER LINE

RIGHT

70

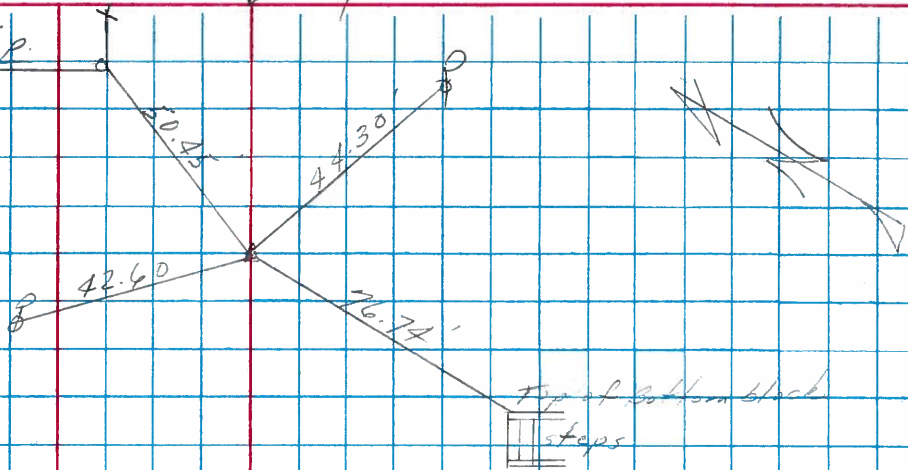
Sec. 34 Townsend Twp.

A = 2°00' Lt.

P.I.

279+85.14

Fd. R.R. spike on surface



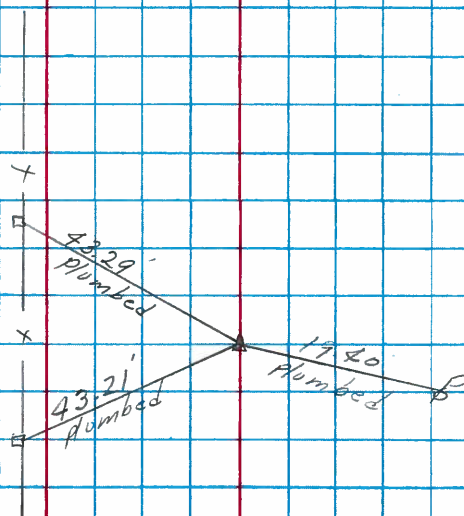
19A

A = 17°09' Lt.

P.I.

272+09.25

Fd. I. rod 4" off Lt. E.P. - 2" below surface



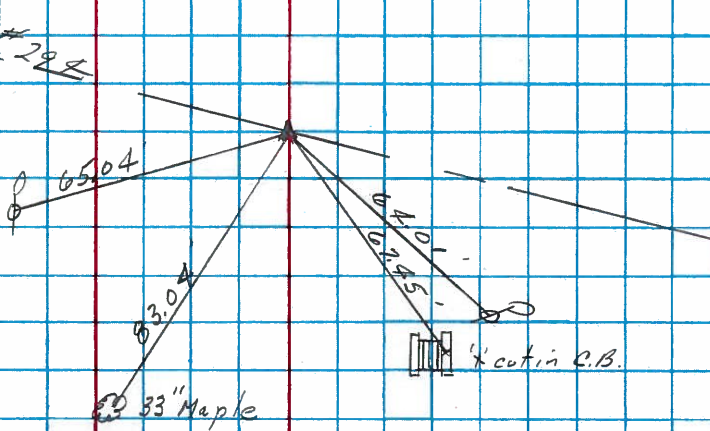
19

A = 6°39' Rt. (Plan)

P.I.

260+86

Fd. R.R. spike on surface



PERSONNEL TITLE PERSONNEL TITLE
 Schneider _____ Potts _____
 Mosser tape _____
 Barbour _____
 Redding _____

COUNTY Sandusky DATE _____
 S. R. 101 WEATHER _____
 SEC. N.E. of Clyde TEMP. _____

DESCRIPTION Ties for Control Points JOB NO. _____

LEFT	CENTER LINE	RIGHT
<p>20</p> <p>P.I. 279+85.14 $\Delta = 2^{\circ} 0' Lt$ R.R. Spk.</p>		<p>30" Maple</p>
<p>7442</p> <p>19A</p> <p>P.I. 272+09.25 $\Delta = 17^{\circ} 09' Lt$ R.R. Spk. 4" down 1' off Rt. edge Pavm.</p>		<p>Plumbed</p>
<p>7441</p> <p>19</p> <p>P.I. 260+86 $\Delta = 6^{\circ} 39' Rt$ R.R. Spk.</p>		<p>Co. Rd. # 294 "x" on C.B. 36" Maple</p>
<p>7440</p> <p>16</p> <p>P.I. 224+93.25 $\Delta = 4^{\circ} 57' Rt$ R.R. Spk.</p>		<p>8" Elm</p>
<p>7439</p>		

PERSONNEL	TITLE	PERSONNEL	TITLE	COUNTY	DATE	WEATHER
KraBill				Sandusky	Feb. 5, 1964	
Kowaleski				S. R. #101		
Geyman						
Bruggeman				SEC.		TEMP.

DESCRIPTION: From U.S. 20 North to Erie Co. Line JOB NO. _____

