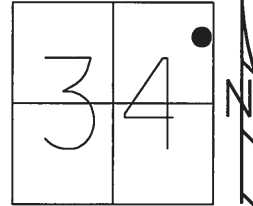


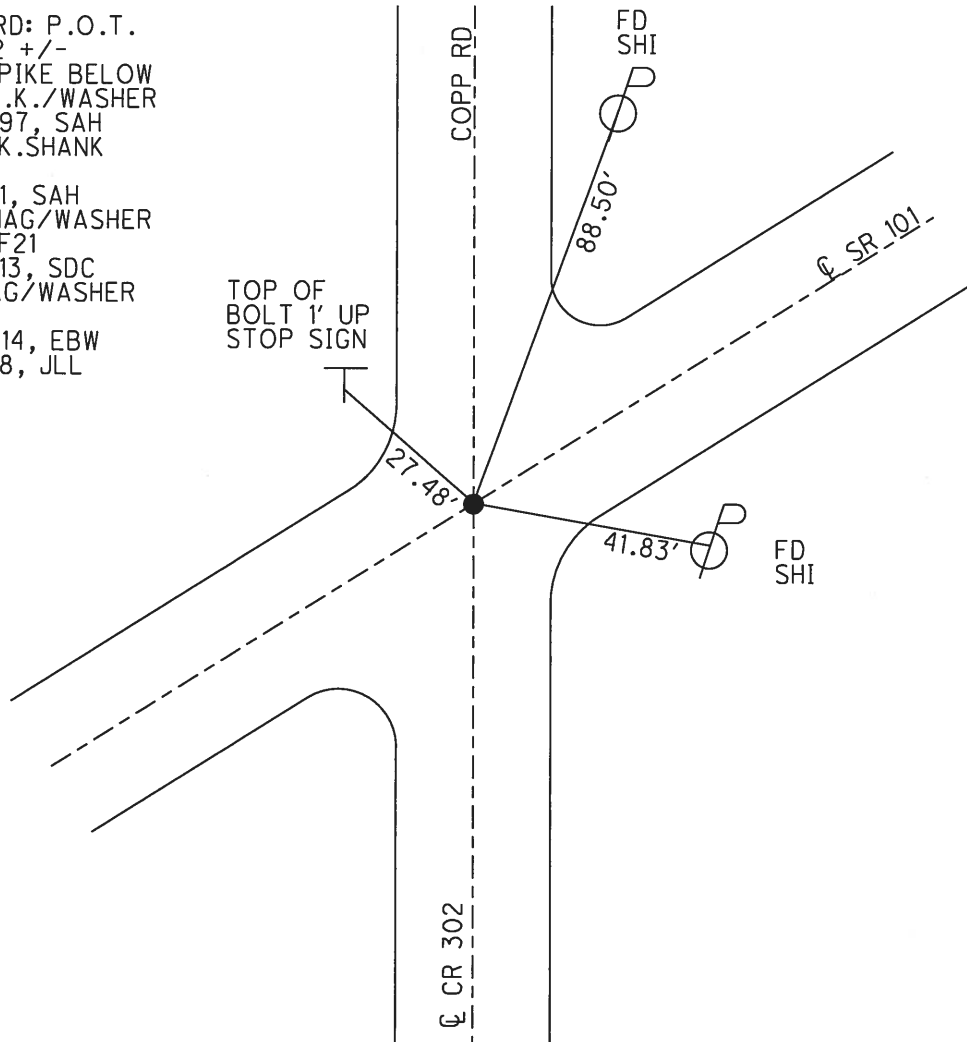
O.D.O.T. DISTRICT 2 SURVEY OFFICE (USE ONLY)

PERSONNEL _____ REFERENCE NO. 21 SHEET 4 OF 13
 NOTES RHOADES DATE 9/25/12 ROUTE SR 101
 H.C. CODER WEATHER CLDY. FAIR COUNTY SANDUSKY
 R.C. RHOADES TEMP. 66° TOWNSHIP TOWNSEND
 SECTION 34
 T 5 N R 17 E

TYPE MONUMENT P.K./WASHER
 ON SURFACE - ~~BELOW~~ ON
 LEFT - ☉ PAV'T - RIGHT ON
- TO - EDGE PAVEMENT
 S.L.M. 516+41.65
 GRID: NORTHING: 615398.621 EASTING: 18664822.819



RECORD: P.O.T.
 311+52 +/-
 R.R.SPIKE BELOW
 SET P.K./WASHER
 8/12/97, SAH
 FD P.K.SHANK
 REF21
 8/4/11, SAH
 SET MAG/WASHER
 FINREF21
 3/21/13, SDC
 FD MAG/WASHER
 REF21
 11/10/14, EBW
 3/9/18, JLL



O.D.O.T. DISTRICT 2 SURVEY OFFICE (USE ONLY)

PERSONNEL

REFERENCE NO. 21

SHEET 4 OF 13

NOTES RHOADES

DATE 9/25/12

ROUTE SR 101

H.C. CODER

WEATHER CLDY. FAIR

COUNTY SANDUSKY

R.C. RHOADES

TEMP. 66°

TOWNSHIP TOWNSEND

SECTION 34

T 5 N R 17 E

TYPE MONUMENT P.K./WASHER

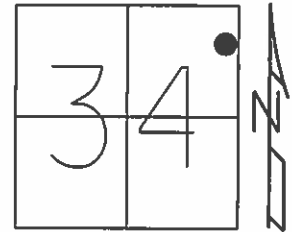
ON SURFACE - ~~BELOW~~ ON

LEFT - Q PAV'T - RIGHT ON

- TO - EDGE PAVEMENT

S.L.M. 516+91.2

Grid: Northing: 615398.605 Easting: 18664822.776

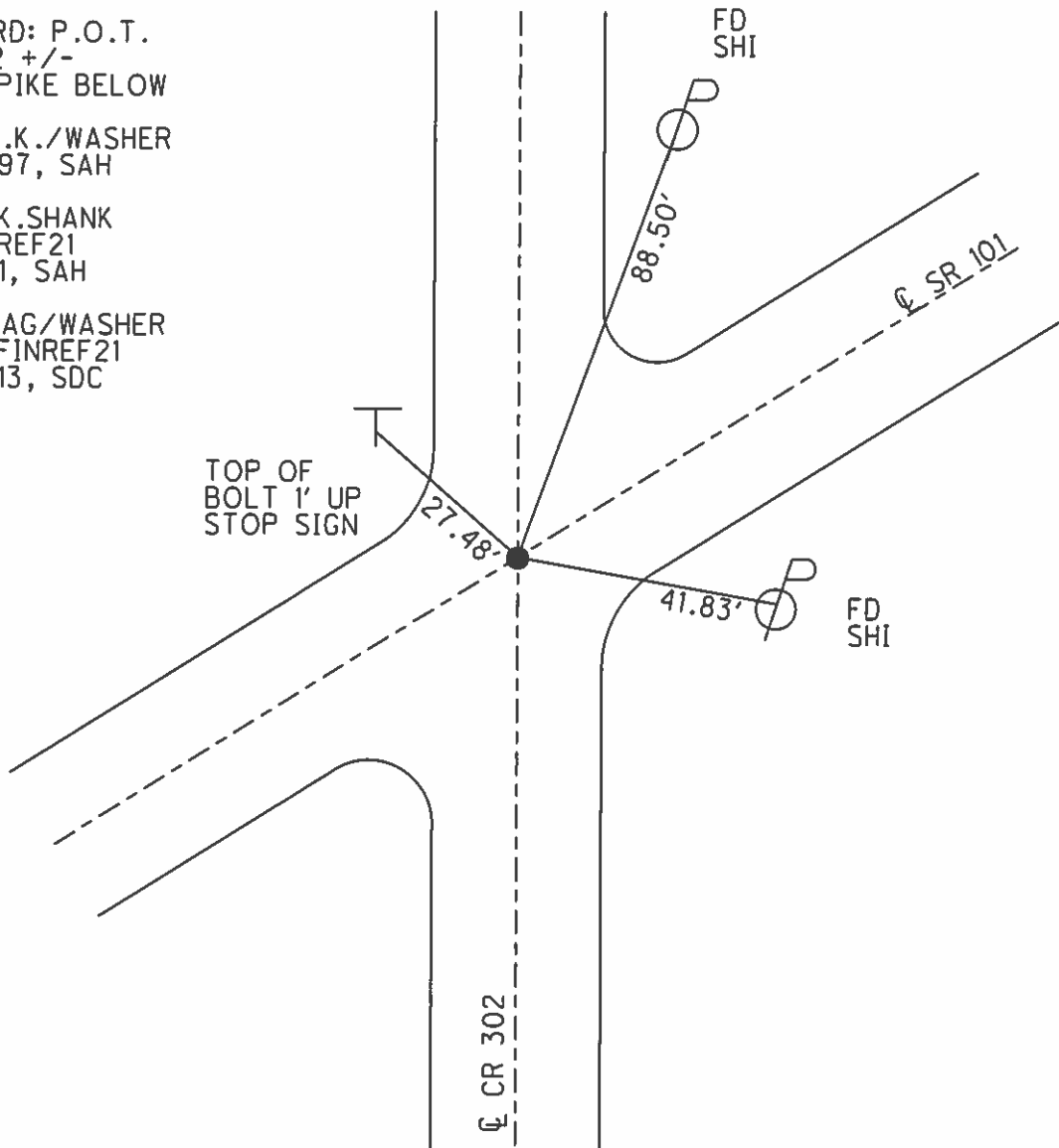


RECORD: P.O.T.
311+52 +/-
R.R.SPIKE BELOW

SET P.K./WASHER
8/12/97, SAH

FD P.K.SHANK
GPS, REF21
8/4/11, SAH

SET MAG/WASHER
GPS, FINREF21
3/21/13, SDC



O.D.O.T. DISTRICT 2 SURVEY OFFICE

PERSONNEL _____

REFERENCE NO. 21

SHEET 29 OF 37

NOTES Huss

H.C. VanNusen

R.C. Moser

DATE 8-4-97

WEATHER Cldy-Fair

TEMP. +80°F

ROUTE SR-101

COUNTY Sandusky

TOWNSHIP Townsend

SECTION 34

T 5 N R 17 E

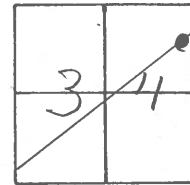
TYPE MONUMENT P.K./WASHER

ON SURFACE - BELOW YES

~~WEST~~ - E ~~PAN'T.~~ - FRONT ♀

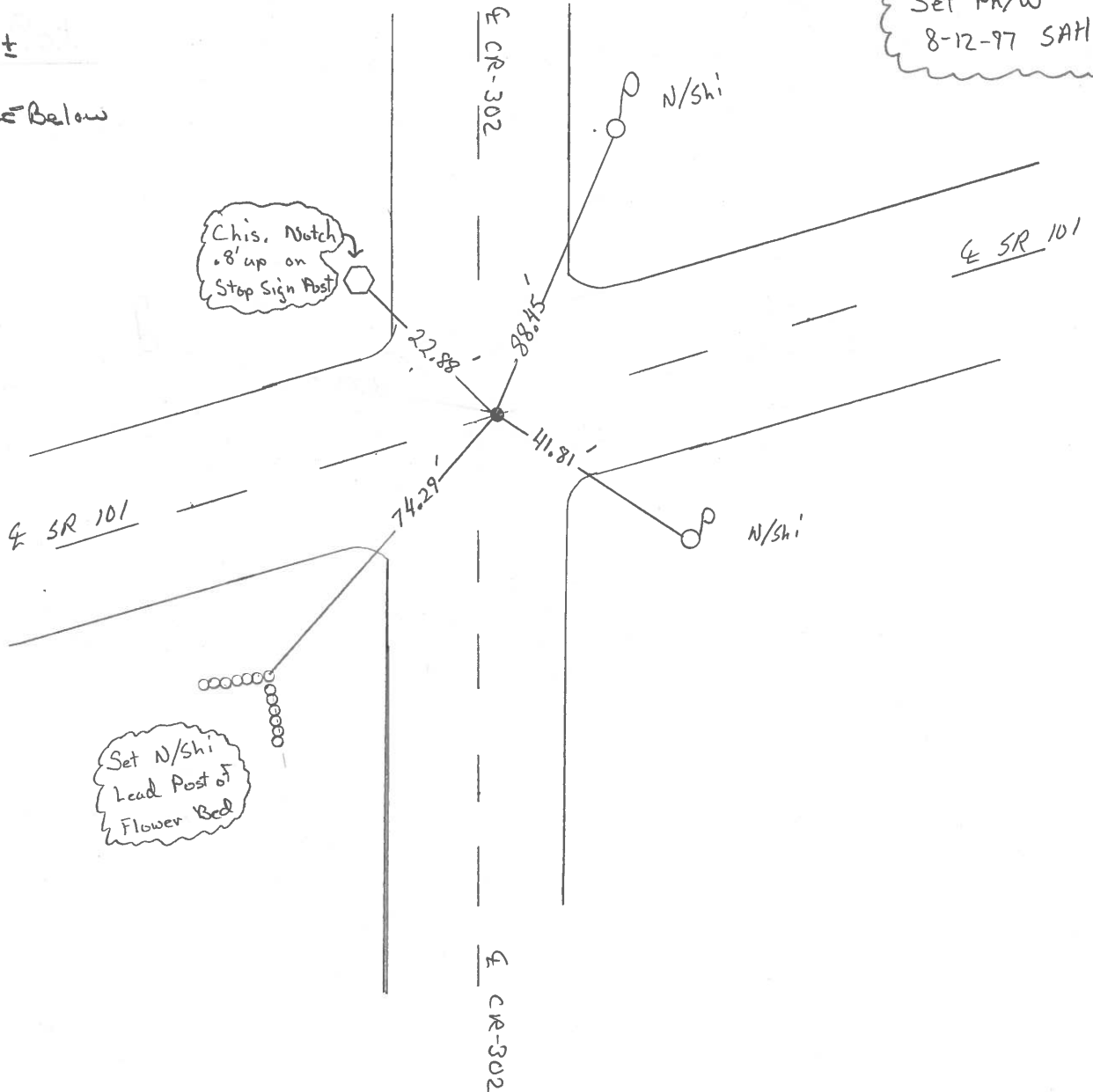
TO EDGE PAVEMENT

S.L.M. 15 + 785.8 SKK



Records:
311 + 52 ±
P.O.T.
R.R. SPICE Below

Set PK/W
8-12-97 SAH



O.D.O.T. DISTRICT 2 SURVEY OFFICE

PERSONNEL _____

REFERENCE NO. 21

SHEET 23 OF _____

NOTES Cronin

H.C. Ripple

R.C. Barbour

DATE 10/28/87

WEATHER sunny

TEMP. 52°

ROUTE #101

COUNTY Sandusky

TOWNSHIP Townsend

SECTION _____

T 5 N R 17 E

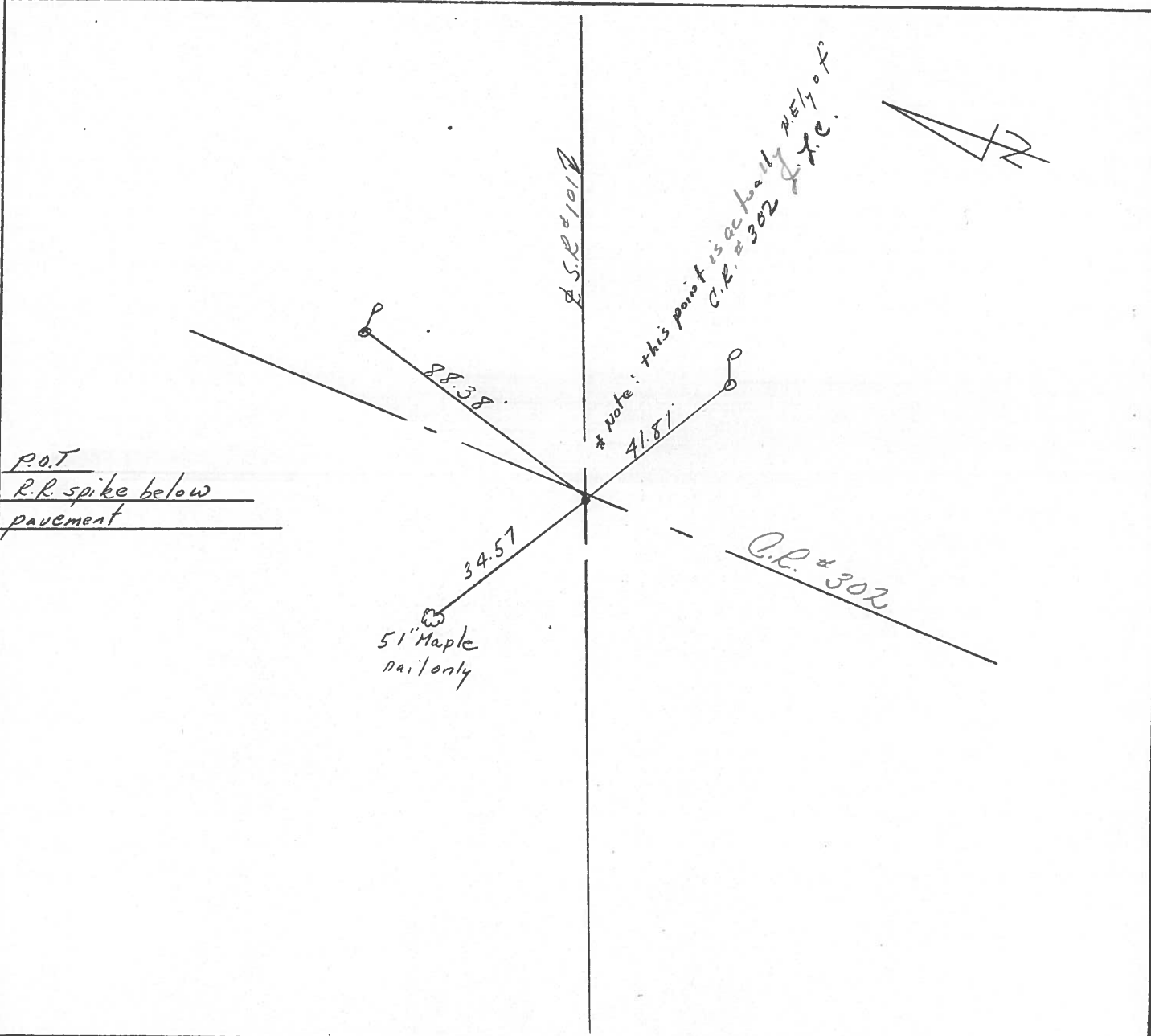
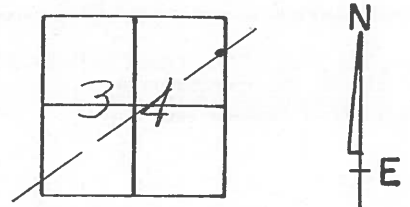
TYPE MONUMENT P.R. & washer

ON SURFACE - BELOW on surface

LEFT - & PAV'T. - RIGHT & Pav't

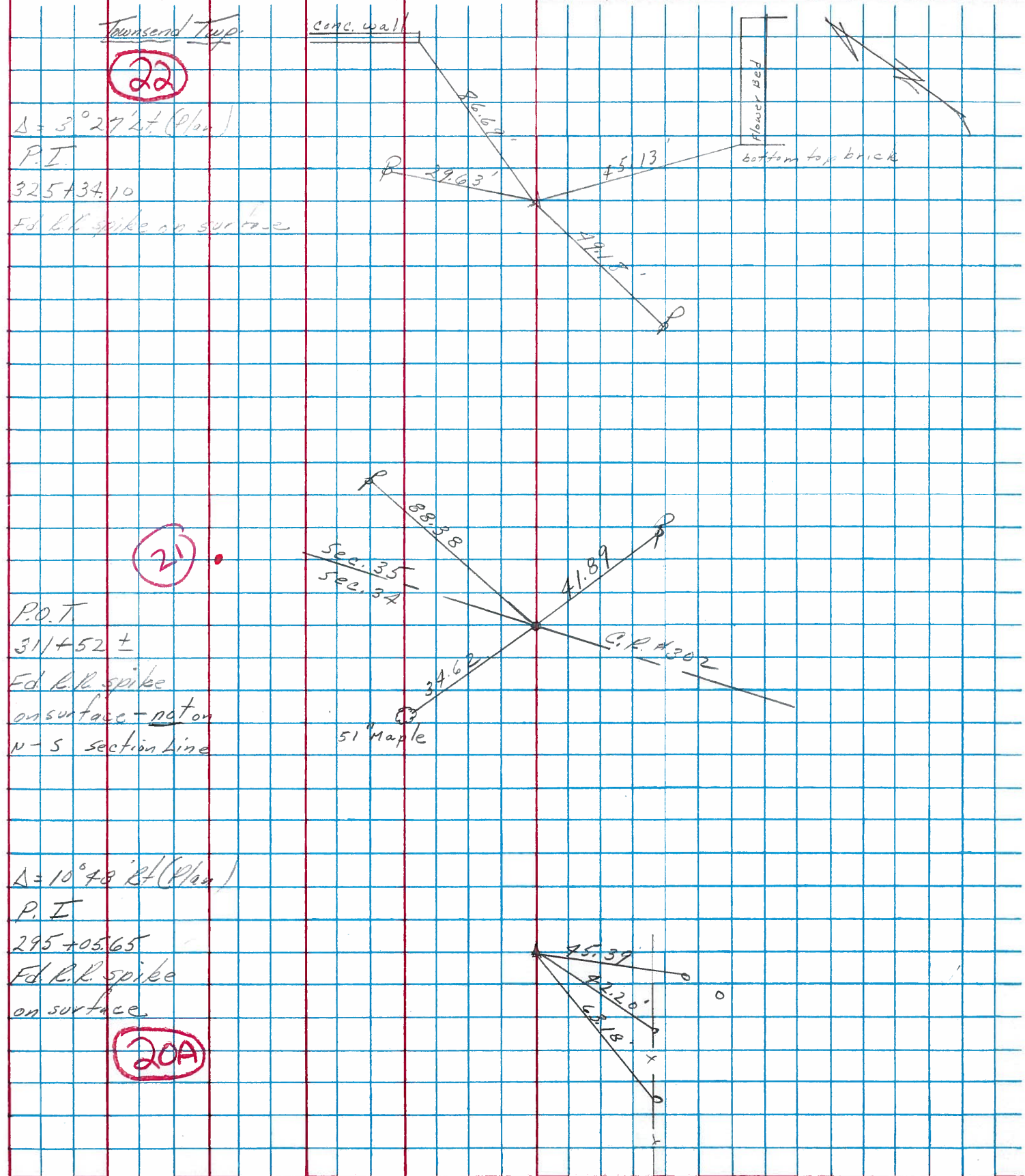
TO _____ EDGE PAVEMENT

S.L.M. _____ old Sta. 311+52±



PERSONNEL	TITLE	PERSONNEL	TITLE	COUNTY	DATE
<u>Cronin</u>				<u>Sandusky</u>	<u>3/14/77</u>
<u>Ripple</u>				S. R. <u>#101</u>	WEATHER <u>overcast</u>
<u>Geyman</u>				SEC. <u>San. 101-(3.88-11.90)</u>	TEMP. <u>50°</u>

DESCRIPTION Ties for Control Points LEFT CENTER LINE Survey RIGHT JOB NO.



PERSONNEL TITLE PERSONNEL TITLE

Schneider
Mosser
Borbour
Redding

COUNTY Sandusky DATE 4-16-68

S. R. 101 WEATHER Fair

SEC. N.E. of Clyde TEMP. 55°

DESCRIPTION

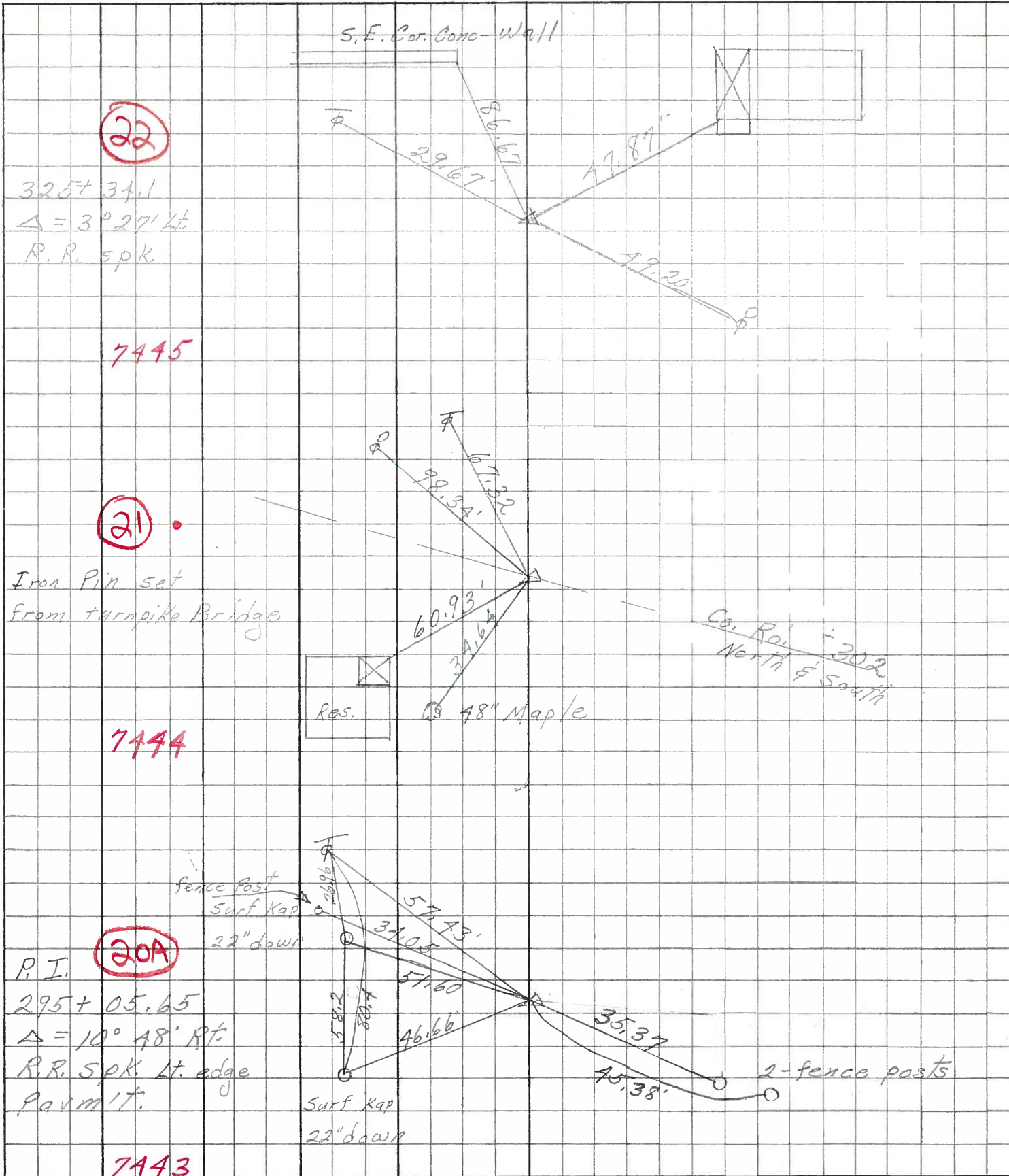
Ties for Control Points

JOB NO.

LEFT

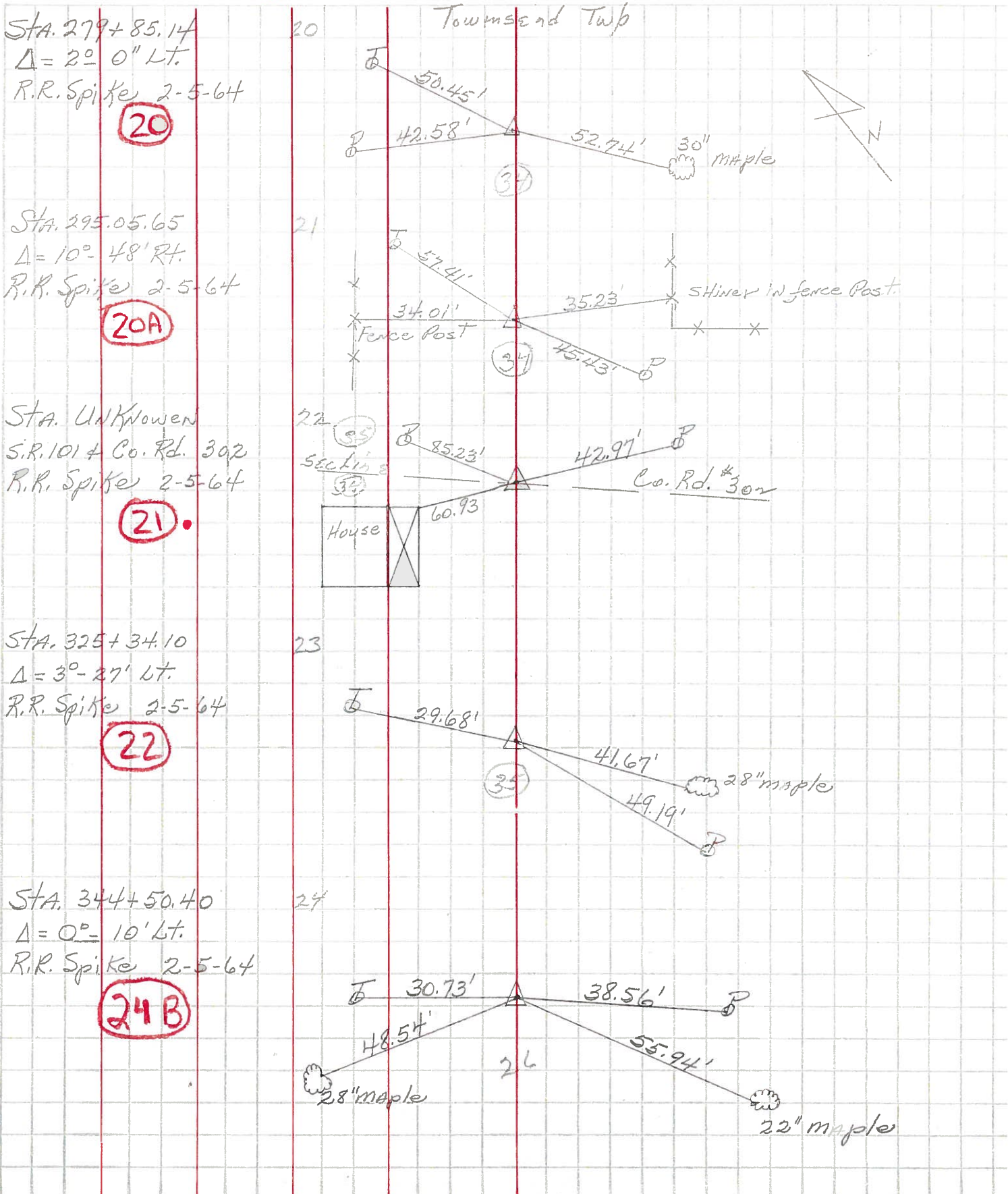
CENTER LINE

RIGHT



PERSONNEL	TITLE	PERSONNEL	TITLE	COUNTY	DATE	WEATHER
Krabill				SANDUSKY	FEB. 5, 1964	
Kowaleski				S. R. #101		
Geyman				SEC.		TEMP.
Bruggeman						

DESCRIPTION From U.S. 20 North to Erie Co. Line JOB NO. _____



STA. 279+85.14
 $\Delta = 2^\circ - 0''$ Lt.
 R.R. Spike 2-5-64
(20)

STA. 295.05.65
 $\Delta = 10^\circ - 48'$ Rt.
 R.R. Spike 2-5-64
(20A)

STA. UNKNOWN
 S.R. 101 + Co. Rd. 302
 R.R. Spike 2-5-64
(21)

STA. 325+34.10
 $\Delta = 3^\circ - 27'$ Lt.
 R.R. Spike 2-5-64
(22)

STA. 344+50.40
 $\Delta = 0^\circ - 10'$ Lt.
 R.R. Spike 2-5-64
(24B)