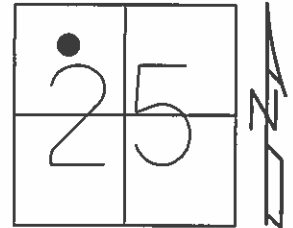


O.D.O.T. DISTRICT 2 SURVEY OFFICE (USE ONLY)

PERSONNEL \_\_\_\_\_ REFERENCE NO. 24 D SHEET 9 OF 13  
 NOTES RHOADES DATE 9/25/12 ROUTE SR 101  
 H.C. CODER WEATHER CLDY. FAIR COUNTY SANDUSKY  
 R.C. RHOADES TEMP. 66° TOWNSHIP TOWNSEND  
 \_\_\_\_\_ SECTION 25  
 \_\_\_\_\_ T 5 N R 17 E

TYPE MONUMENT P.K./WASHER  
 ON SURFACE - ~~BELOW~~ ON  
 LEFT - Q PAV'T - ~~RIGHT~~ 9.0'  
1.0' TO LT EDGE PAVEMENT  
 S.L.M. 596+18.84  
 Grid: Northing: 620164.631 Easting: 1871154.725

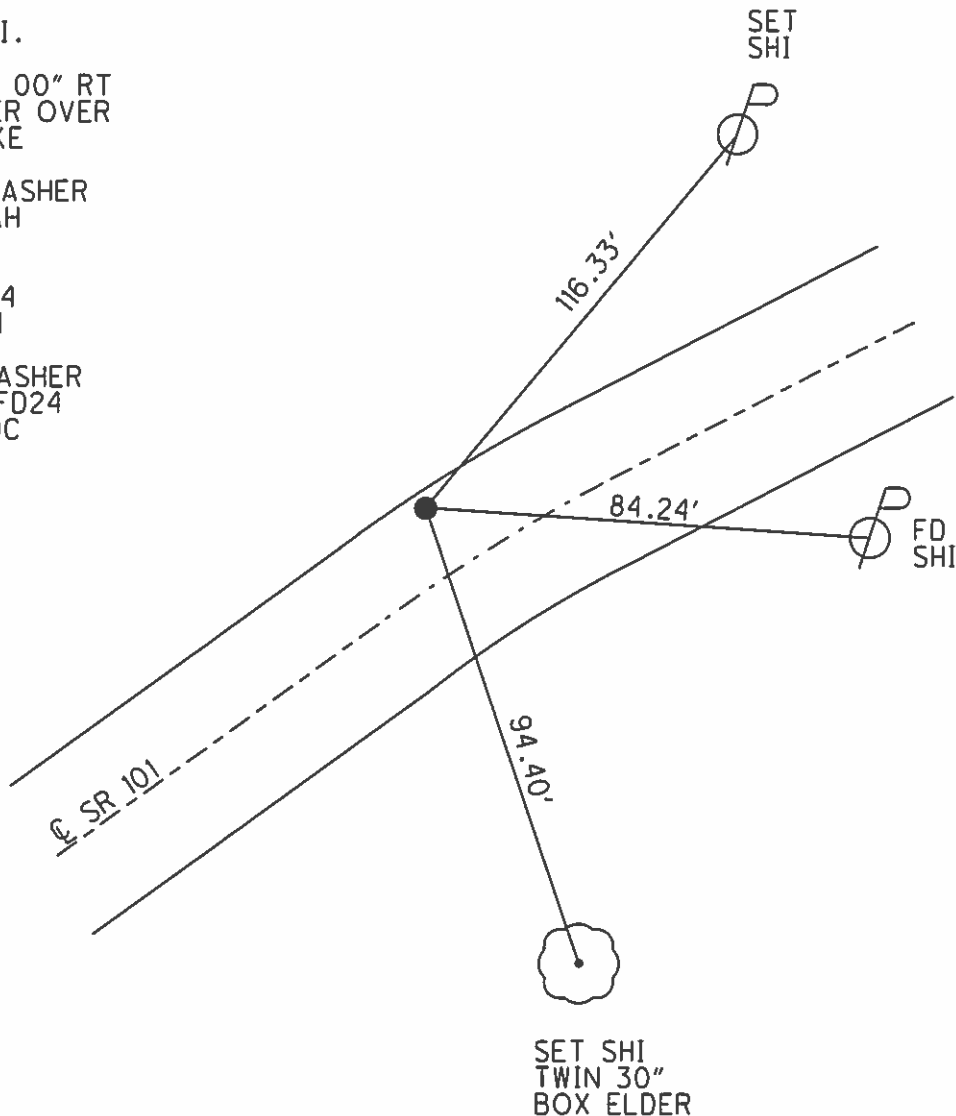


RECORD: P.I.  
 390+81.80  
 $\Delta = 10^\circ 41' 00''$  RT  
 P.K./WASHER OVER  
 LG.R.R.SPIKE

SET P.K./WASHER  
 8/11/97, SAH

FD P.K.  
 GPS, REFD24  
 8/4/11, SAH

SET MAG/WASHER  
 GPS, FINREFD24  
 3/21/13, SDC



# O.D.O.T. DISTRICT 2 SURVEY OFFICE

PERSONNEL \_\_\_\_\_

REFERENCE NO. \_\_\_\_\_

SHEET 34 OF 37

NOTES Huss

H.C. Van Dusen

R.C. Moser

DATE 8-4-97

WEATHER Cldy - Fair

TEMP. +80°F

ROUTE SR-101

COUNTY Sandusky

TOWNSHIP Townsend

SECTION 25

T 5 N R 17 E

TYPE MONUMENT P.K. & WASHER

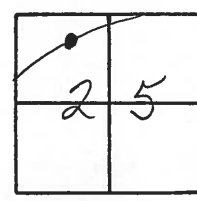
~~ON SURFACE~~ - ~~BELOW~~ yes

~~LEFT~~ - ~~PAV'T.~~ RIGHT 8.6 Lt

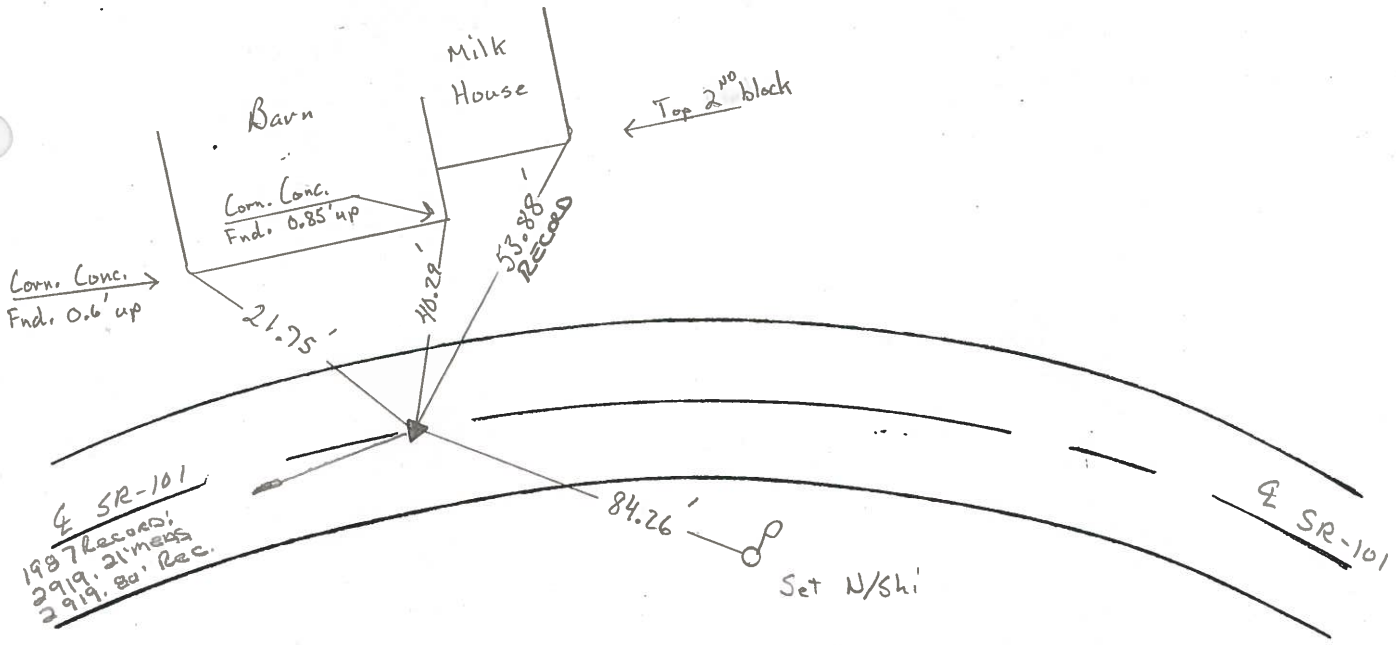
1' TO Lt EDGE PAVEMENT

S.L.M. 18 + 211.6 SLK

240



Set PK/W  
8-11-97 SAH



PI Δ = 10° 41' 00" Rt.  
PK/W over  
large RR-spike  
390 + 81.80  
Record

# O.D.O.T. DISTRICT 2 SURVEY OFFICE

PERSONNEL \_\_\_\_\_

REFERENCE NO. \_\_\_\_\_

SHEET 27 OF \_\_\_\_\_

NOTES Cronin

H.C. Ripple

R.C. Barbour

DATE 10/29/87

WEATHER sunny

TEMP. 50°

ROUTE #101

COUNTY Sandusky

TOWNSHIP Townsend

SECTION \_\_\_\_\_

T 5 N R 17 E

TYPE MONUMENT P.K. washer

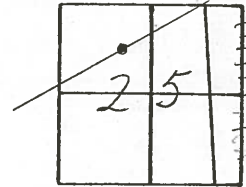
ON SURFACE - BELOW on surface

LEFT - CL PAV'T. - RIGHT 9' Lt. & Pav't.

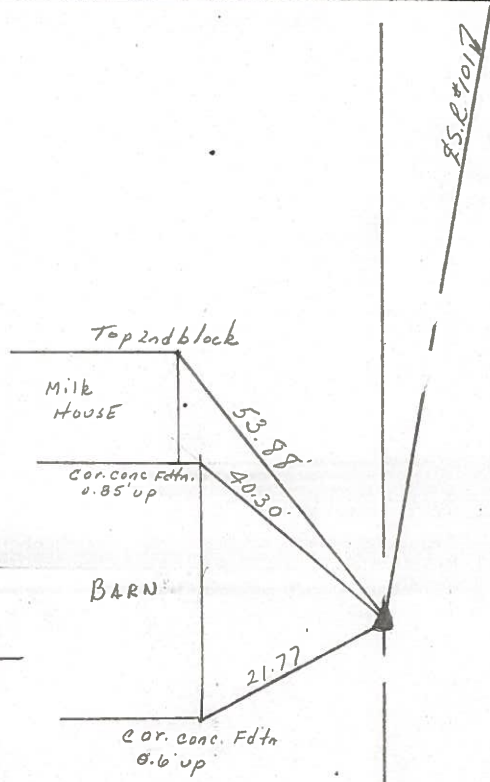
TO \_\_\_\_\_ EDGE PAVEMENT

S.L.M. old Sta. 390+81.80

240



P.I. A: 10°41'00" Rt. Rec.  
P.K. washer & R.R.  
spike below surface

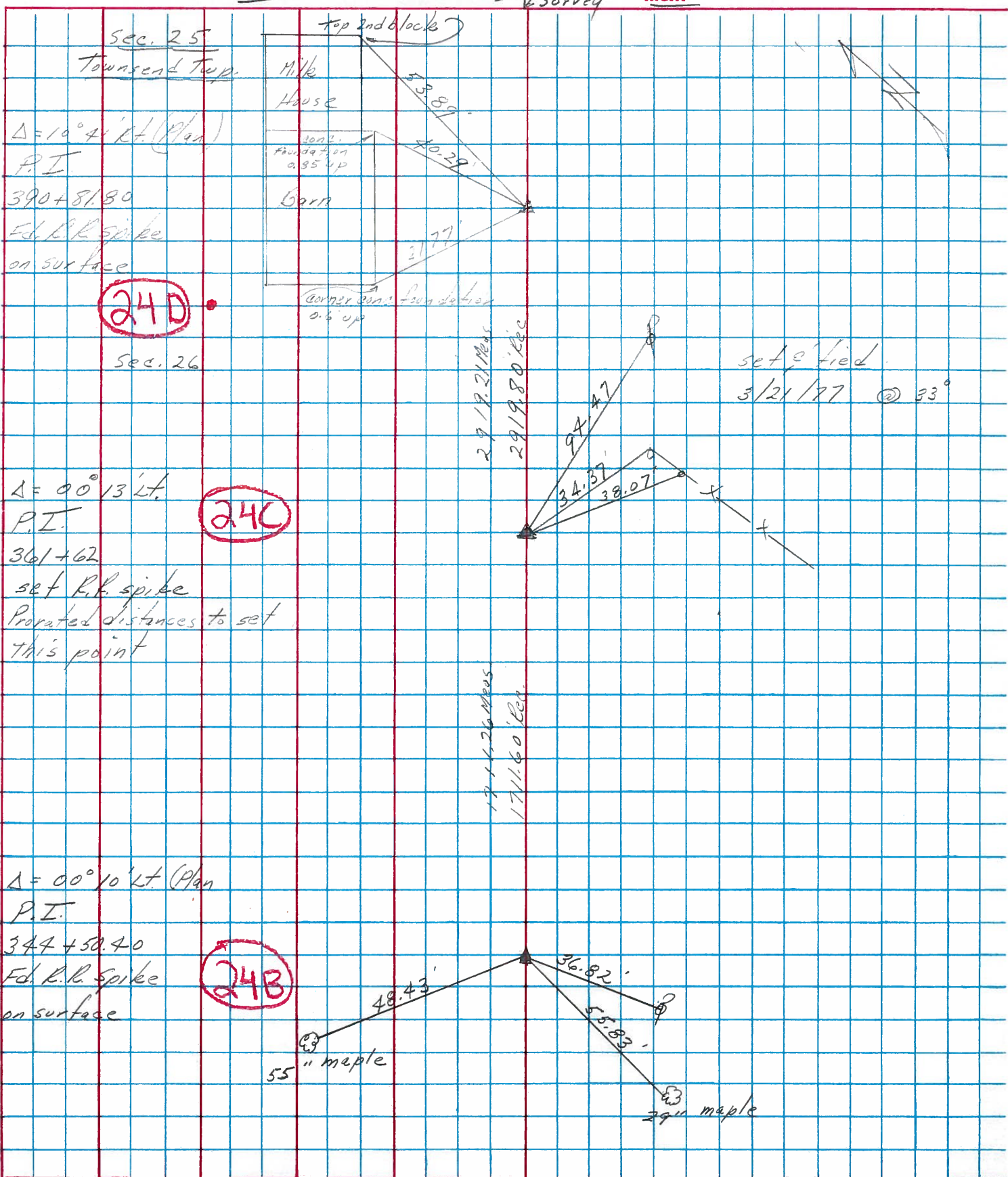


85.241017  
2919.21' Meas.  
2919.80' Rec.

PERSONNEL TITLE PERSONNEL TITLE  
Cronin \_\_\_\_\_  
Ripple \_\_\_\_\_  
Geyman \_\_\_\_\_

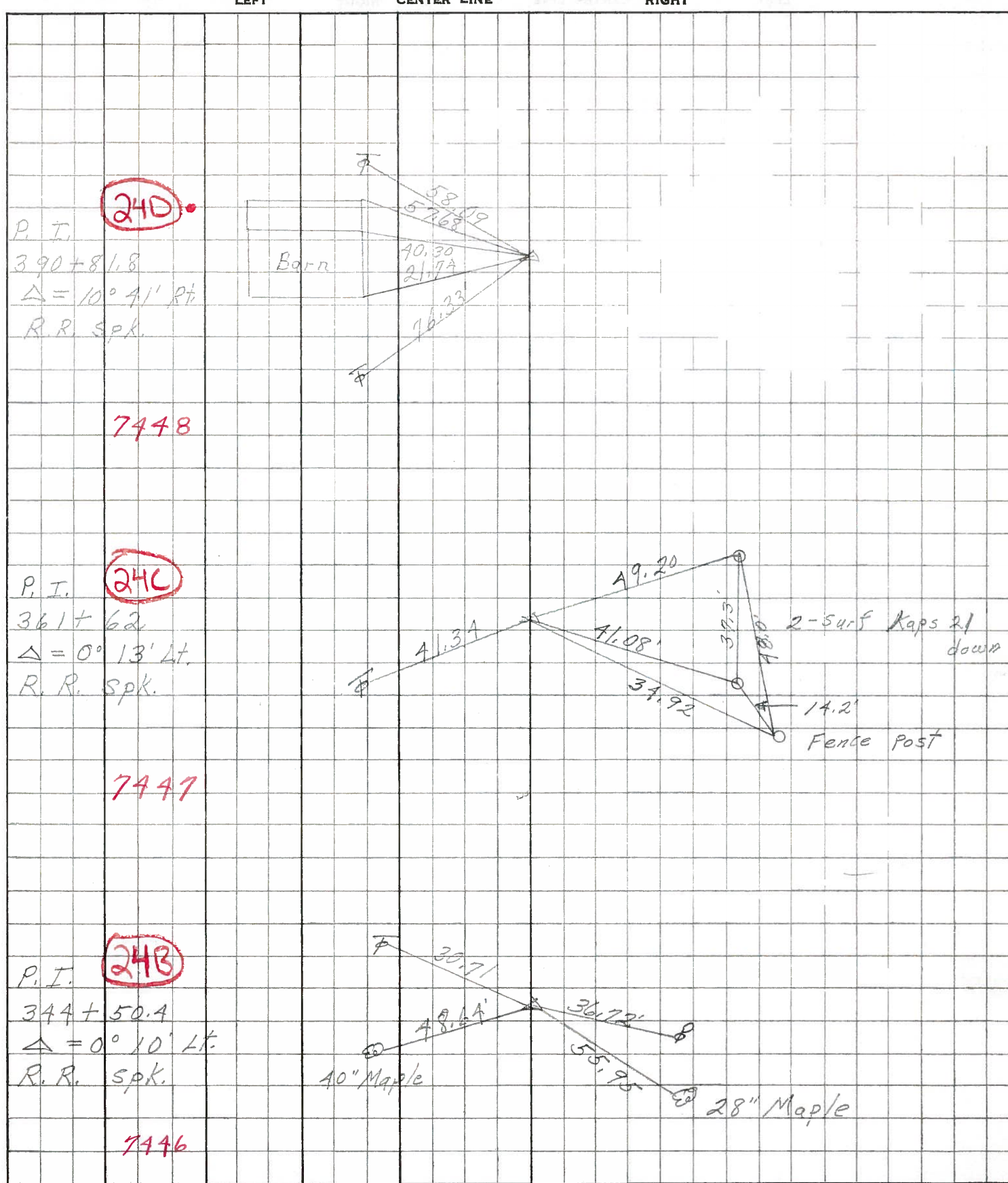
COUNTY County DATE 3/14/77  
 S. R. #101 WEATHER overcast  
 SEC. San. 101-(3.88-11.90) TEMP. 50

DESCRIPTION Ties for Control Points JOB NO. \_\_\_\_\_



PERSONNEL	TITLE	PERSONNEL	TITLE	COUNTY	DATE
Schneider		Potts		Sandusky	4-16-68
Mosser				S. R. 101	WEATHER Fair
Barbour				SEC. N.E. of Clyde	TEMP. 60°
Redding					

DESCRIPTION Ties for Control 175 JOB NO. \_\_\_\_\_



24D

7448

24C

7447

24B

7446

PERSONNEL	TITLE	PERSONNEL	TITLE	COUNTY	DATE	WEATHER	TEMP
KRABILL				SANDUSKY	FEB. 2, 1964		
KOWALESKI				S. R. #101			
GEYMAN				SEC.			
BRUGGEMAN							

DESCRIPTION U.S. #20 North to Erie Co. Line JOB NO. \_\_\_\_\_

