

O.D.O.T. DISTRICT 2 SURVEY OFFICE (USE ONLY)

PERSONNEL

REFERENCE NO. 24 E

SHEET 10 OF 13

NOTES RHOADES

DATE 9/25/12

ROUTE SR 101

H.C. CODER

WEATHER CLDY. FAIR

COUNTY SANDUSKY

R.C. RHOADES

TEMP. 66°

TOWNSHIP TOWNSEND

SECTION 25

T 5 N R 17 E

TYPE MONUMENT P.K./WASHER

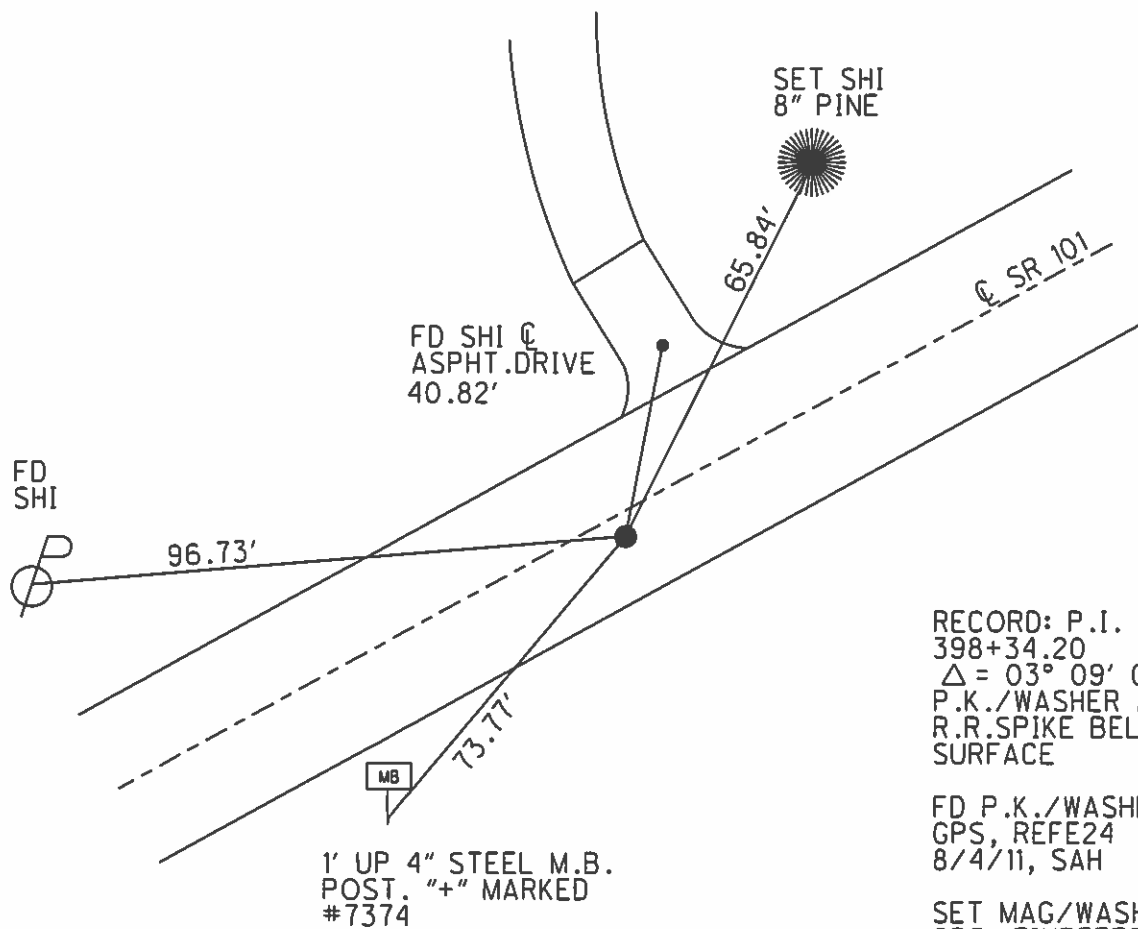
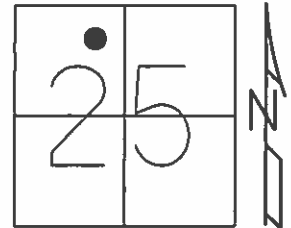
ON SURFACE - ~~BELOW~~ ON

~~LEFT~~ - CL PAV'T - RIGHT 2.4'

7.3' TO RT EDGE PAVEMENT

S.L.M. 603+71.89

Grid: Northing: 620507.498 Easting: 1871825.220



RECORD: P.I.
398+34.20
 $\Delta = 03^{\circ} 09' 00''$ LT
P.K./WASHER AND
R.R.SPIKE BELOW
SURFACE

FD P.K./WASHER
GPS, REFE24
8/4/11, SAH

SET MAG/WASHER
GPS, FINREFE24
3/21/13, SDC

O.D.O.T. DISTRICT 2 SURVEY OFFICE

PERSONNEL _____

REFERENCE NO. _____

SHEET 35 OF 37

NOTES Huss

H.C. Dan Nissen

R.C. Morse

DATE 8-4-97

WEATHER Cldy - Fair

TEMP. + 80° F

ROUTE 101

COUNTY Sandusky

TOWNSHIP Townsend

SECTION 25

T 5 N R 17 E

TYPE MONUMENT PK/Wash.

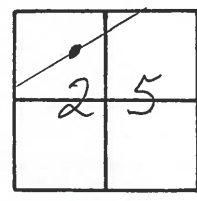
ON SURFACE - BELOW Yes

~~LEFT~~ RIGHT 2.4 Rt.

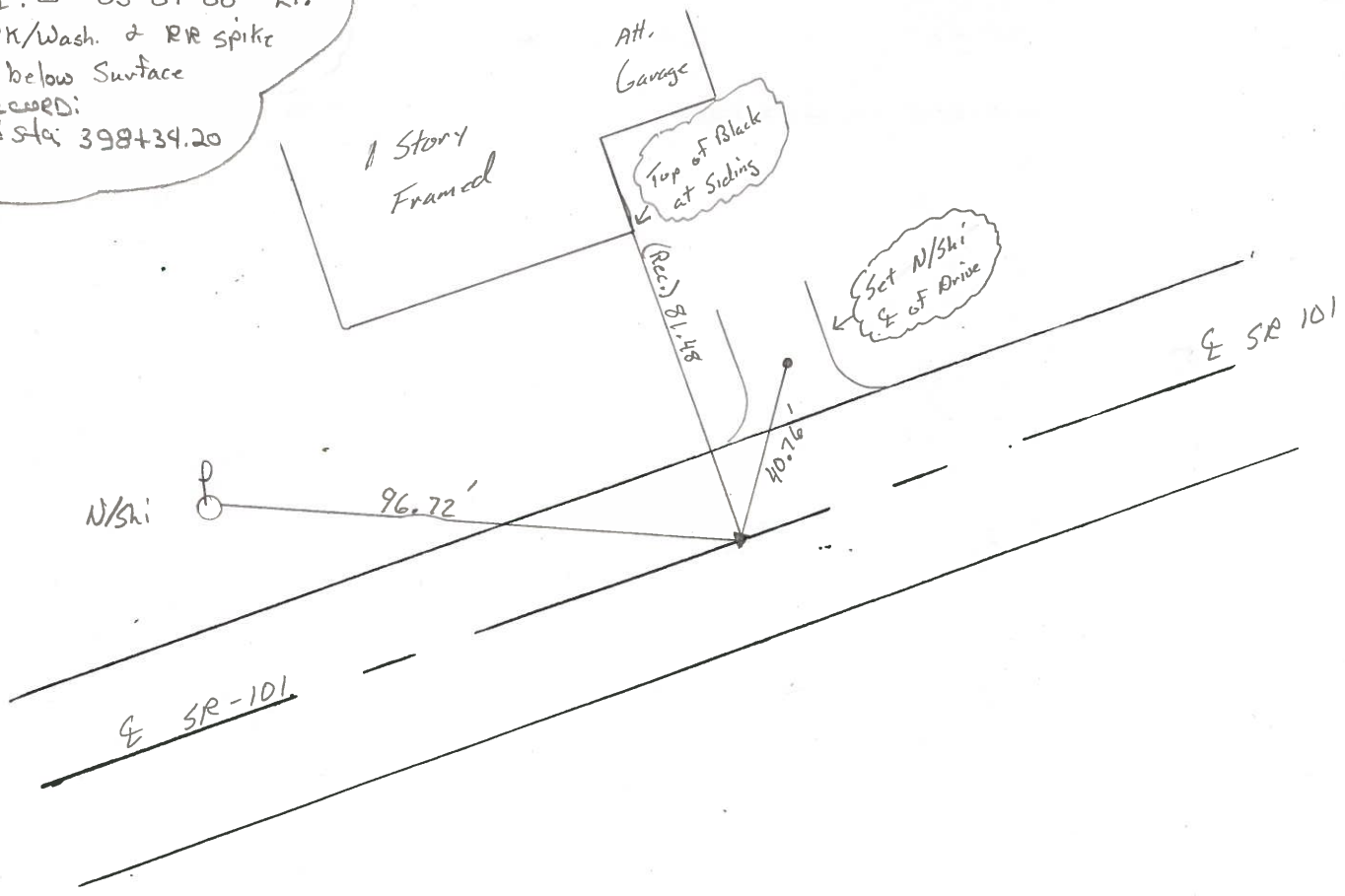
7.3 TO RT EDGE PAVEMENT

S.L.M. 18+431.5 SW

24E



PI. Δ = 03° 09' 00" Lt.
 PK/Wash. & RR spike
 below Surface
 Record:
 old sta: 398+34.20



O.D.O.T. DISTRICT 2 SURVEY OFFICE

PERSONNEL _____

REFERENCE NO. _____

SHEET 28 OF _____

NOTES Cronin

H.C. Ripple

R.C. Barbour

DATE 10/29/87

WEATHER sunny

TEMP. 50°

ROUTE #101

COUNTY Sandusky

TOWNSHIP Townsend

SECTION 25

T. 5 N R. 17 E

TYPE MONUMENT P.K. & washer

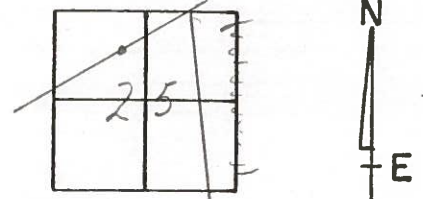
ON SURFACE - BELOW on surface

LEFT- & PAV'T. - RIGHT 2 Rt. & Pav't

TO _____ EDGE PAVEMENT

S.L.M. old Sta. 398 + 34.20

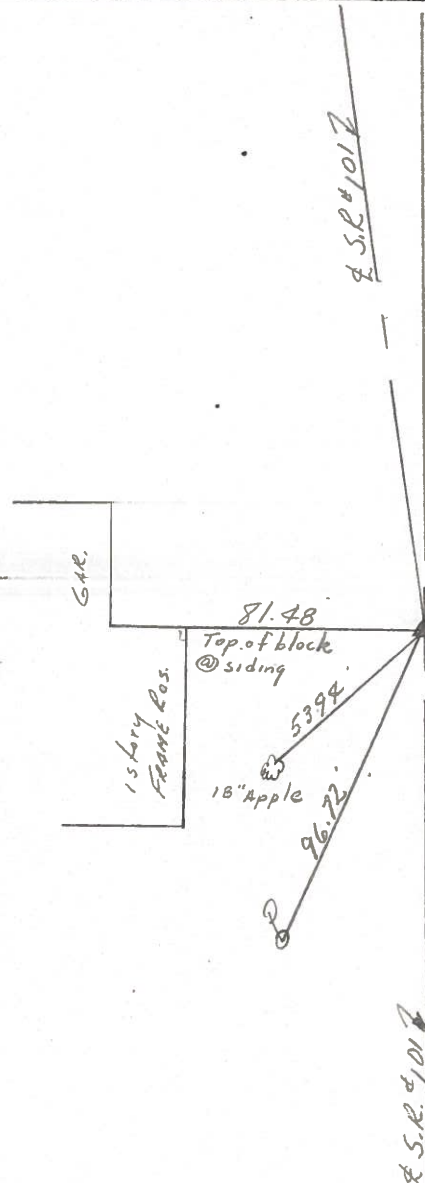
24E



P.T. $\Delta = 03^{\circ}09'00''$ Lt. Lec.

P.K. & washer & R.P.

Spike below surface



PERSONNEL TITLE PERSONNEL TITLE

Cronin Schneider
Ripple Mosser
Geyman Barbour

COUNTY Sandusky DATE Nov. 16, 1976

S. R. #101 WEATHER sunny

SEC. San. 101-(3.88-11.90) TEMP.

DESCRIPTION Ties for Control Points JOB NO.

LEFT

CENTER LINE

RIGHT

Section 25

Townsend Twp.

S.L.M. = 618+03

P.O.T

410+88

Fd. PK, Nail & Washer
on surface

25A

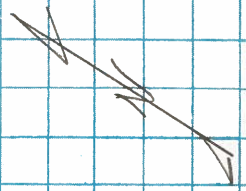
17" cedar

41.80

20" maple

54.76

53.66



25

P.O.T.

410+00

Fd. mine spike
on surface

S.R. #412

59.97

65.97

101.52

S.L.M. = 605+49

24E

Δ = 3009' LT (Plan)

P.I.

398+34.20 Plan

Fd. R.R. spike
on surface

1 story
frame res

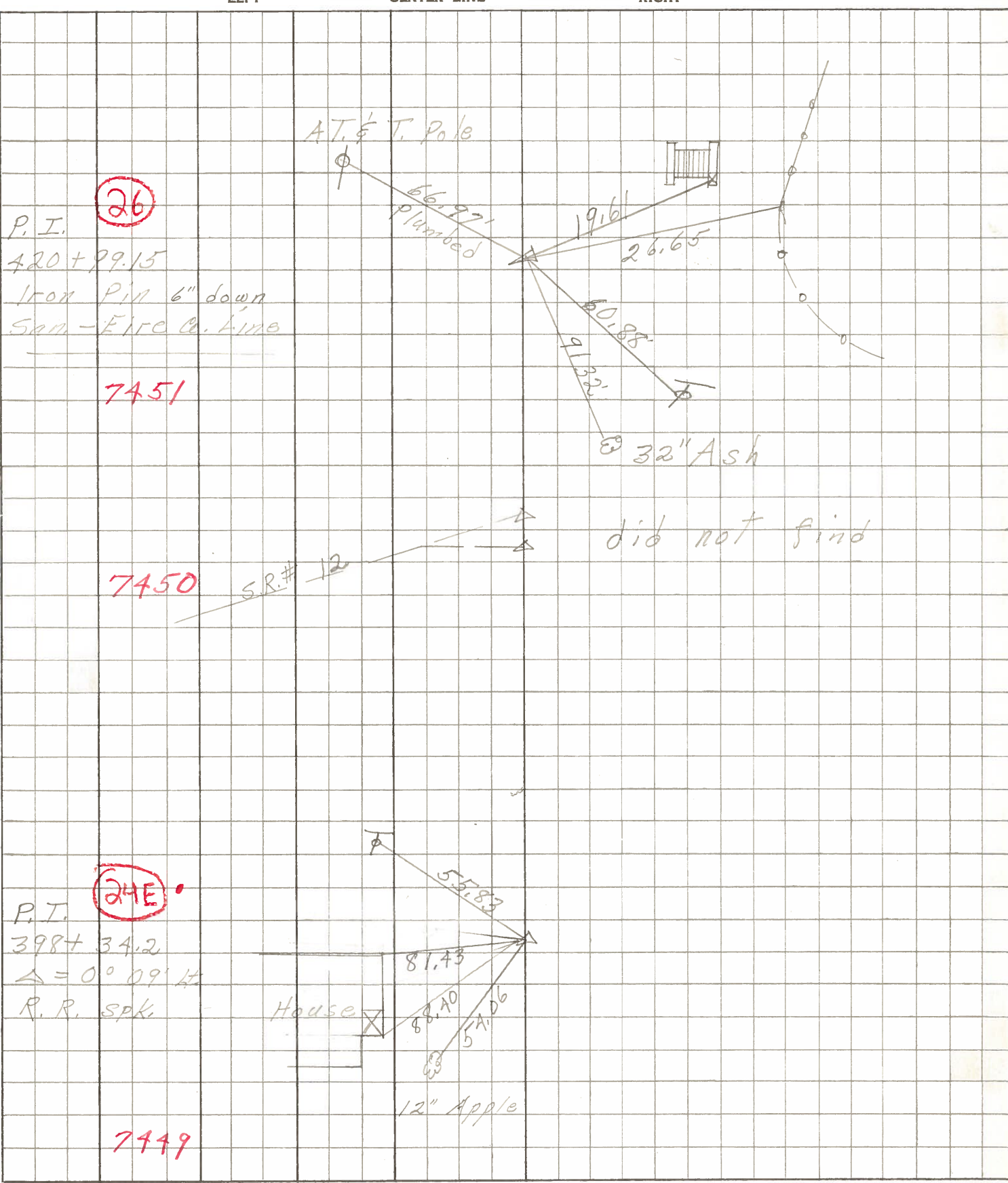
17" apple

81.47

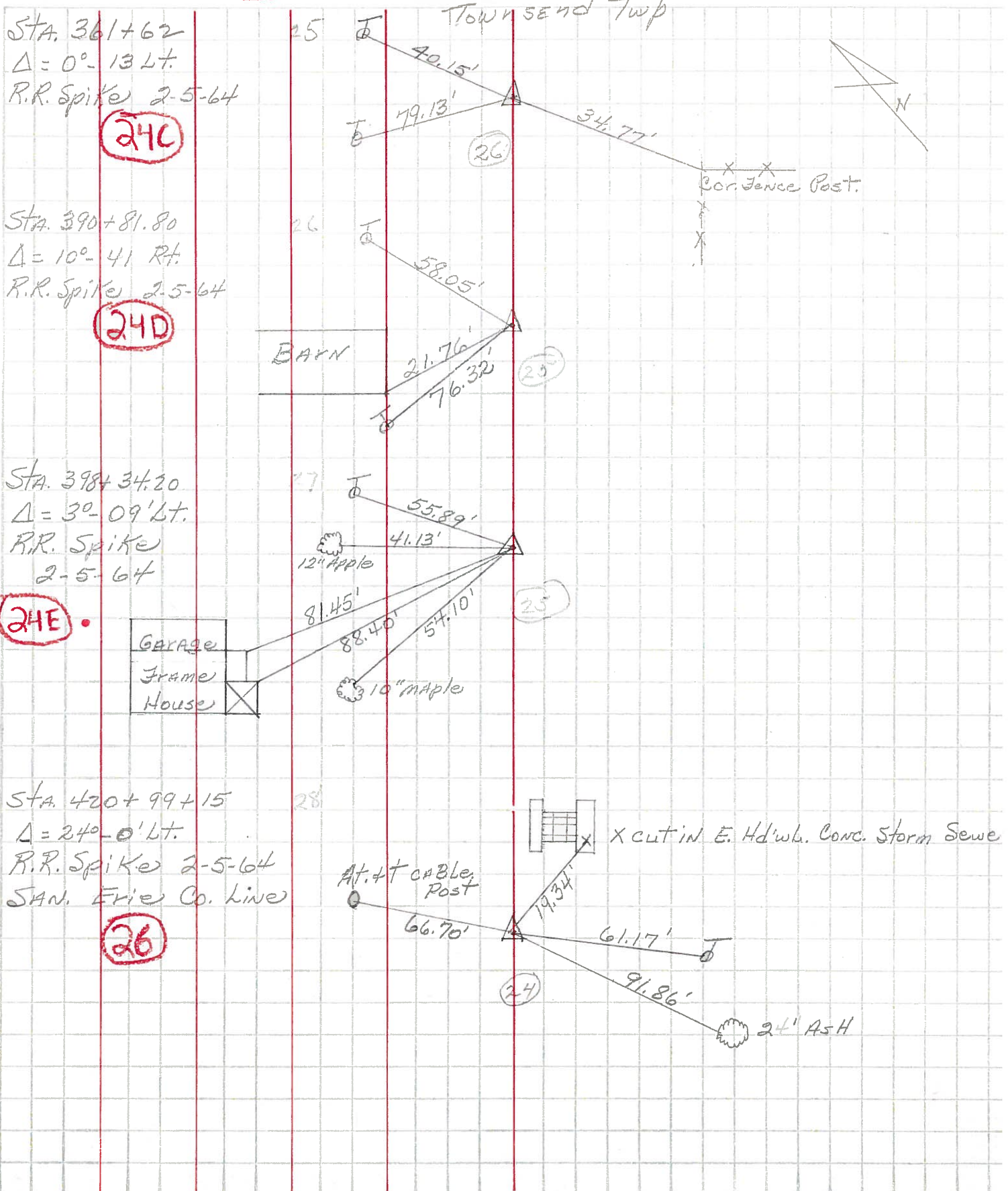
54.05

96.71

PERSONNEL	TITLE	PERSONNEL	TITLE	COUNTY	DATE
<u>Schneider</u>		<u>Potts</u>		<u>Sandusky</u>	<u>7-16-68</u>
<u>Mosser</u>				S. R.	WEATHER
<u>Barbour</u>				<u>101</u>	<u>Fair</u>
<u>Redding</u>				SEC.	TEMP.
				<u>N. E. of Clyde</u>	<u>60°</u>
DESCRIPTION	<u>Ties for Control Points</u>				JOB NO.



PERSONNEL	TITLE	PERSONNEL	TITLE	COUNTY	DATE	S. R.	WEATHER	SEC.	TEMP.	DESCRIPTION	JOB NO.
KrabiLL				SANDUSKY Ky	FEB. 2, 1964	#101				U.S. #20 North to Erie Co. Line	
Kowaleski											
Geyman											
Bruggeman											



24C

24D

24E

26

26

25

25

24