

O.D.O.T. DISTRICT 2 SURVEY OFFICE (USE ONLY)

PERSONNEL

REFERENCE NO. 25

SHEET 11 OF 13

NOTES RHOADES

DATE 9/25/12

ROUTE SR 101

H.C. CODER

WEATHER CLDY. FAIR

COUNTY SANDUSKY

R.C. RHOADES

TEMP. 66°

TOWNSHIP TOWNSEND

SECTION 25

T 5 N R 17 E

TYPE MONUMENT P.K./WASHER

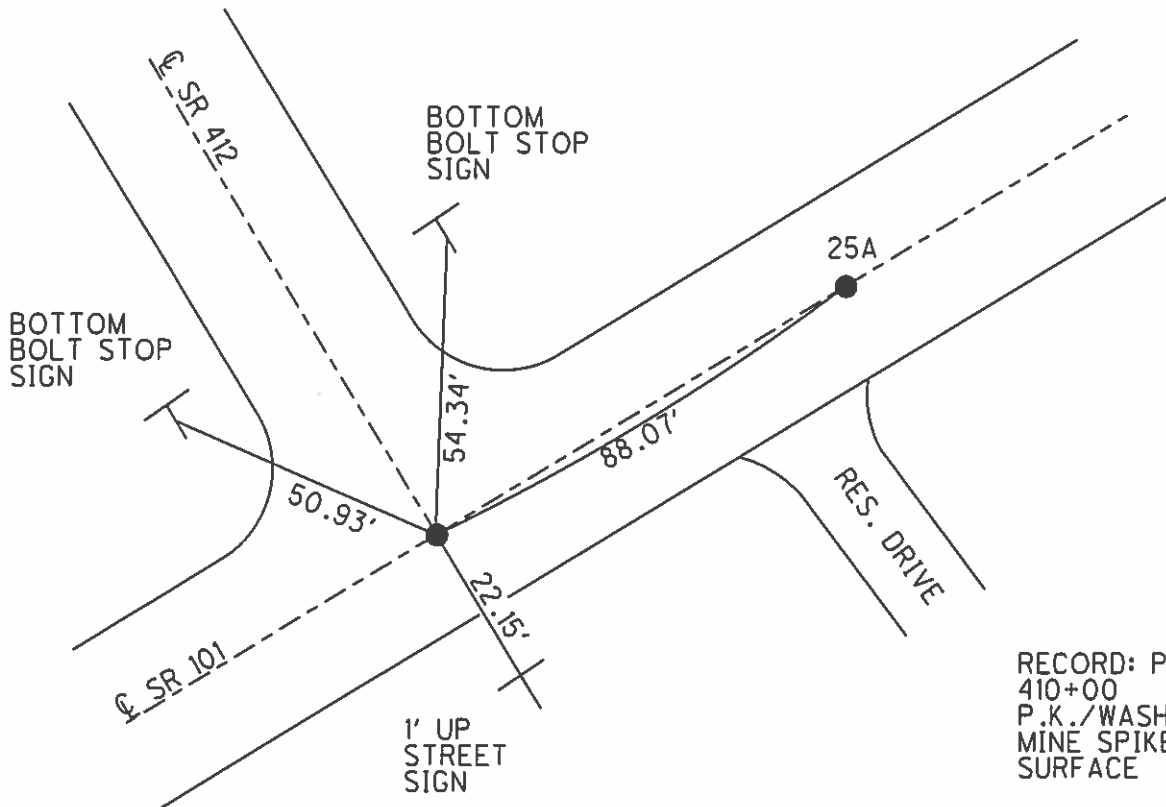
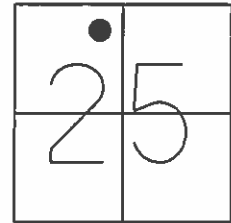
ON SURFACE - ~~BELOW~~ ON

LEFT - Q PAV'T - RIGHT ON

- TO - EDGE PAVEMENT

S.L.M. 615+37.47

Grid: Northing: 621094.276 Easting: 1872832.199



RECORD: P.O.T.
410+00
P.K./WASHER OVER
MINE SPIKE BELOW
SURFACE

FD P.K./WASHER
GPS, REFA25
8/4/11, SAH

SET MAG/WASHER
GPS, FINREF25
3/21/13, SDC

O.D.O.T. DISTRICT 2 SURVEY OFFICE

PERSONNEL

REFERENCE NO. 25

SHEET 36 OF 37

NOTES Huss

H.C. VanNusen

R.C. Moser

DATE 8-11-97

WEATHER Cldy-Fair

TEMP. +72°F

ROUTE 161

COUNTY Sandusky

TOWNSHIP Townsend

SECTION 25

T. 5 N. R. 17 E.

TYPE MONUMENT PK/W's

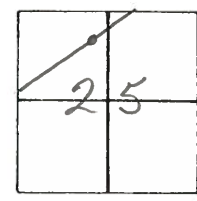
ON SURFACE - ~~BELOW~~ surface

~~LEFT~~ - PAV'T. - ~~RIGHT~~ E Pav.

TO EDGE PAVEMENT

S.L.M. old sta. (A) 410+00 (B) 410+88

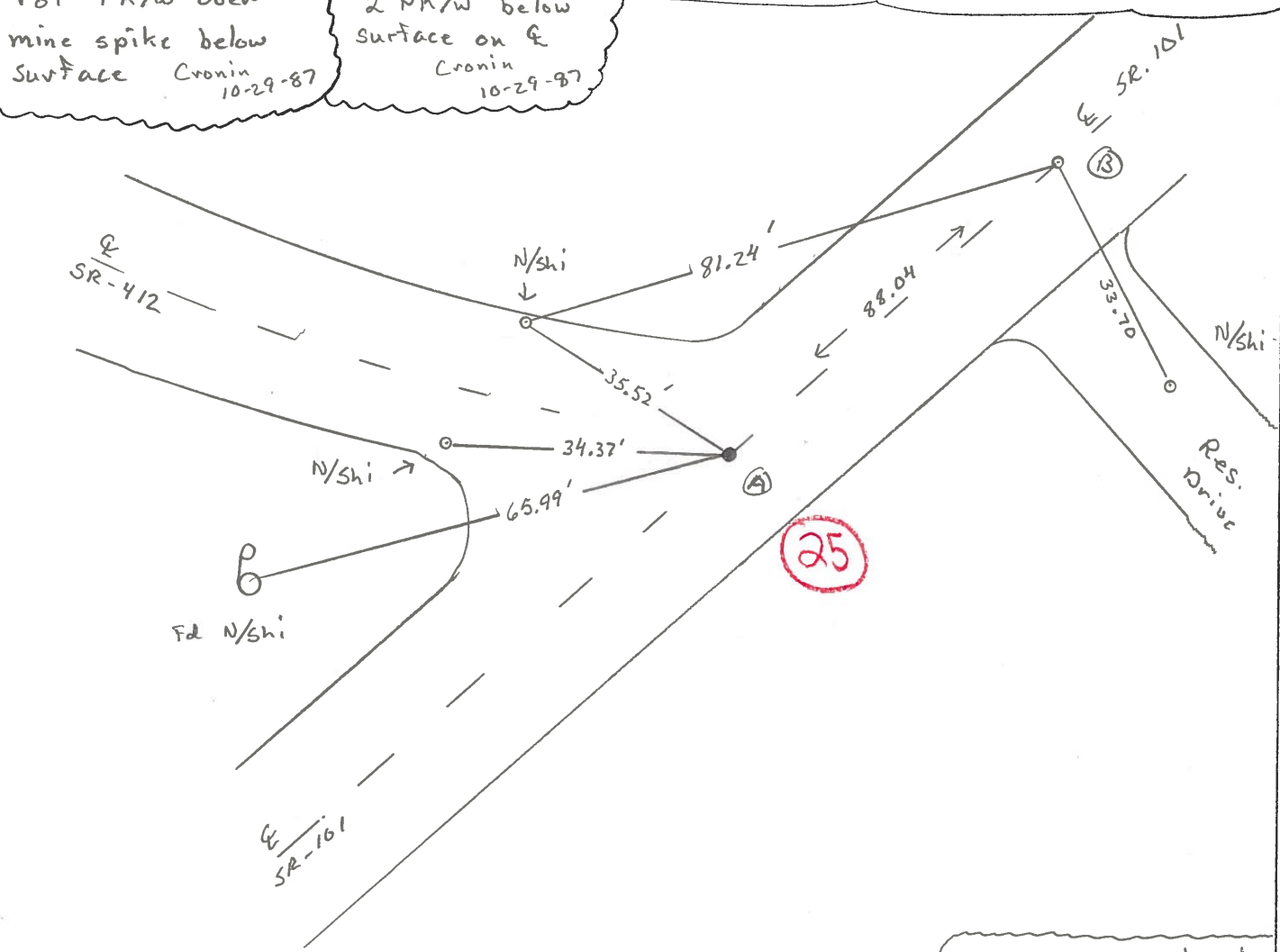
* See NOTE *
at BOTTOM
* Right Corner *



Record (A)
Pot PK/W over
mine spike below
Surface Cronin
10-29-87

Record (B)
2 PK/W below
surface on E
Surface Cronin
10-29-87

Note: ALL MEASUREMENTS shown are Record.



Attempts to locate
points A+B were
unsuccessful used both
101 and 412 notes
SAH

O.D.O.T. DISTRICT 2 SURVEY OFFICE

PERSONNEL

REFERENCE NO. 25 SHEET 29 OF _____

NOTES Cronin

H.C. Ripple

R.C. Barbour

DATE 10/29/87

WEATHER sunny

TEMP. 50°

ROUTE #101

COUNTY Sandusky

TOWNSHIP Townsend

SECTION 25

T 5 N R 17 E

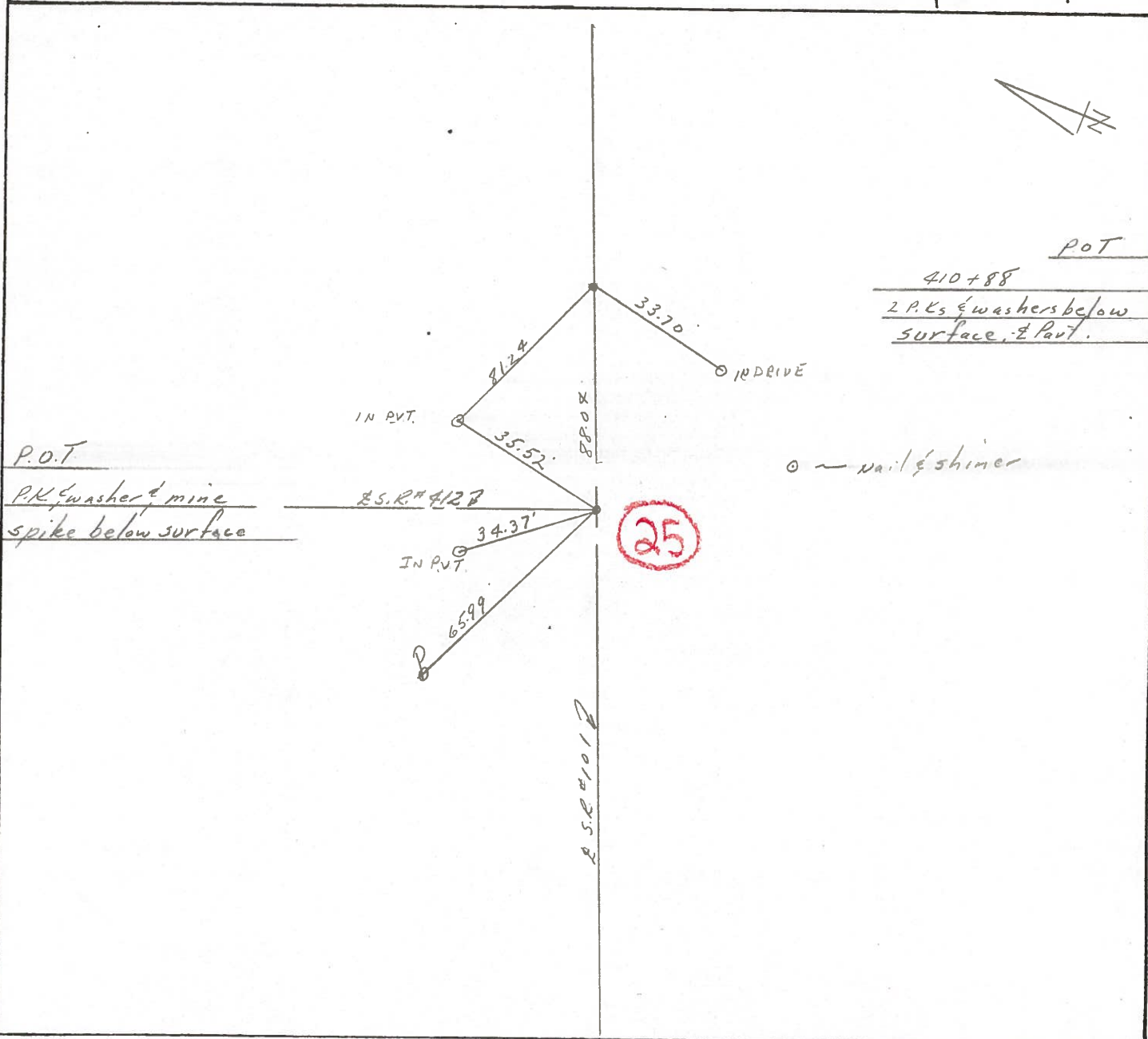
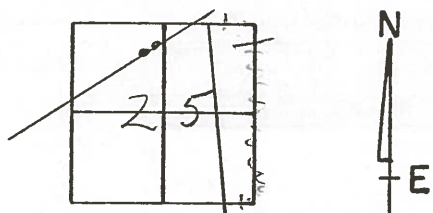
TYPE MONUMENT PK & washer

ON SURFACE - BELOW on surface

LEFT - & PAV'T. - RIGHT & Pavt.

____ TO ____ EDGE PAVEMENT

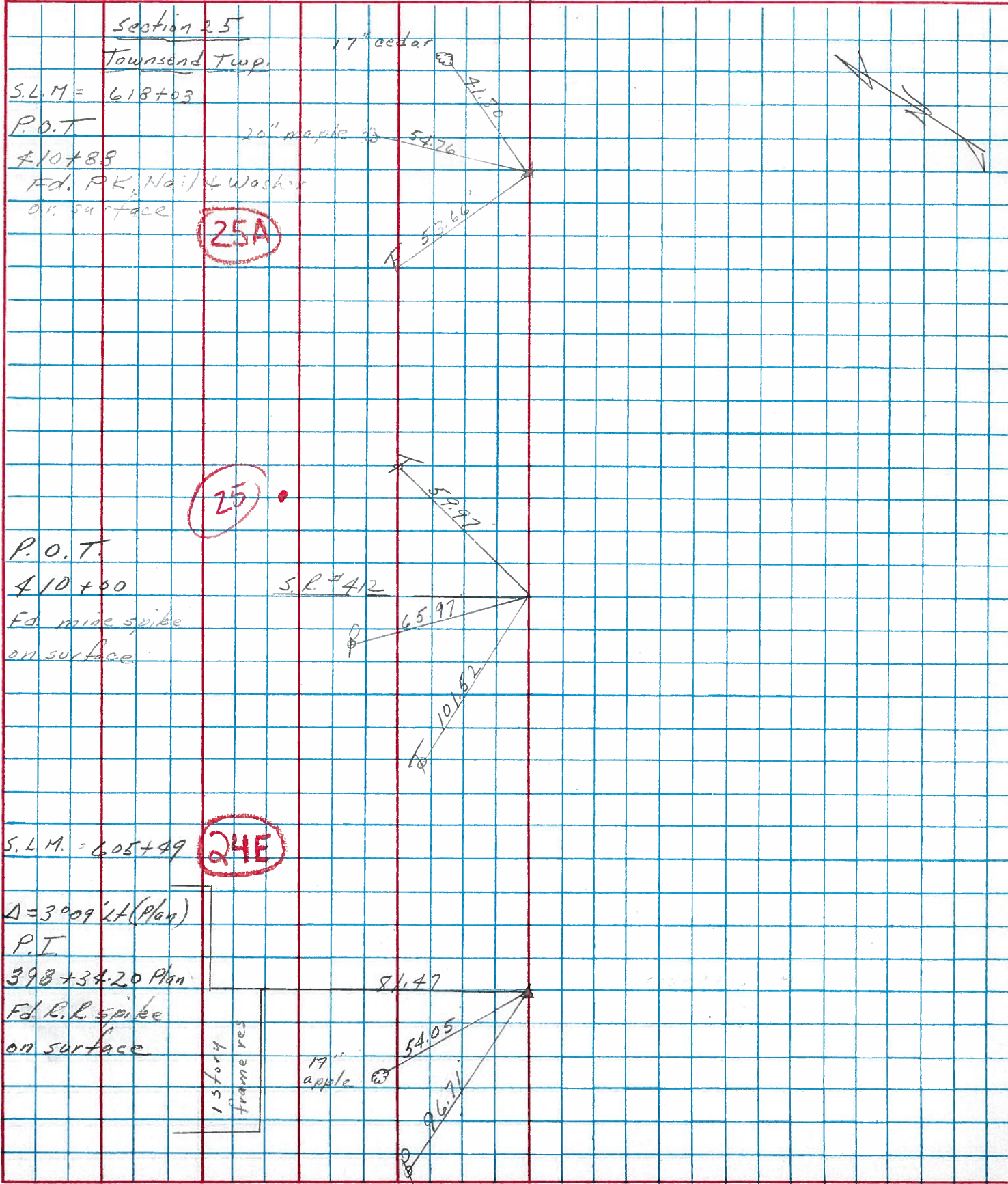
S.L.M. old Sta. 410+00



PERSONNEL	TITLE	PERSONNEL	TITLE
Cronin		Schneider	
Ripple		Mosser	
Geyman		Barbour	

COUNTY Sandusky DATE Nov. 16, 1976
 S. R. #101 WEATHER sunny
 SEC. San. 101-(3.88-11.90) TEMP. _____

DESCRIPTION Ties for Control Points JOB NO. _____



PERSONNEL TITLE PERSONNEL TITLE

Schneider
Mosser
Geyman

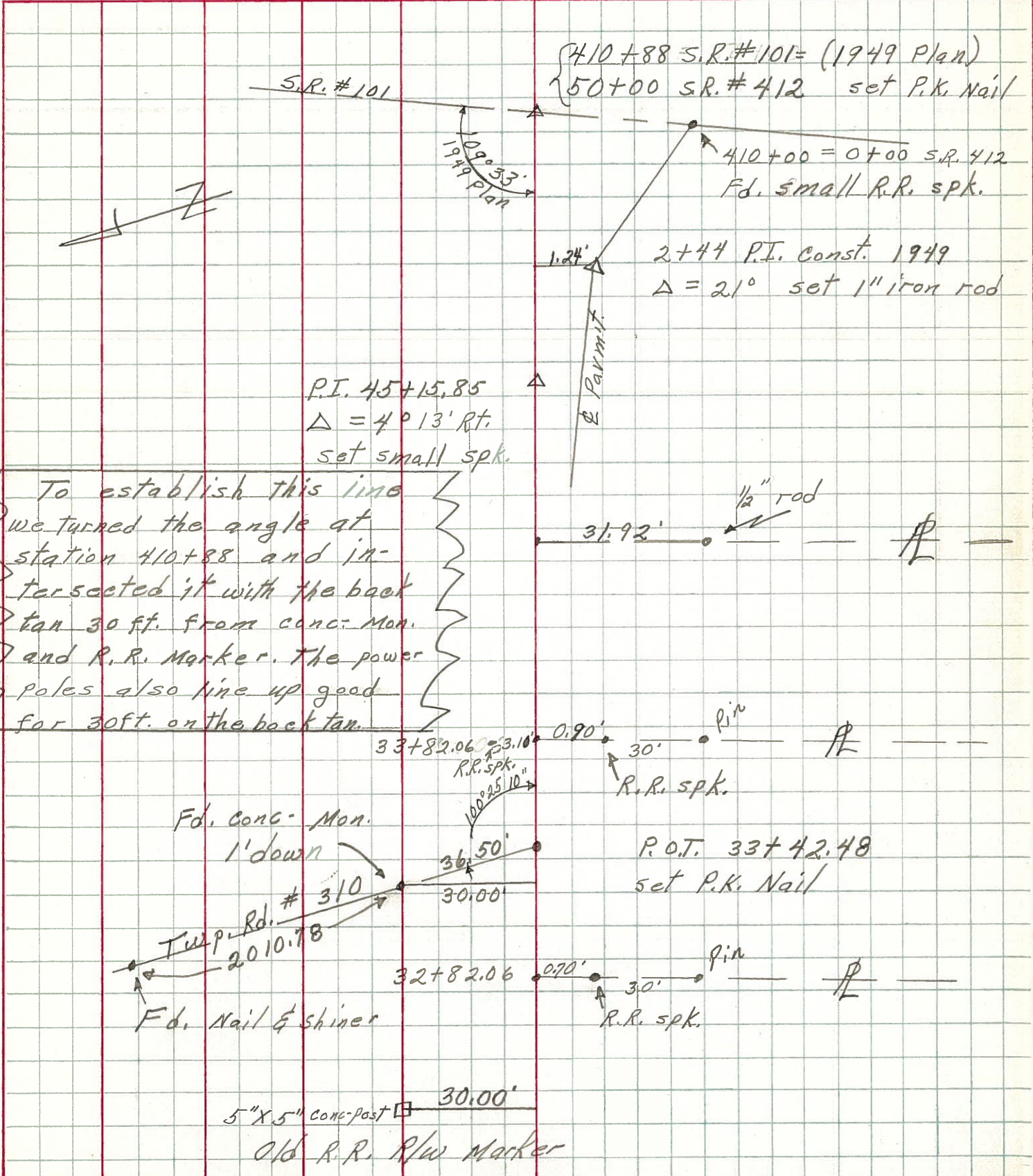
COUNTY Sandusky DATE 7-9-72

S. R. 412 WEATHER Hot

SEC. 24 TEMP. 88°

DESCRIPTION Townsend Twp. JOB NO. _____

LEFT CENTER LINE RIGHT

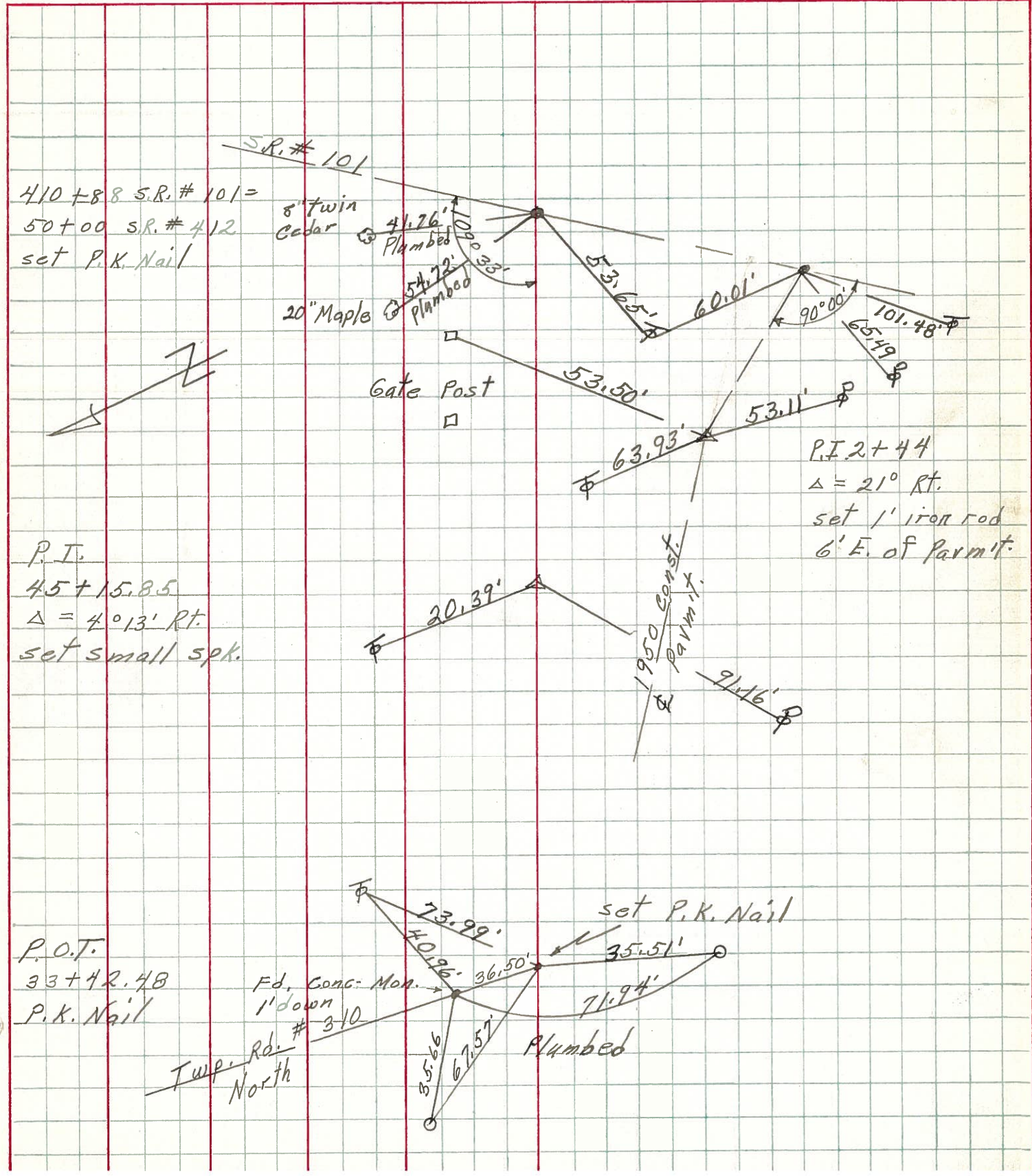


To establish this line we turned the angle at station 410+88 and intersected it with the back tan 30 ft. from conc. Mon. and R.R. Marker. The power poles also line up good for 30ft. on the back tan.

5" x 5" conc. post 30.00'
Old R.R. R/W marker

PERSONNEL	TITLE	PERSONNEL	TITLE	COUNTY	DATE
<u>Schneider</u>				<u>Sandusky</u>	<u>7-17-72</u>
<u>Barbour</u>				S. R.	WEATHER
<u>Geyman</u>				<u>412</u>	<u>Hot</u>
				SEC.	TEMP.
				<u>24</u>	<u>88°</u>

DESCRIPTION Townsend Twp. JOB NO. _____



410 + 88 S.R. # 101 =
50 + 00 S.R. # 412
set P.K. Nail

8" twin Cedar @ 41.26' Plumbed
20" Maple @ 54.72' Plumbed

P.T.
45 + 15.85
 $\Delta = 4^\circ 13'$ Rt.
set small spk.

P.I. 2 + 44
 $\Delta = 21^\circ$ Rt.
set 1' iron rod
6' E. of Parmit.

P.O.T.
33 + 42.48
P.K. Nail

Fd. Conc. Mon. 1' down
310

~~Twp. Rd. North~~

Plumbed