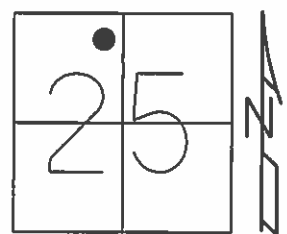


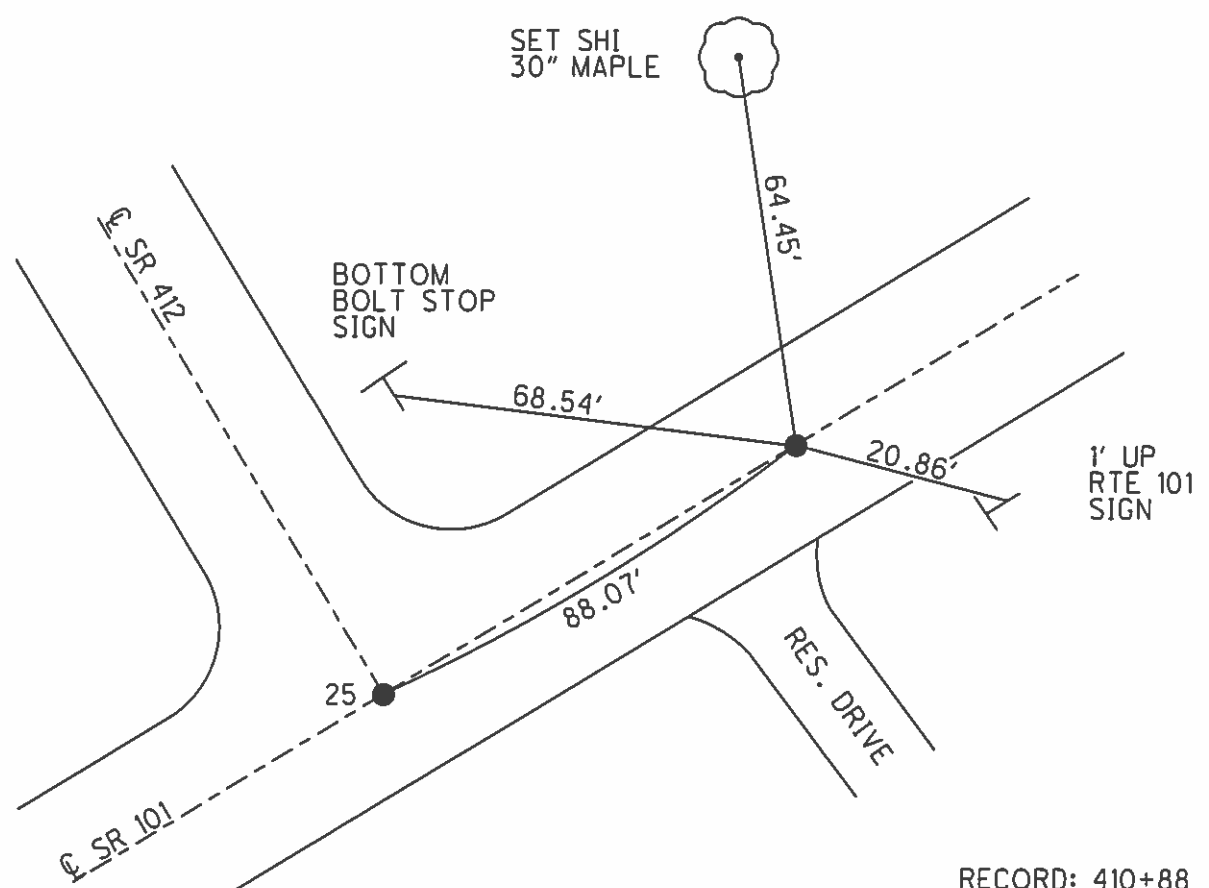
O.D.O.T. DISTRICT 2 SURVEY OFFICE (USE ONLY)

PERSONNEL _____ REFERENCE NO. 25 A SHEET 12 OF 13
 NOTES RHOADES DATE 9/25/12 ROUTE SR 101
 H.C. CODER WEATHER CLDY. FAIR COUNTY SANDUSKY
 R.C. RHOADES TEMP. 66° TOWNSHIP TOWNSEND
 _____ SECTION 25
 _____ T. 5 N R. 17 E

TYPE MONUMENT P.K./WASHER
 ON SURFACE - ~~BELOW~~ ON
 LEFT - Q PAV'T - RIGHT ON
- TO - EDGE PAVEMENT
 S.L.M. 616+25.48



Grid: Northing: 621138.568 Easting: 1872908.323



RECORD: 410+88
 2 P.K./WASHER'S
 BELOW SURFACE
 FD P.K./WASHER
 GPS, REFB25
 8/4/11, SAH
 SET MAG/WASHER
 GPS, FINREFA25
 3/22/13, SDC

O.D.O.T. DISTRICT 2 SURVEY OFFICE

PERSONNEL

REFERENCE NO. 25

SHEET 36 OF 37

NOTES Huss

H.C. VanDusen

R.C. Moser

DATE 8-11-97

WEATHER Cldy-Fair

TEMP. +72°F

ROUTE 161

COUNTY Sandusky

TOWNSHIP Townsend

SECTION 25

T 5 N R 17 E

TYPE MONUMENT PK/W's

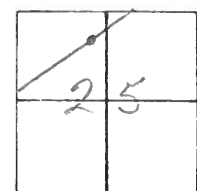
ON SURFACE - ~~BELOW~~ surface

~~LEFT~~ - PAV'T. - ~~RIGHT~~ E Pav.

TO EDGE PAVEMENT

S.L.M. old sta. (A) - 410 + 00 (B) 410 + 88

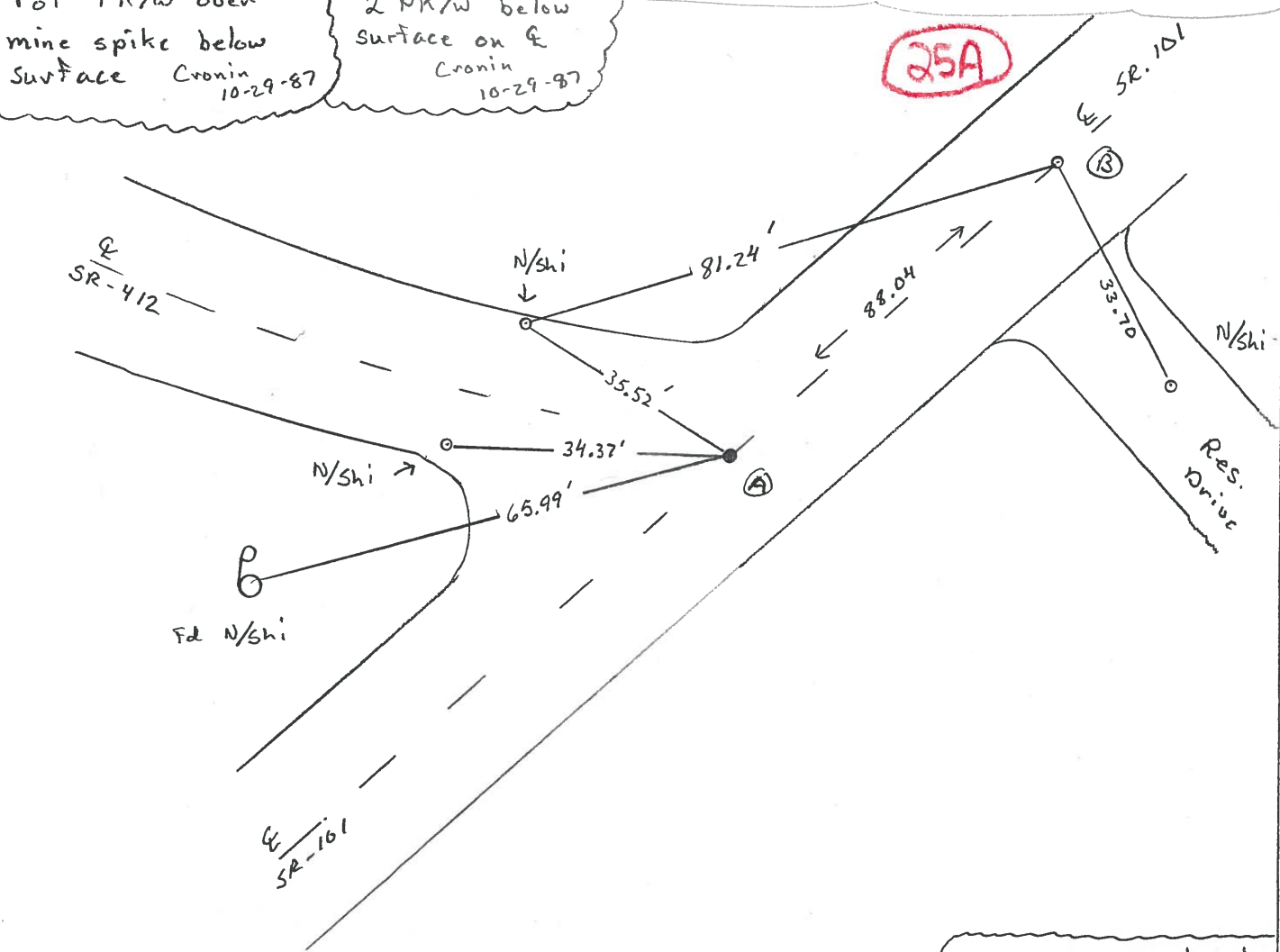
* See notes *
at Bottom
* Right Corner *



Record (A)
Pot PK/W over
mine spike below
surface Cronin
10-29-87

Record (B)
2 PK/W below
surface on E
Cronin
10-29-87

Note: ALL MEASUREMENTS shown and Record.



Attempts to locate
points A & B were
unsuccessful used both
101 and 412 notes
SAH

O.D.O.T. DISTRICT 2 SURVEY OFFICE

PERSONNEL _____

REFERENCE NO. 25 SHEET 29 OF _____

NOTES Cronin

H.C. Ripple

R.C. Barbour

DATE 10/29/87

WEATHER sunny

TEMP. 50°

ROUTE #101

COUNTY Sandusky

TOWNSHIP Townsend

SECTION 25

T 5 N R 17 E

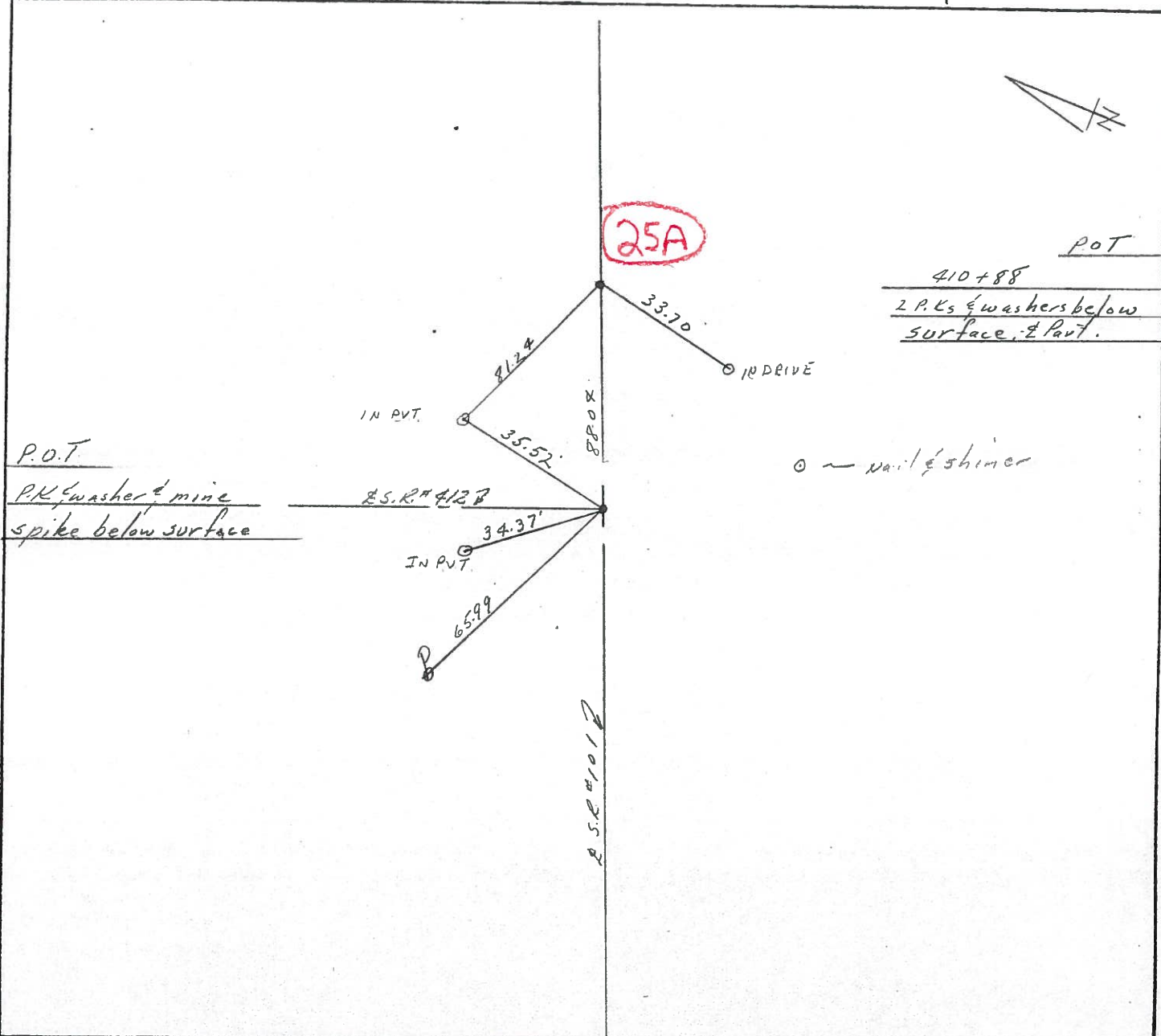
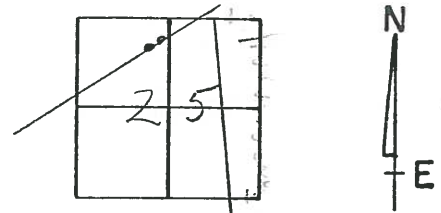
TYPE MONUMENT P.K. & washer

ON SURFACE - BELOW on surface

LEFT- & PAV'T. - RIGHT & Pavt.

TO EDGE PAVEMENT

S.L.M. old Sta. 410+00



PERSONNEL	TITLE	PERSONNEL	TITLE
Cronin		Schneider	
Ripple		Mosser	
Geyman		Barbour	

COUNTY Sandusky DATE Nov. 16, 1976

S. R. #101 WEATHER sunny

SEC. San. 101-(3.88-11.90) TEMP

DESCRIPTION Ties for Control Points LEFT CENTER LINE RIGHT JOB NO.

