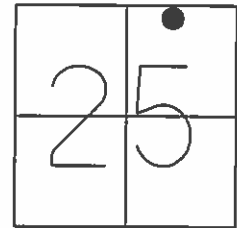


O.D.O.T. DISTRICT 2 SURVEY OFFICE (USE ONLY)

PERSONNEL _____ REFERENCE NO. 26 SHEET 13 OF 13
 NOTES RHOADES DATE 9/25/12 ROUTE SR 101
 H.C. CODER WEATHER CLDY. FAIR COUNTY SANDUSKY
 R.C. RHOADES TEMP. 66° TOWNSHIP TOWNSEND
 _____ SECTION 25
 _____ T 5 N R 17 E

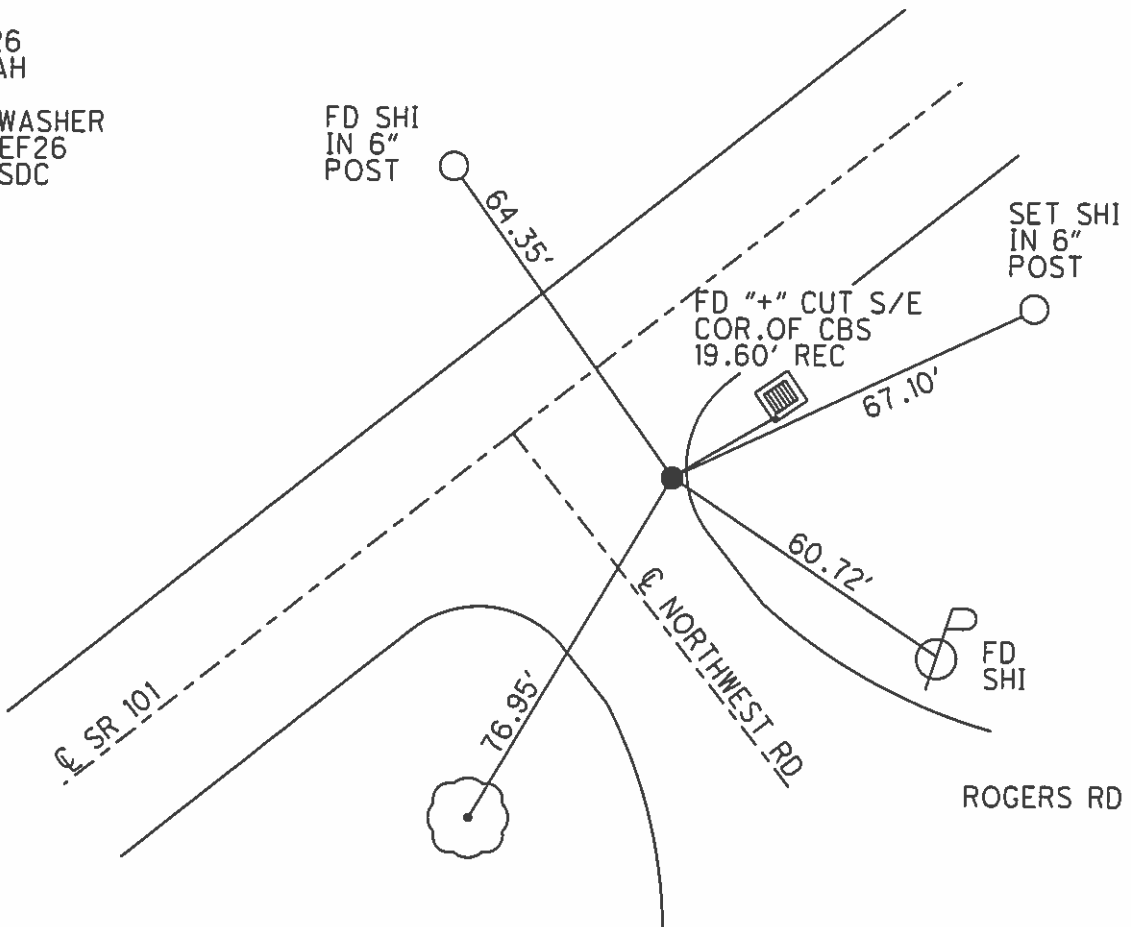
TYPE MONUMENT P.K./WASHER
~~ON SURFACE~~ - BELOW 0.2'
~~LEFT~~ - Q PAV'T - RIGHT 29.0'
24.4' TO Q EDGE PAVEMENT (TO NORTHWEST ST.)
 S.L.M. 626+36.31
 Grid: Northing: 621647.492 Easting: 1873781.711



RECORD: P.I.
 420+99.15
 $\Delta = 24^{\circ} 00' 00''$ LT

FD P.K.
 GPS, REF26
 8/4/11, SAH

SET MAG/WASHER
 GPS, FINREF26
 3/22/13, SDC



O.D.O.T. DISTRICT 2 SURVEY OFFICE

PERSONNEL _____

REFERENCE NO. _____

SHEET 37 OF 37

NOTES Huss

H.C. Van Dusen

R.C. Moser

DATE 8-11-97

WEATHER Cldy-Rain

TEMP. +74° F

ROUTE SR-101

COUNTY Sandusky

TOWNSHIP Townsend

SECTION 25

T. 5 N. R. 17 E

TYPE MONUMENT P.I. & WASHER

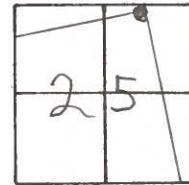
ON SURFACE ~~BELOW~~ yes

~~LEFT HAND POINT~~ (RIGHT) 29.6

24.4 TO & EDGE PAVEMENT of Northwest St.

S.L.M. 19+135.2 SKK

26



RECORD:
 old sta 420+99.15
 P.I. Δ = 240-00'00" Lt.
 I. Rod knocked over
 from linear grading

RECORD: NOT POSITIVE POINT IS ON NORTH SECTION LINE



O.D.O.T. DISTRICT 2 SURVEY OFFICE

PERSONNEL _____

REFERENCE NO. _____

SHEET 30 OF _____

NOTES Cronin

H.C. Ripple

R.C. Barbour

DATE 10/29/87

WEATHER sunny

TEMP. 50°

ROUTE # 101

COUNTY Sandusky

TOWNSHIP Townsend

SECTION 25

T 5 N R 17 E

TYPE MONUMENT P.K. & washer

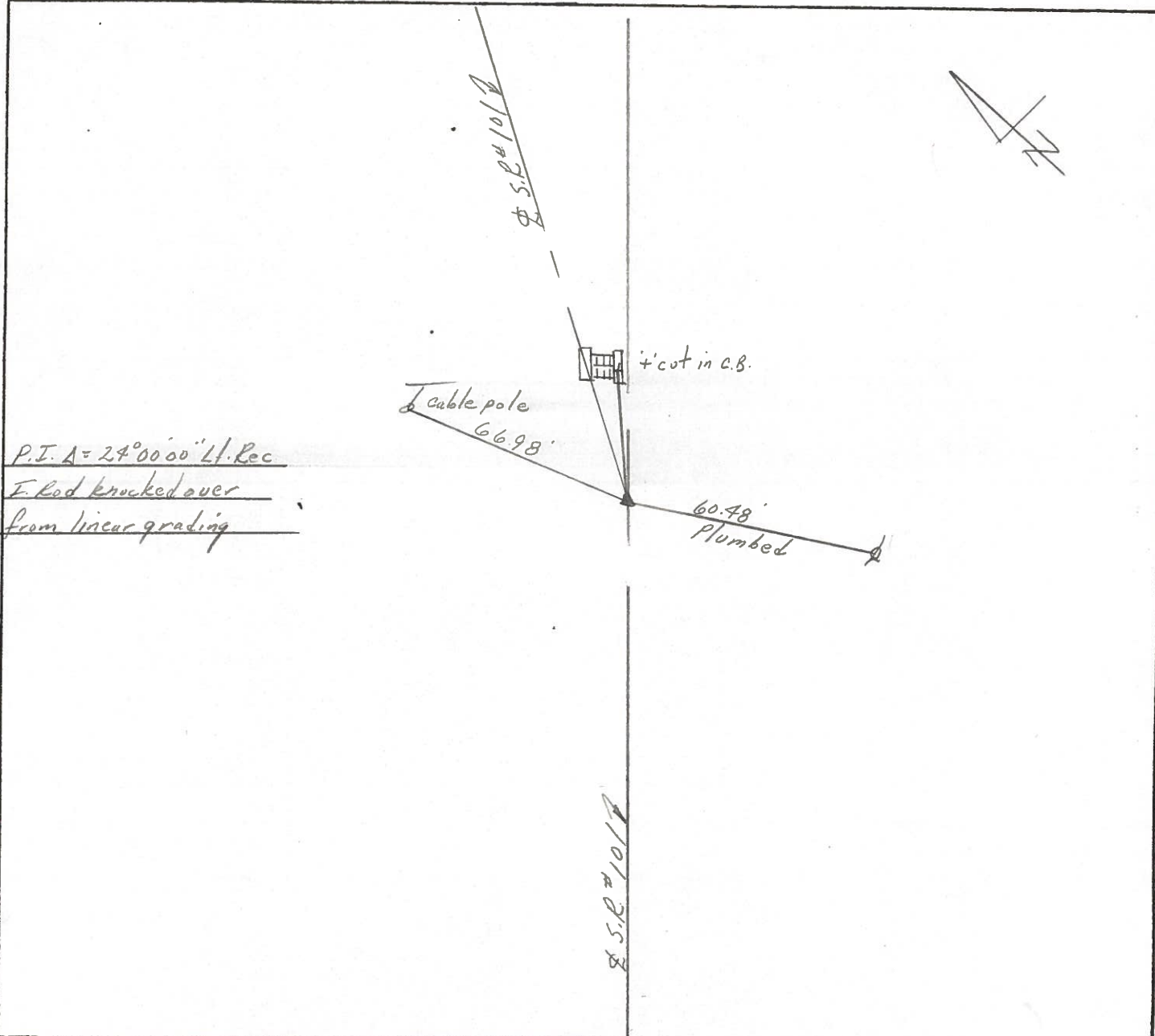
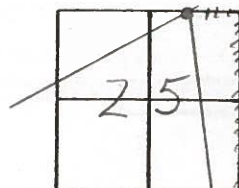
ON SURFACE - BELOW on surface

LEFT - CL PAV'T. - RIGHT 29 Rt. & Pav't

TO EDGE PAVEMENT

S.L.M. old Sta. 420+99.15

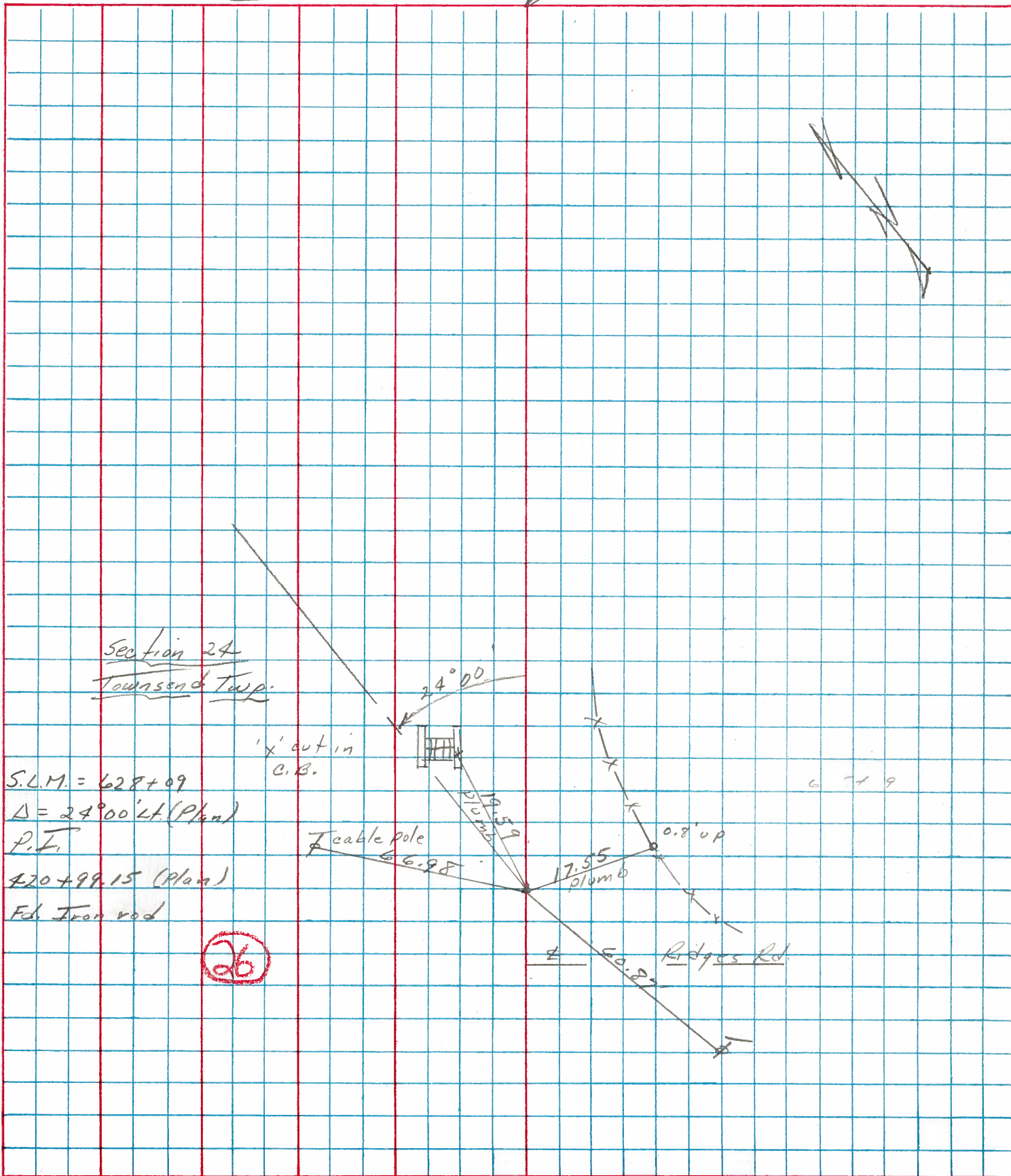
26



PERSONNEL	TITLE	PERSONNEL	TITLE
<u>Cronin</u>		<u>Schneider</u>	
<u>Ripple</u>		<u>Mosser</u>	
<u>Geyman</u>		<u>Barbour</u>	

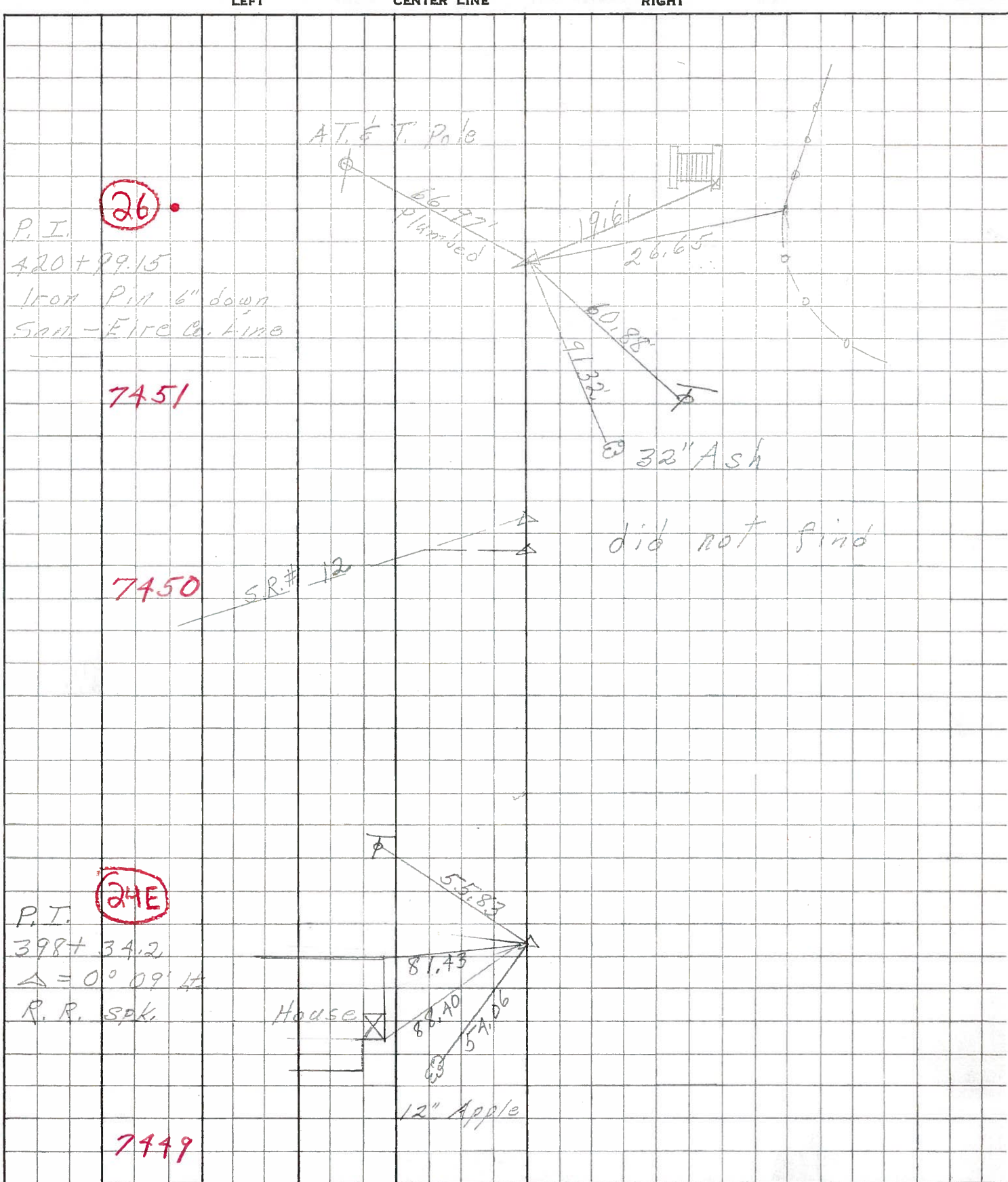
COUNTY Sandusky DATE 11/16/76
 S. R. #101 WEATHER sunny
 SEC. San. 101-(3.88-11.90) TEMP. _____

DESCRIPTION Ties for Control Points JOB NO. _____
 LEFT CENTER LINE RIGHT



PERSONNEL	TITLE	PERSONNEL	TITLE	COUNTY	DATE	WEATHER	TEMP.
Schneider		Potts		Sandusky	4-16-68	Fair	60°
Mosser				S. R. 101			
Barbour				SEC. N.E. of Clyde			
Redding							

DESCRIPTION: Ties for Control Points



PERSONNEL	TITLE	PERSONNEL	TITLE
KRABILL			
KOWALESKI			
Geyman			
Bruggeman			

COUNTY Sandusky Ky DATE Feb. 2, 1964
 S. R. #101 WEATHER _____
 SEC. _____ TEMP. _____

DESCRIPTION U.S. #20 North to Erie Co. Line JOB NO. _____

