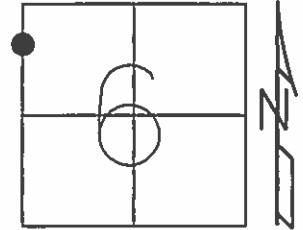


O.D.O.T. DISTRICT 2 SURVEY OFFICE (USE ONLY)

PERSONNEL	REFERENCE NO. <u>0</u>	SHEET <u>1</u> OF <u>13</u>
NOTES <u>STONE</u>	DATE <u>3/12/74</u>	ROUTE <u>SR 105</u>
H.C. <u>DENNO</u>	WEATHER <u>COLD</u>	COUNTY <u>SANDUSKY</u>
R.C. <u>CURTIS</u>	TEMP. <u>34°</u>	TOWNSHIP <u>WOODVILLE</u>
		SECTION <u>6</u>
		T <u>6</u> N R <u>13</u> E

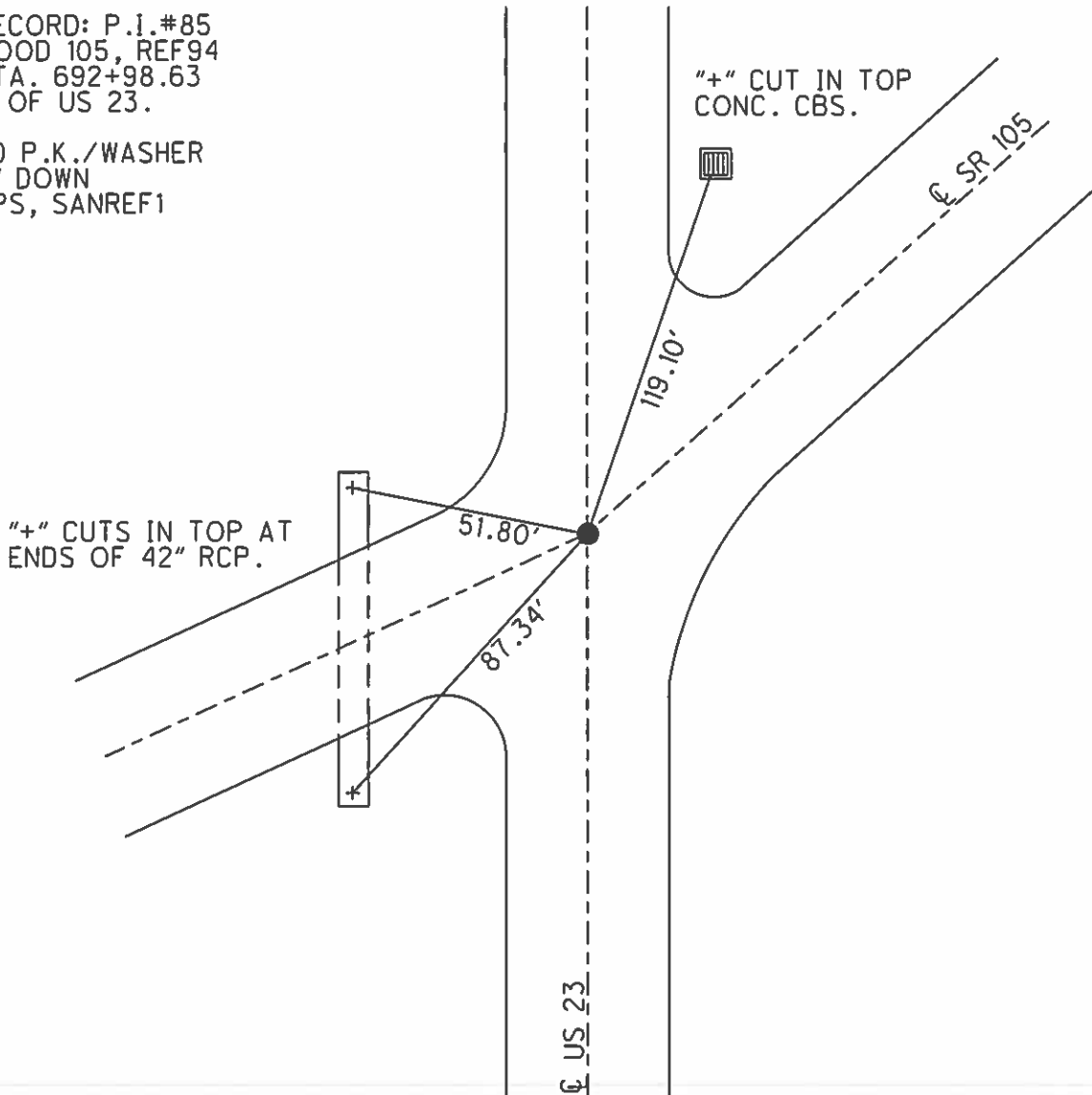
TYPE MONUMENT R.R.SPIKE
 ON SURFACE - BELOW -
 LEFT - ☉ PAV'T - RIGHT -
- TO - EDGE PAVEMENT
 S.L.M. 0+00



Grid: Northing: 642375.3704 Easting: 1717446.2750

RECORD: P.I.#85
 WOOD 105, REF94
 STA. 692+98.63
 ☉ OF US 23.

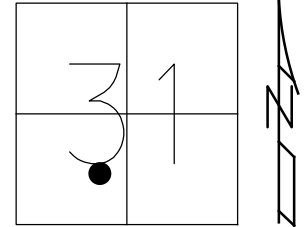
FD P.K./WASHER
 3" DOWN
 GPS, SANREF1



O.D.O.T. DISTRICT 2 SURVEY OFFICE (USE ONLY)

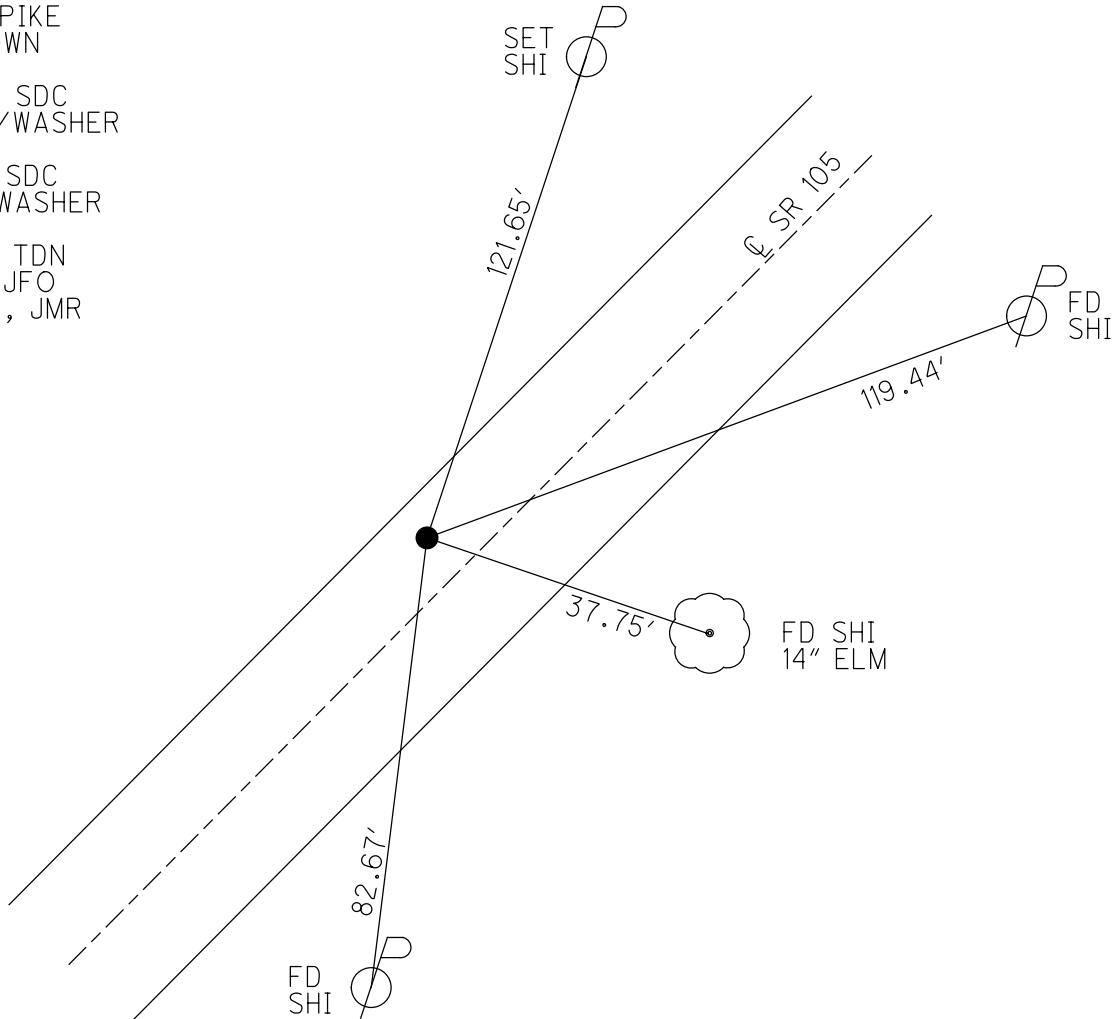
PERSONNEL _____ REFERENCE NO. 1 SHEET 2 OF 13
 NOTES MILLER DATE 12/28/23 ROUTE SR 105
 H.C. RHOADES WEATHER RAIN COUNTY SANDUSKY
 R.C. MILLER TEMP. 44° TOWNSHIP WOODVILLE
 DWG BY RHOADES PID PAVING TRAIN SECTION 31
 T 6 N R 13 E

TYPE MONUMENT MAG/WASHER
 ON SURFACE - ~~BELOW~~ ON _____
 OFFSET \odot PAVEMENT 5' LT : ~~RT~~
15.5' TO RT EDGE PAVEMENT
 STATION: 25+41.5



HORZ. DATUM: NAD83 2011 GEOID: NAVD88 2018
 GRID: NORTHING: 644095.962 EASTING: 1719313.962

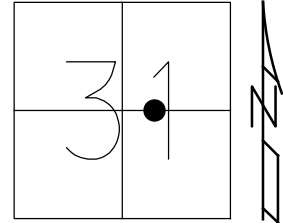
RECORD: P.I.
 $\Delta = 6^{\circ}06'$ RT
 FD R.R. SPIKE
 1 1/2" DOWN
 SANREF2
 4/30/13, SDC
 SET MAG/WASHER
 FINREF1
 5/31/13, SDC
 FD MAG/WASHER
 REF1
 5/25/21, TDN
 4/7/22, JFO
 12/28/23, JMR



O.D.O.T. DISTRICT 2 SURVEY OFFICE (USE ONLY)

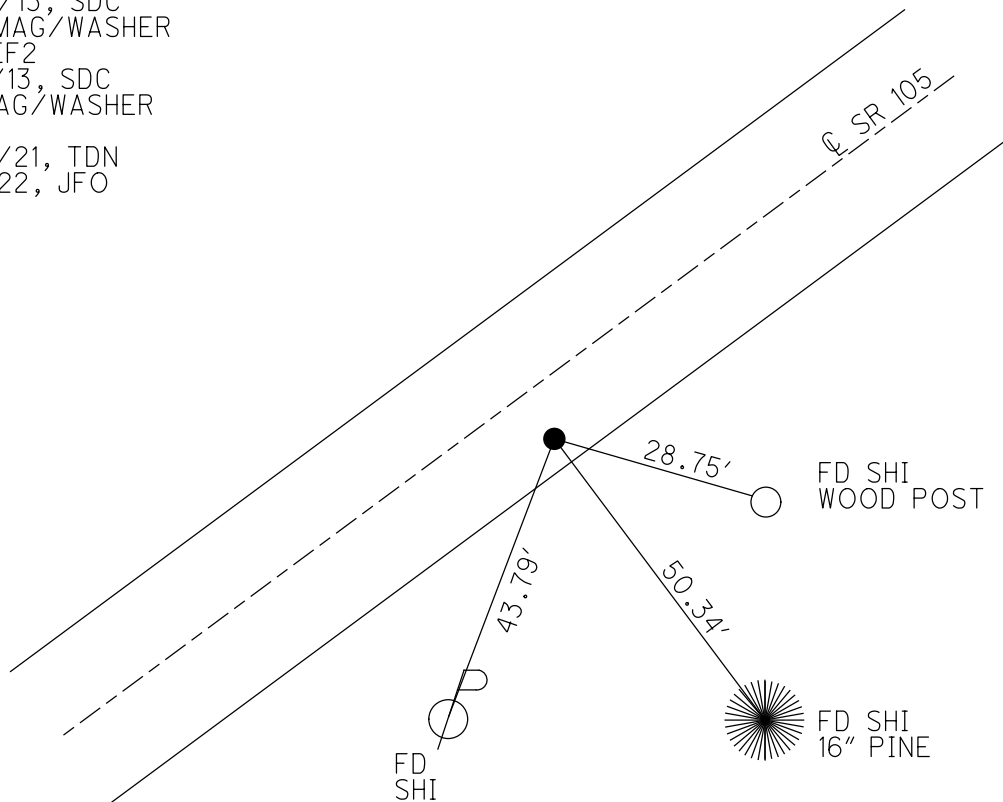
PERSONNEL _____ REFERENCE NO. 2 SHEET 3 OF 13
 NOTES RHOADES DATE 5/25/21 ROUTE SR 105
 H.C. NIESE WEATHER FAIR COUNTY SANDUSKY
 R.C. RHOADES TEMP. 77° TOWNSHIP WOODVILLE
 DWG BY RHOADES PID PVTRAIN SECTION 31
 T 6 N R 13 E

TYPE MONUMENT MAG/WASHER
 ON SURFACE - ~~BELOW~~ ON
 OFFSET \varnothing PAVEMENT 7.5' ~~LT~~ : RT
2.5' TO RT EDGE PAVEMENT
 STATION: 43+75



HORIZ.DATUM: NAD83 2011 GEOID: NAVD88 2018
 GRID: NORTHING: 645183.422 EASTING: 1720796.702

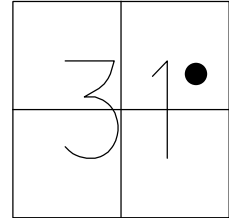
RECORD: P.I.
 $\Delta = 6^{\circ}20' \text{ LT}$
 FD P.K./WASHER
 0.1" DOWN
 SANREF3
 4/30/13, SDC
 SET MAG/WASHER
 FINREF2
 5/31/13, SDC
 FD MAG/WASHER
 REF2
 5/25/21, TDN
 4/7/22, JFO



O.D.O.T. DISTRICT 2 SURVEY OFFICE (USE ONLY)

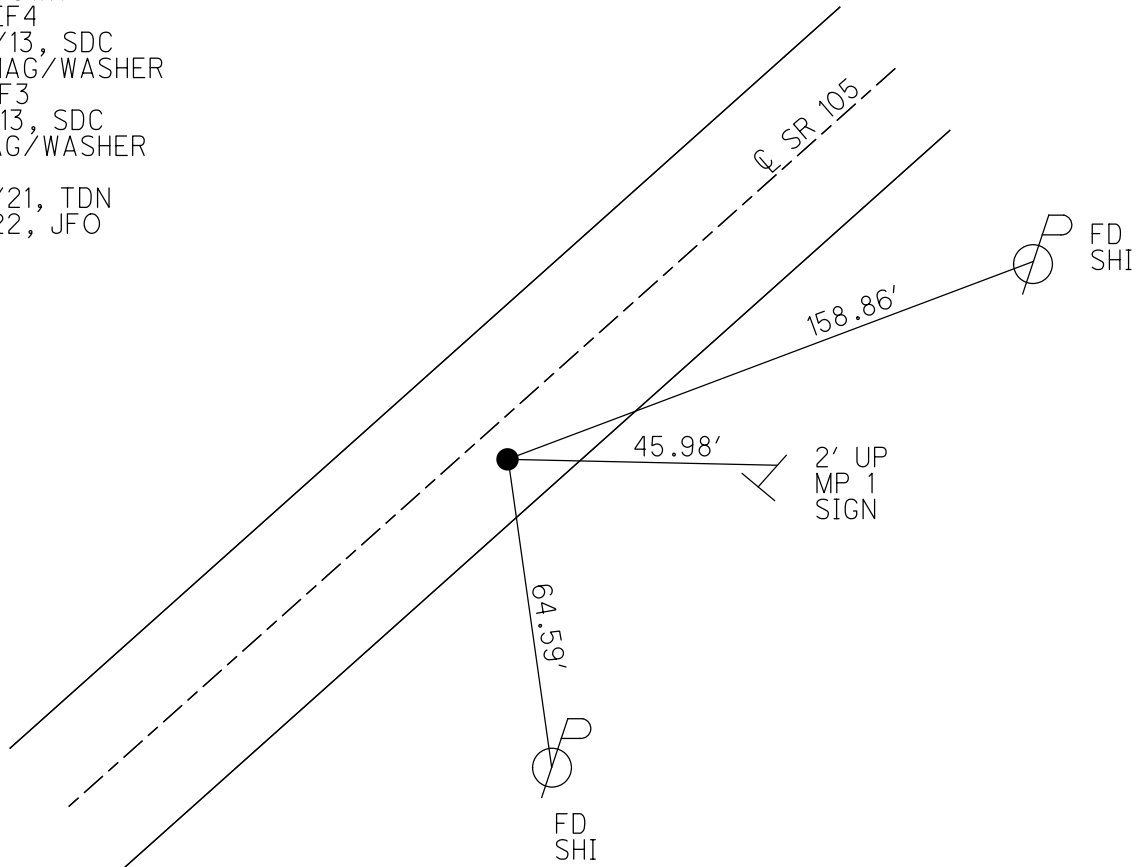
PERSONNEL _____ REFERENCE NO. 3 SHEET 4 OF 13
 NOTES RHOADES DATE 5/25/21 ROUTE SR 105
 H.C. NIESE WEATHER FAIR COUNTY SANDUSKY
 R.C. RHOADES TEMP. 79° TOWNSHIP WOODVILLE
 _____ SECTION 31
 DWG BY RHOADES PID PVTRAIN T 6 N R 13 E

TYPE MONUMENT MAG/WASHER
 ON SURFACE - ~~BELOW~~ ON _____
 OFFSET \varnothing PAVEMENT 3.7' ~~LT~~ : RT
6.5' TO RT EDGE PAVEMENT
 STATION: 52+21.4



HORIZ.DATUM: NAD83 2011 GEOID: NAVD88 2018
 GRID: NORTHING: 645759.194 EASTING: 1721418.144

RECORD:
 FD P.K./WASHER
 0.2' DOWN
 SANREF4
 4/30/13, SDC
 SET MAG/WASHER
 FINREF3
 5/31/13, SDC
 FD MAG/WASHER
 REF3
 5/25/21, TDN
 4/7/22, JFO



O.D.O.T. DISTRICT 2 SURVEY OFFICE (USE ONLY)

PERSONNEL

REFERENCE NO. 4

SHEET 5 OF 13

NOTES RHOADES

DATE 5/25/21

ROUTE SR 105

H.C. NIESE

WEATHER FAIR

COUNTY SANDUSKY

R.C. RHOADES

TEMP. 79°

TOWNSHIP WOODVILLE

SECTION 31

DWG BY RHOADES

PID PVTRAIN

T 6 N R 13 E

TYPE MONUMENT P.K./WASHER

ON SURFACE - ~~BELOW~~ ON

OFFSET Q PAVEMENT 2.5' ~~ET~~ : RT

7.7' TO RT EDGE PAVEMENT

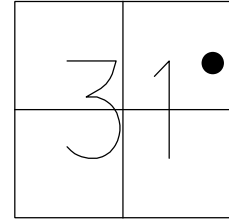
STATION: 69+39.5

HORIZ.DATUM: NAD83 2011

GEOID: NAVD88 2018

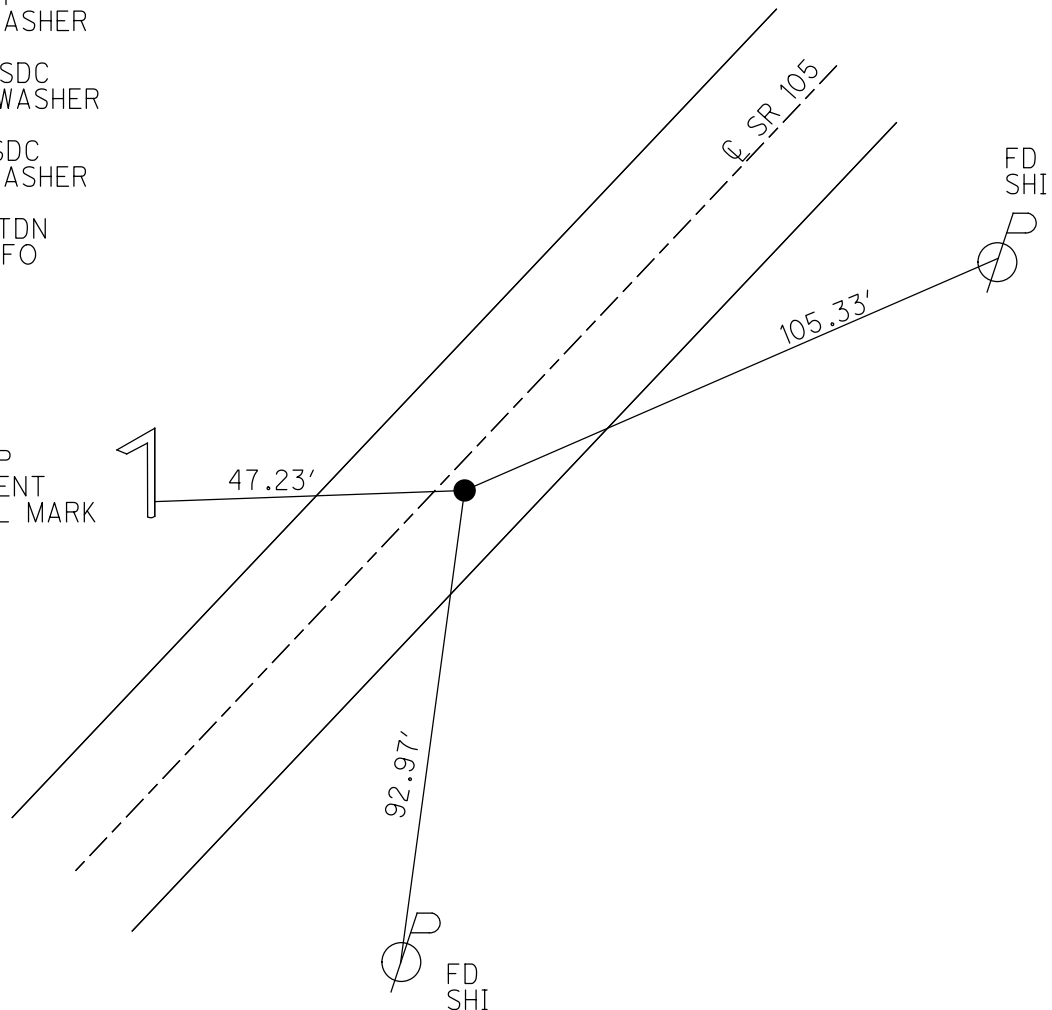
GRID: NORTHING: 646985.189

EASTING: 1722625.766



RECORD: P.I.
 $\Delta = 1^{\circ}10'$ RT
 FD P.K./WASHER
 SANREF5
 4/30/13, SDC
 SET MAG/WASHER
 FINREF4
 5/31/13, SDC
 FD P.K./WASHER
 REF4
 5/25/21, TDN
 4/7/22, JFO

1.2' UP
 G.L. VENT
 CHISEL MARK



O.D.O.T. DISTRICT 2 SURVEY OFFICE (USE ONLY)

PERSONNEL

REFERENCE NO. 5

SHEET 6 OF 13

NOTES RHOADES

DATE 5/25/21

ROUTE SR 105

H.C. NIESE

WEATHER FAIR

COUNTY SANDUSKY

R.C. RHOADES

TEMP. 77°

TOWNSHIP WOODVILLE

SECTION 32

DWG BY RHOADES

PID PVTRAIN

T 6 N R 13 E

TYPE MONUMENT MAG/WASHER

ON SURFACE - ~~BELOW~~ ON

OFFSET Q PAVEMENT 2.5' LT : ~~RT~~

13.5' TO RT EDGE PAVEMENT

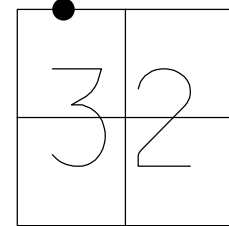
STATION: 84+67

HORZ. DATUM: NAD83 2011

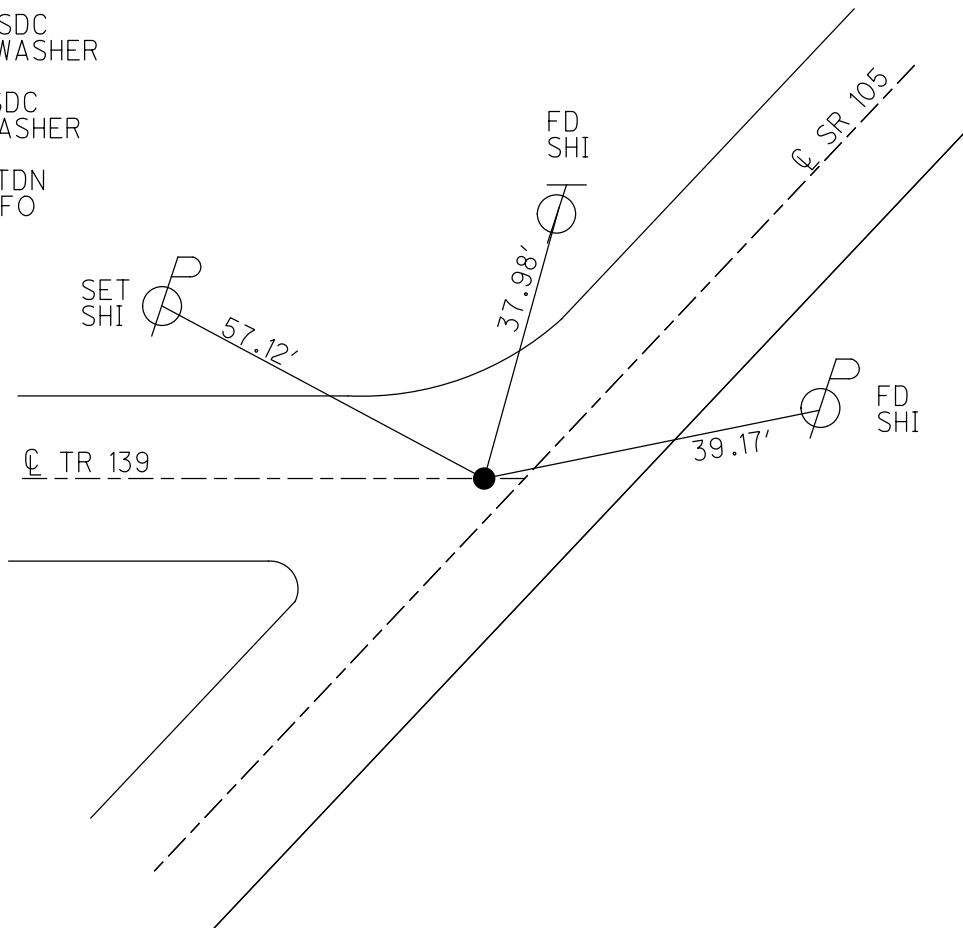
GEOID: NAVD88 2018

GRID: NORTHING: 648050.261

EASTING: 1723720.216



RECORD:
 FD P.K./WASHER
 0.2' DOWN
 SANREF6
 4/30/13, SDC
 SET MAG/WASHER
 FINREF5
 5/31/13, SDC
 FD MAG/WASHER
 REF5
 5/25/21, TDN
 4/7/22, JFO



O.D.O.T. DISTRICT 2 SURVEY OFFICE (USE ONLY)

PERSONNEL

REFERENCE NO. 6

SHEET 7 OF 13

NOTES RHOADES
H.C. NIESE
R.C. RHOADES

DATE 5/25/21
WEATHER FAIR
TEMP. 82°

ROUTE SR 105
COUNTY SANDUSKY
TOWNSHIP WOODVILLE
SECTION 29
T 6 N R 13 E

DWG BY RHOADES PID PVTRAIN

TYPE MONUMENT MAG/WASHER

ON SURFACE - ~~BELOW~~ ON

OFFSET 0.8' ~~LT~~ : RT
10' TO RT EDGE PAVEMENT

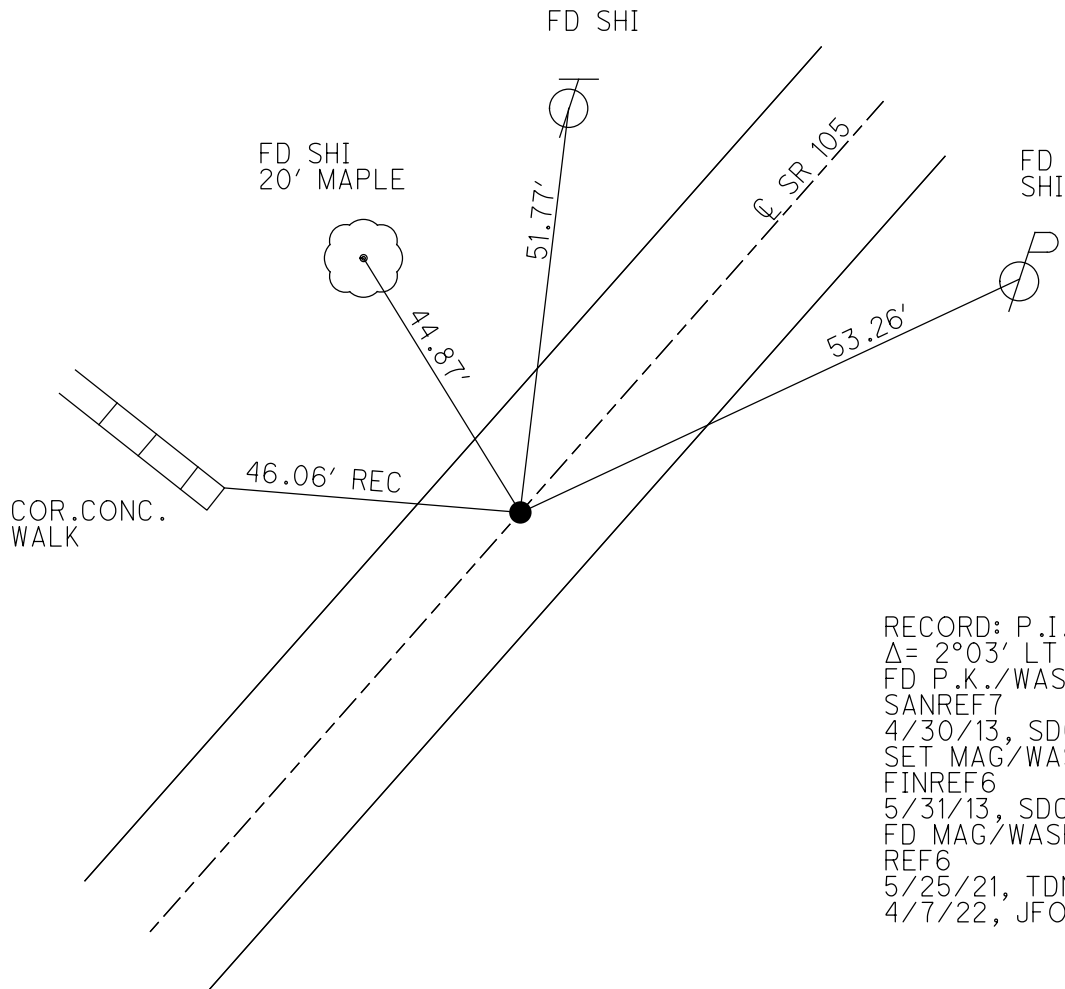
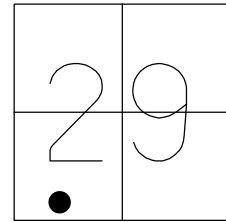
STATION: 87+49.5

HORIZ.DATUM: NAD83 2011

GEOID: NAVD88 2018

GRID: NORTHING: 648248.103

EASTING: 1723921.678

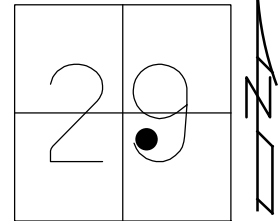


RECORD: P.I.
 $\Delta = 2^{\circ}03'$ LT
FD P.K./WASHER
SANREF7
4/30/13, SDC
SET MAG/WASHER
FINREF6
5/31/13, SDC
FD MAG/WASHER
REF6
5/25/21, TDN
4/7/22, JFO

O.D.O.T. DISTRICT 2 SURVEY OFFICE (USE ONLY)

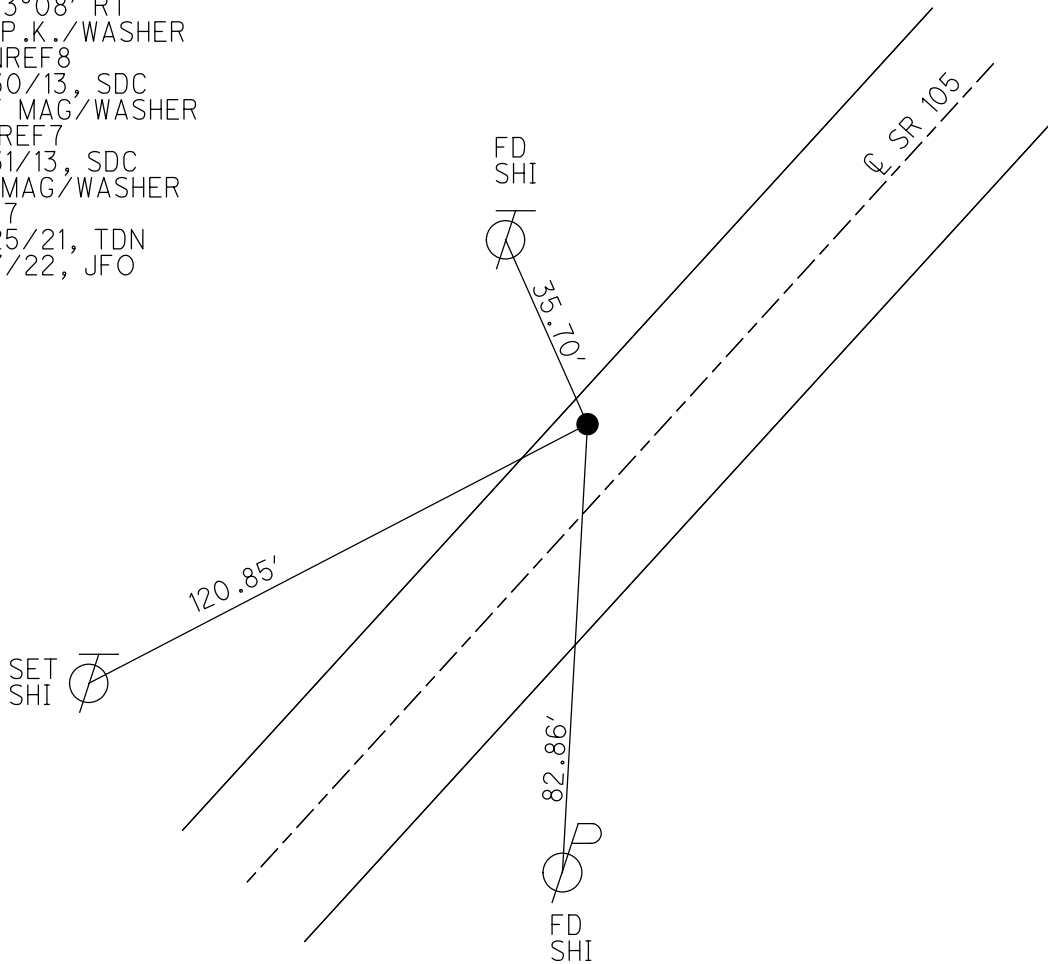
PERSONNEL _____ REFERENCE NO. 7 SHEET 8 OF 13
 NOTES RHOADES DATE 5/25/21 ROUTE SR 105
 H.C. NIESE WEATHER FAIR COUNTY SANDUSKY
 R.C. RHOADES TEMP. 77° TOWNSHIP WOODVILLE
 SECTION 29
 DWG BY RHOADES PID PVTRAIN T 6 N R 13 E

TYPE MONUMENT MAG/WASHER
 ON SURFACE - ~~BELOW~~ ON
 OFFSET ☑ PAVEMENT 7' LT : ~~RT~~
3' TO LT EDGE PAVEMENT
 STATION: 108+11.6



HORZ. DATUM: NAD83 2011 GEOID: NAVD88 2018
 GRID: NORTHING: 649738.715 EASTING: 1725645.575

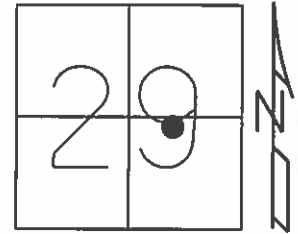
RECORD: P.I.
 $\Delta = 3^{\circ}08'$ RT
 FD P.K./WASHER
 SANREF8
 4/30/13, SDC
 SET MAG/WASHER
 FINREF7
 5/31/13, SDC
 FD MAG/WASHER
 REF7
 5/25/21, TDN
 4/7/22, JFO



O.D.O.T. DISTRICT 2 SURVEY OFFICE (USE ONLY)

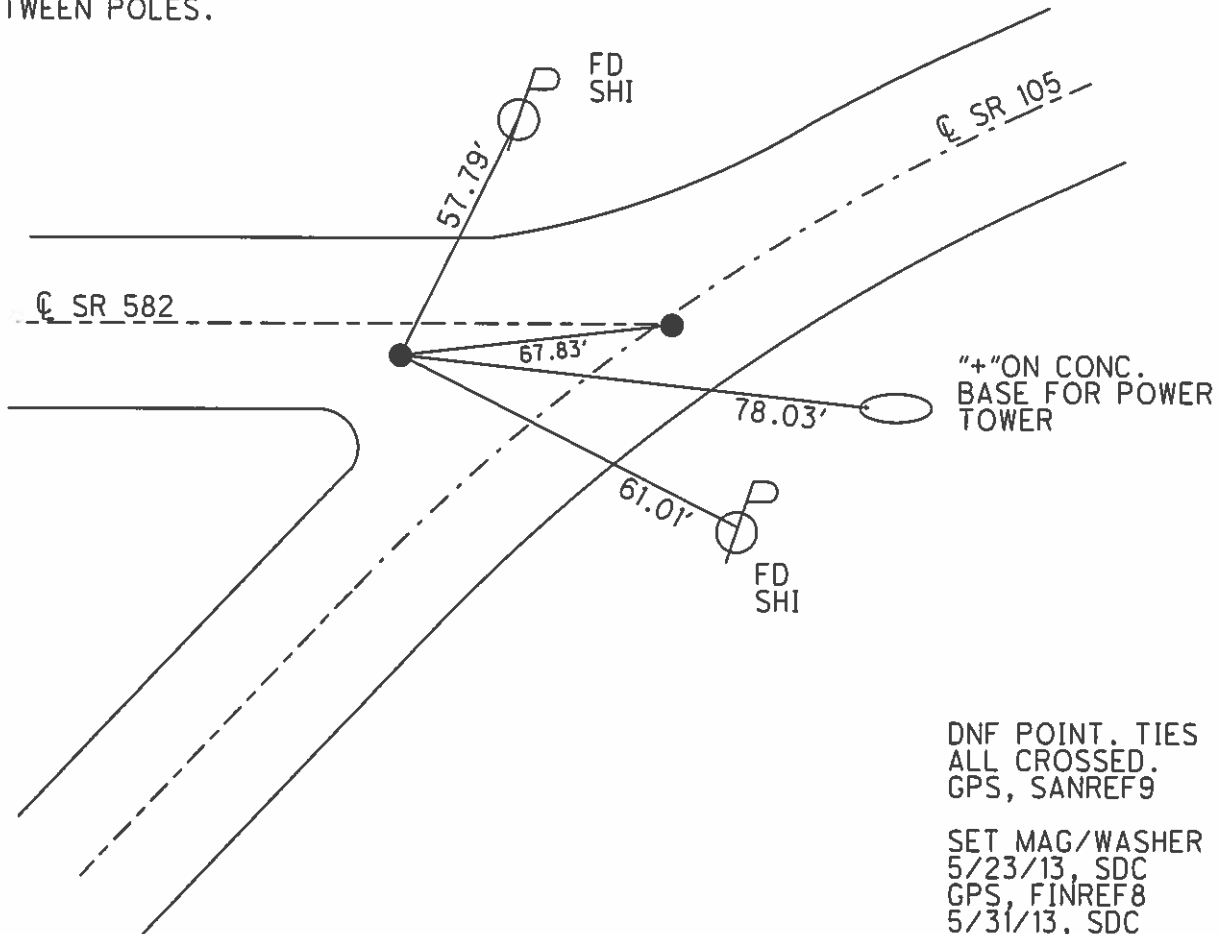
PERSONNEL	REFERENCE NO. <u>8</u>	SHEET <u>9</u> OF <u>13</u>
NOTES <u>RHOADES</u>	DATE <u>4/30/13</u>	ROUTE <u>SR 105</u>
H.C. <u>CODER</u>	WEATHER <u>CLEAR</u>	COUNTY <u>SANDUSKY</u>
R.C. <u>LAU</u>	TEMP. <u>51°</u>	TOWNSHIP <u>WOODVILLE</u>
		SECTION <u>29</u>
		T <u>6</u> N R <u>13</u> E

TYPE MONUMENT DNF POINT
 ON SURFACE - BELOW -
 LEFT - Q PAV'T - ~~RIGHT~~ 25'
10'LT TO LT EDGE PAVEMENT
 S.L.M. 123+47



Grid: Northing: 650804.949 Easting: 1726449.901

RECORD: P.I.
 FD IPIN 5" BELOW SURFACE.
 APPEARS TO BE MIX UP IN STATIONS.
 USED SWING TIES FROM POLES
 SHOWN IN SAN.CO.MON.TIES BOOK#1.
 FD THIS IPIN POINT RESET FROM SAME
 BOOK STA.125+06.90 DOES NOT COME
 BETWEEN POLES.

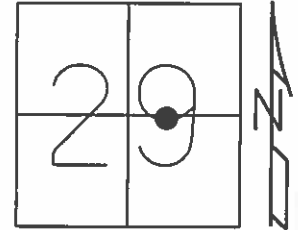


DNF POINT. TIES
 ALL CROSSED.
 GPS, SANREF9
 SET MAG/WASHER
 5/23/13, SDC
 GPS, FINREF8
 5/31/13, SDC

O.D.O.T. DISTRICT 2 SURVEY OFFICE (USE ONLY)

PERSONNEL	REFERENCE NO. <u>8 A</u>	SHEET <u>10</u> OF <u>13</u>
NOTES <u>RHOADES</u>	DATE <u>4/30/13</u>	ROUTE <u>SR 105</u>
H.C. <u>CODER</u>	WEATHER <u>CLEAR</u>	COUNTY <u>SANDUSKY</u>
R.C. <u>LAU</u>	TEMP. <u>51°</u>	TOWNSHIP <u>WOODVILLE</u>
		SECTION <u>29</u>
		T <u>6</u> N R <u>13</u> E

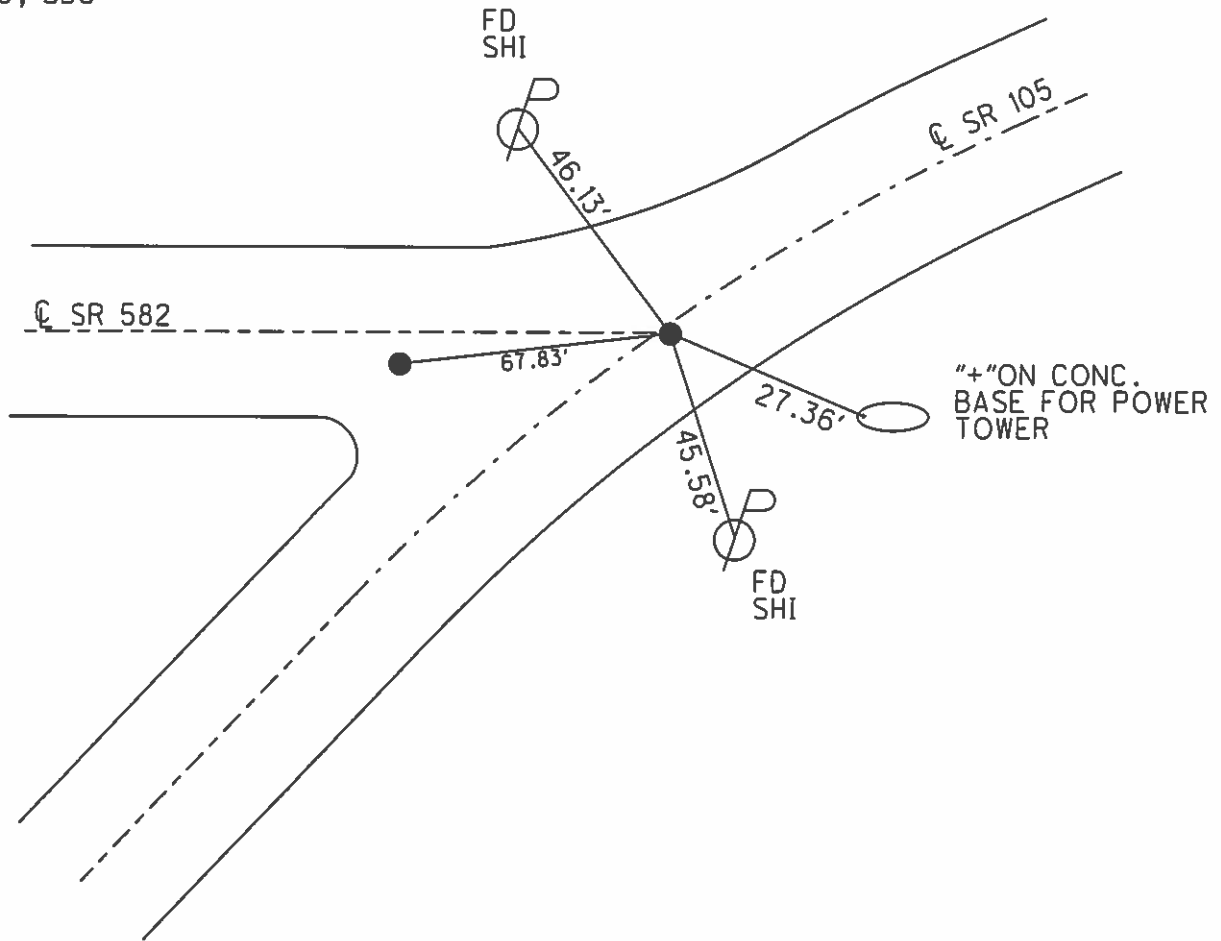
TYPE MONUMENT P.K./WASHER
~~ON SURFACE~~ - BELOW 1"
~~LEFT~~ - Q PAV'T - RIGHT 1"
- TO - EDGE PAVEMENT
 S.L.M. 124+12



Grid: Northing: 650819.012 Easting: 1726516.21

FD P.K. 0.1' DOWN
GPS, SANREF10

SET MAG/WASHER
GPS, FINREFA8
5/31/13, SDC



O.D.O.T. DISTRICT 2 SURVEY OFFICE (USE ONLY)

PERSONNEL

REFERENCE NO. 9

SHEET 11 OF 13

NOTES CHENEY

DATE 11/13/91

ROUTE SR 105

H.C. BARBOUR

WEATHER CLOUDY

COUNTY SANDUSKY

R.C. RIPPLE

TEMP. 45°

TOWNSHIP WOODVILLE

GEYMAN

SECTION 29

T 6 N R 13 E

TYPE MONUMENT 5/8" IPIN

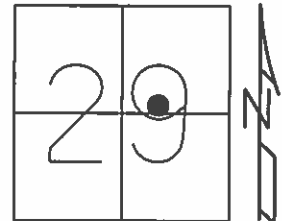
~~ON SURFACE~~ - BELOW 1.0'

LEFT - CL PAV'T - ~~RIGHT~~ 40.5'

30' TO LT. EDGE PAVEMENT

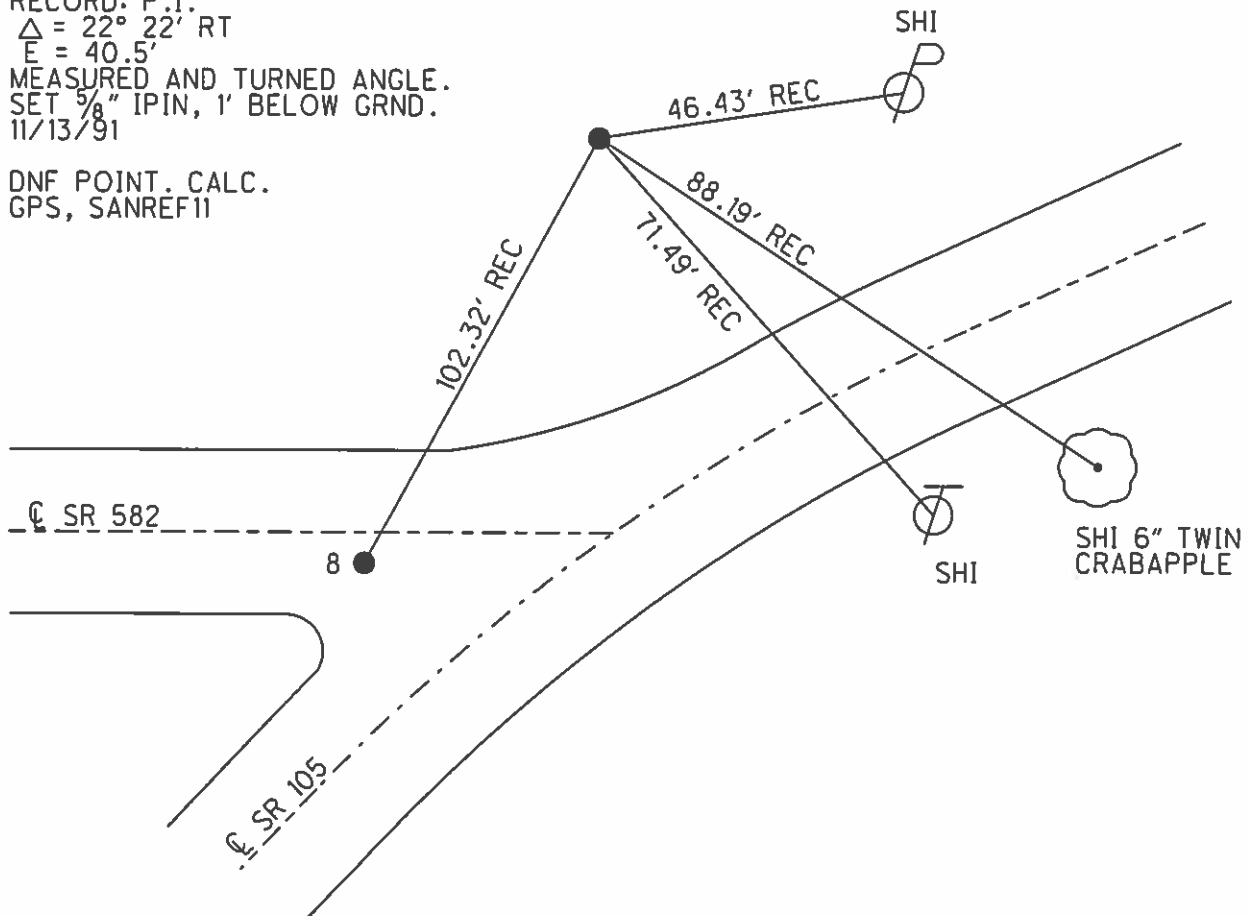
S.L.M. 125+06.9

Grid: Northing: 650875.9006 Easting: 1726523.5442



RECORD: P.I.
 $\Delta = 22^\circ 22' \text{ RT}$
 $E = 40.5'$
 MEASURED AND TURNED ANGLE.
 SET 5/8" IPIN, 1' BELOW GRND.
 11/13/91

DNF POINT. CALC.
 GPS, SANREF11



O.D.O.T. DISTRICT 2 SURVEY OFFICE (USE ONLY)

PERSONNEL

REFERENCE NO. 10

SHEET 12 OF 13

NOTES MILLER

DATE 12/28/23

ROUTE SR 105

H.C. RHOADES

WEATHER RAIN

COUNTY SANDUSKY

R.C. MILLER

TEMP. 44°

TOWNSHIP WOODVILLE

SECTION 29

DWG BY RHOADES PID PAVING TRAIN

T 6 N R 13 E

TYPE MONUMENT MAG/WASHER

ON SURFACE - ~~BELOW~~ ON

OFFSET CL PAVEMENT 4' LT : ~~RT~~

6.5' TO LT EDGE PAVEMENT

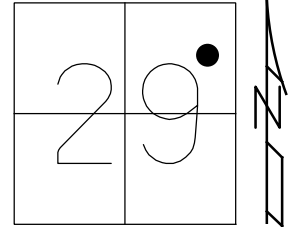
STATION: 131+87.3

HORZ. DATUM: NAD83 2011

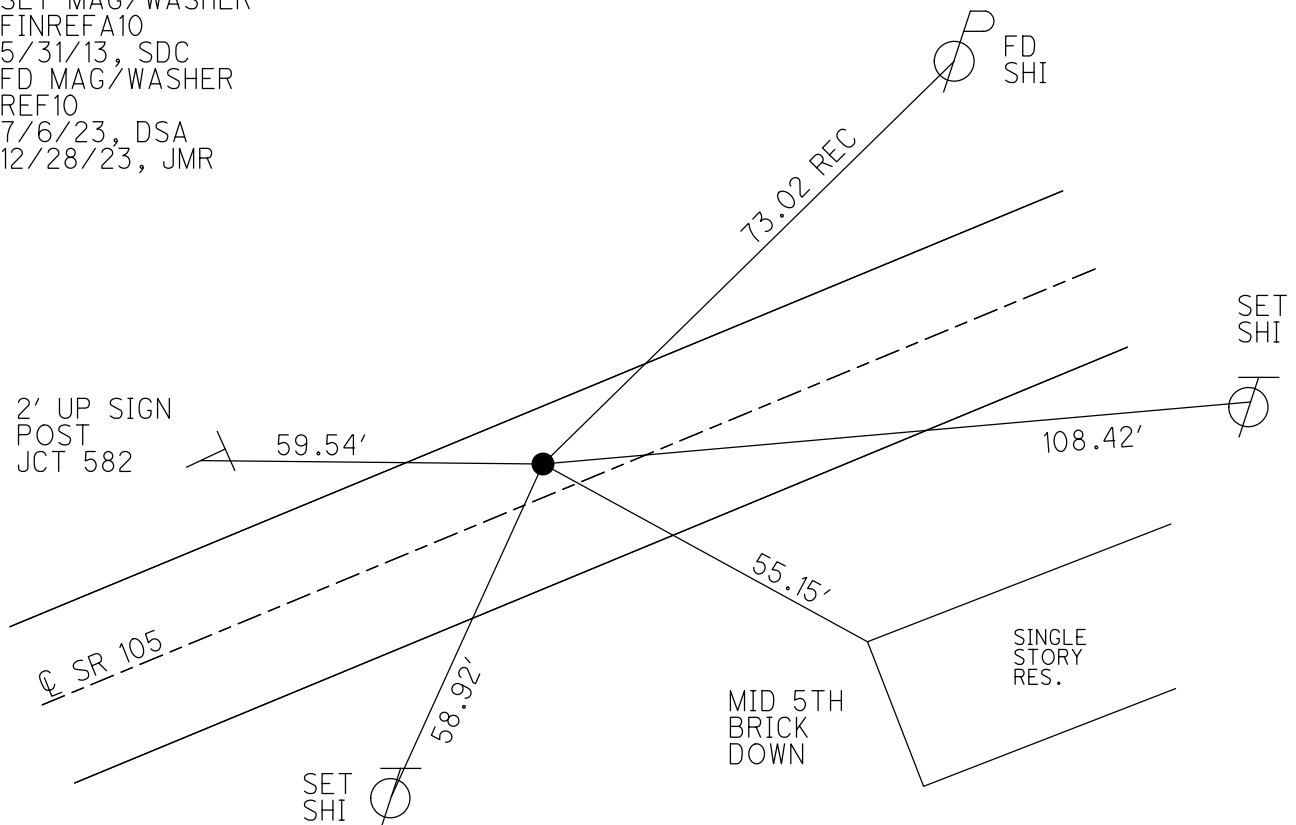
GEOID: NAVD88 2018

GRID: NORTHING: 651143.384

EASTING: 1727225.164



RECORD:
 FD R.R.SPIKE
 0.1' DOWN
 SANREF12
 SET MAG/WASHER
 FINREFA10
 5/31/13, SDC
 FD MAG/WASHER
 REF10
 7/6/23, DSA
 12/28/23, JMR



O.D.O.T. DISTRICT 2 SURVEY OFFICE (USE ONLY)

PERSONNEL

REFERENCE NO. 10 A

SHEET 13 OF 13

NOTES MILLER

DATE 12/28/23

ROUTE SR 105

H.C. RHOADES

WEATHER RAIN

COUNTY SANDUSKY

R.C. MILLER

TEMP. 44°

TOWNSHIP WOODVILLE

DWG BY RHOADES PID PAVING TRAIN

SECTION 29

T 6 N R 13 E

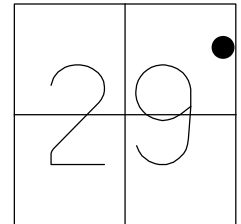
TYPE MONUMENT MAG/WASHER

ON SURFACE - ~~BELOW~~ ON

OFFSET 0.7' LT : ~~RT~~

- TO - EDGE PAVEMENT

STATION: 133+58.4



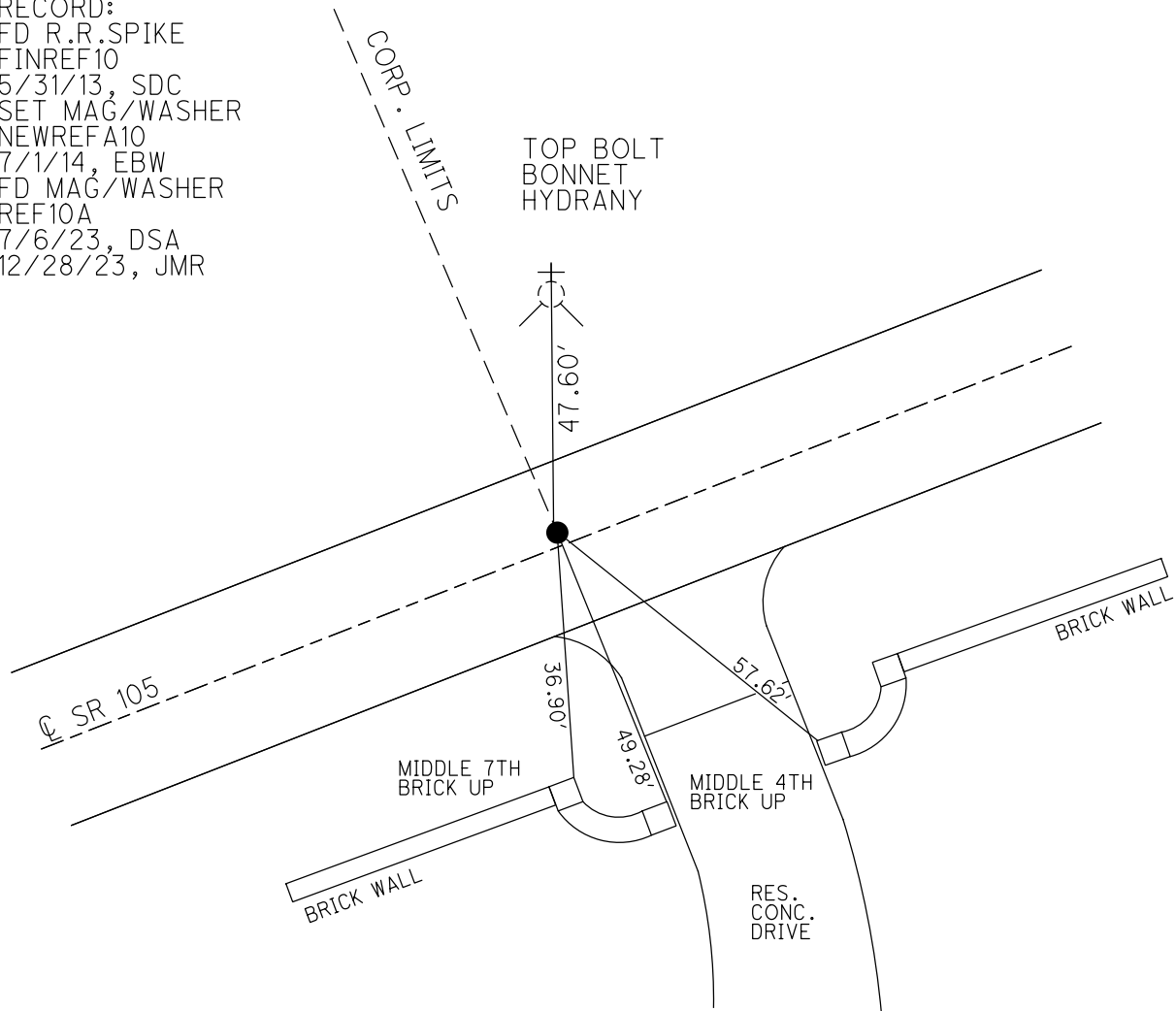
HORZ. DATUM: NAD83 2011

GEOID: NAVD88 2018

GRID: NORTHING: 651229.178

EASTING: 1727450.141

RECORD:
 FD R.R.SPIKE
 FINREF10
 5/31/13, SDC
 SET MAG/WASHER
 NEWREFA10
 7/1/14, EBW
 FD MAG/WASHER
 REF10A
 7/6/23, DSA
 12/28/23, JMR



O.D.O.T. DISTRICT 2 SURVEY OFFICE (USE ONLY)

PERSONNEL

REFERENCE NO. 10 B

SHEET 1 OF 7

NOTES MILLER

DATE 12/28/23

ROUTE SR 105

H.C. RHOADES

WEATHER RAIN

COUNTY SANDUSKY

R.C. MILLER

TEMP. 44°

TOWNSHIP WOODVILLE

SECTION 28

DWG BY RHOADES PID PAVING TRAIN

T 6 N R 13 E

TYPE MONUMENT 6" CMON, W/ 1 1/2" IPIN

ON SURFACE - ~~BELOW~~ ON

OFFSET CL PAVEMENT 3" LT : ~~RT~~

7.5' TO RT EDGE PAVEMENT

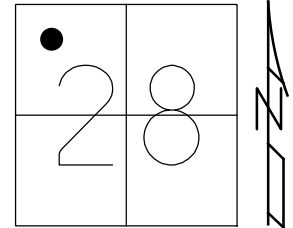
STATION: 138+63.4

HORIZ.DATUM: NAD83 2011

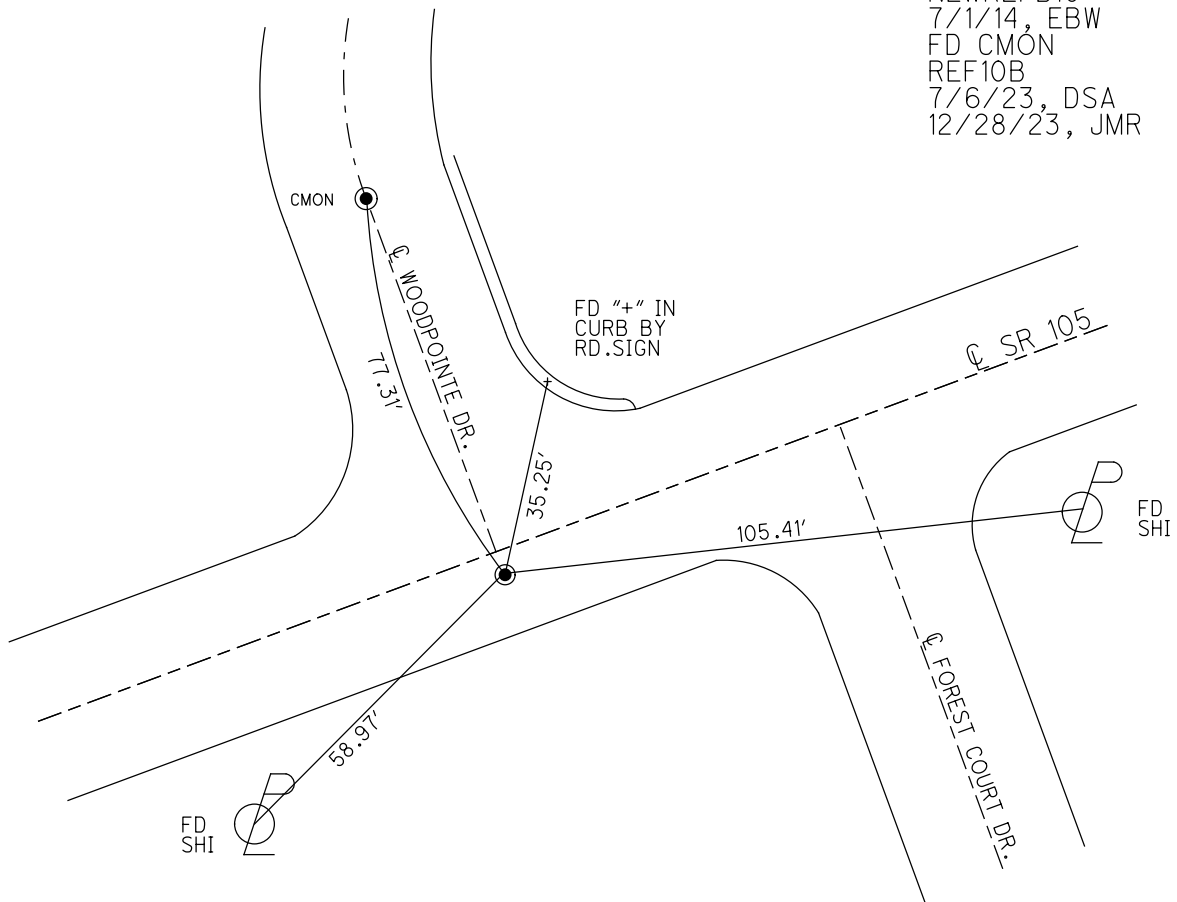
GEOID: NAVD88 2018

GRID: NORTHING: 651408.076

EASTING: 1727918.512



RECORD:
 POINT ORIGIN
 UNKNOWN
 FD CMON
 NEWREFB10
 7/1/14, EBW
 FD CMON
 REF10B
 7/6/23, DSA
 12/28/23, JMR



O.D.O.T. DISTRICT 2 SURVEY OFFICE (USE ONLY)

PERSONNEL _____

REFERENCE NO. 11

SHEET 3 OF 8

NOTES CHENEY

DATE 12/09/91

ROUTE SR 105

H.C. RIPPLE

WEATHER CLOUDY

COUNTY SANDUSKY

R.C. BARBOUR

TEMP. 45°

TOWNSHIP WOODVILLE

GEYMAN

SECTION 28

DWG BY NIESE PID _____

T 6 N R 13 E

TYPE MONUMENT NAIL/SHINER

ON SURFACE - ~~BELOW~~ ON

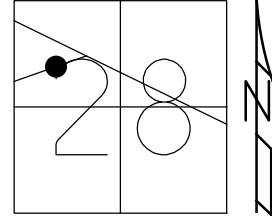
OFFSET 8.8' TO LT EDGE PAVEMENT

2.1' LT : ~~RT~~

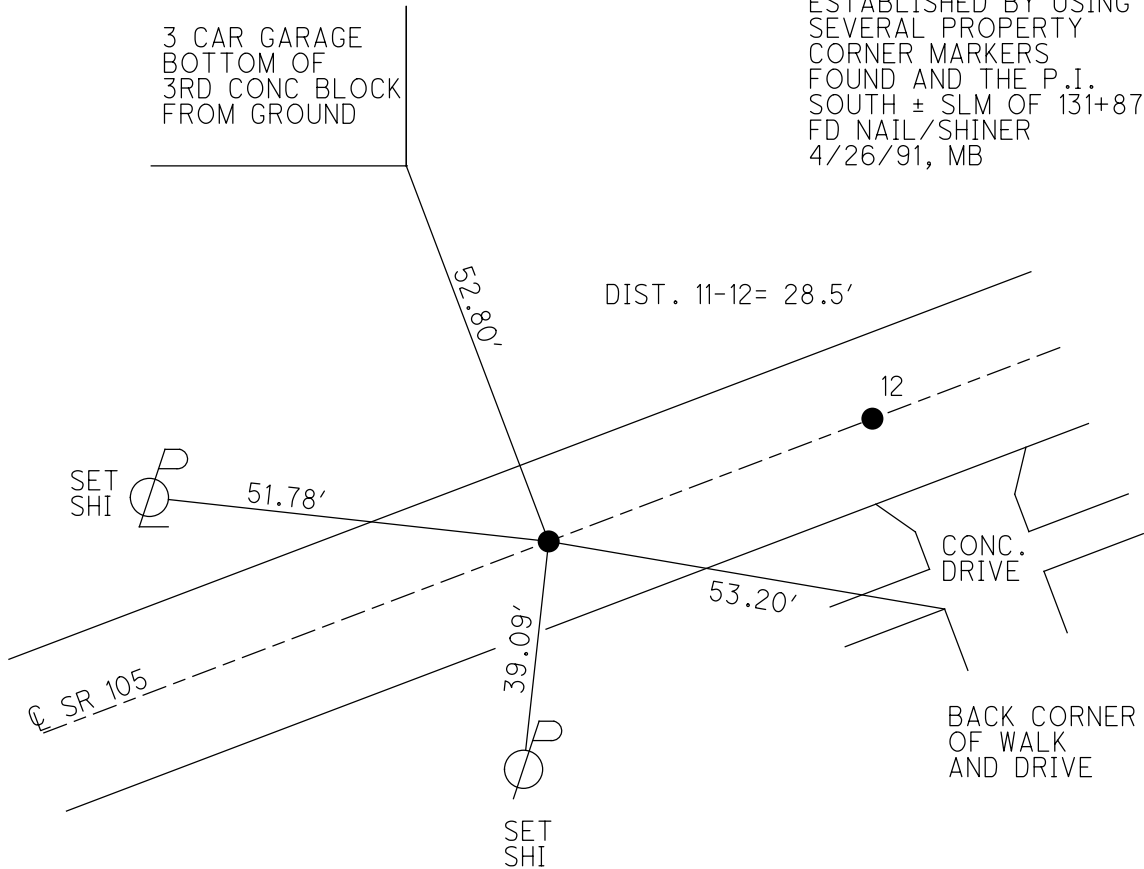
STATION: 158+00.00

HORIZ.DATUM: _____ GEOID: _____

GRID: NORTHING: _____ EASTING: _____



RECORD:
 C SURVEY ON SR 105
 ESTABLISHED BY USING
 SEVERAL PROPERTY
 CORNER MARKERS
 FOUND AND THE P.I.
 SOUTH ± SLM OF 131+87.3
 FD NAIL/SHINER
 4/26/91, MB



O.D.O.T. DISTRICT 2 SURVEY OFFICE (USE ONLY)

PERSONNEL

REFERENCE NO. 12

SHEET 4 OF 8

NOTES HOFFMAN

DATE 4/26/91

ROUTE SR 105

H.C. BARNHISEL

WEATHER OVERCAST

COUNTY SANDUSKY

R.C. BARBOUR

TEMP. 60°

TOWNSHIP WOODVILLE

GEYMAN

SECTION 28

DWG BY NIESE PID _____

T 6 N R 13 E

TYPE MONUMENT NAIL/SHINER

ON SURFACE - ~~BELOW~~ ON

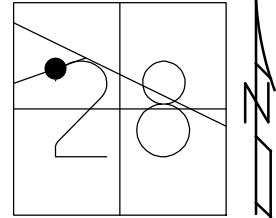
OFFSET C PAVEMENT 2.1' LT : ~~RT~~

8.8' TO LT EDGE PAVEMENT

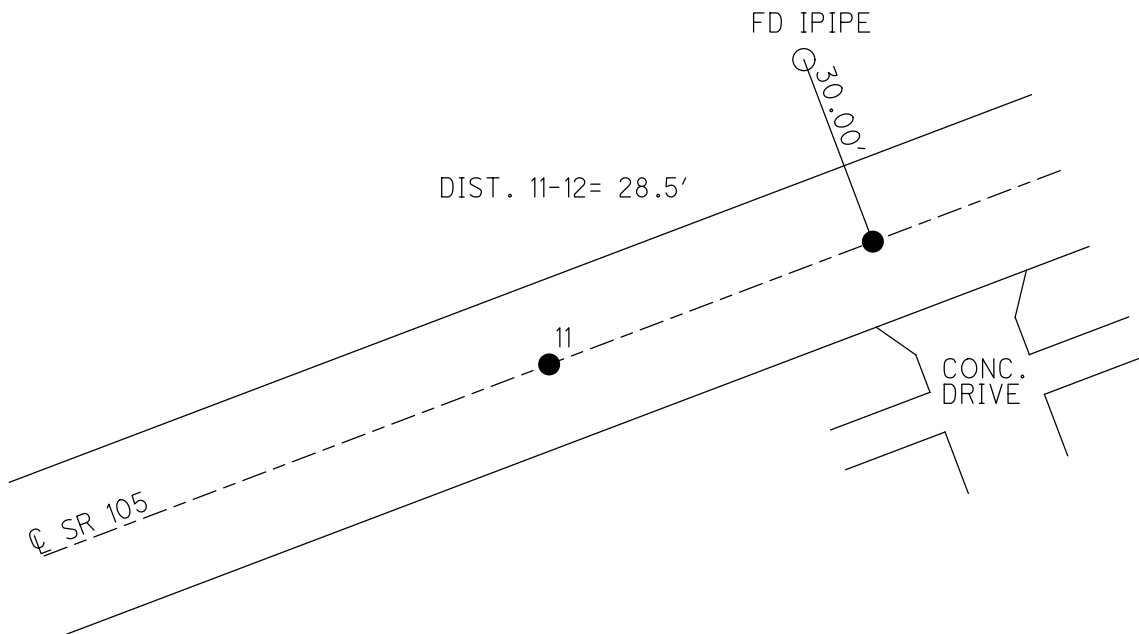
STATION: 158+28.5

HORZ.DATUM: _____ GEOID: _____

GRID: NORTHING: _____ EASTING: _____



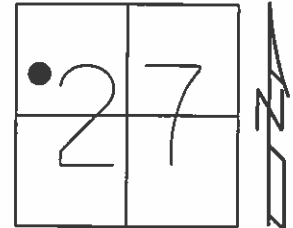
RECORD:
 FD NAIL/SHINER
 4/26/91, MB
 SET P.K./WASHER
 12/9/91, CH



O.D.O.T. DISTRICT 2 SURVEY OFFICE (USE ONLY)

PERSONNEL _____ REFERENCE NO. 13 SHEET 3 OF 6
 NOTES LEU DATE 5/2/14 ROUTE SR 105
 H.C. WESTFALL WEATHER CLOUDY COUNTY SANDUSKY
 R.C. RHOADES TEMP. 51° TOWNSHIP WOODVILLE
 _____ SECTION 27
 _____ T 6 N R 13 E

TYPE MONUMENT P.K./WASHER
~~ON SURFACE~~ - BELOW 1/2"
 LEFT - ☉ PAV'T - ~~RIGHT~~ 9.0'
4.6' TO LT EDGE CURB
 S.L.M. 212+18



Grid: Northing: 651631.278 Easting: 1734505.500

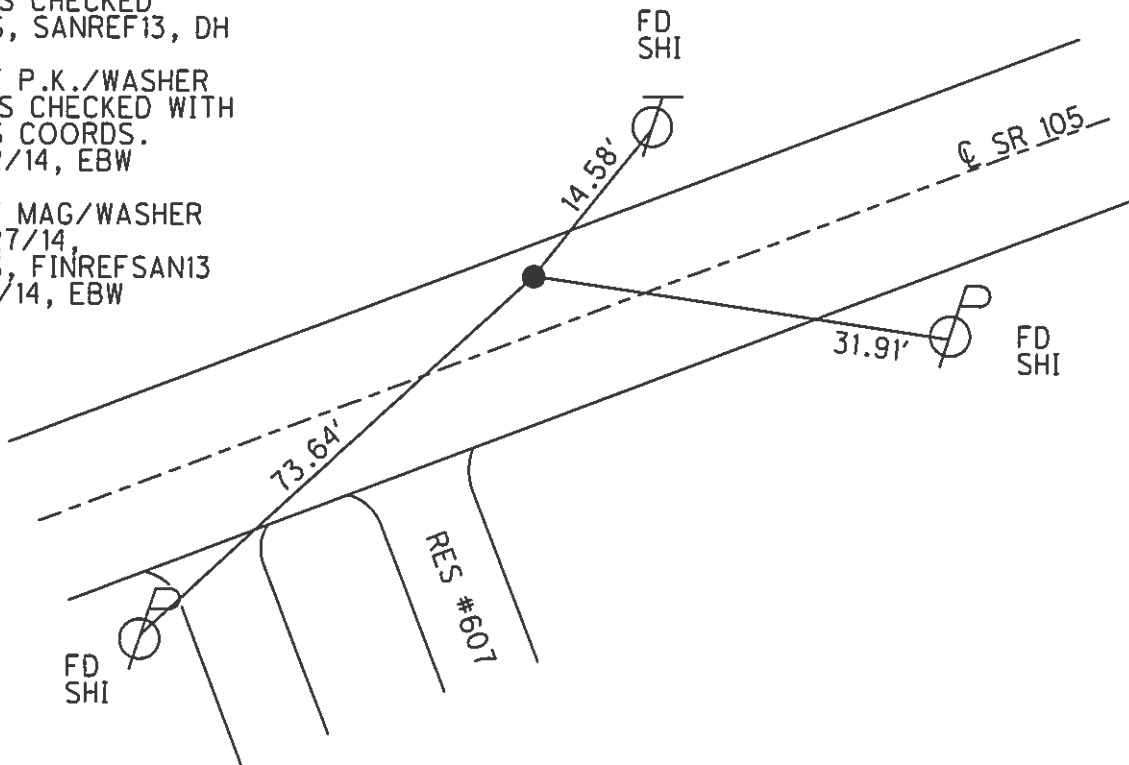
RECORD: 7/24/85
 P.K./WASHER ATOP
 SMALL SPIKE 1/2" BELOW
 P.I. STA. 211+73±

SET P.K./WASHER
 8/18/94, JLR

DNF P.K./WASHER
 TIES CHECKED
 GPS, SANREF13, DH

DNF P.K./WASHER
 TIES CHECKED WITH
 GPS COORDS.
 5/2/14, EBW

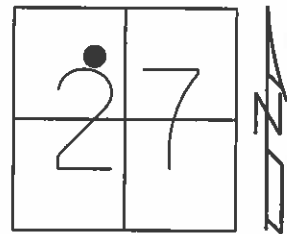
SET MAG/WASHER
 6/27/14,
 GPS, FINREFSAN13
 7/1/14, EBW



O.D.O.T. DISTRICT 2 SURVEY OFFICE (USE ONLY)

PERSONNEL _____ REFERENCE NO. 15 SHEET 4 OF 6
 NOTES LEU DATE 5/2/14 ROUTE SR 105
 H.C. WESTFALL WEATHER CLOUDY COUNTY SANDUSKY
 R.C. RHOADES TEMP. 51° TOWNSHIP WOODVILLE
 _____ SECTION 27
 _____ T 6 N R 13 E

TYPE MONUMENT P.K.
 ON SURFACE - ~~BELOW~~ ON _____
 LEFT - ☉ PAV'T - RIGHT ON _____
10' TO LT EDGE PAVEMENT
 S.L.M. 222+32



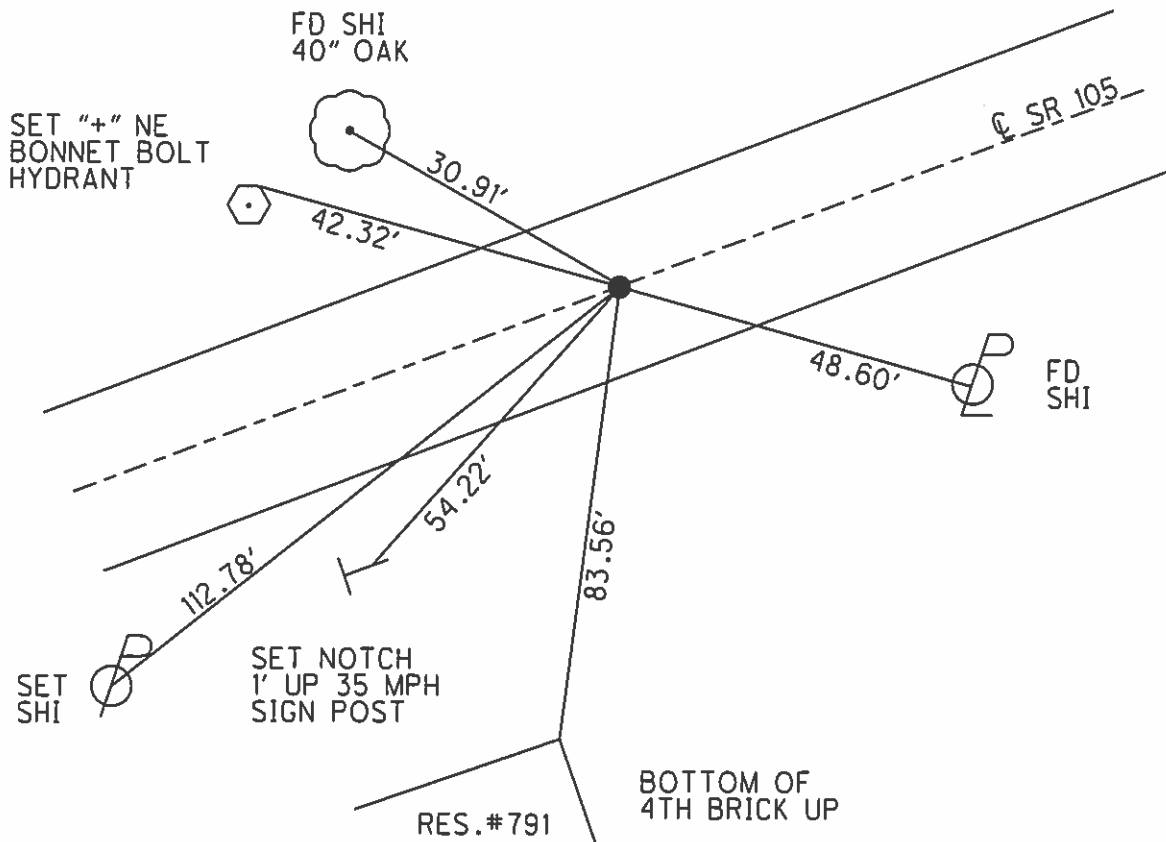
Grid: Northing: 651898.858 Easting: 1735483.047

RECORD: 7/24/85
 P.K./WASHER ON SURFACE
 ATOP P.K./WASHER ATOP P.K.
 P.O.T. STA. 221+76±

FD P.K.
 GPS, SANREF15
 DH

SET P.K./WASHER
 8/18/94, JLR

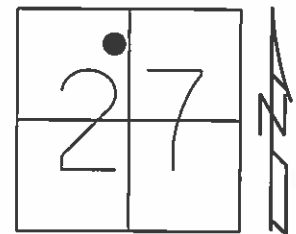
SET MAG/WASHER
 6/27/14,
 GPS, FINREFSAN15
 7/1/14, EBW



O.D.O.T. DISTRICT 2 SURVEY OFFICE (USE ONLY)

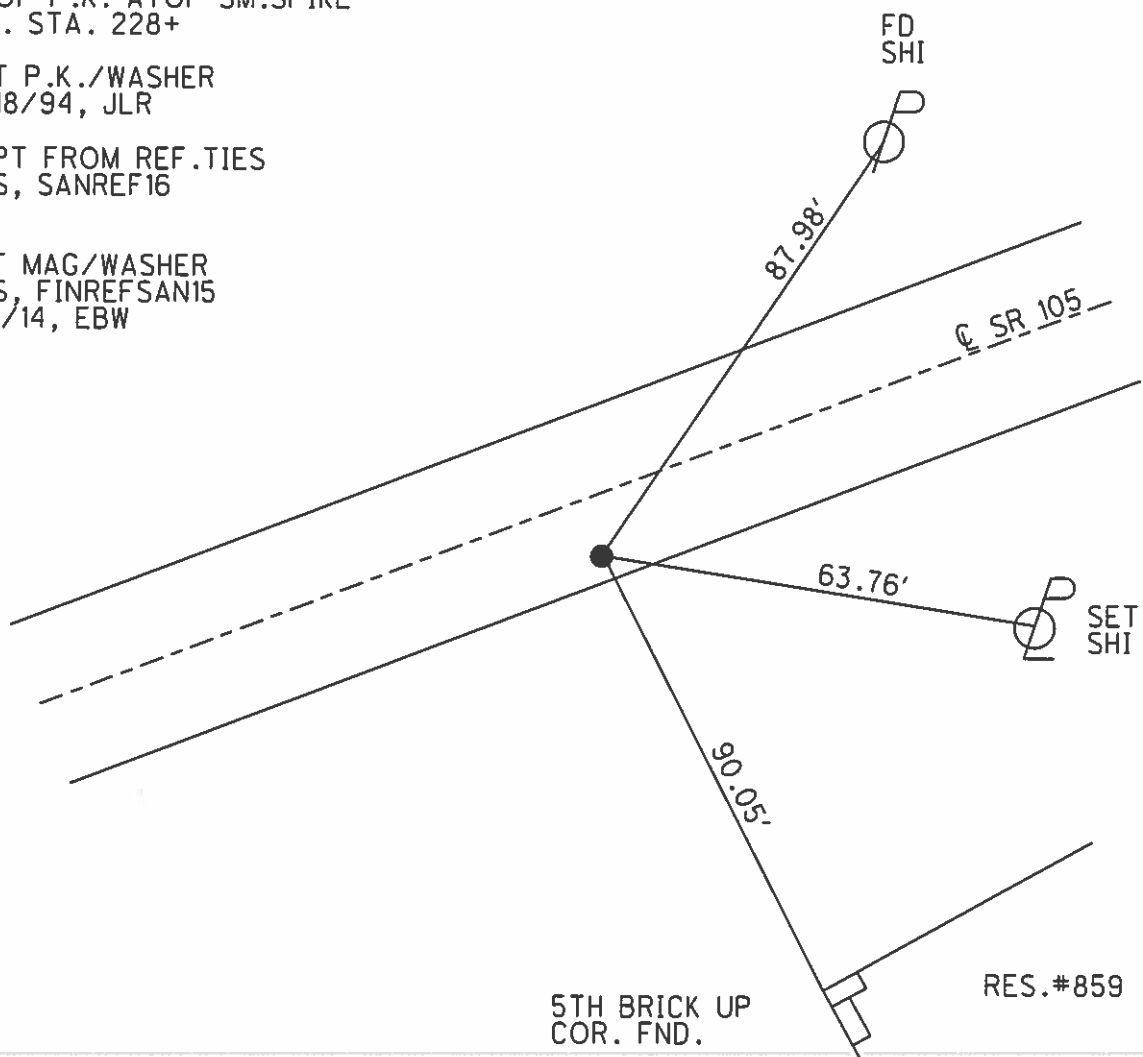
PERSONNEL _____ REFERENCE NO. 16 SHEET 5 OF 6
 NOTES RHOADES DATE 7/1/14 ROUTE SR 105
 H.C. WESTFALL WEATHER CLOUDY COUNTY SANDUSKY
 R.C. THOMAS TEMP. 78° TOWNSHIP WOODVILLE
 _____ SECTION 27
 _____ T 6 N R 13 E

TYPE MONUMENT P.K./WASHER
 ON SURFACE - ~~BELOW~~ ON
~~LEFT~~ - Q PAV'T - RIGHT 7.2'
2.4' TO RT EDGE PAVEMENT
 S.L.M. 227+84



Grid: Northing: 652044.524 Easting: 1736014.133

RECORD: 7/24/85
 P.K./WASHER ON SURFACE
 ATOP P.K. ATOP SM.SPIKE
 P.I. STA. 228+
 SET P.K./WASHER
 8/18/94, JLR
 CNPT FROM REF.TIES
 GPS, SANREF16
 DH
 SET MAG/WASHER
 GPS, FINREFSAN15
 7/1/14, EBW



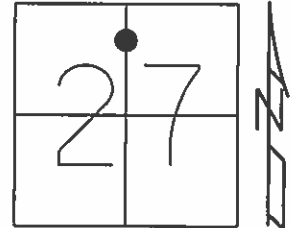
RES.#859

O.D.O.T. DISTRICT 2 SURVEY OFFICE (USE ONLY)

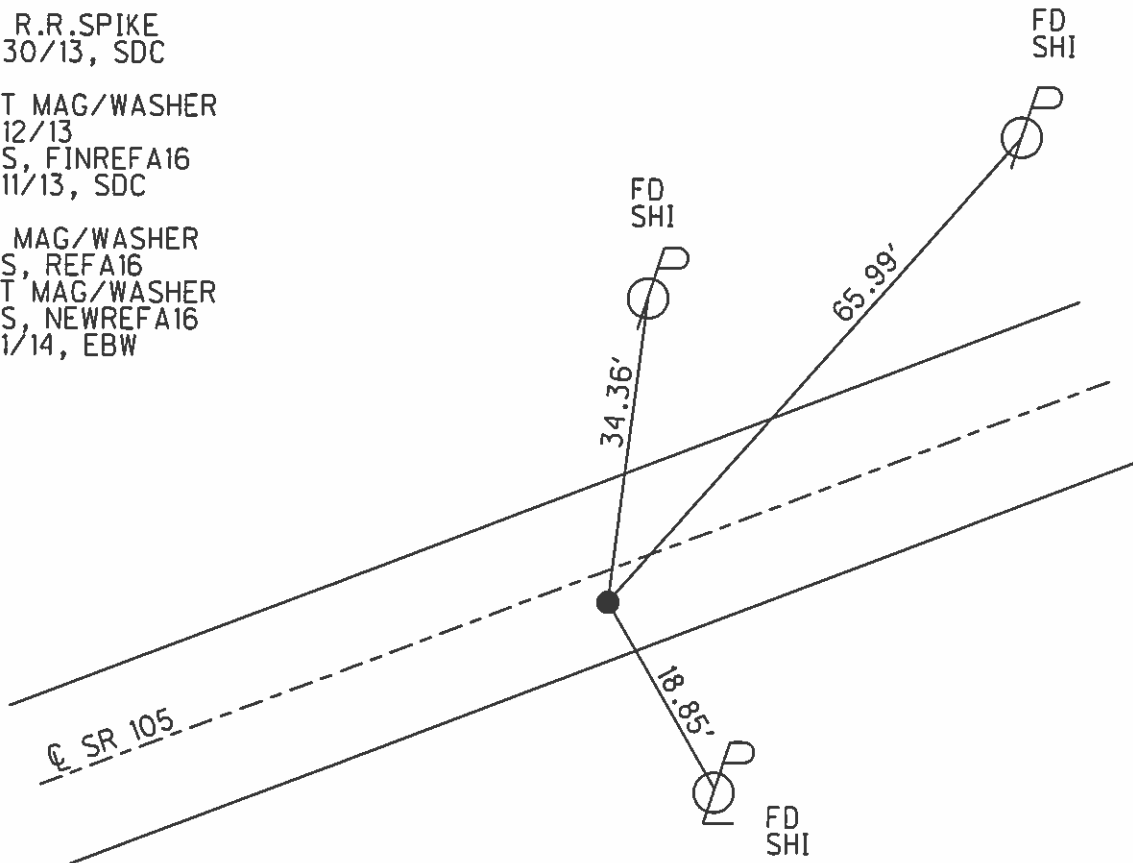
PERSONNEL _____ REFERENCE NO. 16 A SHEET 6 OF 6
 NOTES RHOADES DATE 7/1/14 ROUTE SR 105
 H.C. WESTFALL WEATHER CLOUDY COUNTY SANDUSKY
 R.C. THOMAS TEMP. 78° TOWNSHIP WOODVILLE
 _____ SECTION 27
 _____ T 6 N R 13 E

TYPE MONUMENT R.R.SPIKE
 ON SURFACE - ~~BELOW~~ ON
~~LEFT~~ - Q PAV'T - RIGHT 2.5'
- TO - EDGE PAVEMENT
 S.L.M. 228+41

Grid: Northing: 652069.989 Easting: 1736080.896



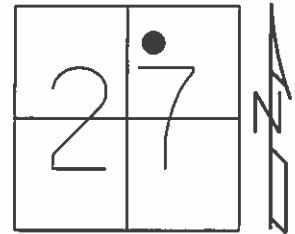
FD R.R.SPIKE
 4/30/13, SDC
 SET MAG/WASHER
 6/12/13
 GPS, FINREFA16
 7/11/13, SDC
 FD MAG/WASHER
 GPS, REFA16
 SET MAG/WASHER
 GPS, NEWREFA16
 7/1/14, EBW



O.D.O.T. DISTRICT 2 SURVEY OFFICE (USE ONLY)

PERSONNEL	REFERENCE NO. <u>17</u>	SHEET <u>2</u> OF <u>10</u>
NOTES <u>RHOADES</u>	DATE <u>4/30/13</u>	ROUTE <u>SR 105</u>
H.C. <u>CODER</u>	WEATHER <u>CLEAR</u>	COUNTY <u>SANDUSKY</u>
R.C. <u>RHOADES</u>	TEMP. <u>51°</u>	TOWNSHIP <u>WOODVILLE</u>
		SECTION <u>27</u>
		T <u>6</u> N R <u>13</u> E

TYPE MONUMENT P.K./WASHER
 ON SURFACE - ~~BELOW~~ ON
~~LEFT~~ - Q PAV'T - RIGHT 6.0'
3.5' TO RT. EDGE PAVEMENT
 S.L.M. 236+81
 Grid: Northing: 652365.674 Easting: 1736850.625

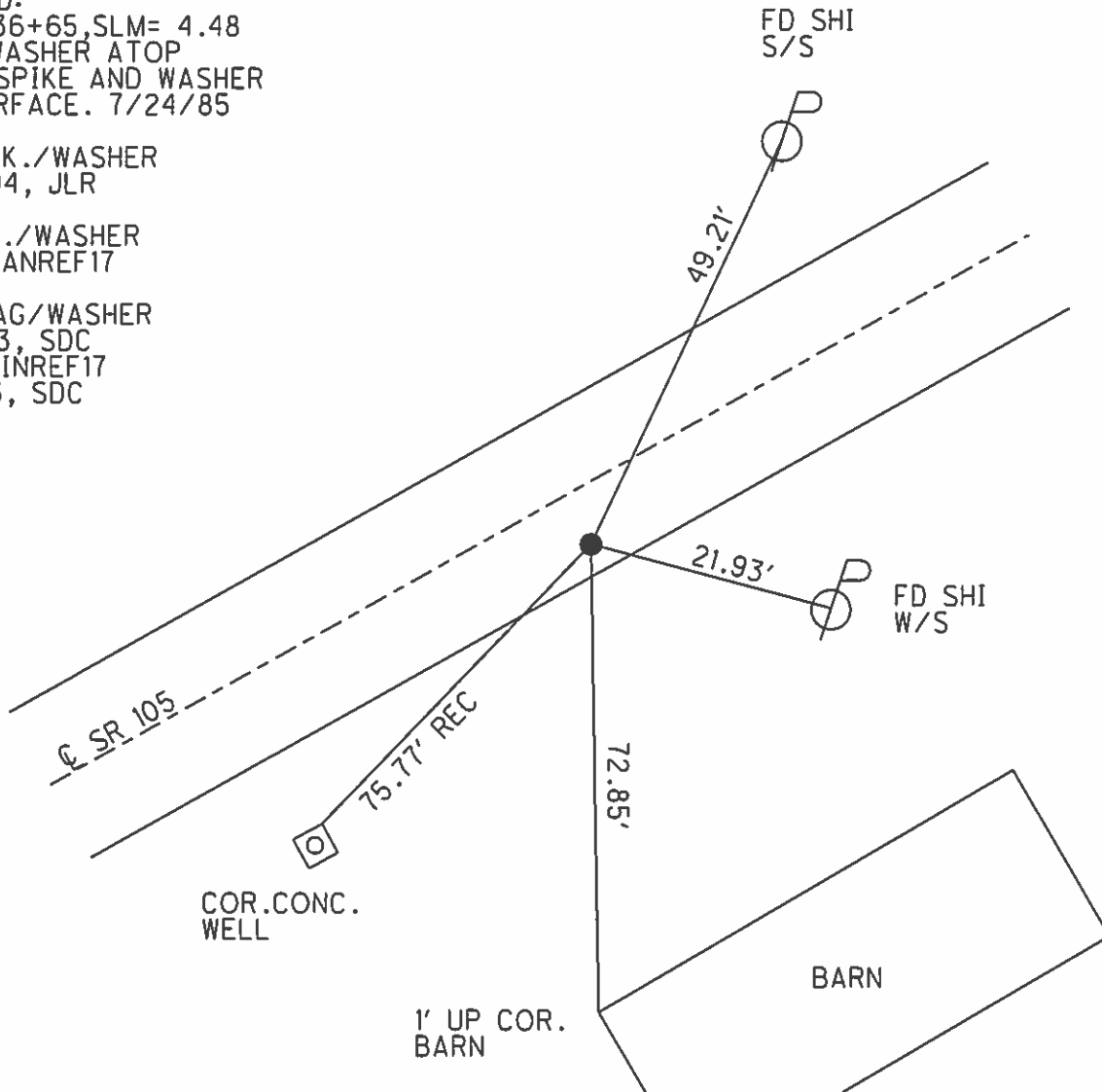


RECORD:
 P.I. 236+65, SLM= 4.48
 P.K./WASHER ATOP
 BOAT SPIKE AND WASHER
 ON SURFACE. 7/24/85

SET P.K./WASHER
 8/18/94, JLR

FD P.K./WASHER
 GPS, SANREF17

SET MAG/WASHER
 6/12/13, SDC
 GPS, FINREF17
 7/11/13, SDC



O.D.O.T. DISTRICT 2 SURVEY OFFICE (USE ONLY)

PERSONNEL

REFERENCE NO. 18

SHEET 3 OF 10

NOTES HOMAN

DATE 5/1/13

ROUTE SR 105

H.C. HOMAN

WEATHER SUNNY

COUNTY SANDUSKY

R.C. ROUSOS

TEMP. 59°

TOWNSHIP WOODVILLE

SECTION 27

T 6 N R 13 E

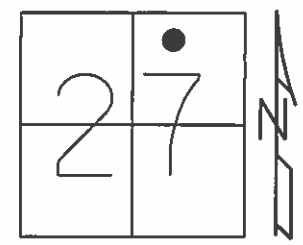
TYPE MONUMENT P.K./WASHER

ON SURFACE - ~~BELOW~~ ON

~~LEFT~~ - Q PAV'T - RIGHT 5.0'

4.2' TO RT EDGE PAVEMENT

S.L.M. 241+81



Grid: Northing: 652640.409 Easting: 1737268.871

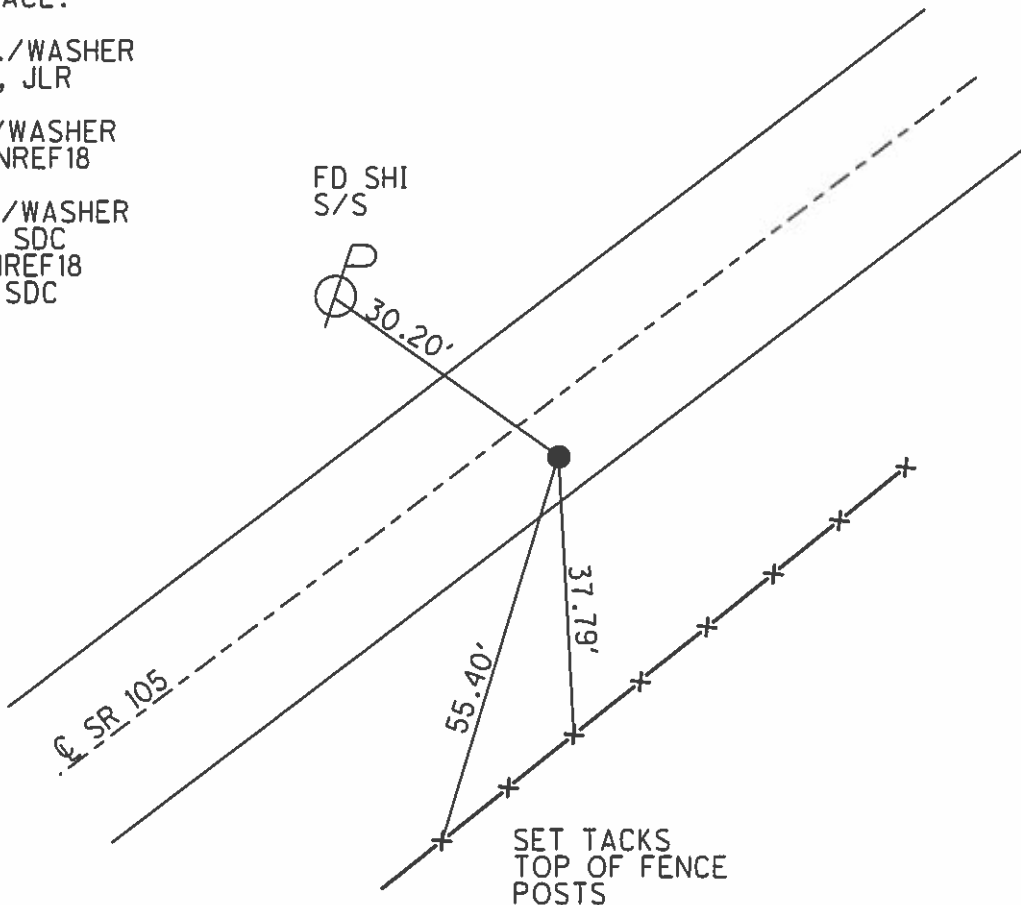
RECORD:

P.I. 241+90
P.K./WASHER ATOP
BOAT SPIKE AND WASHER
ON SURFACE.

SET P.K./WASHER
8/18/94, JLR

FD P.K./WASHER
GPS, SANREF18

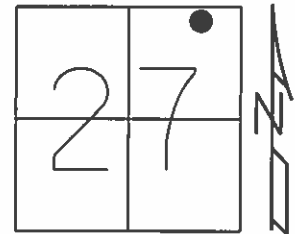
SET MAG/WASHER
6/12/13, SDC
GPS, FINREF18
7/11/13, SDC



O.D.O.T. DISTRICT 2 SURVEY OFFICE (USE ONLY)

PERSONNEL	REFERENCE NO. <u>19</u>	SHEET <u>4</u> OF <u>10</u>
NOTES <u>RHOADES</u>	DATE <u>6/12/13</u>	ROUTE <u>SR 105</u>
H.C. <u>CODER</u>	WEATHER <u>HAZY</u>	COUNTY <u>SANDUSKY</u>
R.C. <u>RHOADES</u>	TEMP. <u>78°</u>	TOWNSHIP <u>WOODVILLE</u>
		SECTION <u>27</u>
		T <u>6</u> N R <u>13</u> E

TYPE MONUMENT 5/8" IPIN
 ON SURFACE - ~~BELOW~~ ON _____
~~LEFT~~ - Q PAV'T - RIGHT 13.0'
3.5' TO RT EDGE PAVEMENT
 S.L.M. 250+30
 Grid: Northing: 653182.086 Easting: 1737922.469

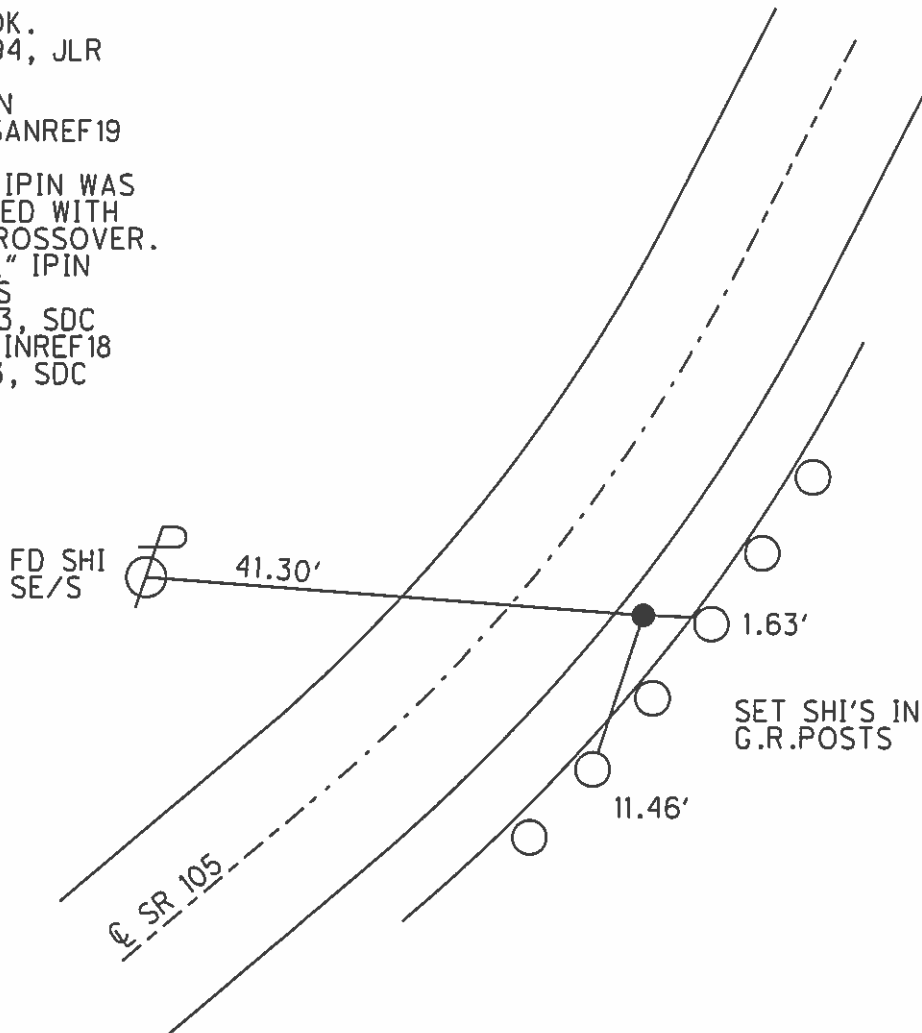


RECORD:
 P.I. 250+36, SLM= 4.74

TIES OK.
 8/18/94, JLR

FD IPIN
 GPS, SANREF19

NOTE: IPIN WAS
 REMOVED WITH
 NEW CROSSOVER.
 SET 5/8" IPIN
 W/ GPS
 6/12/13, SDC
 GPS, FINREF18
 7/11/13, SDC



O.D.O.T. DISTRICT 2 SURVEY OFFICE (USE ONLY)

PERSONNEL

REFERENCE NO. 20

SHEET 5 OF 11

NOTES MILLER DATE 12/28/23

H.C. RHOADES WEATHER RAIN

R.C. MILLER TEMP. 44°

ROUTE SR 105

COUNTY SANDUSKY

TOWNSHIP WOODVILLE

SECTION 22

DWG BY RHOADES PID PAVING TRAIN

T 6 N R 13 E

TYPE MONUMENT MAG/WASHER

ON SURFACE - ~~BELOW~~ ON

OFFSET 0.8' LT : ~~RT~~

9.0' TO LT EDGE PAVEMENT

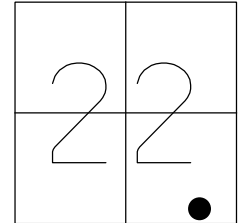
STATION: 257+12

HORZ.DATUM: NAD83 2011

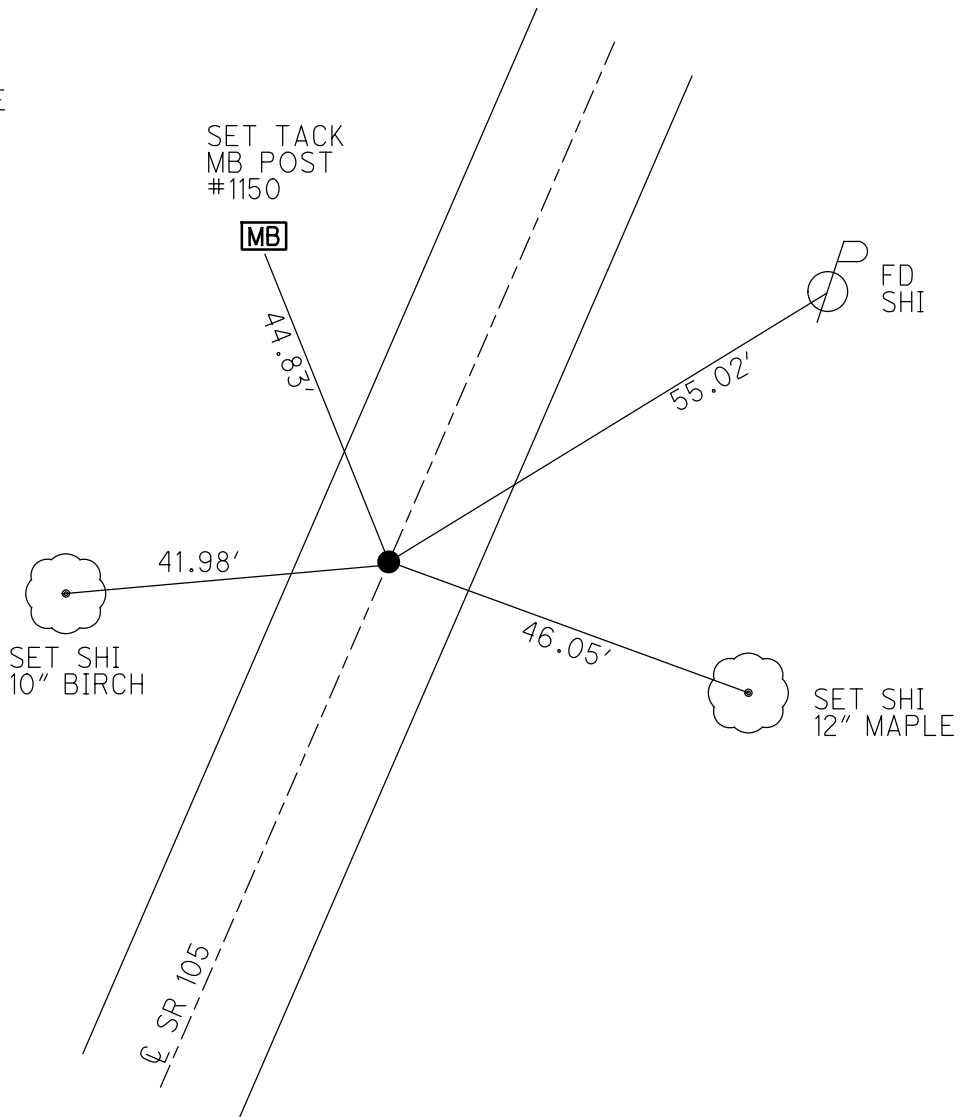
GEOID: NAVD88 2018

GRID: NORTHING: 653801.544

EASTING: 1738209.084



RECORD: P.I.
 STA. 257+20
 P.K./WASHER
 ATOP BOAT SPIKE
 7/24/85
 SET P.K./WASHER
 8/18/94, JLR
 FD P.K.SHANK
 SANREF20
 5/1/13, SDC
 SET MAG/WASHER
 FINREF20
 7/11/13, SDC
 FD MAG/WASHER
 REF20
 7/6/23, DSA
 12/28/23, JMR



O.D.O.T. DISTRICT 2 SURVEY OFFICE (USE ONLY)

PERSONNEL

REFERENCE NO. 21

SHEET 6 OF 11

NOTES MILLER

DATE 12/28/23

ROUTE SR 105

H.C. RHOADES

WEATHER RAIN

COUNTY SANDUSKY

R.C. MILLER

TEMP. 44°

TOWNSHIP WOODVILLE

SECTION 22

DWG BY RHOADES PID PAVING TRAIN

T 6 N R 13 E

TYPE MONUMENT MAG/WASHER

ON SURFACE - ~~BELOW~~ ON

OFFSET \varnothing PAVEMENT 4' LT : ~~RT~~

8.8' TO LT EDGE PAVEMENT

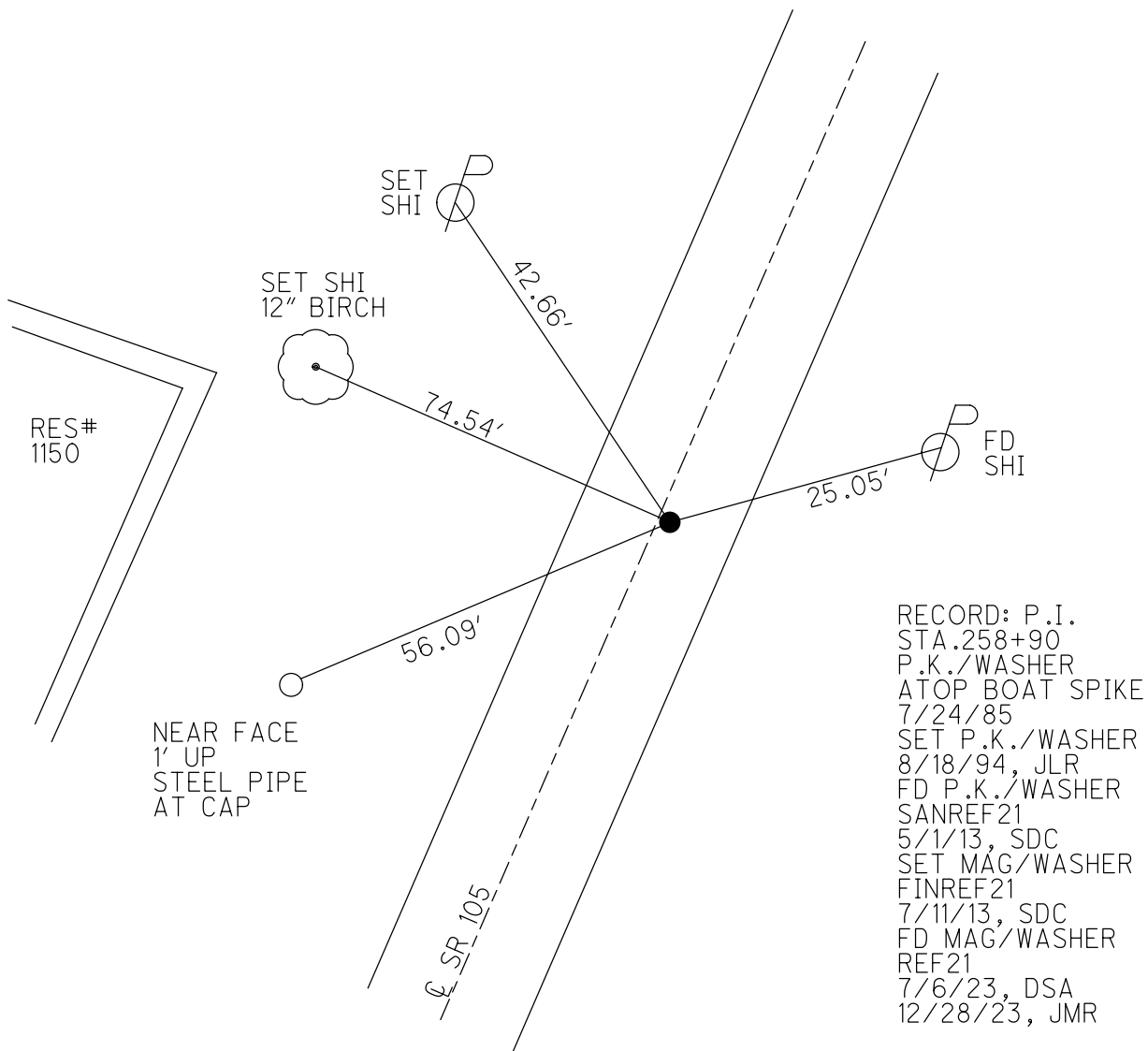
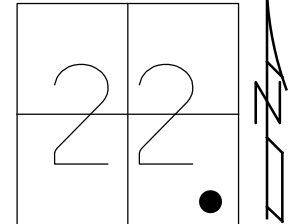
STATION: 258+77

HORIZ.DATUM: NAD83 2011

GEOID: NAVD88 2018

GRID: NORTHING: 653949.699

EASTING: 1738279.997



RECORD: P.I.
 STA.258+90
 P.K./WASHER
 ATOP BOAT SPIKE
 7/24/85
 SET P.K./WASHER
 8/18/94, JLR
 FD P.K./WASHER
 SANREF21
 5/1/13, SDC
 SET MAG/WASHER
 FINREF21
 7/11/13, SDC
 FD MAG/WASHER
 REF21
 7/6/23, DSA
 12/28/23, JMR

O.D.O.T. DISTRICT 2 SURVEY OFFICE (USE ONLY)

PERSONNEL

REFERENCE NO. 22

SHEET 7 OF 11

NOTES MILLER DATE 12/28/23

H.C. RHOADES WEATHER RAIN

R.C. MILLER TEMP. 44°

ROUTE SR 105

COUNTY SANDUSKY

TOWNSHIP WOODVILLE

SECTION 22

DWG BY RHOADES PID PAVING TRAIN

T 6 N R 13 E

TYPE MONUMENT MAG/WASHER

ON SURFACE - ~~BELOW~~ ON

OFFSET Q PAVEMENT ON LT : RT

9.8' TO RT EDGE PAVEMENT

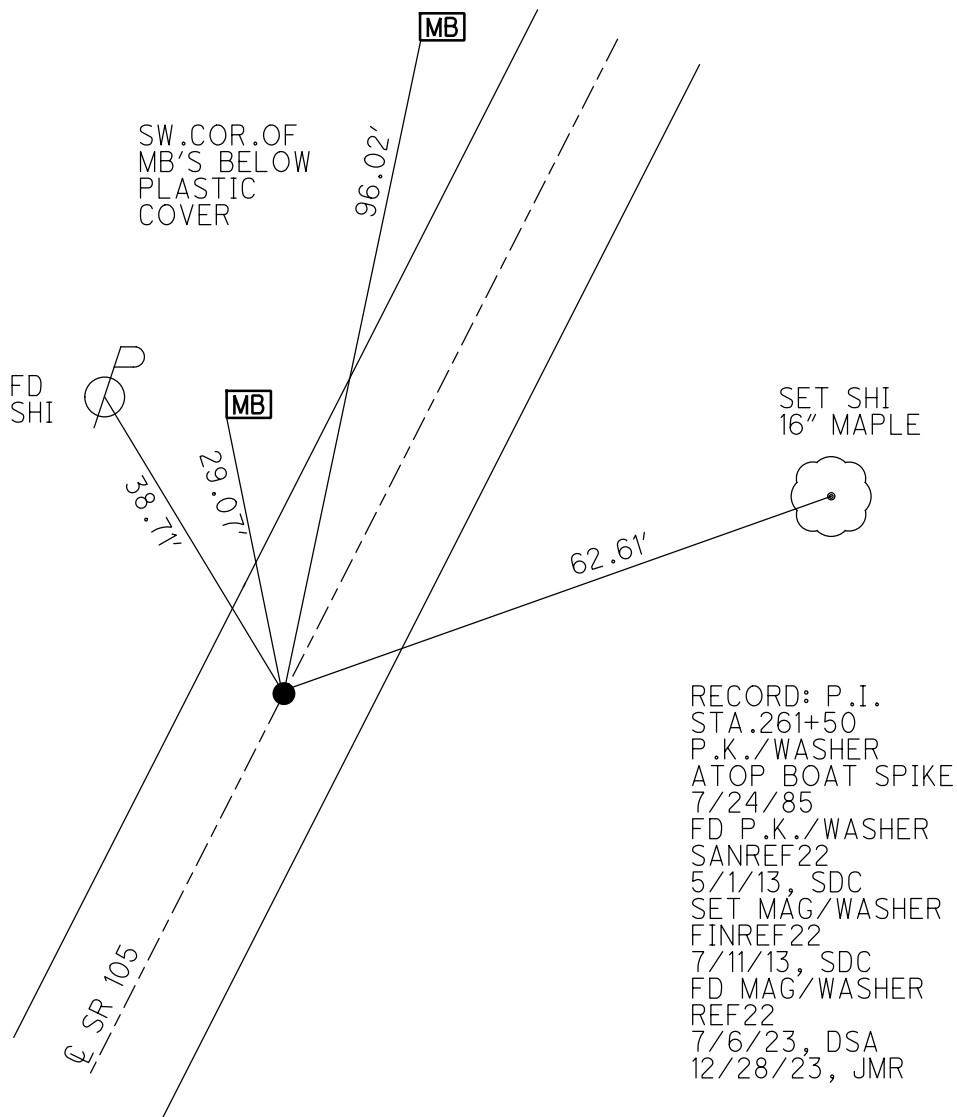
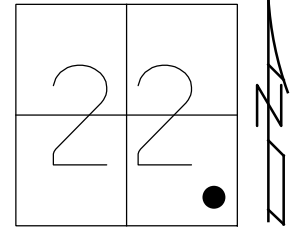
STATION: 261+26

HORIZ.DATUM: NAD83 2011

GEOID: NAVD88 2018

GRID: NORTHING: 654168.538

EASTING: 1738396.013



O.D.O.T. DISTRICT 2 SURVEY OFFICE (USE ONLY)

PERSONNEL _____ REFERENCE NO. 23 SHEET 8 OF 10

NOTES HOMAN DATE 5/1/13 ROUTE SR 105

H.C. HOMAN WEATHER SUNNY COUNTY SANDUSKY

R.C. ROUSOS TEMP. 60° TOWNSHIP WOODVILLE

SECTION 22

T 6 N R 13 E

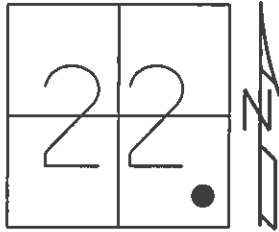
TYPE MONUMENT P.K./WASHER

ON SURFACE - ~~BELOW~~ ON

LEFT - Q PAV'T - RIGHT ON

9.5' TO RT EDGE PAVEMENT

S.L.M. 262+78



Grid: Northing: 654300.087 Easting: 1738469.383

RECORD:

P.I. 262+80, SLM= 4.98
P.K./WASHER ATOP
BOAT SPIKE ON SURFACE.
7/24/85

SET P.K./WASHER
8/18/94, JLR

FD P.K./WASHER
GPS, SANREF23

SET MAG/WASHER
6/12/13, SDC
GPS, FINREF23
7/11/13, SDC

SE.COR.M.B.
6" UP #1162

MB

57.76'

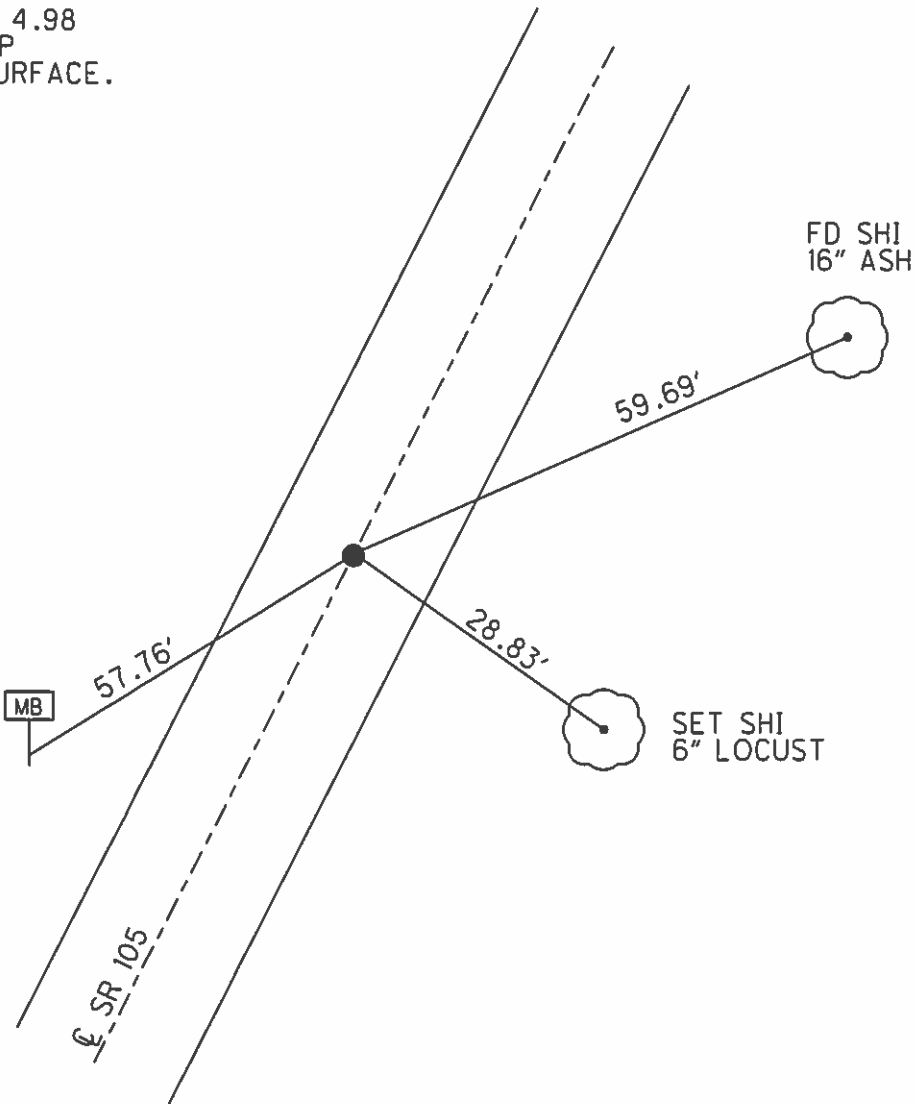
SR 105

28.83'

59.69'

FD SHI
16" ASH

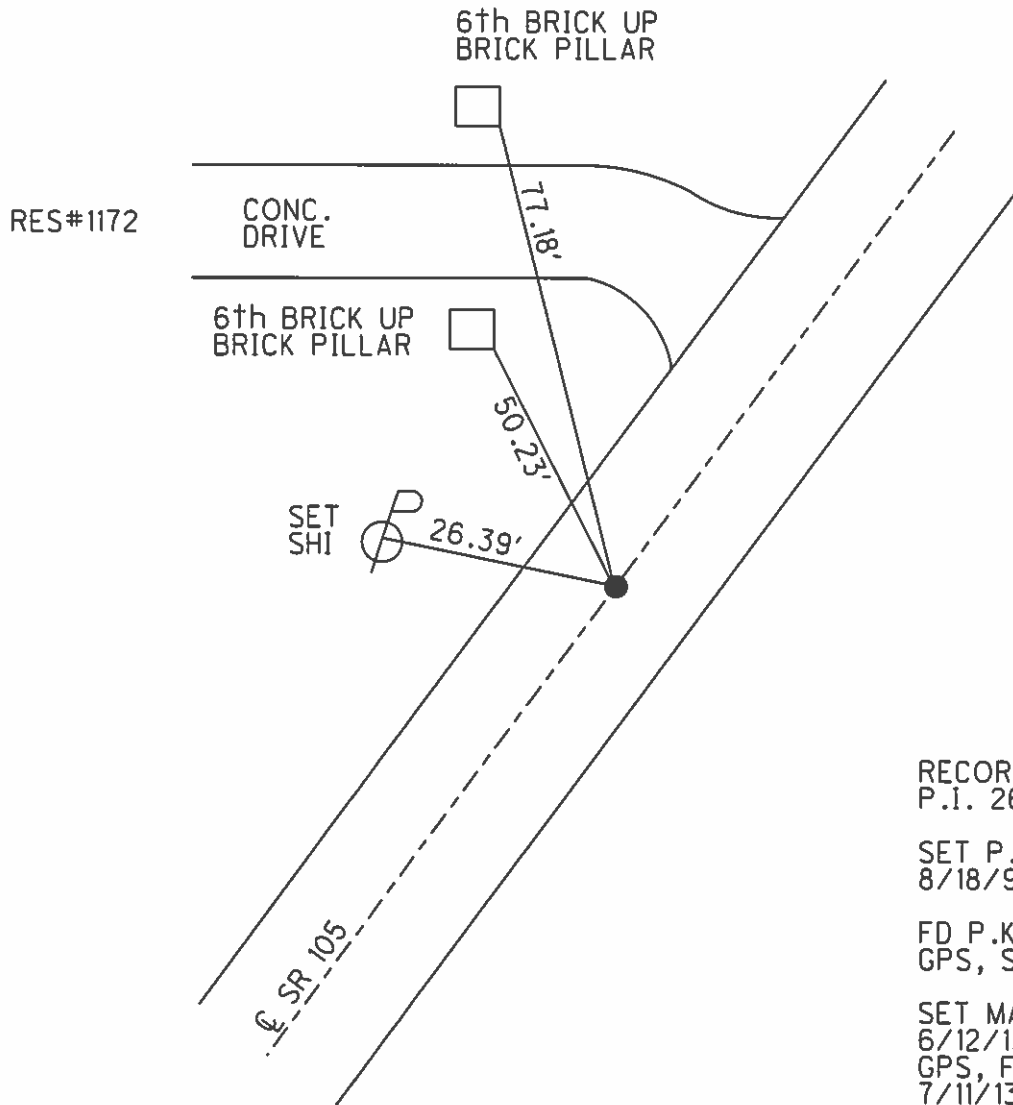
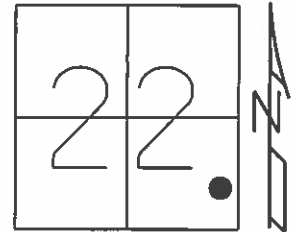
SET SHI
6" LOCUST



O.D.O.T. DISTRICT 2 SURVEY OFFICE (USE ONLY)

PERSONNEL _____ REFERENCE NO. 24 SHEET 9 OF 10
NOTES HOMAN DATE 5/2/13 ROUTE SR 105
H.C. HOMAN WEATHER SUNNY COUNTY SANDUSKY
R.C. ROUSOS TEMP. 60° TOWNSHIP WOODVILLE
SECTION 22
T 6 N R 13 E

TYPE MONUMENT P.K./WASHER
ON SURFACE - ~~BELOW~~ ON _____
LEFT - Q PAV'T - RIGHT ON _____
9.5' TO RT EDGE PAVEMENT
S.L.M. 264+83
Grid: Northing: 654484.999 Easting: 1738586.022

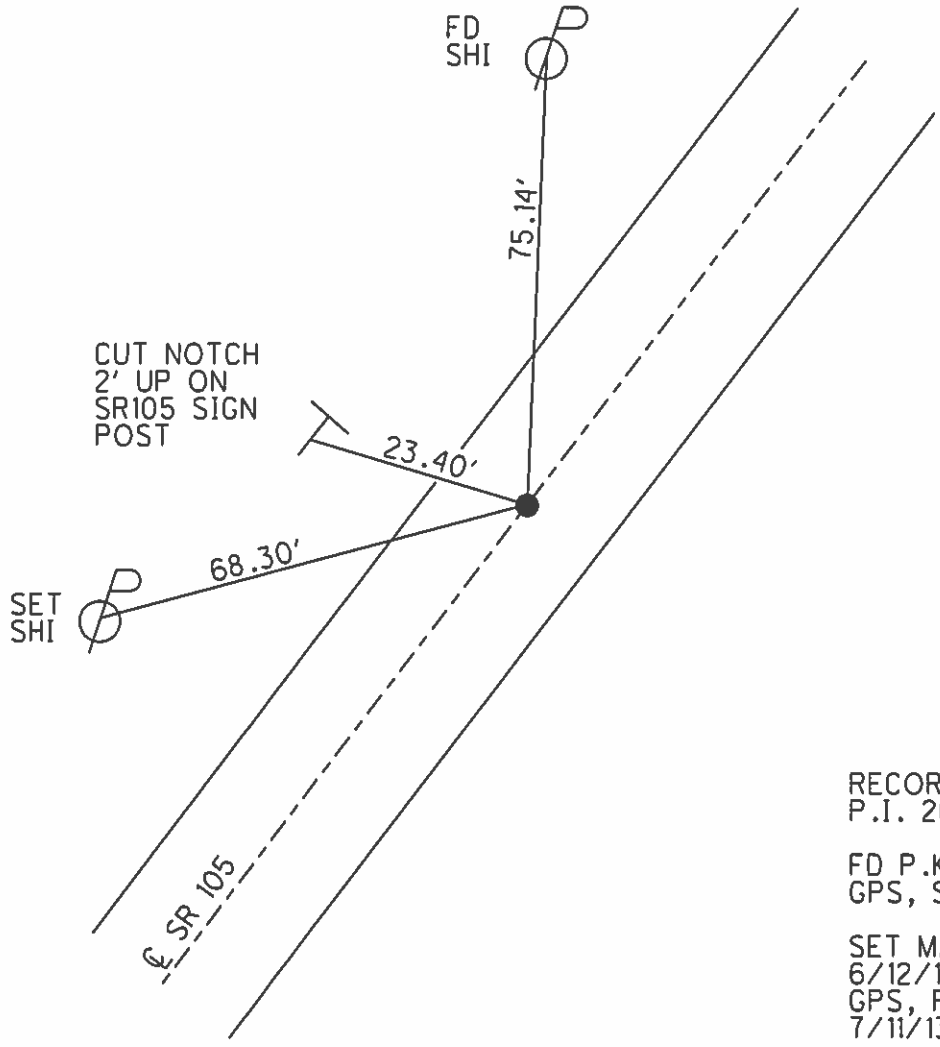
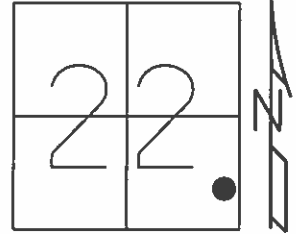


RECORD:
P.I. 264+90
SET P.K./WASHER
8/18/94, JLR
FD P.K./WASHER
GPS, SANREF24
SET MAG/WASHER
6/12/13, SDC
GPS, FINREF24
7/11/13, SDC

O.D.O.T. DISTRICT 2 SURVEY OFFICE (USE ONLY)

PERSONNEL _____ REFERENCE NO. 25 SHEET 10 OF 10
 NOTES HOMAN DATE 5/2/13 ROUTE SR 105
 H.C. HOMAN WEATHER SUNNY COUNTY SANDUSKY
 R.C. ROUSOS TEMP. 60° TOWNSHIP WOODVILLE
 _____ SECTION 22
 _____ T 6 N R 13 E

TYPE MONUMENT P.K./WASHER
 ON SURFACE - ~~BELOW~~ ON _____
 LEFT - Q PAV'T - ~~RIGHT~~ 1.5'
7.7' TO LT EDGE PAVEMENT
 S.L.M. 266+60
 Grid: Northing: 654633.141 Easting: 1738750.927

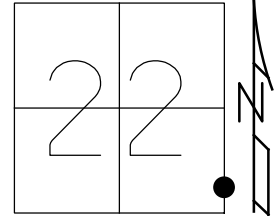


RECORD: 1985
 P.I. 266+60
 FD P.K./WASHER
 GPS, SANREF25
 SET MAG/WASHER
 6/12/13, SDC
 GPS, FINREF25
 7/11/13, SDC

O.D.O.T. DISTRICT 2 SURVEY OFFICE (USE ONLY)

PERSONNEL _____ REFERENCE NO. 26 SHEET 11 OF 11
 NOTES HOMAN DATE 5/2/13 ROUTE SR 105
 H.C. HOMAN WEATHER CLEAR COUNTY SANDUSKY
 R.C. ROUSOS TEMP. 60° TOWNSHIP WOODVILLE
 _____ SECTION 22
 _____ T 6 N R 13 E

TYPE MONUMENT P.K./WASHER
 ON SURFACE - ~~BELOW~~ ON
 LEFT - CL PAV'T - RIGHT ON
10.3' TO RT EDGE PAVEMENT
 S.L.M. 267+71



GRID: NORTHING: 654700.739 EASTING: 1738750.927

RECORD: P.O.T. 0+00
 RESET P.K./WASHER
 9/14/94, MB

SANDUSKY CO.
 REF 26
 STA. 267+69.6
 RECORD 1985: P.I.
 STA. 267+71

FD P.K.
 GPS, SANREF26

SET MAG/WASHER
 6/12/13, SDC
 GPS, FINREFOTT1
 7/11/13, SDC

NOTE: OTT REF 1

