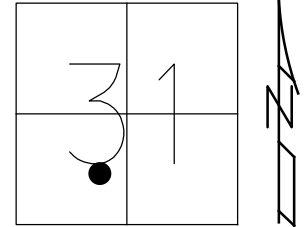


O.D.O.T. DISTRICT 2 SURVEY OFFICE (USE ONLY)

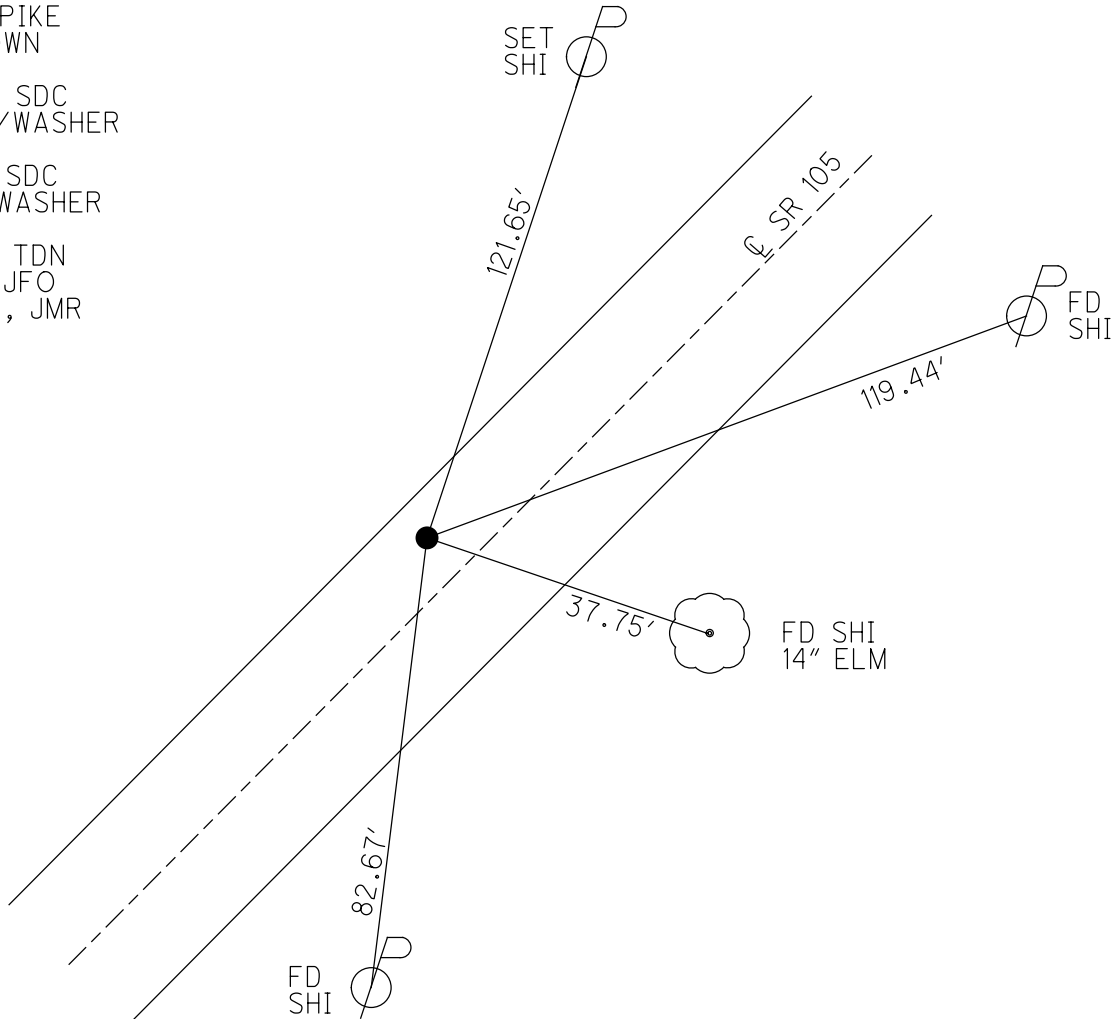
PERSONNEL _____ REFERENCE NO. 1 SHEET 2 OF 13
 NOTES MILLER DATE 12/28/23 ROUTE SR 105
 H.C. RHOADES WEATHER RAIN COUNTY SANDUSKY
 R.C. MILLER TEMP. 44° TOWNSHIP WOODVILLE
 _____ SECTION 31
 DWG BY RHOADES PID PAVING TRAIN T 6 N R 13 E

TYPE MONUMENT MAG/WASHER
 ON SURFACE - ~~BELOW~~ ON _____
 OFFSET \odot PAVEMENT 5' LT : ~~RT~~
15.5' TO RT EDGE PAVEMENT
 STATION: 25+41.5



HORZ.DATUM: NAD83 2011 GEOID: NAVD88 2018
 GRID: NORTHING: 644095.962 EASTING: 1719313.962

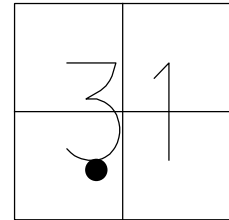
RECORD: P.I.
 $\Delta = 6^{\circ}06'$ RT
 FD R.R.SPIKE
 1 1/2" DOWN
 SANREF2
 4/30/13, SDC
 SET MAG/WASHER
 FINREF1
 5/31/13, SDC
 FD MAG/WASHER
 REF1
 5/25/21, TDN
 4/7/22, JFO
 12/28/23, JMR



O.D.O.T. DISTRICT 2 SURVEY OFFICE (USE ONLY)

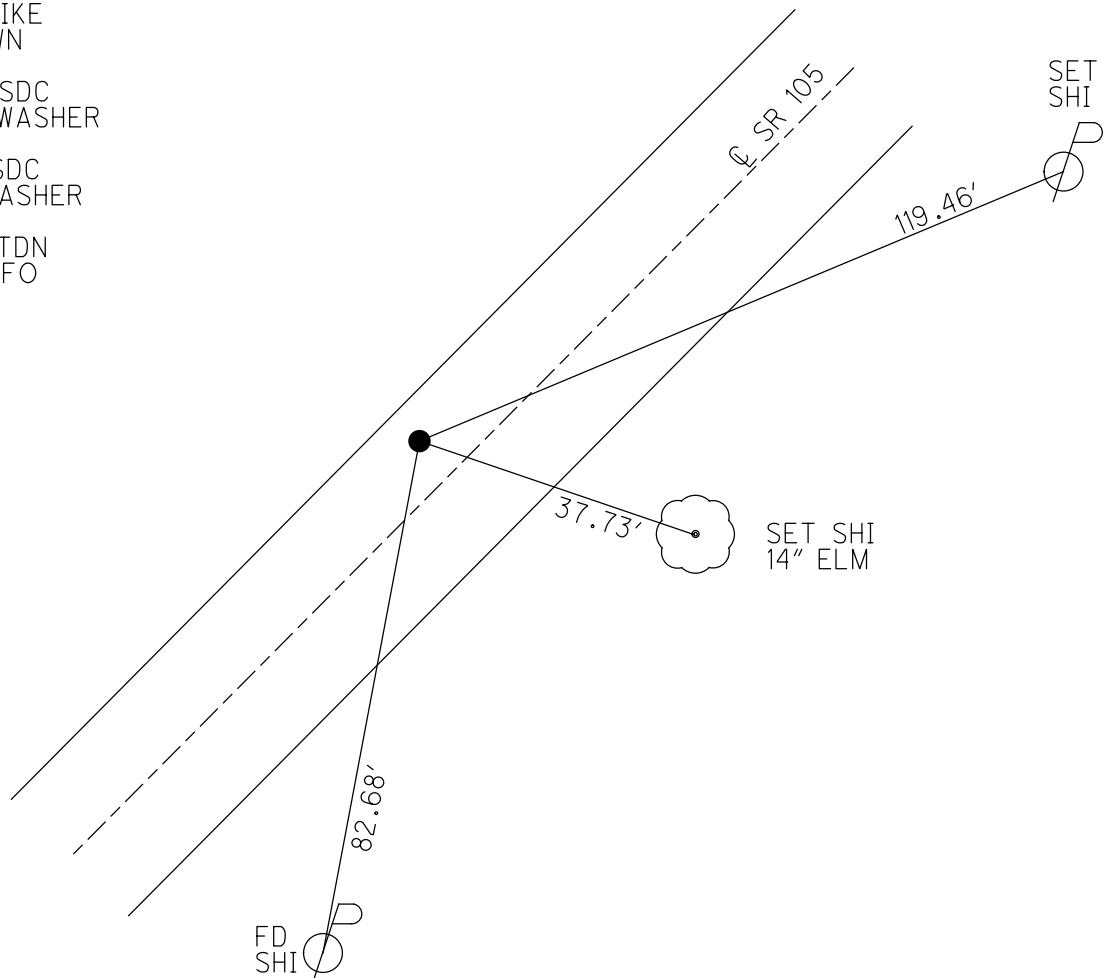
PERSONNEL _____ REFERENCE NO. 1 SHEET 2 OF 13
 NOTES RHOADES DATE 5/25/21 ROUTE SR 105
 H.C. NIESE WEATHER FAIR COUNTY SANDUSKY
 R.C. RHOADES TEMP. 77° TOWNSHIP WOODVILLE
 DWG BY RHOADES PID PVTRAIN SECTION 31
 T 6 N R 13 E

TYPE MONUMENT MAG/WASHER
 ON SURFACE - ~~BELOW~~ ON
 OFFSET CL PAVEMENT 5' LT : ~~RT~~
15.5' TO RT EDGE PAVEMENT
 STATION: 25+41.5



HORZ. DATUM: NAD83 2011 GEOID: NAVD88 2018
 GRID: NORTHING: 644095.962 EASTING: 1719313.962

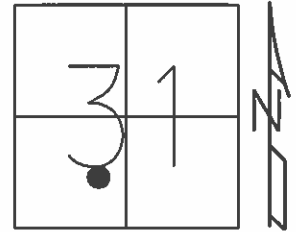
RECORD: P.I.
 $\Delta = 6^{\circ}06'$ RT
 FD R.R. SPIKE
 1 1/2" DOWN
 SANREF2
 4/30/13, SDC
 SET MAG/WASHER
 FINREF1
 5/31/13, SDC
 FD MAG/WASHER
 REF1
 5/25/21, TDN
 4/7/22, JFO



O.D.O.T. DISTRICT 2 SURVEY OFFICE (USE ONLY)

PERSONNEL	REFERENCE NO. <u>1</u>	SHEET <u>2</u> OF <u>13</u>
NOTES <u>RHOADES</u>	DATE <u>4/30/13</u>	ROUTE <u>SR 105</u>
H.C. <u>CODER</u>	WEATHER <u>CLEAR</u>	COUNTY <u>SANDUSKY</u>
R.C. <u>LAU</u>	TEMP. <u>51°</u>	TOWNSHIP <u>WOODVILLE</u>
		SECTION <u>31</u>
		T. <u>6</u> N R. <u>13</u> E

TYPE MONUMENT R.R.SPIKE
~~ON SURFACE~~ - BELOW 1.5"
 LEFT - Q PAV'T - ~~RIGHT~~ 5'
15.5' TO RT EDGE PAVEMENT
 S.L.M. 25+41.5

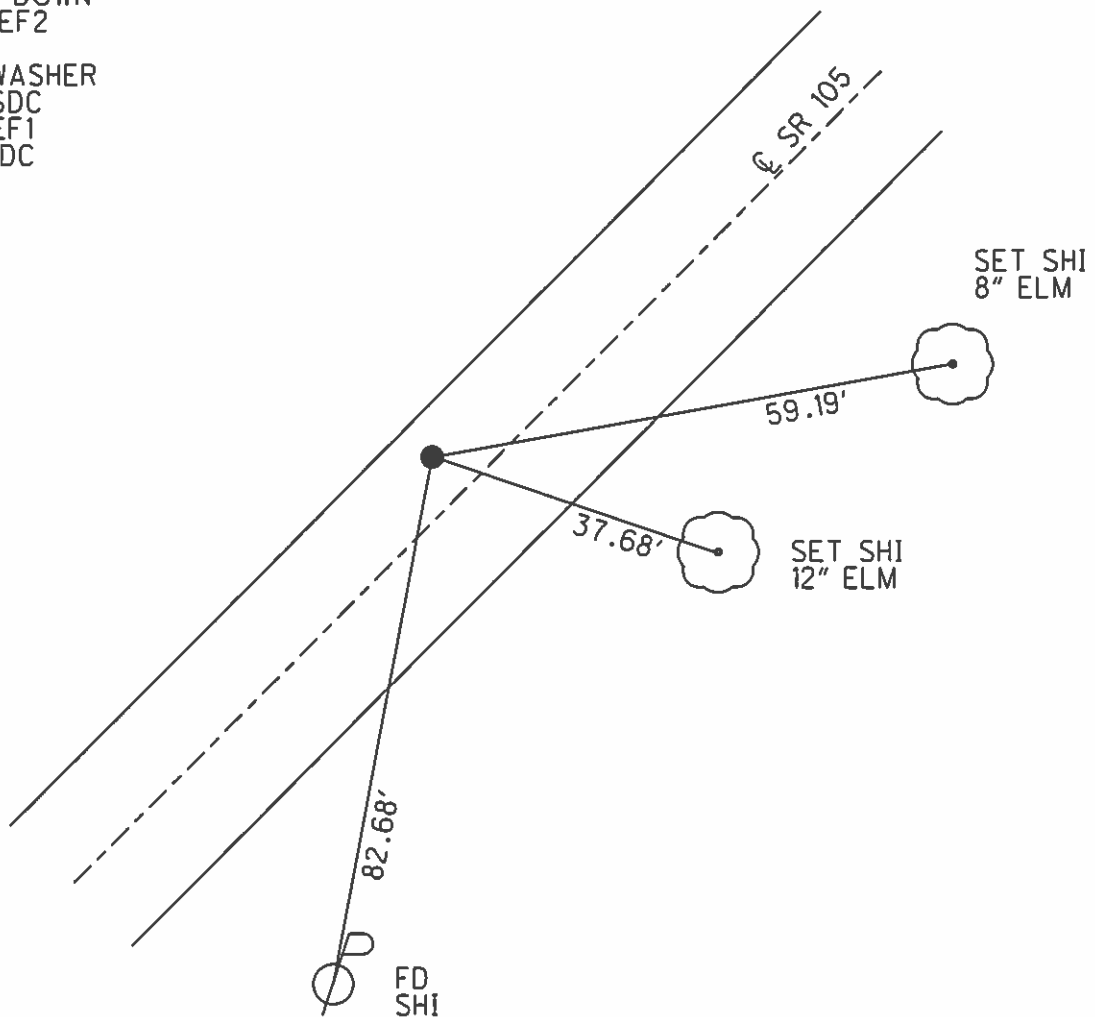


Grid: Northing: 644095.988 Easting: 1719313.911

RECORD: P.I.
 $\Delta = 6^\circ 06' RT$

FD P.K. 2" DOWN
 GPS, SANREF2

SET MAG/WASHER
 5/23/13, SDC
 GPS, FINREF1
 5/31/13, SDC



O.D.O.T. DISTRICT 2 SURVEY OFFICE

PERSONNEL

REFERENCE NO. 1

SHEET OF

NOTES A. Cheney

H.C. BARBOUR

R.C. J. Ripple

R. Geyman

DATE 10-31-91

WEATHER Cloudy

TEMP. 60°

ROUTE 105

COUNTY SAN.

TOWNSHIP Woodville

SECTION 31

T. 6 N R. 13 E

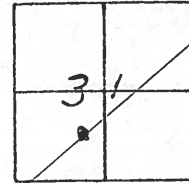
TYPE MONUMENT P.K. Washer

~~ON SURFACE~~ - BELOW P.K. Washer

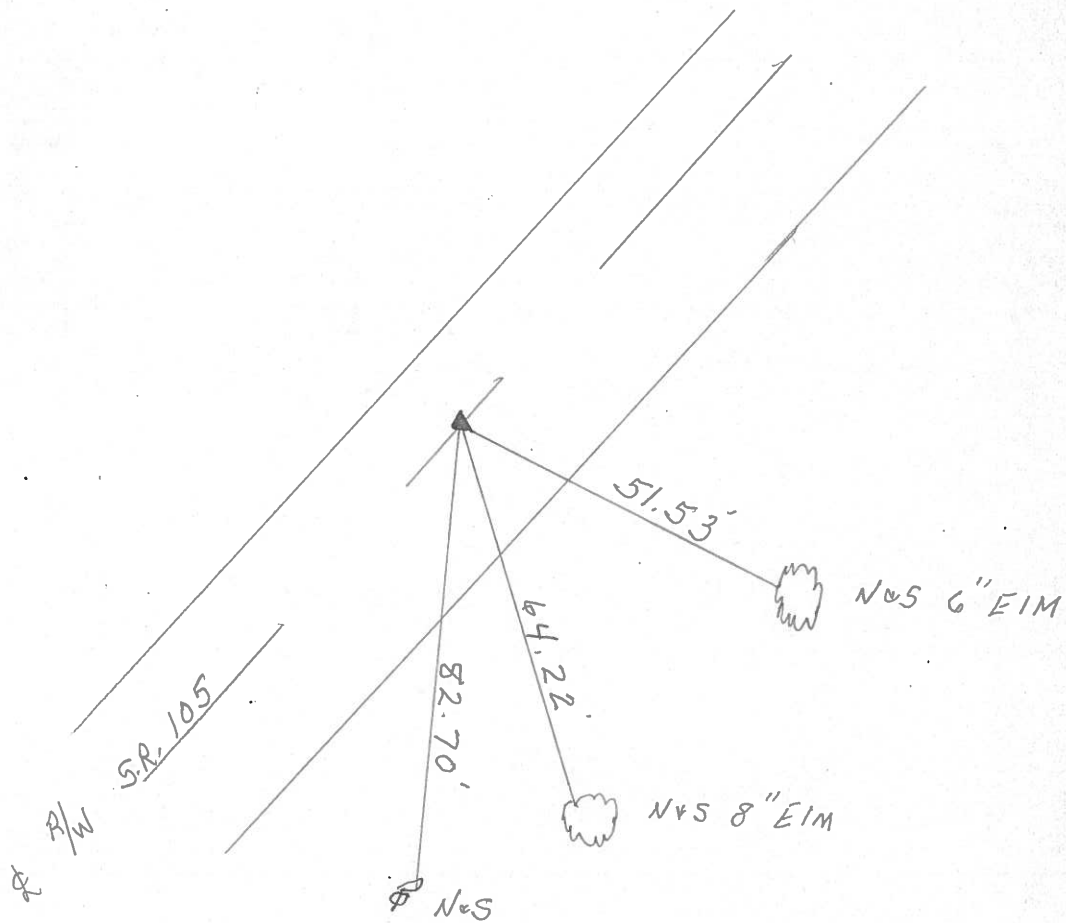
LEFT - C. PAV'T. - RIGHT 5' LT.

15.5' TO RT. EDGE PAVEMENT

S.L.M. 25 + 41.5



P.I. Δ $6^{\circ} 06'$ RT.



County Sandusky S.R. # 105

Township Woodville

Section 31

T6N, R13E

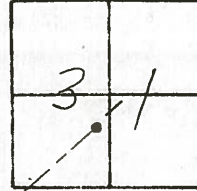
Personnel Cranin
Ripple
Geyman
Mosser
Barbour

Date 6/30/82

Weather sunny

Temp. 66°

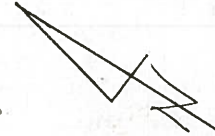
①



4/24/91 Temp. 42° CH NOTES
 BAR HC
 GEY RC
 RIP FLAG

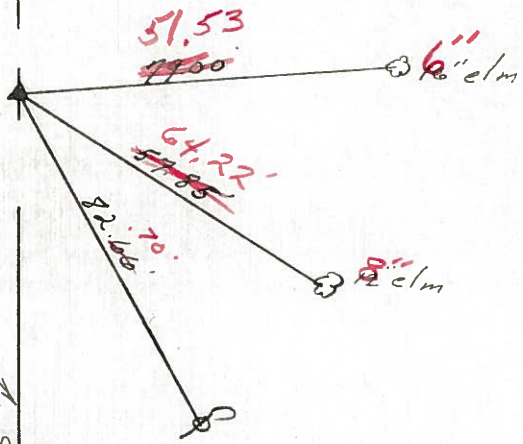
70 = 131-91
 cloudy 60°

5' LT. E
 155 RT. EIP



O.I. Δ = 6°06' RT.
~~41.50~~
 25 + 36.50

P.K. & washer atop R.R. spike
 4.8' Lt. & Pavement



E R/W S.R. #105

County Sandusky S.R. #105

Date 6/30/82

Township Wood

Weather sunny

Section 31

Temp. 66°

T6N, R13E

Personnel Cronin

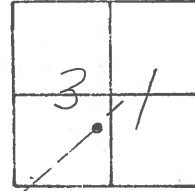
Ripple

Geyman

Mosser

Barbour

#1

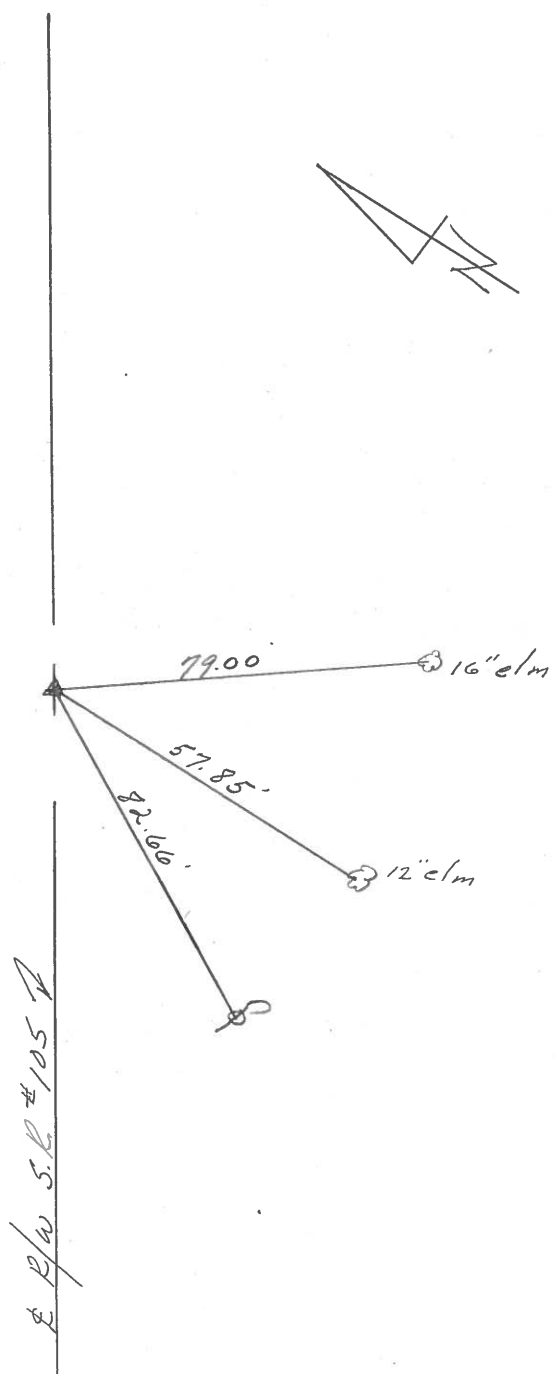


P.I. $\Delta = 6^{\circ}06'$ Rt.

25+36.50

P.K. ϵ washer at top R.R spike

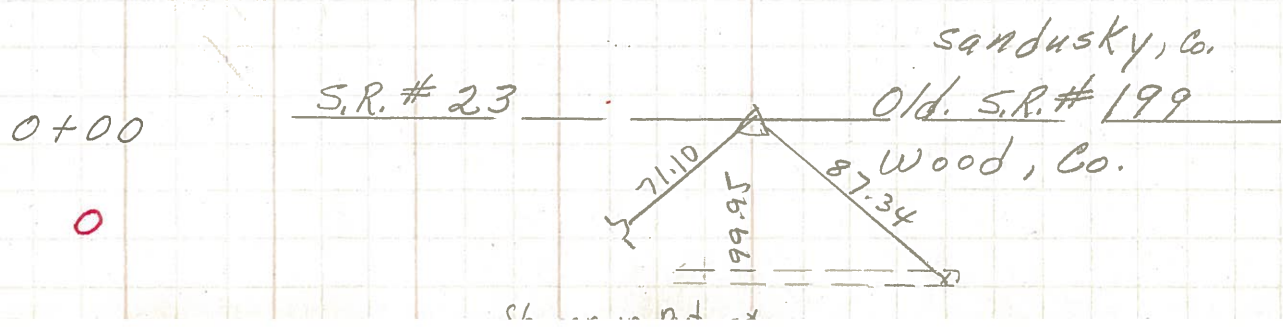
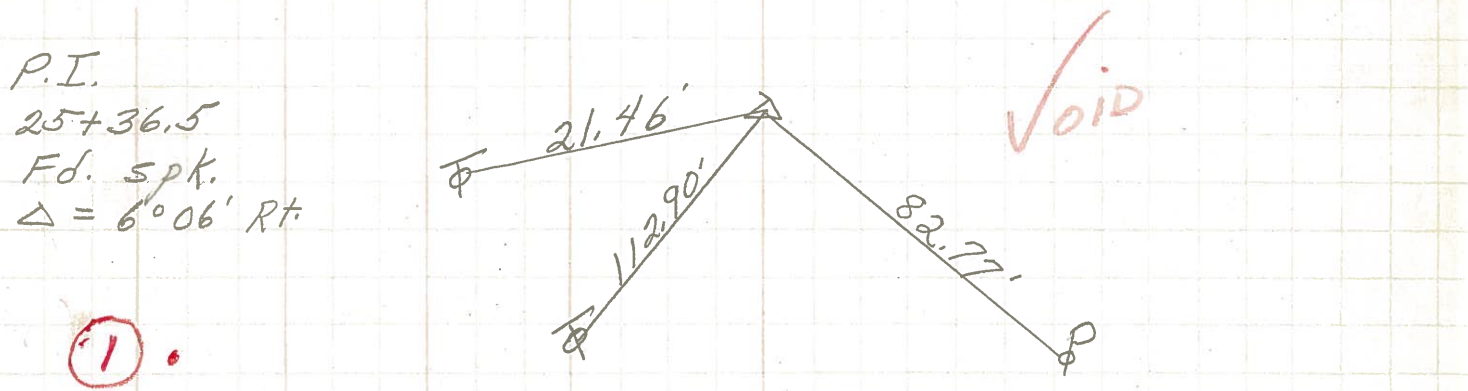
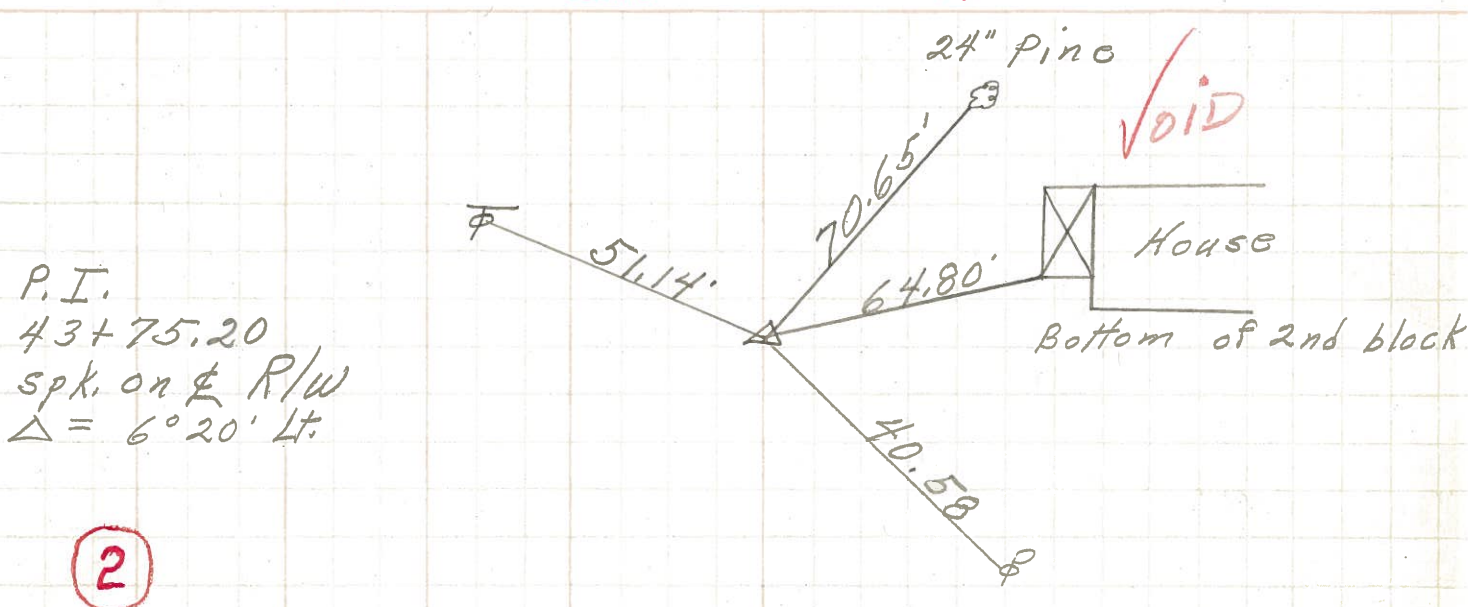
4.8' Lt. ϵ Pavement



ϵ R/W S.R. #105 ϵ

PERSONNEL	TITLE	PERSONNEL	TITLE	COUNTY	DATE
Schneider				Sandusky	5-18-72
Mosser				S. R. 105	WEATHER Fair
Barbour				SEC. 6 & 31	TEMP. 50°
Geyman					

DESCRIPTION Woodville Twp. S.R. #23 to Woodville JOB NO. _____



PERSONNEL TITLE PERSONNEL TITLE

Schneider _____ Potts _____
 Mosser _____
 Barbour _____
 Redding _____

COUNTY Sandusky DATE 4-17-68

S. R. 105 WEATHER Cloudy

SEC. Wood Co. Line to Woodville TEMP. 50°

DESCRIPTION Ties for Control Points LEFT CENTER LINE RIGHT JOB NO.

