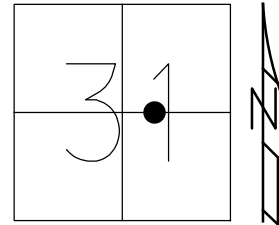


O.D.O.T. DISTRICT 2 SURVEY OFFICE (USE ONLY)

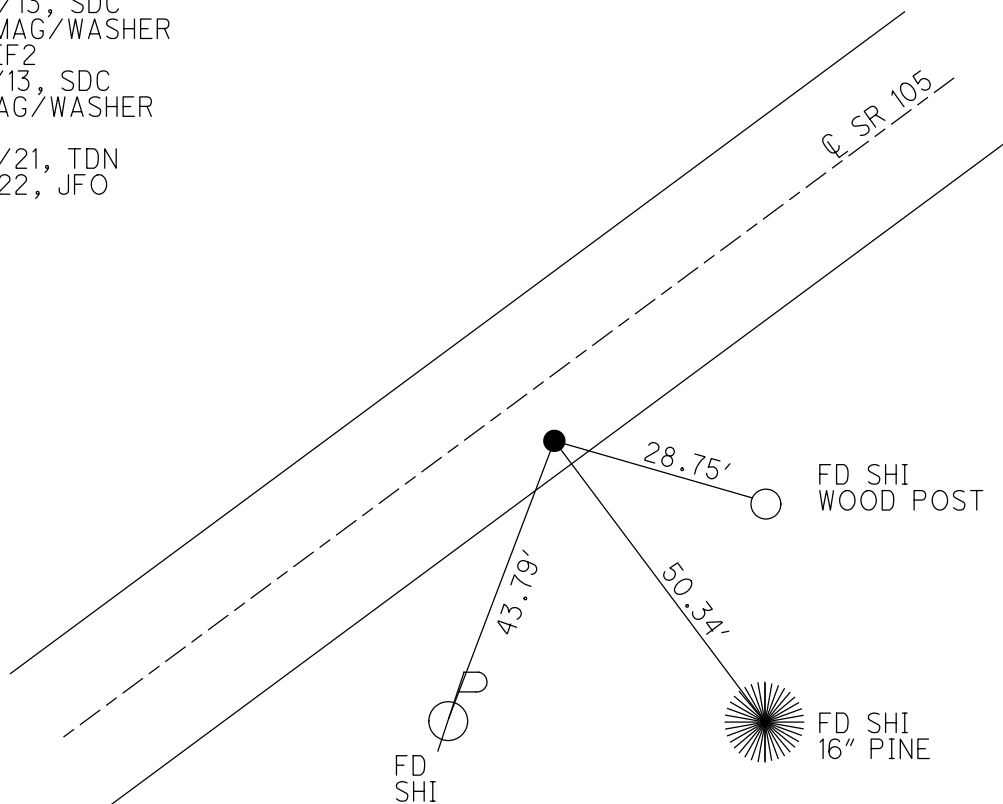
PERSONNEL \_\_\_\_\_ REFERENCE NO. 2 SHEET 3 OF 13  
 NOTES RHOADES DATE 5/25/21 ROUTE SR 105  
 H.C. NIESE WEATHER FAIR COUNTY SANDUSKY  
 R.C. RHOADES TEMP. 77° TOWNSHIP WOODVILLE  
 DWG BY RHOADES PID PVTRAIN SECTION 31  
 T 6 N R 13 E

TYPE MONUMENT MAG/WASHER  
 ON SURFACE - ~~BELOW~~ ON  
 OFFSET  $\varnothing$  PAVEMENT 7.5' ~~LT~~ : RT  
2.5' TO RT EDGE PAVEMENT  
 STATION: 43+75



HORIZ.DATUM: NAD83 2011 GEOID: NAVD88 2018  
 GRID: NORTHING: 645183.422 EASTING: 1720796.702

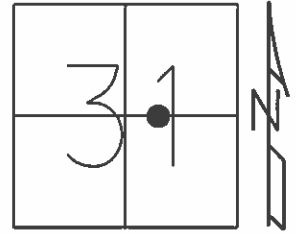
RECORD: P.I.  
 $\Delta = 6^{\circ}20' \text{ LT}$   
 FD P.K./WASHER  
 0.1" DOWN  
 SANREF3  
 4/30/13, SDC  
 SET MAG/WASHER  
 FINREF2  
 5/31/13, SDC  
 FD MAG/WASHER  
 REF2  
 5/25/21, TDN  
 4/7/22, JFO



O.D.O.T. DISTRICT 2 SURVEY OFFICE (USE ONLY)

PERSONNEL	REFERENCE NO. <u>2</u>	SHEET <u>3</u> OF <u>13</u>
NOTES <u>RHOADES</u>	DATE <u>4/30/13</u>	ROUTE <u>SR 105</u>
H.C. <u>CODER</u>	WEATHER <u>CLEAR</u>	COUNTY <u>SANDUSKY</u>
R.C. <u>LAU</u>	TEMP. <u>51°</u>	TOWNSHIP <u>WOODVILLE</u>
		SECTION <u>31</u>
		T <u>6</u> N R <u>13</u> E

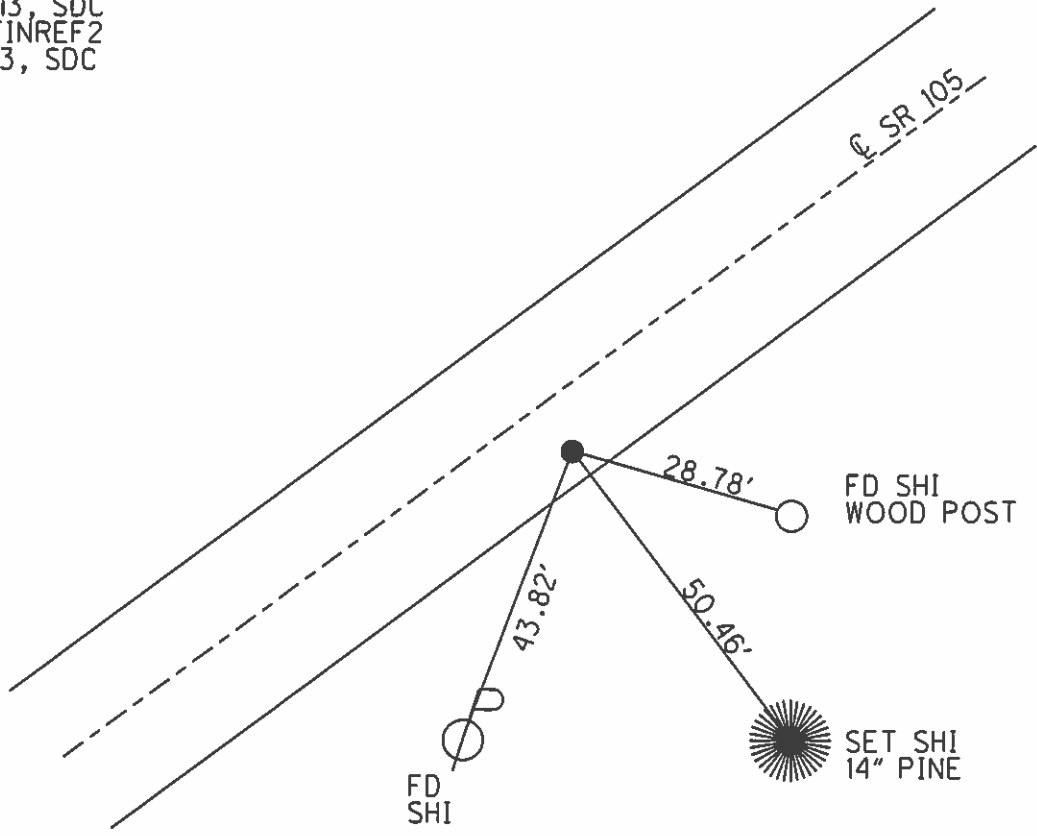
TYPE MONUMENT P.K./WASHER  
~~ON SURFACE~~ - BELOW 0.1'  
~~LEFT~~ - Q PAV'T - RIGHT 7.5'  
2.5' TO RT EDGE PAVEMENT  
 S.L.M. 43+75  
 Grid: Northing: 645183.435 Easting: 1720796.62



RECORD: P.I.  
 $\Delta = 6^\circ 20' \text{ LT}$

FD P.K. 0.1' DOWN  
 GPS, SANREF3

SET MAG/WASHER  
 5/23/13, SDC  
 GPS, FINREF2  
 5/31/13, SDC



# O.D.O.T. DISTRICT 2 SURVEY OFFICE

PERSONNEL

REFERENCE NO. 2

SHEET      OF     

NOTES P. Cheney

H.C. P. BARBONE

R.C. P. Geyman

J. Rippe

DATE 10-31-91

WEATHER Cloudy

TEMP. 60°

ROUTE 105

COUNTY SAN

TOWNSHIP Woodville

SECTION 31

T 6 N R 13 E

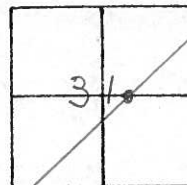
TYPE MONUMENT P.K. + Washer

~~ON SURFACE - BELOW~~ P.K. + Washer

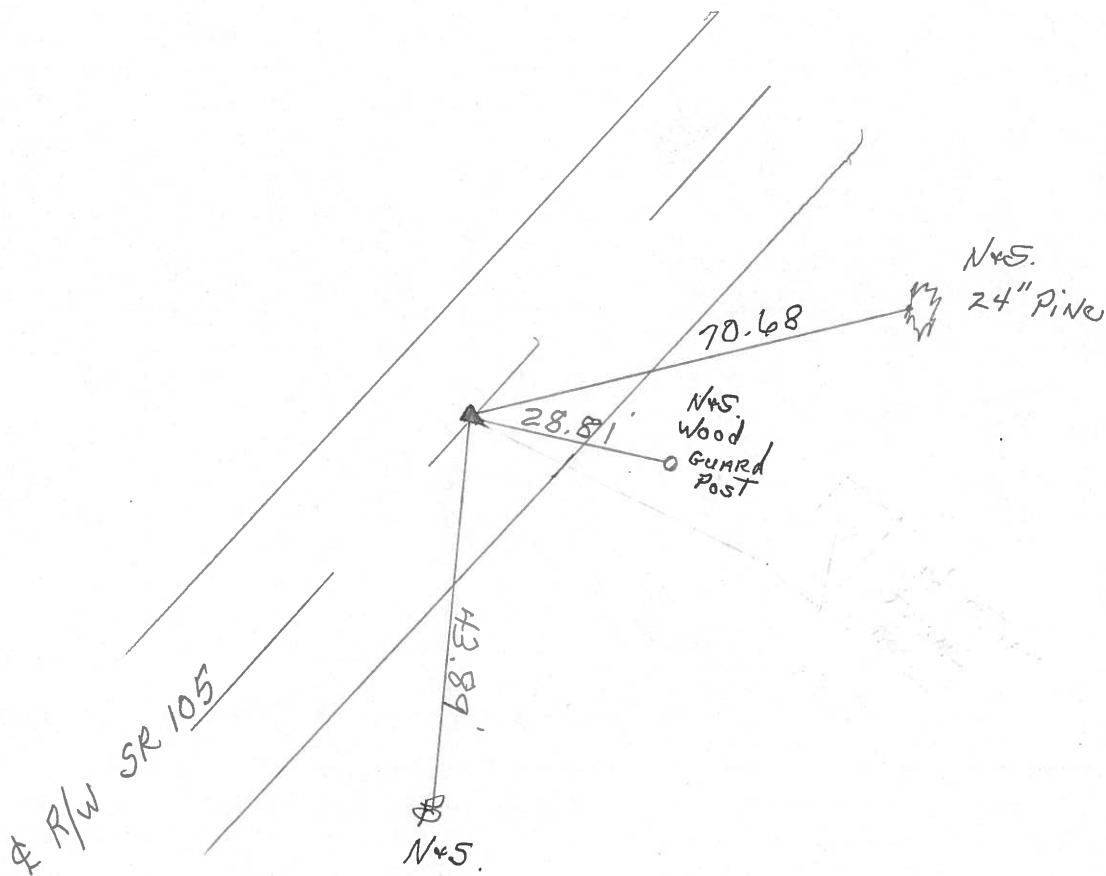
~~LEFT - C PAV'T. - RIGHT~~ 7.5' RT. &

2.5' TO RT. EDGE PAVEMENT

S.L.M. 43 + 75



$PI \Delta = 6^{\circ} 20' LT.$



County Sandusky S.R. # 105

Date 6/30/82

Township Woodville

Weather sunny

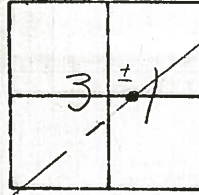
Section 31

Temp. 66°

T6N, R13E

Personnel Cronin  
Ripple  
Geyman  
Mosser  
Barbour

(2)



4/24/91 TEMP: 42°

10-31-91 CLOUDY 60°  
 CH NOTES  
 BAR-HC  
 GEY-RC  
 RIP FLAG

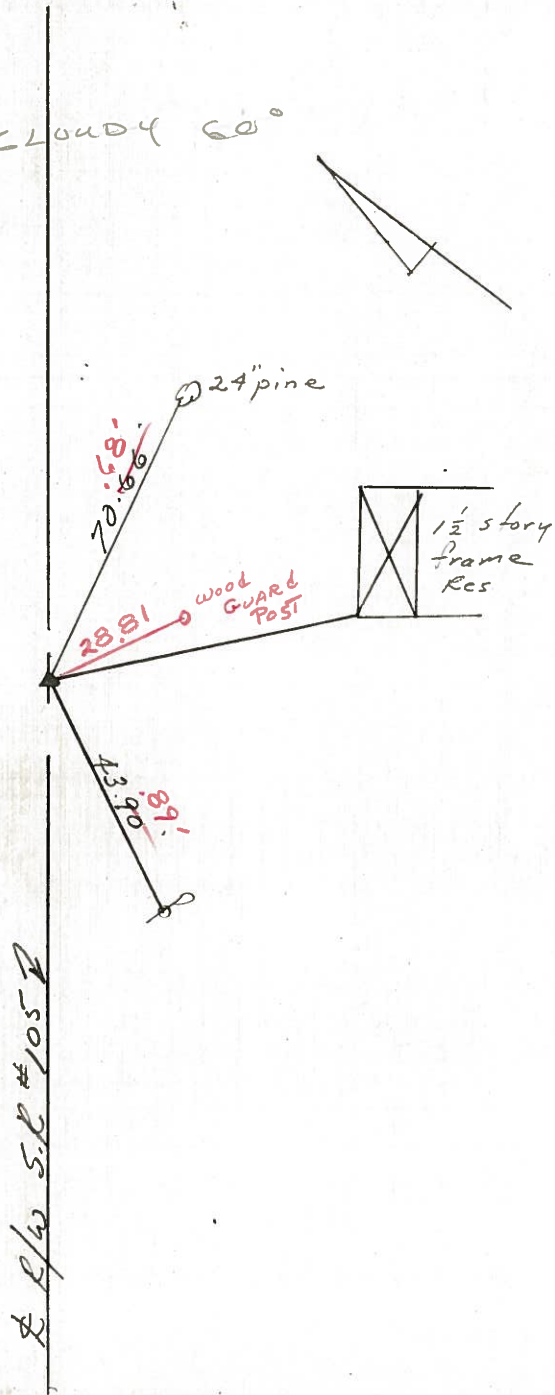
7.5 RT. &  
 2.5 RT. & IP

P.I. - Δ = 6°20' Lt.

43+75.20

P.K. & Washer at top R.R. spike

7.0' Rt. & Pavement



R/W S.R. #105

County Sandusky S.R. #105

Date 6/30/82

Township Woodville

Weather sunny

Section 31

Temp. 66°

T 6 N, R 13 E

Personnel Cronin

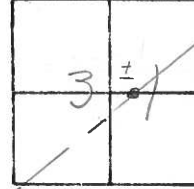
Ripple

Geuman

Mosser

Barbour

#2



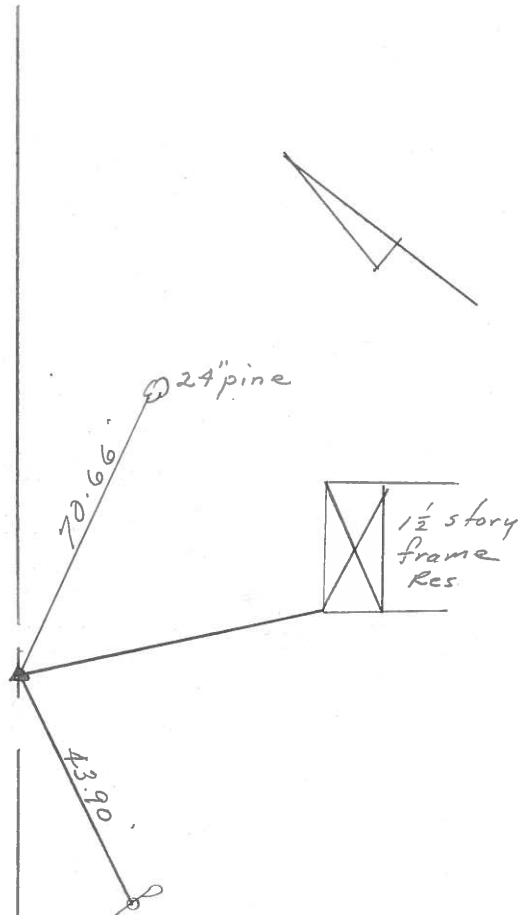
P.I. - Δ = 6°20' Lt.

43+75.20

P.K. & Washer at top R.R. spike

7.0' Rt. & Pavement

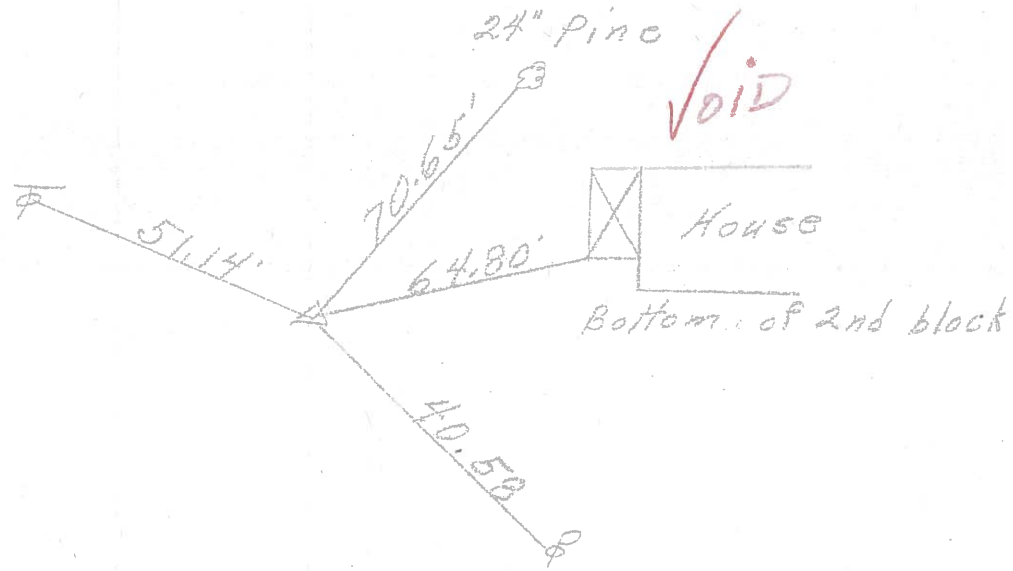
R/W S.R. #105



PERSONNEL	TITLE	PERSONNEL	TITLE	COUNTY	DATE
Schneider				Sandusky	5-18-72
Mosser				S. R. 105	WEATHER Fair
Barbour				SEC. 6 & 31	TEMP. 50°
Geyman					
DESCRIPTION				Woodville Twp. S.R. #23 to Woodville	JOB NO.

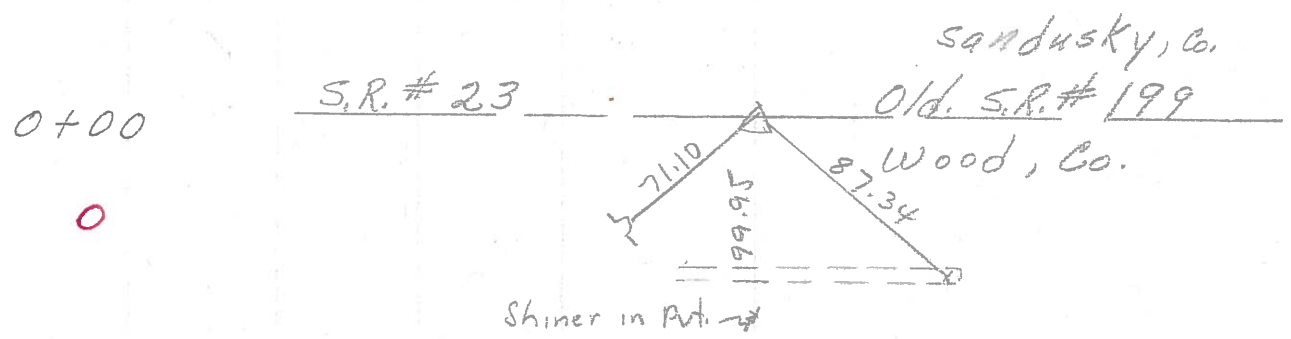
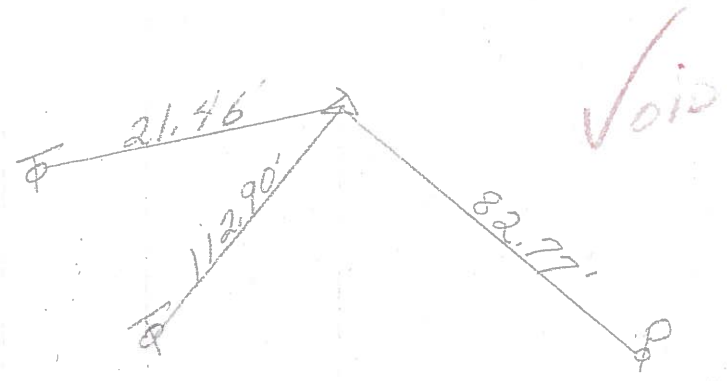
P.I.  
43+75.20  
Spk. on & R/W  
 $\Delta = 6^{\circ}20' Lt.$

2.



P.I.  
25+36.5  
Fd. Spk.  
 $\Delta = 6^{\circ}06' Rt.$

1.





PERSONNEL TITLE PERSONNEL TITLE

Schneider \_\_\_\_\_ Potts \_\_\_\_\_

COUNTY Sandusky DATE 4-17-68

Mosser \_\_\_\_\_

S. R. 105 WEATHER Cloudy

Barbour \_\_\_\_\_

SEC. Wood Co. Line to Woodville TEMP. 50°

Redding \_\_\_\_\_

DESCRIPTION Ties for Control Points JOB NO.

LEFT CENTER LINE RIGHT

