

O.D.O.T. DISTRICT 2 SURVEY OFFICE (USE ONLY)

PERSONNEL

REFERENCE NO. 4

SHEET 5 OF 13

NOTES RHOADES DATE 5/25/21

ROUTE SR 105

H.C. NIESE WEATHER FAIR

COUNTY SANDUSKY

R.C. RHOADES TEMP. 79°

TOWNSHIP WOODVILLE

SECTION 31

DWG BY RHOADES PID PVTRAIN

T 6 N R 13 E

TYPE MONUMENT P.K./WASHER

ON SURFACE - ~~BELOW~~ ON

OFFSET Q PAVEMENT 2.5' ~~ET~~ : RT

7.7' TO RT EDGE PAVEMENT

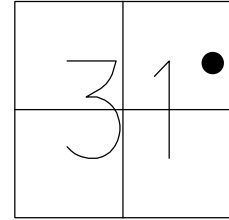
STATION: 69+39.5

HORIZ.DATUM: NAD83 2011

GEOID: NAVD88 2018

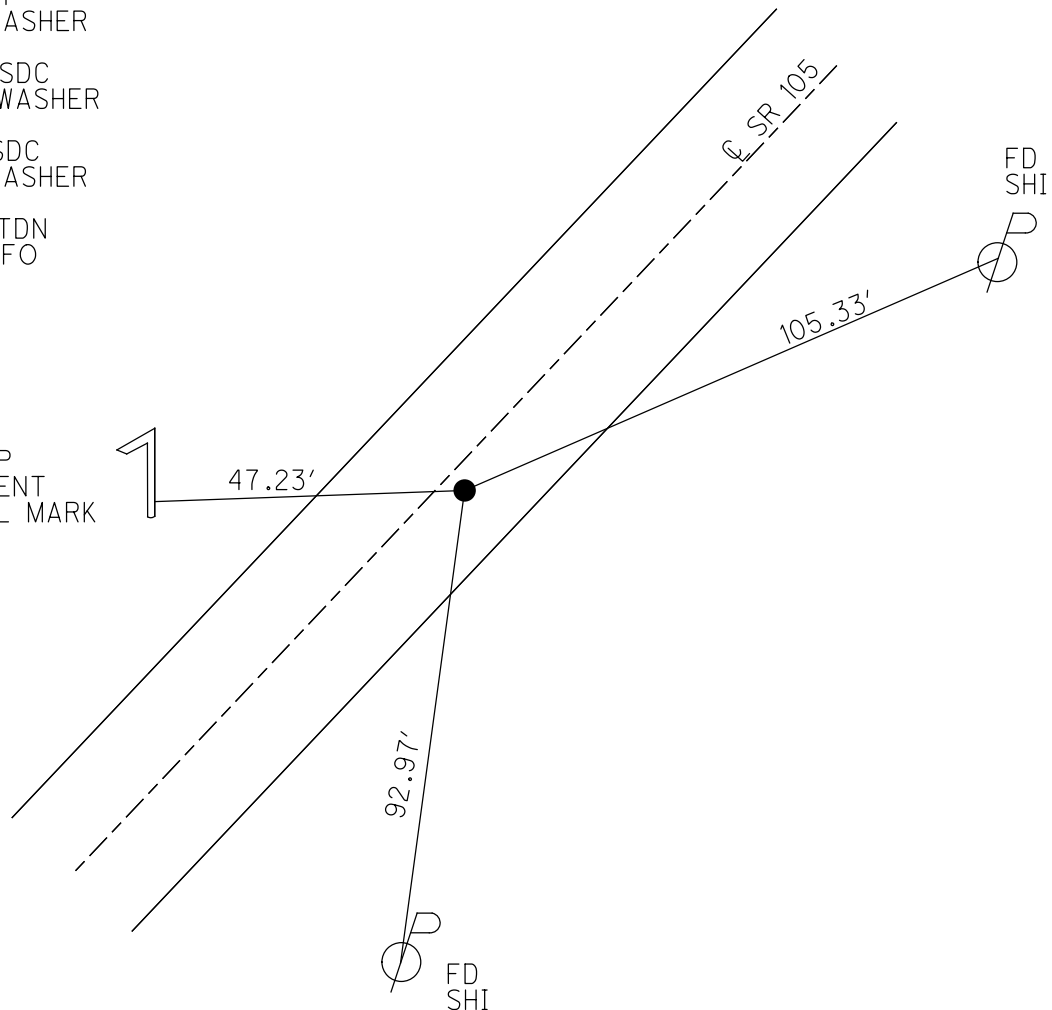
GRID: NORTHING: 646985.189

EASTING: 1722625.766



RECORD: P.I.
 $\Delta = 1^{\circ}10'$ RT
 FD P.K./WASHER
 SANREF5
 4/30/13, SDC
 SET MAG/WASHER
 FINREF4
 5/31/13, SDC
 FD P.K./WASHER
 REF4
 5/25/21, TDN
 4/7/22, JFO

1.2' UP
 G.L.VENT
 CHISEL MARK



O.D.O.T. DISTRICT 2 SURVEY OFFICE (USE ONLY)

PERSONNEL

REFERENCE NO. 4

SHEET 5 OF 13

NOTES RHOADES

DATE 4/30/13

ROUTE SR 105

H.C. CODER

WEATHER CLEAR

COUNTY SANDUSKY

R.C. LAU

TEMP. 51°

TOWNSHIP WOODVILLE

SECTION 31

T 6 N R 13 E

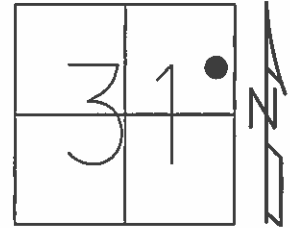
TYPE MONUMENT P.K./WASHER

ON SURFACE - ~~BELOW~~ ON

~~LEFT~~ - CL PAV'T - RIGHT 2.5'

7.7' TO RT EDGE PAVEMENT

S.L.M. 69+39.5

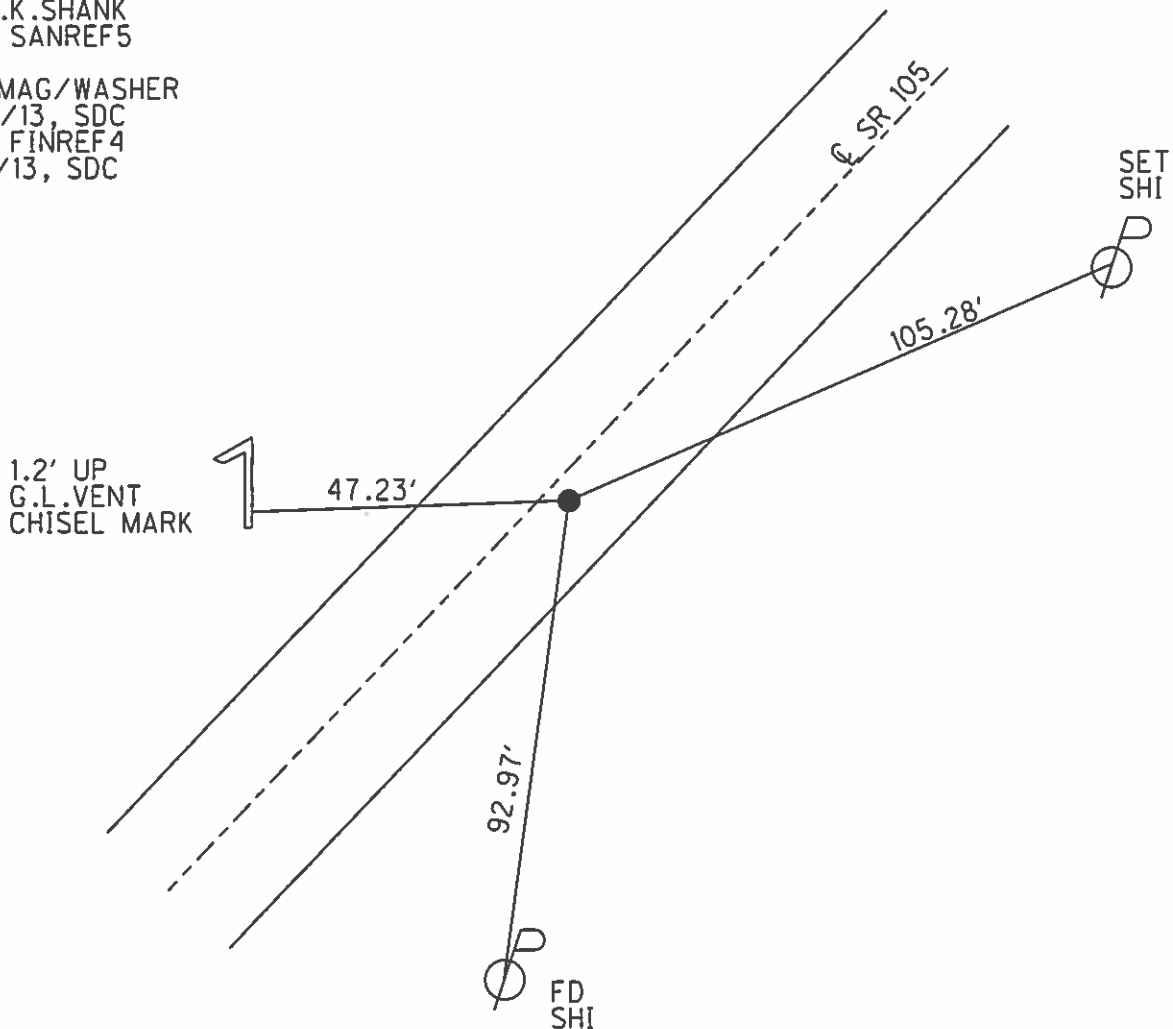


Grid: Northing: 646985.204 Easting: 1722625.634

RECORD: P.I.
 $\Delta = 1^\circ 10' \text{ RT}$

FD P.K. SHANK
 GPS, SANREF5

SET MAG/WASHER
 5/23/13, SDC
 GPS, FINREF4
 5/31/13, SDC



O.D.O.T. DISTRICT 2 SURVEY OFFICE

PERSONNEL

REFERENCE NO. 4

SHEET OF

NOTES R. Cheney

H.C. R. Barbour

R.C. R. Geyman

J. Ripple

DATE 10-31-91

WEATHER Cloudy

TEMP. 60°

ROUTE 105

COUNTY SAN.

TOWNSHIP Woodville

SECTION 31

T. 6 N R. 13 E

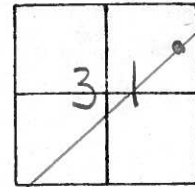
TYPE MONUMENT P.K. & Washer

~~ON SURFACE - BELOW~~ P.K. & Washer

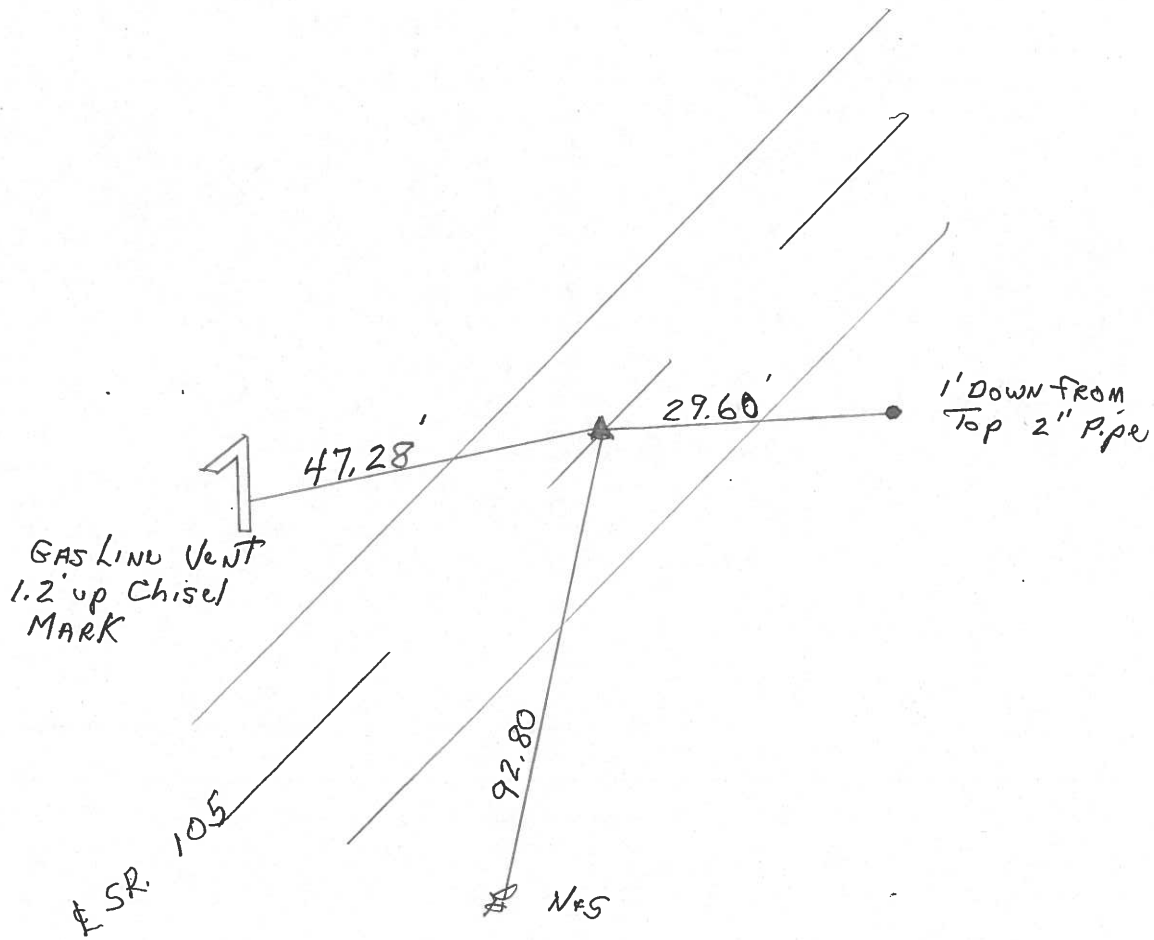
~~LEFT - C. PAV'T. - RIGHT~~ 2.5'

7.7 TO RT. EDGE PAVEMENT

S.L.M. 69 + 39.5



P.I. $\Delta = 1^{\circ} 10' RT.$



County Sandusky S.R. # 105

Township Woodville

Section 31

T6N, R13E

Personnel Cronin

Ripple

Geyman

Mosser

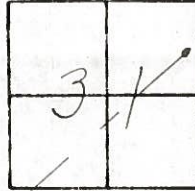
Barbour

Date 6/30/82

Weather sunny

Temp. 66°

(4)



4/24/91
Temp. 42°

is 31-51 Cloudy 60°

CH - ~~10~~

BAR - 11C

GET - 12C

RIP - F24C

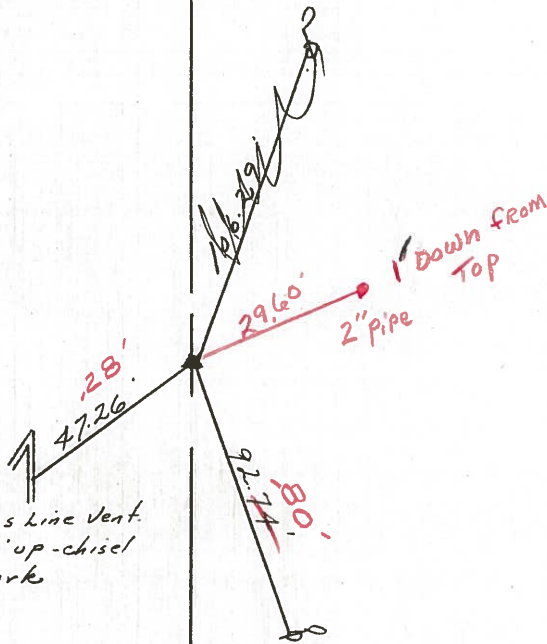
P.I. - Δ = 1° 10' RT

69439.50

P.K. 6' Washer atop R.R.

pike. 3.0' Lt. & Pavement

2.5 RT.



2:50 P.M.

7.7' RT EAP

County Sandusky S.R. #105

Date 6/30/82

Township Woodville

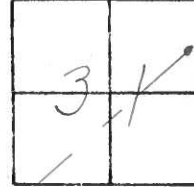
Weather sunny

Section 31

Temp. 66°

T6N, R13E

Personnel Cronin



#4

Ripple

Geyman

Mosser

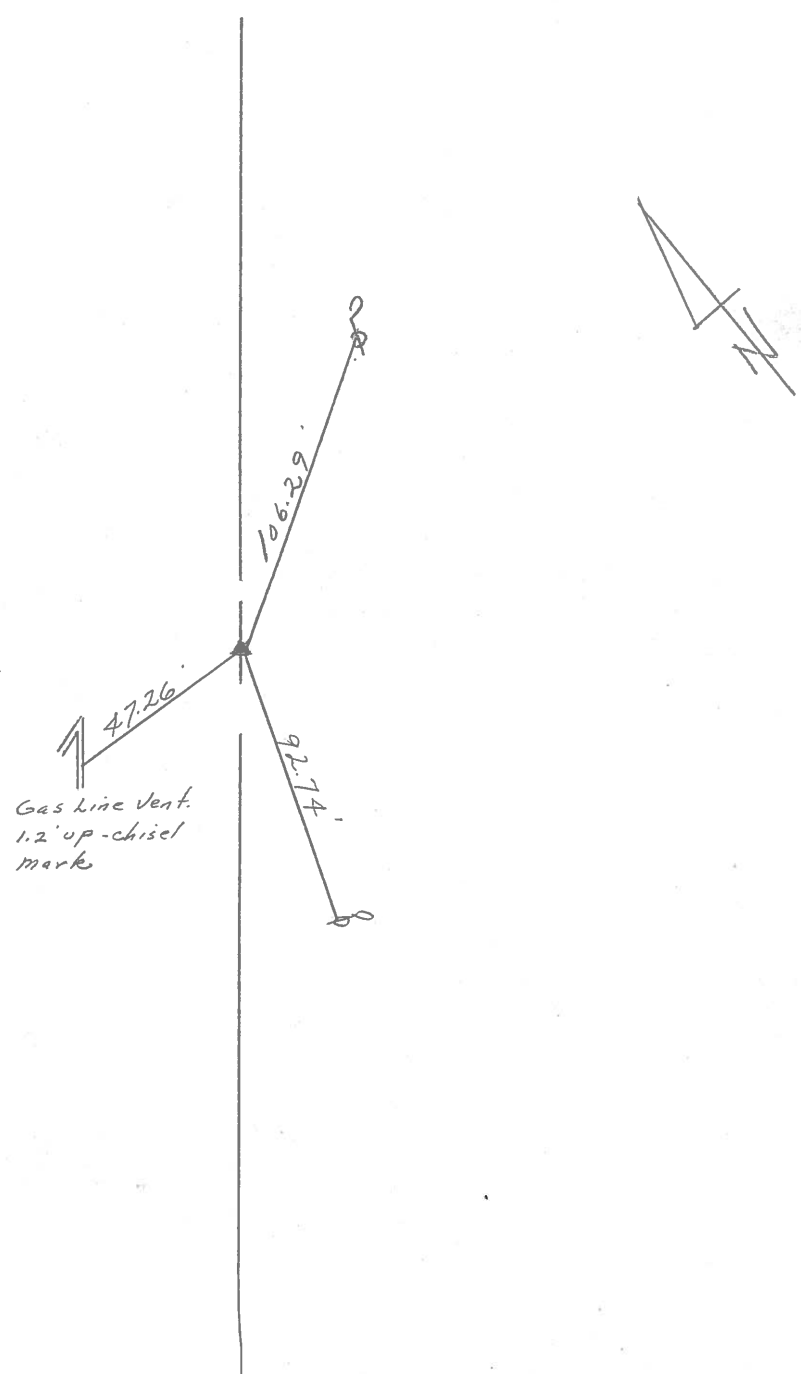
Barbour

P.I. - Δ = 1° 10' Lt

69+39.50

P.K. & Washer atop R.R.

spike. 3.0 ft. & Pavement

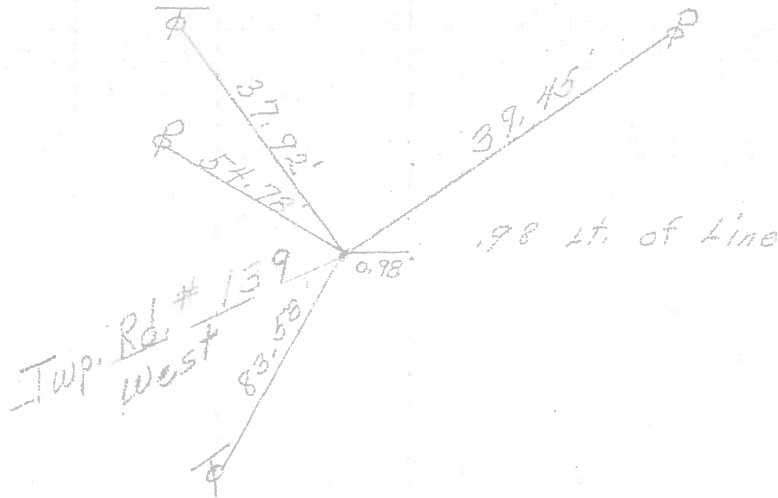


Gas line vent.
1.2' up - chisel
mark

PERSONNEL	TITLE	PERSONNEL	TITLE	COUNTY	DATE
<u>Schneider</u>				<u>Sandusky</u>	<u>5-18-72</u>
				S. R. <u>105</u>	WEATHER <u>Fair</u>
				SEC. <u>31 & 32</u>	TEMP. <u>55°</u>
DESCRIPTION	<u>Woodville Twp.</u>	LEFT	CENTER LINE	<u>SR. # 23 to Woodville</u>	RIGHT
					JOB NO.

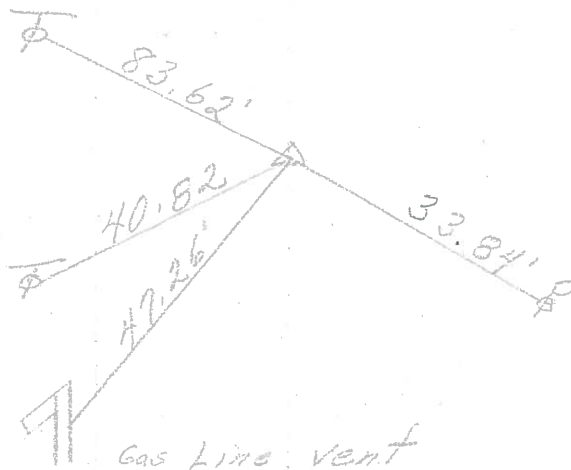
84+67.2
Small spk.

5



P.I.
69+39.50
Measured &
Turned angle
set spk. (2 1/2" Rt of L)
 $\Delta = 10^{\circ} 10'$ Rt.

4



P.I.
52+21.40
Spk. on & R/w
 $\Delta = 20^{\circ} 39'$ Lt.

3

