

O.D.O.T. DISTRICT 2 SURVEY OFFICE (USE ONLY)

PERSONNEL

REFERENCE NO. 5

SHEET 6 OF 13

NOTES RHOADES

DATE 5/25/21

ROUTE SR 105

H.C. NIESE

WEATHER FAIR

COUNTY SANDUSKY

R.C. RHOADES

TEMP. 77°

TOWNSHIP WOODVILLE

SECTION 32

DWG BY RHOADES

PID PVTRAIN

T 6 N R 13 E

TYPE MONUMENT MAG/WASHER

ON SURFACE - ~~BELOW~~ ON

OFFSET Q PAVEMENT 2.5' LT : ~~RT~~

13.5' TO RT EDGE PAVEMENT

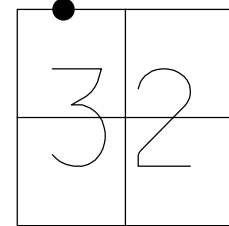
STATION: 84+67

HORZ. DATUM: NAD83 2011

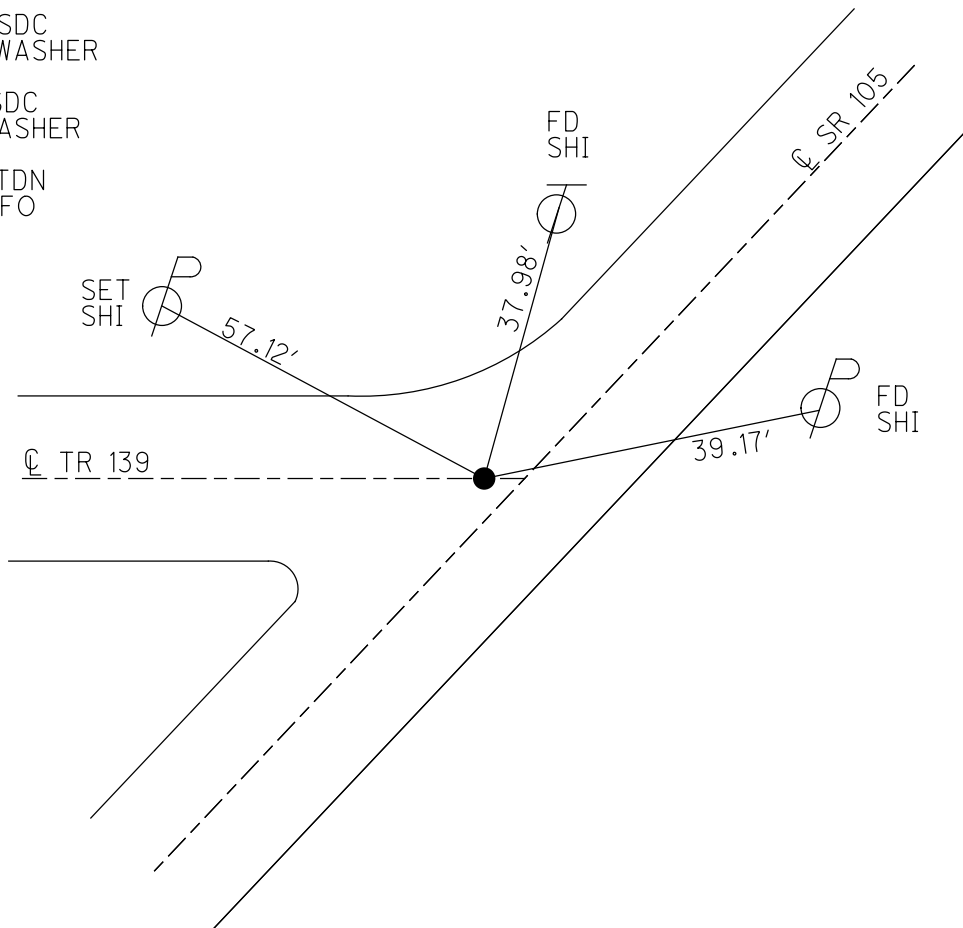
GEOID: NAVD88 2018

GRID: NORTHING: 648050.261

EASTING: 1723720.216



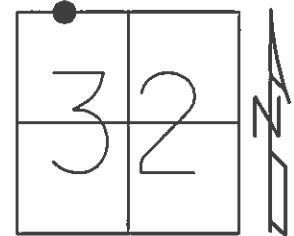
RECORD:
 FD P.K./WASHER
 0.2' DOWN
 SANREF6
 4/30/13, SDC
 SET MAG/WASHER
 FINREF5
 5/31/13, SDC
 FD MAG/WASHER
 REF5
 5/25/21, TDN
 4/7/22, JFO



O.D.O.T. DISTRICT 2 SURVEY OFFICE (USE ONLY)

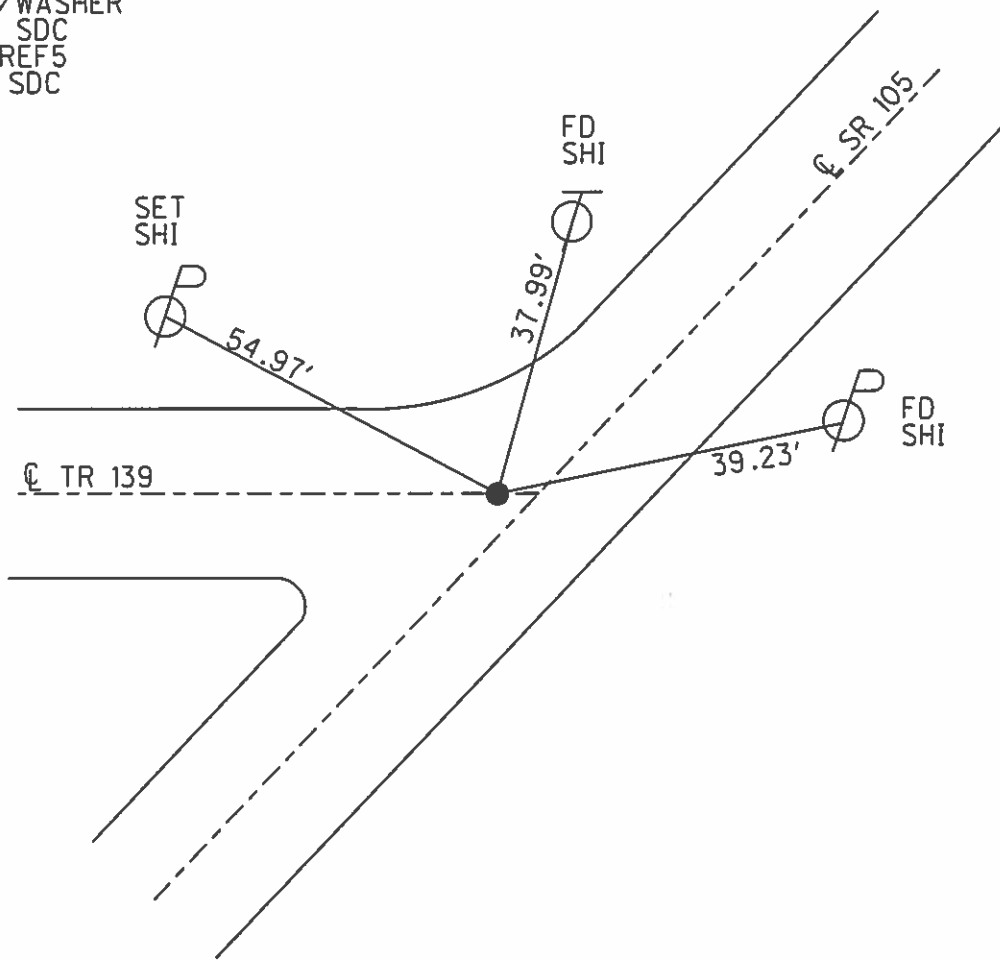
PERSONNEL _____ REFERENCE NO. 5 SHEET 6 OF 13
NOTES RHOADES DATE 4/30/13 ROUTE SR 105
H.C. CODER WEATHER CLEAR COUNTY SANDUSKY
R.C. LAU TEMP. 51° TOWNSHIP WOODVILLE
SECTION 32
T 6 N R 13 E

TYPE MONUMENT P.K./WASHER
~~ON SURFACE~~ - BELOW 2"
LEFT - C PAV'T - ~~RIGHT~~ 2.5'
13.5' TO RT EDGE PAVEMENT
S.L.M. 84+67
Grid: Northing: 648050.283 Easting: 1723720.169



FD P.K. 0.2' DOWN
GPS, SANREF6

SET MAG/WASHER
5/23/13, SDC
GPS, FINREF5
5/31/13, SDC



O.D.O.T. DISTRICT 2 SURVEY OFFICE

PERSONNEL

REFERENCE NO. 5

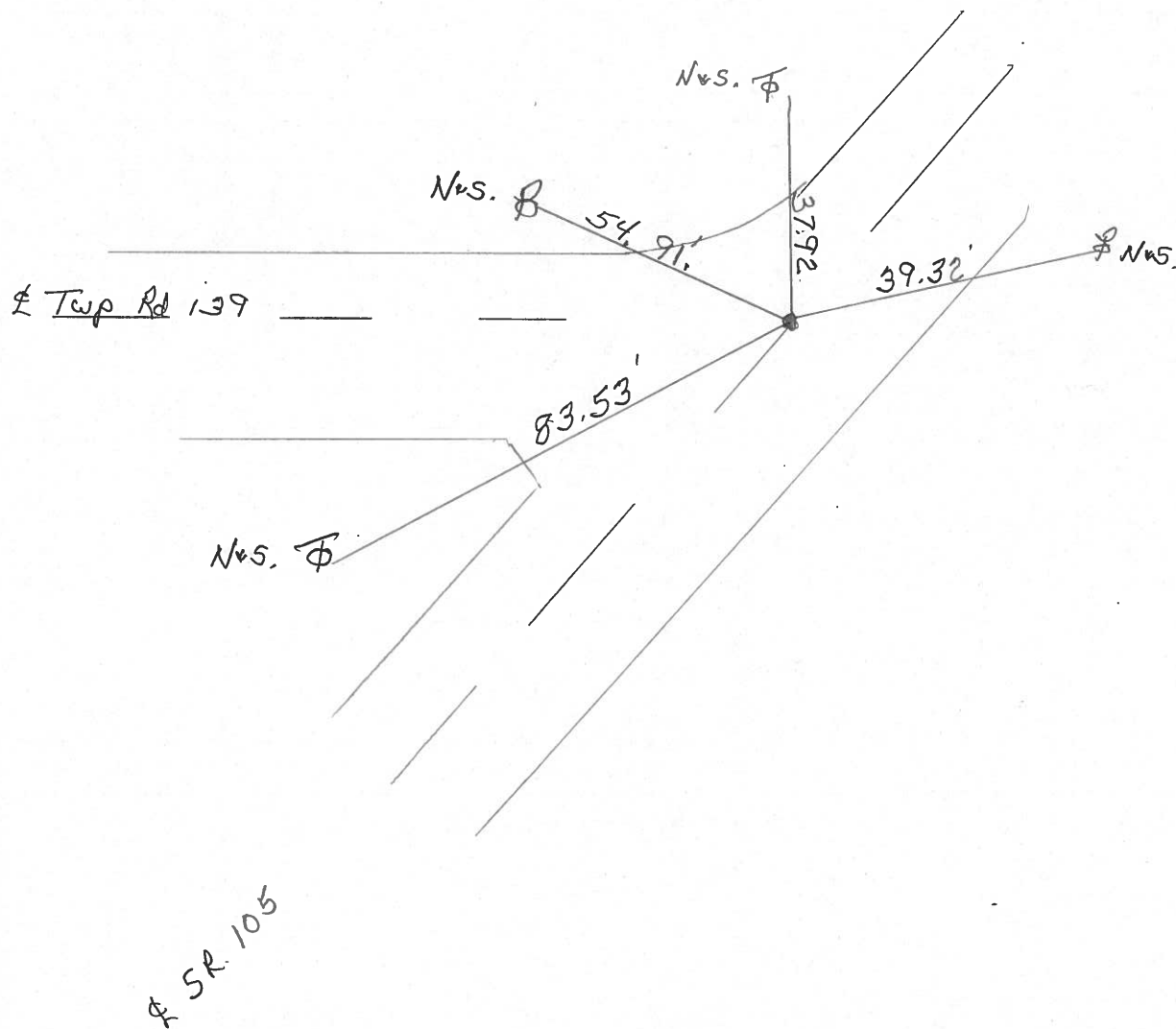
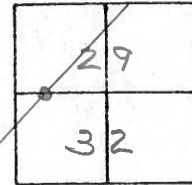
SHEET OF

NOTES P. Cheney
 H.C. P. Barbour
 R.C. P. Geyman
J. Ripple

DATE 10-31-91
 WEATHER Cloudy
 TEMP. 60°

ROUTE 105
 COUNTY SAN.
 TOWNSHIP Woodville
 SECTION 29 & 32
T 6 N R 13 E

TYPE MONUMENT P.K. Washer
~~ON SURFACE - BELOW~~ P.K. Washer
~~LEFT - C PAV'T - RIGHT~~ 2.5 FT.
13.5 TO RT. EDGE PAVEMENT
S.L.M. 84 & 67



County Sandusky S.R. #105

Date 6/30/82

Township Woodville

Weather sunny

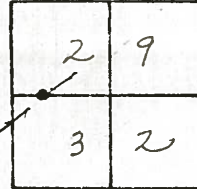
Section 29 E 32

Temp. 68°

T6N, R13E

Personnel Cronin
Ripple
Geyman
Masser
Barbour

(5)



10-31-91 CLOUDY 60°

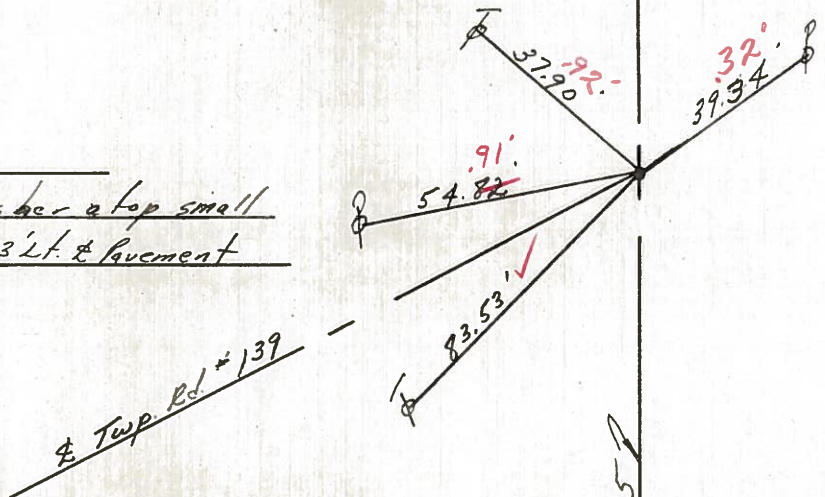
4/24/91
Temp. 42°

CH H
 BAR HC
 GEY RC
 RIP HAO



2.5' LT E
 13.5' RT EP

84+67.20
 P.K. washer atop small
 R.R. spike - 3' LT. & pavement



R.R. S.R. #105

County Sandusky S.R. #105

Date 6/30/82

Township Woodville

Weather sunny

Section 29, E 32

Temp. 68°

T6N, R13E

Personnel Cronin

Ripple

Geuman

Masser

Barbour

#5

2	9
3	2



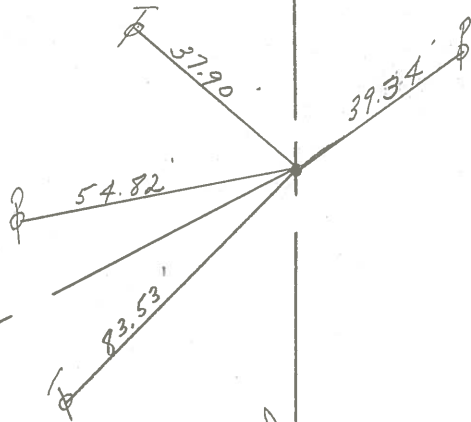
84+67.20

P.K. 6' washer atop small

R.R spike - 3' L.F. & pavement

± Twp. Rd. #139

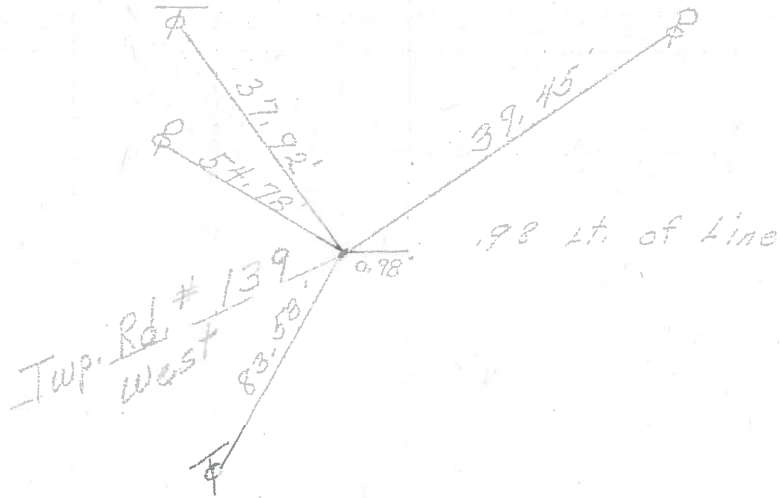
± R/W S.R. #105



PERSONNEL	TITLE	PERSONNEL	TITLE	COUNTY	DATE
Schreider				Sandusky	5-18-72
				S. R. 105	WEATHER Fair
				SEC. 31 & 32	TEMP 55°
DESCRIPTION	Woodville Twp.	SR # 23 to Woodville			JOB NO.
	LEFT	CENTER LINE	RIGHT		

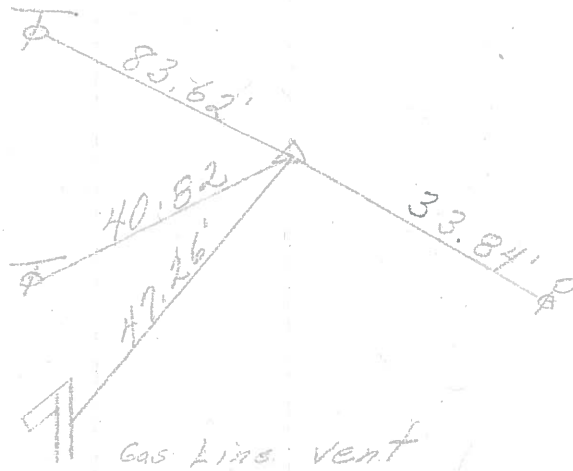
84+68.2
Small spk.

5



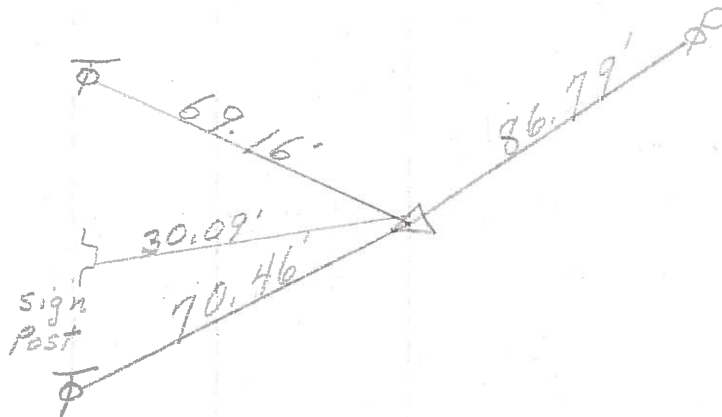
P.I.
69+39.5
Measured &
Turned angle
set spk. (2 1/2' Rt of L)
 $\Delta = 10^{\circ} 10'$ Rt.

4



P.I.
52+21.40
Spk. on L/R/W
 $\Delta = 2^{\circ} 39'$ Lt.

3



PERSONNEL TITLE PERSONNEL TITLE

Schneider _____ Potts _____
Mosser _____
Barbour _____
Redding _____

COUNTY Sandusky DATE 4-17-68

S. R. 105 WEATHER Cloudy

SEC. Wood Co. Line to woodville TEMP. 50°

DESCRIPTION Ties for C LEFT CENTER LINE RIGHT JOB NO.

LEFT	CENTER LINE	RIGHT
160+45.50 7468		did not find
137+87.30 7467		did not find
125+06.90 R.R. 7" down 7466		
108+11.6 7465		did not find
P. I. 87+49.50 Spk. on R/W Lt. of E 7464		
P. I. 69+39.50 7463		did not find