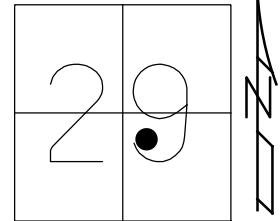


O.D.O.T. DISTRICT 2 SURVEY OFFICE (USE ONLY)

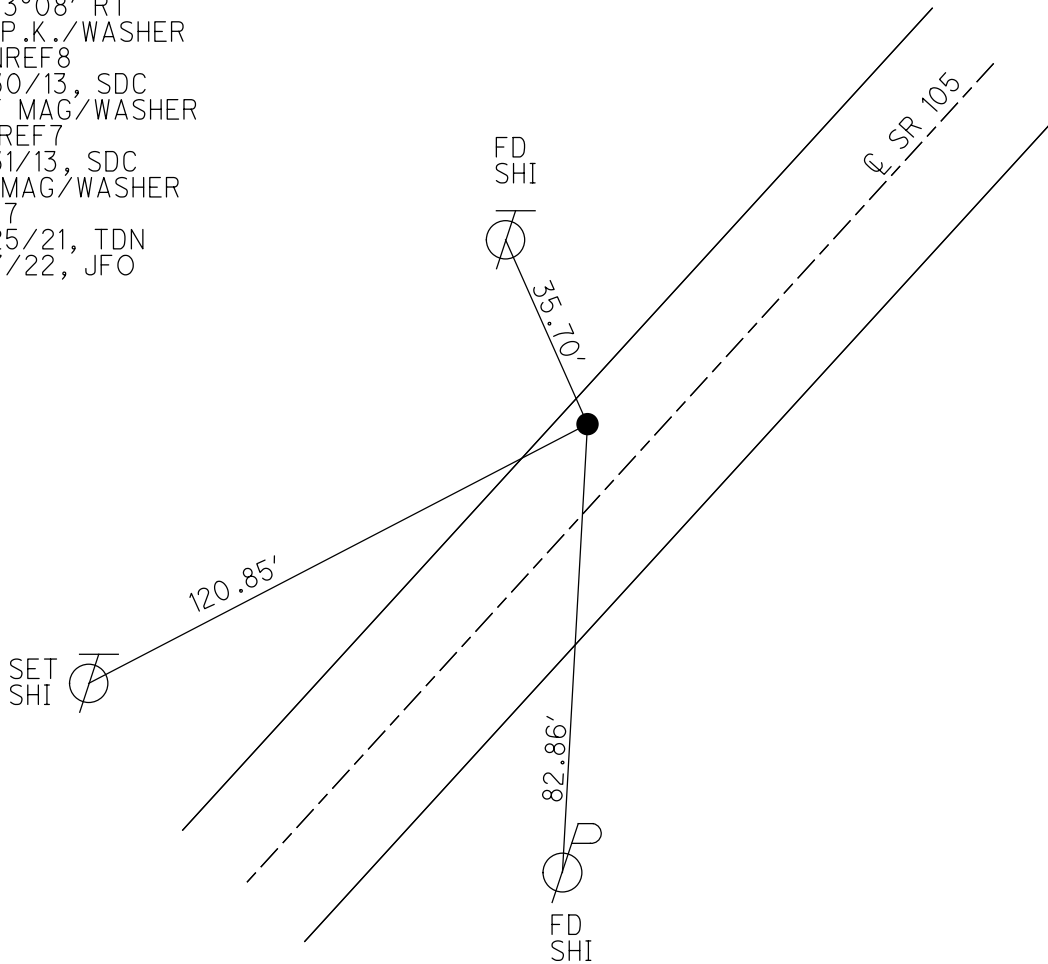
PERSONNEL _____ REFERENCE NO. 7 SHEET 8 OF 13
 NOTES RHOADES DATE 5/25/21 ROUTE SR 105
 H.C. NIESE WEATHER FAIR COUNTY SANDUSKY
 R.C. RHOADES TEMP. 77° TOWNSHIP WOODVILLE
 SECTION 29
 DWG BY RHOADES PID PVTRAIN T 6 N R 13 E

TYPE MONUMENT MAG/WASHER
 ON SURFACE - ~~BELOW~~ ON
 OFFSET ☑ PAVEMENT 7' LT : ~~RT~~
3' TO LT EDGE PAVEMENT
 STATION: 108+11.6



HORZ. DATUM: NAD83 2011 GEOID: NAVD88 2018
 GRID: NORTHING: 649738.715 EASTING: 1725645.575

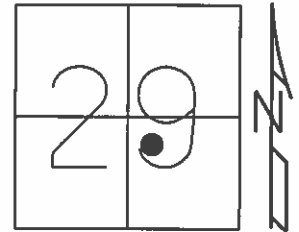
RECORD: P.I.
 $\Delta = 3^{\circ}08'$ RT
 FD P.K./WASHER
 SANREF8
 4/30/13, SDC
 SET MAG/WASHER
 FINREF7
 5/31/13, SDC
 FD MAG/WASHER
 REF7
 5/25/21, TDN
 4/7/22, JFO



O.D.O.T. DISTRICT 2 SURVEY OFFICE (USE ONLY)

PERSONNEL	REFERENCE NO. <u>7</u>	SHEET <u>8</u> OF <u>13</u>
NOTES <u>RHOADES</u>	DATE <u>4/30/13</u>	ROUTE <u>SR 105</u>
H.C. <u>CODER</u>	WEATHER <u>CLEAR</u>	COUNTY <u>SANDUSKY</u>
R.C. <u>LAU</u>	TEMP. <u>51°</u>	TOWNSHIP <u>WOODVILLE</u>
		SECTION <u>29</u>
		T <u>6</u> N R <u>13</u> E

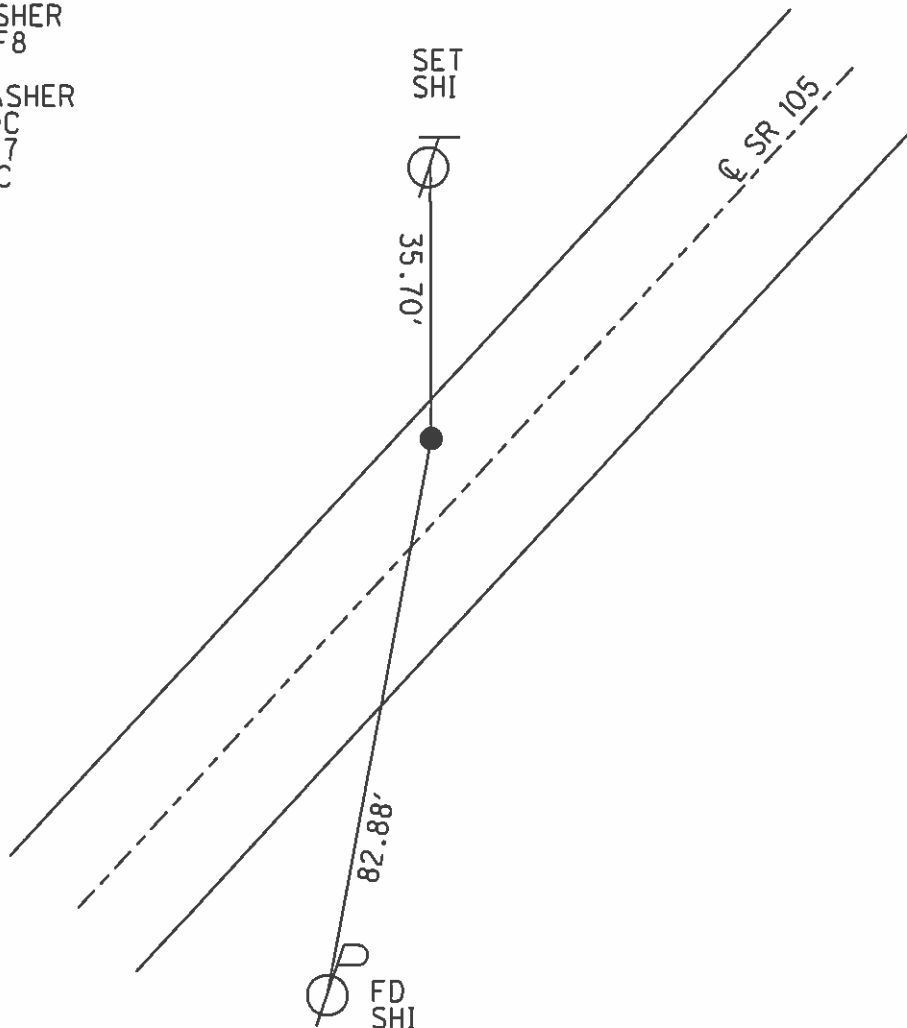
TYPE MONUMENT P.K./WASHER
~~ON SURFACE~~ - BELOW 2"
 LEFT - Q PAV'T - ~~RIGHT~~ 7'
3' TO LT EDGE PAVEMENT
 S.L.M. 108+11.6
 Grid: Northing: 649738.744 Easting: 1725345.564



RECORD: P.I.
 $\Delta = 3^\circ 08' RT$

FD P.K./WASHER
 GPS, SANREF8

SET MAG/WASHER
 5/23/13, SDC
 GPS, FINREF7
 5/31/13, SDC



O.D.O.T. DISTRICT 2 SURVEY OFFICE

PERSONNEL

REFERENCE NO. 7

SHEET OF

NOTES R. Cheney

H.C. R. BARBOUR

R.C. V. Ripple

R. Geyman

DATE 11-13-91

WEATHER Cloudy

TEMP. 45°

ROUTE 105

COUNTY SAN.

TOWNSHIP Woodville

SECTION 29

T6 N R 13 E

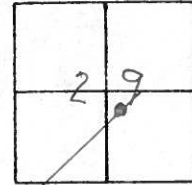
TYPE MONUMENT

~~ON SURFACE~~ - BELOW RK. Washer 2" Down

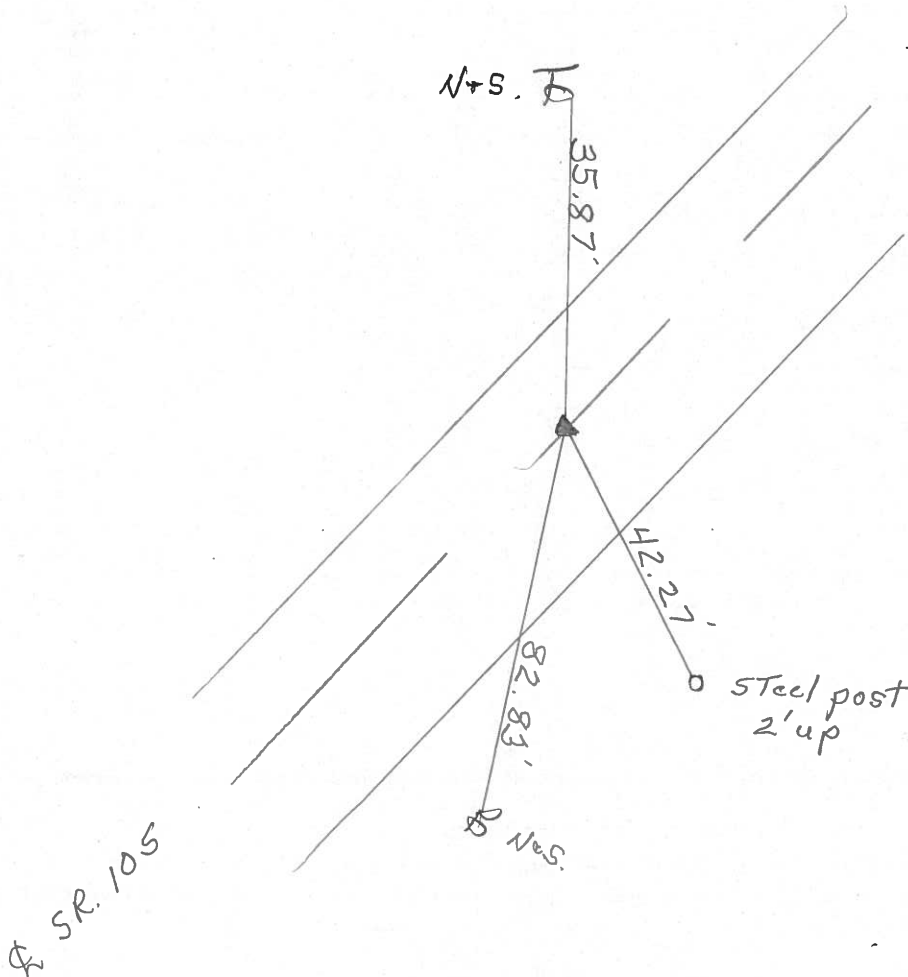
~~LEFT-CENTRE PAV'T. - RIGHT~~ 7'

3 TO RT. EDGE PAVEMENT

S.L.M. 108 + 11.6



P.I. $\Delta = 3^{\circ} 08' RT.$



County Sandusky S.R. #105

Date 6/30/82

Township Woodville

Weather sunny

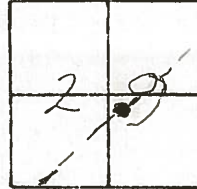
Section 29

Temp. 68°

T6N, R13E

Personnel Cronin
Ripple
Geyman
Mosser
Barbour

7



11-13-1991

CLOUDY 75° ~~SETTLE/WAS #~~

4/24/91
Temp. 42°

CH-
B-HC
R-RC
G-A

FD PK/WAS #
2" DEEP

⊕

E/P



35.87'
35.91'

42.27'
42.20'

82.77'
83'

steel post
2' up

P.I. - Δ = 3° 08' Rt.

108+11.60

P.K. 5' Washer atop R.R.

spike 6.8' Lt. & Pavement

R/W S.R. #105

County Sandusky S.R. #105

Date 6/30/82

Township Woodville

Weather sunny

Section 29

Temp. 68°

T6N, R13E

Personnel Cronin

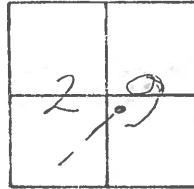
Ripple

Geyman

Mosser

Barbour

#7

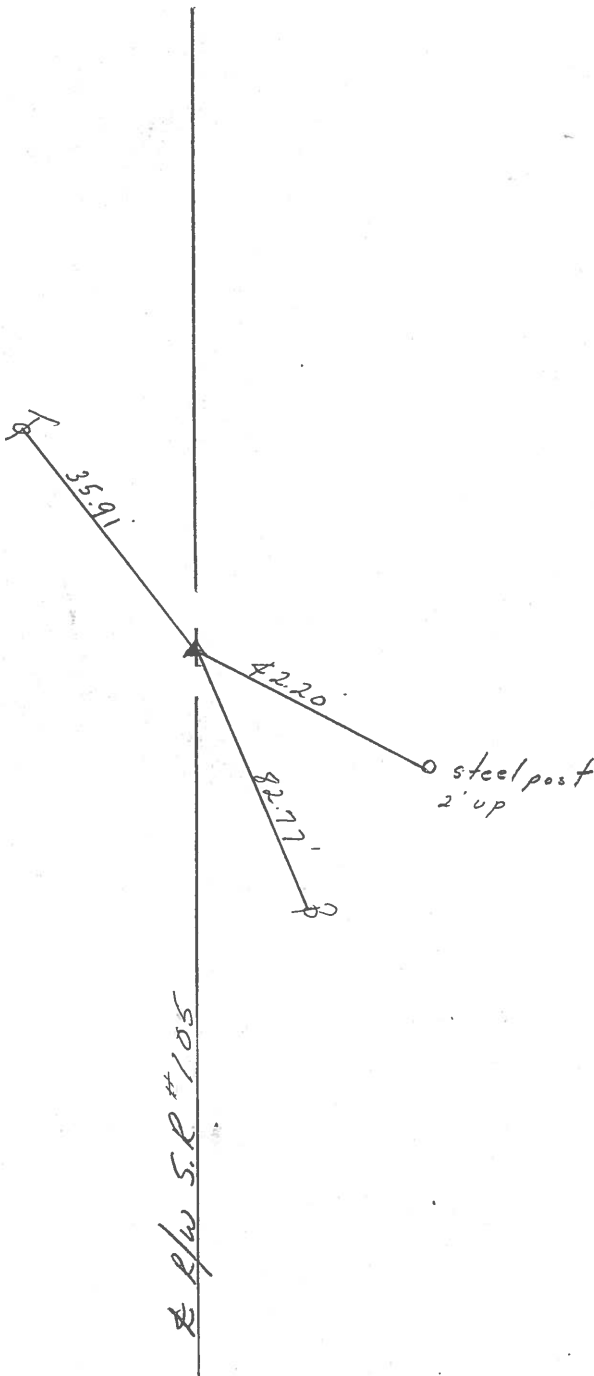


P.I. - Δ = 3° 08' Lt.

108+11.60

P.K. E. Washer at top R.R.

spike 6.8' Lt. & Pavement

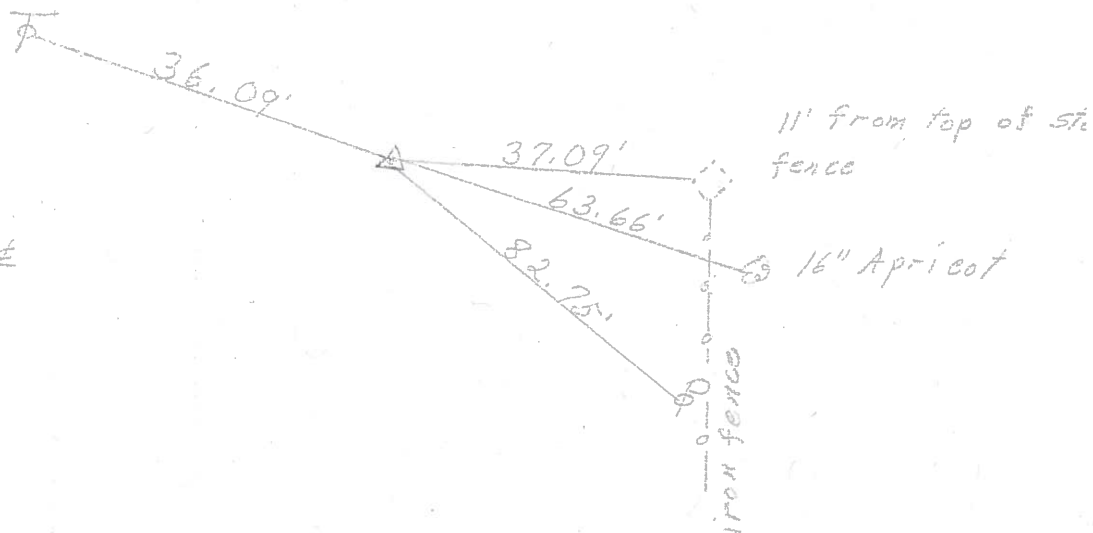


R/W S.R. #105

PERSONNEL	TITLE	PERSONNEL	TITLE	COUNTY	DATE
<u>Schneider</u>				<u>Sandusky</u>	<u>5-19-72</u>
				S. R. <u>105</u>	WEATHER <u>cloudy</u>
				SEC. <u>29</u>	TEMP. <u>50°</u>
DESCRIPTION	<u>Woodville Twp.</u>	<u>SR. # 23 to Woodville</u>			JOB NO.
	LEFT	CENTER LINE	RIGHT		

P.I.
 108+11.6
 Fd. R.R. spk.
 5" down 6.8' Lt. of \pm
 $\Delta = 3^{\circ} 08' \text{ Rt.}$

7



P.I.
 87+49.50
 Fd. R.R. spk.
 6" down
 set spk. on top
 $\Delta = 2^{\circ} 03' \text{ Lt.}$

6

