

O.D.O.T. DISTRICT 2 SURVEY OFFICE (USE ONLY)

PERSONNEL

REFERENCE NO. 10

SHEET 12 OF 13

NOTES MILLER

DATE 12/28/23

ROUTE SR 105

H.C. RHOADES

WEATHER RAIN

COUNTY SANDUSKY

R.C. MILLER

TEMP. 44°

TOWNSHIP WOODVILLE

SECTION 29

DWG BY RHOADES

PID PAVING TRAIN

T 6 N R 13 E

TYPE MONUMENT MAG/WASHER

ON SURFACE - ~~BELOW~~ ON

OFFSET CL PAVEMENT 4' LT : ~~RT~~

6.5' TO LT EDGE PAVEMENT

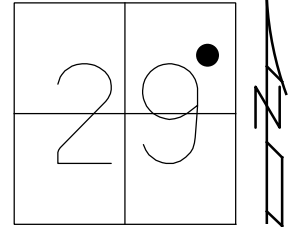
STATION: 131+87.3

HORZ. DATUM: NAD83 2011

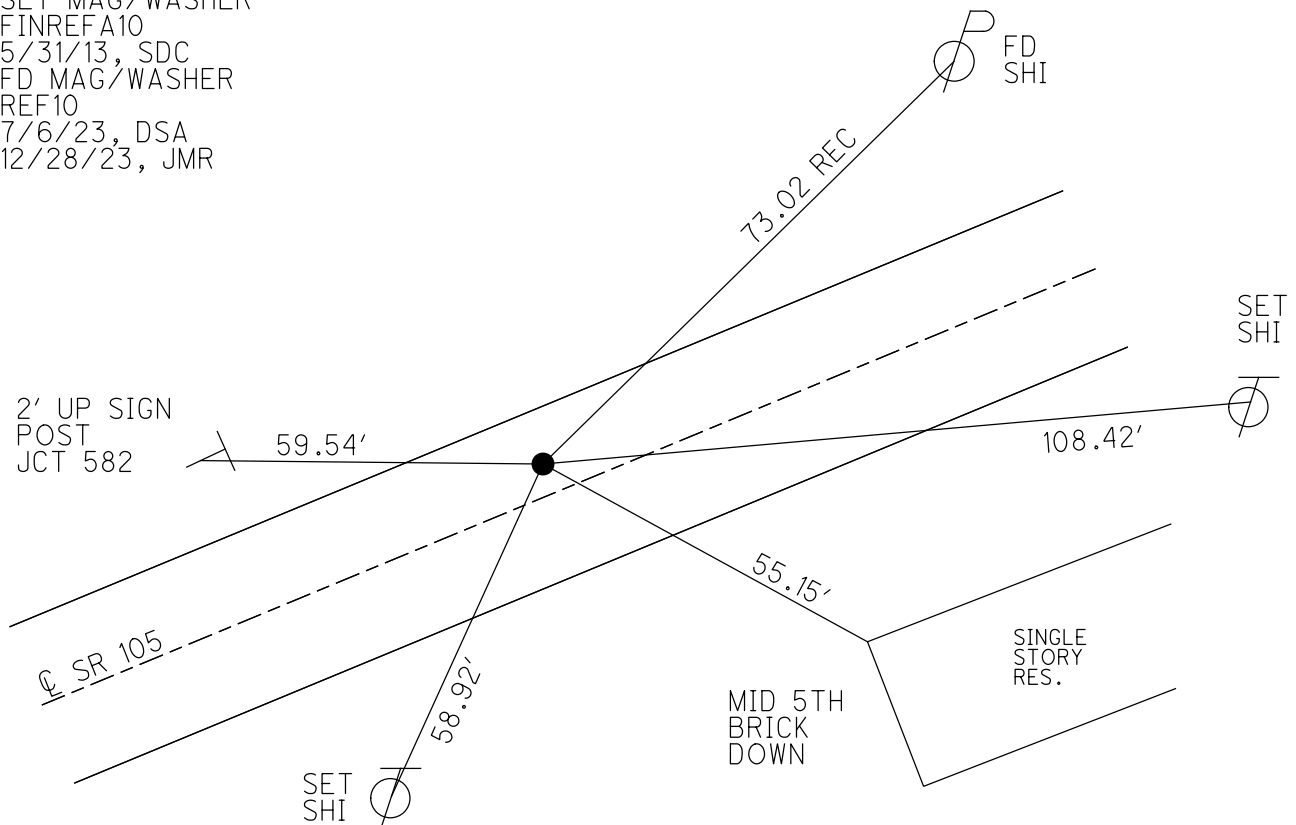
GEOID: NAVD88 2018

GRID: NORTHING: 651143.384

EASTING: 1727225.164



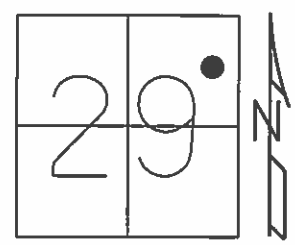
RECORD:
 FD R.R.SPIKE
 0.1' DOWN
 SANREF12
 SET MAG/WASHER
 FINREFA10
 5/31/13, SDC
 FD MAG/WASHER
 REF10
 7/6/23, DSA
 12/28/23, JMR



O.D.O.T. DISTRICT 2 SURVEY OFFICE (USE ONLY)

PERSONNEL	REFERENCE NO. <u>10</u>	SHEET <u>12</u> OF <u>13</u>
NOTES <u>RHOADES</u>	DATE <u>4/30/13</u>	ROUTE <u>SR 105</u>
H.C. <u>CODER</u>	WEATHER <u>CLEAR</u>	COUNTY <u>SANDUSKY</u>
R.C. <u>LAU</u>	TEMP. <u>51°</u>	TOWNSHIP <u>WOODVILLE</u>
		SECTION <u>29</u>
		T <u>6</u> N R <u>13</u> E

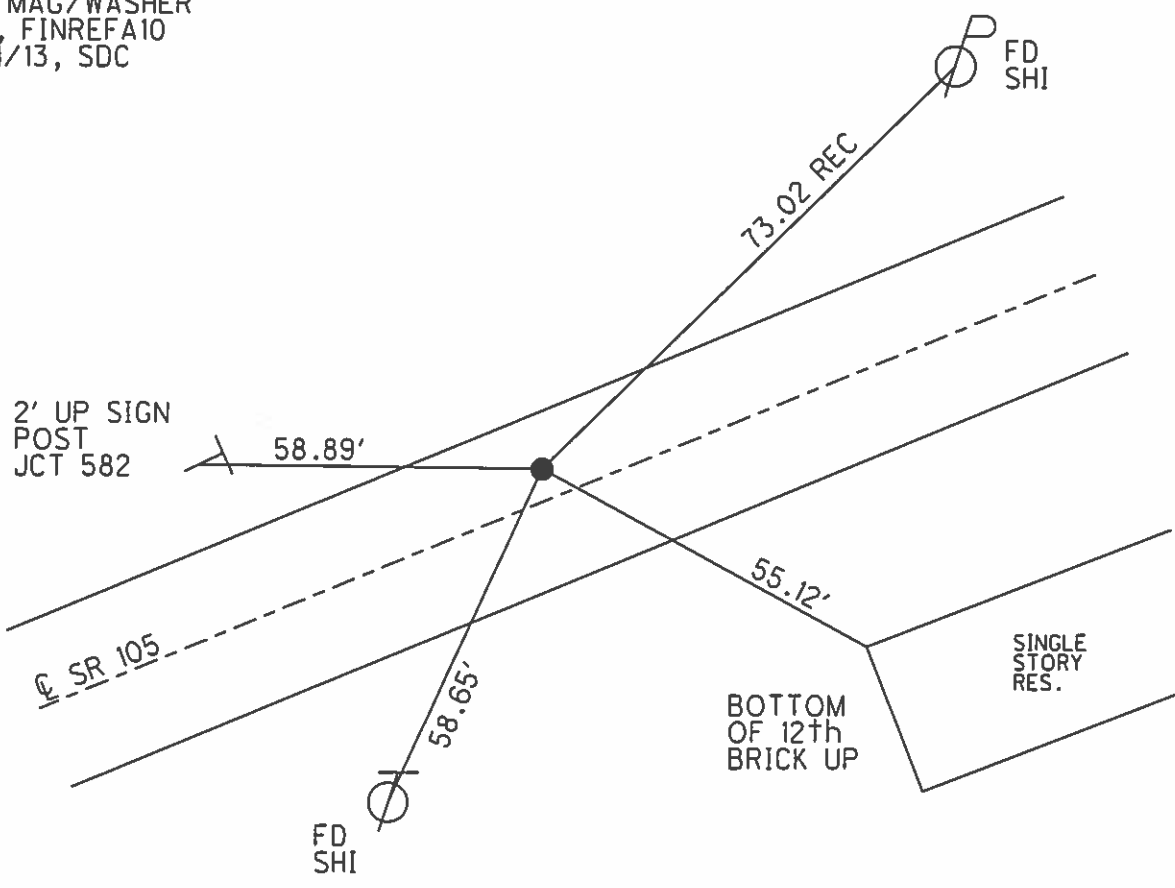
TYPE MONUMENT R.R. SPIKE
~~ON SURFACE~~ - BELOW 1"
 LEFT - CL PAV'T - ~~RIGHT~~ 4'
6.5' TO LT EDGE PAVEMENT
 S.L.M. 131+87.3



Grid: Northing: 651143.384 Easting: 1727225.164

FD R.R. SPIKE
 0.1' DOWN
 GPS, SANREF12

 SET MAG/WASHER
 GPS, FINREFA10
 5/31/13, SDC



O.D.O.T. DISTRICT 2 SURVEY OFFICE

PERSONNEL

REFERENCE NO. 10

SHEET OF

NOTES P. Cheney

H.C. R. Barbour

R.C. J. Ripple

R. Geyman

DATE 11-13-91

WEATHER Cloudy

TEMP. 45°

ROUTE 105

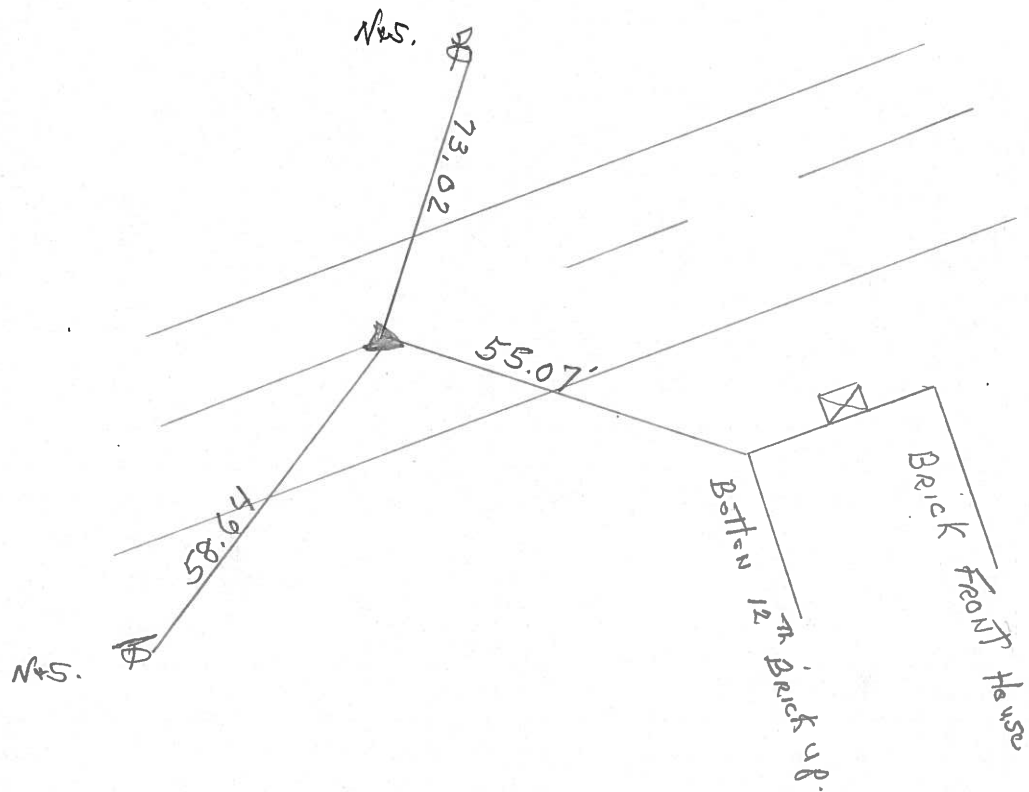
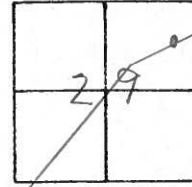
COUNTY SAN.

TOWNSHIP Woodville

SECTION 29

T 6 N R 13 E

TYPE MONUMENT P.K. & Washer
 ON SURFACE - BELOW 6" R.R. Spike
 LEFT - C PAVT. - RIGHT 4
6.5 TO LT. EDGE PAVEMENT
 S.L.M. 131 + 87.3



County Sandusky S.R. # 105

Date 7/1/82

Township Woodville

Weather sunny

Section 29

Temp. 69°

T4N, R13E

Personnel Cronin

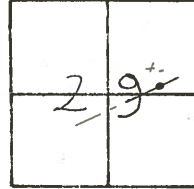
Ripple

Geyman

Mosser

Barbour

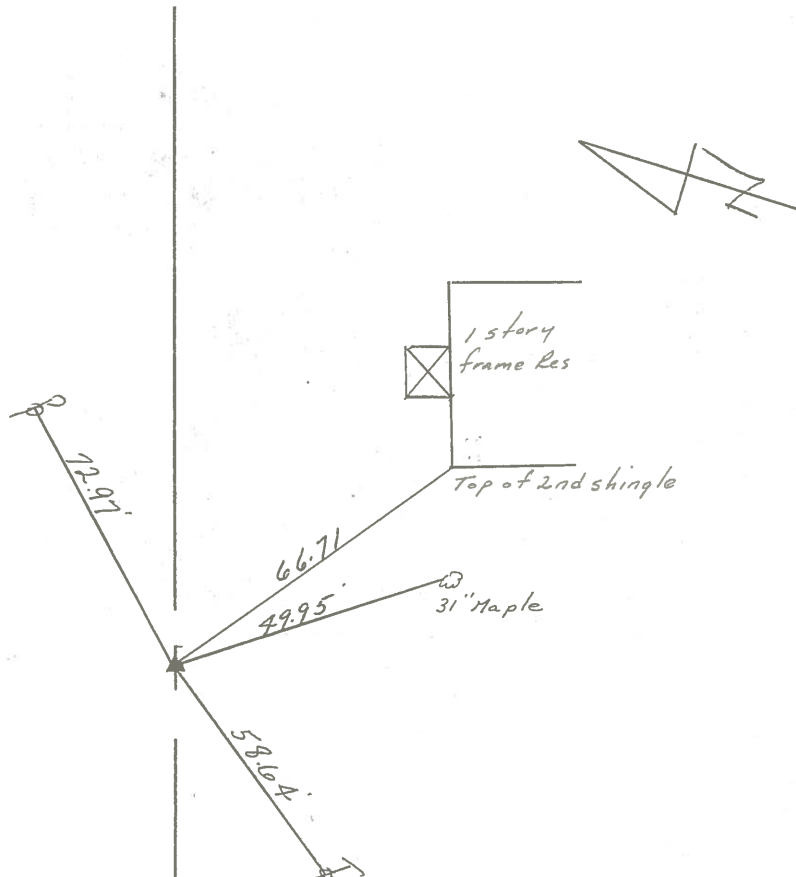
10



P.I.

131+87.30

P.K. & washer at top R.R.
spike 4.0 ft. & Pavement



R.R/W S.R. #105

PERSONNEL TITLE PERSONNEL TITLE

COUNTY Sandusky DATE 4-19-78

S. R. 105 WEATHER Fair

SEC. 29 TEMP. 60°

DESCRIPTION Woodville Twp, S.R. #23 to Woodville JOB NO.

LEFT CENTER LINE RIGHT

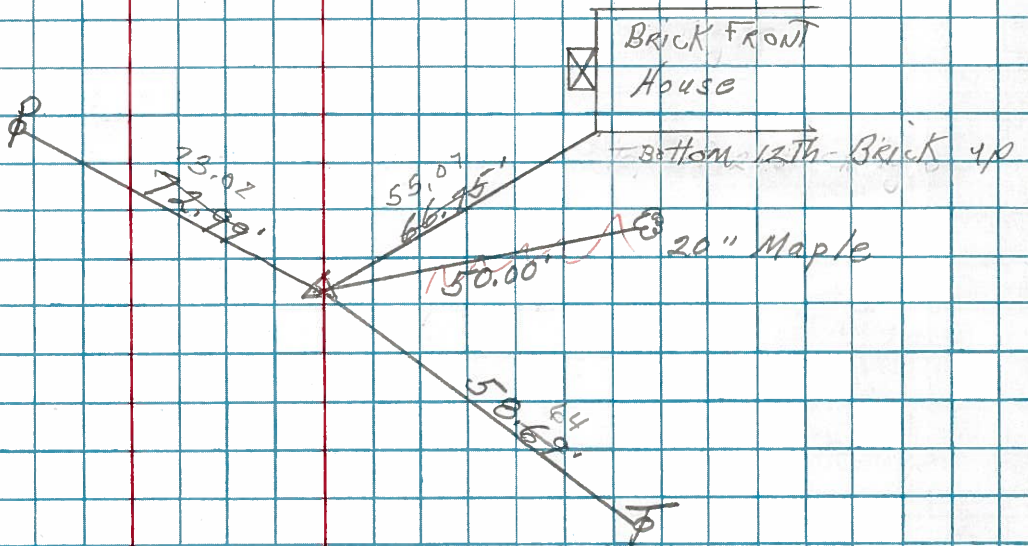
160+45.50
S. curb line
of U.S. #20

U.S. # 20A

65°
4/25/91

10

P.I.
131+87.30
Fd. R.R. Spk.
5" down
4' Lt. of Φ
set P.K. & washer atop
8/16/78

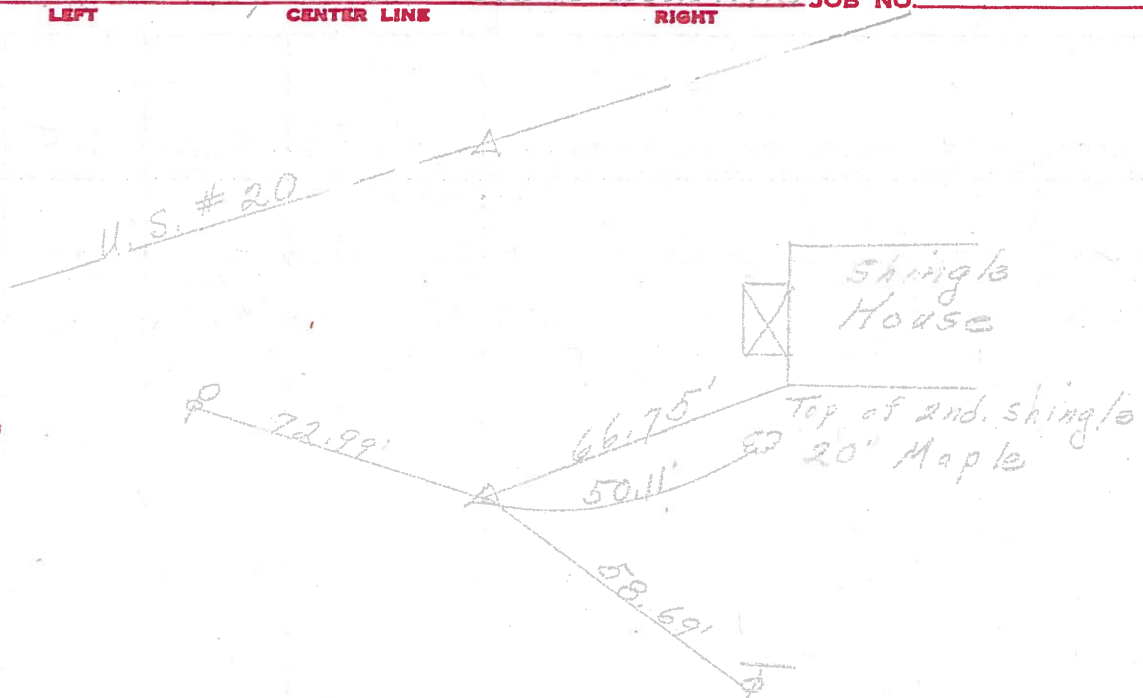


11-13-91 CLOUDY 45° SET PK/WASH
CH - M
B - MC
R - RL
G - F
4.5 CT. Φ
G.C. RT OF CT Φ P.

PERSONNEL	TITLE	PERSONNEL	TITLE	COUNTY	DATE
				<u>Sandusky</u>	<u>5-15-72</u>
				S. R. <u>105</u>	WEATHER <u>Fair</u>
				SEC. <u>29</u>	TEMP. <u>55°</u>
DESCRIPTION <u>Woodville Twp. S.R. #23 to Woodville</u>				JOB NO.	
	LEFT	CENTER LINE	RIGHT		

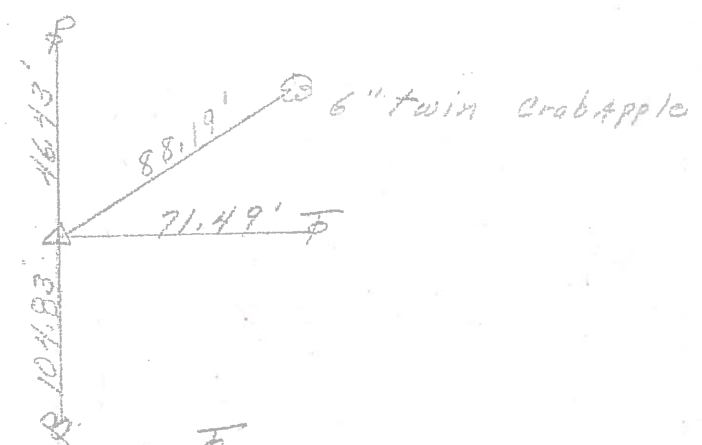
160+45.50

S. curb line
of U.S. #20



P.I. **(10)**
131+87.30
Fd. R.R. spk.
5" down
4' Lt. of \pm

(9)
P.I.
125+06.90
Measured & turned angle
set 5/8" rod 1' below ground
 $\Delta = 22^\circ 22'$ Rt.
 $E = 40.5'$



(8)
Spk. on top
This point must
be line for S.R. 582

