

O.D.O.T. DISTRICT 2 SURVEY OFFICE (USE ONLY)

PERSONNEL

REFERENCE NO. 10 A

SHEET 13 OF 13

NOTES MILLER

DATE 12/28/23

ROUTE SR 105

H.C. RHOADES

WEATHER RAIN

COUNTY SANDUSKY

R.C. MILLER

TEMP. 44°

TOWNSHIP WOODVILLE

SECTION 29

DWG BY RHOADES PID PAVING TRAIN

T 6 N R 13 E

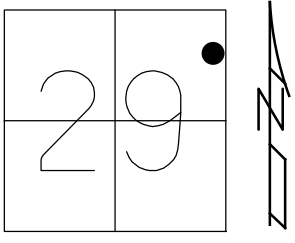
TYPE MONUMENT MAG/WASHER

ON SURFACE - ~~BELOW~~ ON

OFFSET 0.7' LT : ~~RT~~

- TO - EDGE PAVEMENT

STATION: 133+58.4



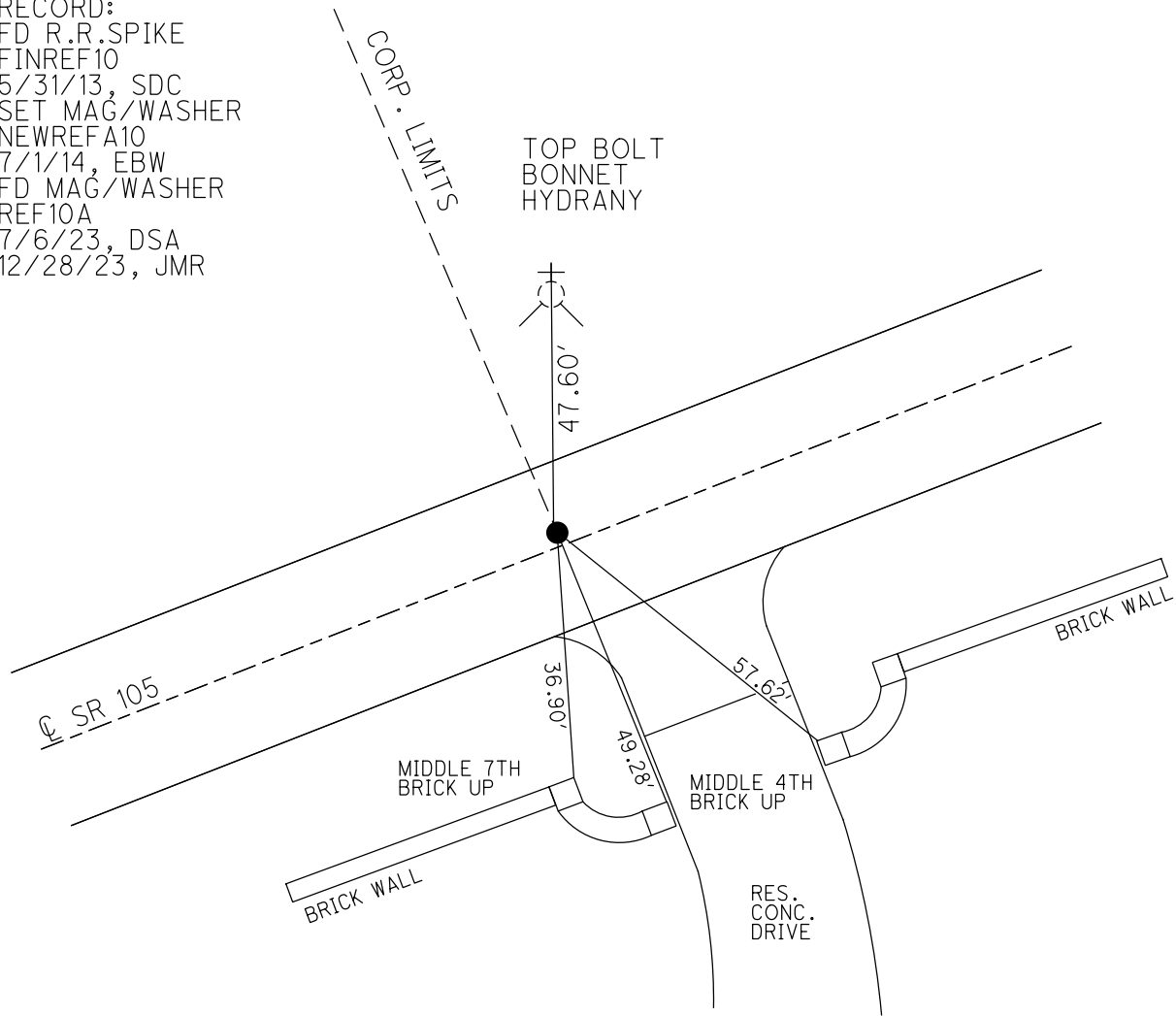
HORIZ.DATUM: NAD83 2011

GEOID: NAVD88 2018

GRID: NORTHING: 651229.178

EASTING: 1727450.141

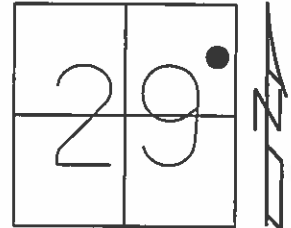
RECORD:  
 FD R.R.SPIKE  
 FINREF10  
 5/31/13, SDC  
 SET MAG/WASHER  
 NEWREFA10  
 7/1/14, EBW  
 FD MAG/WASHER  
 REF10A  
 7/6/23, DSA  
 12/28/23, JMR



O.D.O.T. DISTRICT 2 SURVEY OFFICE (USE ONLY)

PERSONNEL \_\_\_\_\_ REFERENCE NO. 10 A SHEET 1 OF 6  
 NOTES LEU DATE 5/2/14 ROUTE SR 105  
 H.C. WESTFALL WEATHER CLOUDY COUNTY SANDUSKY  
 R.C. LEU TEMP. 51° TOWNSHIP WOODVILLE  
 \_\_\_\_\_ SECTION 29  
 \_\_\_\_\_ T 6 N R 13 E

TYPE MONUMENT R.R.SPIKE  
 ON SURFACE - ~~BELOW~~ ON  
 LEFT - ☉ PAV'T - ~~RIGHT~~ 0.7'  
 - TO - EDGE PAVEMENT  
 S.L.M. 133+58.4  
 Grid: Northing: 651229.236 Easting: 1727450.365



FD R.R.SPIKE  
 GPS, FINREF10  
 4/30/13, SDC  
 NOT COVERED  
 5/31/13, SDC  
  
 SET MAG/WASHER  
 6/27/14  
 GPS, NEWREFA10  
 7/1/14, EBW

