

O.D.O.T. DISTRICT 2 SURVEY OFFICE (USE ONLY)

PERSONNEL

REFERENCE NO. 10 B

SHEET 1 OF 7

NOTES MILLER

DATE 12/28/23

ROUTE SR 105

H.C. RHOADES

WEATHER RAIN

COUNTY SANDUSKY

R.C. MILLER

TEMP. 44°

TOWNSHIP WOODVILLE

DWG BY RHOADES PID PAVING TRAIN

SECTION 28

T 6 N R 13 E

TYPE MONUMENT 6" CMON, W/ 1 1/2" IPIN

ON SURFACE - ~~BELOW~~ ON

OFFSET CL PAVEMENT 3" LT : ~~RT~~

7.5' TO RT EDGE PAVEMENT

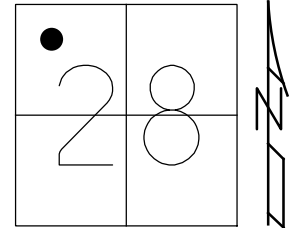
STATION: 138+63.4

HORIZ.DATUM: NAD83 2011

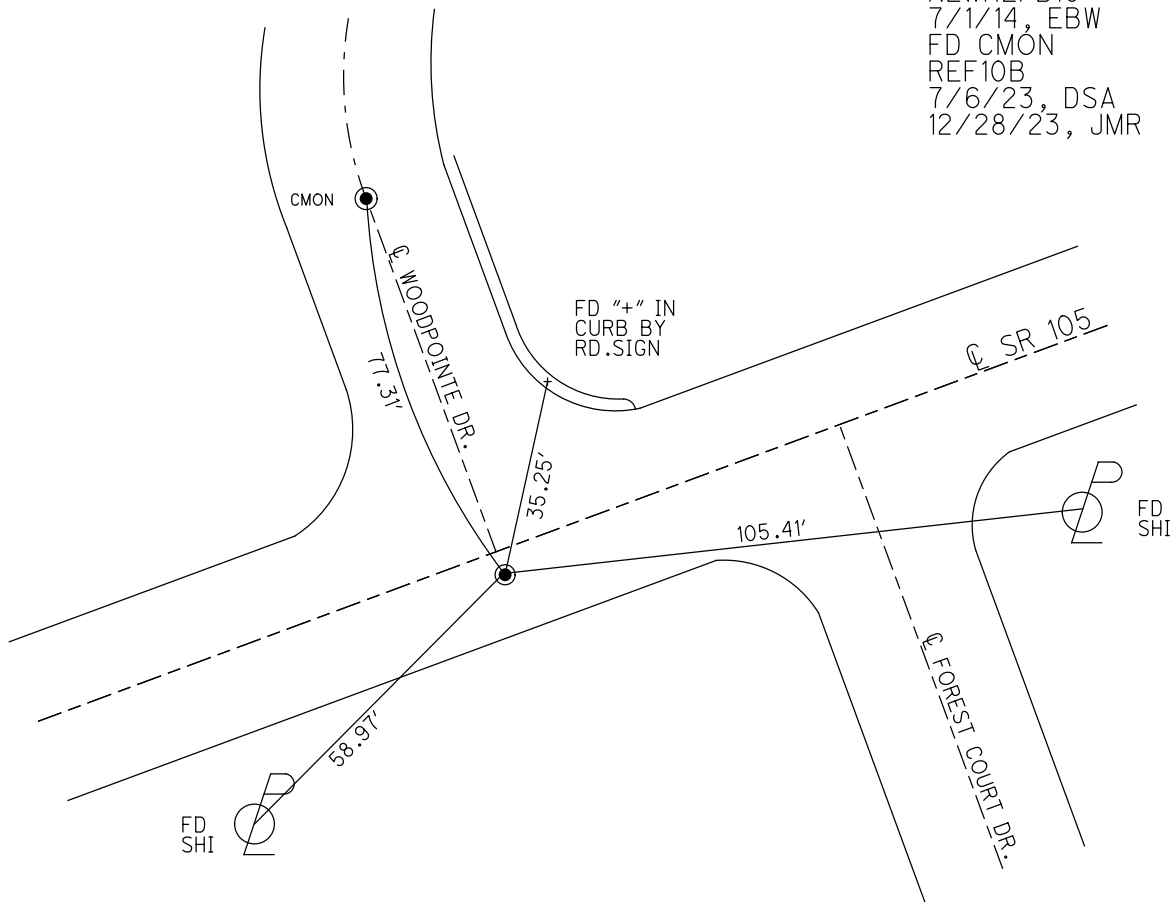
GEOID: NAVD88 2018

GRID: NORTHING: 651408.076

EASTING: 1727918.512



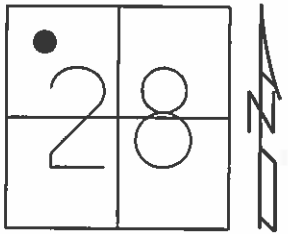
RECORD:  
 POINT ORIGIN  
 UNKNOWN  
 FD CMON  
 NEWREFB10  
 7/1/14, EBW  
 FD CMON  
 REF10B  
 7/6/23, DSA  
 12/28/23, JMR



O.D.O.T. DISTRICT 2 SURVEY OFFICE (USE ONLY)

PERSONNEL \_\_\_\_\_ REFERENCE NO. 10 B SHEET 2 OF 6  
 NOTES LEU DATE 5/2/14 ROUTE SR 105  
 H.C. WESTFALL WEATHER CLOUDY COUNTY SANDUSKY  
 R.C. LEU TEMP. 51° TOWNSHIP WOODVILLE  
 SECTION 28  
 T 6 N R 13 E

TYPE MONUMENT 6" CMON, W/ 1 1/2" IPIN  
 ON SURFACE - ~~BELOW~~ ON \_\_\_\_\_  
~~LEFT~~ - CL PAV'T - RIGHT 3'  
7.5' TO RT. EDGE PAVEMENT  
 S.L.M. 138+63.4



Grid: Northing: 651408.076 Easting: 1727918.512

RECORD:  
 POINT ORIGIN  
 UNKNOWN  
 FD CMON  
 6/27/14  
 GPS, NEWREFB10  
 7/1/14, EBW

