

O.D.O.T. DISTRICT 2 SURVEY OFFICE (USE ONLY)

PERSONNEL _____

REFERENCE NO. 11

SHEET 3 OF 8

NOTES CHENEY

DATE 12/09/91

ROUTE SR 105

H.C. RIPPLE

WEATHER CLOUDY

COUNTY SANDUSKY

R.C. BARBOUR
GEYMAN

TEMP. 45°

TOWNSHIP WOODVILLE

DWG BY NIESE PID _____

SECTION 28

T 6 N R 13 E

TYPE MONUMENT NAIL/SHINER

ON SURFACE - ~~BELOW~~ ON

OFFSET 8.8' TO LT EDGE PAVEMENT

2.1' LT : ~~RT~~

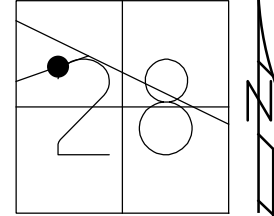
STATION: 158+00.00

HORIZ.DATUM: _____

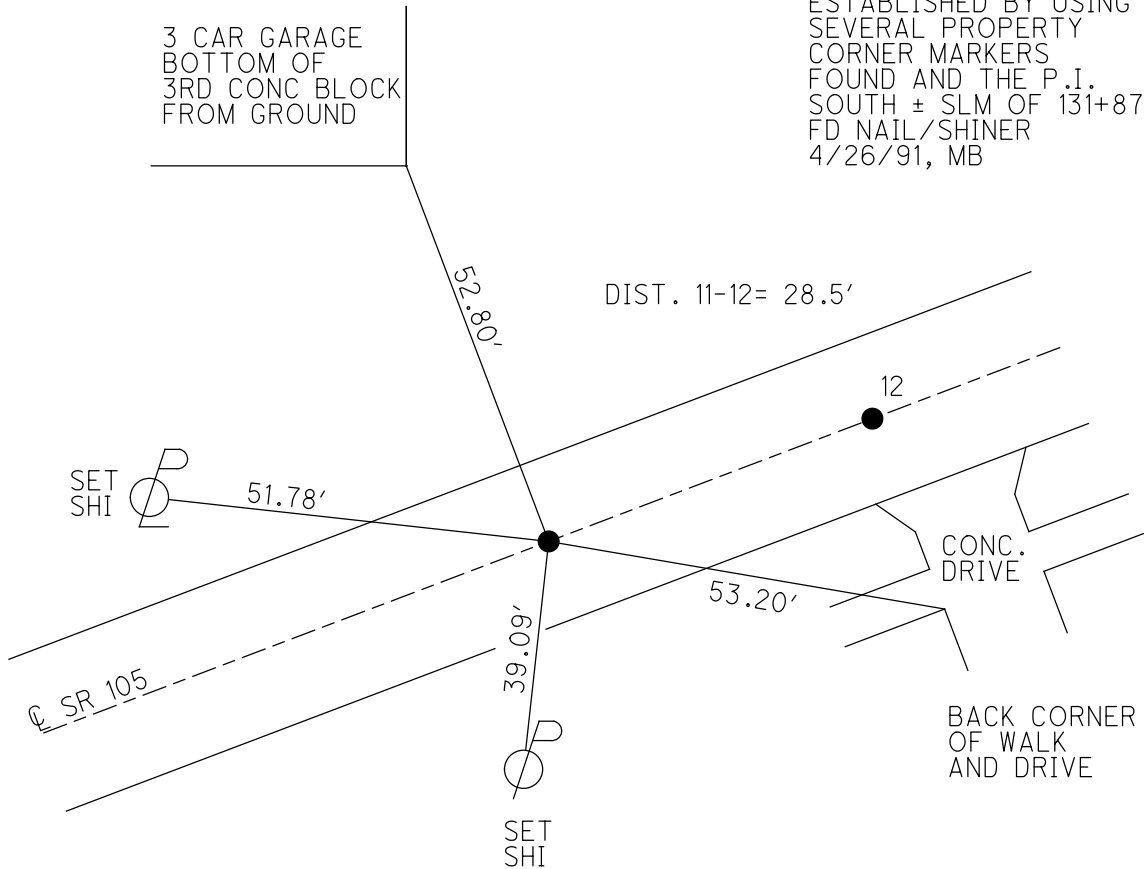
GEOID: _____

GRID: NORTHING: _____

EASTING: _____



RECORD:
 C SURVEY ON SR 105
 ESTABLISHED BY USING
 SEVERAL PROPERTY
 CORNER MARKERS
 FOUND AND THE P.I.
 SOUTH ± SLM OF 131+87.3
 FD NAIL/SHINER
 4/26/91, MB



O.D.O.T. DISTRICT 2 SURVEY OFFICE

PERSONNEL

REFERENCE NO. _____

SHEET 1 OF 9

NOTES CHENEY

H.C. RIPPLE

R.C. BARBOUR

GEYMAN

DATE 12-09-91

WEATHER cloudy

TEMP. 45°

ROUTE SR# 105

COUNTY SANDUSKY

TOWNSHIP Woodville

SECTION 28

T6 N R 13 E

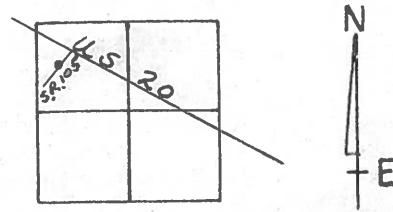
TYPE MONUMENT NAIL & SHINER

ON SURFACE - BELOW YES

LEFT- & PAW'T. - RIGHT 2.1'

8.8 TO LT. EDGE PAVEMENT

S.L.M. 158+00.00



NOTE: Survey on SR#105 Established
By using Several Property Corner
Markers Found at the P.I. South
± SLM of 131+87.3

