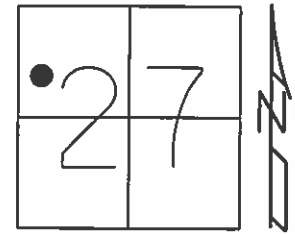


O.D.O.T. DISTRICT 2 SURVEY OFFICE (USE ONLY)

PERSONNEL _____ REFERENCE NO. 13 SHEET 3 OF 6
 NOTES LEU DATE 5/2/14 ROUTE SR 105
 H.C. WESTFALL WEATHER CLOUDY COUNTY SANDUSKY
 R.C. RHOADES TEMP. 51° TOWNSHIP WOODVILLE
 _____ SECTION 27
 _____ T 6 N R 13 E

TYPE MONUMENT P.K./WASHER
~~ON SURFACE~~ - BELOW 1/2"
 LEFT - ☉ PAV'T - ~~RIGHT~~ 9.0'
4.6' TO LT EDGE CURB
 S.L.M. 212+18



Grid: Northing: 651631.278 Easting: 1734505.500

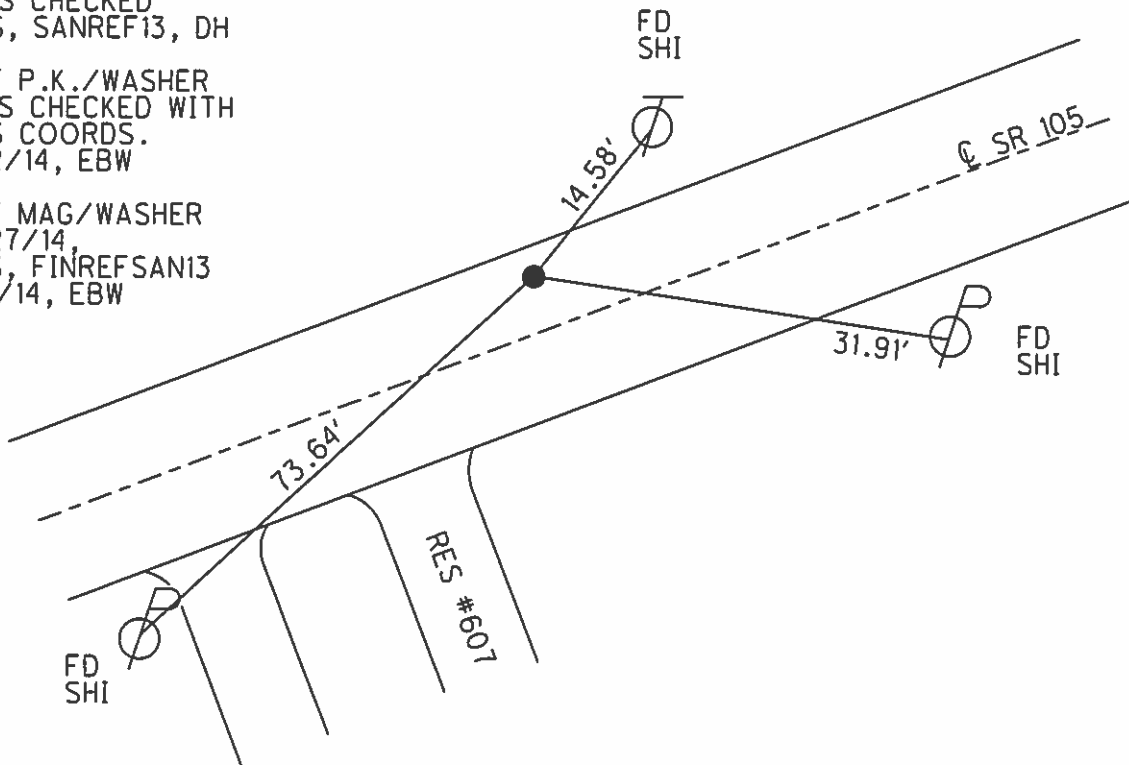
RECORD: 7/24/85
 P.K./WASHER ATOP
 SMALL SPIKE 1/2" BELOW
 P.I. STA. 211+73±

SET P.K./WASHER
 8/18/94, JLR

DNF P.K./WASHER
 TIES CHECKED
 GPS, SANREF13, DH

DNF P.K./WASHER
 TIES CHECKED WITH
 GPS COORDS.
 5/2/14, EBW

SET MAG/WASHER
 6/27/14,
 GPS, FINREFSAN13
 7/1/14, EBW



O.D.O.T. DISTRICT 2 SURVEY OFFICE

PERSONNEL

REFERENCE NO. 13

SHEET 1 OF 13

NOTES RIPPLE

H.C. RIPPLE

R.C. GEYMAN

DATE 8-18-1994

WEATHER SUNNY

TEMP. 75°

ROUTE #105

COUNTY SANDUSKY

TOWNSHIP Woodville-City

SECTION 28

T. 6 N R. 13 E

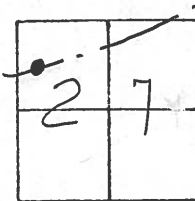
TYPE MONUMENT P.K. / washer

~~ON SURFACE~~ - BELOW 1/2"

LEFT-~~C~~ PAV'T. - ~~RIGHT~~ 2 PAV'T. 9.0'

4.6 TO LT. EDGE PAVEMENT CURB

S.L.M. 212+18



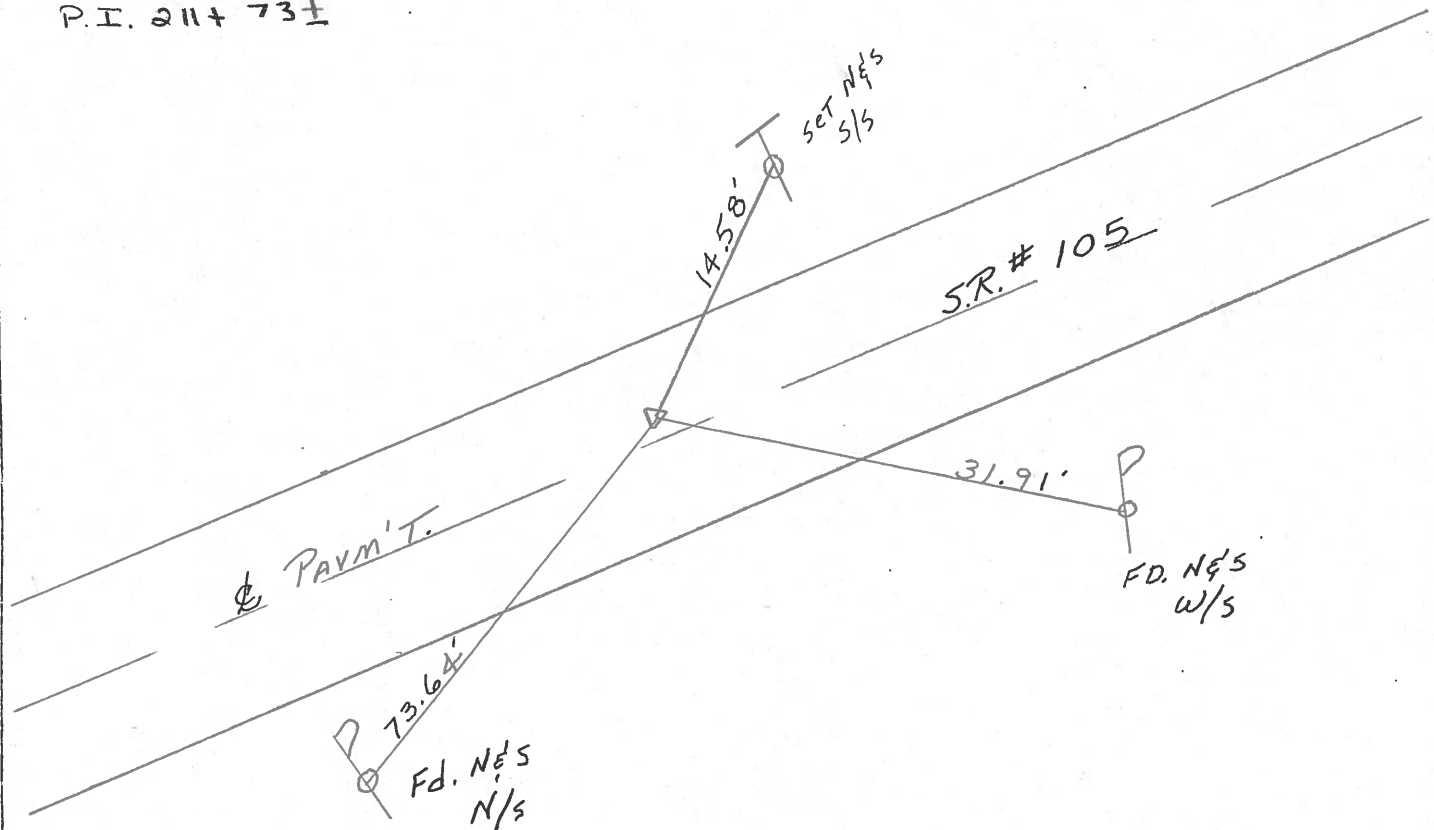
Record: 7-24-85

PK & washer ATOP small spike

1/2" below

P.I. 211+73±

Set P.K. & washer
8-18-1994
J.L.R.



Resurfaced 1994

O.D.O.T. DISTRICT 2 SURVEY OFFICE

PERSONNEL

NOTES CROWIN
H.C. RIPPLE
R.C. BARBOUR
GEYMAN

REFERENCE NO. _____

SHEET 1 OF _____

DATE 7/24/85
WEATHER Sunny
TEMP. 65°

ROUTE #105
COUNTY SANDUSKY
TOWNSHIP WOODVILLE - City
SECTION 28
T. 6 N R. 13 E

TYPE MONUMENT P.K. SWASHER atop small spike
ON SURFACE - BELOW 1/2" below
LEFT - Q PAV'T. - RIGHT 9.6 ft ± Paint
TO _____ EDGE PAVEMENT
S.L.M. 4.01 ±

13



P.F.
211 + 73 ±

