

O.D.O.T. DISTRICT 2 SURVEY OFFICE

PERSONNEL

REFERENCE NO. 14

SHEET 2 OF 13

NOTES RIPPLE

H.C. RIPPLE

R.C. GEYMAN

DATE 8-18-1994

WEATHER SUNNY

TEMP. 75°

ROUTE #105

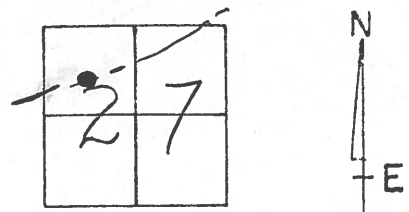
COUNTY SANDUSKY

TOWNSHIP Woodville C.T.

SECTION 27

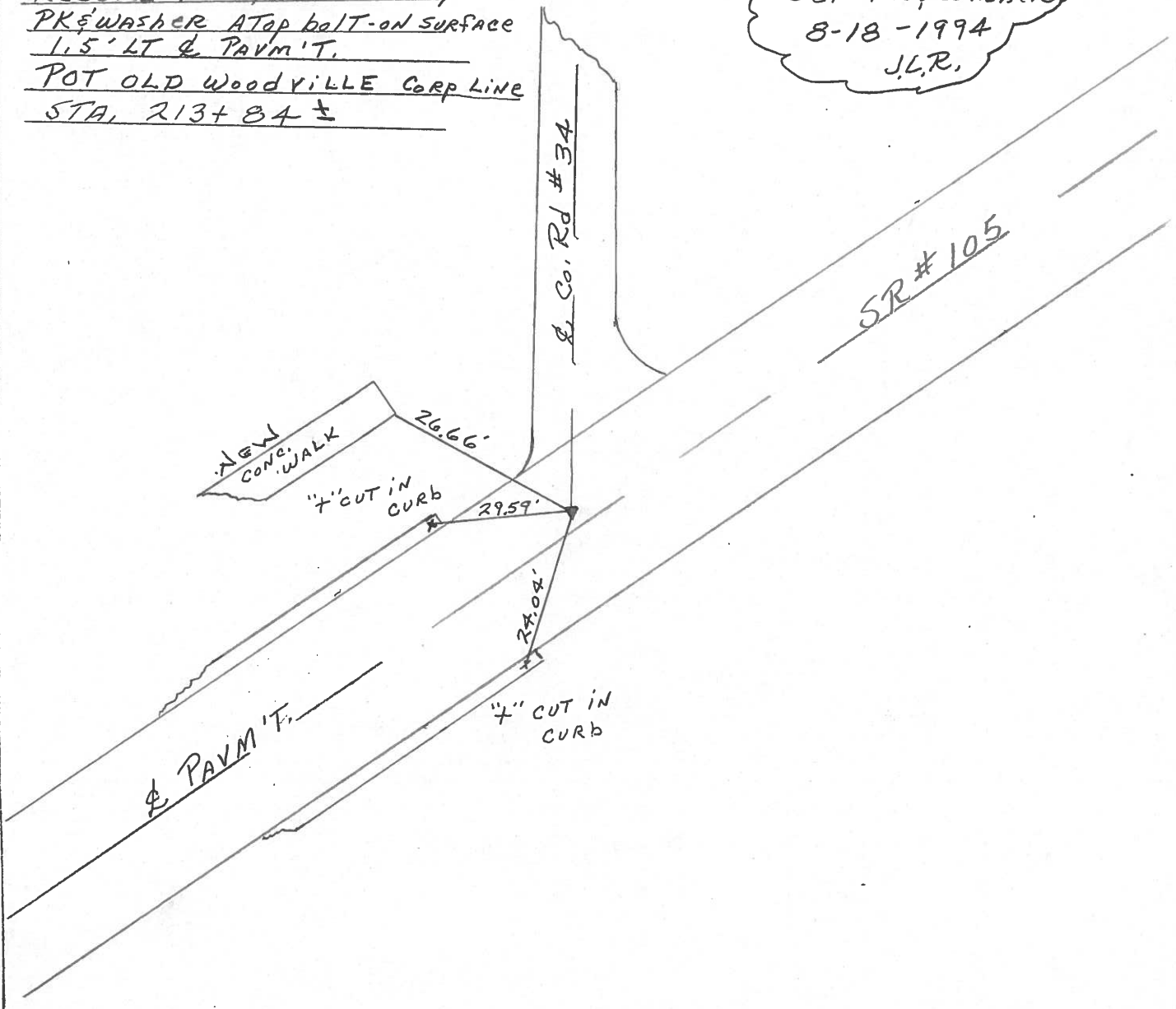
T.G.N.R. 13 E

TYPE MONUMENT PK&WASHER
 ON SURFACE - ~~BELOW~~ ON
 LEFT- & PAV'T. - RIGHT 1.5' LT. & PAVM'T.
8.3 TO LT. EDGE PAVEMENT
 S.L.M. 214+60



Record: PK&WASHER ATOP
PK&WASHER ATOP bolt-on surface
1.5' LT & PAVM'T.
POT OLD WOODVILLE CORP LINE
STA. 213+84 ±

Set PK&WASHER
 8-18-1994
 J.L.R.



O.D.O.T. DISTRICT 2 SURVEY OFFICE

PERSONNEL

NOTES CROWIN
 H.C. RIPPLE
 R.C. BARBOUR
GEYMAN

REFERENCE NO. _____

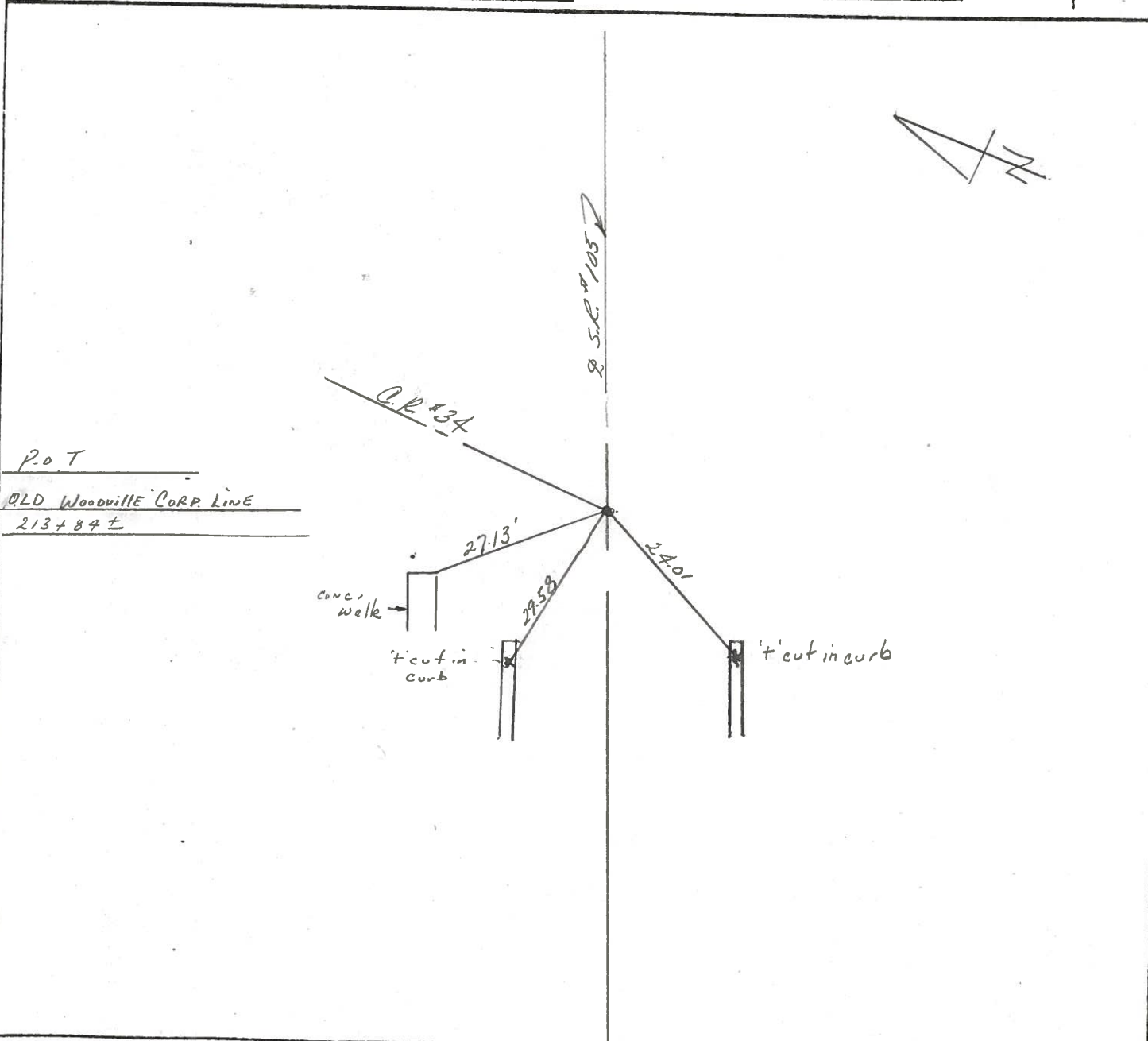
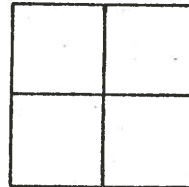
DATE 7/24/85
 WEATHER SUNNY
 TEMP. 65°

SHEET 2 OF _____

ROUTE 105
 COUNTY SANDUSKY
 TOWNSHIP Woodville City
 SECTION _____
T 6 N R 13 E

TYPE MONUMENT P.R. WASHER ATOP P.R. WASHER
 ON SURFACE - BELOW Atop Bolt - ON SURFACE
 LEFT - PAV'T. - RIGHT 1.5' L.E. Pavmt
 _____ TO _____ EDGE PAVEMENT
 S.L.M. _____

14



P.O.T
OLD Woodville Corp. Line
213 + 84 ±

PERSONNEL	TITLE	PERSONNEL	TITLE	COUNTY	DATE	S. R.	WEATHER	TEMP.
Schneider		Potts		Sandusky	4-17-68	105	cloudy	65°
Mosser								
Barbour								
Redding								

DESCRIPTION: Ties for Control Points JOB NO. _____

