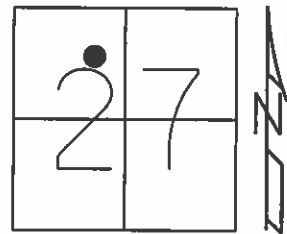


O.D.O.T. DISTRICT 2 SURVEY OFFICE (USE ONLY)

PERSONNEL _____ REFERENCE NO. 15 SHEET 4 OF 6
 NOTES LEU DATE 5/2/14 ROUTE SR 105
 H.C. WESTFALL WEATHER CLOUDY COUNTY SANDUSKY
 R.C. RHOADES TEMP. 51° TOWNSHIP WOODVILLE
 _____ SECTION 27
 _____ T 6 N R 13 E

TYPE MONUMENT P.K.
 ON SURFACE - ~~BELOW~~ ON _____
 LEFT - ☉ PAV'T - RIGHT ON _____
10' TO LT EDGE PAVEMENT
 S.L.M. 222+32



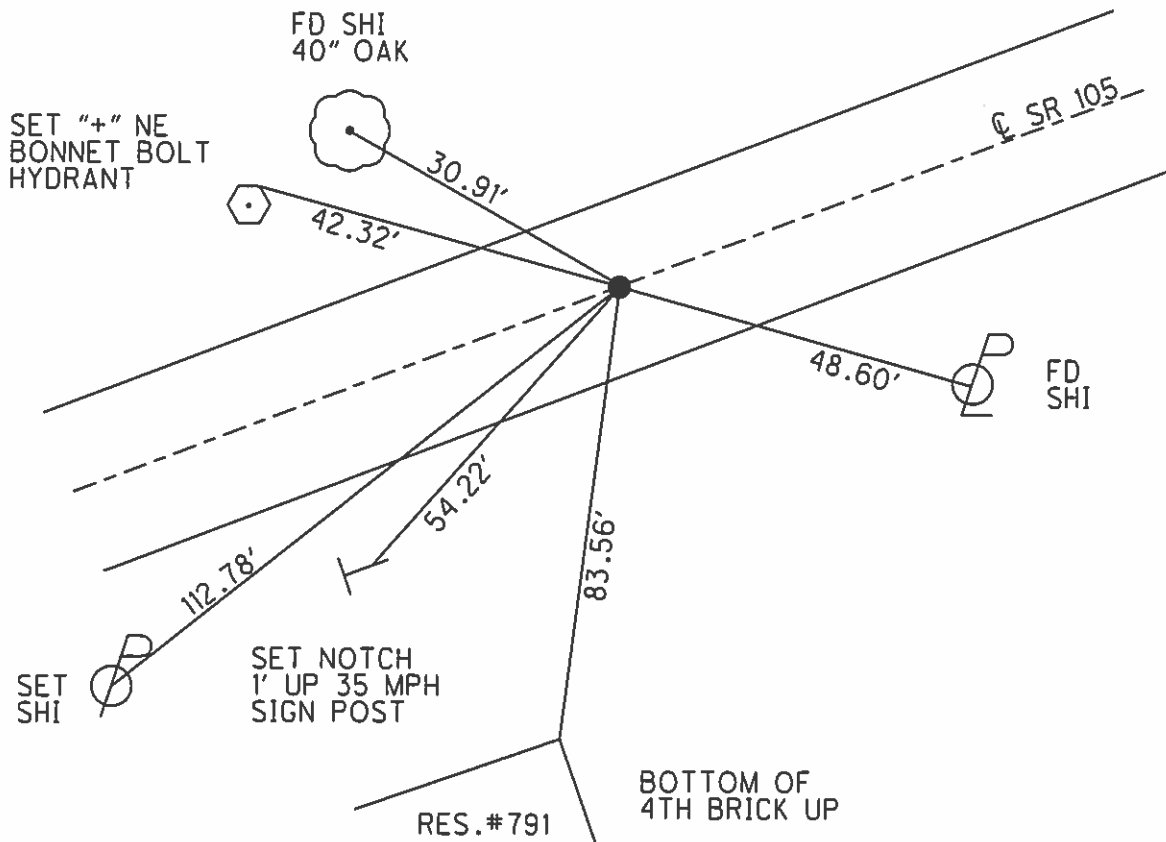
Grid: Northing: 651898.858 Easting: 1735483.047

RECORD: 7/24/85
 P.K./WASHER ON SURFACE
 ATOP P.K./WASHER ATOP P.K.
 P.O.T. STA. 221+76±

FD P.K.
 GPS, SANREF15
 DH

SET P.K./WASHER
 8/18/94, JLR

SET MAG/WASHER
 6/27/14,
 GPS, FINREFSAN15
 7/1/14, EBW



O.D.O.T. DISTRICT 2 SURVEY OFFICE

PERSONNEL

REFERENCE NO. 15

SHEET 3 OF 13

NOTES RIPPLE

H.C. RIPPLE

R.C. GEYMAN

DATE 8-18-1994

WEATHER SUNNY

TEMP. 75°

ROUTE #105

COUNTY SANDUSKY

TOWNSHIP Woodville City

SECTION 27

T. 6 N R. 13 E

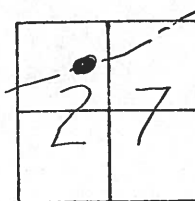
TYPE MONUMENT P.K. & WASHER

ON SURFACE - ~~BELOW~~ ON

~~LEFT - & PAV'T. - RIGHT~~ ON &

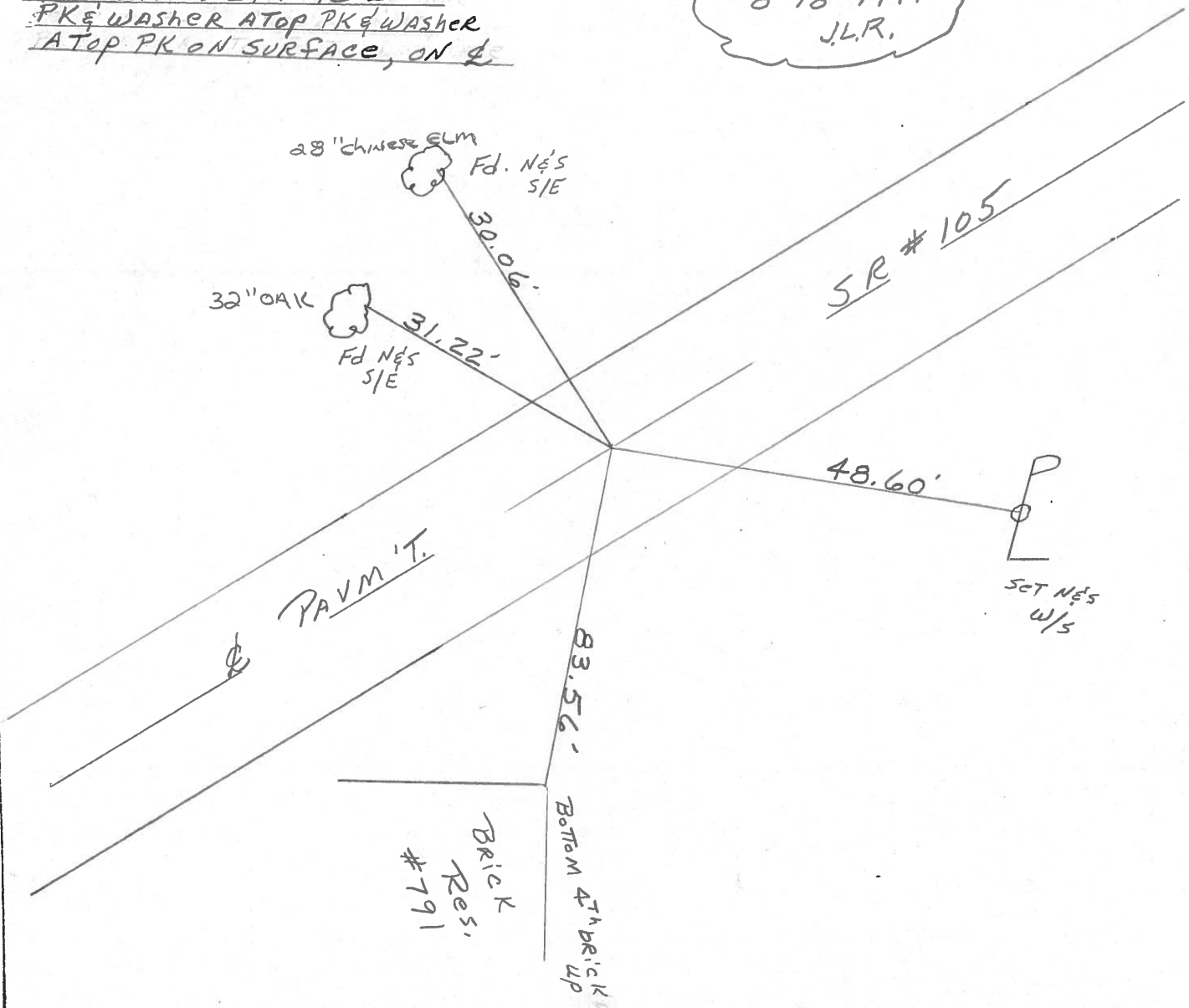
10.0' TO LT. EDGE PAVEMENT

S.L.M. 222+32



Record: 7-24-1985
POB. STA 221+176 ±
PK & WASHER ATOP PK & WASHER
ATOP PK ON SURFACE, ON &

SET PK & W
 8-18-1994
 J.L.R.



O.D.O.T. DISTRICT 2 SURVEY OFFICE

PERSONNEL _____

REFERENCE NO. _____

SHEET 3 OF _____

NOTES CROWIN

H.C. RIPPLE

R.C. BARBOUR

GEYMAN

DATE 7/24/95

WEATHER SUNNY

TEMP. 68°

ROUTE 105

COUNTY SANDUSKY

TOWNSHIP WOODVILLE - C.T.

SECTION _____

T 6 N R 13 E

TYPE MONUMENT P.K. & WASHER ATOP P.K. & WASHER

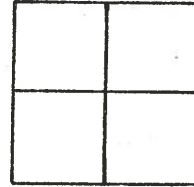
ON SURFACE - BELOW ATOP P.K. - ON SURFACE

LEFT - Q PAV'T. - RIGHT ON E

TO _____ EDGE PAVEMENT

S.L.M. _____

15



P.O.T.

221+76+

24" CHINESE ELM

30.10'

31.47'

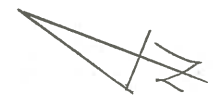
28" OAK

44.02'

83.53'

4th brick up

Brick Res.



| | | | | | |
|------------------|--------------------------------|--------------|-------|--------------------------|----------------|
| PERSONNEL | TITLE | PERSONNEL | TITLE | COUNTY | DATE |
| <u>Schneider</u> | | <u>Potts</u> | | <u>Sandusky</u> | <u>4-17-68</u> |
| <u>Mosser</u> | | | | S. R. | WEATHER |
| <u>Barbour</u> | | | | <u>105</u> | <u>cloudy</u> |
| <u>Redding</u> | | | | SEC. | TEMP. |
| | | | | <u>N.E. of Woodville</u> | <u>65°</u> |
| DESCRIPTION | <u>Ties for Control Points</u> | | | JOB NO. | |

