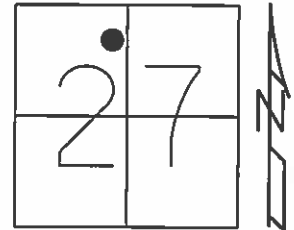


O.D.O.T. DISTRICT 2 SURVEY OFFICE (USE ONLY)

PERSONNEL _____ REFERENCE NO. 16 SHEET 5 OF 6
 NOTES RHOADES DATE 7/1/14 ROUTE SR 105
 H.C. WESTFALL WEATHER CLOUDY COUNTY SANDUSKY
 R.C. THOMAS TEMP. 78° TOWNSHIP WOODVILLE
 _____ SECTION 27
 _____ T 6 N R 13 E

TYPE MONUMENT P.K./WASHER
 ON SURFACE - ~~BELOW~~ ON
~~LEFT~~ - Q PAV'T - RIGHT 7.2'
2.4' TO RT EDGE PAVEMENT
 S.L.M. 227+84



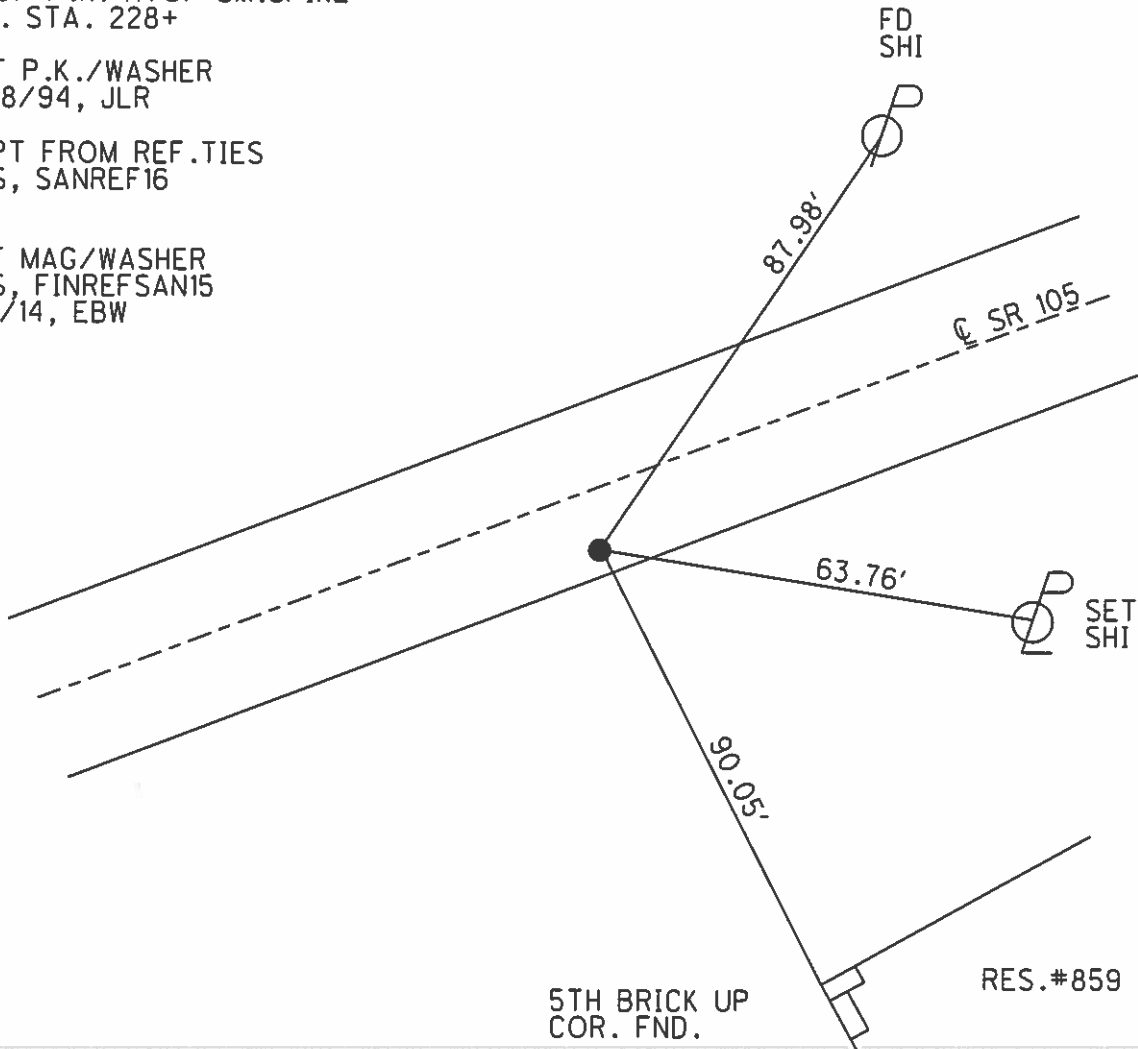
Grid: Northing: 652044.524 Easting: 1736014.133

RECORD: 7/24/85
 P.K./WASHER ON SURFACE
 ATOP P.K. ATOP SM.SPIKE
 P.I. STA. 228+

SET P.K./WASHER
 8/18/94, JLR

CNPT FROM REF.TIES
 GPS, SANREF16
 DH

SET MAG/WASHER
 GPS, FINREFSAN15
 7/1/14, EBW



RES.#859

O.D.O.T. DISTRICT 2 SURVEY OFFICE

PERSONNEL

REFERENCE NO. 16

SHEET 4 OF 13

NOTES RIPPLE

H.C. RIPPLE

R.C. GEYMAN

DATE 8-18-1994

WEATHER SUNNY

TEMP. 75°

ROUTE #105

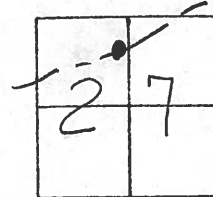
COUNTY SANDUSKY

TOWNSHIP Woodville-city

SECTION 27

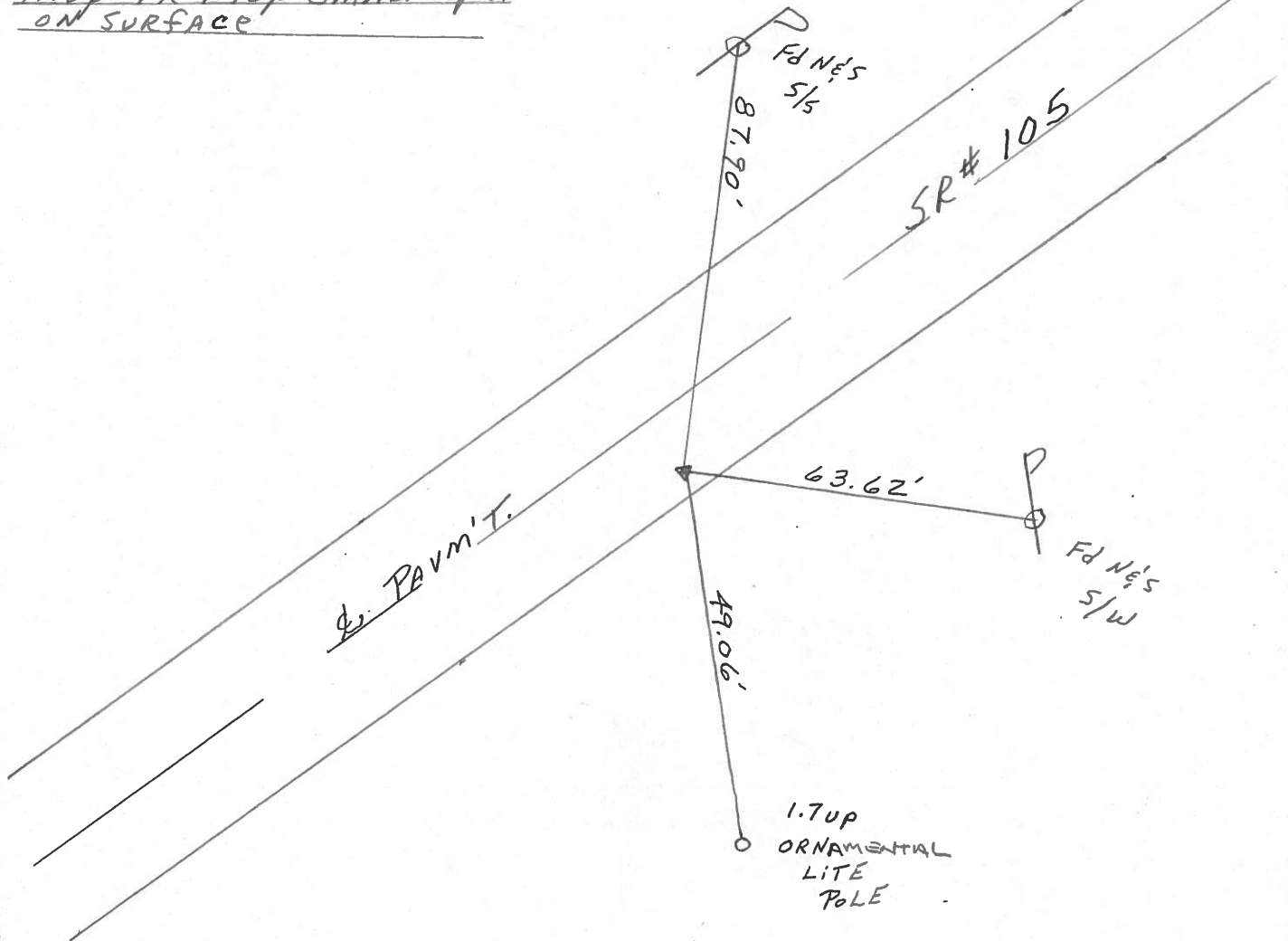
T. 6 N R. 13 E

TYPE MONUMENT PK & WASHER
 ON SURFACE - ~~BELOW~~ ON
 LEFT - CL. PAV'T. - RIGHT 7.2' RT & PAVM'T.
2.4' TO RT. EDGE PAVEMENT
 S.L.M. 227+84



Record: 7-24-1985
PI 228+ PK & WASHER
ATOP PK ATOP SMALL SPK.
ON SURFACE

SET PK & WASHER
 8-18-1994
 JLR



O.D.O.T. DISTRICT 2 SURVEY OFFICE

PERSONNEL

NOTES CRONIN
H.C. RIPPLE
R.C. BARBOUR
GEYMAN

REFERENCE NO. _____

DATE 7/24/85
WEATHER SUNNY
TEMP. 68°

SHEET 4 OF _____

ROUTE 105
COUNTY SANDUSKY
TOWNSHIP WOODVILLE - C.T.
SECTION _____
T 6 N R 13 E

TYPE MONUMENT P.K. WASHER AT OP P.K. AT OP
ON SURFACE - BELOW SMALL SPIKE - ON SURFACE
LEFT - ¢ PAV'T. - RIGHT 7 FT. & PAVMT.
TO _____ EDGE PAVEMENT
S.L.M. 4.32 E

16

