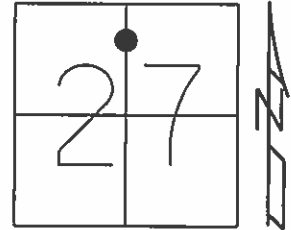


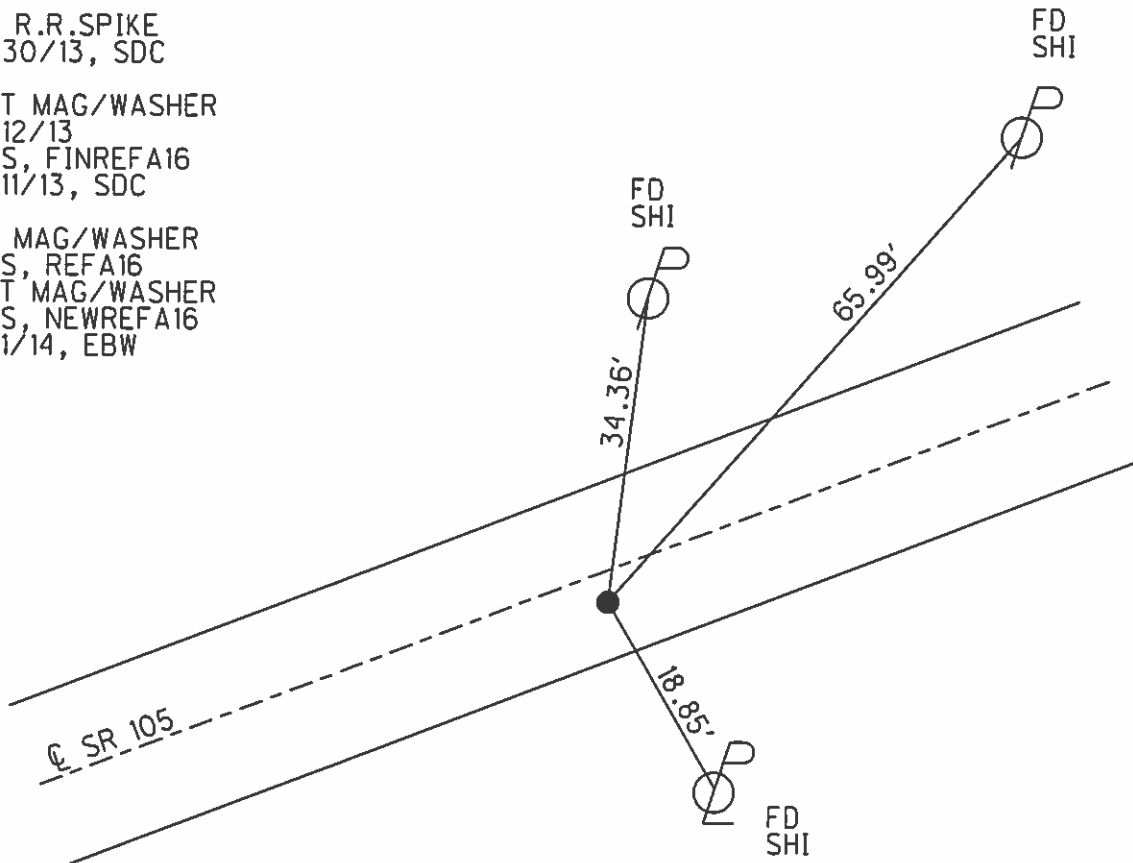
O.D.O.T. DISTRICT 2 SURVEY OFFICE (USE ONLY)

PERSONNEL _____ REFERENCE NO. 16 A SHEET 6 OF 6
 NOTES RHOADES DATE 7/1/14 ROUTE SR 105
 H.C. WESTFALL WEATHER CLOUDY COUNTY SANDUSKY
 R.C. THOMAS TEMP. 78° TOWNSHIP WOODVILLE
 _____ SECTION 27
 _____ T 6 N R 13 E

TYPE MONUMENT R.R.SPIKE
 ON SURFACE - ~~BELOW~~ ON
~~LEFT~~ - Q PAV'T - RIGHT 2.5'
- TO - EDGE PAVEMENT
 S.L.M. 228+41
 Grid: Northing: 652069.989 Easting: 1736080.896



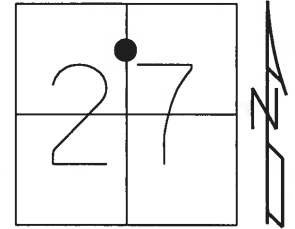
FD R.R.SPIKE
 4/30/13, SDC
 SET MAG/WASHER
 6/12/13
 GPS, FINREFA16
 7/11/13, SDC
 FD MAG/WASHER
 GPS, REFA16
 SET MAG/WASHER
 GPS, NEWREFA16
 7/1/14, EBW



O.D.O.T. DISTRICT 2 SURVEY OFFICE (USE ONLY)

PERSONNEL	REFERENCE NO. <u>16 A</u>	SHEET <u>1</u> OF <u>10</u>
NOTES <u>RHOADES</u>	DATE <u>4/30/13</u>	ROUTE <u>SR 105</u>
H.C. <u>CODER</u>	WEATHER <u>CLEAR</u>	COUNTY <u>SANDUSKY</u>
R.C. <u>RHOADES</u>	TEMP. <u>51°</u>	TOWNSHIP <u>WOODVILLE</u>
		SECTION <u>27</u>
		T <u>6</u> N R <u>13</u> E

TYPE MONUMENT R.R.SPIKE
 ON SURFACE - ~~BELOW~~ ON
~~LEFT~~ - Q PAV'T - RIGHT 2.5'
- TO - EDGE PAVEMENT
 S.L.M. 228+41



Grid: Northing: 652069.988 Easting: 1736080.914

FD R.R.SPIKE
 SET MAG/WASHER
 6/12/13, SDC
 GPS, FINREFA16
 7/11/13, SDC

