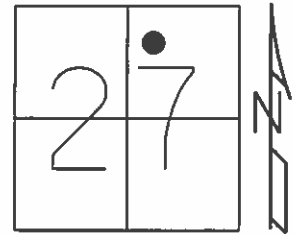


O.D.O.T. DISTRICT 2 SURVEY OFFICE (USE ONLY)

PERSONNEL	REFERENCE NO. <u>17</u>	SHEET <u>2</u> OF <u>10</u>
NOTES <u>RHOADES</u>	DATE <u>4/30/13</u>	ROUTE <u>SR 105</u>
H.C. <u>CODER</u>	WEATHER <u>CLEAR</u>	COUNTY <u>SANDUSKY</u>
R.C. <u>RHOADES</u>	TEMP. <u>51°</u>	TOWNSHIP <u>WOODVILLE</u>
		SECTION <u>27</u>
		T <u>6</u> N R <u>13</u> E

TYPE MONUMENT P.K./WASHER
 ON SURFACE - ~~BELOW~~ ON
~~LEFT~~ - Q PAV'T - RIGHT 6.0'
3.5' TO RT EDGE PAVEMENT
 S.L.M. 236+81
 Grid: Northing: 652365.674 Easting: 1736850.625

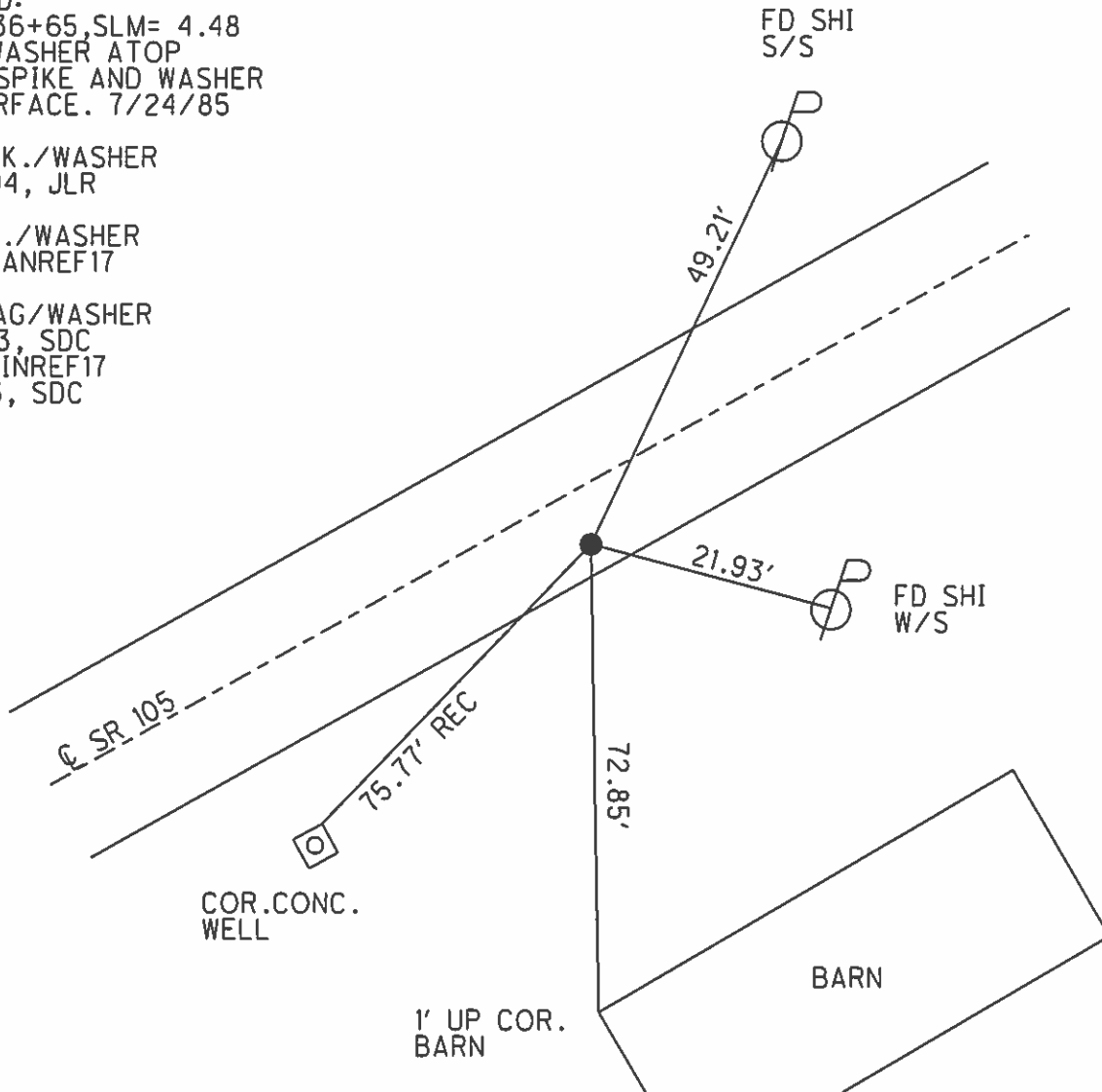


RECORD:
 P.I. 236+65, SLM= 4.48
 P.K./WASHER ATOP
 BOAT SPIKE AND WASHER
 ON SURFACE. 7/24/85

SET P.K./WASHER
 8/18/94, JLR

FD P.K./WASHER
 GPS, SANREF17

SET MAG/WASHER
 6/12/13, SDC
 GPS, FINREF17
 7/11/13, SDC



O.D.O.T. DISTRICT 2 SURVEY OFFICE

PERSONNEL

REFERENCE NO. 17

SHEET 5 OF 13

NOTES RIPPLE

H.C. RIPPLE

R.C. GEYMAN

DATE 8-18-1994

WEATHER SUNNY

TEMP. 75°

ROUTE #105

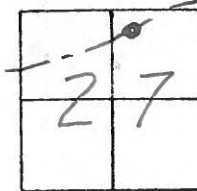
COUNTY SANDUSKY

TOWNSHIP Woodville

SECTION 27

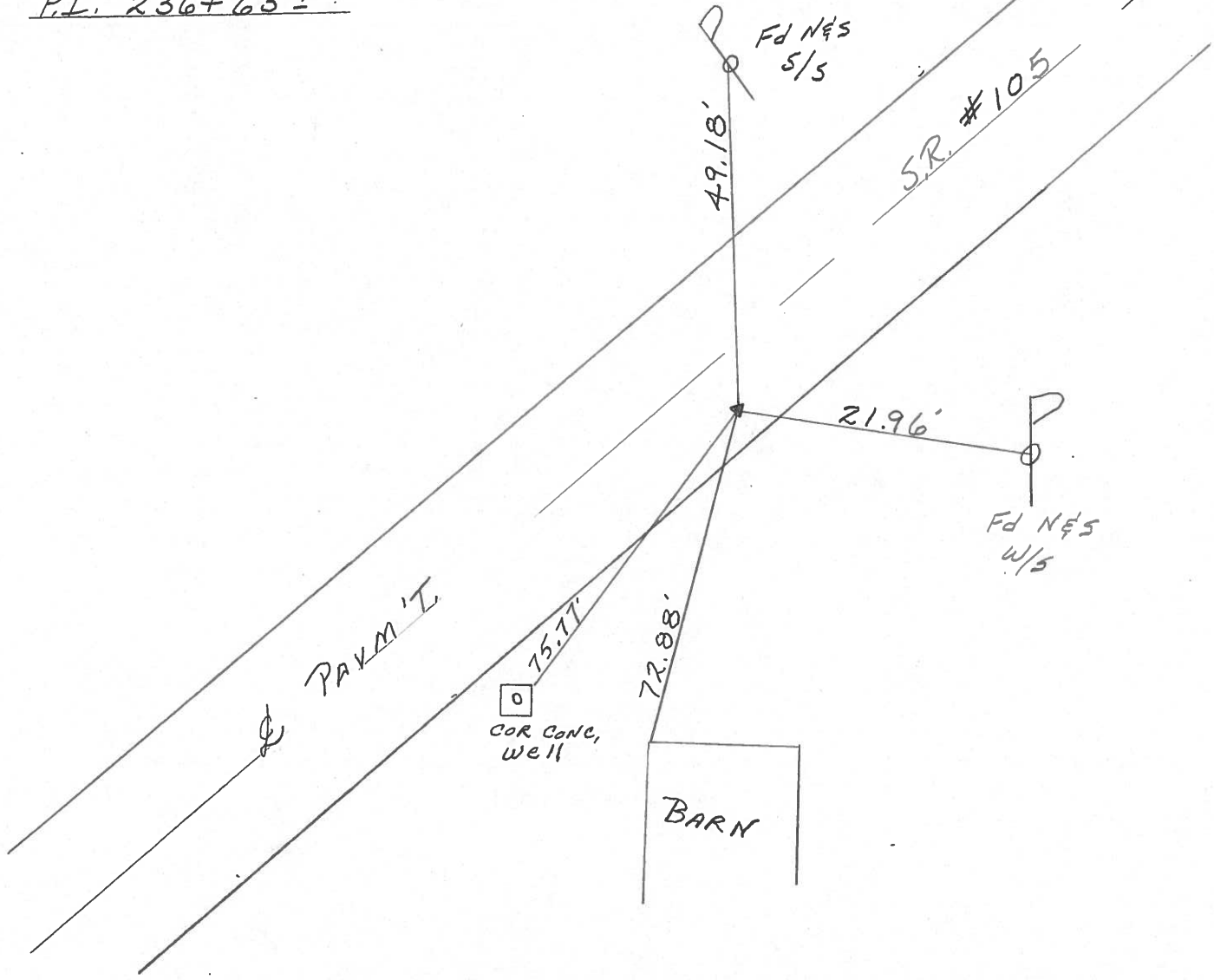
T6 NR 13 E

TYPE MONUMENT PK & WASHER
 ON SURFACE - ~~BELOW~~ ON
~~LEFT & PAV'T.~~ - RIGHT 6' RT & PAVM'T.
3.5 TO RT. EDGE PAVEMENT
 S.L.M. 236+81



Record: 7-24-85
SLM 4.48 ± PK & WASHER ATOP
BOAT SPK. & WASHER - ON SURFACE
P.I. 236+65 ±

Set PK & Washer
 8-18-1994
 JLR



O.D.O.T. DISTRICT 2 SURVEY OFFICE

PERSONNEL

NOTES CRONIN
 H.C. RIPPLE
 R.C. BARBOUR
GEYMAN

REFERENCE NO. _____

DATE 7/24/85
 WEATHER SUNNY
 TEMP. 72°

SHEET 5 OF _____

ROUTE 105
 COUNTY SANDUSKY
 TOWNSHIP WOODVILLE
 SECTION 27
 T 6 N 13 E

TYPE MONUMENT PK. WASHER ATOP BOAT SPIKE
 ON SURFACE - BELOW WASHER - ON SURFACE
 LEFT - PAV'T. - RIGHT 6" PL. & PAINT.
 TO EDGE PAVEMENT
 S.L.M. 4.48±

17

