

O.D.O.T. DISTRICT 2 SURVEY OFFICE (USE ONLY)

PERSONNEL

REFERENCE NO. 18

SHEET 3 OF 10

NOTES HOMAN

DATE 5/1/13

ROUTE SR 105

H.C. HOMAN

WEATHER SUNNY

COUNTY SANDUSKY

R.C. ROUSOS

TEMP. 59°

TOWNSHIP WOODVILLE

SECTION 27

T 6 N R 13 E

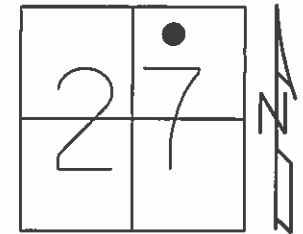
TYPE MONUMENT P.K./WASHER

ON SURFACE - ~~BELOW~~ ON

~~LEFT~~ - Q PAV'T - RIGHT 5.0'

4.2' TO RT EDGE PAVEMENT

S.L.M. 241+81



Grid: Northing: 652640.409 Easting: 1737268.871

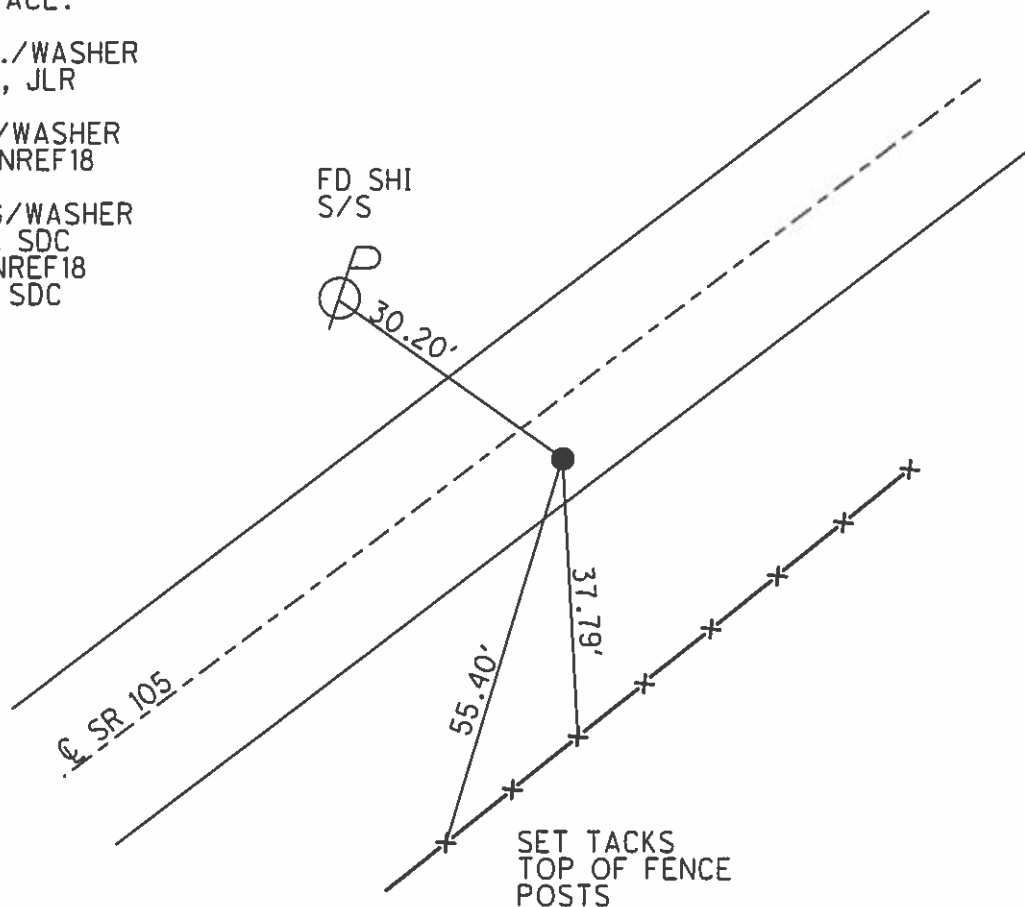
RECORD:

P.I. 241+90  
P.K./WASHER ATOP  
BOAT SPIKE AND WASHER  
ON SURFACE.

SET P.K./WASHER  
8/18/94, JLR

FD P.K./WASHER  
GPS, SANREF18

SET MAG/WASHER  
6/12/13, SDC  
GPS, FINREF18  
7/11/13, SDC



O.D.O.T. DISTRICT 2 SURVEY OFFICE

PERSONNEL

REFERENCE NO. 18

SHEET 6 OF 13

NOTES RIPPLE

H.C. RIPPLE

R.C. GEYMAN

DATE 8-18-1994

WEATHER SUNNY

TEMP. 75°

ROUTE #105

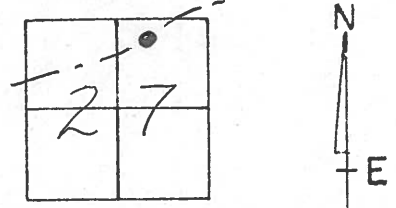
COUNTY SANDUSKY

TOWNSHIP Woodville

SECTION 27

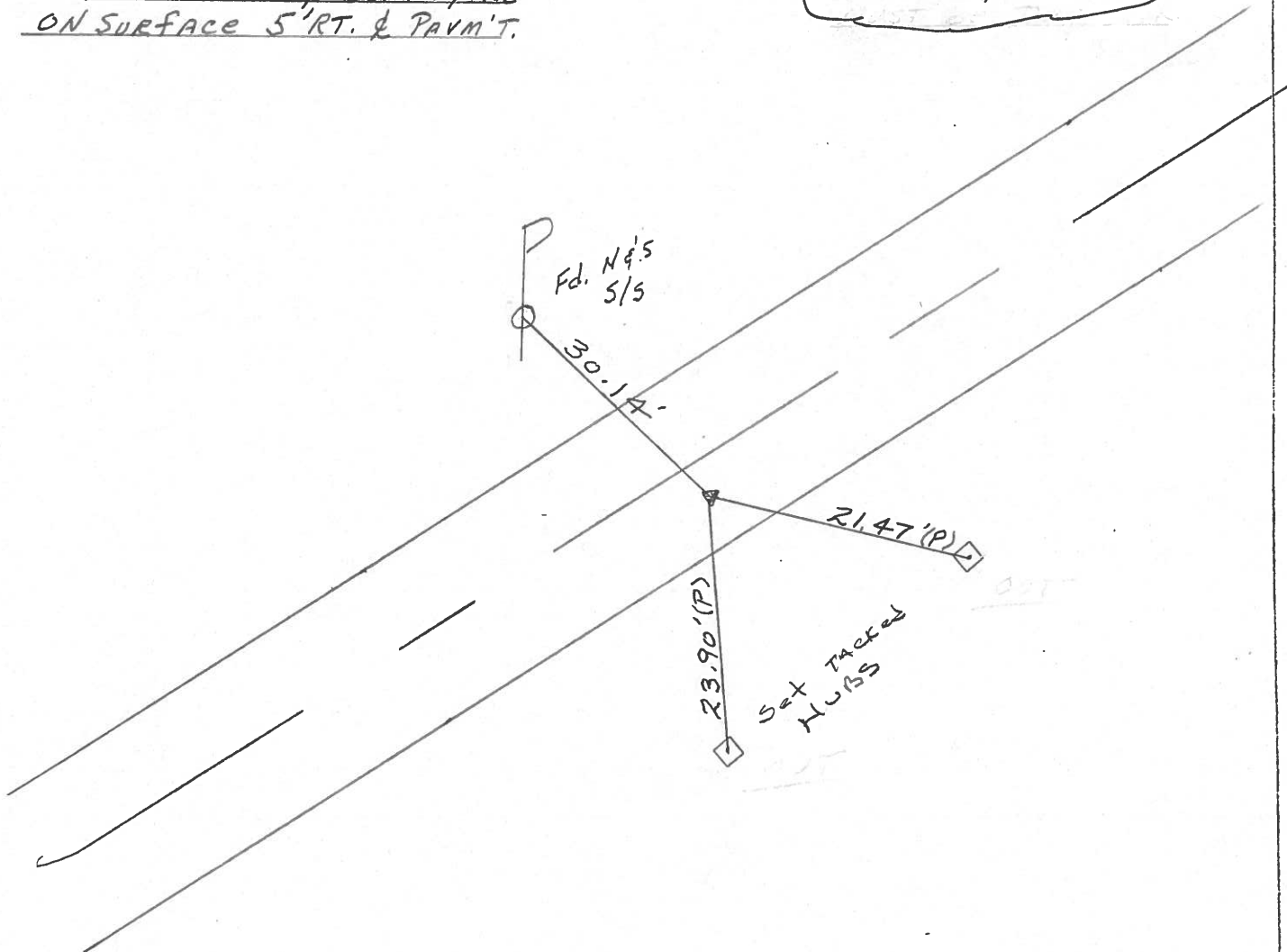
T. 6 N R. 13 E

TYPE MONUMENT P.K. & Washer  
 ON SURFACE - BELOW 1/2" down  
 LEFT - & PAV'T. - RIGHT 5' RT. & PAV'T.  
4.2 TO RT. EDGE PAVEMENT  
 S.L.M. 241+81



Record: P.I. 241+90±  
P.K. & Washer ATop Boat spike  
ON SURFACE 5' RT. & PAV'T.

Set PK & Washer  
8-18-94 JLR



O.D.O.T. DISTRICT 2 SURVEY OFFICE

PERSONNEL

NOTES CROWIN  
H.C. RIPPLE  
R.C. BARBOUR  
GEYMAN

REFERENCE NO. \_\_\_\_\_

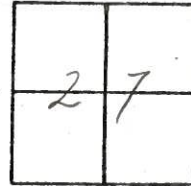
SHEET 6 OF \_\_\_\_\_

DATE 7/24/85  
WEATHER SUNNY  
TEMP. 72°

ROUTE 105  
COUNTY SANDUSKY  
TOWNSHIP WOODVILLE  
SECTION 27  
T. 6 N. R. 13 E.

TYPE MONUMENT P.K. & WASHER ATOP BOAT  
ON SURFACE - BELOW SPIKE - ON SURFACE  
LEFT - PAV'T. - RIGHT 5' L. & PAUM'T  
TO EDGE PAVEMENT  
S.L.M. 4.58 ±

18



P.E.  
241+90 ±

