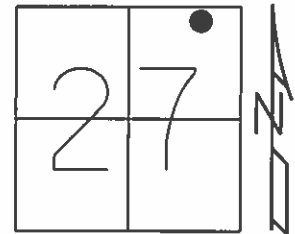


O.D.O.T. DISTRICT 2 SURVEY OFFICE (USE ONLY)

PERSONNEL	REFERENCE NO. <u>19</u>	SHEET <u>4</u> OF <u>10</u>
NOTES <u>RHOADES</u>	DATE <u>6/12/13</u>	ROUTE <u>SR 105</u>
H.C. <u>CODER</u>	WEATHER <u>HAZY</u>	COUNTY <u>SANDUSKY</u>
R.C. <u>RHOADES</u>	TEMP. <u>78°</u>	TOWNSHIP <u>WOODVILLE</u>
		SECTION <u>27</u>
		T <u>6</u> N R <u>13</u> E

TYPE MONUMENT 5/8" IPIN  
 ON SURFACE - ~~BELOW~~ ON \_\_\_\_\_  
~~LEFT~~ - Q PAV'T - RIGHT 13.0'  
3.5' TO RT EDGE PAVEMENT  
 S.L.M. 250+30  
 Grid: Northing: 653182.086 Easting: 1737922.469

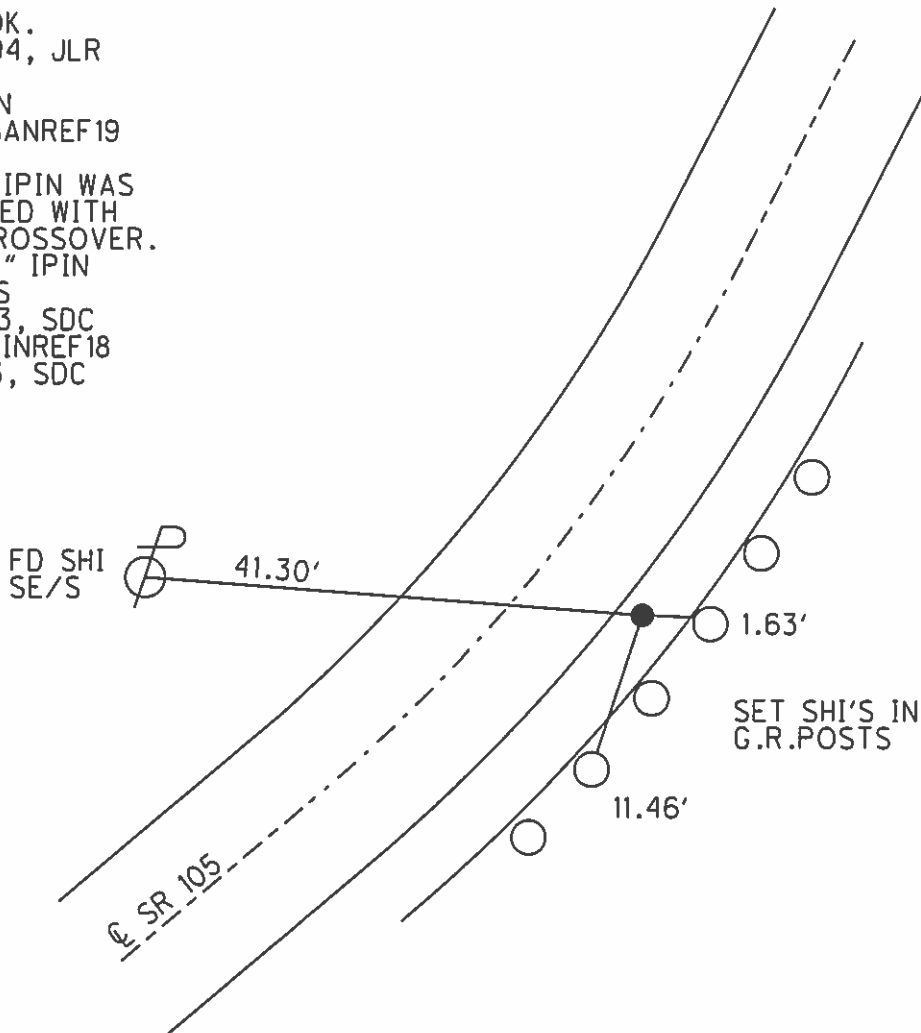


RECORD:  
 P.I. 250+36, SLM= 4.74

TIES OK.  
 8/18/94, JLR

FD IPIN  
 GPS, SANREF19

NOTE: IPIN WAS  
 REMOVED WITH  
 NEW CROSSOVER.  
 SET 5/8" IPIN  
 W/ GPS  
 6/12/13, SDC  
 GPS, FINREF18  
 7/11/13, SDC



O.D.O.T. DISTRICT 2 SURVEY OFFICE

PERSONNEL

REFERENCE NO. 19

SHEET 7 OF 13

NOTES RIPPLE

H.C. RIPPLE

R.C. GEYMAN

DATE 8-18-94

WEATHER SUNNY

TEMP. 75°

ROUTE #105

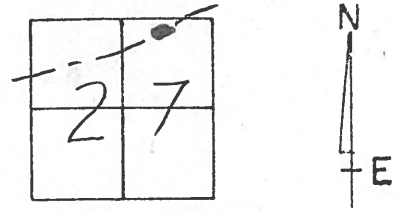
COUNTY SANDUSKY

TOWNSHIP Woodville

SECTION 27

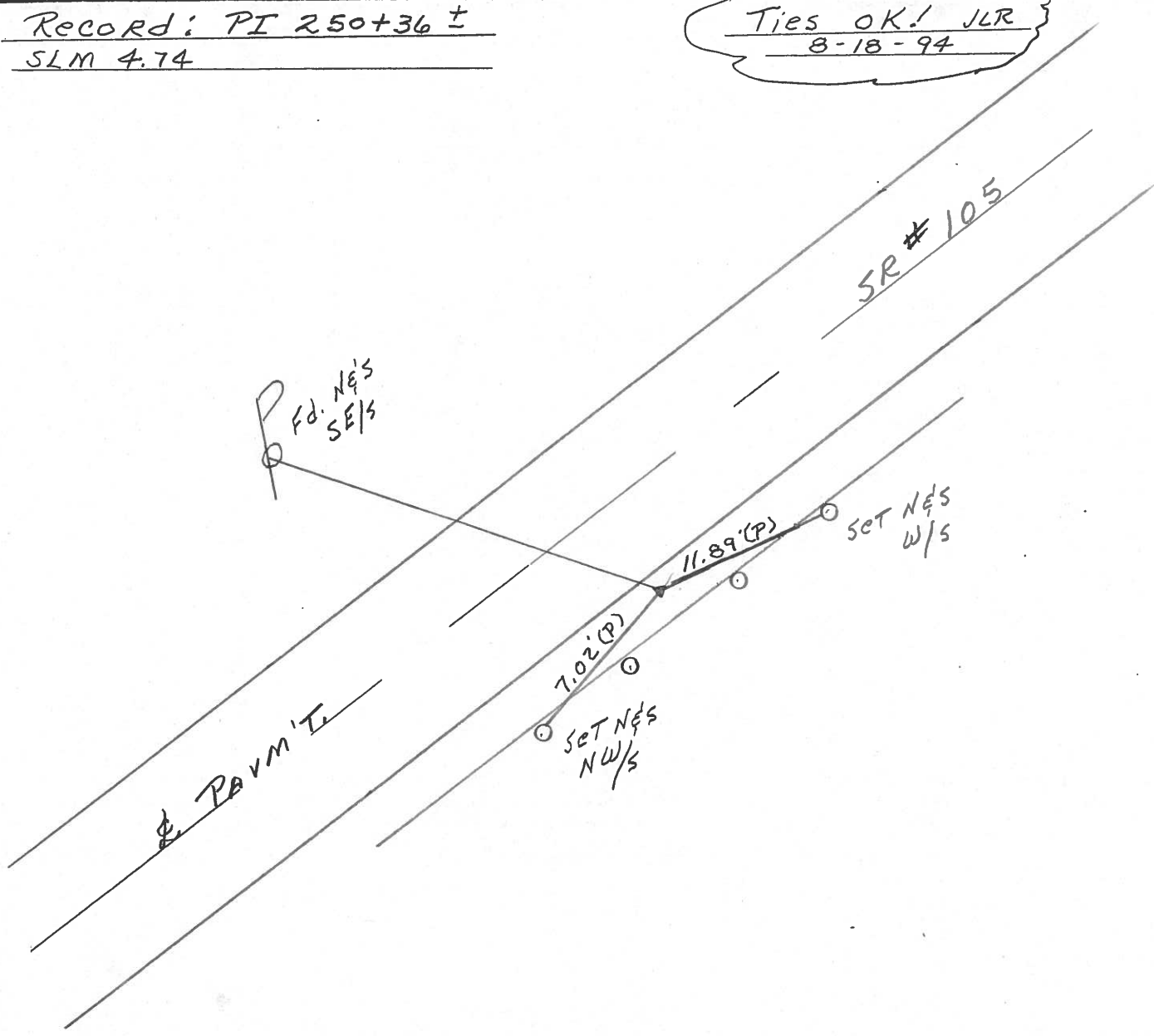
T. 6 N. R. 13 E

TYPE MONUMENT 1/2" IRON PIN  
ON SURFACE - BELOW 1" Below  
LEFT - ℄ PAV'T. - RIGHT 13' RT & PAVM'T.  
3.5' TO RT. EDGE PAVEMENT  
S.L.M. 250+30



Record: PI 250+36 ±  
SLM 4.74

Ties OK! JLR  
8-18-94



# O.D.O.T. DISTRICT 2 SURVEY OFFICE

PERSONNEL \_\_\_\_\_

REFERENCE NO. \_\_\_\_\_

SHEET 7 OF \_\_\_\_\_

NOTES CROWN

H.C. RIPPLE

R.C. BARBOUR

GEYMAN

DATE 7/24/85

WEATHER SUNNY

TEMP. 75°

ROUTE 105

COUNTY SANDUSKY

TOWNSHIP WOODVILLE

SECTION 27

T 6 N R 13 E

TYPE MONUMENT Iron Pin (1/2" x 1/2")

ON SURFACE - BELOW 3" below

LEFT - CL PAV'T. - RIGHT 13' Rt. & Pavmt.

4' TO Lt. EDGE PAVEMENT

S.L.M. 4.74

19

