

O.D.O.T. DISTRICT 2 SURVEY OFFICE (USE ONLY)

PERSONNEL

REFERENCE NO. 20

SHEET 5 OF 11

NOTES MILLER DATE 12/28/23

H.C. RHOADES WEATHER RAIN

R.C. MILLER TEMP. 44°

ROUTE SR 105

COUNTY SANDUSKY

TOWNSHIP WOODVILLE

SECTION 22

DWG BY RHOADES PID PAVING TRAIN

T 6 N R 13 E

TYPE MONUMENT MAG/WASHER

ON SURFACE - ~~BELOW~~ ON

OFFSET 0.8' LT : ~~RT~~

9.0' TO LT EDGE PAVEMENT

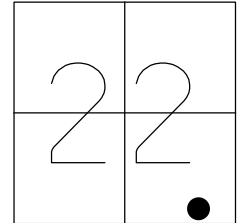
STATION: 257+12

HORZ.DATUM: NAD83 2011

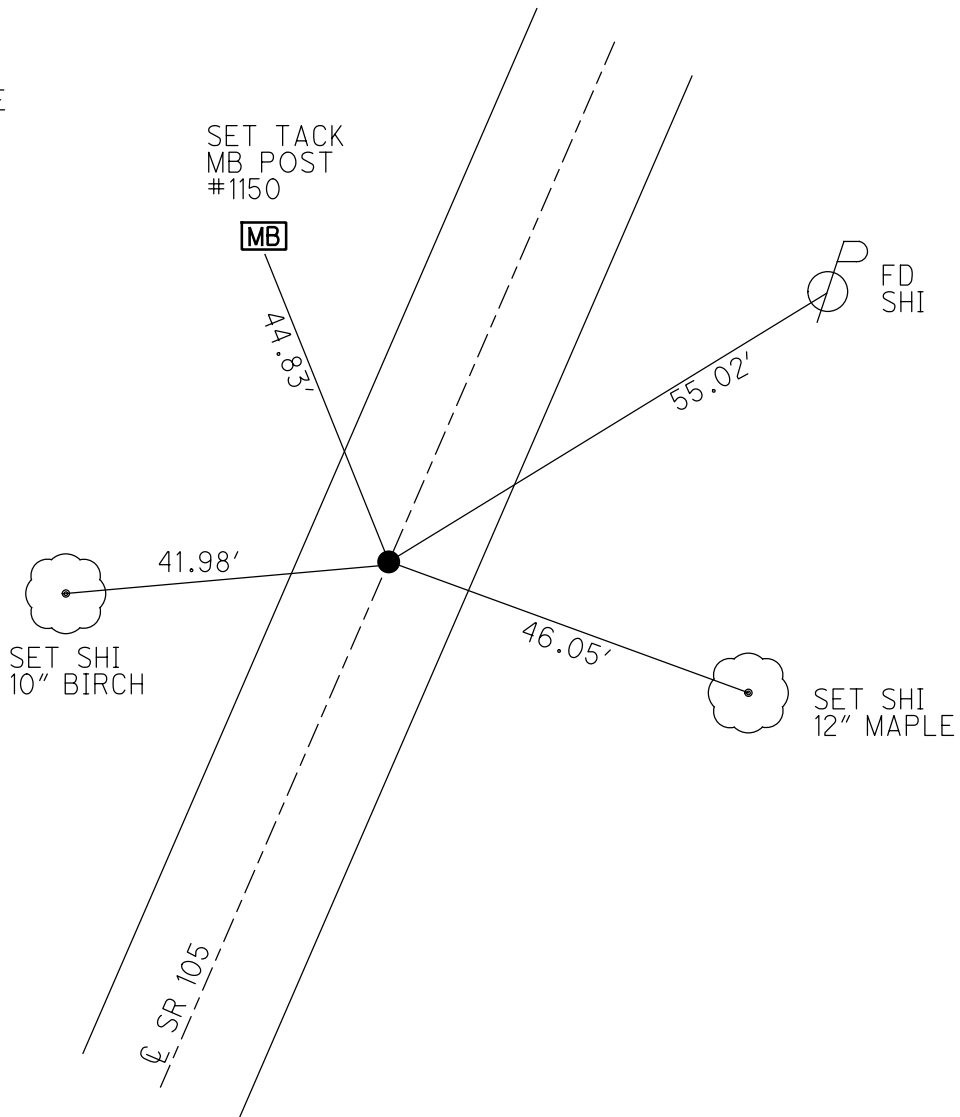
GEOID: NAVD88 2018

GRID: NORTHING: 653801.544

EASTING: 1738209.084



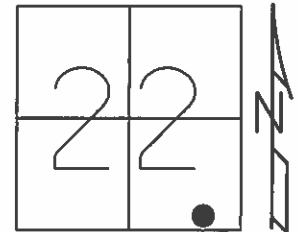
RECORD: P.I.  
 STA. 257+20  
 P.K./WASHER  
 ATOP BOAT SPIKE  
 7/24/85  
 SET P.K./WASHER  
 8/18/94, JLR  
 FD P.K.SHANK  
 SANREF20  
 5/1/13, SDC  
 SET MAG/WASHER  
 FINREF20  
 7/11/13, SDC  
 FD MAG/WASHER  
 REF20  
 7/6/23, DSA  
 12/28/23, JMR



O.D.O.T. DISTRICT 2 SURVEY OFFICE (USE ONLY)

PERSONNEL \_\_\_\_\_ REFERENCE NO. 20 SHEET 5 OF 10  
 NOTES HOMAN DATE 5/1/13 ROUTE SR 105  
 H.C. HOMAN WEATHER SUNNY COUNTY SANDUSKY  
 R.C. ROUSOS TEMP. 60° TOWNSHIP WOODVILLE  
 \_\_\_\_\_ SECTION 22  
 \_\_\_\_\_ T 6 N R 13 E

TYPE MONUMENT P.K. SHANK  
~~ON SURFACE~~ - BELOW 1"  
 LEFT - C PAV'T - RIGHT ON  
9.0' TO LT EDGE PAVEMENT  
 S.L.M. 257+12  
 Grid: Northing: 653801.544 Easting: 1738209.084

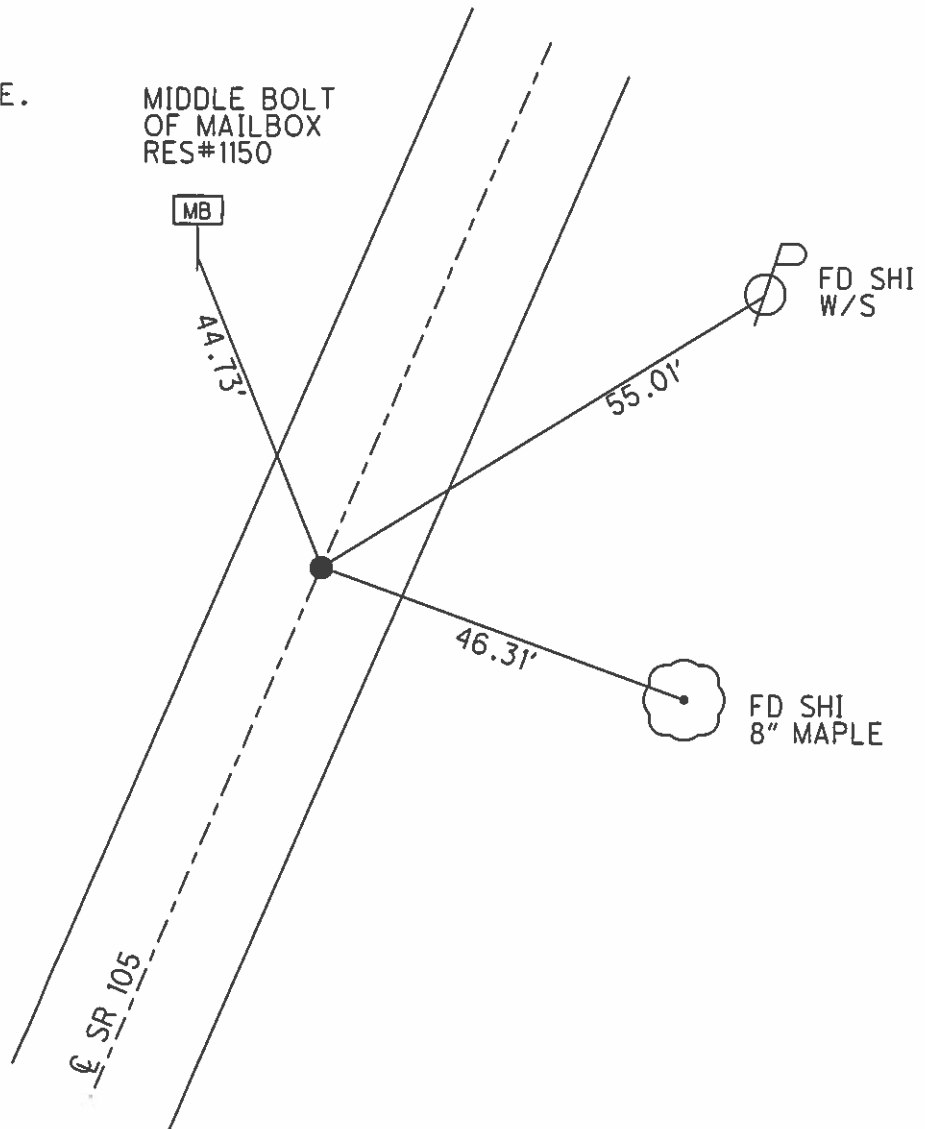


RECORD:  
 P.I. 257+20, SLM= 4.88  
 P.K./WASHER ATOP  
 BOAT SPIKE ON SURFACE.  
 7/24/85

SET P.K./WASHER  
 8/18/94, JLR

FD P.K./WASHER  
 GPS, SANREF20

SET MAG/WASHER  
 6/12/13, SDC  
 GPS, FINREF20  
 7/11/13, SDC



O.D.O.T. DISTRICT 2 SURVEY OFFICE

PERSONNEL

REFERENCE NO. 20

SHEET 8 OF 13

NOTES RIPPLE

H.C. RIPPLE

R.C. GEYMAN

DATE 8-18-1994

WEATHER SUNNY

TEMP. 75°

ROUTE #105

COUNTY SANDUSKY

TOWNSHIP Woodville

SECTION 22

T. 6 N. R. 13 E

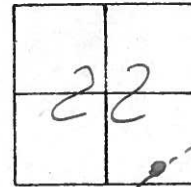
TYPE MONUMENT PK&Washer

ON SURFACE - ~~BELOW~~ ON

~~LEFT & PAV'T.~~ - ~~RIGHT~~ ON

9.0 TO LT. EDGE PAVEMENT

S.L.M. 257+12



Record 7-24-1985  
PI 257+20± SLM 4.88±  
PK&Washer ATOP Boat Spike  
ON SURFACE

Set PK&Washer  
 8-18-1994  
 JLR

RES #1150

SR #105

MB

Set N&S  
 IN COR  
 RR Tie M.B.  
 Post SE 1/4

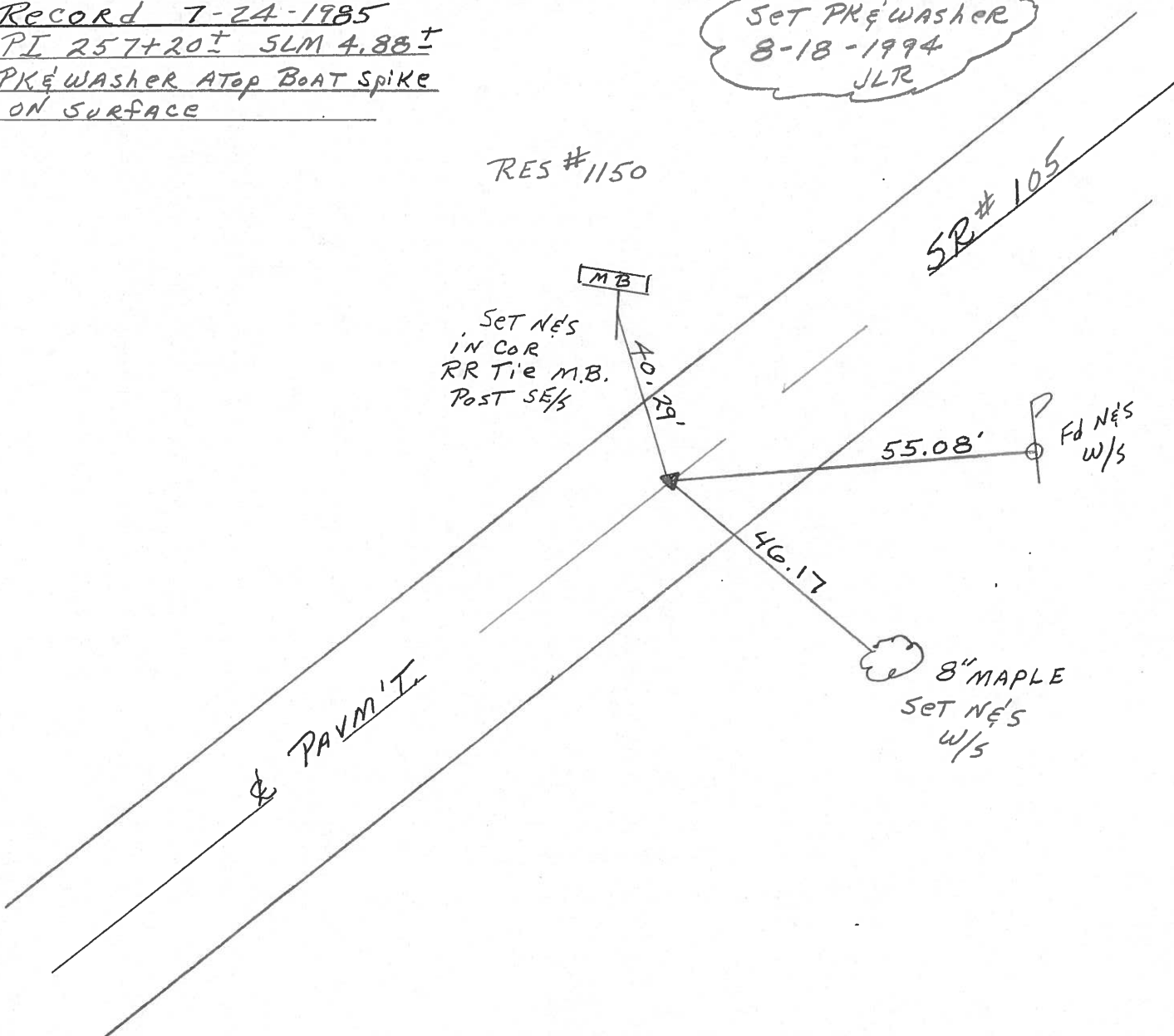
40.29'

55.08' Fd N&S  
 W/S

46.17'

8" MAPLE  
 Set N&S  
 W/S

& PAVM'T.



O.D.O.T. DISTRICT 2 SURVEY OFFICE

PERSONNEL

REFERENCE NO. \_\_\_\_\_

SHEET 8 OF \_\_\_\_\_

NOTES CROWN

H.C. RIFFLE

R.C. BARBOUR

GEYMAN

DATE 7/24/85

WEATHER SUNNY

TEMP. 75°

ROUTE 105

COUNTY SANDUSKY

TOWNSHIP WOODVILLE

SECTION 27

T. 6 N. R. 13 E.

TYPE MONUMENT P.K. WASHER ATOP BOAT

ON SURFACE - BELOW SPIKE - ON SURFACE

LEFT - ☉ PAV'T. - RIGHT ☉

TO \_\_\_\_\_ EDGE PAVEMENT

S.L.M. 4.88±

**20**

