

O.D.O.T. DISTRICT 2 SURVEY OFFICE (USE ONLY)

PERSONNEL

REFERENCE NO. 21

SHEET 6 OF 11

NOTES MILLER

DATE 12/28/23

ROUTE SR 105

H.C. RHOADES

WEATHER RAIN

COUNTY SANDUSKY

R.C. MILLER

TEMP. 44°

TOWNSHIP WOODVILLE

SECTION 22

DWG BY RHOADES PID PAVING TRAIN

T 6 N R 13 E

TYPE MONUMENT MAG/WASHER

ON SURFACE - ~~BELOW~~ ON

OFFSET  $\varnothing$  PAVEMENT 4' LT : ~~RT~~

8.8' TO LT EDGE PAVEMENT

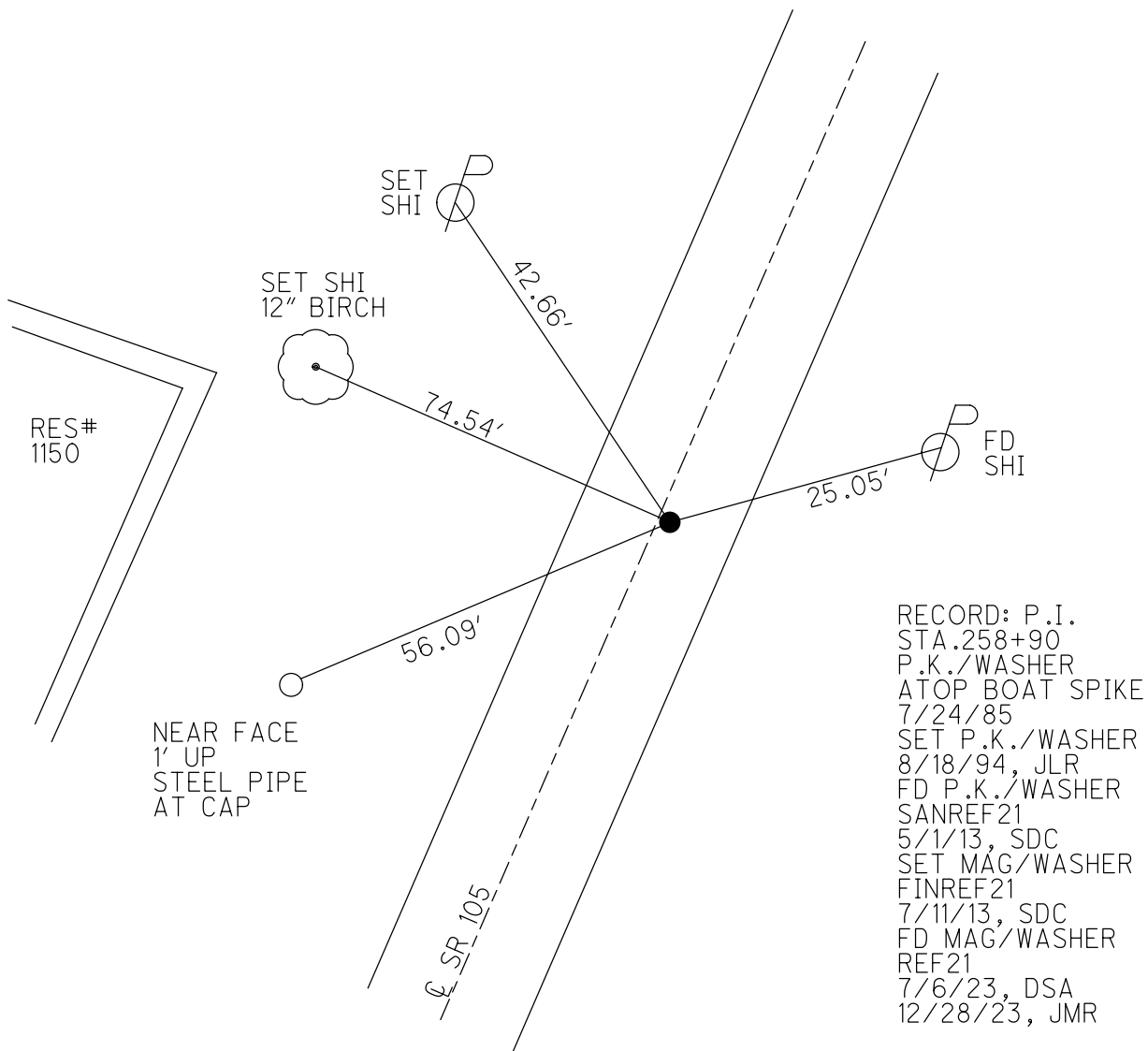
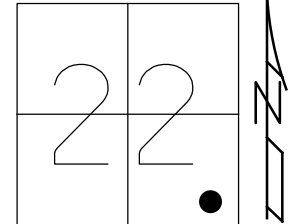
STATION: 258+77

HORIZ.DATUM: NAD83 2011

GEOID: NAVD88 2018

GRID: NORTHING: 653949.699

EASTING: 1738279.997

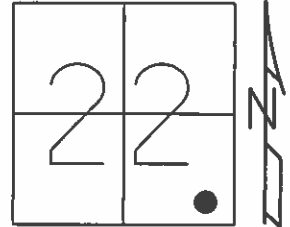


RECORD: P.I.  
 STA.258+90  
 P.K./WASHER  
 ATOP BOAT SPIKE  
 7/24/85  
 SET P.K./WASHER  
 8/18/94, JLR  
 FD P.K./WASHER  
 SANREF21  
 5/1/13, SDC  
 SET MAG/WASHER  
 FINREF21  
 7/11/13, SDC  
 FD MAG/WASHER  
 REF21  
 7/6/23, DSA  
 12/28/23, JMR

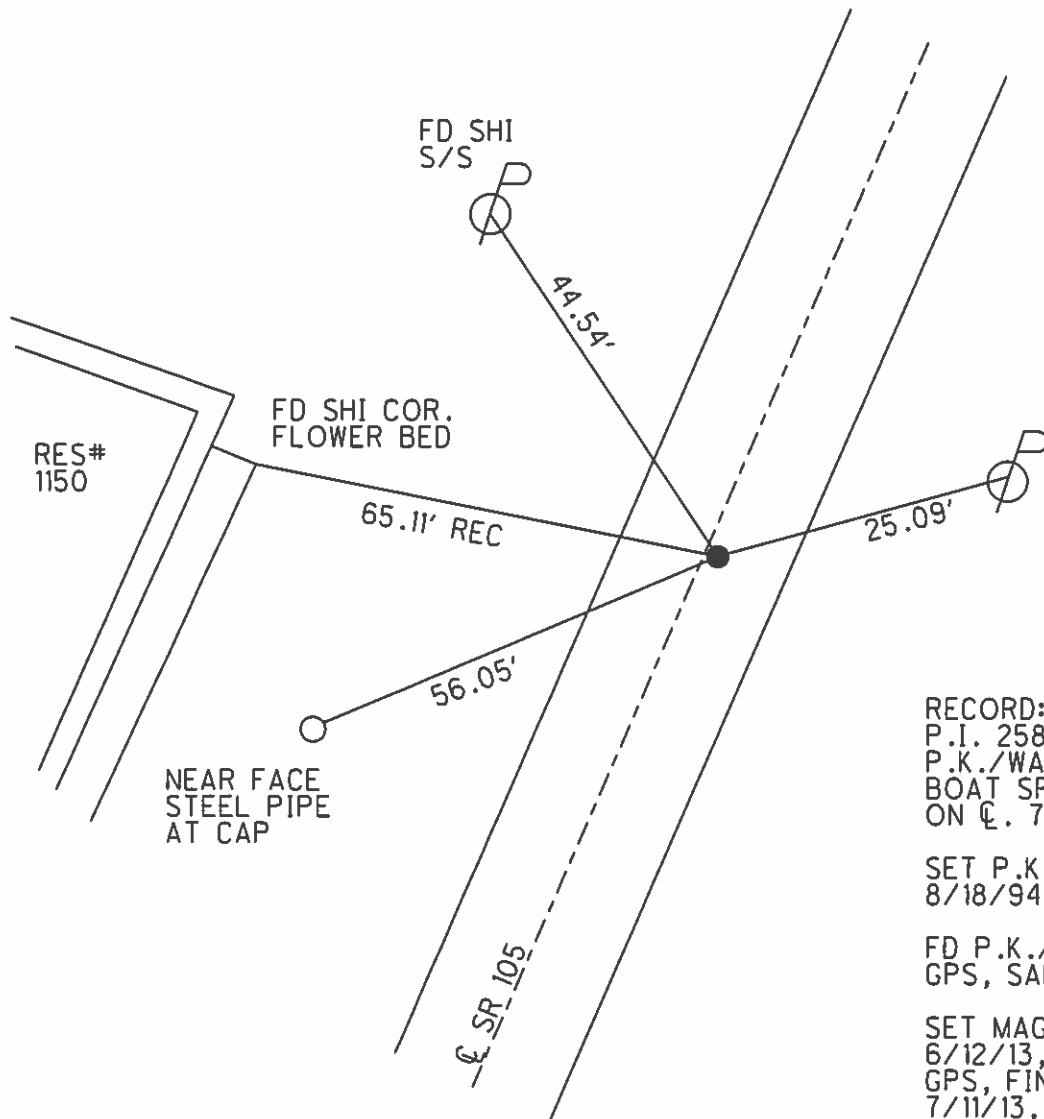
O.D.O.T. DISTRICT 2 SURVEY OFFICE (USE ONLY)

PERSONNEL \_\_\_\_\_ REFERENCE NO. 21 SHEET 6 OF 10  
 NOTES HOMAN DATE 5/1/13 ROUTE SR 105  
 H.C. HOMAN WEATHER SUNNY COUNTY SANDUSKY  
 R.C. ROUSOS TEMP. 60° TOWNSHIP WOODVILLE  
 \_\_\_\_\_ SECTION 22  
 \_\_\_\_\_ T 6 N R 13 E

TYPE MONUMENT P.K./WASHER  
 ON SURFACE - ~~BELOW~~ ON  
 LEFT - CL PAV'T - ~~RIGHT~~ 0.8'  
8.8' TO LT EDGE PAVEMENT  
 S.L.M. 258+77



Grid: Northing: 653949.699 Easting: 1738279.997



RECORD:  
 P.I. 258+90, SLM= 4.90  
 P.K./WASHER ATOP  
 BOAT SPIKE ON SURFACE.  
 ON CL. 7/24/85  
  
 SET P.K./WASHER  
 8/18/94, JLR  
  
 FD P.K./WASHER  
 GPS, SANREF21  
  
 SET MAG/WASHER  
 6/12/13, SDC  
 GPS, FINREF21  
 7/11/13, SDC

# O.D.O.T. DISTRICT 2 SURVEY OFFICE

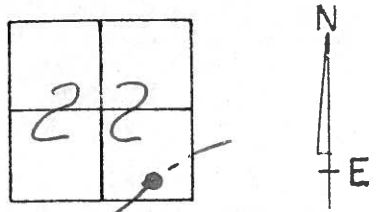
PERSONNEL \_\_\_\_\_ REFERENCE NO. 21 SHEET 9 OF 13

NOTES RIPPLE  
 H.C. RIPPLE  
 R.C. GEYMAN

DATE 8-18-94  
 WEATHER SUNNY  
 TEMP. 75°

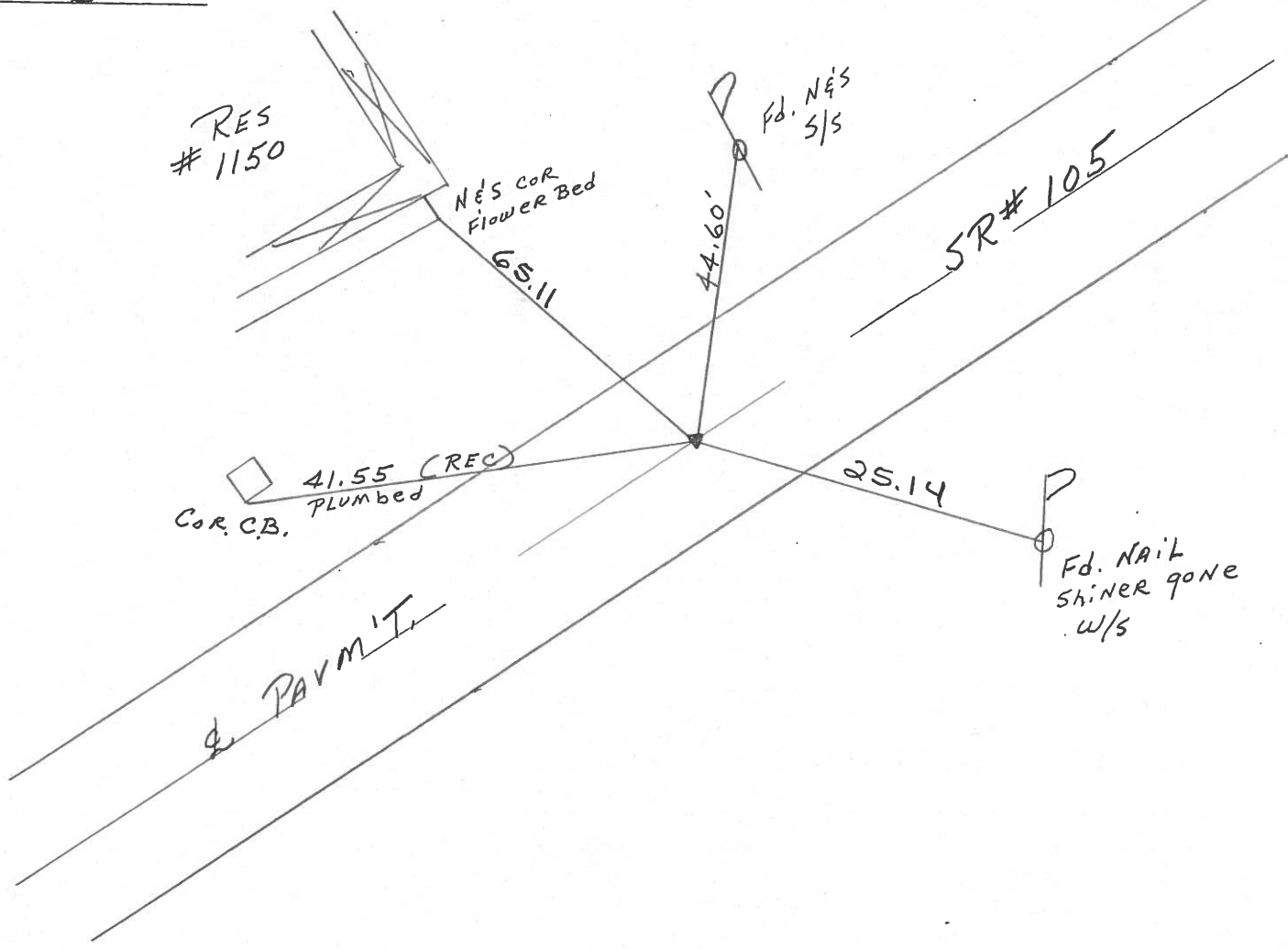
ROUTE #105  
 COUNTY SANDUSKY  
 TOWNSHIP Woodville  
 SECTION 22  
 T6 N R 13 E

TYPE MONUMENT PK&WASHER  
 ON SURFACE - ~~BELOW~~ ON  
~~LEFT- & PAV'T.~~ - RIGHT ON  
 S. 8 TO L.T. EDGE PAVEMENT  
 S.L.M. 258+77



Record: 7-24-85  
PI 258+90± SLM 4.90±  
PK&WASHER ATOP BOAT SPIKE-ON SURFACE  
ON &

Set PK&WASHER  
8-18-94 JLR.



O.D.O.T. DISTRICT 2 SURVEY OFFICE

PERSONNEL

NOTES CRONIN  
H.C. RIPPLE  
R.C. BARBOUR  
GEYMAN

REFERENCE NO. \_\_\_\_\_

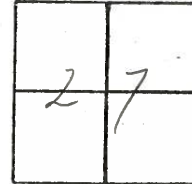
DATE 7/24/85  
WEATHER SUNNY  
TEMP. 75°

SHEET 9 OF \_\_\_\_\_

ROUTE 105  
COUNTY SANDUSKY  
TOWNSHIP WOODVILLE  
SECTION 27  
T. 6 N. R. 13 E

TYPE MONUMENT P.K. WASHER ATOP BOAT  
ON SURFACE - BELOW SPIKE - ON SURFACE  
LEFT - & PAV'T. - RIGHT E  
TO EDGE PAVEMENT  
S.L.M. 490 ±

21



P.F.  
258+90 ±

