

O.D.O.T. DISTRICT 2 SURVEY OFFICE (USE ONLY)

PERSONNEL

REFERENCE NO. 22

SHEET 7 OF 11

NOTES MILLER DATE 12/28/23

H.C. RHOADES WEATHER RAIN

R.C. MILLER TEMP. 44°

ROUTE SR 105

COUNTY SANDUSKY

TOWNSHIP WOODVILLE

SECTION 22

DWG BY RHOADES PID PAVING TRAIN

T 6 N R 13 E

TYPE MONUMENT MAG/WASHER

ON SURFACE - ~~BELOW~~ ON

OFFSET Q PAVEMENT ON LT : RT

9.8' TO RT EDGE PAVEMENT

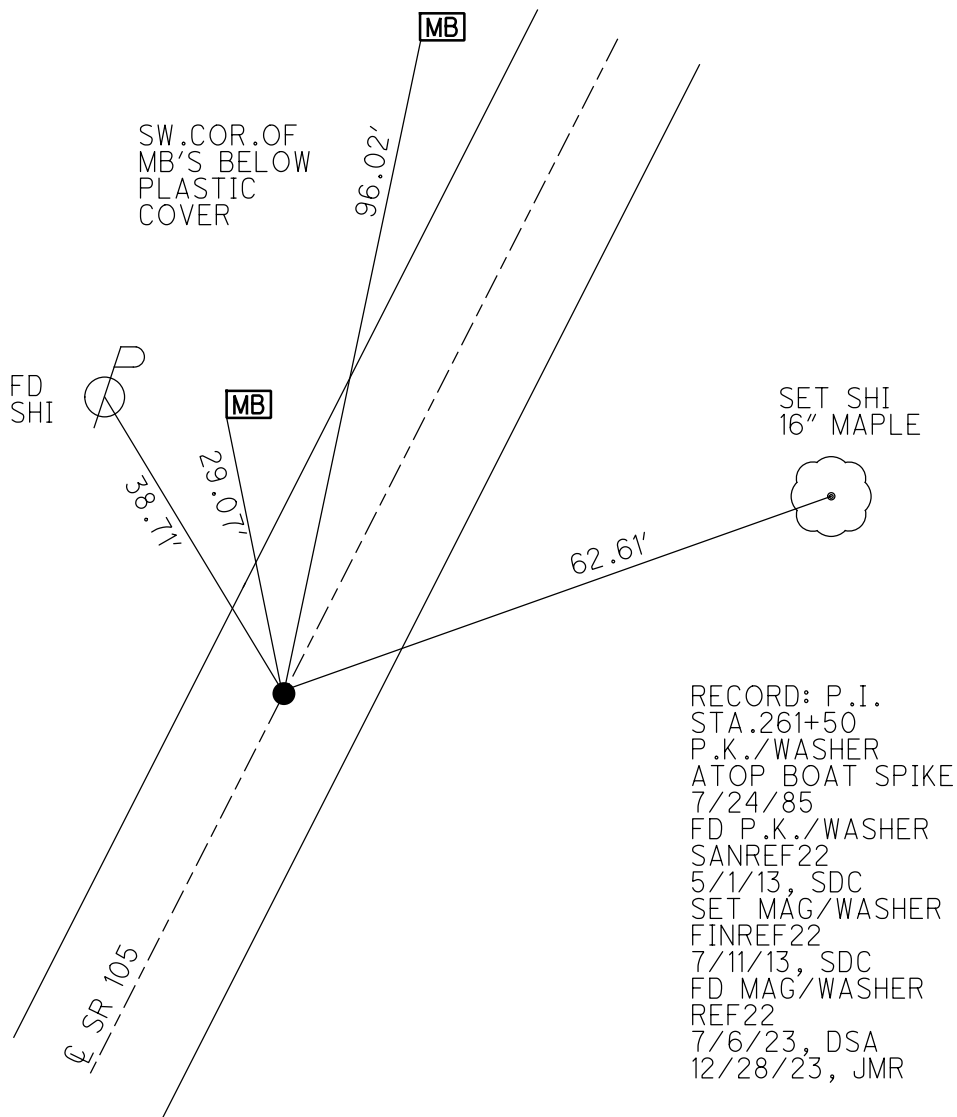
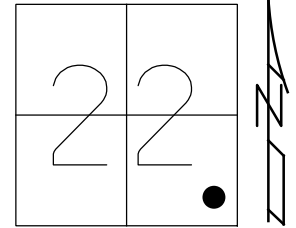
STATION: 261+26

HORIZ.DATUM: NAD83 2011

GEOID: NAVD88 2018

GRID: NORTHING: 654168.538

EASTING: 1738396.013



O.D.O.T. DISTRICT 2 SURVEY OFFICE (USE ONLY)

PERSONNEL _____

REFERENCE NO. 22

SHEET 7 OF 10

NOTES HOMAN

DATE 5/1/13

ROUTE SR 105

H.C. ROUSOS

WEATHER SUNNY

COUNTY SANDUSKY

R.C. HOMAN

TEMP. 60°

TOWNSHIP WOODVILLE

SECTION 22

T 6 N R 13 E

TYPE MONUMENT P.K./WASHER

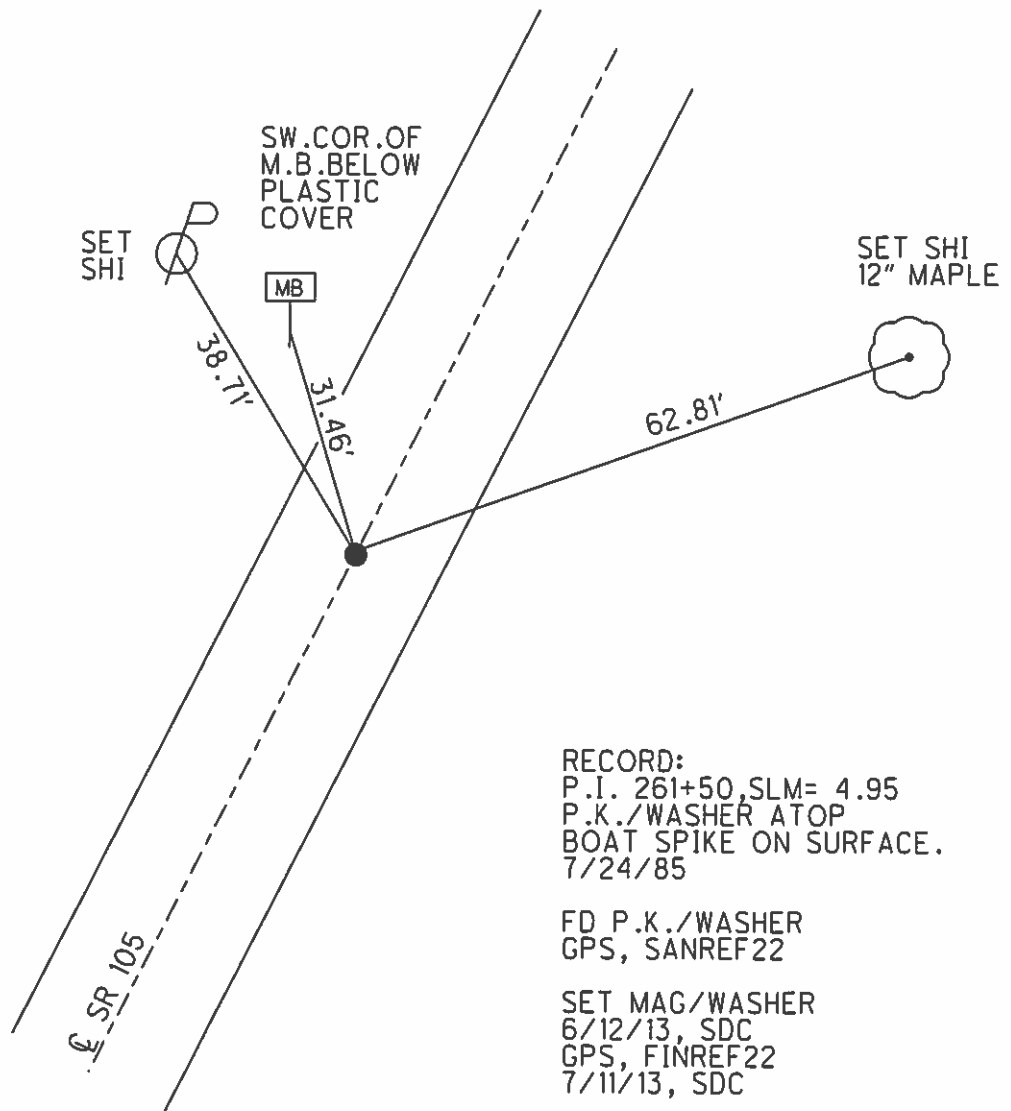
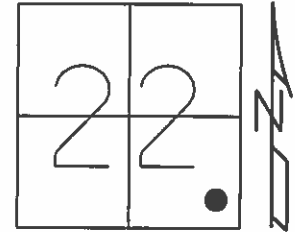
~~ON SURFACE~~ - BELOW 1"

LEFT - CL PAV'T - RIGHT ON

9.8' TO RT EDGE PAVEMENT

S.L.M. 261+26

Grid: Northing: 654168.538 Easting: 1738396.013



RECORD:
 P.I. 261+50, SLM= 4.95
 P.K./WASHER ATOP
 BOAT SPIKE ON SURFACE.
 7/24/85

FD P.K./WASHER
 GPS, SANREF22

SET MAG/WASHER
 6/12/13, SDC
 GPS, FINREF22
 7/11/13, SDC

O.D.O.T. DISTRICT 2 SURVEY OFFICE

PERSONNEL

REFERENCE NO. 22

SHEET 10 OF 13

NOTES RIPPLE

H.C. RIPPLE

R.C. GEYMAN

DATE 8-18-1994

WEATHER SUNNY

TEMP. 75°

ROUTE #105

COUNTY SANDUSKY

TOWNSHIP Woodville

SECTION 22

T 6 N R 13 E

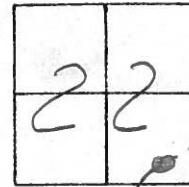
TYPE MONUMENT PK & WASHER

ON SURFACE - ~~BELOW~~ ON

~~LEFT - & PAV'T.~~ - RIGHT ON

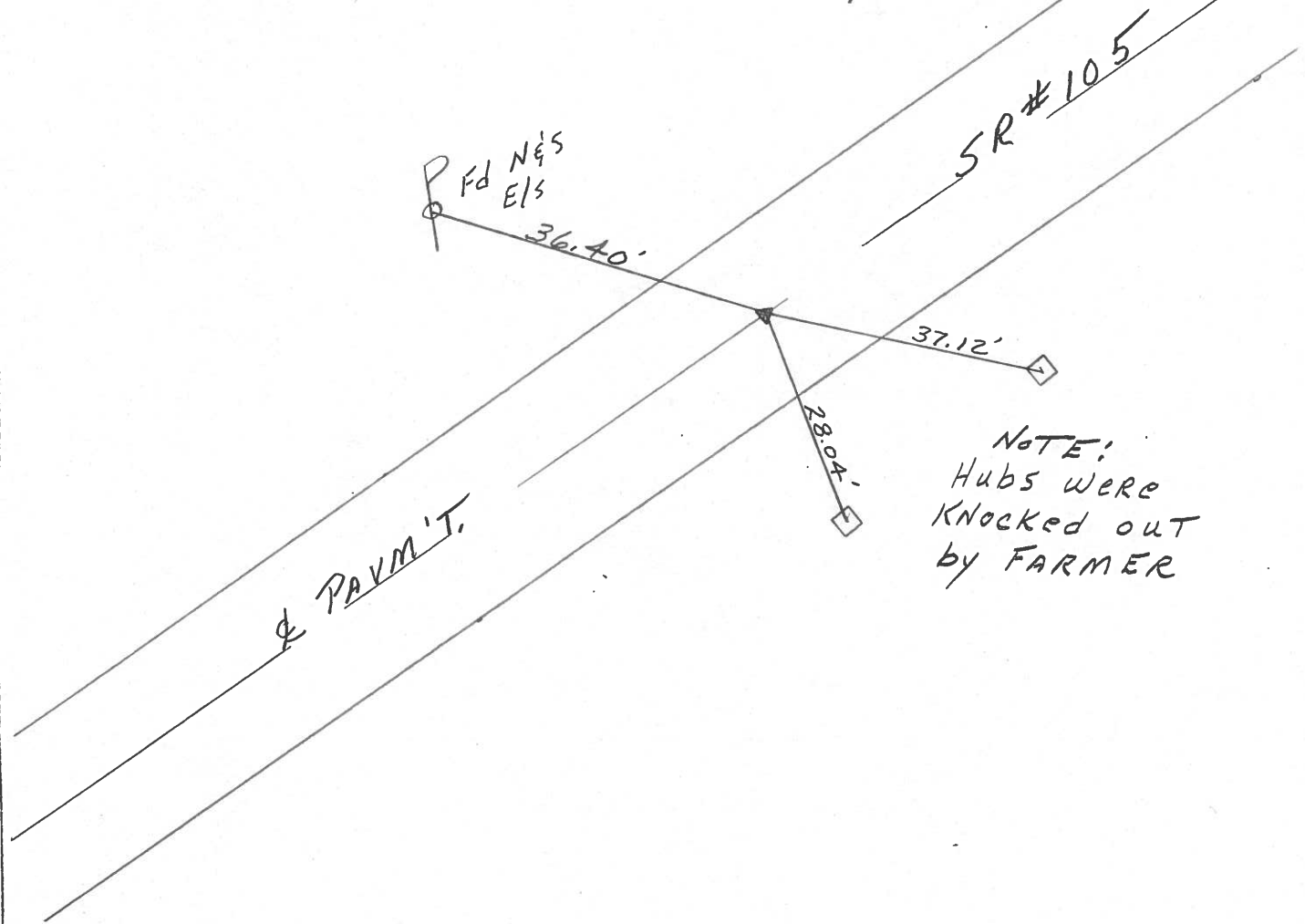
9.8 TO RT. EDGE PAVEMENT

S.L.M. 261+26



Record: 7-24-85
PI 261+50± SLM 4.95±
PK & WASHER ATop BOAT SPIKE-
ON SURFACE

USING 36.40' FROM P
AND GETTING A PULL
WITH THE LOCATOR WE
PAINTED THE SPOT JLR
Dig LATER



O.D.O.T. DISTRICT 2 SURVEY OFFICE

PERSONNEL

NOTES CROWIN
H.C. RIPPLE
R.C. BARBOUR
GEYMAN

REFERENCE NO. _____

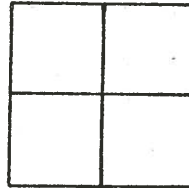
DATE 7/24/85
WEATHER SUNNY
TEMP. 86°

SHEET 1.0 OF _____

ROUTE 105
COUNTY SANDUSKY
TOWNSHIP WOODVILLE
SECTION ??
T.G. NR 13 E

TYPE MONUMENT P.K. WASHER ATop Boat
ON SURFACE - BELOW SPIKE - ON SURFACE
LEFT - & PAV'T. - RIGHT &
TO EDGE PAVEMENT
S.L.M. 1.95 ±

22



P.I.
261750 ±

