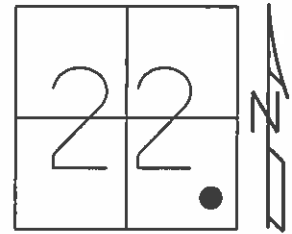


O.D.O.T. DISTRICT 2 SURVEY OFFICE (USE ONLY)

PERSONNEL _____ REFERENCE NO. 23 SHEET 8 OF 10
 NOTES HOMAN DATE 5/1/13 ROUTE SR 105
 H.C. HOMAN WEATHER SUNNY COUNTY SANDUSKY
 R.C. ROUSOS TEMP. 60° TOWNSHIP WOODVILLE
 _____ SECTION 22
 _____ T 6 N R 13 E

TYPE MONUMENT P.K./WASHER
 ON SURFACE - ~~BELOW~~ ON
 LEFT - Q PAV'T - RIGHT ON
9.5' TO RT EDGE PAVEMENT
 S.L.M. 262+78
 Grid: Northing: 654300.087 Easting: 1738469.383



RECORD:
 P.I. 262+80, SLM= 4.98
 P.K./WASHER ATOP
 BOAT SPIKE ON SURFACE.
 7/24/85

SET P.K./WASHER
 8/18/94, JLR

FD P.K./WASHER
 GPS, SANREF23

SET MAG/WASHER
 6/12/13, SDC
 GPS, FINREF23
 7/11/13, SDC

SE.COR.M.B.
 6" UP #1162



57.76'

SR 105

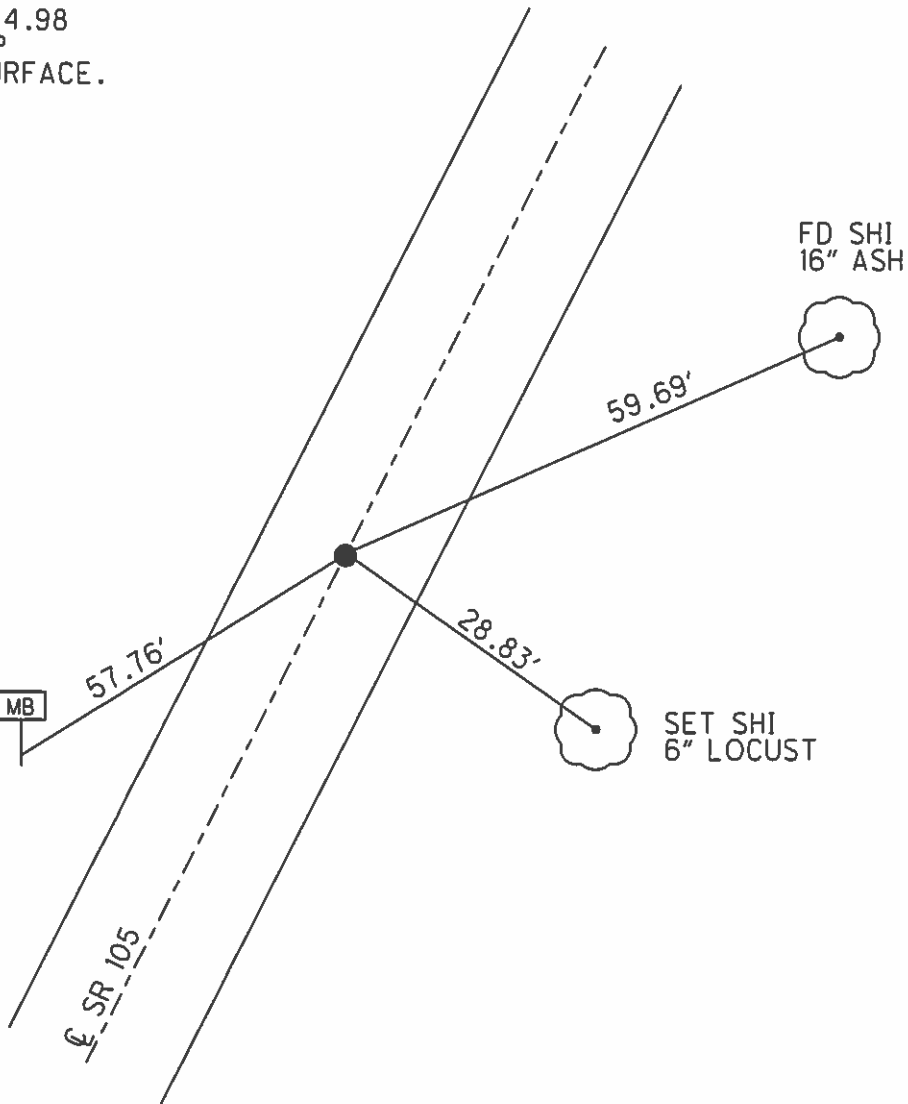
28.83'

59.69'

FD SHI
 16" ASH



SET SHI
 6" LOCUST



O.D.O.T. DISTRICT 2 SURVEY OFFICE

PERSONNEL

REFERENCE NO. 23

SHEET 11 OF 13

NOTES RIPPLE

H.C. RIPPLE

R.C. GEYMAN

DATE 8-18-1994

WEATHER SUNNY

TEMP. 75°

ROUTE #105

COUNTY SANDUSKY

TOWNSHIP Woodville

SECTION 22

T. 6 N R. 13 E

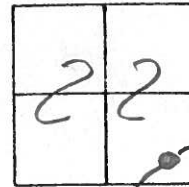
TYPE MONUMENT P.K. Washer

ON SURFACE - ~~BELOW~~ ON

LEFT- & PAV'T. - ~~RIGHT~~ ON

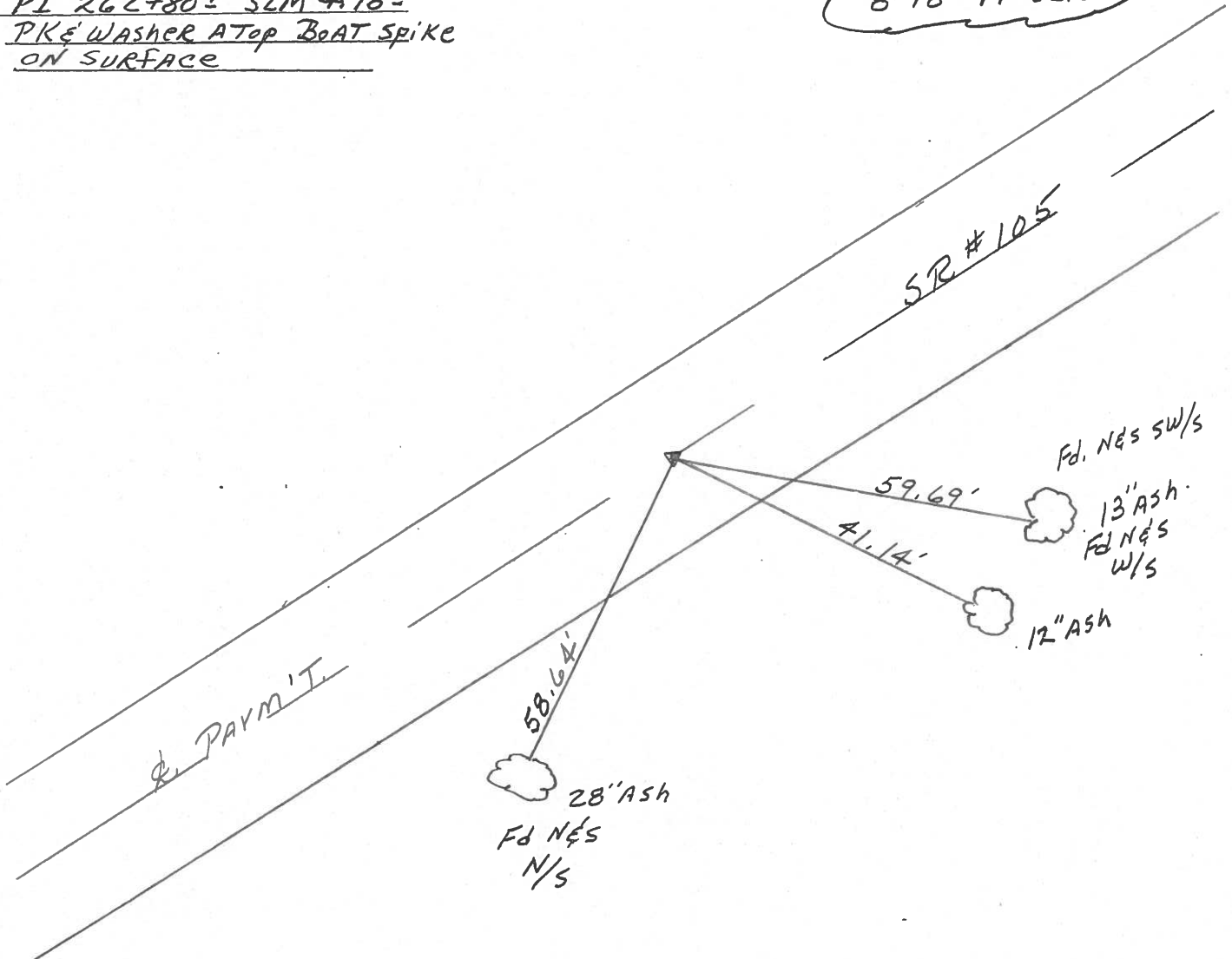
9.5 TO RT. EDGE PAVEMENT

S.L.M. 262+78



Set P.K. Washer
8-18-94 JLR

Record: T-24-85
PI 262+80± SLM 4.98±
PK Washer ATop Boat Spike
ON SURFACE



O.D.O.T. DISTRICT 2 SURVEY OFFICE

PERSONNEL

NOTES CROWIN
 H.C. RIPPLE
 R.C. BARBOUR
COYMAN

REFERENCE NO. _____

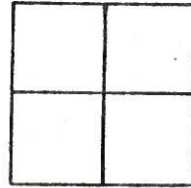
DATE 7/24/85
 WEATHER SUNNY
 TEMP. 86°

SHEET 11 OF _____

ROUTE 105
 COUNTY SANDUSKY
 TOWNSHIP WOODVILLE
 SECTION ??
 T. 6 N R. 13 E

TYPE MONUMENT P.K. WASHER ATOP BOAT SPIKE
 ON SURFACE - BELOW ON SURFACE
 LEFT- & PAW'T. - RIGHT &
 TO _____ EDGE PAVEMENT
 S.L.M. 4.98 ±

23



P.I.
262+80 ±

