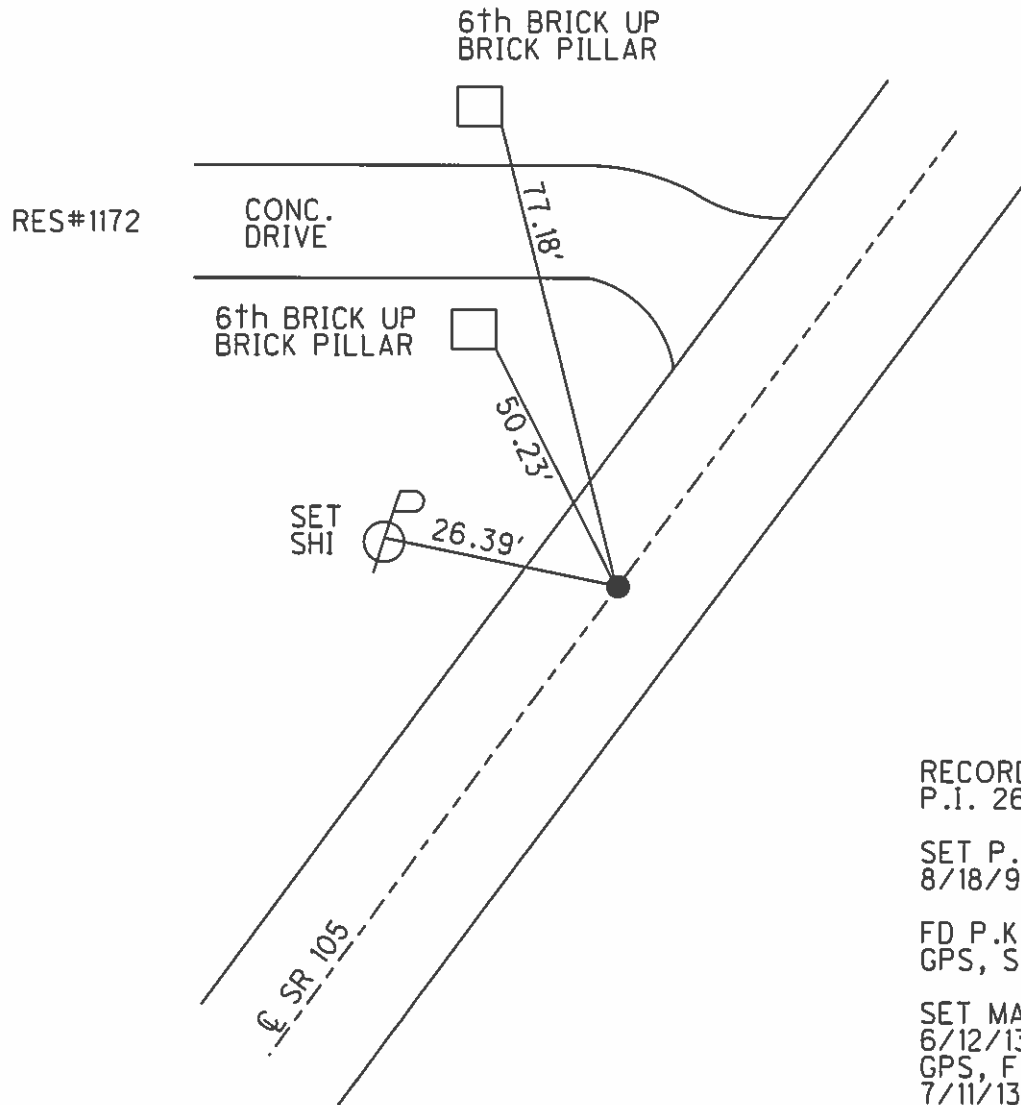
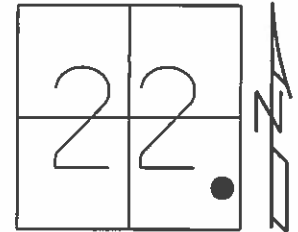


O.D.O.T. DISTRICT 2 SURVEY OFFICE (USE ONLY)

PERSONNEL _____ REFERENCE NO. 24 SHEET 9 OF 10
 NOTES HOMAN DATE 5/2/13 ROUTE SR 105
 H.C. HOMAN WEATHER SUNNY COUNTY SANDUSKY
 R.C. ROUSOS TEMP. 60° TOWNSHIP WOODVILLE
 _____ SECTION 22
 _____ T 6 N R 13 E

TYPE MONUMENT P.K./WASHER
 ON SURFACE - ~~BELOW~~ ON _____
 LEFT - Q PAV'T - RIGHT ON _____
9.5' TO RT EDGE PAVEMENT
 S.L.M. 264+83
 Grid: Northing: 654484.999 Easting: 1738586.022



RECORD:
 P.I. 264+90
 SET P.K./WASHER
 8/18/94, JLR
 FD P.K./WASHER
 GPS, SANREF24
 SET MAG/WASHER
 6/12/13, SDC
 GPS, FINREF24
 7/11/13, SDC

O.D.O.T. DISTRICT 2 SURVEY OFFICE

PERSONNEL _____

REFERENCE NO. 24

SHEET 12 OF 13

NOTES Ripple

H.C. "

R.C. Greyman

DATE 8-18-94

WEATHER Sunny

TEMP. 75°

ROUTE SR 105

COUNTY Sandusky

TOWNSHIP Woodsville

SECTION 22

T.6 N R.13 E

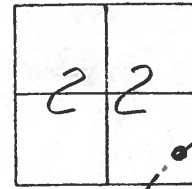
TYPE MONUMENT P.K./washer

ON SURFACE - ~~BELOW~~ yes

~~LEFT- & PAV'T. - RIGHT~~ yes

9.5 TO RT EDGE PAVEMENT

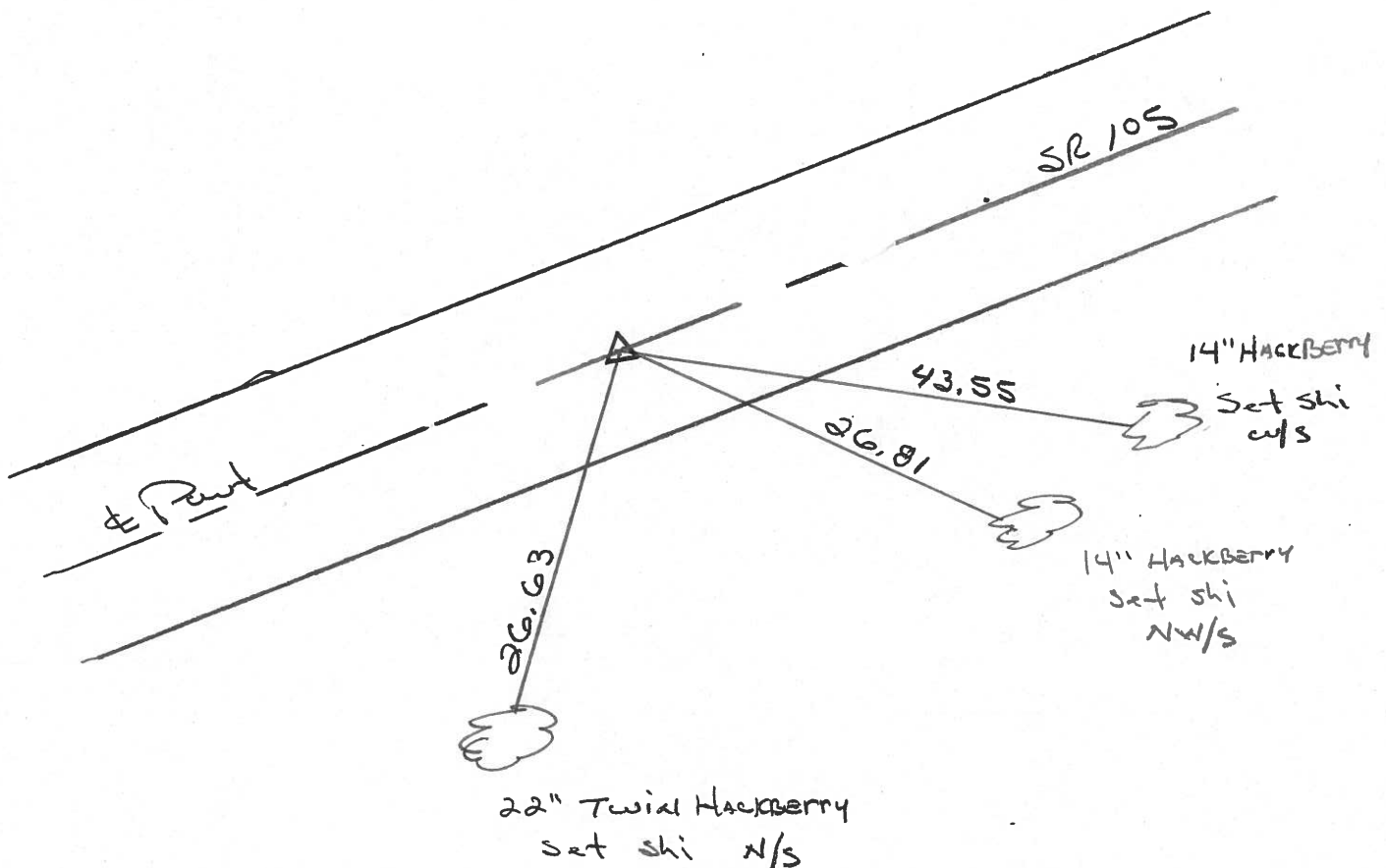
S.L.M. 264+83



RECORDS:

P.I. 264+90 ±

SET P.K./washer 8-18-94 J.R.



O.D.O.T. DISTRICT 2 SURVEY OFFICE

PERSONNEL

NOTES CROWIN
H.C. RIPPLE
R.C. BARBOUR
GEYMAN

REFERENCE NO. _____

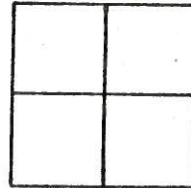
SHEET 12 OF _____

DATE 7/27/85
WEATHER SUNNY
TEMP. 86

ROUTE 105
COUNTY SANDUSKY
TOWNSHIP WOODVILLE
SECTION ??
T 6 N R 13 E

TYPE MONUMENT P.K. WASHER AT OP BOAT SPIKE
ON SURFACE - BELOW ON SURFACE
LEFT - ☉ PAV'T. - RIGHT ☉
TO _____ EDGE PAVEMENT
S.L.M. 5.02 ±

24



P.I.

264+90 ±

