

O.D.O.T. DISTRICT 2 SURVEY OFFICE (USE ONLY)

PERSONNEL

REFERENCE NO. 25

SHEET 10 OF 10

NOTES HOMAN

DATE 5/2/13

ROUTE SR 105

H.C. HOMAN

WEATHER SUNNY

COUNTY SANDUSKY

R.C. ROUSOS

TEMP. 60°

TOWNSHIP WOODVILLE

SECTION 22

T 6 N R 13 E

TYPE MONUMENT P.K./WASHER

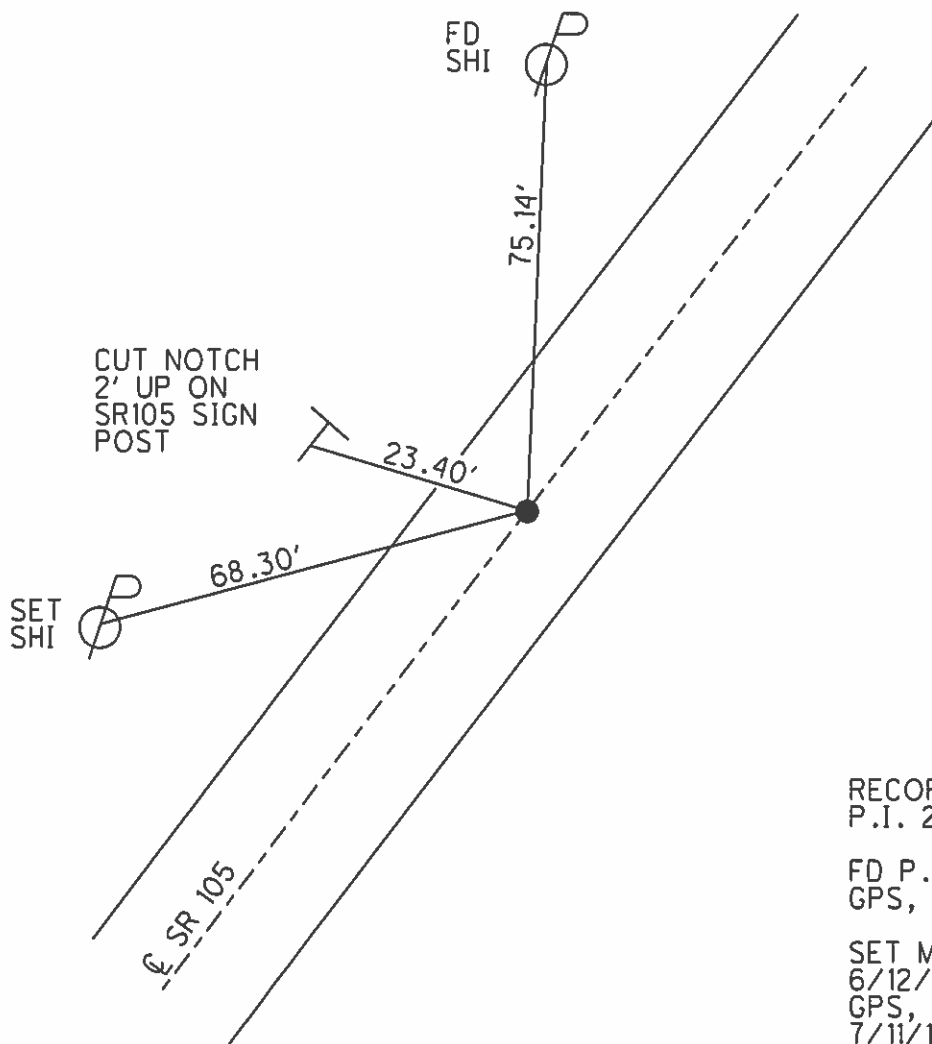
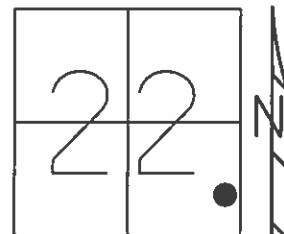
ON SURFACE - ~~BELOW~~ ON

LEFT - Q PAV'T - ~~RIGHT~~ 1.5'

7.7' TO LT EDGE PAVEMENT

S.L.M. 266+60

Grid: Northing: 654633.141 Easting: 1738750.927



RECORD: 1985
P.I. 266+60

FD P.K./WASHER
GPS, SANREF25

SET MAG/WASHER
6/12/13, SDC
GPS, FINREF25
7/11/13, SDC

O.D.O.T. DISTRICT 2 SURVEY OFFICE

PERSONNEL _____

REFERENCE NO. 25

SHEET 13 OF 13

NOTES Ripple

H.C. "

R.C. Goyman

DATE 8-18-94

WEATHER Sunny

TEMP. 75°

ROUTE SR 105

COUNTY SANDUSKY

TOWNSHIP Woodville

SECTION 22

T. 6 N. R. 13 E

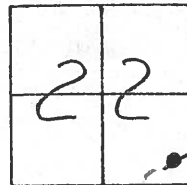
TYPE MONUMENT P.I. / washer

~~ON SURFACE~~ - BELOW 1 1/2"

LEFT - ~~C. PAV'T.~~ - RIGHT 2.5

7.7 TO LT. EDGE PAVEMENT

S.L.M. 5.05 ± (Record)

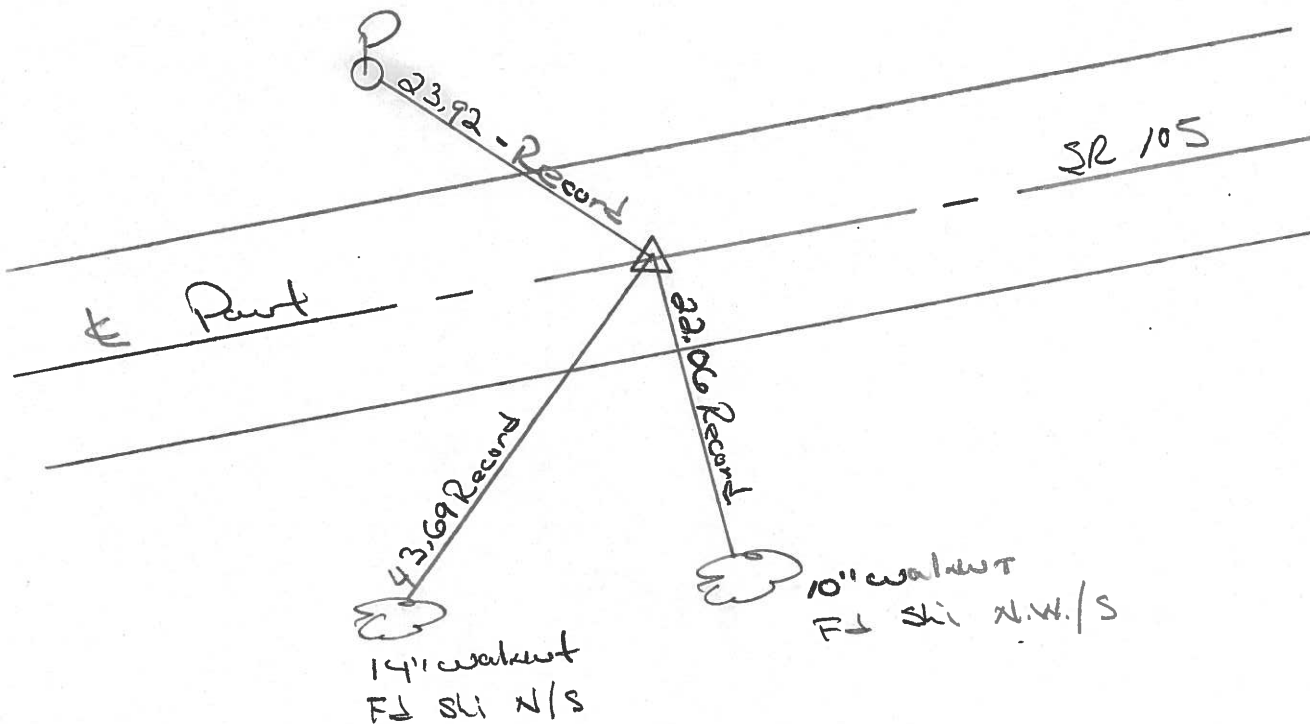


Record: (1985)

P.I. 286+60 ±

Record Note: 8-9-94

Covered by New
Asphalt Before we
could Re-tie
R. chimney



O.D.O.T. DISTRICT 2 SURVEY OFFICE

PERSONNEL

NOTES CROWIN
H.C. RIPPLE
R.C. BARBOUR
GEYMAN

REFERENCE NO. _____

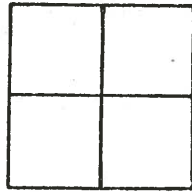
DATE 7/27/85
WEATHER SUNNY
TEMP. 86°

SHEET 13 OF _____

ROUTE 105
COUNTY SANDUSKY
TOWNSHIP WOODVILLE
SECTION ??
T 6 N R 13 E

TYPE MONUMENT P.K. WASHER ATOP BOAT SPIKE
ON SURFACE - BELOW TOP N.E.S. - ON SURFACE
LEFT - & PAW'T. - RIGHT 2.5 FT. & PAINT
TO _____ EDGE PAVEMENT
S.L.M. 5.05 E

(25)



P.I.
266+60 E

