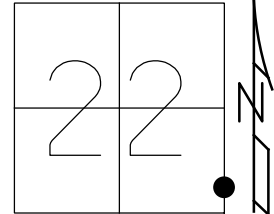


O.D.O.T. DISTRICT 2 SURVEY OFFICE (USE ONLY)

PERSONNEL _____ REFERENCE NO. 26 SHEET 11 OF 11
 NOTES HOMAN DATE 5/2/13 ROUTE SR 105
 H.C. HOMAN WEATHER CLEAR COUNTY SANDUSKY
 R.C. ROUSOS TEMP. 60° TOWNSHIP WOODVILLE
 _____ SECTION 22
 _____ T 6 N R 13 E

TYPE MONUMENT P.K./WASHER
 ON SURFACE - ~~BELOW~~ ON
 LEFT - Q PAV'T - RIGHT ON
10.3' TO RT EDGE PAVEMENT
 S.L.M. 267+71



GRID: NORTHING: 654700.739 EASTING: 1738750.927

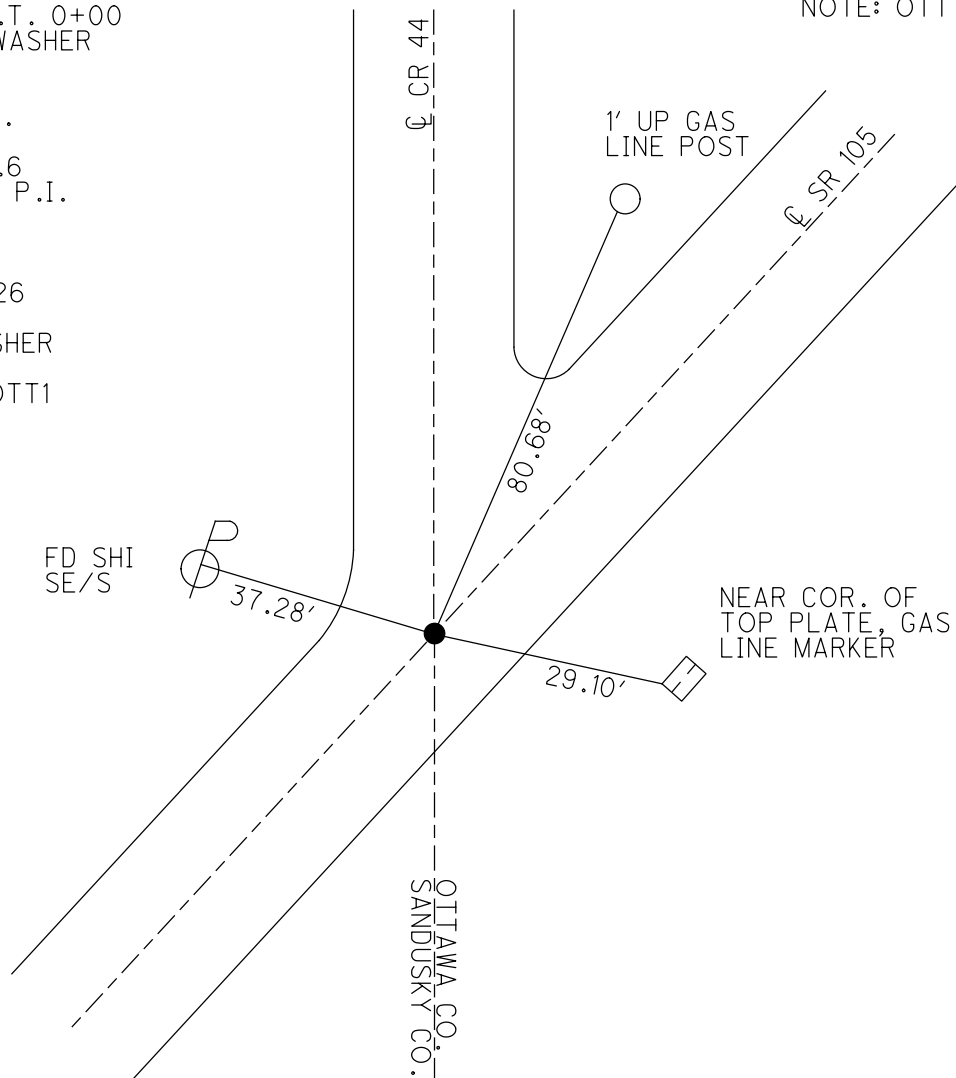
RECORD: P.O.T. 0+00
 RESET P.K./WASHER
 9/14/94, MB

SANDUSKY CO.
 REF 26
 STA. 267+69.6
 RECORD 1985: P.I.
 STA. 267+71

FD P.K.
 GPS, SANREF26

SET MAG/WASHER
 6/12/13, SDC
 GPS, FINREFOTT1
 7/11/13, SDC

NOTE: OTT REF 1



O.D.O.T. DISTRICT 2 SURVEY OFFICE

PERSONNEL _____

REFERENCE NO. 1 ^{OTTAWA COUNTY} SHEET 1 OF _____
26 ^{SANDUSKY COUNTY}

NOTES Barnhise 1

H.C. PRUNTY

R.C. SLOVAK

DATE 9-14-94

WEATHER CLEAR

TEMP. +85°

ROUTE 105

COUNTY OTTAWA

TOWNSHIP HARRIS

SECTION 23

T6 NR 13 E

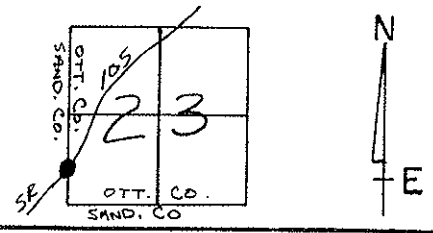
TYPE MONUMENT PK/Washer

~~ON SURFACE~~ - BELOW 1/2

~~SET - C PAV'T. - RIGHT~~ yes

10.3 TO RT EDGE PAVEMENT

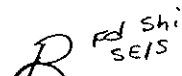
S.L.M. 0+00



Record : P.O.T. 0+00

Reset PK & Washer
 9-14-94
 MB.

SANDUSKY COUNTY
 Sta. = 267+69.60
 Record 1985:
 P.I.
 Sta 267+71.1



39.12

E PAU'T SAND. Co. Rd # 44

80.65

GAS LINE POST
 1' UP

S.R. 105

48.84

OTTAWA Co.
 SANDUSKY Co.

29.03

NEAR CORNER OF
 TOP PLATE
 OF GAS LINE MARKER



E PAU'T

O.D.O.T. DISTRICT 2 SURVEY OFFICE

PERSONNEL

NOTES CRONIN
 H.C. RIPPLE
 R.C. BARBOUR
GEYMAN

REFERENCE NO. _____

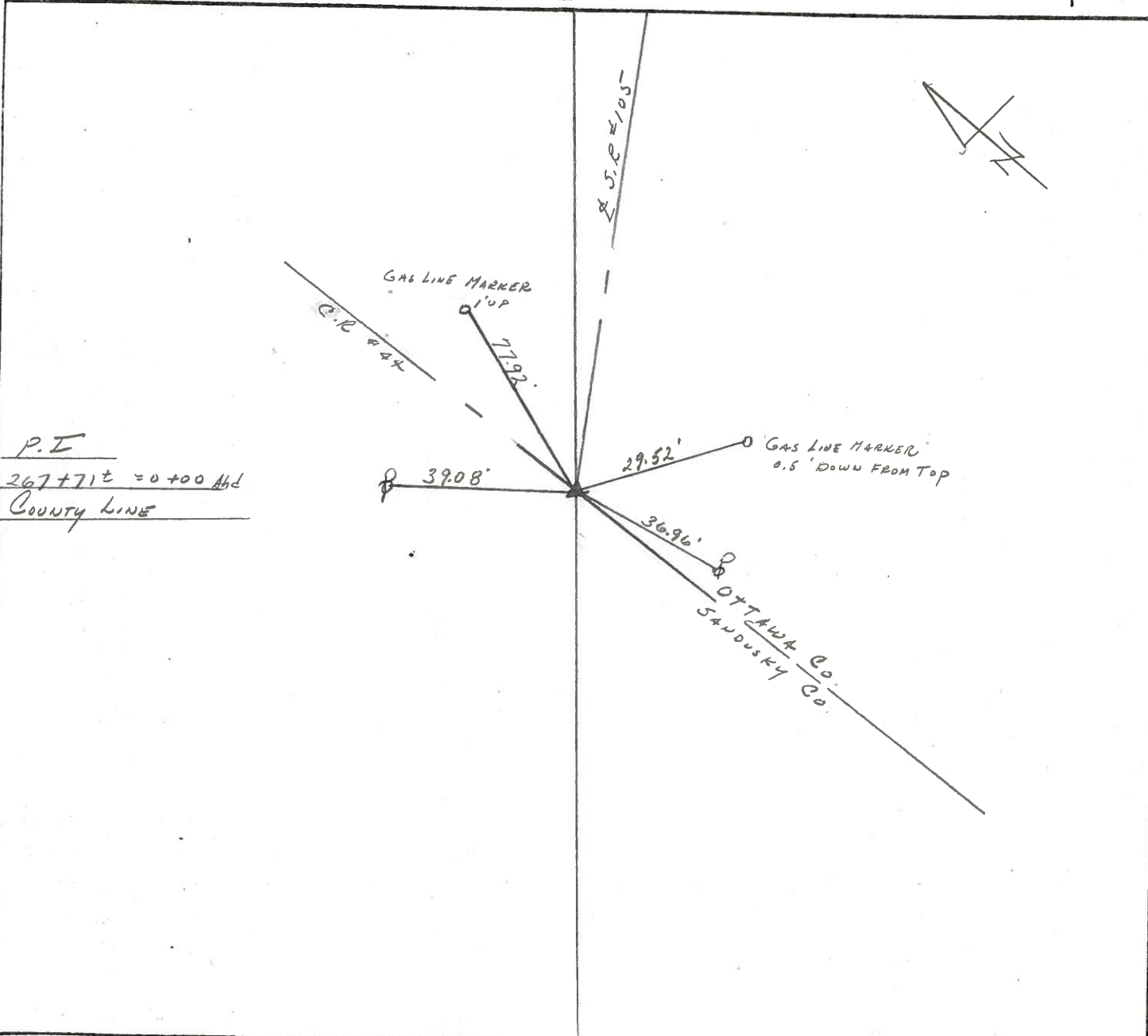
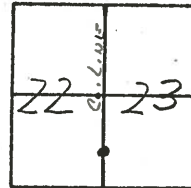
DATE 7/24/85
 WEATHER SUNNY
 TEMP. 86°

SHEET 14 OF _____

ROUTE 105
 COUNTY SANDUSKY
 TOWNSHIP WOODVILLE
 SECTION 22 & 23
 T. 6 N R. 13 E

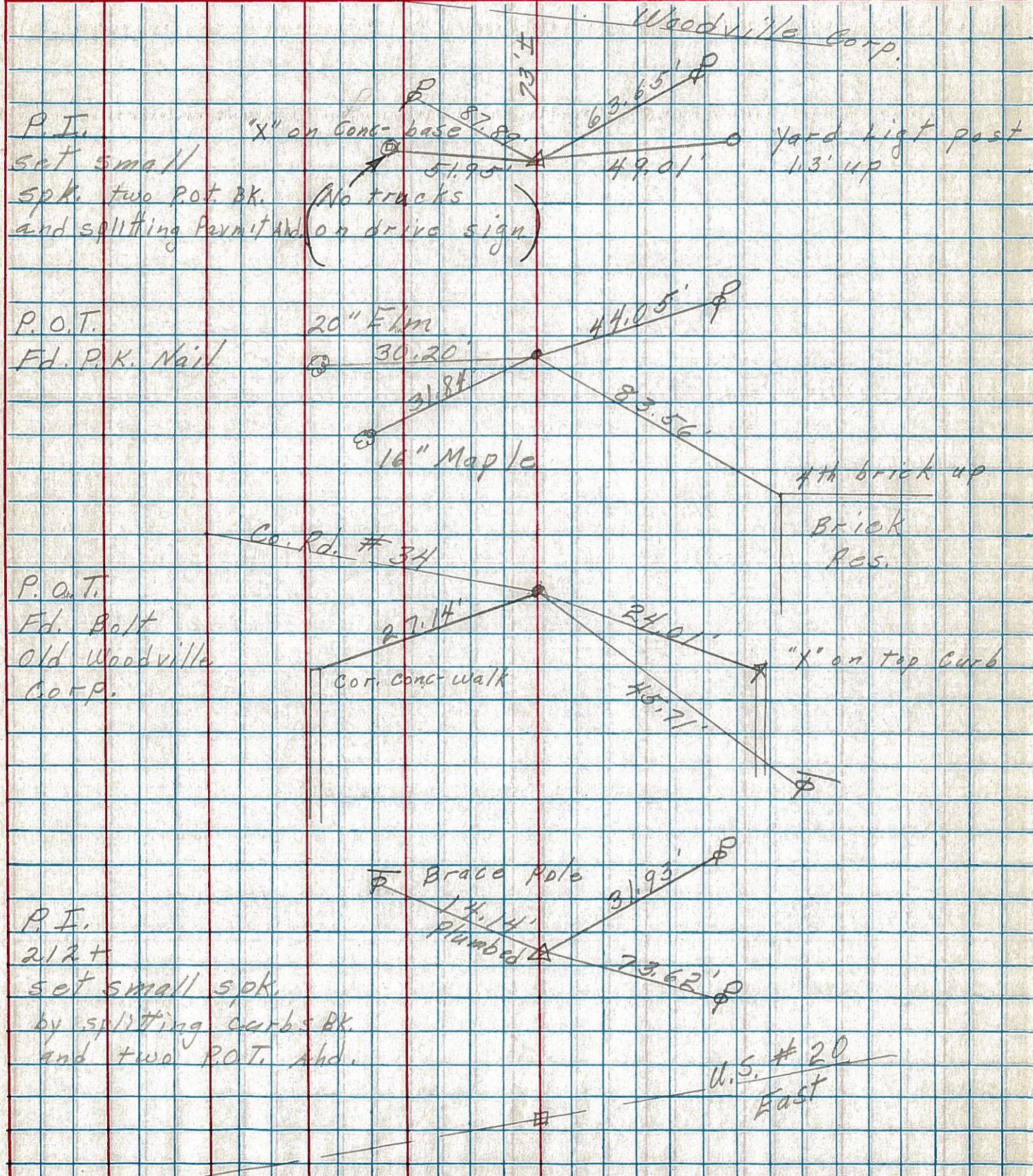
TYPE MONUMENT P.K. WASHER AT P.R. SPIKE
 ON SURFACE - BELOW ON SURFACE
 LEFT - CL PAW'T. - RIGHT 1.0' LT. & PAUMT
 TO EDGE PAVEMENT
 S.L.M. 5.07 E

26



PERSONNEL	TITLE	PERSONNEL	TITLE	COUNTY	DATE	WEATHER	TEMP.
Schneider		Ash		Sandusky	7-30-74	Sunny	75°
Mosser		Ripple		S. R. 105			
Barbour		Geyman		SEC. Woodville			

DESCRIPTION Woodville Twp. JOB NO. _____



P.I. "x" on Conc. base
 set small
 spk. two P.O.T. BK.
 and splitting permit and on drive sign

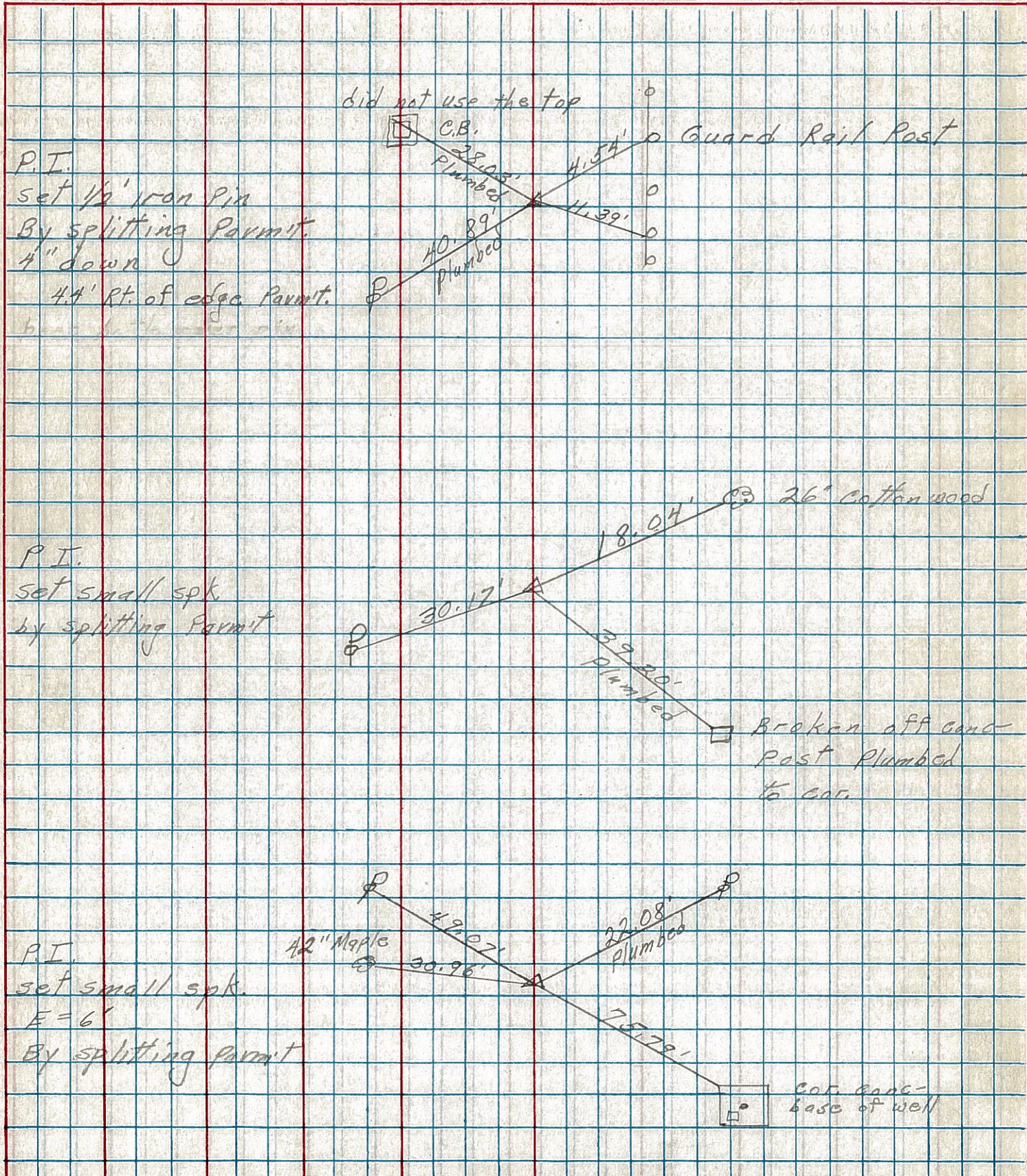
P.O.T.
 Fd. P.K. Nail

P.O.T.
 Fd. Bolt
 Old Woodville
 Corp.

P.I.
 2 1/2"
 set small spk.
 by splitting curbs BK.
 and two P.O.T. Ahd.

PERSONNEL	TITLE	PERSONNEL	TITLE	COUNTY	DATE	WEATHER	TEMP.
Schneider		Ash		Sandusky	8-1-74	Sunny	80°
Mosser		Cromia		S. R. 105			
Barbour		Ripple		SEC. 27			
		Geyman					

DESCRIPTION Woodville Twp. JOB NO. _____



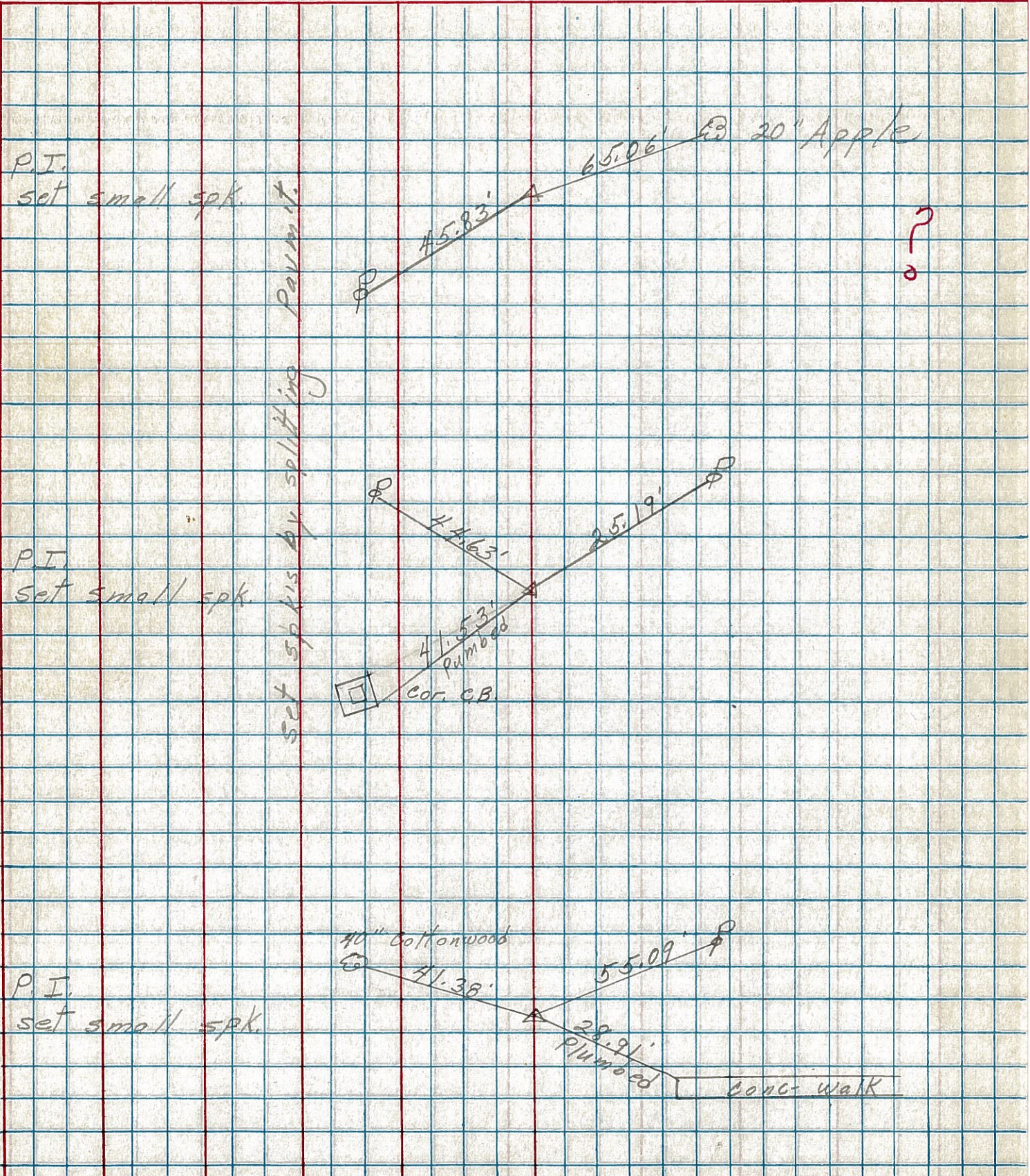
PERSONNEL TITLE PERSONNEL TITLE

COUNTY Sandusky DATE 8-1-74

S. R. 105 WEATHER Sunny

SEC. 27 TEMP. 85°

DESCRIPTION Woodville Twp. JOB NO.



PERSONNEL TITLE PERSONNEL TITLE

COUNTY Sandusky DATE 8-1-74

S. R. 105 WEATHER Sunny

SEC. 27 TEMP. 85°

DESCRIPTION Woodville Twp. JOB NO.

