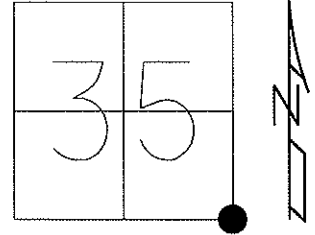


O.D.O.T. DISTRICT 2 SURVEY OFFICE (USE ONLY)

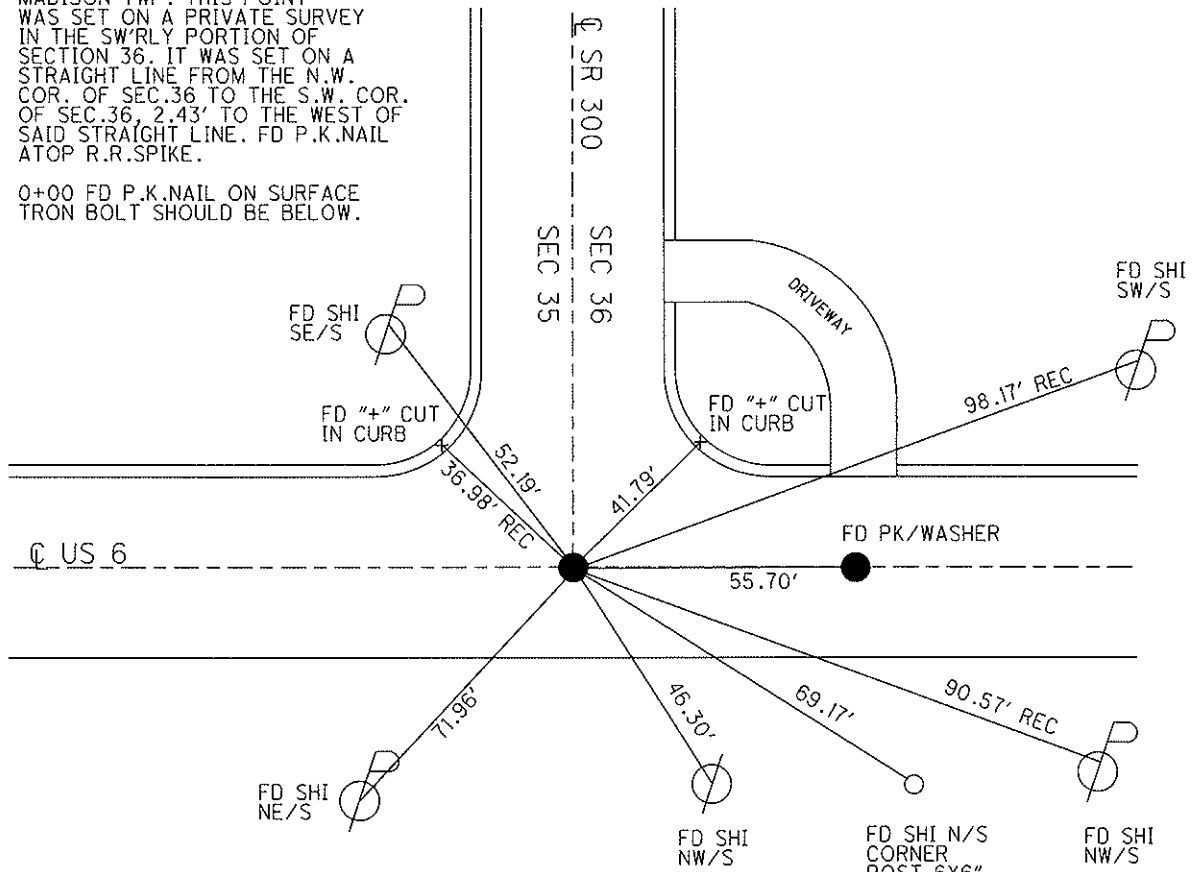
PERSONNEL _____ REFERENCE NO. 1 SHEET 1 OF 22
 NOTES HOMAN DATE 8/12/09 ROUTE SR 300
 H.C. HOMAN WEATHER CLOUDY COUNTY SANDUSKY
 R.C. ROUSOS TEMP. 75° TOWNSHIP MADISON
 SECTION 35
 T 5 N R 13 E

TYPE MONUMENT SM.R.R.SPIKE
 ON SURFACE - ~~BELOW~~ ON
~~LEFT~~ - ℄ PAV'T - RIGHT 1.0', (US 6=ON)
12.2' TO RT EDGE PAVEMENT
 S.L.M. 0+00, (US 6= 265+66 REC)
 Grid: Northing: _____ Easting: _____



NOTE: 11/5/73
 MADISON TWP. THIS POINT
 WAS SET ON A PRIVATE SURVEY
 IN THE SW'RLY PORTION OF
 SECTION 36. IT WAS SET ON A
 STRAIGHT LINE FROM THE N.W.
 COR. OF SEC.36 TO THE S.W. COR.
 OF SEC.36, 2.43' TO THE WEST OF
 SAID STRAIGHT LINE. FD P.K.NAIL
 ATOP R.R.SPIKE.

0+00 FD P.K.NAIL ON SURFACE
 TRON BOLT SHOULD BE BELOW.



FD P.K./WASHER
 4/16/93 MB

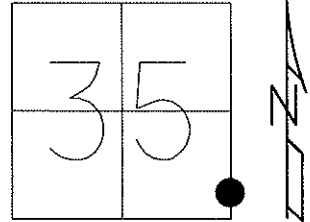
RESET SM.R.R.SPIKE
 5/7/93 MB

FD SM.R.R.SPIKE
 5/10/00, MAINTENANCE

O.D.O.T. DISTRICT 2 SURVEY OFFICE (USE ONLY)

PERSONNEL	REFERENCE NO. <u>1 A</u>	SHEET <u>2</u> OF <u>22</u>
NOTES <u>RHOADES</u>	DATE <u>4/16/13</u>	ROUTE <u>SR 300</u>
H.C. <u>CODER</u>	WEATHER <u>RAIN</u>	COUNTY <u>SANDUSKY</u>
R.C. <u>RHOADES</u>	TEMP. <u>51°</u>	TOWNSHIP <u>MADISON</u>
		SECTION <u>35</u>
		T <u>5</u> N R <u>13</u> E

TYPE MONUMENT P.K./WASHER
 ON SURFACE - ~~BELOW~~ ON
 LEFT - ~~C PAV'T~~ = RIGHT 5.5'
4.2' TO LT EDGE PAVEMENT
 S.L.M. 13+21



Grid: Northing: 612406.556 Easting: 1743122.051

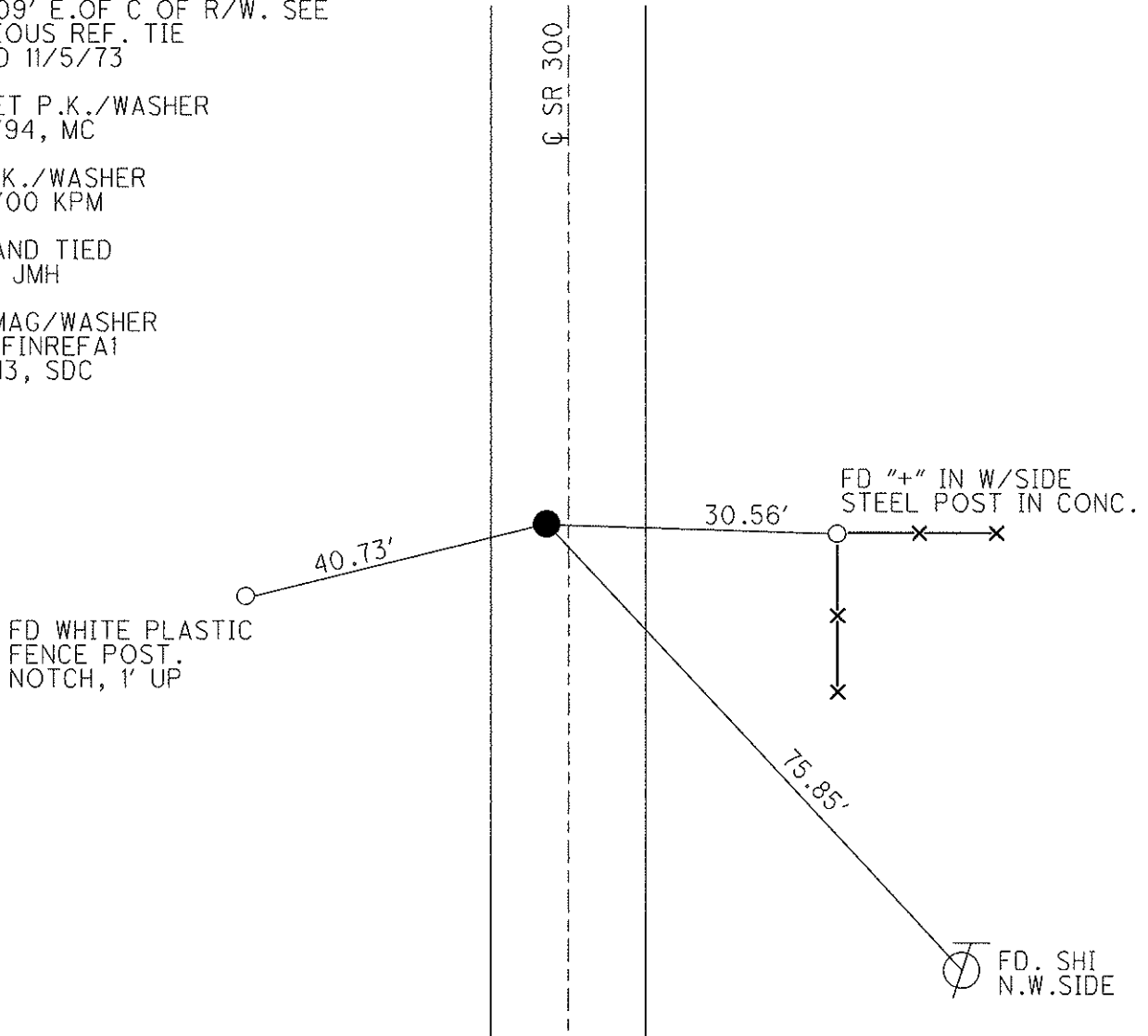
NOTE: POINT IS BELIEVED TO BE 1.09' E. OF C. OF R/W. SEE PREVIOUS REF. TIE DATED 11/5/73

RE-SET P.K./WASHER
9/16/94, MC

FD P.K./WASHER
5/10/00 KPM

GPS AND TIED
1-7-11 JMH

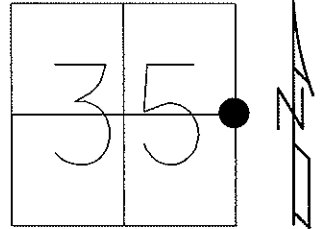
SET MAG/WASHER
GPS, FINREFA1
6/3/13, SDC



O.D.O.T. DISTRICT 2 SURVEY OFFICE (USE ONLY)

PERSONNEL _____ REFERENCE NO. 2 SHEET 3 OF 22
 NOTES RHOADES DATE 4/16/13 ROUTE SR 300
 H.C. CODER WEATHER RAIN COUNTY SANDUSKY
 R.C. RHOADES TEMP. 51° TOWNSHIP MADISON
 _____ SECTION 35
 _____ T 5 N R 13 E

TYPE MONUMENT P.K./WASHER
 ON SURFACE - ~~BELOW~~ ON _____
 LEFT - ~~C PAV'T~~ = RIGHT 7.5'
2.5' TO LT EDGE PAVEMENT
 S.L.M. 26+41



Grid: Northing: 613724.450 Easting: 1743126.853

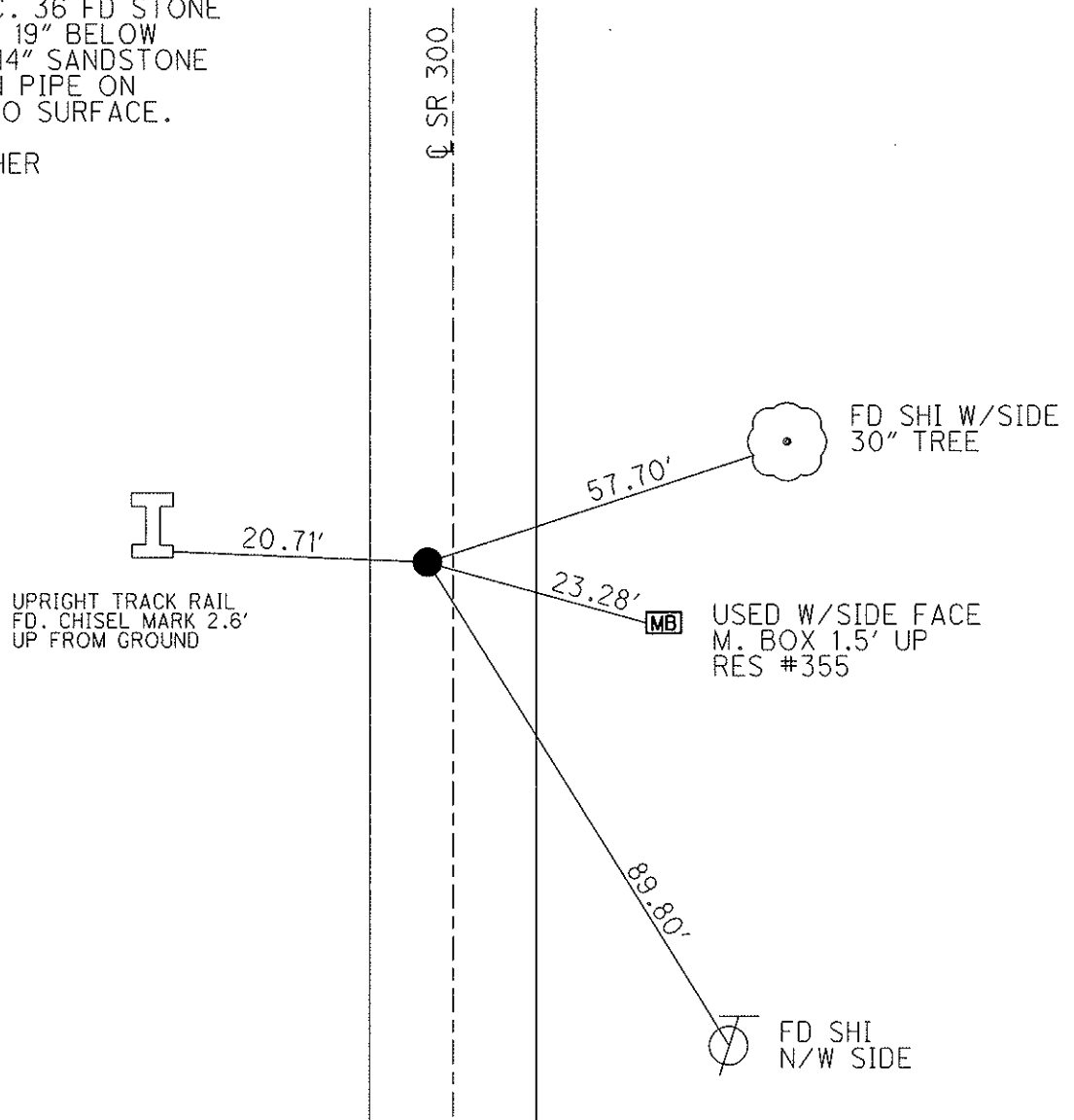
RECORD: 7/27/73
 WEST-1 POST SEC. 36 FD STONE
 WITH DRILL HOLE 19" BELOW
 SURFACE. 10X10X14" SANDSTONE
 SET 1" X 18" IRON PIPE ON
 TOP OF STONE TO SURFACE.

RESET P.K./WASHER
 9/16/94, MC

FD P.K./WASHER
 5/10/00 KPM

GPS & TIED
 1-7-11 JMH

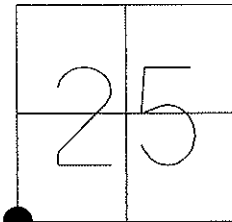
SET MAG/WASHER
 GPS, FINREF2
 6/6/13, SDC



O.D.O.T. DISTRICT 2 SURVEY OFFICE (USE ONLY)

PERSONNEL _____ REFERENCE NO. 3 SHEET 4 OF 22
 NOTES RHOADES DATE 4/16/13 ROUTE SR 300
 H.C. CODER WEATHER RAIN COUNTY SANDUSKY
 R.C. RHOADES TEMP. 51° TOWNSHIP MADISON
 _____ SECTION 25
 _____ T 5 N R 13 E

TYPE MONUMENT P.K./WASHER
 ON SURFACE - ~~BELOW~~ ON
~~LEFT~~ - Q PAV'T - ~~RIGHT~~ ON
- TO - EDGE PAVEMENT
 S.L.M. 52+93 1.0' SOUTH OF Q T.R.55
 Grid: Northing: 616370.533 Easting: 1743143.846

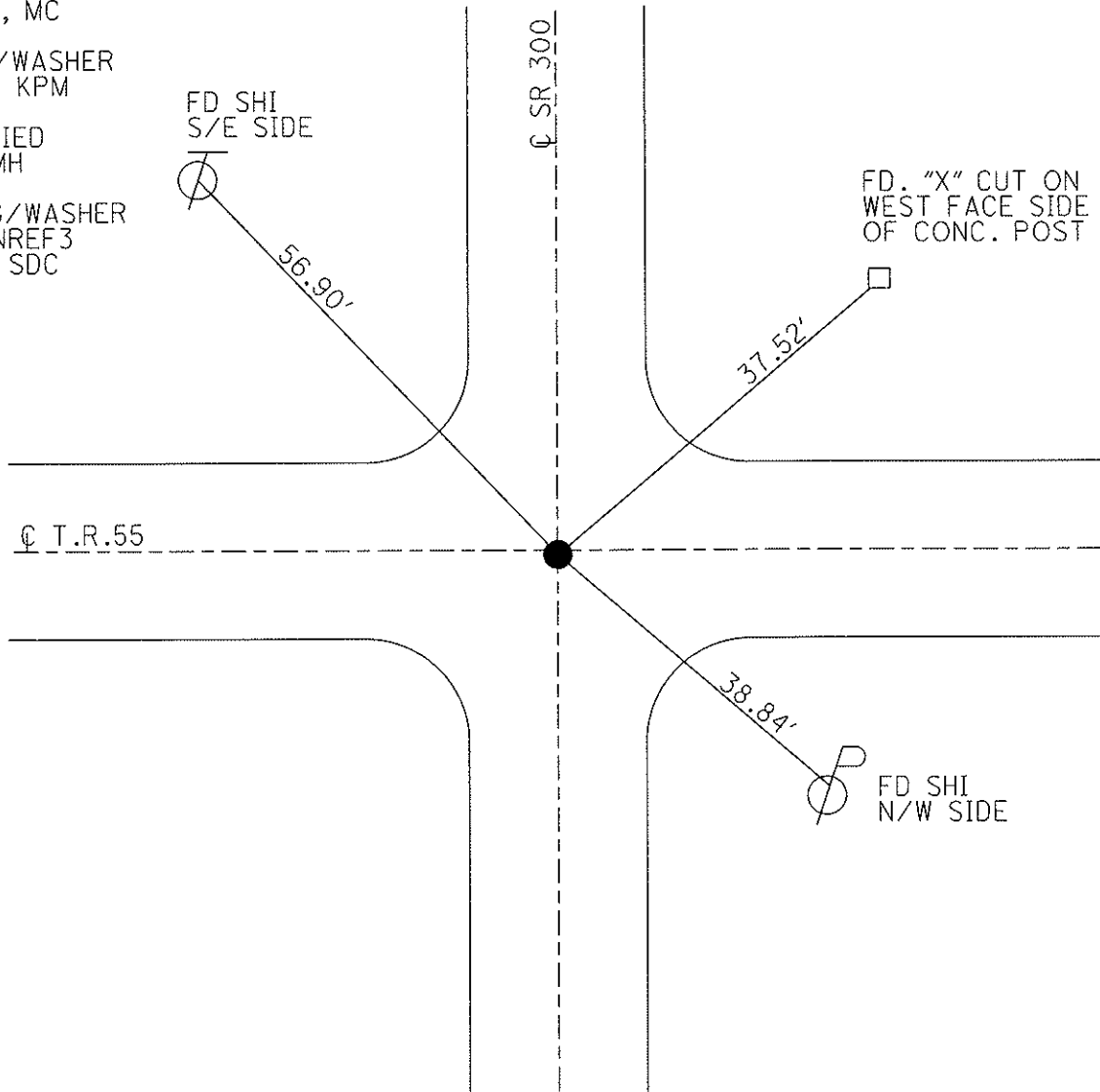


RESET P.K./WASHER
 9/16/94, MC

FD P.K./WASHER
 5/10/00 KPM

GPS & TIED
 1-7-11 JMH

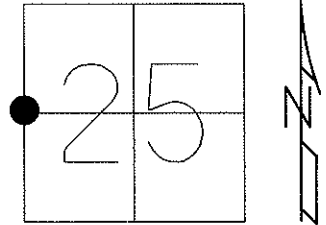
SET MAG/WASHER
 GPS, FINREF3
 6/3/13, SDC



O.D.O.T. DISTRICT 2 SURVEY OFFICE (USE ONLY)

PERSONNEL _____ REFERENCE NO. 4 SHEET 5 OF 22
 NOTES RHOADES DATE 4/16/13 ROUTE SR 300
 H.C. CODER WEATHER RAIN COUNTY SANDUSKY
 R.C. RHOADES TEMP. 51° TOWNSHIP MADISON
 _____ SECTION 25
 _____ T 5 N R 13 E

TYPE MONUMENT P.K./WASHER
 ON SURFACE - ~~BELOW~~ ON
~~LEFT - C PAV'T~~ - RIGHT 3.1'
7.3' TO RT EDGE PAVEMENT
 S.L.M. 79+35



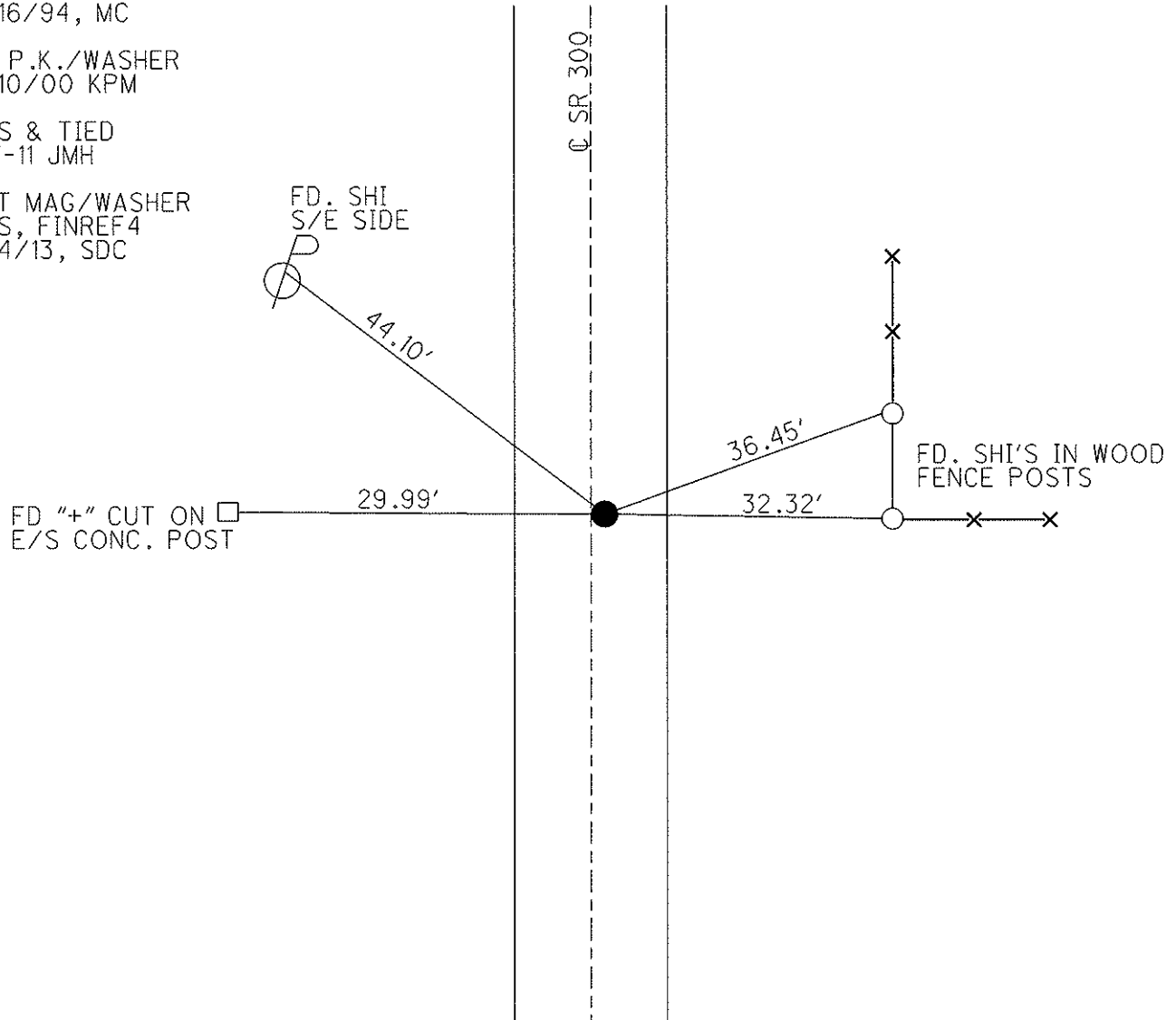
Grid: Northing: 619005.703 Easting: 1743196.328

RESET P.K./WASHER
 9/16/94, MC

FD P.K./WASHER
 5/10/00 KPM

GPS & TIED
 1-7-11 JMH

SET MAG/WASHER
 GPS, FINREF4
 6/4/13, SDC



O.D.O.T. DISTRICT 2 SURVEY OFFICE (USE ONLY)

PERSONNEL

REFERENCE NO. 5

SHEET 6 OF 22

NOTES RHOADES

DATE 4/16/13

ROUTE SR 300

H.C. CODER

WEATHER RAIN

COUNTY SANDUSKY

R.C. RHOADES

TEMP. 51°

TOWNSHIP MADISON

SECTION 25

T 5 N R 13 E

TYPE MONUMENT PK/WASHER

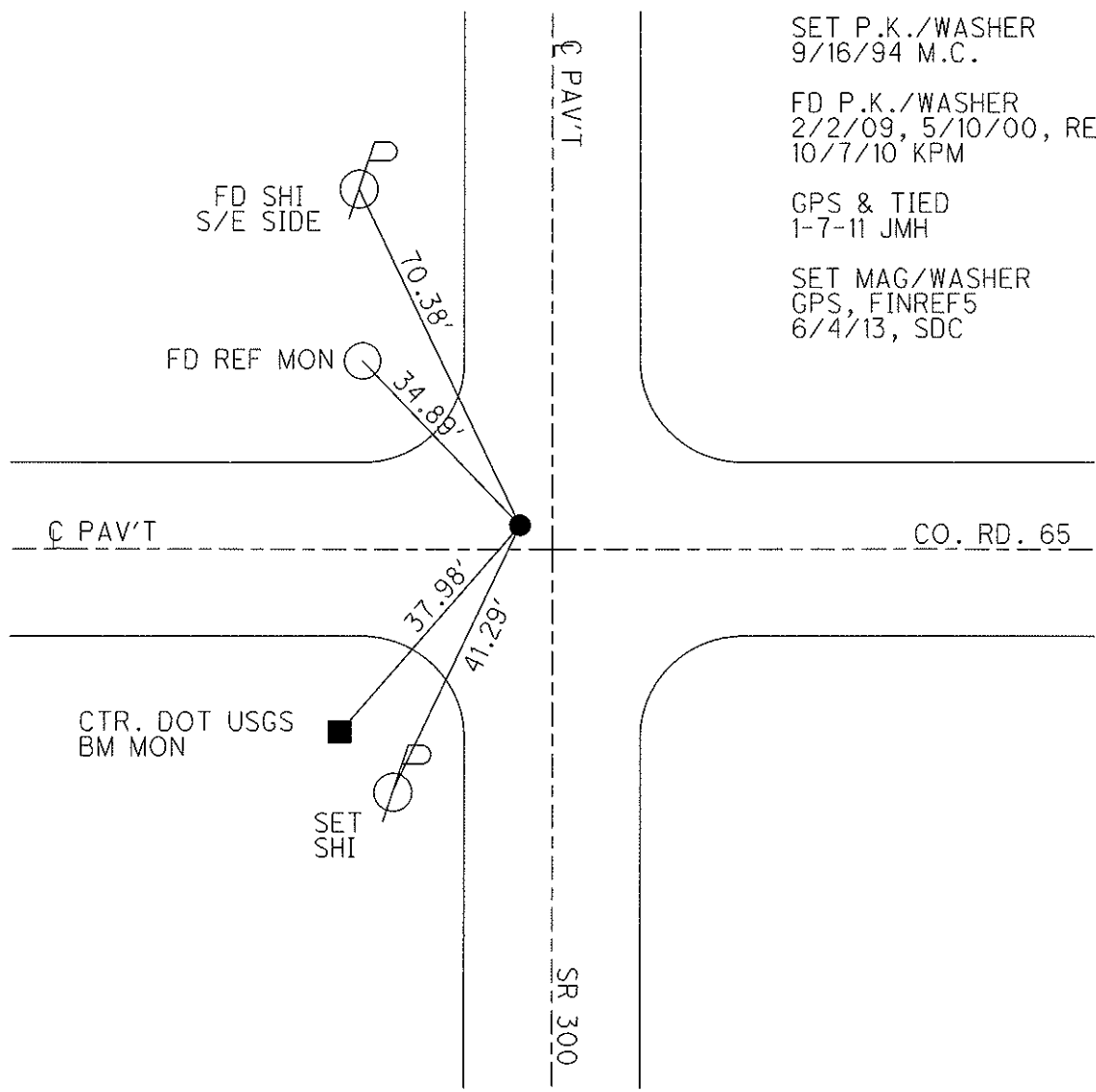
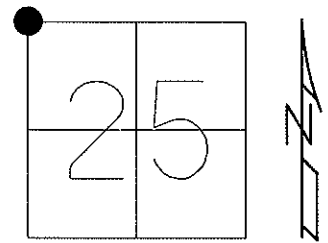
ON SURFACE - ~~BELOW~~ ON

LEFT - ~~Q PAV'T~~ - RIGHT 2.4'

 TO EDGE PAVEMENT

S.L.M. 106+07.24

Grid: Northing: 621645.757 Easting: 1743248.120



O.D.O.T. DISTRICT 2 SURVEY OFFICE (USE ONLY)

PERSONNEL _____

REFERENCE NO. 5 A

SHEET 7 OF 22

NOTES RHOADES

DATE 4/16/13

ROUTE SR 300

H.C. CODER

WEATHER RAIN

COUNTY SANDUSKY

R.C. RHOADES

TEMP. 51°

TOWNSHIP MADISON

SECTION 23

T 5 N R 13 E

TYPE MONUMENT FD P.K./WASHER

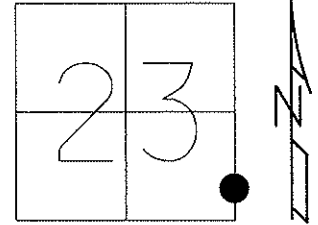
~~ON SURFACE~~ - BELOW 2.5"

~~LEFT - C~~ PAV'T - ~~RIGHT~~ ON

10.2 TO LT EDGE PAVEMENT

S.L.M. 115+41

Grid: Northing: 622603.748 Easting: 1743290.752

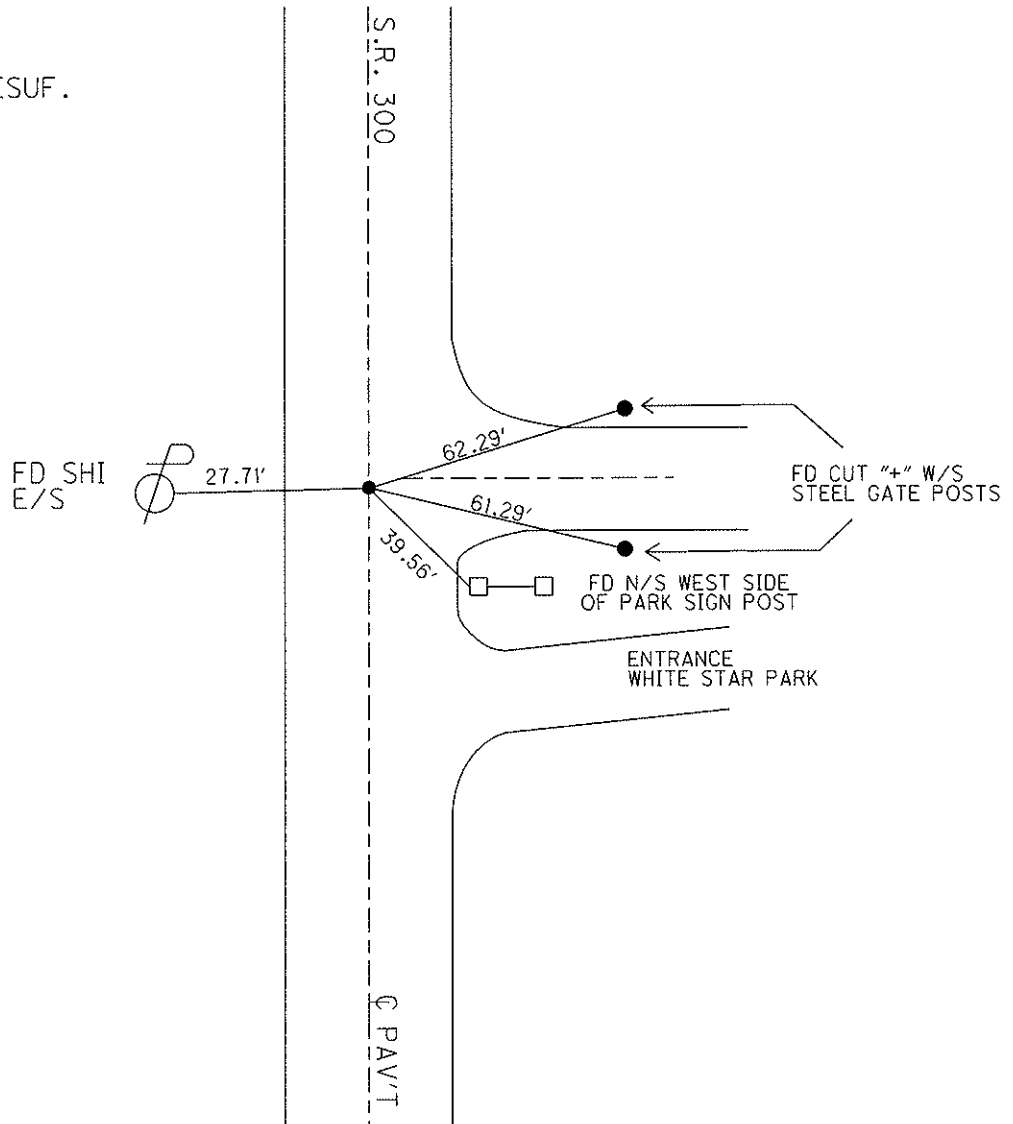


SET NAIL/SHI
9/16/94 M.C.

FD P.K./WASHER
2/3/09, 5/10/00, RESUF.
10/7/10 KPM

GPS & TIED
3/2/11 KPM

SET MAG/WASHER
GPS, FINREFA5
6/4/13, SDC

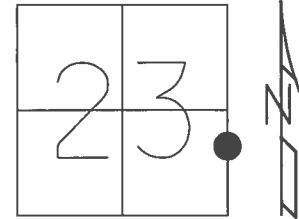


O.D.O.T. DISTRICT 2 SURVEY OFFICE (USE ONLY)

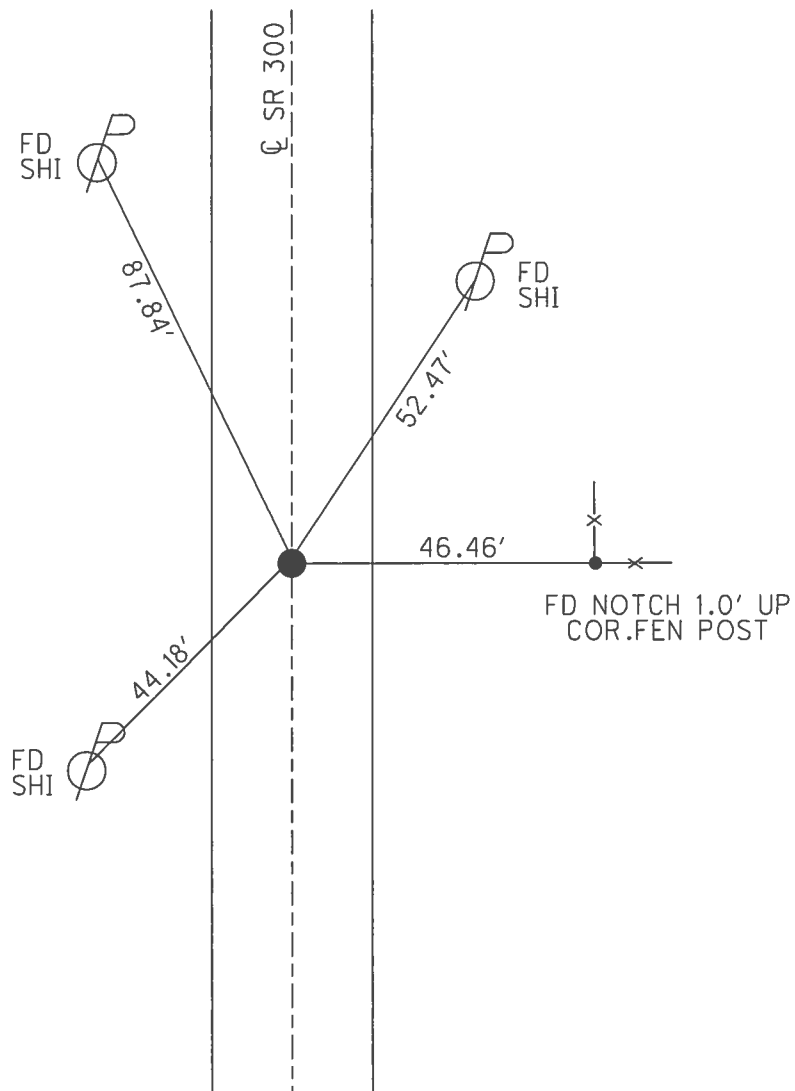
PERSONNEL _____ REFERENCE NO. 5 B SHEET 8 OF 22

NOTES RHOADES _____ DATE 7/20/17 ROUTE SR 300
 H.C. O'DONNELL _____ WEATHER SUNNY COUNTY SANDUSKY
 R.C. POORE _____ TEMP. 78° TOWNSHIP MADISON
 _____ SECTION 23
 _____ T 5 N R 13 E

TYPE MONUMENT MAG/WASHER
 ON SURFACE - ~~BELOW~~ ON _____
 LEFT - ☉ PAV'T - ~~RIGHT~~ 0.6'
10.3 TO RT EDGE PAVEMENT
 S.L.M. 124+84.10
 GRID: NORTHING: 623520.572 EASTING: 1743331.545



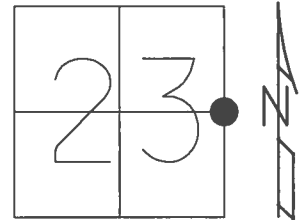
RECORD:
 SET P.K.NAIL
 9/16/94, M.C.
 FD P.K.NAIL
 5/10/00, 2/2/09
 FD P.K.NAIL
 5/19/10 KPM
 SET MAG/WASHER
 10/07/10 KPM
 FD MAG/WASHER
 REFB5
 7/20/17, JFO
 UNCOVERED
 11/15/17, JFO



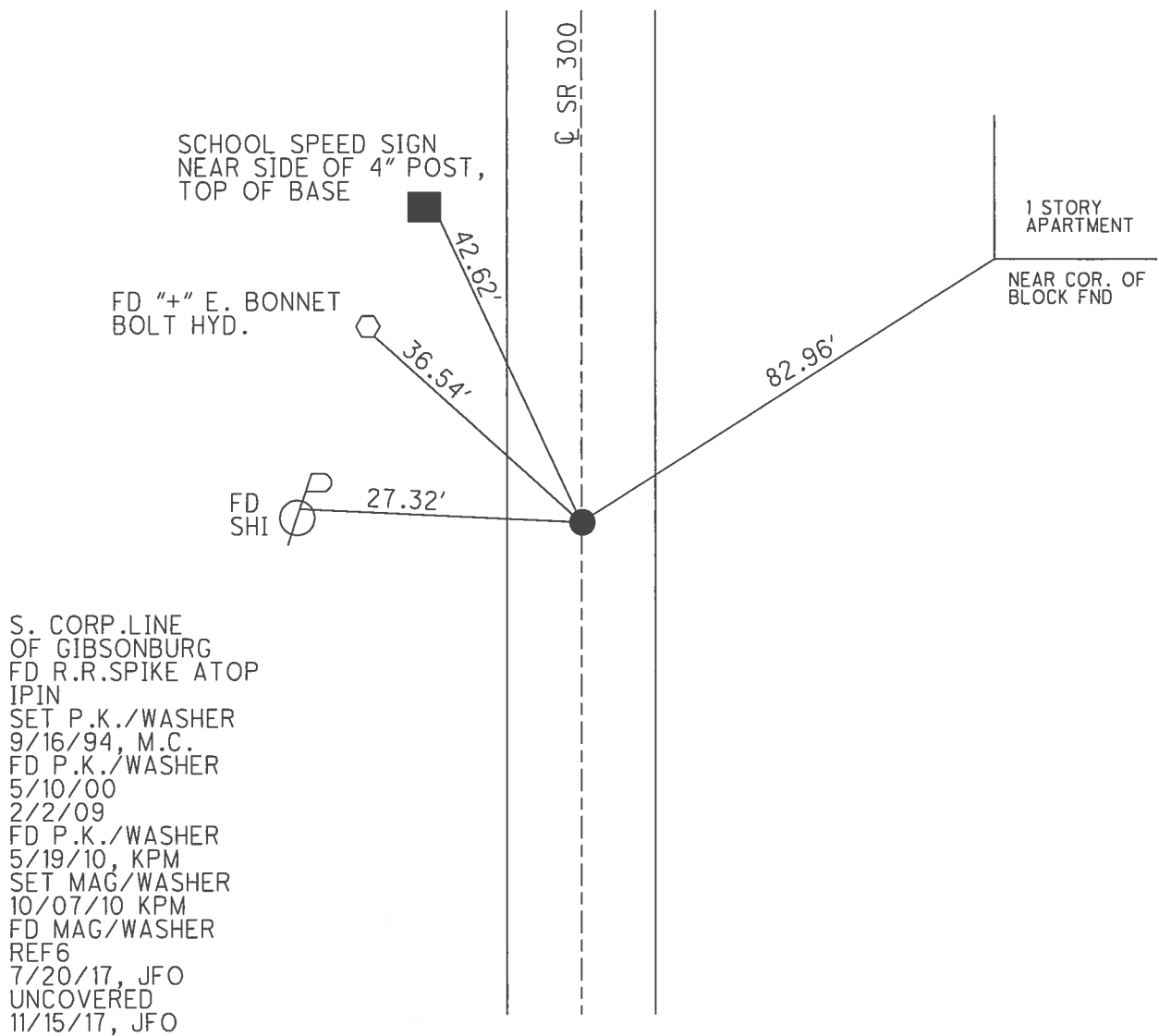
O.D.O.T. DISTRICT 2 SURVEY OFFICE (USE ONLY)

PERSONNEL _____ REFERENCE NO. 6 SHEET 9 OF 22
 NOTES RHOADES DATE 7/20/17 ROUTE SR 300
 H.C. O'DONNELL WEATHER SUNNY COUNTY SANDUSKY
 R.C. POORE TEMP. 78° TOWNSHIP MADISON
 _____ SECTION 23
 _____ T 5 N R 13 E

TYPE MONUMENT MAG/WASHER
 ON SURFACE - ~~BELOW~~ ON
 LEFT - ☉ PAV'T - RIGHT ON
10.2 TO LT EDGE PAVEMENT
 S.L.M. 132+46.87



GRID: NORTHING: 624282.715 EASTING: 1743365.473

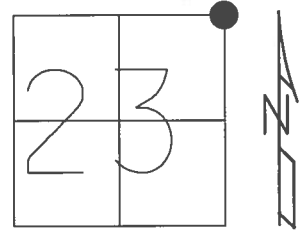


O.D.O.T. DISTRICT 2 SURVEY OFFICE (USE ONLY)

PERSONNEL _____ REFERENCE NO. 7 SHEET 10 OF 22

NOTES RHOADES _____ DATE 7/20/17 _____ ROUTE SR 300
 H.C. O'DONNELL _____ WEATHER SUNNY _____ COUNTY SANDUSKY
 R.C. POORE _____ TEMP. 78° _____ TOWNSHIP MADISON
 _____ SECTION 23
 _____ T 5 N R 13 E

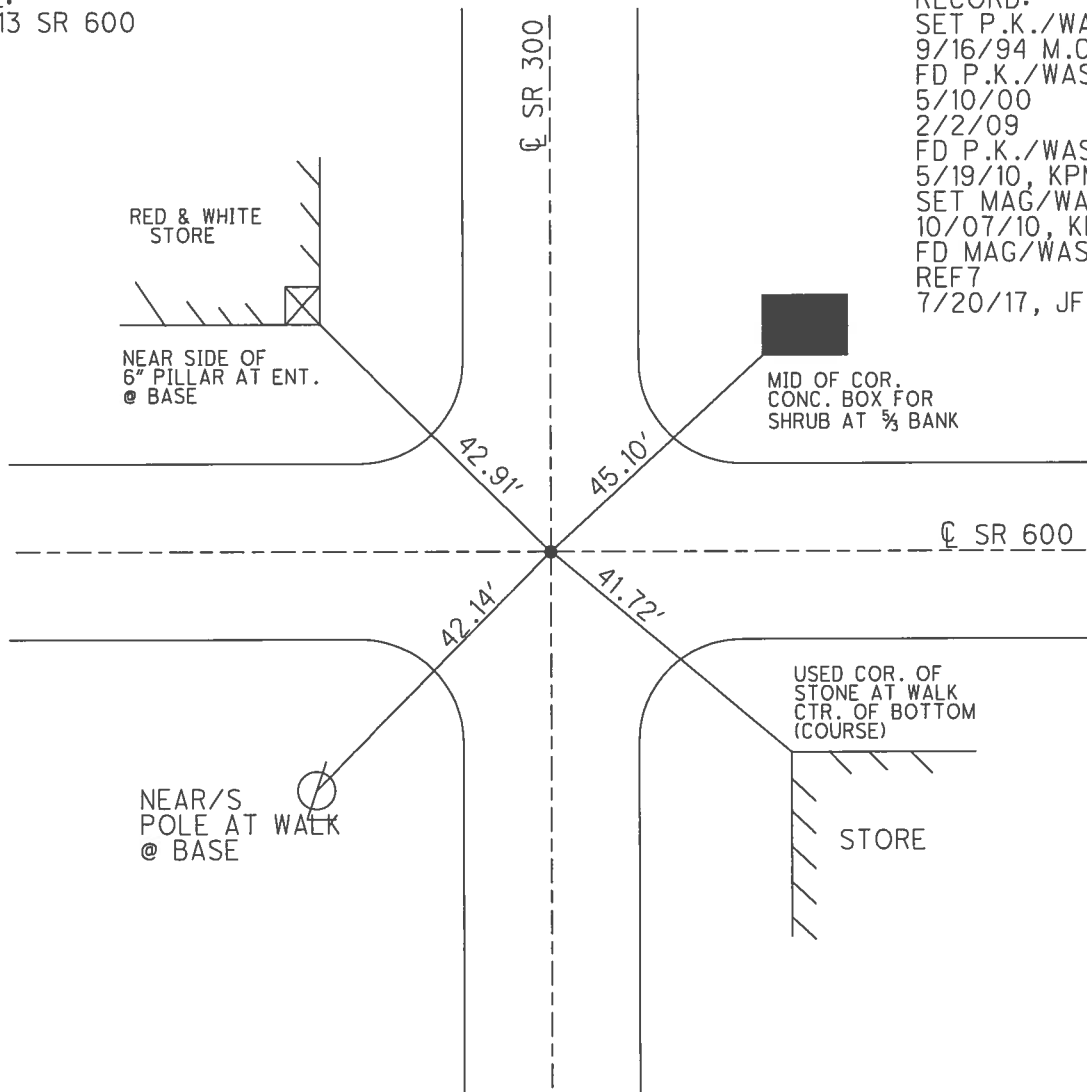
TYPE MONUMENT MAG/WASHER
 ON SURFACE - ~~BELOW~~ ON _____
 LEFT - ☉ PAV'T - RIGHT ON _____
10.2 TO LT. EDGE PAVEMENT
 S.L.M. 158+92.8



GRID: NORTHING: 626926.206 EASTING: 1743480.517

NOTE:
REF 13 SR 600

RECORD:
 SET P.K./WASHER
 9/16/94 M.C.
 FD P.K./WASHER
 5/10/00
 2/2/09
 FD P.K./WASHER
 5/19/10, KPM
 SET MAG/WASHER
 10/07/10, KPM
 FD MAG/WASHER
 REF7
 7/20/17, JFO



O.D.O.T. DISTRICT 2 SURVEY OFFICE (USE ONLY)

PERSONNEL

REFERENCE NO. 8

SHEET 11 OF 22

NOTES RHOADES DATE 7/20/22
 H.C. RHOADES WEATHER WINDY
 R.C. WHITAKER TEMP. 86°

ROUTE SR 300
 COUNTY SANDUSKY
 TOWNSHIP MADISON
 SECTION 14
 T 5 N R 13 E

DWG BY WHITAKER PID PVTRN

TYPE MONUMENT MAG/WASHER

ON SURFACE - BELOW ON

OFFSET \varnothing PAVEMENT ON LT : RT

11.5' TO LT EDGE PAVEMENT

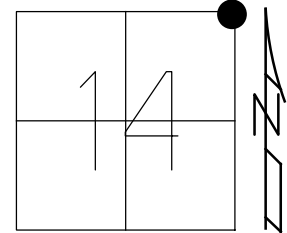
STATION: 185+20.73

HORZ.DATUM: NAD83 (2011)

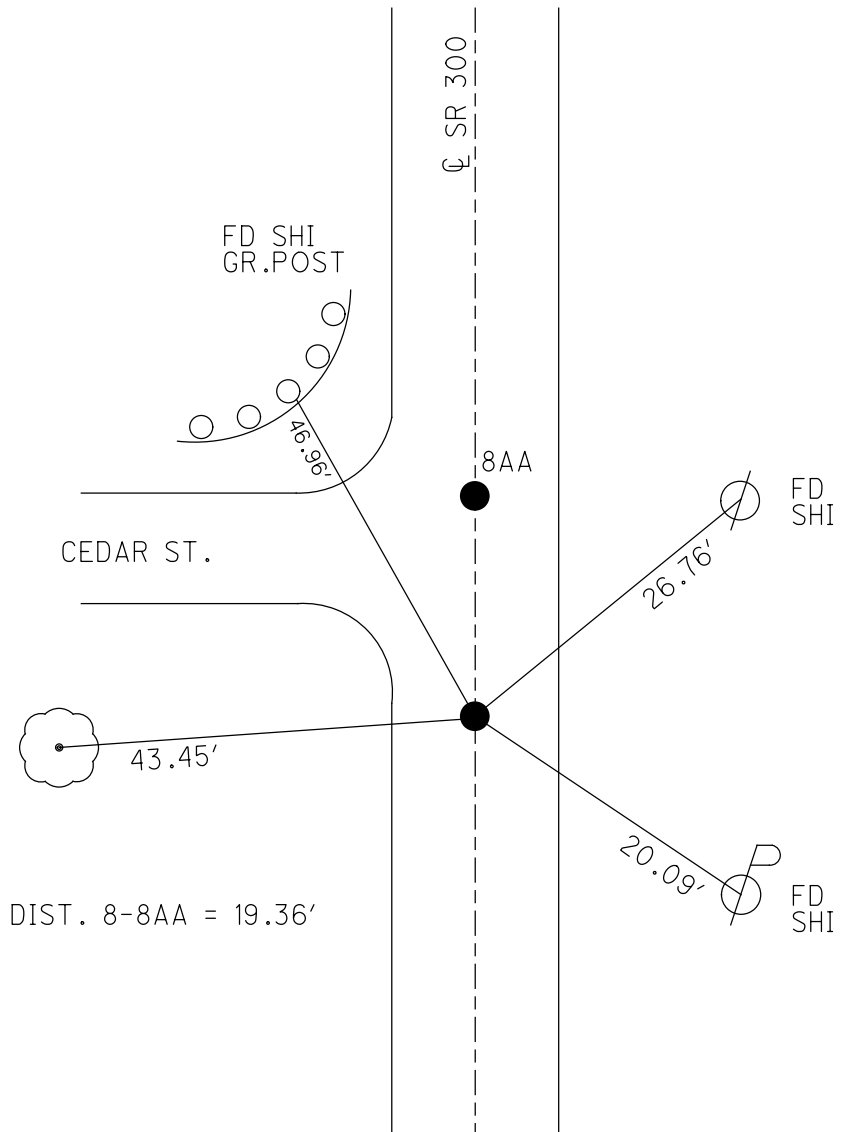
GEOID: 2012A

GRID: NORTHING: 629552.565

EASTING: 1743566.538



RECORD:
 FD IPIPE
 3" DOWN
 END OF BRICK SEC.
 1973
 SET P.K./WASHER
 9/16/94, M.C.
 FD P.K./WASHER
 5/10/00
 2/2/09
 FD P.K./WASHER
 5/19/10, KPM
 SET MAG/WASHER
 10/07/10, KPM
 FD MAG/WASHER
 REF8
 7/20/17, JFO
 11/15/17, JFO
 FD MAG/WASHER
 REF8
 4/22/21, DSA
 SET MAG/WASHER
 REF8
 7/20/22, JMR



O.D.O.T. DISTRICT 2 SURVEY OFFICE (USE ONLY)

PERSONNEL

REFERENCE NO. 8 AA

SHEET 12 OF 22

NOTES NIESE
 H.C. AUBLE
 R.C. NIESE

DATE 4/22/21
 WEATHER SUNNY
 TEMP. 37°

ROUTE SR 300
 COUNTY SANDUSKY
 TOWNSHIP MADISON
 SECTION 14
 T 5 N R 13 E

DWG BY NIESE PID CHIP SEAL

TYPE MONUMENT MAG/WASHER

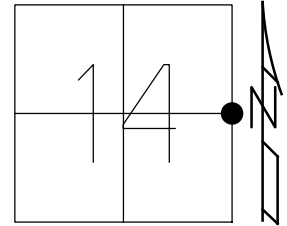
ON SURFACE - ~~BELOW~~ ON

OFFSET 0 PAVEMENT ON LT : RT
10.7' TO LT EDGE PAVEMENT

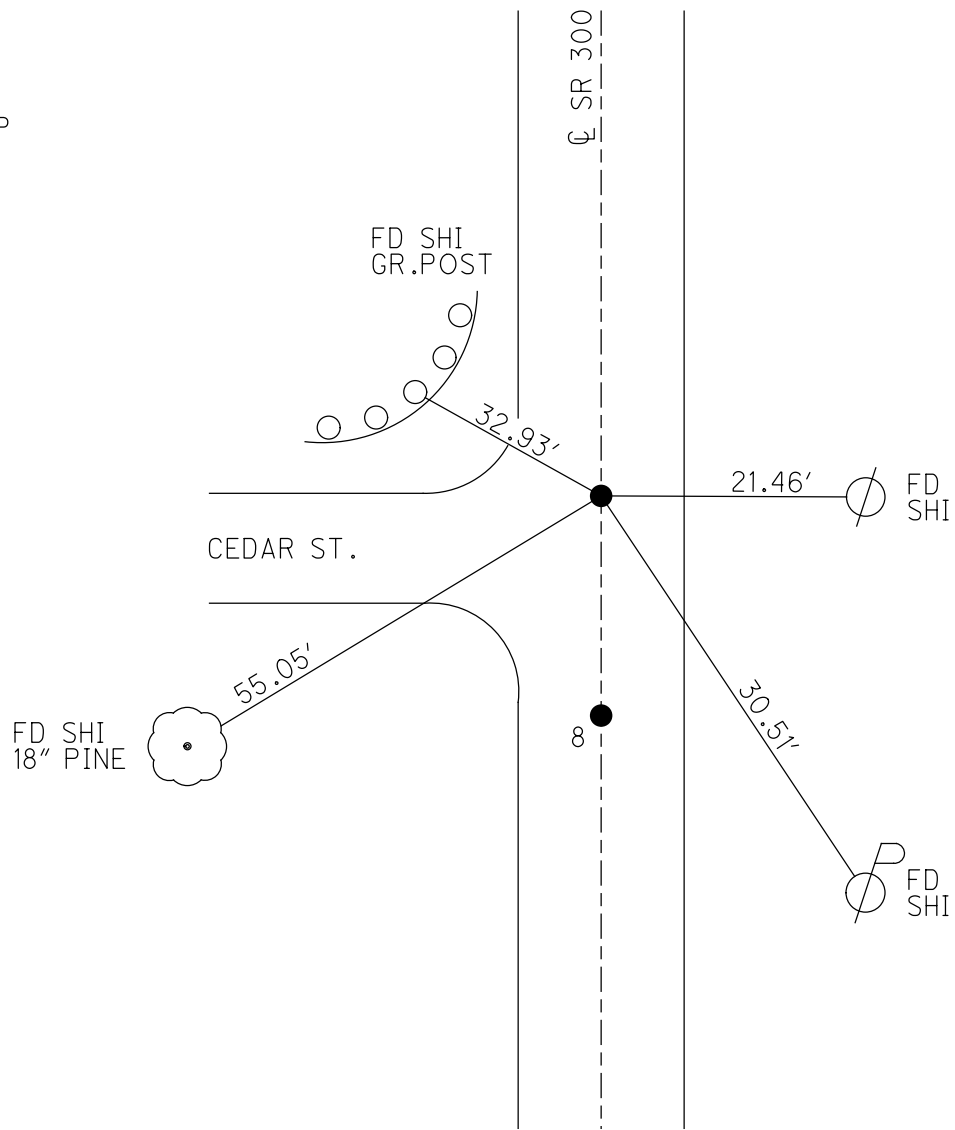
STATION: 185+40.03

HORIZ.DATUM: NAD83(2011) GEOID: 2018

GRID: NORTHING: 629571.890 EASTING: 1743567.629



RECORD: 1973
 N.CORP LINE
 GIBBSONBURG
 FD R.R.SPIKE ATOP
 IPIN BELOW
 SET P.K./WASHER
 9/16/94, M.C.
 FD P.K./WASHER
 5/10/00
 2/2/09
 FD P.K./WASHER
 5/19/10, KPM
 SET MAG/WASHER
 10/07/10, KPM
 FD MAG/WASHER
 REFAA8
 7/20/17,
 11/15/17, JFO
 FD MAG/WASHER
 REFAA8
 4/22/21, DSA
 10/6/21, JFO



O.D.O.T. DISTRICT 2 SURVEY OFFICE (USE ONLY)

PERSONNEL

REFERENCE NO. 8 AC

SHEET 13 OF 22

NOTES NIESE

DATE 4/22/21

ROUTE SR 300

H.C. AUBLE

WEATHER SUNNY

COUNTY SANDUSKY

R.C. NIESE

TEMP. 37°

TOWNSHIP MADISON

SECTION 14

DWG BY NIESE

PID CHIP SEAL

T 5 N R 13 E

TYPE MONUMENT MAG/WASHER

ON SURFACE - ~~BELOW~~ ON

OFFSET Q PAVEMENT ON LT : RT

11.5' TO LT EDGE PAVEMENT

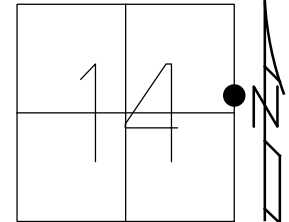
STATION: 189+91.50

HORZ.DATUM: NAD83(2011)

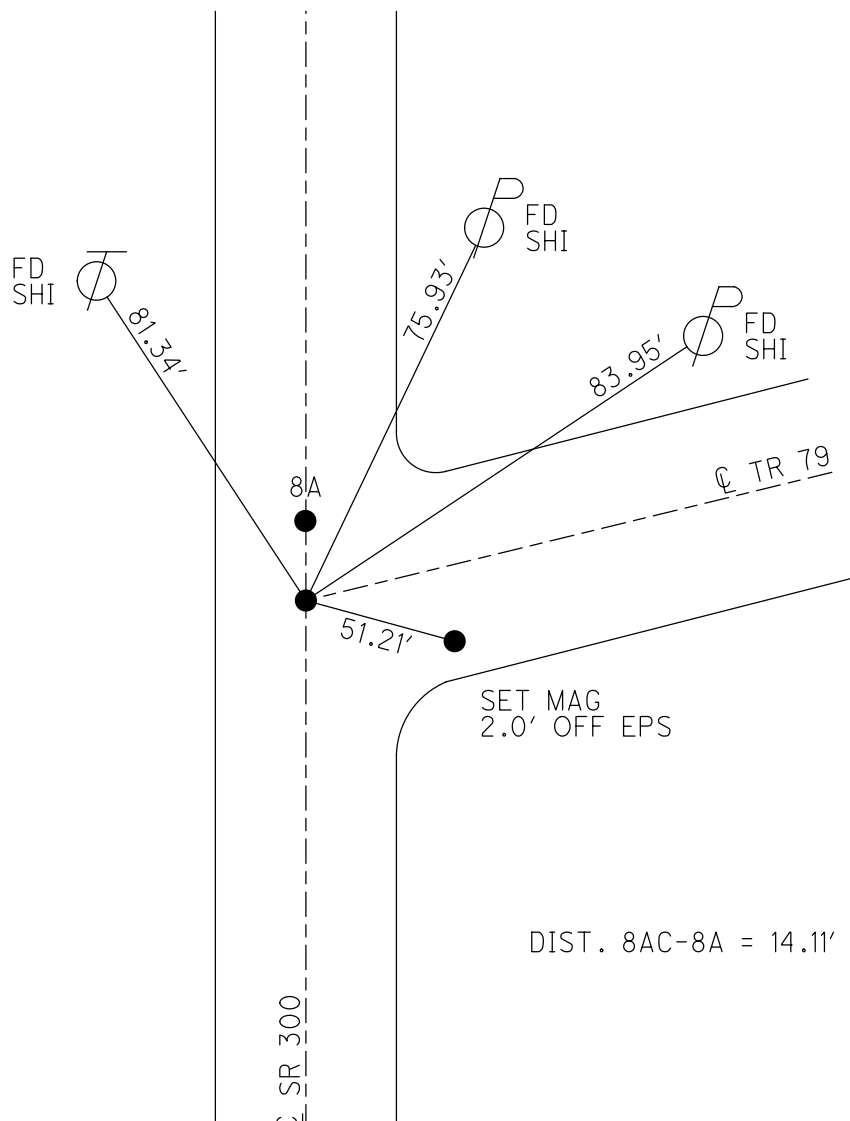
GEOID: 2018

GRID: NORTHING: 630010.329

EASTING: 1743582.075



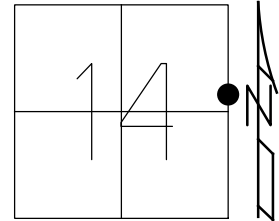
RECORD:
 SET P.K./WASHER
 9/16/94, M.C.
 FD P.K./WASHER
 2/2/09
 5/10/00
 5/19/10, KPM
 3/2/11, KPM
 FD P.K. NAIL
 4/16/13, SDC
 SET MAG/WASHER
 6/4/13, SDC
 FD MAG/WASHER
 REFAC8
 4/22/21, DSA
 10/6/21, JFO



O.D.O.T. DISTRICT 2 SURVEY OFFICE (USE ONLY)

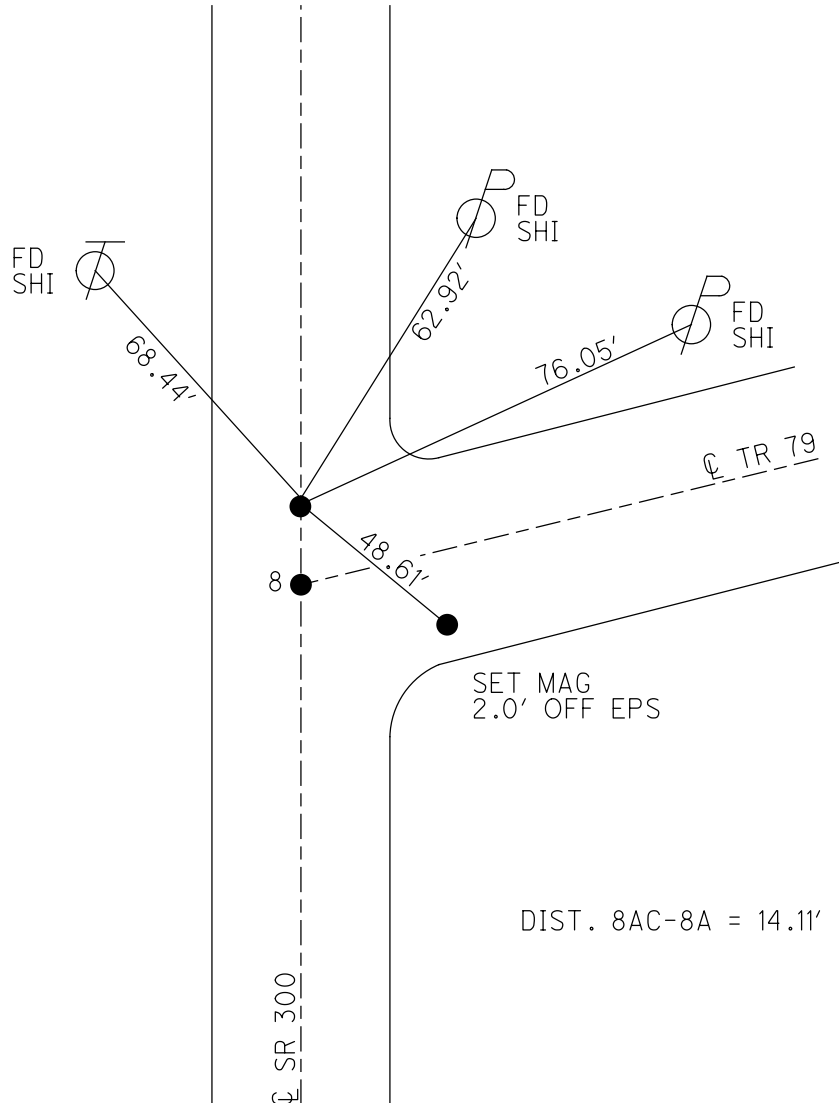
PERSONNEL _____ REFERENCE NO. 8 A SHEET 14 OF 22
 NOTES NIESE DATE 4/22/21 ROUTE SR 300
 H.C. AUBLE WEATHER SUNNY COUNTY SANDUSKY
 R.C. NIESE TEMP. 37° TOWNSHIP MADISON
 DWG BY NIESE PID CHIP SEAL SECTION 14
 T 5 N R 13 E

TYPE MONUMENT MAG/WASHER
 ON SURFACE - ~~BELOW~~ ON
 OFFSET ☉ PAVEMENT ON LT : RT
11.5' TO LT EDGE PAVEMENT
 STATION: 190+05.61



HORIZ.DATUM: NAD83(2011) GEOID: 2018
 GRID: NORTHING: 630024.376 EASTING: 1743582.626

RECORD:
 SET P.K./WASHER
 9/16/94, M.C.
 FD P.K./WASHER
 2/2/09
 5/10/00
 5/19/10, KPM
 3/2/11, KPM
 FD P.K. NAIL
 4/16/13, SDC
 SET MAG/WASHER
 6/4/13, SDC
 FD MAG/WASHER
 REFA8
 4/22/21, DSA
 10/6/21, JFO



O.D.O.T. DISTRICT 2 SURVEY OFFICE (USE ONLY)

PERSONNEL

REFERENCE NO. 8 B

SHEET 15 OF 22

NOTES NIESE

DATE 4/22/21

ROUTE SR 300

H.C. AUBLE

WEATHER SUNNY

COUNTY SANDUSKY

R.C. NIESE

TEMP. 37°

TOWNSHIP MADISON

SECTION 14

DWG BY NIESE

PID CHIP SEAL

T 5 N R 13 E

TYPE MONUMENT MAG/WASHER

ON SURFACE - ~~BELOW~~ ON

OFFSET Q PAVEMENT 1.2' LT : ~~RT~~

9.7' TO LT EDGE PAVEMENT

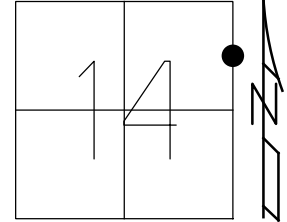
STATION: 197+75

HORIZ.DATUM: NAD83(2011)

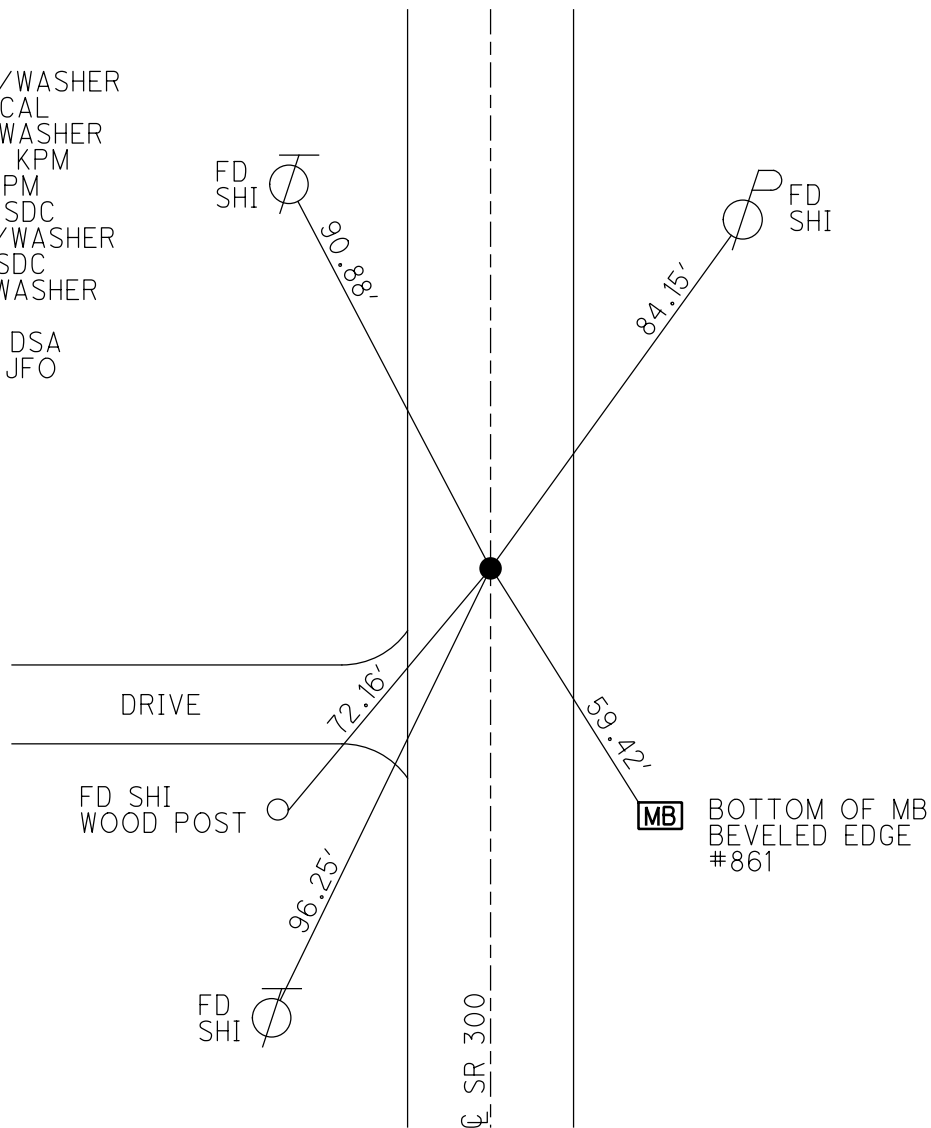
GEOID: 2018

GRID: NORTHING: 630805.650

EASTING: 1743608.632



- RECORD:
 SET P.K./WASHER
 9/16/94 CAL
 FD P.K./WASHER
 5/10/00, KPM
 3/2/11, KPM
 4/16/13, SDC
 SET MAG/WASHER
 6/4/13, SDC
 FD MAG/WASHER
 REFB8
 4/22/21, DSA
 10/6/21, JFO



O.D.O.T. DISTRICT 2 SURVEY OFFICE (USE ONLY)

PERSONNEL

REFERENCE NO. 9

SHEET 16 OF 22

NOTES NIESE

DATE 4/22/21

ROUTE SR 300

H.C. AUBLE

WEATHER CLOUDY/WINDY

COUNTY SANDUSKY

R.C. NIESE

TEMP. 37°

TOWNSHIP MADISON

SECTION 11

DWG BY NIESE PID CHIP SEAL

T 5 N R 13 E

TYPE MONUMENT MAG/WASHER

ON SURFACE - ~~BELOW~~ ON

OFFSET Q PAVEMENT 1.7' LT : ~~RT~~

- TO - EDGE PAVEMENT

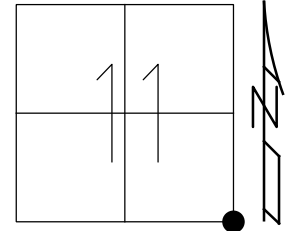
STATION: 211+91

HORZ.DATUM: NAD83(2011)

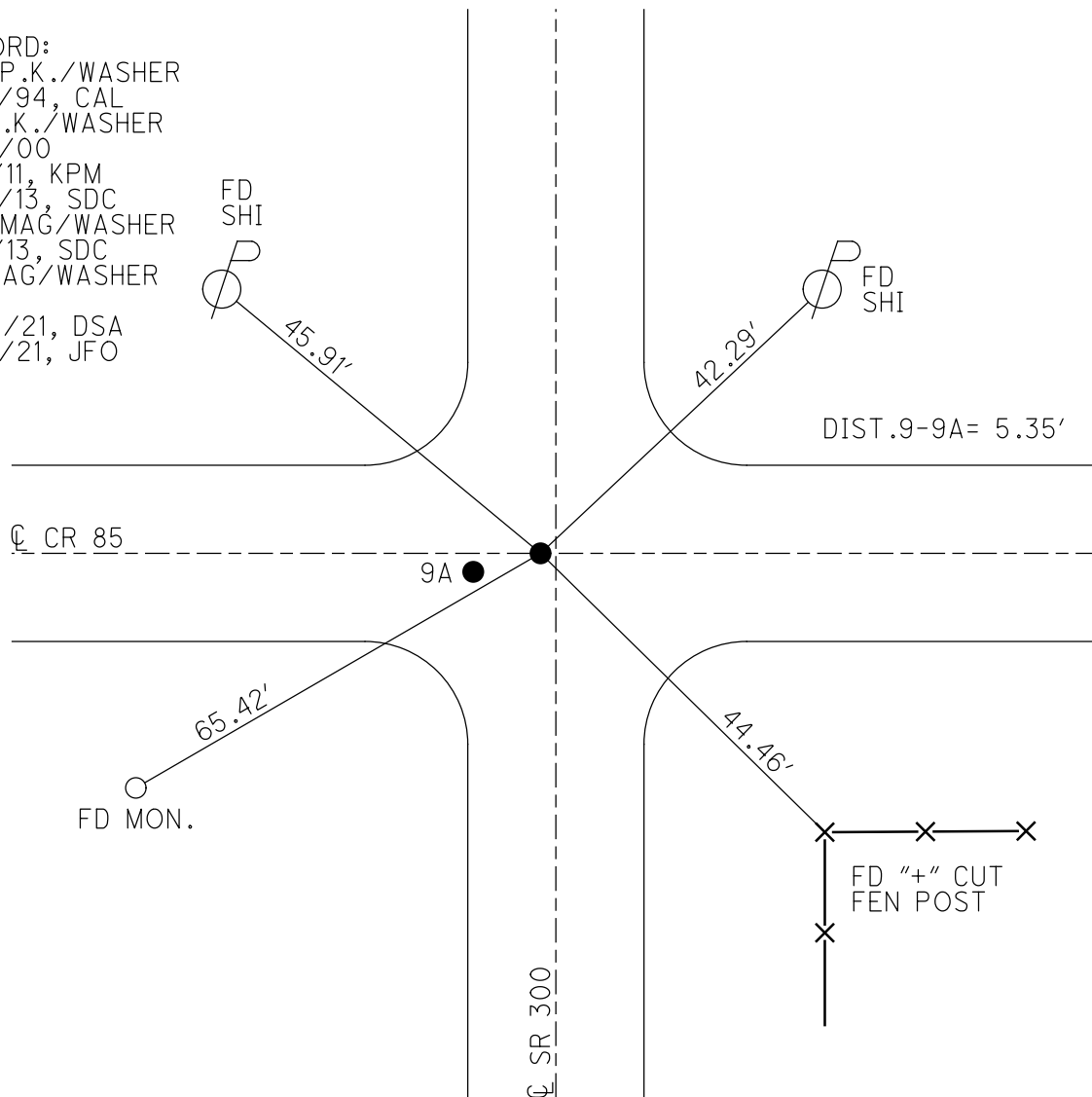
GEOID: 2018

GRID: NORTHING: 632218.440

EASTING: 1743655.404



RECORD:
 SET P.K./WASHER
 9/16/94, CAL
 FD P.K./WASHER
 5/10/00
 3/2/11, KPM
 4/16/13, SDC
 SET MAG/WASHER
 6/4/13, SDC
 FD MAG/WASHER
 REF9
 4/22/21, DSA
 10/6/21, JFO



O.D.O.T. DISTRICT 2 SURVEY OFFICE (USE ONLY)

PERSONNEL

REFERENCE NO. 9 A

SHEET 17 OF 22

NOTES NIESE

DATE 4/22/21

ROUTE SR 300

H.C. AUBLE

WEATHER CLOUDY/WINDY

COUNTY SANDUSKY

R.C. NIESE

TEMP. 37°

TOWNSHIP MADISON

SECTION 11

DWG BY NIESE PID CHIP SEAL

T 5 N R 13 E

TYPE MONUMENT MAG/WASHER

ON SURFACE - ~~BELOW~~ ON

OFFSET \varnothing PAVEMENT 7.0' LT : ~~RT~~

- TO - EDGE PAVEMENT

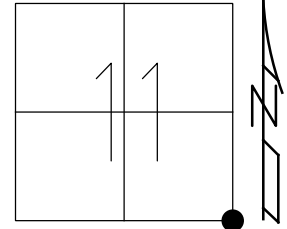
STATION: 211+93.35

HORZ.DATUM: NAD83(2011)

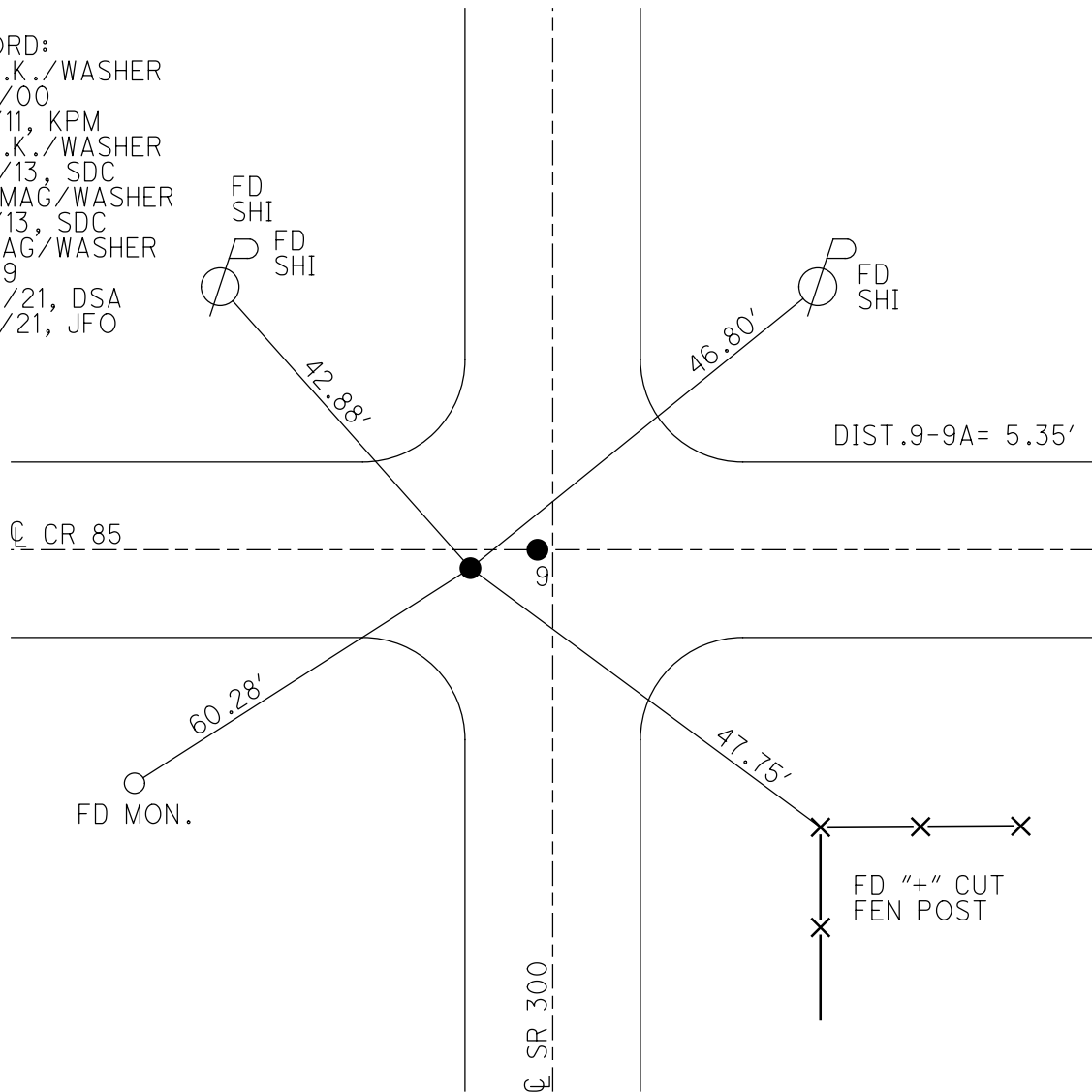
GEOID: 2018

GRID: NORTHING: 632217.592

EASTING: 1743650.128



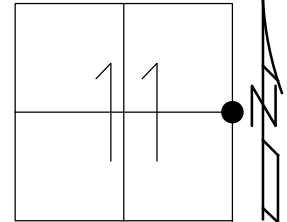
RECORD:
 FD P.K./WASHER
 5/10/00
 3/2/11, KPM
 FD P.K./WASHER
 4/16/13, SDC
 SET MAG/WASHER
 6/4/13, SDC
 FD MAG/WASHER
 REFA9
 4/22/21, DSA
 10/6/21, JFO



O.D.O.T. DISTRICT 2 SURVEY OFFICE (USE ONLY)

PERSONNEL _____ REFERENCE NO. 10 SHEET 18 OF 22
 NOTES NIESE DATE 4/22/21 ROUTE SR 300
 H.C. AUBLE WEATHER CLOUDY/WINDY COUNTY SANDUSKY
 R.C. NIESE TEMP. 42° TOWNSHIP WOODVILLE
 SECTION 11
 DWG BY NIESE PID CHIP SEAL T 5 N R 13 E

TYPE MONUMENT MAG/WASHER
 ON SURFACE - ~~BELOW~~ ON
 OFFSET Q PAVEMENT 7.3' LT : ~~RT~~
3.8' TO LT EDGE PAVEMENT
 STATION: 238+37.5

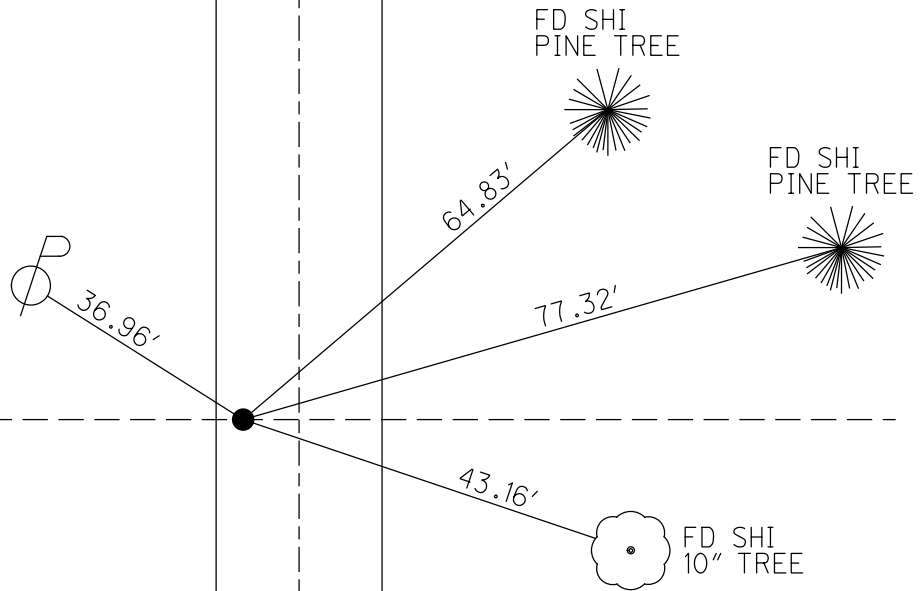


HORZ. DATUM: NAD83(2011) GEOID: 2018
 GRID: NORTHING: 634857.014 EASTING: 1743734.402

RECORD:
 W 1/4 POST SEC. 12
 E 1/4 POST SEC. 11
 FD STONE 23" BELOW
 SET 1" X 23' IPIPE
 OVER STONE
 1973 / 1984
 FD P.K./WASHER
 5/10/00
 3/2/11, KPM
 4/16/13, SDC
 SET MAG/WASHER
 6/4/13, SDC
 FD MAG/WASHER
 REF10
 4/22/21, DSA
 10/6/21, JFO

WOODVILLE TWP

 MADISON TWP



Q SR 300

O.D.O.T. DISTRICT 2 SURVEY OFFICE (USE ONLY)

PERSONNEL

REFERENCE NO. 11

SHEET 19 OF 22

NOTES NIESE

DATE 4/22/21

ROUTE SR 300

H.C. AUBLE

WEATHER CLOUDY, WINDY

COUNTY SANDUSKY

R.C. NIESE

TEMP. 42°

TOWNSHIP WOODVILLE

SECTION 11

DWG BY RHOADES

PID CHIP SEAL

T 5 N R 13 E

TYPE MONUMENT MONBOX W/1" IPIN

ON SURFACE - ~~BELOW~~ ON

OFFSET CL PAVEMENT 7.7' LT : ~~RT~~

3.0' TO LT EDGE PAVEMENT

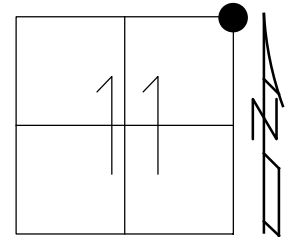
STATION: 264+76

HORZ.DATUM: NAD83 2011

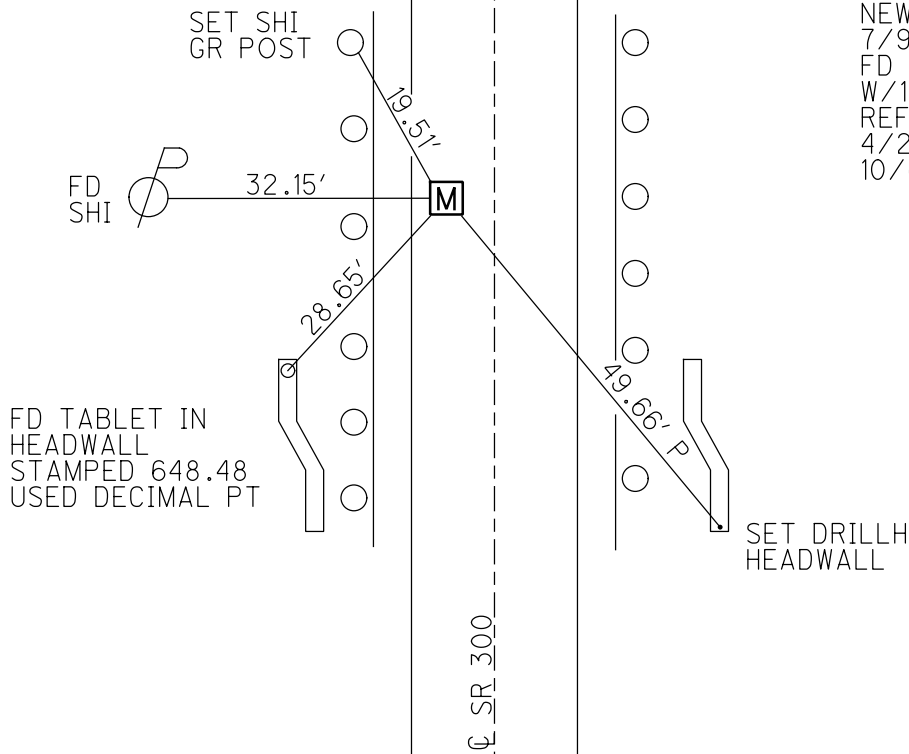
GEOID: NAVD88 2018

GRID: NORTHING: 637487.728

EASTING: 1743814.342



RECORD: 1984
 $\Delta = 0^\circ 22' 00''$ RT
 FD STONE 23" DOWN
 1973
 FD MONBOX
 5/10/00
 3-2-11, KPM
 FD MONBOX
 4/16/13, SDC
 SET MAG/WASHER
 FINREF11
 6/4/13, SDC
 MONBOX RESET
 NEWREF11
 7/9/13, SDC
 FD MONBOX
 W/1" IPIN
 REF11
 4/22/21, DSA
 10/6/21, JFO



O.D.O.T. DISTRICT 2 SURVEY OFFICE (USE ONLY)

PERSONNEL _____

REFERENCE NO. 12

SHEET 20 OF 22

NOTES NIESH

DATE 4/22/21

ROUTE SR 300

H.C. AUBLE

WEATHER CLOUDY, WINDY

COUNTY SUNDUSKY

R.C. NIESH

TEMP. 42°

TOWNSHIP WOODVILLE

SECTION 1

DWG BY RHOADES

PID CHIP SEAL

T 5 N R 13 E

TYPE MONUMENT MAG/WASHER

ON SURFACE - ~~BELOW~~ ON

OFFSET Q PAVEMENT 5.5' LT : ~~RT~~

15.0' TO RT EDGE PAVEMENT

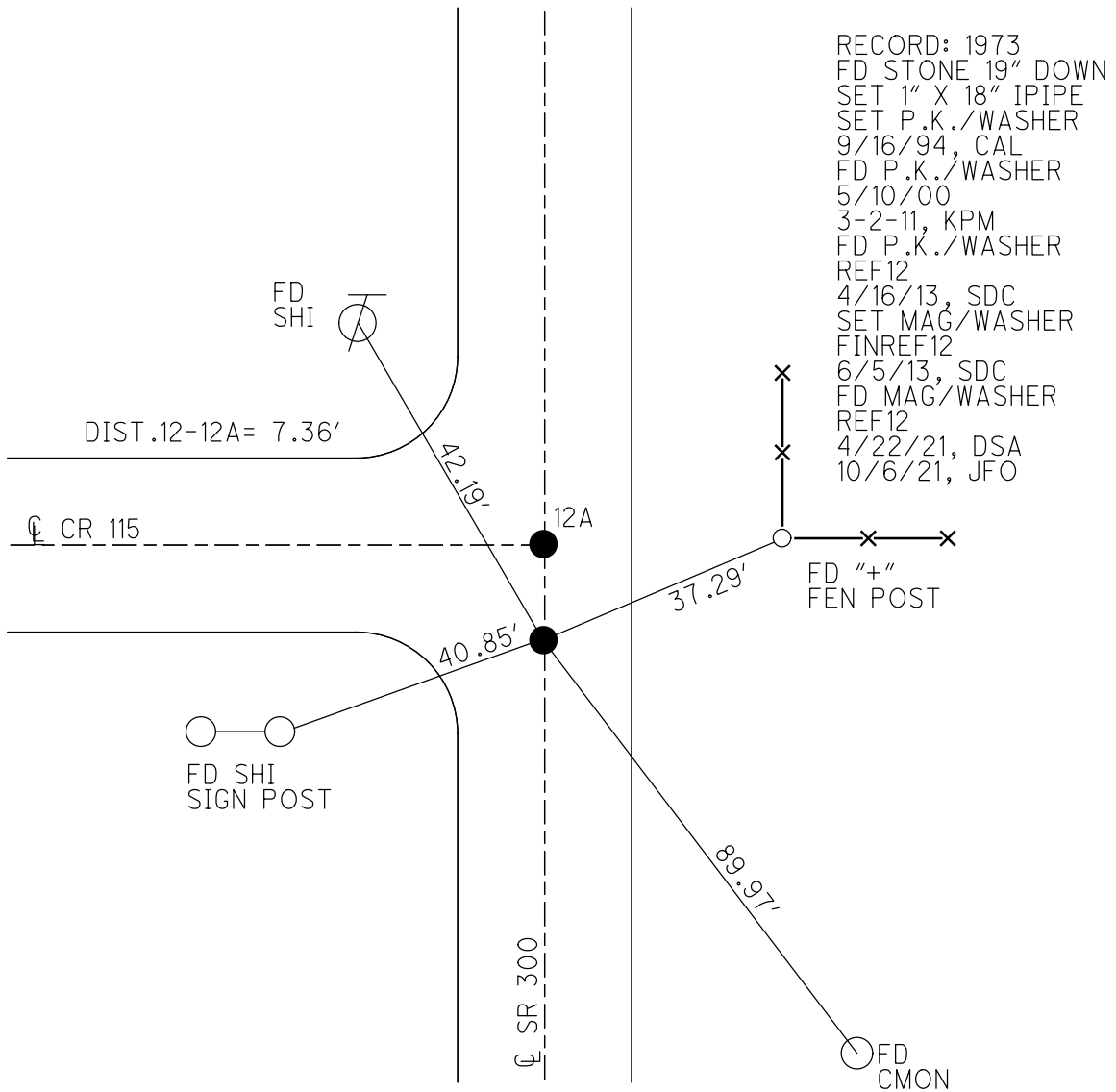
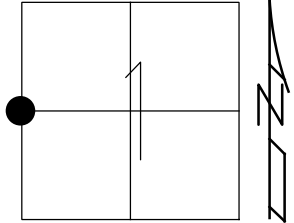
STATION: 291+25

HORZ. DATUM: NAD83 2011

GEOID: NAVD88 2018

GRID: NORTHING: 640127.055

EASTING: 1743911.651



O.D.O.T. DISTRICT 2 SURVEY OFFICE (USE ONLY)

PERSONNEL _____ REFERENCE NO. 12 A SHEET 21 OF 22
 NOTES NIESH DATE 4/22/21 ROUTE SR 300
 H.C. AUBLE WEATHER CLOUDY, WINDY COUNTY SANDUSKY
 R.C. NIESE TEMP. 42° TOWNSHIP WOODVILLE
 _____ SECTION 1
 DWG BY RHOADES PID CHIP SEAL T 5 N R 13 E

TYPE MONUMENT MAG/WASHER

ON SURFACE - ~~BELOW~~ ON

OFFSET ☉ PAVEMENT ON LT : RT

10.5' TO RT EDGE PAVEMENT

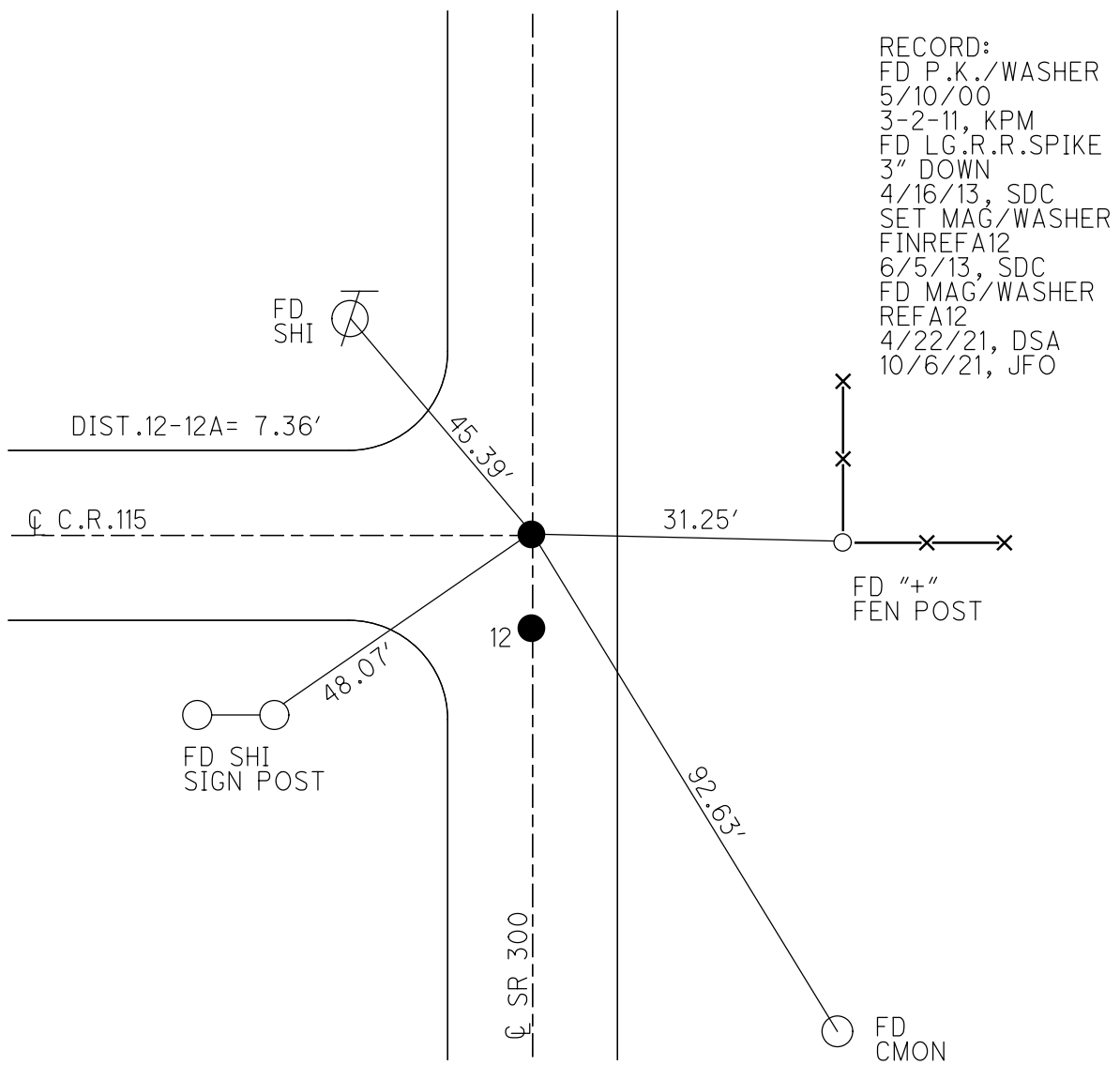
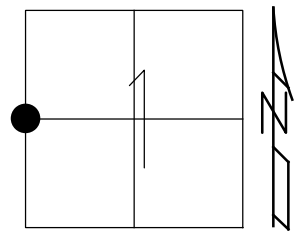
STATION: 291+32

HORIZ.DATUM: NAD83 2011

GEOID: NAVD88 2018

GRID: NORTHING: 640131.732

EASTING: 1743917.333



O.D.O.T. DISTRICT 2 SURVEY OFFICE (USE ONLY)

PERSONNEL

REFERENCE NO. 14

SHEET 22 OF 22

NOTES HARBAUGH

DATE 7/6/11

ROUTE SR 300

H.C. MOSER

WEATHER CLOUDY

COUNTY SANDUSKY

R.C. FINGER

TEMP. 89°

TOWNSHIP WOODVILLE

SECTION 35

T 5 N R 13 E

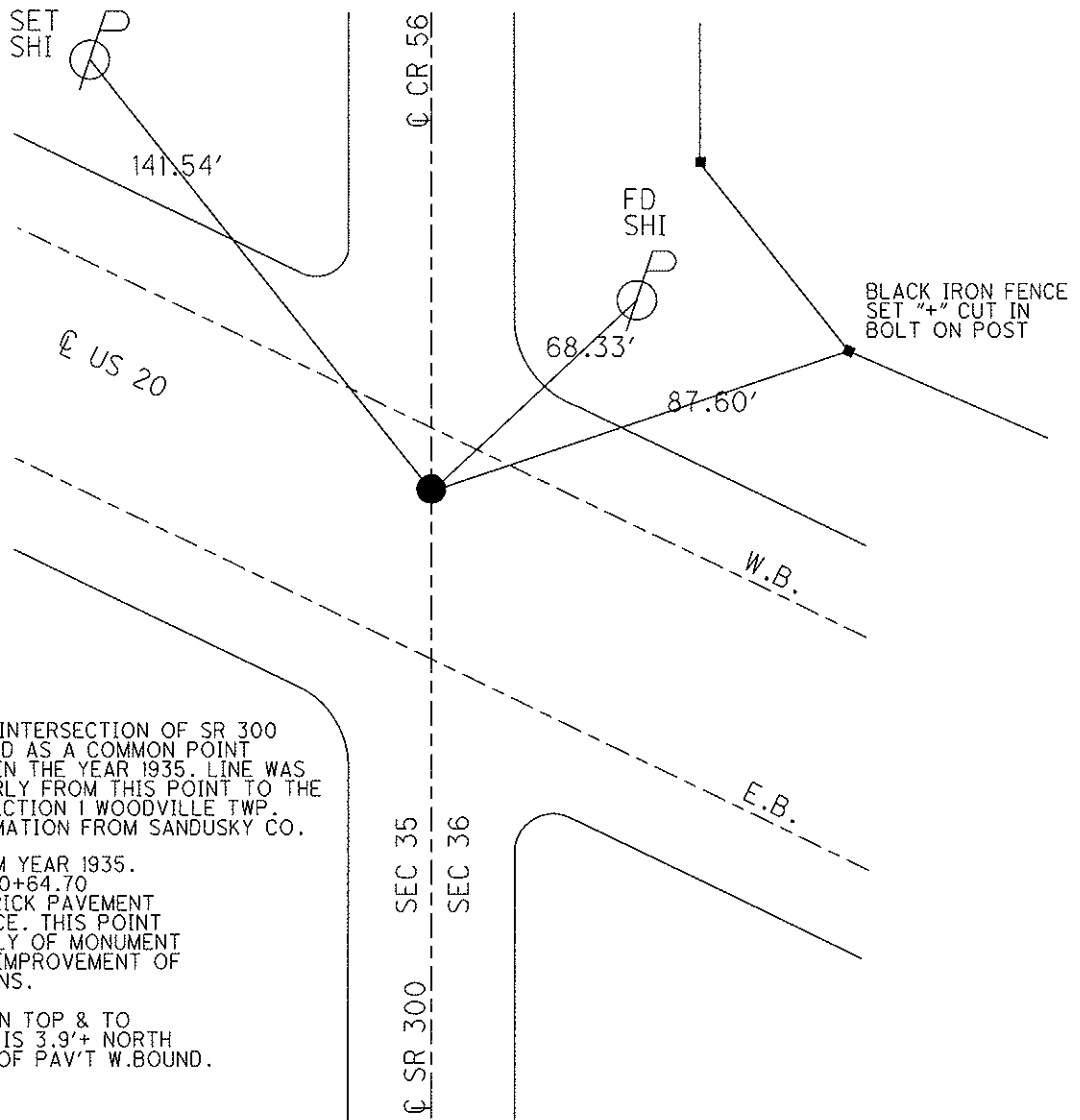
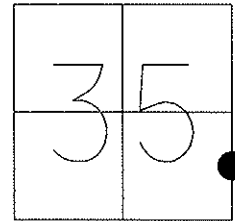
TYPE MONUMENT MON.BOX

ON SURFACE - ~~BELOW~~ ON

~~LEFT~~ - Q PAV'T - RIGHT 8.8', WB LANE
 - TO - EDGE PAVEMENT

S.L.M. (334+22.4)

Grid: Northing: 644416.204 Easting: 1744048.091



NOTE: REF 7
ON US 20

GPS, REF7
6/16/11, KPM

NOTE: POINT AT INTERSECTION OF SR 300 & US 20 WAS USED AS A COMMON POINT NORTH & SOUTH IN THE YEAR 1935. LINE WAS RUNNING SOUTHERLY FROM THIS POINT TO THE W 1/4 POST OF SECTION 1 WOODVILLE TWP. T5N,R13E. INFORMATION FROM SANDUSKY CO.

NOTE: INFO FROM YEAR 1935.
SECTION "M"- 300+64.70
FD "X" CUT IN BRICK PAVEMENT
8" BELOW SURFACE. THIS POINT
IS 4.5'+ EASTERLY OF MONUMENT
BOX SET AFTER IMPROVEMENT OF
US 20- 1968 PLANS.

SET R.R.SPIKE ON TOP & TO
SURFACE. POINT IS 3.9'+ NORTH
OF SOUTH EDGE OF PAV'T W.BOUND.