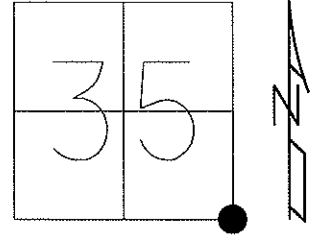


O.D.O.T. DISTRICT 2 SURVEY OFFICE (USE ONLY)

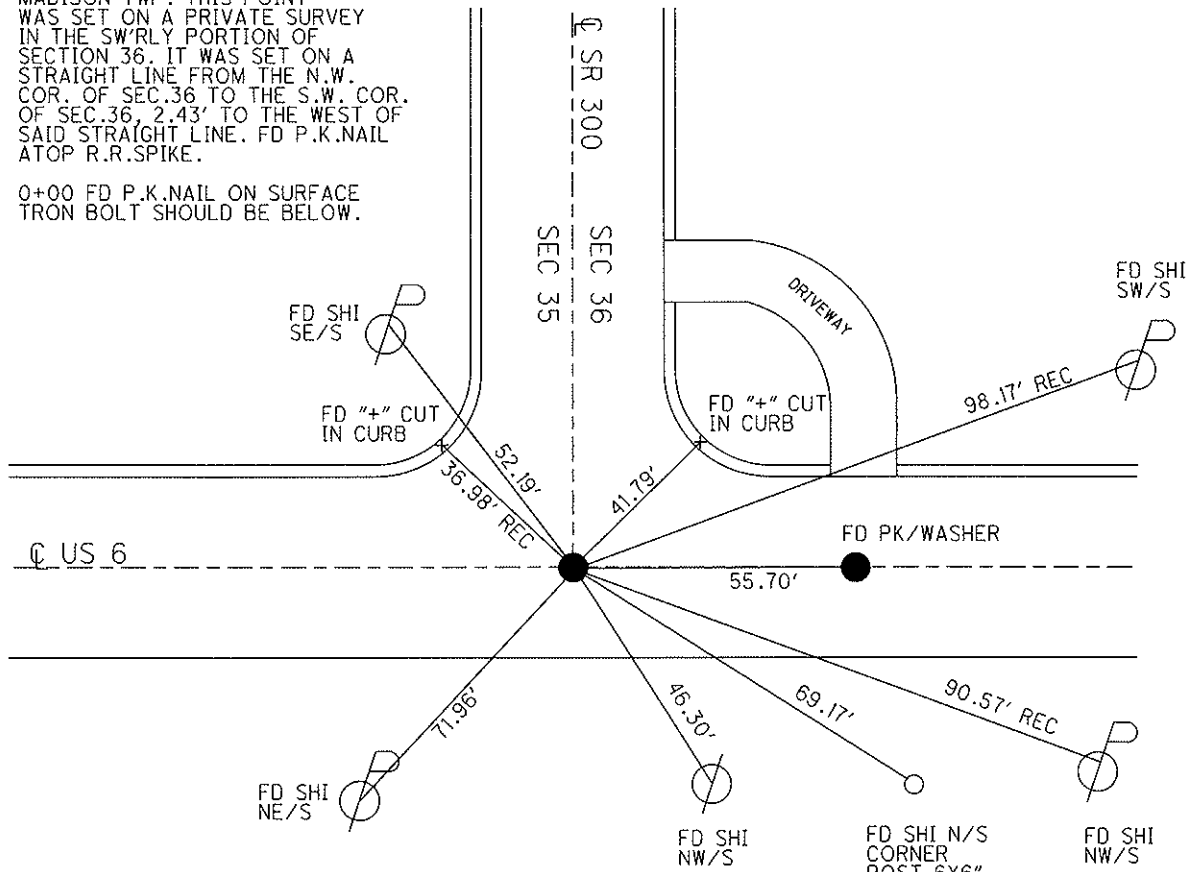
PERSONNEL _____ REFERENCE NO. 1 SHEET 1 OF 22
 NOTES HOMAN DATE 8/12/09 ROUTE SR 300
 H.C. HOMAN WEATHER CLOUDY COUNTY SANDUSKY
 R.C. ROUSOS TEMP. 75° TOWNSHIP MADISON
 SECTION 35
 T 5 N R 13 E

TYPE MONUMENT SM.R.R.SPIKE
 ON SURFACE - ~~BELOW~~ ON
~~LEFT~~ - ℄ PAV'T - RIGHT 1.0', (US 6=ON)
12.2' TO RT EDGE PAVEMENT
 S.L.M. 0+00, (US 6= 265+66 REC)
 Grid: Northing: _____ Easting: _____



NOTE: 11/5/73
 MADISON TWP. THIS POINT
 WAS SET ON A PRIVATE SURVEY
 IN THE SW'RLY PORTION OF
 SECTION 36. IT WAS SET ON A
 STRAIGHT LINE FROM THE N.W.
 COR. OF SEC.36 TO THE S.W. COR.
 OF SEC.36, 2.43' TO THE WEST OF
 SAID STRAIGHT LINE. FD P.K.NAIL
 ATOP R.R.SPIKE.

0+00 FD P.K.NAIL ON SURFACE
 TRON BOLT SHOULD BE BELOW.



FD P.K./WASHER
 4/16/93 MB

RESET SM.R.R.SPIKE
 5/7/93 MB

FD SM.R.R.SPIKE
 5/10/00, MAINTENANCE

O.D.O.T. DISTRICT 2 SURVEY OFFICE

PERSONNEL

REFERENCE NO. 10

SHEET OF

NOTES BARNHISEL

H.C. VAN DUSEN

R.C. CORDES

GREEN

DATE 4-6-93

WEATHER SUNNY

TEMP. +40°

ROUTE US 6

COUNTY SAN DUSKY

TOWNSHIP MADISON

SECTION 35

T5 N R 13 E

TYPE MONUMENT PK + WASHER

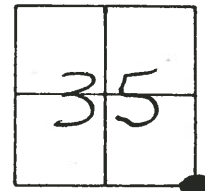
ON SURFACE - ~~WOOD~~ yes

~~EST - C~~ PAV'T. - ~~RIGHT~~ yes

12.5 TO RT EDGE PAVEMENT

S.L.M. 265+66

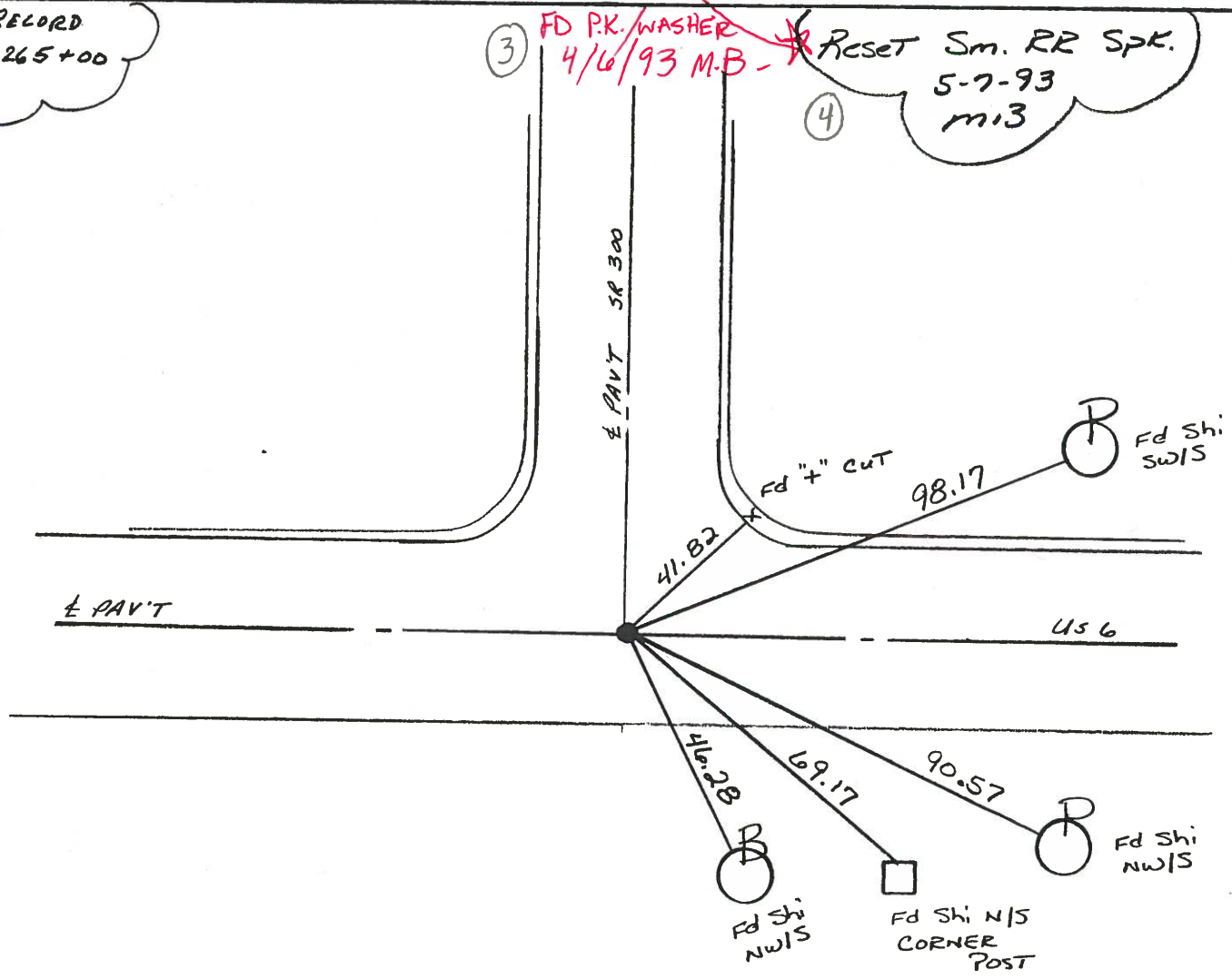
1



1.0 E. OF E. SE. 300

RECORD
265+00

(3) FD PK. WASHER
4/6/93 M.B. - *
(4) RESET Sm. RR SPK.
5-7-93
M13



(5) Preventive Maintenance
Microsurfaced 2000
Existing Point Uncovered
Date 5-10-2000

PERSONNEL TITLE PERSONNEL TITLE

Cronin
Ash
Lippie

COUNTY Sandusky

DATE Drawn 11/5/73

S. R. # 300

WEATHER

SEC. U.S. #6 to U.S. #20

TEMP.

DESCRIPTION Ties for Control Points

JOB NO.

LEFT

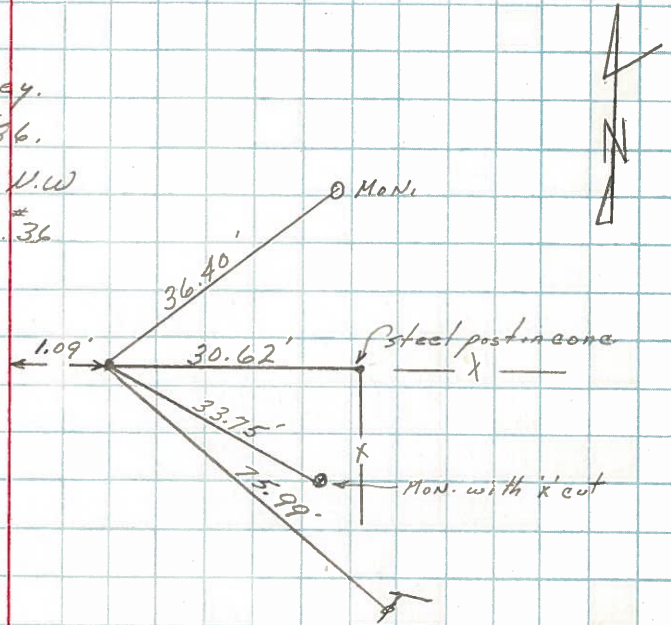
CENTER LINE

R/W

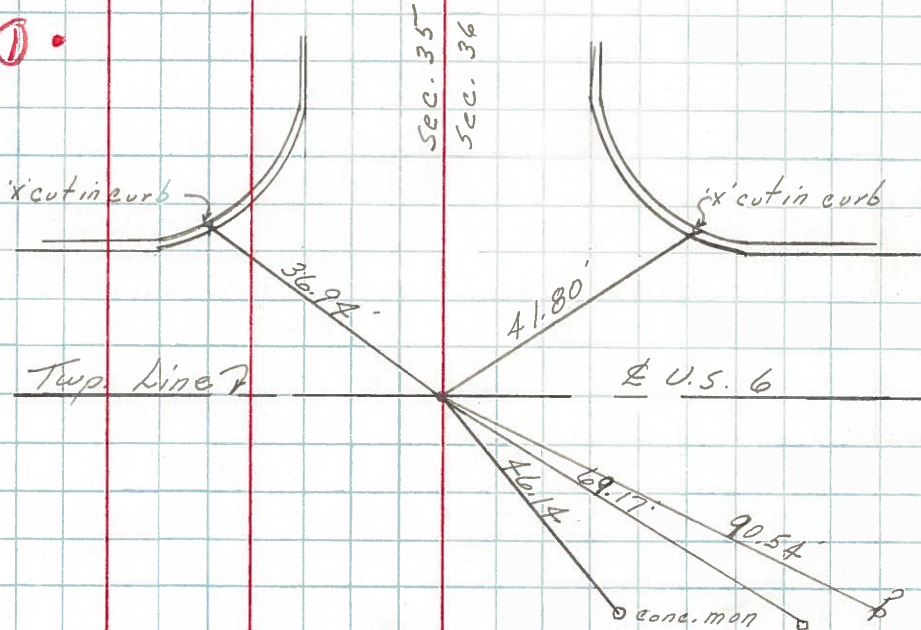
RIGHT

Madison Twp.
Note: This point was set on a private survey, in the southwesterly portion of Section #36. It was set on a straight line from the N.W. corner of Sec. 36 to the S.W. corner of Sec. #36. Fd. stone at W $\frac{1}{4}$ post of Sec. 36, ^{# Sec sheet, 2} 2.43 to the west of said straight line.
Fd. P.K. nail atop R.R. spike

IA



1



0+00

Found P.K. nail on surface. Iron bolt should be below

2