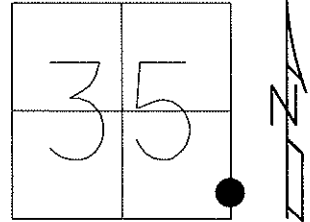


O.D.O.T. DISTRICT 2 SURVEY OFFICE (USE ONLY)

PERSONNEL _____ REFERENCE NO. 1 A SHEET 2 OF 22
 NOTES RHOADES DATE 4/16/13 ROUTE SR 300
 H.C. CODER WEATHER RAIN COUNTY SANDUSKY
 R.C. RHOADES TEMP. 51° TOWNSHIP MADISON
 _____ SECTION 35
 _____ T 5 N R 13 E

TYPE MONUMENT P.K./WASHER
 ON SURFACE - ~~BELOW~~ ON
 LEFT - ~~C PAV'T~~ = RIGHT 5.5'
4.2' TO LT EDGE PAVEMENT
 S.L.M. 13+21



Grid: Northing: 612406.556 Easting: 1743122.051

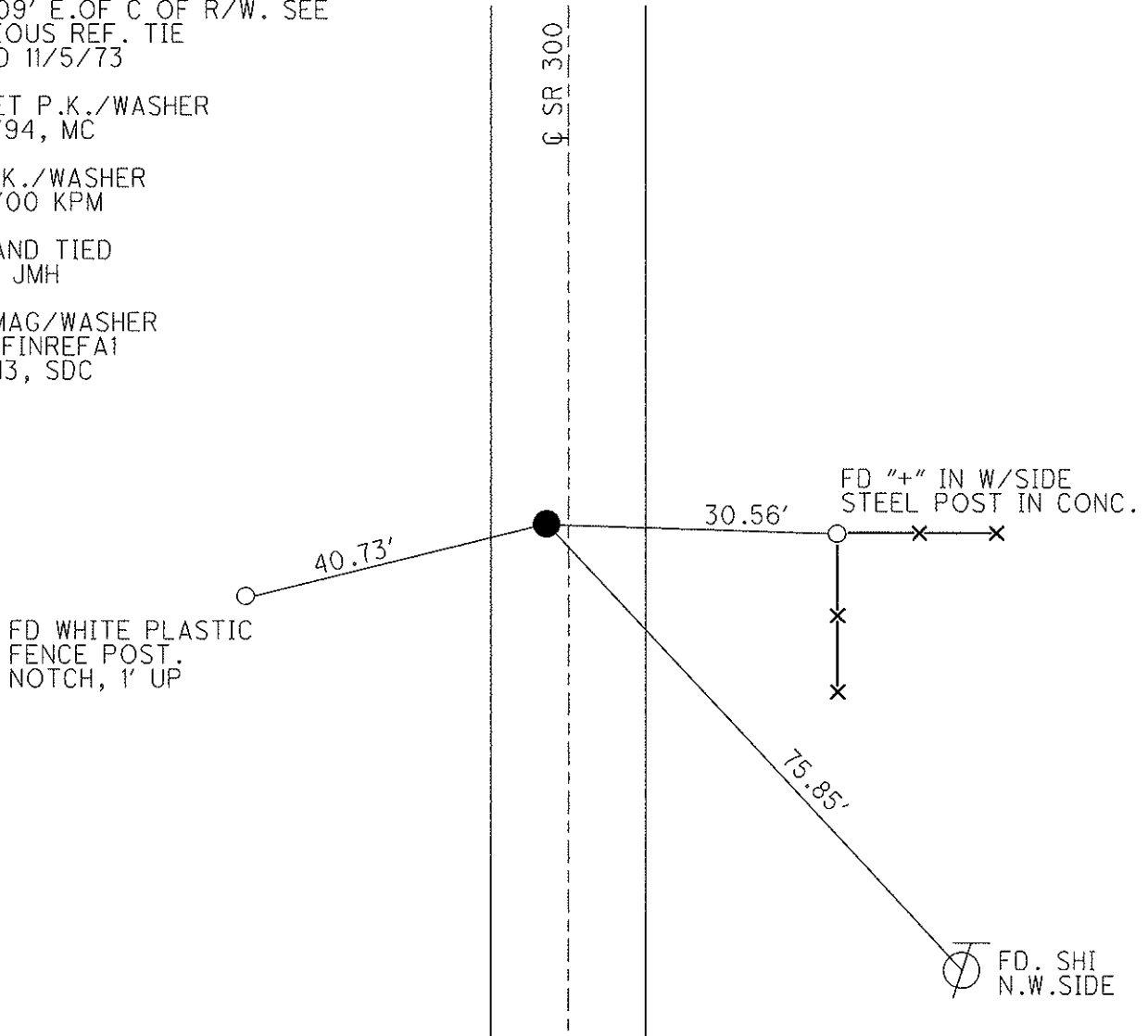
NOTE: POINT IS BELIEVED TO BE 1.09' E. OF C. OF R/W. SEE PREVIOUS REF. TIE DATED 11/5/73

RE-SET P.K./WASHER
 9/16/94, MC

FD P.K./WASHER
 5/10/00 KPM

GPS AND TIED
 1-7-11 JMH

SET MAG/WASHER
 GPS, FINREFA1
 6/3/13, SDC



O.D.O.T. DISTRICT 2 SURVEY OFFICE

PERSONNEL

REFERENCE NO. 1-A

SHEET 1 OF 15

NOTES LOEHRKE

H.C. CANTERBURY

R.C. HERMILLER

VOGEL

DATE 7/19/94

WEATHER FAIR

TEMP. + 85°

ROUTE S.R.#300

COUNTY Sandusky

TOWNSHIP Madison

SECTION 26

T S N R 13 E

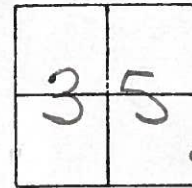
TYPE MONUMENT PK NAIL/WASHER

ON SURFACE - ~~BELOW~~ ON SURFACE

LEFT- & PAV'T. - ~~RIGHT~~ 5.3' LT. &

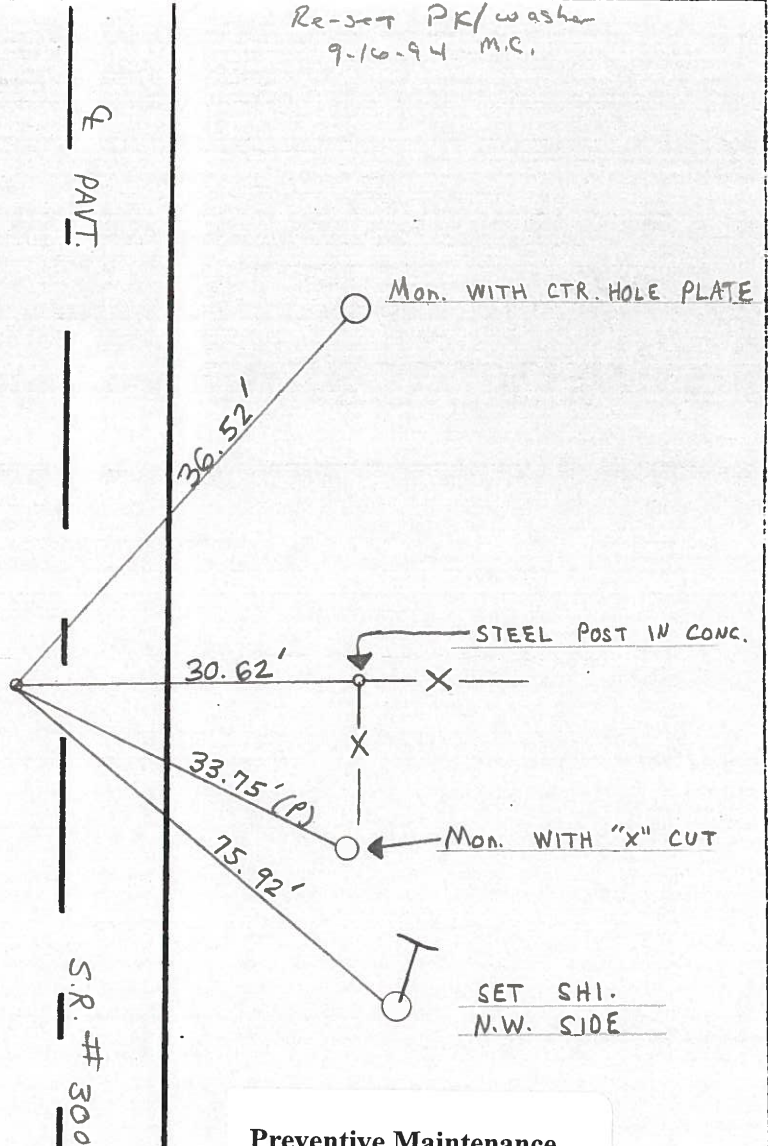
4.2' TO LT. EDGE PAVEMENT

S.L.M. 13+21



NOTE: Point is believed to be 1.09' E. of & of R/W, see previous Ref. Tie dated 11/5/73

Re-set PK/washer 9-16-94 M.C.



Preventive Maintenance
 Microsurfaced 2000
 Existing Point Uncovered
 Date 5-10-2000

PERSONNEL TITLE PERSONNEL TITLE

Cronin
Ash
Ripple

COUNTY Sandusky DATE Drawn 11/5/73

S. R. # 300 WEATHER

SEC. U.S. # 6 to U.S. # 20 TEMP.

DESCRIPTION Ties for Control Points JOB NO.

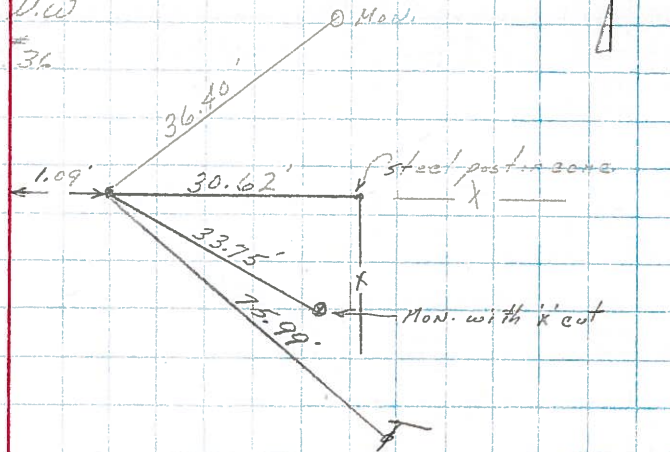
LEFT CENTER LINE RIGHT

Madison Twp.

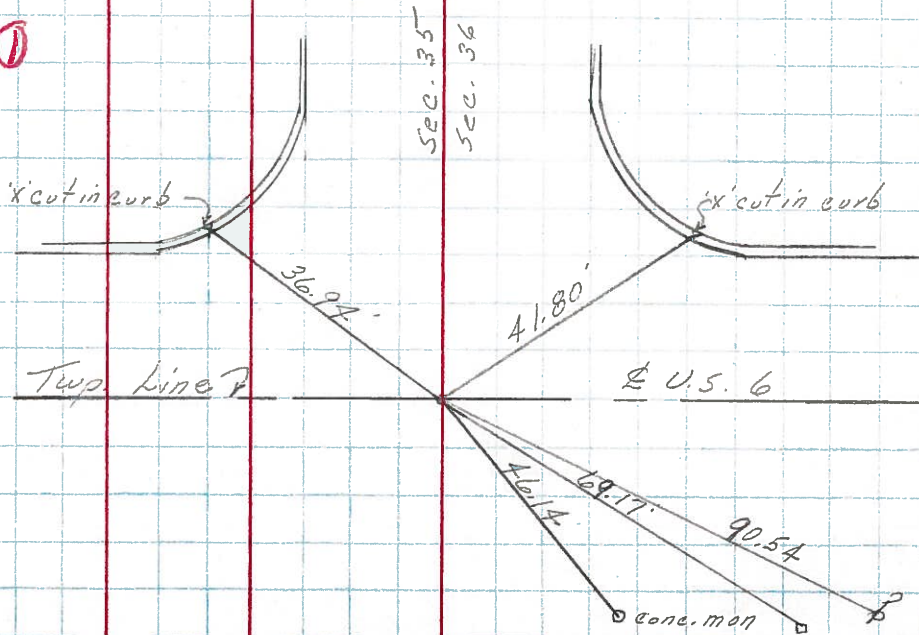
Note: This point was set on a private survey in the southwesterly portion of Section # 36. It was set on a straight line from the U.W. corner of Sec. 36 to the S.W. corner of Sec. # 36. Ed. stone at W 1/4 post of Sec. 36, 2.43 to the west of said straight line

Ed. P.K. nail atop P.K. spike

(1A)



(1)



0+00

Found P.K. nail on surface Iron bolt should be below

(2)

PERSONNEL	TITLE	PERSONNEL	TITLE	COUNTY	DATE
Schneider		Potts		San	4 7 08
Mosser				S. R.	30
Barbour				WEATHER	40
Redding				SEC.	0.0
				TEMP.	6

DESCRIPTION Ties for Control Point JOB NO. _____

