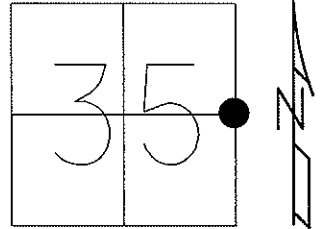


O.D.O.T. DISTRICT 2 SURVEY OFFICE (USE ONLY)

PERSONNEL \_\_\_\_\_ REFERENCE NO. 2 SHEET 3 OF 22  
 NOTES RHOADES DATE 4/16/13 ROUTE SR 300  
 H.C. CODER WEATHER RAIN COUNTY SANDUSKY  
 R.C. RHOADES TEMP. 51° TOWNSHIP MADISON  
 \_\_\_\_\_ SECTION 35  
 \_\_\_\_\_ T 5 N R 13 E

TYPE MONUMENT P.K./WASHER  
 ON SURFACE - ~~BELOW~~ ON \_\_\_\_\_  
 LEFT - ~~C PAV'T~~ = RIGHT 7.5'  
2.5' TO LT EDGE PAVEMENT  
 S.L.M. 26+41



Grid: Northing: 613724.450 Easting: 1743126.853

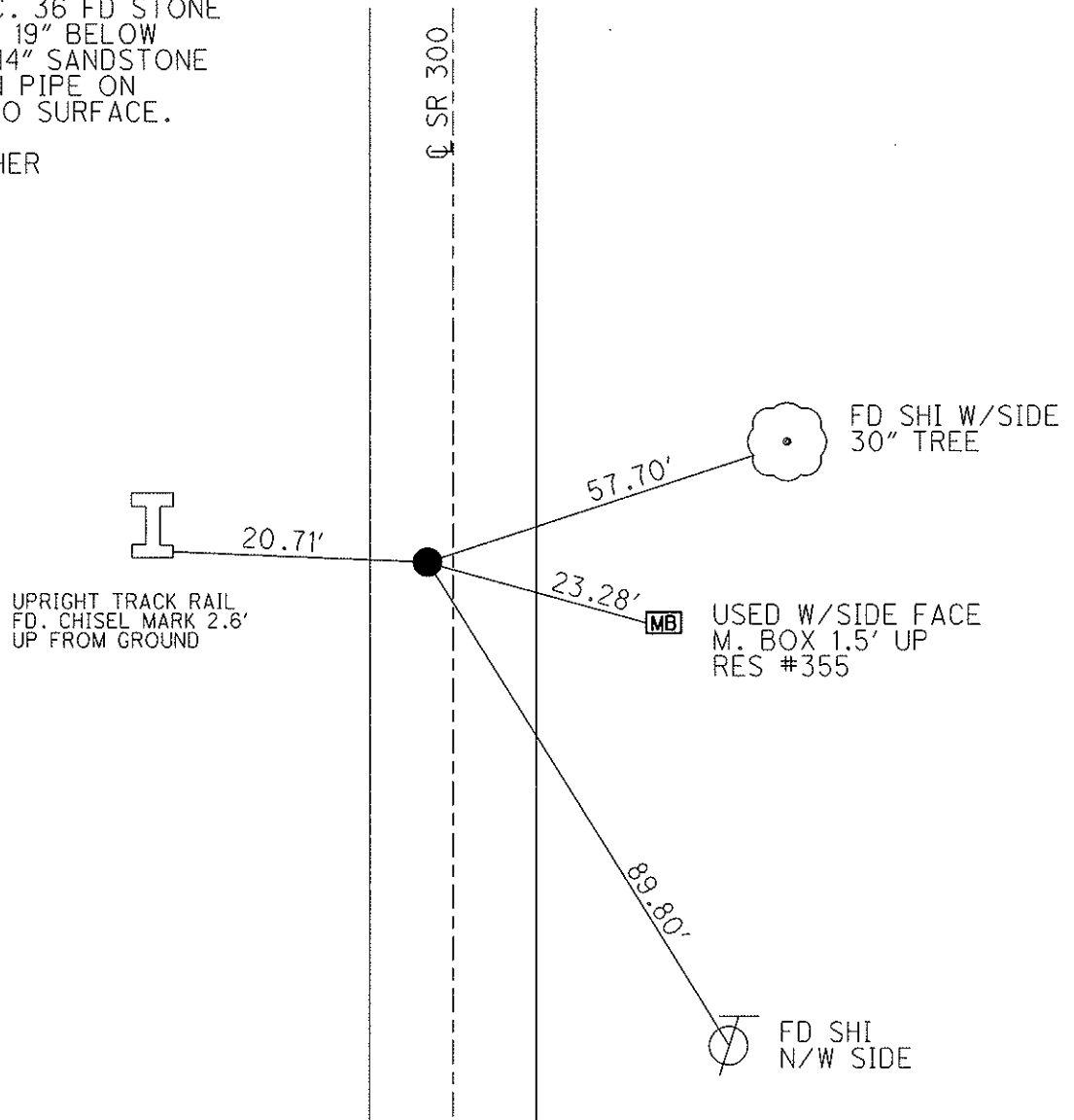
RECORD: 7/27/73  
 WEST-1 POST SEC. 36 FD STONE  
 WITH DRILL HOLE 19" BELOW  
 SURFACE. 10X10X14" SANDSTONE  
 SET 1" X 18" IRON PIPE ON  
 TOP OF STONE TO SURFACE.

RESET P.K./WASHER  
 9/16/94, MC

FD P.K./WASHER  
 5/10/00 KPM

GPS & TIED  
 1-7-11 JMH

SET MAG/WASHER  
 GPS, FINREF2  
 6/6/13, SDC



# O.D.O.T. DISTRICT 2 SURVEY OFFICE

PERSONNEL

REFERENCE NO. 2

SHEET 2 OF 15

NOTES LOEHRKE

H.C. CANTERBURY

R.C. HERMILLER

VOGEL

DATE 7/19/94

WEATHER FAIR

TEMP. + 85°

ROUTE S.R. #300

COUNTY SANDUSKY

TOWNSHIP MADISON

SECTION 36-35

T5 NR 13 E

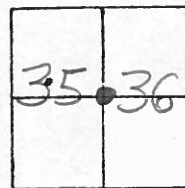
TYPE MONUMENT PK/WASHER

ON SURFACE - ~~BELOW~~ ON SURFACE

LEFT - ~~E~~ PAVT. - RIGHT 7.8' LT. E

2.3' TO LT EDGE PAVEMENT

S.L.M. 26+41



Record 7-27-73  
 WY. POST Sec. 36 Rd. Stone  
 with drill hole 19" below  
 surface.  
 10 x 10 x 14 Sandstone  
 set 1" x 18" iron pipe on  
 top of stone to surface.

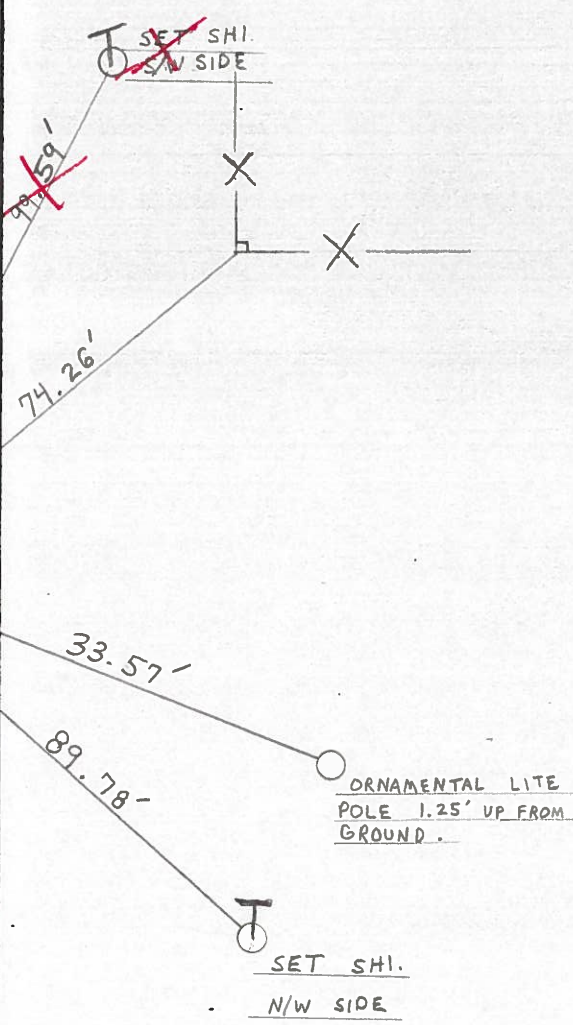
Re-set P.K. / washer  
 9-16-94 ms.

UPRIGHT TRACK RAIL  
 CHISEL MARK 2.6'  
 UP FROM GROUND.

20.74'

PAVT.

S.R. #300



Preventive Maintenance  
 Microsurfaced 2000  
 Existing Point Uncovered  
 Date 5-10-2000

Resurveyed 1994

LD-5-(25M-2-59)

SHEET NO. 2 of 8

PERSONNEL TITLE PERSONNEL TITLE

Cronin

COUNTY Sandusky

DATE Drawn 11/5/73

Ash

S. R. # 300

WEATHER

Ripple

SEC. U.S. #6 to U.S. #20

TEMP.

DESCRIPTION Ties for Control Points

JOB NO.

LEFT

CENTER LINE

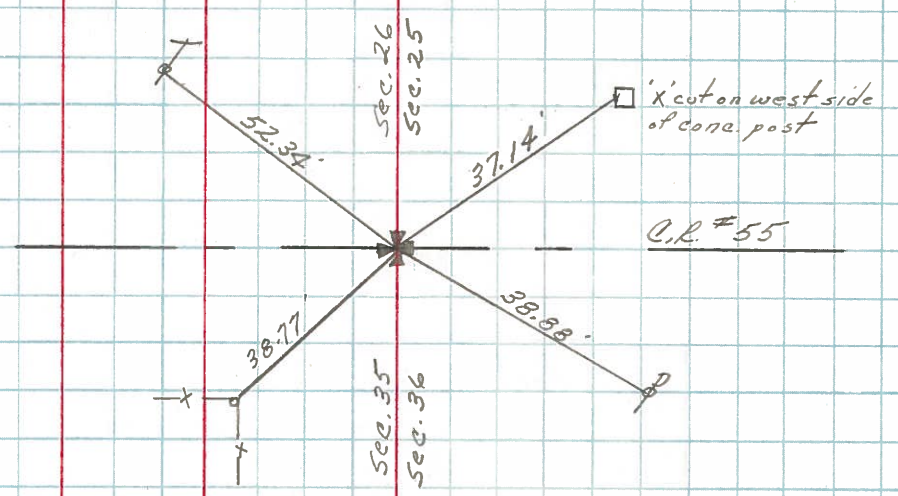
R/W

RIGHT

Madison Twp

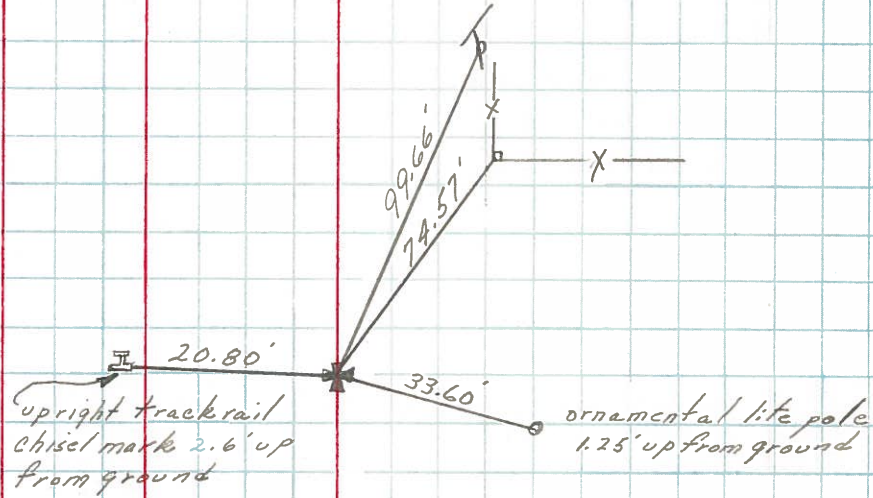
3

Section Corner  
Fd. small spike atop  
l.r. spike atop stone  
from County Ref.



2

W 1/4 Post Section 36  
Fd. stone with drill hole  
19" below surface  
10x10x14 sand stone  
7/27/73  
Set 1"x18" iron pipe atop  
& to the surface



Sec. 35  
Sec. 36