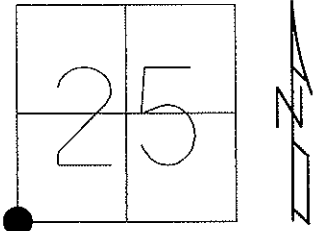


O.D.O.T. DISTRICT 2 SURVEY OFFICE (USE ONLY)

PERSONNEL \_\_\_\_\_ REFERENCE NO. 3 SHEET 4 OF 22  
 NOTES RHOADES DATE 4/16/13 ROUTE SR 300  
 H.C. CODER WEATHER RAIN COUNTY SANDUSKY  
 R.C. RHOADES TEMP. 51° TOWNSHIP MADISON  
 \_\_\_\_\_ SECTION 25  
 \_\_\_\_\_ T 5 N R 13 E

TYPE MONUMENT P.K./WASHER  
 ON SURFACE - ~~BELOW~~ ON  
~~LEFT~~ - Q PAV'T - ~~RIGHT~~ ON  
- TO - EDGE PAVEMENT  
 S.L.M. 52+93 1.0' SOUTH OF Q T.R.55  
 Grid: Northing: 616370.533 Easting: 1743143.846

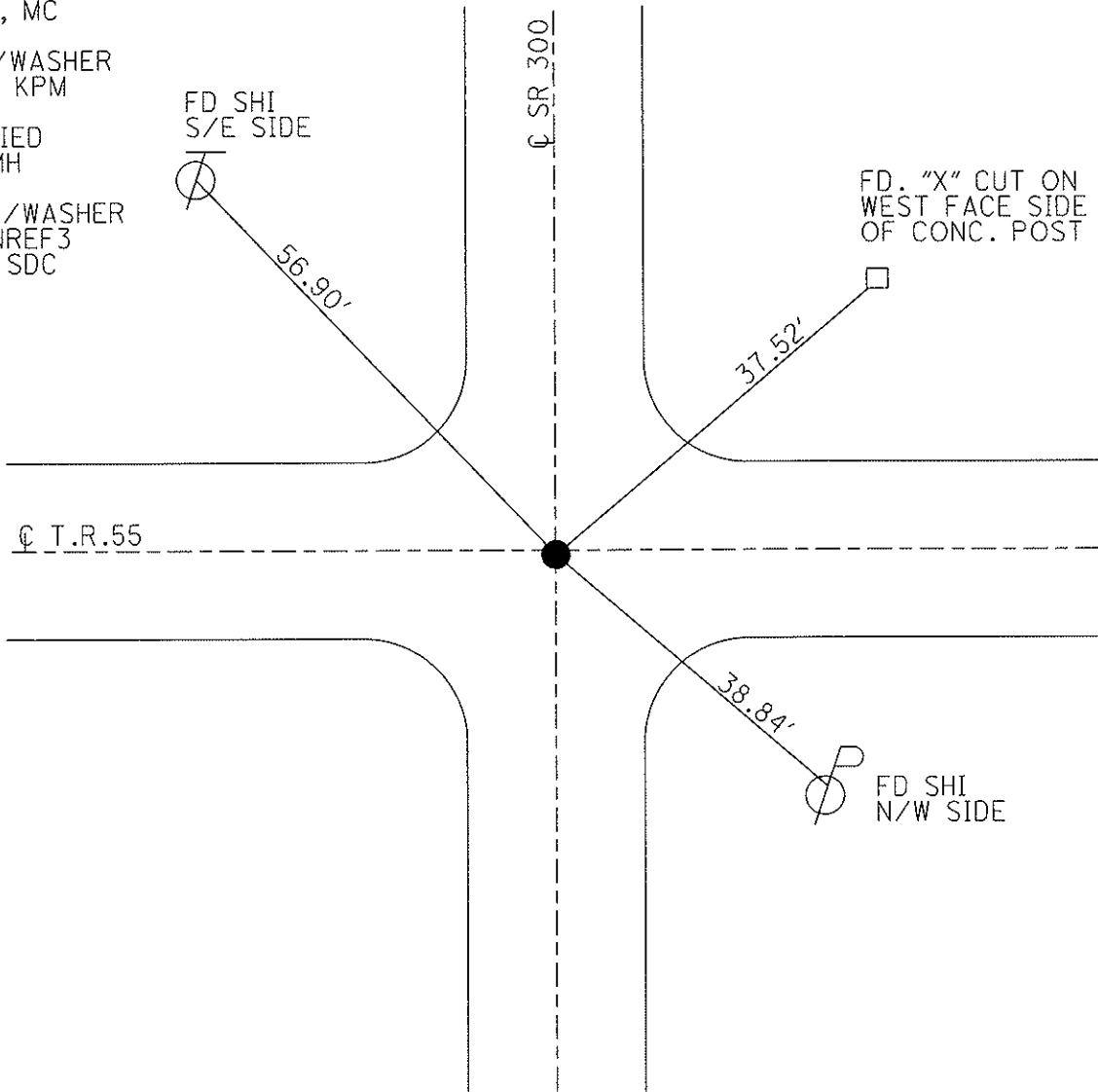


RESET P.K./WASHER  
 9/16/94, MC

FD P.K./WASHER  
 5/10/00 KPM

GPS & TIED  
 1-7-11 JMH

SET MAG/WASHER  
 GPS, FINREF3  
 6/3/13, SDC



# O.D.O.T. DISTRICT 2 SURVEY OFFICE

PERSONNEL

REFERENCE NO. 3

SHEET 3 OF 15

NOTES LOEHRKE

H.C. CANTERBURY

DATE 7/19/94

ROUTE S.R. # 300

R.C. HERMILLER

WEATHER FAIR

COUNTY SANDUSKY

VOGEL

TEMP. + 85°

TOWNSHIP MADISON

SECTION 35

T S N R 13 E

TYPE MONUMENT PK/WASHER

ON SURFACE - ~~BELOW~~ ON SURFACE

LEFT - ~~Q~~ PAV'T. - ~~RIGHT~~ ON Q

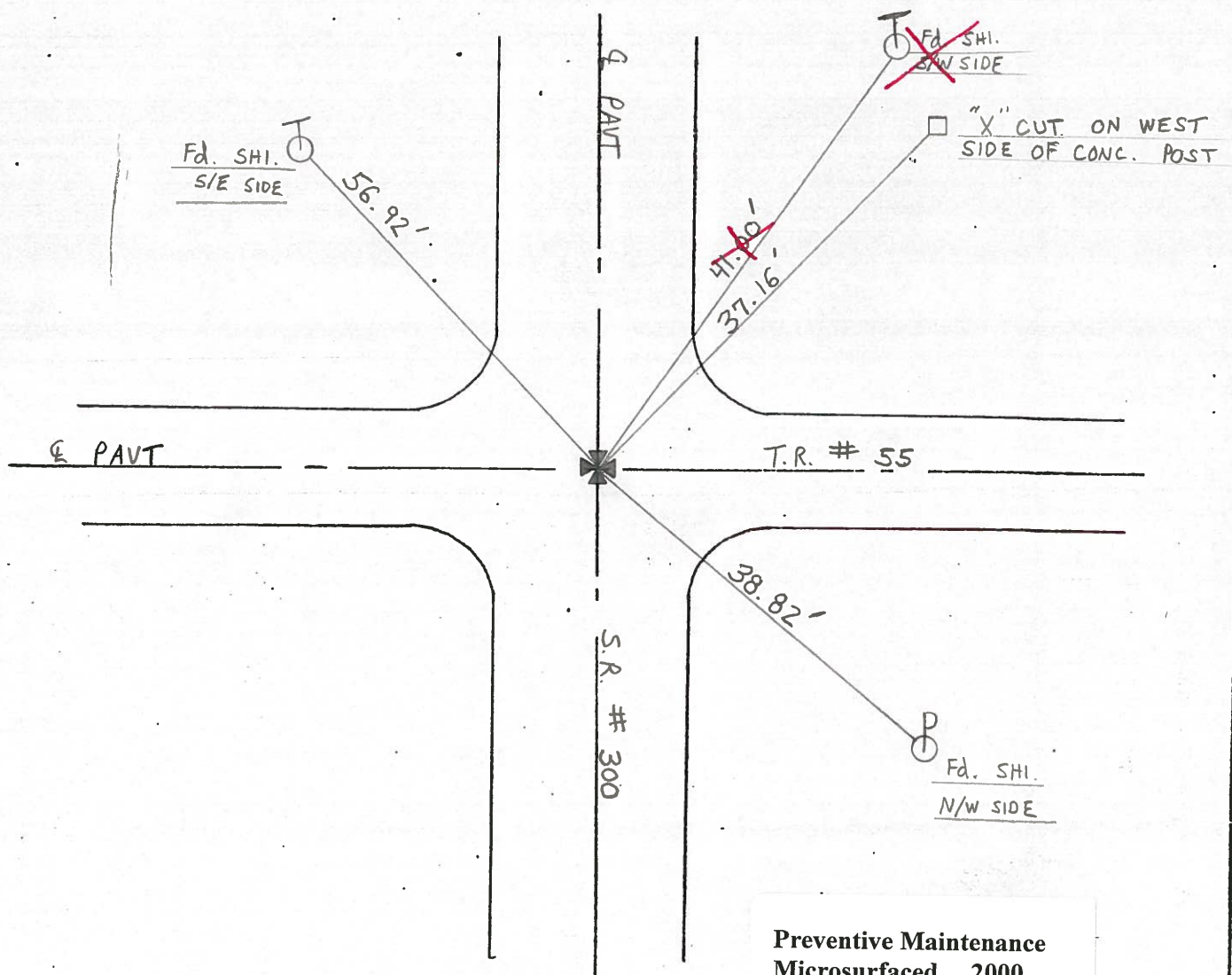
TO EDGE PAVEMENT 1.0' South of Q T.R. 55

S.L.M. 52 + 93

26	25
35	36



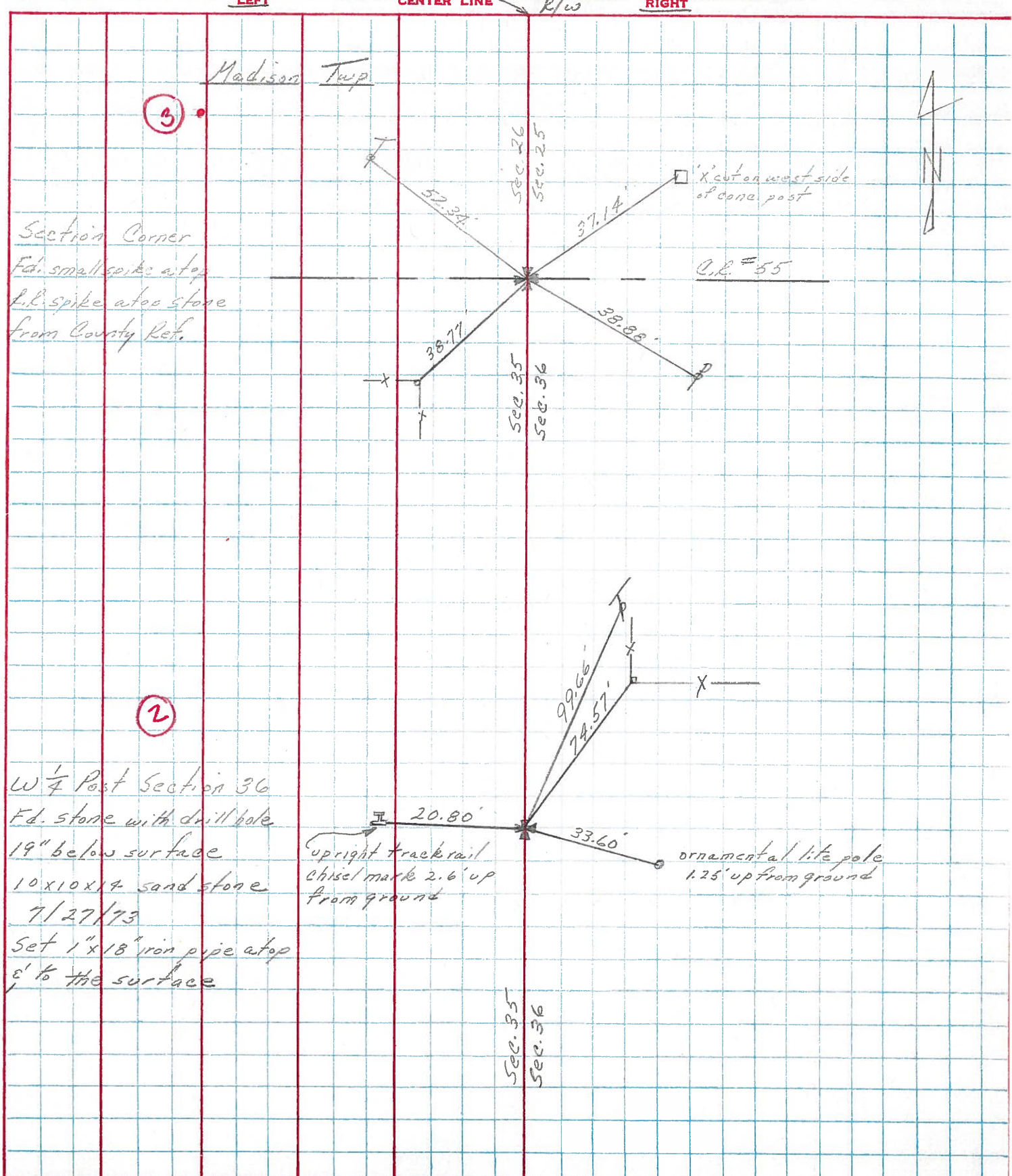
*Re-set PK/washer 9.16-94 m.c.*



Preventive Maintenance  
 Microsurfaced 2000  
 Existing Point Uncovered  
 Date 5-10-2000

PERSONNEL	TITLE	PERSONNEL	TITLE	COUNTY	DATE	WEATHER	TEMP.
Cronin				Sandusky	Drawn 11/5/73		
Ash				# 300			
Ripple				SEC. U.S. #6 to U.S. #20			

DESCRIPTION Ties for Control Points JOB NO. \_\_\_\_\_





PERSONNEL	TITLE	PERSONNEL	TITLE
<u>Schneider</u>		<u>Potts</u>	
<u>Mosser</u>			
<u>Barbour</u>			
<u>Redding</u>			

COUNTY Sandusky DATE 4-17-68  
 S. R. 300 WEATHER cloudy  
 SEC. 0.00 TEMP. 65°

DESCRIPTION Ties for Control Points JOB NO. \_\_\_\_\_

