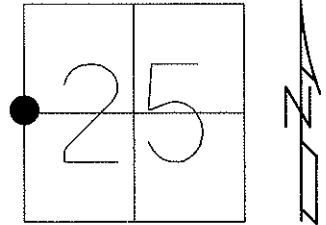


O.D.O.T. DISTRICT 2 SURVEY OFFICE (USE ONLY)

PERSONNEL _____ REFERENCE NO. 4 SHEET 5 OF 22
 NOTES RHOADES DATE 4/16/13 ROUTE SR 300
 H.C. CODER WEATHER RAIN COUNTY SANDUSKY
 R.C. RHOADES TEMP. 51° TOWNSHIP MADISON
 _____ SECTION 25
 _____ T 5 N R 13 E

TYPE MONUMENT P.K./WASHER
 ON SURFACE - ~~BELOW~~ ON
~~LEFT - C PAV'T~~ - RIGHT 3.1'
7.3' TO RT EDGE PAVEMENT
 S.L.M. 79+35



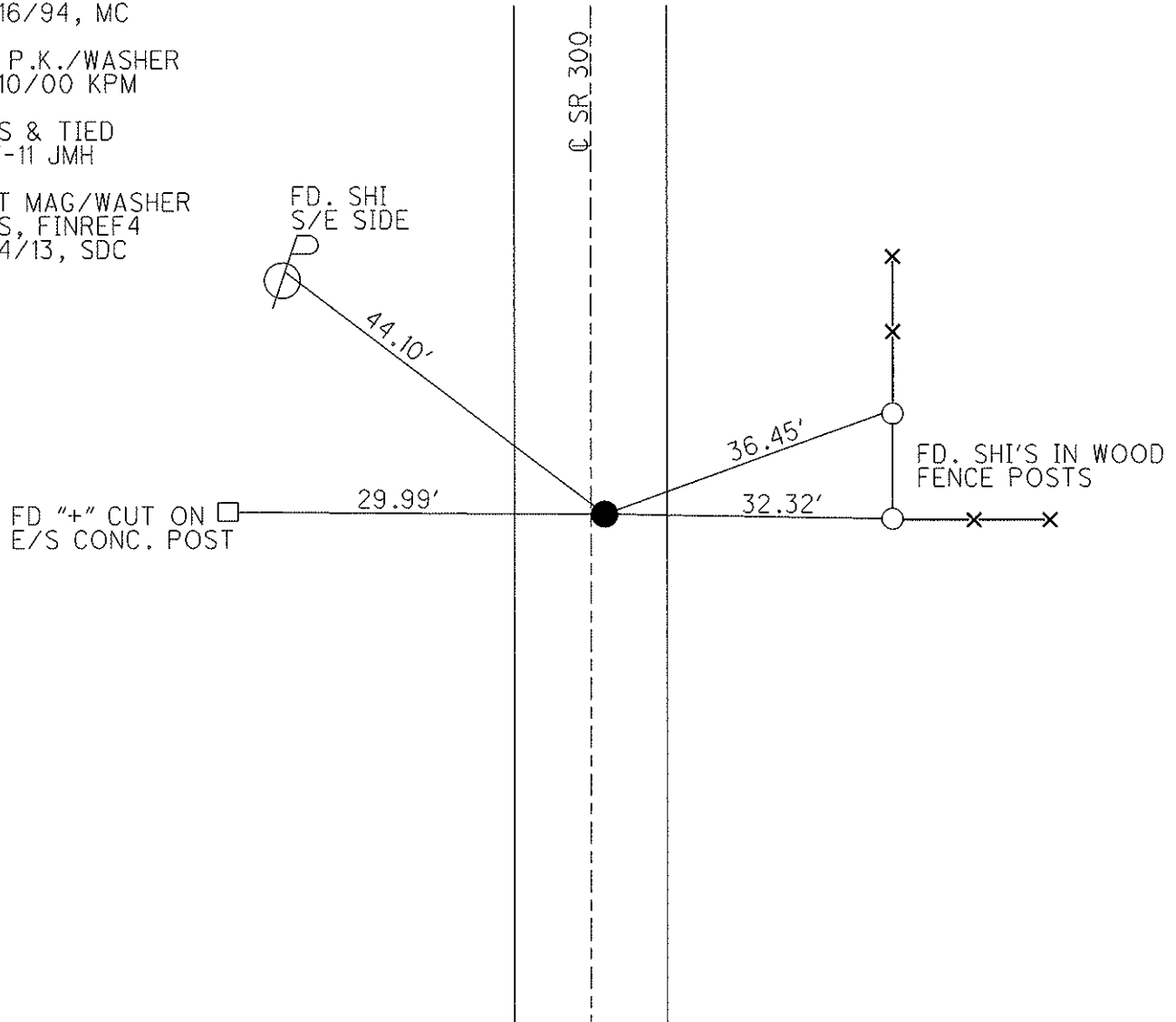
Grid: Northing: 619005.703 Easting: 1743196.328

RESET P.K./WASHER
 9/16/94, MC

FD P.K./WASHER
 5/10/00 KPM

GPS & TIED
 1-7-11 JMH

SET MAG/WASHER
 GPS, FINREF4
 6/4/13, SDC



O.D.O.T. DISTRICT 2 SURVEY OFFICE

PERSONNEL

REFERENCE NO. 4

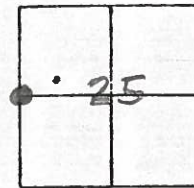
SHEET 4 OF 15

NOTES LOEHRKE
 H.C. CANTERBURY
 R.C. HERMILLER
VOGEL

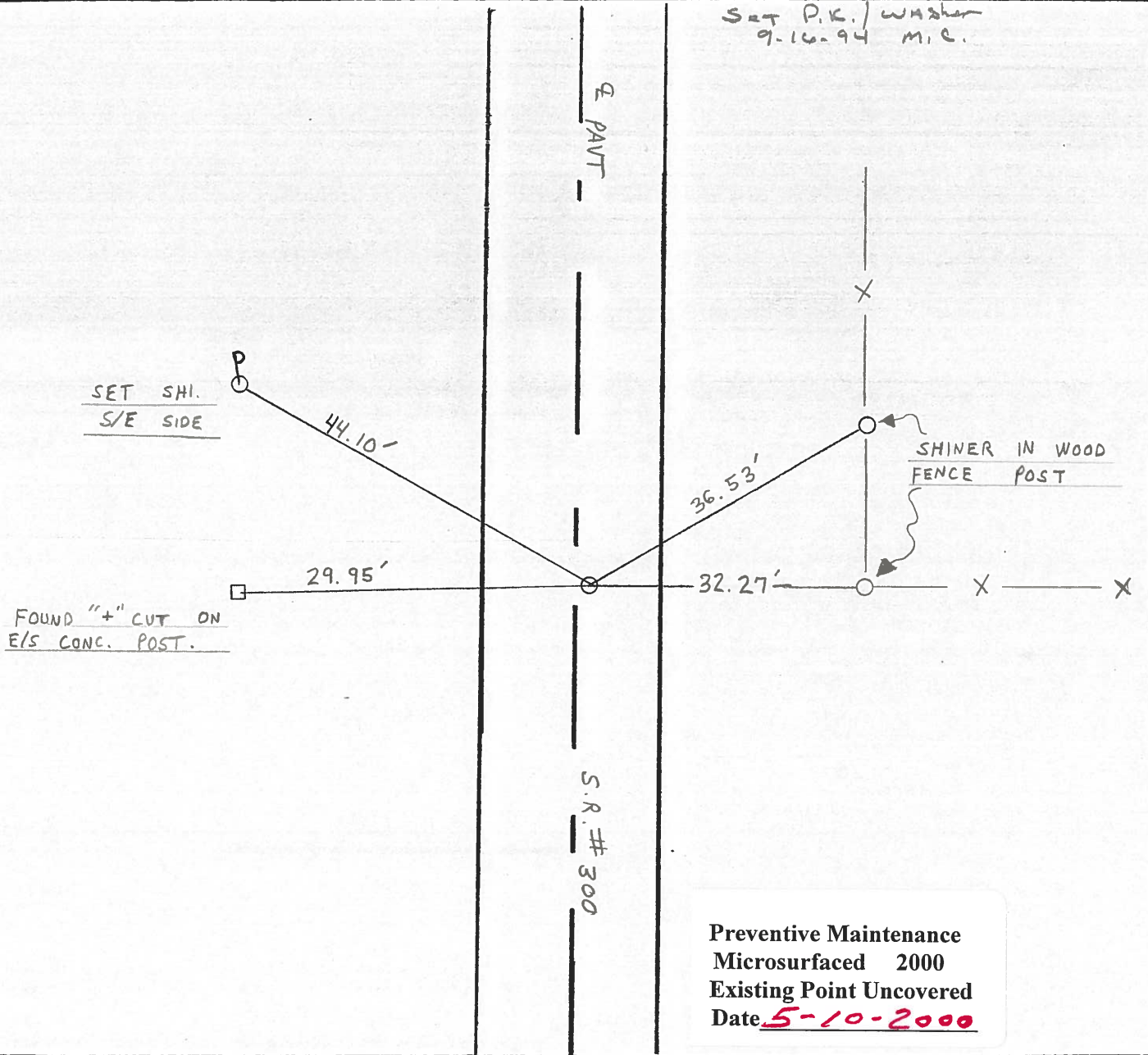
DATE 7-19-94
 WEATHER FAIR
 TEMP. +85°

ROUTE S.R. # 300
 COUNTY SANDUSKY
 TOWNSHIP MADISON
 SECTION 25 - 26
T 5 N R 13 E

TYPE MONUMENT PK / WASHER
 ON SURFACE - ~~BELOW~~ ON SURFACE
 LEFT - ℄ PAV'T. - RIGHT 3' RT. ℄
6.2' TO RT. EDGE PAVEMENT
 S.L.M. 79 + 35



Set P.K. / washer
 9-16-94 M.C.



ODOT. DISTRICT 2 SURVEY OFFICE

SHEET 1 OF

County Sandusky S.R. 300

Date 28 Feb. 85

Township Madison

Weather Cool

Section 25-26

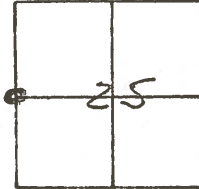
Temp. 36°

T N, R E

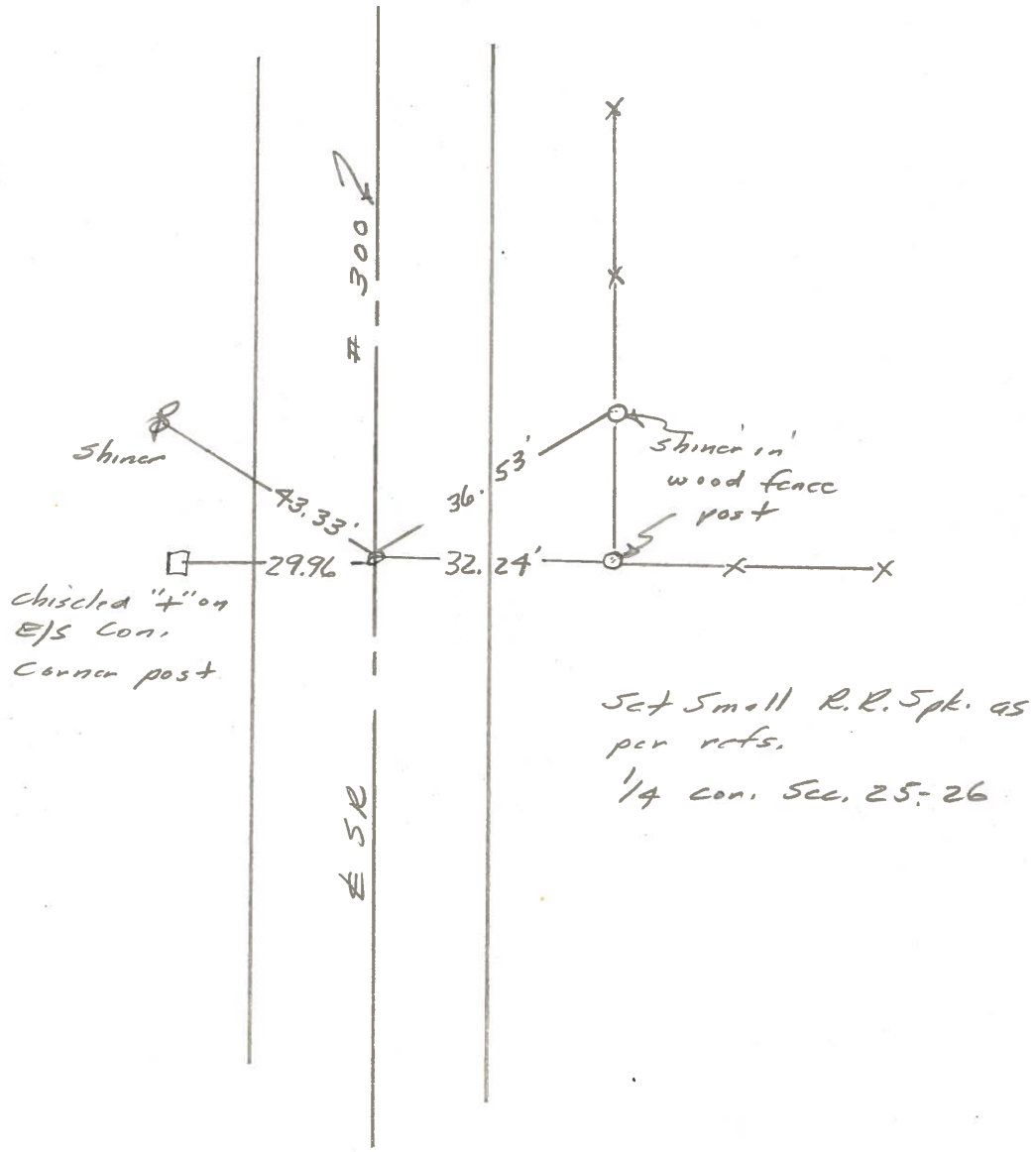
Personnel 1. Stone

J. Housholder

4



REF. NO. 4



PERSONNEL TITLE PERSONNEL TITLE

Cronin
Ash
Ripple

COUNTY Sandusky DATE Drawn 11/5/73

S. R. # 300 WEATHER

SEC. U.S. #6 to U.S. #20 TEMP.

DESCRIPTION Ties for Control Points JOB NO.

